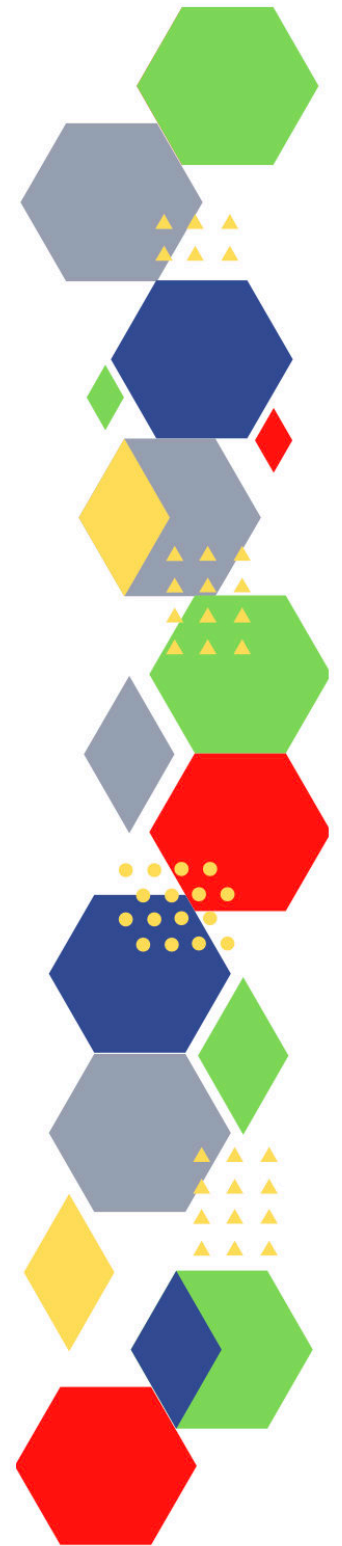




Future Proof Health Presents

Weekly News

23rd February 2023



Communication	
Communication with Patients	
Communication within Teams	
Consent / Advocacy / IMCA	
People and Personal Development	
Personal / People Development / Leadership	<ul style="list-style-type: none"> • Accountability and delegation in practice • Climbing the leadership ladder: Why female nurses can struggle to reach the top • Leadership development programme • NHS England » Supporting clinical leadership in virtual wards – A guide for integrated care system clinical leaders • Learning from our equals (independentnurse.co.uk) • Nurses need to change how they think about health literacy, says nurse researcher (cogora.com) • Aspirant Deputy Directors of Nursing Talent Management Programme • Turning conflict into collaboration
NHS Employers / HR / NHS Pension	<ul style="list-style-type: none"> • NHS Employers • Pensions Online • Growing Occupational Health and Wellbeing (OHWB) Together (outlook.com)
Health, Safety & Security	
	<ul style="list-style-type: none"> • NPSA • Control of Substances Hazardous to Health (COSHH) • Weekly Digest Newsletter: 14 February 2023 (govdelivery.com)
Gov UK - NHS	
CQC	<ul style="list-style-type: none"> • GP mythbusters • YouTube - Care Quality Commission
MIMS	<ul style="list-style-type: none"> • Prescribing Update
Drug / Device Alerts (MHRA)	<ul style="list-style-type: none"> • Drug Safety Update (mhradrugsafety.org.uk) • Genetic testing can help prevent ADRs, study shows (mims.co.uk)
Antibiotic steward-ship / Anti-microbial resistance	

Vaccines / Medications / Prescribing	<ul style="list-style-type: none"> • Protocol for ordering, storing and handling vaccines • A Competency Framework for all Prescribers • Non-medical prescribing • The Human Medicines Regulations 2012 • RCN - Non-medical prescribers • Royal Pharmaceutical Society • Standards for prescribing • Clinical Negligence Scheme for General Practice • Home - electronic medicines compendium (emc) • Drug shortages - live tracker MIMS online • NHS England » Pharmacy Manual
Health Protection Review	
Emergency Situations	<ul style="list-style-type: none"> • Resuscitation Council UK
Infection Control / Infection Statics	<ul style="list-style-type: none"> • NHS England » National infection prevention and control
Safe Guarding	<ul style="list-style-type: none"> • Female genital mutilation (FGM) • PREVENT • Child protection system in the UK • Safeguarding Adults • Safeguarding children: detailed information • Domestic abuse victim services, England and Wales: 2022 (www.gov.uk) • Dudley Financial Abuse Alliance - September 2022 (govdelivery.com) • Wolverhampton Safeguarding Together
Practice Policies: Practice Management / Accountability Duty of Candour	
Audit	
Information Governance / Record Keeping	<ul style="list-style-type: none"> • Guide to Data Protection • Supporting general practice – Medical record keeping
Roles in General Practice Including AHP	<ul style="list-style-type: none"> • Standards for nursing associates • GP mythbuster 57: Health Care Assistants in General Practice • NHS England » Allied Health Professions

Quality & Service Improvement	
Quality, Service & Improvement	<ul style="list-style-type: none"> • The PRSB • General Practice Assessment Questionnaire (GPAQ) • Healthwatch • NHS Five Year Forward View • General Practice Forward View • NMC • Dr Jon Griffiths Blog • NHS Confed • Health Quality Improvement Partnership
Revalidation	
Personal Practice & Development	
Practice Management	<ul style="list-style-type: none"> • Institute of General Practice Management • Practice Index • national infection prevention and control manual (NIPCM) for England (outlook.com)
EMIS / System One / IT	
Recruitment Employment / Retirement / Legacy Nursing	
NHS Staff Self Care & Resilience	<ul style="list-style-type: none"> • Samaritans • Mental Health at work • Calm • Supporting our NHS people • The Hub :: Black Country Healthcare NHS Foundation Trust • Exploring mental health at work • Supporting nurses with long COVID (independentnurse.co.uk) • Growing Occupational Health and Wellbeing (OHWB) Together (outlook.com) • e-Learning for healthcare portal (outlook.com) • Looking after you: Confidential coaching and support for primary care nurses
Supporting International Recruitment in the NHS	<ul style="list-style-type: none"> • NHS Pastoral Care Quality Award (outlook.com) • Code of Practice (outlook.com) • 'Becoming a mental health nurse in the UK' (outlook.com)

Practice Transformation / Innovation Agency	<ul style="list-style-type: none"> • NHS Providers • New testing centres to deliver millions of checks and scans (independentnurse.co.uk) • Expansion of community diagnostic centres announced (cogora.com)
Future of NHS / General Practice / NHS Recovery	<ul style="list-style-type: none"> • NHS England • NHS England » Primary care • NHS mandate 2022 to 2023 • Changes to NHS budget • Register with a GP Surgery • Press release CIPFA publishes interesting care report • One year on from the backlog recovery plan: what next for NHS waiting lists? (kingsfundmail.org.uk) • NHS England » 2023/24 priorities and operational planning guidance • new blueprint to help recover urgent and emergency care services (outlook.com) • Up to £250 million to speed up hospital discharge - GOV.UK (outlook.com) • guidance for reducing DNAs in outpatient services (outlook.com) • supporting information: virtual ward including hospital at home (outlook.com) • acute respiratory infection virtual wards (outlook.com) • guide to setting up technology-enabled virtual wards (outlook.com) • next virtual wards clinical summit (outlook.com) • Delayed hospital discharges and adult social care (parliament.uk) • The A&E crisis: what's really driving poor performance? • The state of community health services in England The Nuffield Trust • One-stop shops for testing deliver over 3 million potentially lifesaving checks, tests and scans - GOV.UK (www.gov.uk) • Latest NHS reforms will not succeed until Government fixes longstanding problems - Committees - UK Parliament • Register with a GP surgery service roadmap 2023/24 - NHS Digital • The state of community health services in England The Nuffield Trust
NHS Resolution	
ICS / ICB / ICP / PCN Commissioning	<ul style="list-style-type: none"> • NHS England » Integrated care • Early bird rates still available Integrated care summit (kingsfundmail.org.uk) • Read the report (kingsfundmail.org.uk)Introducing integrated care systems (kingsfundmail.org.uk) • NHS England » ICB annual reports and working with people and communities: Guidance
QOF / PHOF / DES / LES / NHS Contract / CQRS / CQUIN	<ul style="list-style-type: none"> • NHS England » Network Contract Directed Enhanced Service: guidance for 2022/23 in England
Leadership / Innovation	

Greener NHS	<ul style="list-style-type: none"> • Greener Allied Health Professional hub (england.nhs.uk)
Personalised Care	
Personalised Care / Self Care / Social Prescribing / Health Coaching	<ul style="list-style-type: none"> • Self Care forum • Personalised Care Institute • Personalised care • Social Prescribing Academy • Patient education / self management programmes for people with long term conditions 2021/22 (outlook.com)
Group consultation	
Working Differently	
Shared Decision Making	<ul style="list-style-type: none"> • Personalised Care Institute
Equality & Diversity	
Equality & Diversity	<ul style="list-style-type: none"> • Public Health Profiles
Inclusion Health	<ul style="list-style-type: none"> • Health Creation Academic Network • Inequality on the inside
Poverty / Homelessness	<ul style="list-style-type: none"> • Crisis • This is Poverty • Watch the film here (outlook.com) New short film aims to support NHS staff caring for people facing homelessness • a discussion guide available (outlook.com) • Homelessness management information – Ukrainian nationals: England (outlook.com) • Hidden homelessness in the UK: evidence review (outlook.com)
Population Health / Health Communities	<ul style="list-style-type: none"> • Disability by age, sex and deprivation, England and Wales: Census 2021 (kingsfundmail.org.uk) • Wider Determinants of Health: February 2023 update (outlook.com)
Thrive Into Work	<ul style="list-style-type: none"> • Thrive into Work • Thrive into Work Referral form
Migrant / Refugee Health	<ul style="list-style-type: none"> • THE REFUGEE & MIGRANT CENTRE • Preconception health among migrant women in England - GOV.UK (outlook.com)

Health Inequalities	<ul style="list-style-type: none"> • NHS News • Health inequalities – from evidence to action • NHS England » Equality, diversity and health inequalities • Access to care: reducing health inequalities for people living with sickle cell disorder • Excess mortality in England and English regions, Office for Health Improvement and Disparities, 9 February 2023 (kingsfundmail.org.uk) • HEE e-learning for health platform (outlook.com) Core20PLUS5 e-learning modules
Trans / Non-binary Health / LGBTQ+	<ul style="list-style-type: none"> • LGBT Foundation • Surgery staff grab sheet (squarespace.com) • Trans inclusive organisations — TransActual • TransActual - Healthcare • CliniQ • Exploring health care professionals' experiences of supporting LGBTQ+ patients: a qualitative study (practicenursing.com)
Traveller / Gypsy / Romany Health	<ul style="list-style-type: none"> • Gypsy Roma and Traveller History and Culture The Traveller Movement • Friends, Families and Travellers (gypsy-traveller.org)
Veterans Health	<ul style="list-style-type: none"> • The first call for help takes courage
Voluntary / Charity	<ul style="list-style-type: none"> • Working with the Voluntary, Community and Social Enterprise Sector National Voices • Welcome to Community Health Services (crowdicity.com)
Management of Emergency Situations	
Management of Emergency Situations	
111 / Emergency Care	
First Contact	<ul style="list-style-type: none"> • Supporting general practice – Common pitfalls • Paediatrics for Primary Care (and anyone else) (gppaedstips.blogspot.com)
Red Flags	
Sepsis	<ul style="list-style-type: none"> • Sepsis: recognition, diagnosis and early management • Sepsis guidance implementation advice for adults • Sepsis in Children • Sepsis Trust • quick SEPSIS RELATED ORGAN FAILURE ASSESSMENT
Therapeutic Monitoring	

OSCE	<ul style="list-style-type: none"> • Geeky Medics • Abdominal Examination - Demonstration - YouTube • Cardiovascular Examination - Demonstration - YouTube • Respiratory Examination - Demonstration - YouTube • Physical Diagnosis Skills - University of Washington School of Medicine
Role Specific	
Cervical Cytology	<ul style="list-style-type: none"> • Guide to the interim assessment • British Association for Cytopathology • Lab Tests Online
Ear Care	<ul style="list-style-type: none"> • Ear Care Centre • RNID
Wound Management / Compression	<ul style="list-style-type: none"> • Microworld • Tissue Viability Society • The BLS • JWC Masterclass • Journal of Nursing - Newsletter
Minor Surgery	
Obtaining Samples / Results	<ul style="list-style-type: none"> • Lab Tests Online
Health Promotion / Health Screening	
Health Promotion / Population Health	<ul style="list-style-type: none"> • Better Health • SHAPE Strategic Health Asset Planning and Evaluation (shapeatlas.net) • Wider Determinants of Health: February 2023 update (outlook.com) • Both, and: population health and public health professionals need to make the most of distinct contributions to better health The King's Fund (kingsfund.org.uk)
Health Screening	<ul style="list-style-type: none"> • PHE Screening • Abdominal aortic aneurysm screening: standards report 2021 to 2022 (outlook.com)
PHE / OHID / UKHSA	<ul style="list-style-type: none"> • Knowledge & Library Services • Campaign Resources • Public Health Profiles • Health Publications • Health Profile for England 2021 • English indices of deprivation 2019 • Public Health Outcomes Framework: February 2023 data update - GOV.UK (outlook.com) • Health profiles for English regions: 2021 (outlook.com) • Climate and health security: Looking ahead to 2023 • Making progress on the global mission to develop pandemic-fighting tools within 100 days

NHS Health Check	<ul style="list-style-type: none"> • NHS Health Check
UK GOV Flu / Covid / Bird Flu	<ul style="list-style-type: none"> • Coronavirus (COVID-19) Infection Survey, UK: 10 February 2023 - GOV.UK (outlook.com) • Coronavirus (COVID-19) Infection Survey, Northern Ireland weekly report 10 February 2023 (outlook.com) • Bird flu (avian influenza): cases in wild birds (outlook.com) • Bird flu (avian influenza): findings in non-avian wildlife (outlook.com) • National flu and COVID-19 surveillance reports: 2022 to 2023 season (outlook.com) • Coronavirus (COVID-19) Infection Survey technical article: Cumulative incidence of the number of people who have been infected with COVID-19 by calendar period (variant) and age, in England, 09 February 2023 (outlook.com) • Coronavirus (COVID-19) Infection Survey, UK: 10 February 2023 (outlook.com) • Investigation of SARS-CoV-2 variants: technical briefings (outlook.com) • NHS COVID-19 app statistics (outlook.com) • COVID-19 testing for people arriving from China - UK Health Security Agency (blog.gov.uk) (outlook.com)
UK GOV - General Practice / Primary Care	<ul style="list-style-type: none"> • GP out-of-hours syndromic surveillance: weekly bulletins for 2023 (outlook.com) • GP in-hours: weekly bulletins for 2023 (outlook.com)
UK GOV - Secondary Care	<ul style="list-style-type: none"> • Provisional Monthly Hospital Episode Statistics for Admitted Patient Care, Outpatient and Accident and Emergency data, April 2022 – December 2022 (outlook.com) • Summary Hospital-level Mortality Indicator (SHMI), Deaths associated with hospitalisation, England, October 2021 – September 2022 (outlook.com)
UK GOV Deaths / Suicide / Palliative Care / Mortality / End of Life	<ul style="list-style-type: none"> • Deaths registered weekly in England and Wales, provisional: week ending 27 January 2023 - GOV.UK (outlook.com) • Weekly all-cause mortality surveillance: 2022 to 2023 (outlook.com)
UK GOV - LTC - including cancer	<ul style="list-style-type: none"> • Patient education / self management programmes for people with long term conditions 2021/22 (outlook.com) • Obesity Profile: update of adult and child obesity slide packs February 2023 (outlook.com)
Surveillance / Syndromic Surveillance	<ul style="list-style-type: none"> • Syndromic surveillance: weekly summaries for 2023 - GOV.UK (outlook.com)
Ambulance / Remote Health / 111 / Urgent Care / A&E	<ul style="list-style-type: none"> • Emergency department: weekly bulletins for 2023 (outlook.com) • Provisional Accident and Emergency Quality Indicators for England, December 2022, by provider (outlook.com) • National ambulance syndromic surveillance: weekly bulletins 2023 - GOV.UK (outlook.com) • Remote health advice: weekly bulletins for 2023 (outlook.com) • Provisional Accident and Emergency Quality Indicators for England, December 2022, by provider (outlook.com)

UK GOV Infectious Disease Monitoring / NOIDS	<ul style="list-style-type: none"> • Hepatitis B in England (outlook.com) • Weekly Statutory Notification of Infectious Diseases (NOIDs) Report (outlook.com) • Notifiable diseases: causative agents reports for 2023 - GOV.UK (outlook.com) • Notifiable diseases: weekly reports for 2023 - GOV.UK (outlook.com) • Notifiable diseases: last 52 weeks (outlook.com) • National norovirus and rotavirus surveillance reports: 2022 to 2023 season - GOV.UK (outlook.com)
UK GOV - Mental Health / Learning Difficulties	<ul style="list-style-type: none"> • Out of Area Placements in Mental Health Services, November 2022 (outlook.com) • Disability by age, sex and deprivation: England and Wales: Census 2021 (outlook.com)
Addiction/Smoking	<ul style="list-style-type: none"> • Drink Coach • Stop smoking interventions and services • Talk to Frank • Funding boost to drug and alcohol services across England (independentnurse.co.uk)
Immunisation / Travel Health	
<ul style="list-style-type: none"> • Joint Committee on Vaccination and Immunisation • Immunisation against infectious disease • West Midlands Immunisation Service • Vaccination of individuals with uncertain or incomplete immunisation status • Immunisation Queries: Immunisation information for Health Care Services within the West Midlands area • Immunisation 	
Flu	<ul style="list-style-type: none"> • Flu and flu vaccinations • The national influenza immunisation programme 2021 to 2022 • Flu vaccines for the 2021 to 2022 season poster • Appendix C: Flu vaccinator competency assessment tool • Healthcare assistants and flu vaccinations
Covid Vaccine	<ul style="list-style-type: none"> • Greenbook COVID-19 chapter 14a • COVID-19 Vaccine Moderna e-learning now available • GP COVID-19 vaccine dashboard • Updates made to the COVID-19 vaccination learning programme
Children	<ul style="list-style-type: none"> • Child Health Information Services Local Government Association
Adults	<ul style="list-style-type: none"> • Immunisation patient group direction (PGD) templates • Shingles immunisation programme: introduction of Shingrix® letter

Vaccine Update	<ul style="list-style-type: none"> • Vaccine update: issue 332, October 2022, flu special edition - GOV.UK (www.gov.uk) • Vaccine update: issue 333, December 2022 - GOV.UK (www.gov.uk) • Vaccine update: issue 334, January 2023 (outlook.com)
PGD	
Travel Health	<ul style="list-style-type: none"> • Travel Health Pro • Fit for Travel • Travel Health • Jane Chiodini • Corona.Help
Mental Health / Learning Disability / Disability	
Mental Health	<ul style="list-style-type: none"> • Mental Health • Mental Health UK • Mind • Place2b • Rethink Mental Illness • Young Minds • Every Mind Matters • Calm • Headspace • Better Health - Every Mind Matters - Resources • ZSA Training • NHS > Mental Health • Progress in improving mental health services in England (kingsfundmail.org.uk) • Mental health and wellbeing JSNA profile: February 2023 update - GOV.UK (kingsfundmail.org.uk) • Millions wait for mental health support as growth in nursing workforce slows (cogora.com) • Mental health and wellbeing JSNA profile: February 2023 update (outlook.com) • Mental Health Services Monthly Statistics, Performance November, Provisional December 2022 (outlook.com) • Progress in improving mental health services in England - National Audit Office (NAO) press release • Mental health services still under huge strain, despite improvements (independentnurse.co.uk) • Non-clinical staff working with children receive mental health training in £400,000 pilot scheme (cogora.com)
Learning Disability	<ul style="list-style-type: none"> • Learning Disabilities • Learning Disability England • Mencap • Bild • Autism

Disability (Inc. hearing and visual)	<ul style="list-style-type: none"> • Disability Rights UK • Disability Matters • RNID - National hearing loss charity • Spokzpeople • Sight Loss Data Tool RNIB • Making GP practices deaf-friendly Healthwatch
From Cradle to...	
Infant Health	<ul style="list-style-type: none"> • Tommys • First Steps Nutrition Trust • Bliss • ICON Toolkit • Sandwell - BC - ICB Primary Care - 7 minute briefing • The best start for life: a progress report on delivering the vision - GOV.UK (www.gov.uk) • Breastfeeding at 6 to 8 weeks after birth: quarterly data for 2022 to 2023 - GOV.UK (outlook.com) • NICE recommends genetic test to prevent newborn babies going deaf News News NICE
Child Health	<ul style="list-style-type: none"> • Unicef • Health Professional Academy • Premature Babies • Child and Maternal Health • Women and Child First • Child Health Information Services • Place2b • Childhood eczema • Childhood asthma • Paediatrics for Primary Care (and anyone else) (gppaedstips.blogspot.com) • Barnardos • Childrens Society • Action for Children • Infant Allergy Conference • Managing Eczema • Children living with parents in emotional distress: March 2022 update (outlook.com) • Non-clinical staff working with children receive mental health training in £400,000 pilot scheme (cogora.com) • Child development outcomes at 2 to 2 and a half years: quarterly data for 2022 to 2023 (outlook.com) • Health visitor service delivery metrics experimental statistics: quarterly data for 2022 to 2023 - GOV.UK (outlook.com) • State of the nation 2022: children and young people's wellbeing (outlook.com) • Digital mental health tech for children and young people recommended by NICE in first rapid healthtech guidance News News NICE • The best start for life: a progress report on delivering the vision (kingsfundmail.org.uk) • Time to see, and hear, our lost children (independentnurse.co.uk) • Non-clinical staff working with children receive mental health training in £400,000 pilot scheme (cogora.com)
Adolescent Health	<ul style="list-style-type: none"> • Adolescent Health Programme • Society for Adolescent Health and Medicine • Young Minds • Commitment to care leavers is a significant step Health Education England (hee.nhs.uk)

<p>Mens Health</p>	<ul style="list-style-type: none"> • Mens Health Forum • Mens Health Month • Mens health.org • Mens Health UK • Men and mental health • Men's Mental Health Awareness • Prostate Cancer UK • Orchid Fighting Male Cancer • Prostate Cancer UK Facebook Page • Movember • Over half of men experience some symptoms of urinary incontinence, study finds (cogora.com) • Fathers can suffer from postnatal depression too – how can we help them access perinatal mental health services? (cogora.com) • Men with urinary incontinence anxious due to lack of facilities (independentnurse.co.uk) • What should my testicles look and feel like? - NHS (www.nhs.uk) • How to check for testicular cancer
<p>Women's Health</p>	<ul style="list-style-type: none"> • Womens Health Concern • Well Being of Women • Coppa Feel • Menopause Matters • The Menopause Charity • Royal College of Obstetricians and Gynaecologists - Guidelines • Pelvic Partnership • CRUK - Womens Cancer • Breast Cancer Now • Foundation for Women's Cancer • Eve Appeal • Ovarian.Org • Jo's Trust • Well Spring • Know your Lemons • British Menopause Society - www.thebms.org.uk • NHS - www.nhs.uk/conditions/menopause • Henpicked - henpicked.net • The Menopause Exchange - www.menopause-exchange.co.uk • Women's Health Concerns - www.womens-health-concern.org • Menopause Matters - www.menopausematters.co.uk • The Daisy Network - www.daisynetwork.org • Dr Louise Newson's Menopause Doctor - www.menopausedoctor.co.uk • Manage My Menopause - www.managemymenopause.co.uk/menopause-advice • Menopause Support - menopausesupport.co.uk • Bourne2Care

<p><i>Women's health continued</i></p>	<ul style="list-style-type: none"> • How to manage genitourinary symptoms of menopause (cogora.com) • Vaginal atrophy: what is it and how can it be treated? (practicenursing.com) • Overview Menopause: diagnosis and management Guidance NICE • Gpnotebook focus on women's health (contains promotional information) (mailchi.mp) • Women's Health Strategy (www.gov.uk) • self-care factsheet (selfcareforum.org) • HRT supply issues continue (mims.co.uk)
<p>The Older Population</p>	<ul style="list-style-type: none"> • BGS • Ageing Better • Delirium Champions - YouTube
<p>Carers / Social Care / Care Homes</p>	<ul style="list-style-type: none"> • The Care Provider Alliance • Skills for Care • The Care Workers' Charity • Supporting Adult Carers • The Care UK • UK Care Week • Join Us At The Alzheimer's Dementia & Care Show (ourmailsender4.com) • Group accounting manual 2023 to 2024: consultation exercise (kingsfundmail.org.uk) • Social care charging for local authorities: 2023 to 2024 (kingsfundmail.org.uk) • Gpnotebook focus on women's health (contains promotional information) (mailchi.mp)
<p>Young Carers</p>	
<p>Family Planning & Sexual Health</p>	
<p>Family Planning</p>	<ul style="list-style-type: none"> • Faculty of Sexual and Reproductive Healthcare Education and Training • Contraception after the age of 40: A guide for nurses (independentnurse.co.uk)
<p>Reproductive</p>	<ul style="list-style-type: none"> • Tommys • Reproductive health: 2022 update - GOV.UK (outlook.com)
<p>Sexual Health / Sexual Abuse</p>	<ul style="list-style-type: none"> • Sexual and Reproductive Health Profiles • FSRH Education & Training • Sexual health
<p>Maternity / Neonate health</p>	<ul style="list-style-type: none"> • Fathers can suffer from postnatal depression too – how can we help them access perinatal mental health services? (cogora.com)

Care of Patients with Long Term Conditions

LTC	<ul style="list-style-type: none"> • Physical Activity for the Prevention and Management of Long-Term Conditions • Health A to Z
Diabetes & Pre-Diabetes	<ul style="list-style-type: none"> • Mumoactive • The mySugr App • PCDS Entry level module series - Foot Check • Type 2 diabetes in adults: management • Diabetes on the Net Online diabetes journals, education and resources for healthcare professionals. • Focus on: Ramadan GPnotebook Resources • Delegation of Insulin Administration Diabetes UK • Continuous glucose monitoring for type 1 diabetes (practicenursing.com) • Type 2 diabetes and remission through diet (practicenursing.com) • GPnotebook focus on diabetes (contains promotional information from AstraZeneca: When eGFR is dipping, the clock is ticking...) (mailchi.mp) • Let's Tackle Diabetes Now : the iDEAL Way
Respiratory	<ul style="list-style-type: none"> • Spirometry: step by step • ARTP • British Lung Foundation • The Primary Care Respiratory Society • Respiratory – RespiMat® patient resources Boehringer Ingelheim (boehringer-ingelheim.com) • Respiratory News & Advice (nursinginpractice.com) • Dudley pulmonary rehab - Template PI (dgft.nhs.uk) • PCN Study Day 2023 - Respiratory (mahealthcarevents.co.uk) • Register now for AstraZeneca Transforming Respiratory Care webinars
COPD	<ul style="list-style-type: none"> • Right Breathe • GOLD COPD 2022 strategy Independent professional body guideline Guidelines
Asthma	<ul style="list-style-type: none"> • Asthma UK • Asthma: diagnosis, monitoring and chronic asthma management • Global Initiative for Asthma • British guideline on the diagnosis and pharmacological management of asthma in children • British Thoracic Society guidelines for home oxygen use in adults: accredited by NICE • SIGN and BTS management of asthma in children guideline Independent professional body guideline Guidelines • CPD: Conducting a comprehensive asthma review (cogora.com) • FeNO testing for asthma diagnosis Primary Care Respiratory Society (pcrs-uk.org) • Diagnosis -Asthma • NHS Accelerated Access Collaborative » Fractional Exhaled Nitric Oxide (FeNO) (england.nhs.uk) • CYP Asthma Transformation Network • Advising patients on the management of nocturnal asthma (independentnurse.co.uk)

Continuation of Long Term Conditions

Hypertension	<ul style="list-style-type: none"> • British Heart Foundation • Blood Pressure UK • Hypertension in adults: diagnosis and management • Hypertension in adults: diagnosis and treatment • Hypertension: symptoms to look out for and treatment options (rcni.com)
CVD/AF/DVT	<ul style="list-style-type: none"> • QRISK®3-2018 risk calculator • Heart Rhythm Alliance • CVD risk assessment and management • NHS lipid management pathway NHS guideline Guidelines • Abdominal aortic aneurysm screening: standards report 2021 to 2022, NHS England, 9 February 2023 (kingsfundmail.org.uk) • Psychological self-help reduces anxiety and depression in heart disease patients (cogora.com) • Join our event: Accelerating progress on CVD (kingsfundmail.org.uk)
Heart Failure	<ul style="list-style-type: none"> • British Heart Foundation • British Society Guidelines • Home - Pumping Marvellous • Heart Failure UK Guidelines • NHS England » Managing heart failure @home information for patients
Cancer / Oncology	<ul style="list-style-type: none"> • Surviving Thyroid Cancer • Help Us Help You - Lung Cancer Symptoms • Breast Cancer Now • Macmillian • Bowel Cancer UK • Brain Trust • CRUK • Action Cancer • Foundation for Women's Cancer • NHS England » Cancer • Macmillan Cancer animations - What is cancer?
Chronic Kidney Disease	<ul style="list-style-type: none"> • Kidney.Org • Kidney Quality Improvement Partnership • Chronic kidney disease: the canary in the coal mine (practicenursing.com)

Continuation of Long Term Conditions

Liver Disease	<ul style="list-style-type: none"> • British Liver Trust • Liver Research • BRITISH ASSOCIATION FOR THE STUDY OF THE LIVER • LIVERnORTH • LIVER DISEASE AND CIRRHOSIS
Blood Disorders	<ul style="list-style-type: none"> • Blood Cancer UK • UK Thalassaemia Society • The ITP Support Association • UK-ITP Paediatric ITP Registry • The Haemophilia Society • UK MDS Forum • Pernicious Anaemia Society • Haemochromatosis UK
G.I	<ul style="list-style-type: none"> • GIST Cancer UK • Pernicious Anaemia Society • Crohns and Colitis
ENT	
G.U	
ME / CFS / Fibromyalgia	<ul style="list-style-type: none"> • ME Association • ME Research • Action for M.E • Fibromyalgia Action UK • Fibromyalgia UK • Home - Fibromyalgia Awareness UK (fibroawarenessuk.org) • Fibromyalgia - Symptoms, diagnosis and treatment BMJ Best Practice • Fibromyalgia - The Brain Charity
Neurological Conditions	<ul style="list-style-type: none"> • The Brain Tumour Charity • Narcolepsy.Org • ACNR • MS Society UK Information, research and support Multiple Sclerosis Society UK • Home MS Trust




Continuation of Long Term Conditions

<p>Musculoskeletal Conditions</p>	<ul style="list-style-type: none"> • Rheumatology • National Axial Spondyloarthritis Society • Musculoskeletal health • Musculoskeletal health: 5 year prevention strategic framework • Faculty of Occupational Medicine • Guide to embedding your first contact physiotherapy service • NHS England » Guide to adopting remote consultations in adult musculoskeletal physiotherapy services
<p>Endocrine Disorders / Metabolic Disorders</p>	<ul style="list-style-type: none"> • Society for Endocrinology • Turner Syndrome Support Society • Thyroid Eye Disease • British Thyroid Foundation • Thyroid UK • The Pituitary Foundation • Addisons Disease • Parathyroid UK • The Royal Osteoporosis Society • Metabolic Support UK
<p>Frailty</p>	<ul style="list-style-type: none"> • Recognising frailty • Identifying frailty • CLINICAL FRAILTY SCALE
<p>Dementia / Alzheimers</p>	<ul style="list-style-type: none"> • Dementia UK • Age UK - Understanding Dementia • Delirium Champions • Alzheimers Society
<p>Allergy / Auto-immune / Genetic Conditions</p>	<ul style="list-style-type: none"> • Allergy UK • British Society for Rheumatology • Addisons Disease • Managing latent autoimmune disease in adults (independentnurse.co.uk)

Continuation of Long Term Conditions


Dermatology	<ul style="list-style-type: none"> • British Association of Dermatologists • Eczema • The British Skin Foundation • Acne vulgaris: management • The Primary Care Dermatology Society • Acne.org • Allergy UK • Urticaria • Hives • Sunburn • Causes of cancer and reducing your risk • What is Rosacea? • Rosecea • The Rosacea Forum • Herpes Viruses Association • Shingles • Fungal Skin Infection - Foot • The Psoriasis Association • National Psoriasis Foundation • Melanoma • Skin Health Information • British Association of Plastic Reconstructive and Aesthetic Surgeons - Procedure Guides • Warts and verrucae • Dermatology • Home - Hyperhidrosis UK
Obesity	<ul style="list-style-type: none"> • Obesity UK • Weight management enhanced service SNOMED codes — NHS Networks • The NHS Digital Weight Management Programme • NHS Digital Weight Management Programme Referral Hub • How to refer from general practice
Pain Management	<ul style="list-style-type: none"> • Pain Concern • Review questions use of antidepressants for analgesia (outlook.com)
Osteoporosis / Falls	

Continuation of Long Term Conditions

Genomics / Genetics	
Loneliness	
Multi-Morbidity	<ul style="list-style-type: none"> • Multimorbidity • Multimorbidity / multiple long-term conditions (MLTC)
Minor Illness / First Contact Assessment / OSCE	<ul style="list-style-type: none"> • Fact Sheets - Self Care Forum • OSCE Checklists  (mlsend.com) • OSCE Flashcards  (mlsend.com) • 600+ OSCE Stations ✨ (mlsend.com) • Anatomy Flashcards  (mlsend.com) • Health A to Z • #EM3: East Midlands Emergency Medicine Educational Media • The Febrile Child (cogora.com) • COUGH IN CHILDREN (cogora.com) • SORE THROAT (cogora.com) • EARACHE (cogora.com) • Scarlet fever more commonly searched for than tonsillitis on NHS website last year (cogora.com) • Norovirus cases 'highest seen this time of year in over a decade' (cogora.com)
Other / Case Studies	<ul style="list-style-type: none"> • Topical testosterone: warn patients about risk of accidental transfer, says MHRA (outlook.com)
Winter / Summer Pressures	

End of Life Care	
End of Life Care / Bereavement	<ul style="list-style-type: none"> • ReSPECT for healthcare professionals • Hospice UK • Palliative and End of Life Care Profiles - OHID (phe.org.uk)
Flu / Covid-19 / Monkeypox	
Covid-19	
Flu	
Long covid	<ul style="list-style-type: none"> • Your Covid Recovery • Long Term Effects of Covid • Post Covid Syndrome - Long Covid • COVID-19 Yorkshire Rehabilitation Screening Tool • FOM Guidance • Long Covid Toolkit • Caring for People with Long Covid (qni.org.uk) • 'Psychosocially vulnerable' patients at higher risk of long Covid fatigue (cogora.com)
Monkey Pox	

News & Views

<p>Digital News / Remote Consultations / AI</p>	<ul style="list-style-type: none"> • Digital Health News Webinars • Digital Health News • NHS Digital • DigiHealthWell • Public Sector Events, Conferences and Training - Inside Government • Digital Transformation • Digital Health News - 9 February 2023 (mailchi.mp) •  Watch start-ups and scale ups battle for place in live Rewired Pitchfest final (mailchi.mp) • Digital Health Digest - 10 February 2023 (mailchi.mp)# • Your daily news updates from Digital Health (campaign-archive.com) • Digital Health Digest (kingsfundmail.org.uk) • Your daily news updates from Digital Health (campaign-archive.com)
<p>PSNC News / Pharmacy</p>	<ul style="list-style-type: none"> • National Pharmacy Association • Royal Pharmaceutical Society • Medicines Learning Portal • Specialist Pharmacy Service • PSNC Newsletter: 13th February (mailchi.mp) • NHS England » Pharmacy Manual • PSNC Newsletter: 10th February (mailchi.mp) • NHS England » 2022/23 community pharmacy contractual framework (CPCF) national clinical audit: Valproate audit • PSNC Newsletter: 15th February (mailchi.mp) • UK Commission report sets out blueprint for pharmacy professional leadership Join the Conversation (scwcsu.nhs.uk)
<p>Pulse / GP Online / HSJ / NB Medical</p>	<ul style="list-style-type: none"> • GP Online • HSJ • Pulse Today
<p>Primary Care Update / PCC / PPP</p>	<ul style="list-style-type: none"> • Public Policy Projects News • Primary Care Bulletin
<p>Proactive Care</p>	

Kings Fund	<ul style="list-style-type: none"> • The Kings Fund • Library services The King's Fund (kingsfund.org.uk) • Early bird rates still available Integrated care summit (kingsfundmail.org.uk) • Join our event: Accelerating progress on CVD (kingsfundmail.org.uk) • Health Management and Policy Alert: 10 February 2023 (kingsfundmail.org.uk) • How can we reduce health inequalities for people living with sickle cell disorder? (kingsfundmail.org.uk) • Health Management and Policy Alert: 14 February 2023 (kingsfundmail.org.uk) • Integrated care systems highlights (kingsfundmail.org.uk)
Health Care Leaders Newsletters	
World Health Organisation	<ul style="list-style-type: none"> • WHO • OpenWHO • OpenWHO Monthly Newsletter OpenWHO
IHCT / CCG / STP / Healthier Futures	<ul style="list-style-type: none"> • Black Country & West Birmingham CCG • Dudley Integrated Health and Care • Home :: Black Country Healthcare NHS Foundation Trust • SharePoint • Message from Sally Roberts & Staff News (23 February 2023) (sharepoint.com) • Message from Mark Axcell & Staff News (16 February 23) (sharepoint.com) • Message from Mark Axcell & Staff News (09 February 2023) (sharepoint.com) • Message from Mark Axcell & Staff News (02 February 2023) (sharepoint.com) • Issue 30 - Black Country Primary Care Brief (sharepoint.com) • Issue 29 - Black Country Primary Care Brief (sharepoint.com) • Issue 28 - Black Country Primary Care Brief (sharepoint.com)
NHSI / NHSE	<ul style="list-style-type: none"> • NHS England • NHS England » NHS Digital merges with NHS England
University / Student Nurses	
Medisa / Univadis / Geeky Medics / GP Notebook / Medscape	<ul style="list-style-type: none"> • Medisa • Geeky Medics • Medscape Nurses • GP Notebook • Geeky Medics - YouTube
Nurse Guidelines	
The Health Foundation	<ul style="list-style-type: none"> • The Health Foundation

Continuation of News & Views

The Health Care Leaders Update	<ul style="list-style-type: none"> • Health Care Leader News
Practice Index	
Innovation Agency	<ul style="list-style-type: none"> • Innovation Agency Exchange • It's the February 2023 newsletter! (mailchi.mp)
RCN	<ul style="list-style-type: none"> • RCN • Practice Nursing - Tools, guidance and key events for general practice nurses (40)
Cavell Trust	<ul style="list-style-type: none"> • December News
Nursing in Practice / Nursing Standard / Independent Nurse	<ul style="list-style-type: none"> • Nursing Times • JCN Newsletter • Nursing in Practice Bulletin • Independent Nurse • Nursing in Practice - Clinical • Nursing in Practice - Community Bulletin • Practice Nursing
QNI	<ul style="list-style-type: none"> • QNI • Talk To Us © – The Queen's Nursing Institute (qni.org.uk) • QNI opens consultation of community nursing standards (cogora.com) • Consultation on QNI Field Specific Standards – The Queen's Nursing Institute • New Award for Executive Community Nurse Leaders (mailchi.mp)
NMC	<ul style="list-style-type: none"> • NMC
CMO / CNO	<ul style="list-style-type: none"> • Chief medical officer Institute for Government • NHS England » Chief Nursing Officer for England • Nursing and Midwifery Matters Newsletter
HRA	<ul style="list-style-type: none"> • HRA Latest
Nice	<ul style="list-style-type: none"> • NICE • NICE recommends genetic test to prevent newborn babies going deaf News News NICE • NICE guidance updates criteria for diagnosis of UTI in women (cogora.com)
RCGP / BMA / The Lancet	<ul style="list-style-type: none"> • The Lancet • British Medical Journal • Royal College of General Practitioners • British Journal of General Practice

Continuation of News & Views

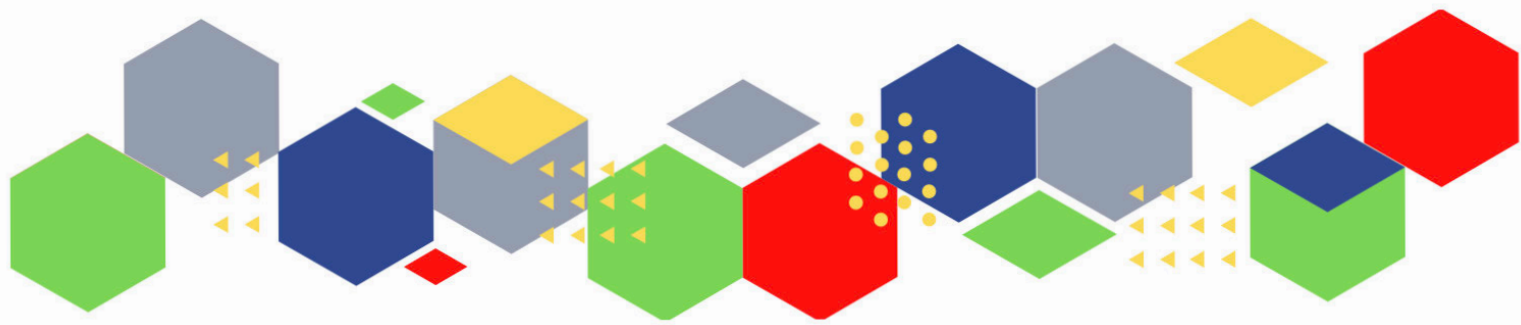
Nuffield Health	<ul style="list-style-type: none"> • Home The Nuffield Trust • The state of community health services in England The Nuffield Trust
Midlands Academic Health Science Network	<ul style="list-style-type: none"> • WMAHSN Network
Healthwatch	<ul style="list-style-type: none"> • Healthwatch
CPD News	<ul style="list-style-type: none"> • CPD News
Inside Government	
NHS Resolution	
Other	<ul style="list-style-type: none"> • Patients Association

Free Training / Webinars / Meetings / CPD

Development / Information and Knowledge	<ul style="list-style-type: none"> • Red Whale Training • Issues & Answers • Your personal invitation to Best Practice London 2023 (bestpracticeshow.co.uk) • UK Care Week - Wednesday 22nd March 2023 Thursday 23rd March 2023 NEC, Birmingham • Nursing in Practice Virtual: Respiratory (outlook.com) 4 April 2023 • Nursing in Practice Virtual: Public Health & Immunisations (outlook.com)13 June 2023 • The Tech Innovation Framework Expo 2023 (createsend1.com)14 – 28 February • BMJ Leader Live event (createsend1.com)24 February • Primary Care Review: What should be included in the Learning Disability Annual Health Check? (createsend1.com)2 March 1pm – 2.30pm. • Watch our series of General Practice webinars (createsend1.com) • Watch our series of Primary Care Network webinars (createsend1.com) • vNHS ConfedExpo 2023 (outlook.com) • Monday 27 February: Delegation of insulin administration within the Care Home Setting • Wednesday 1 March: Delegation of Insulin Administration: Frequently asked Questions. • final event in our series of bitesize sessions on urinary catheter care (outlook.com) • Thursday 9 March, 1pm to 1.45pm: How community nurses can harness social prescribing to improve outcomes • Thursday 30 March from 1pm to 2pm: A key to delivering Population Health Management • GSK: Register Now For Our, Shingles Webinar (contains promotional content) (cogora.com) • Best Practice London 8-9 March 2023
---	---

Free to RCN	<ul style="list-style-type: none"> • RCNi events RCNi • Online learning for nurses and student nurses RCNi Learning
MIMMs Learning	
Eventbrite	<ul style="list-style-type: none"> • Part 2 - Hyperkalaemia in Heart Failure Registration, Mon 6 Mar 2023 at 20:00 Eventbrite • Part 3 - Case studies in hyperkalaemia Registration, Mon 27 Mar 2023 at 20:00 Eventbrite
e-Learning for Health	<ul style="list-style-type: none"> • Health Inequalities - elearning for healthcare (e-lfh.org.uk)
Skills for Health	<ul style="list-style-type: none"> • Specialist eLearning for health and care professionals (mailchi.mp)
YouTube	<ul style="list-style-type: none"> • NHS England • Black Country Healthcare - YouTube
Future Proof Health Training	<ul style="list-style-type: none"> • Training
BCWB Training Hub	<ul style="list-style-type: none"> • Latest news from the Black Country Training Hub (campaign-archive.com)
Evidence based care	
Podcasts	<ul style="list-style-type: none"> • The Nursing Handover Podcast • Nursing Standard Podcasts • Nursing Matters • Welcome to the BJN Podcast • Cygnet Health Care Podcast • EBN podcast • This Is Nursing • Teach me, I'm a Nurse • Past Caring • RCGP eLearning podcast • The BMJ Podcast • Primary Care Network podcasts • The Professional Support Unit's Pandemic Podcast • The Next GenCast

Apps	<ul style="list-style-type: none"> • Nursing In Practice Reference – Apps on Google Play • Nursing In Practice Reference on the App Store (apple.com) • Practitioner Health Mental Wellbeing App is for any member of the primary care team (createsend1.com)
Area Bulletins	
Research	<ul style="list-style-type: none"> • Science Daily • Multimorbidity / multiple long-term conditions (MLTC) • National Institute for Health and Care Research • HRA Latest • NHS Knowledge and Library Hub - Knowledge and Library Services • OpenAthens • Resources for advanced searching • How to access the RMM or Maudsley online • Online access to Medical and Healthcare books from Oxford University Press • BMJ Best Practice • Critically Appraising the Evidence Base programme • Kortext • LibKey Nomad • Literature Searching programme • Tools and Techniques for Mobilising Knowledge • Health Literacy • Your Health Collection 2022 • Be Part of Research now available through the NHS App NIHR
Blogs/Vlogs	<ul style="list-style-type: none"> • Blog NB Medical
Freebies	<ul style="list-style-type: none"> • Blue Light Card
Campagne Links	<ul style="list-style-type: none"> • 2023 D&I Calendar (hubspotusercontent-eu1.net)
Other	



Thank you for reading Future Proof Health's weekly news!

If you missed past issues, please click [here](#) to view them

More information can be found on our website, [here](#)

Don't forget to like us on [Facebook](#) & Follow us on [Twitter](#)

