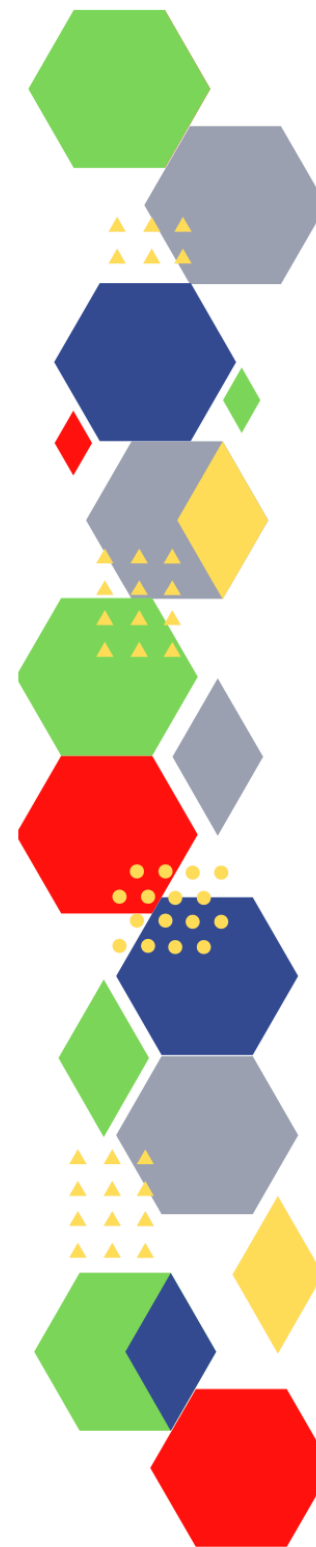


Future Proof Health Presents

Weekly News

1st July 2021



Communication	
Communication with Patients	Shared decision making Good communications with patients waiting for care
Communication within teams	
People and Personal Development	
Personal / HR & People Development / Leadership	

Quality & Service Improvement

Quality & Service Improvement	
Quality & Service Improvement	Data strategy to support delivery of patient centred care Update to GP contract arrangements for 2021/22
New Roles in General Practice	
Personal Practice & Development	
NHS Self Care & Resilience	TalkToUs©
ICS	
Leadership	

Health, Safety & Security

[Weekly Digest: health and safety news, information and advice](#)

CQC	A new strategy for the changing world of health and social care - CQC's strategy from 2021
Vaccines & Drugs	
Drug / Device Alerts (MHRA)	Medicines and Healthcare products Regulatory Agency
Emergency Situations	
Safe Guarding	
Practice Policies	
Audit	
Information Governance	

Personalised Care	
Personalised Care / Self Care	Self Care Forum Newsletter: June 2021 Self Care Week Resources Personalised Care Institute
Social Prescribing / Health Coaching	
Equality & Diversity	
Equality & Diversity	Ethnic health inequalities and the NHS
Inclusion Health	
Poverty / Homelessness	
Health Inequalities	My role in tackling health inequalities: a framework for allied health professionals Socially excluded older people and their access to health and care services: insights from professionals

Health & Well-Being	
Health & Well-Being	
Assessment	
Obtaining Samples	
Management of Emergency Situations	
Management of Emergency Situations	
Red Flags	
Sepsis	
Therapeutic Monitoring	

Role Specific

Cervical Cytology	Launch of Cervical Sample Taker Database (CSTD)
Ear Care	
Wound Management	JWC Masterclass on Electrical Stimulation
Minor Surgery	

Health Promotion / Health Screening	
Health Promotion / Population Health	The Self Care Forum fact sheets Getting back on track to eliminate smoking after the pandemic E-cigarettes can be a useful tool for helping smokers to quit
Health Screening	
PHE	
NHS Health Check	
NOIDS	
Mental Health / Learning Disability / Disability	
Mental Health	Notes on the Mind Funding boost for young people's mental health services
Learning Disability	Care for people with a learning disability during the pandemic
Disability	

Immunisation / Travel Health	
Flu	
Children	
Adults	
Vaccine Update	
Travel Health	
Covid Vaccine	<u>Leading social media platforms unite to support COVID-19 vaccine drive</u> <u>COVID-19 vaccination FAQs: students in Higher Education Institutions</u> <u>COVID-19 vaccination: information for healthcare practitioners</u>

From Cradle to...	
Child Health	Fever in Children Encouraging your patients to self-manage their dry skin Scientists say active early learning shapes the adult brain
Adolescent Health	THE ECONOMIC IMPACT OF COVID-19 ON YOUNG PEOPLE IN THE UNITED KINGDOM
Mens Health	Urine symptoms in men New programme to improve support services for men with prostate cancer
Women's Health	
Trans / Non-binary Health	
The Older Population	Everything You Need to Know About Urinary Incontinence Urinary Incontinence (Leakage) in Adults
Carers / Social Care	Adult Social Care Markets A new strategy for the changing world of health and social care - CQC's strategy from 2021
Complex Needs	

Family Planning & Sexual Health	
Family Planning	
Reproductive	
Sexual Health	
Care of Patients with Long Term Conditions	
LTC	How to prioritise chronic care in light of COVID-19 disruptions
Diabetes & Pre-Diabetes	People who eat a healthy diet including whole fruits may be less likely to develop diabetes New horizons in diabetes care Finerenone in Reducing Kidney Failure and Disease Progression in Diabetic Kidney Disease (FIDELIO-DKD) trial
Respiratory	Clinical webinars Cough in Adults
COPD	
Asthma	
Hypertension	
CVD	Primary care holds the key to CVD prevention

Continuation of Long Term Conditions

Heart Failure	
Cancer / Oncology	Living with Pancreatic Cancer webinar: Ask a Dietitian
Chronic Kidney Disease	
Liver Disease	
G.I	Heartburn & Indigestion Constipation in Adults Sore Throat
G.U	Urine symptoms in men

Continuation of Long Term Conditions

Neurological Conditions	Headache & Migraine
Musculoskeletal Conditions	Lower Back Pain Sprains and strains SUPPORTING PEOPLE WITH ARTHRITIS WAITING FOR SURGERY
Endocrine Disorders	
Frailty	
Dementia	
Dermatology	Eczema Skin Cancer: Case studies, examination, when to refer and treatment Mental health, Covid and skin problems - where are we now? Acne (spots)

<i>Continuation of Long Term Conditions</i>	
Allergy / Auto-immune Conditions	<u>Addressing the Problem of Long-Term Organ Damage in SLE</u>
Obesity	<u>Junk food game helps people eat less and lose weight</u> <u>It's never too early to begin healthy eating habits</u> <u>Enhanced service specification: Weight management 2021/22</u>
Multi-Morbidity	
Other	<u>Middle ear infection (acute otitis media)</u> <u>The Common Cold in Adults</u> <u>Acute Sinusitis in Adults</u> <u>Venous Disease - Looking after your legs</u>

End of Life Care	
End of Life Care	
Covid-19	
Covid-19	Boosting your mood Getting help from your pharmacy THE ECONOMIC IMPACT OF COVID-19 ON YOUNG PEOPLE IN THE UNITED KINGDOM Common cold combats COVID-19, study finds Every action counts Five principles for post-COVID-19 digital healthcare UK COVID-19 Update: Delta Plus Variant, Health Trust Leaders Fear Winter Pressure
Long Covid	Long COVID and Post-COVID Syndrome in Adults Enhanced service specification: Long COVID 2021/22 New research shows 2 million people may have had long COVID UK COVID-19 Update: Long COVID Concerns and Lockdown Uncertainties

News & Views	
Digital News / Remote Consultations	General practice COVID-19 recovery Switched on NAPC Digital publication
PSNC News	23rd June / 24th June / 25th June / 28th June / 29th June / 30th June
60 Second GP / Pulse / GP Online / HSJ	
Primary Care Update / PCC	Primary Care Bulletin
Kings Fund	Weekly News / Health Management and Policy Alert / Health and Well Being Bulletin / Digital Health Digest / Events Update
World Health Organisation	
Midlands Academic Health Science Network	Network News
Health Watch	
Black Country Bulletins	Dudley Council Email Bulletin

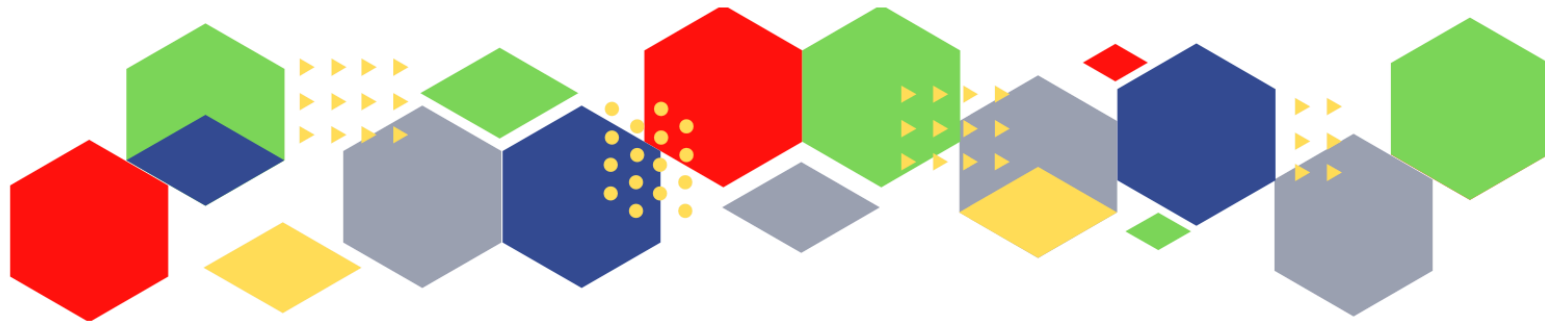
<i>Continuation of News & Views</i>	
IHCT / CCG / STP / Healthier Futures	
University / Student Nurses	
Medisa / Univadis / Geeky Medics / GP Notebook / Medscape	<u>Univadis Newsletter</u>
MIMS	<u>MIMS Newsletter</u>
The Health Foundation	
The Health Care Leaders Update	

Continuation of News & Views

PHE	
Innovation Agency	
RCN	RCN West Midlands Region Events RCN Primary Care Updates
Nursing in Practice / Nursing Standard / Independent Nurse	Independent Nurse Newsletter
QNI	Queen's Nurse and Call the Midwife in Conversation
NMC	Newsletter for Midwives
CNO	
Nice	Shared decision making NICE Newsletter
RCGP / BMA	FREE eLearning resources Moral distress and moral injury

Free Training / Webinars / Meetings / CPD

<p>Development / Information and Knowledge</p>	<p>Public Participation and System Transformation webinar programme</p> <p>GP referral pathway to the Community Pharmacist Consultation Service</p>
<p>BCWB Training Hub</p>	<p>Black Country and West Birmingham Primary Care Update</p>
<p>Research</p>	<p>Vitamin D deficiency may increase risk for addiction to opioids and ultraviolet rays</p> <p>Adults who skip morning meal likely to miss out on nutrients</p> <p>Common cold combats COVID-19, study finds</p> <p>HRA Latest: Protections for patient data</p> <p>£64 million funding to back UK-wide plan to strengthen clinical research delivery</p>
<p>Freebies</p>	<p>Save on hundreds of cinemas across the UK</p> <p>FREE STUFF AND DISCOUNTS FOR NHS</p> <p>Blue Light Card Newsletter</p>



Thank you for reading Future Proof Health's weekly news!
If you missed past issues, please click [here](#) to view them

More information can be found on our website, [here](#)

Don't forget to like us on [Facebook](#) 

& Follow us on [Twitter](#) 

