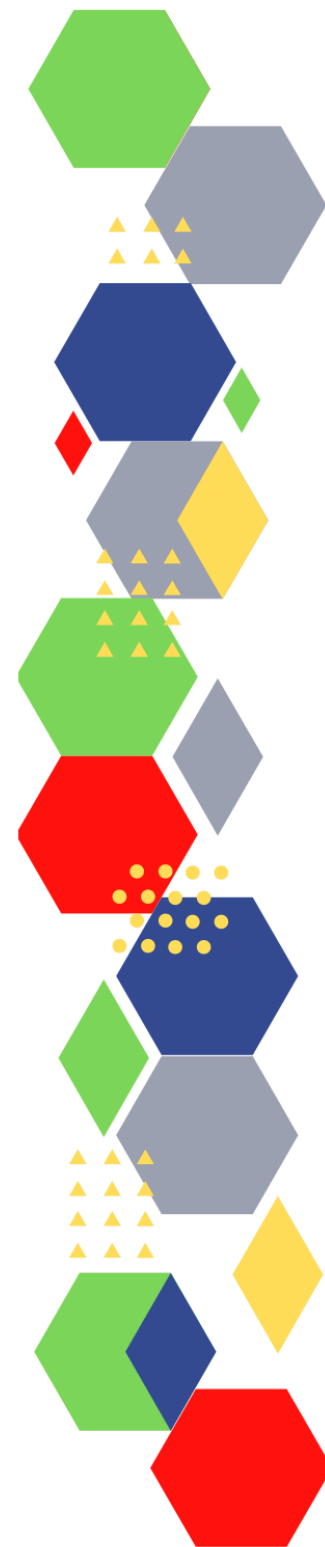


Future Proof Health Presents

Weekly News

12th August 2021



Communication	
Communication with Patients	
Communication within teams	
People and Personal Development	
Personal / HR & People Development / Leadership	<u>Job Vacancies</u>

Health, Safety & Security

[HSE Weekly Digest eBulletin](#)

CQC	<u>An update on how we're implementing our new strategy</u> <u>Statement on COVID-19 vaccination of people working/deployed in care homes: the role of the Care Quality Commission</u>
Vaccines & Medications	
Drug / Device Alerts (MHRA)	
Emergency Situations	
Infection Control	
Safe Guarding	
Practice Policies	
Audit	
Information Governance	

Quality & Service Improvement	
Quality & Service	
Improvement	
New Roles in General Practice	The HealthCoachPlus Programme
Personal Practice & Development	
NHS Self Care & Resilience	
ICS	Misgivings Over Integrated Care Systems in England: Poll Where does the learning behind the Integrated Care System (ICS) model come from internationally, and what is the evidence of the impact of similar models? Primary care networks: Two years on Where next for primary care?
Leadership	

Personalised Care	
Personalised Care / Self Care	
Social Prescribing / Health Coaching	
Equality & Diversity	
Equality & Diversity	
Inclusion Health	
Poverty / Homelessness	When We Work Together – learning the lessons
Health Inequalities	Health inequalities: place-based approaches to reduce inequalities A perfect storm - health inequalities and the impact of COVID-19
Migrant Health	

Health & Well-Being	
Health & Well-Being	
Assessment	
Obtaining Samples	
Management of Emergency Situations	
Management of Emergency Situations	
Red Flags	
Sepsis	
Therapeutic Monitoring	

Role Specific	
Cervical Cytology	New NHS Cervical Screening Management System starting 2021
Ear Care	
Wound Management	JWC Masterclass on Electrical Stimulation
Minor Surgery	
Health Promotion / Health Screening	
Health Promotion / Population Health	Everybody active, every day: 5 years on Campaign launched to help public get healthy this summer
Health Screening	
PHE	
NHS Health Check	
NOIDS	Notifications of infectious diseases (NOIDs) Syndromic surveillance: systems and analyses
Addiction/Smoking	Over 50s Alcohol Helpline

Immunisation / Travel Health

[Vaccinations and infections](#)

<p>Flu</p>	<p><u>National flu immunisation programme 2021 to 2022 letter</u> <u>National flu and COVID-19 surveillance reports: 2021 to 2022 season</u> <u>NHS England Enhanced Services Influenza Specifications</u> <u>Community Pharmacy Seasonal Influenza Vaccine Service</u> <u>National flu immunisation programme plan</u> <u>Flu vaccination: letter template for children aged 2 and 3 years</u> <u>Flu vaccination: letter template for at risk patients and carers</u> <u>Flu vaccination: who should have it this winter and why</u> <u>Flu vaccination in schools</u> <u>Flu vaccination: who should have it this winter and why</u></p>
<p>Children</p>	<p><u>BCG immunisation programme: changes from September 2021 letter</u></p>

Continuation of Immunisation / Travel Health

Adults	New shingles vaccine awaits decision on NHS use
Vaccine Update	
Travel Health	
Covid Vaccine	Chief midwife urges pregnant women to get NHS COVID jab Updated JCVI guidance for the vaccination of children and young people COVID-19 vaccination NICE publishes new rapid guideline to diagnose and treat rare blood clotting condition associated with COVID-19 vaccination New study into COVID-19 vaccine dose interval for pregnant women COVID-19: the green book, chapter 14a COVID-19 vaccination: what to expect after vaccination COVID-19 vaccination: women of childbearing age, currently pregnant or breastfeeding Vaccination of people working or deployed in care homes: operational guidance New NHS chief urges young people to get jabbed JCVI issues updated advice on COVID-19 vaccination of young people aged 16 to 17

Mental Health / Learning Disability / Disability	
Mental Health	Severe Mental Illness COVID-19 mental health and wellbeing surveillance: report Common Mental Health Disorders Crisis Care Profile
Learning Disability	
Disability	New quick guide for occupational therapists working with children and adults with developmental coordination disorder Children and young people with severe complex needs require coordinated health, social and education services, says NICE in draft guideline
Family Planning & Sexual Health	
Family Planning	
Reproductive	
Sexual Health	

From Cradle to...	
Infant Health	
Child Health	Health chiefs issue warning as childhood respiratory infections rise ahead of winter CPD module: nutrition and risk of obesity in school-age children Atopic eczema in under-12s: diagnosis and management New quick guide for occupational therapists working with children and adults with developmental coordination disorder
Adolescent Health	Changes to the vaccine of the HPV immunisation programme
Mens Health	
Women's Health	Supporting mental healthcare in a maternity and neonatal setting: Good practice guide and case studies Bacterial Vaginosis
Trans / Non-binary Health / LGBTQ+	
The Older Population	
Carers	Sandwell Young Carers
Complex Needs	

Care of Patients with Long Term Conditions	
LTC	
Diabetes & Pre-Diabetes	Living Well Taking Control Meet DAFNE and her friends Desmond, Bertie, Sadie, Delia and others
Respiratory	New virtual learning and support platform developed with nurses, for nurses GP mythbuster 83: Spirometry in general practice
COPD	
Asthma	
Hypertension	
CVD/AF	Modern Prevention of Cardiovascular Disease in Primary Care: A Multi-Pronged approach

Continuation of Long Term Conditions

Heart Failure	
Cancer / Oncology	Impact of COVID-19 on cancer diagnosis and management
Chronic Kidney Disease	Patient groups welcome additional NHS support to cover cost of hospital travel The management of chronic kidney disease (CKD) in primary care
Liver Disease	
Blood Disorders	Haemolytic anaemia EKU2020.3: Venous thromboembolic diseases Full blood count (FBC) Interpretation
G.I	Migraine and gastrointestinal disorders in middle and old age: A UK Biobank study
ENT	
G.U	

Continuation of Long Term Conditions

Neurological Conditions	
Musculoskeletal Conditions	Musculoskeletal (MSK) Advanced Practice and Governance Framework How we can best support patients with musculoskeletal conditions
Endocrine Disorders	Levothyroxine Counselling – OSCE Guide
Frailty	
Dementia	Football Dementia Risk Linked to Playing Position and Career Length Dementia Profile
Dermatology	
Allergy / Auto-immune Conditions	Autoimmune thyroid disease

<i>Continuation of Long Term Conditions</i>	
Obesity	
Pain Management	
Multi-Morbidity	
Minor Illness/First Contact Assessment	
Other	

End of Life Care	
End of Life Care	
Covid-19	
Covid-19	<u>UK COVID-19 Update: Pandemic Care Rated, Amber Travel 'Watchlist', Job Incentives</u> <u>COVID-19 mental health and wellbeing surveillance: report</u> <u>Wider impacts of COVID-19 on health monitoring tool</u>
Long Covid	<u>Inaugural Broadcasts 2021</u> <u>Short Report on Long COVID</u> <u>RCGP eLearning podcast</u> <u>Enhanced service specification: Long COVID 2021/22</u>

News & Views	
Digital News / Remote Consultations	Digital Health News Webinars Digital Health News The Digital Health Autumn Leadership Summit COVID-19 and the digital divide
PSNC News	4th August / 6th August / 9th August / 10th August / 11th August
60 Second GP / Pulse / GP Online / HSJ	60 Second GP
Primary Care Update / PCC	Primary Care Bulletin
Kings Fund	Weekly News / Health Management and Policy Alert / Health and Well Being Bulletin / Digital Health Digest / Events Update
World Health Organisation	OpenWHO Monthly Newsletter
Midlands Academic Health Science Network	
Health Watch	
Black Country Bulletins	

<i>Continuation of News & Views</i>	
IHCT / CCG / STP / Healthier Futures	Primary Care Communications toolkit Who can get vaccinated? Partnership News
University / Student Nurses	
Medisa / Univadis / Geeky Medics / GP Notebook / Medscape	Univadis Newsletter Medisa
MIMS	Latest MIMS news
The Health Foundation	
The Health Care Leaders Update	Low life expectancy in Glasgow, and what to do about it

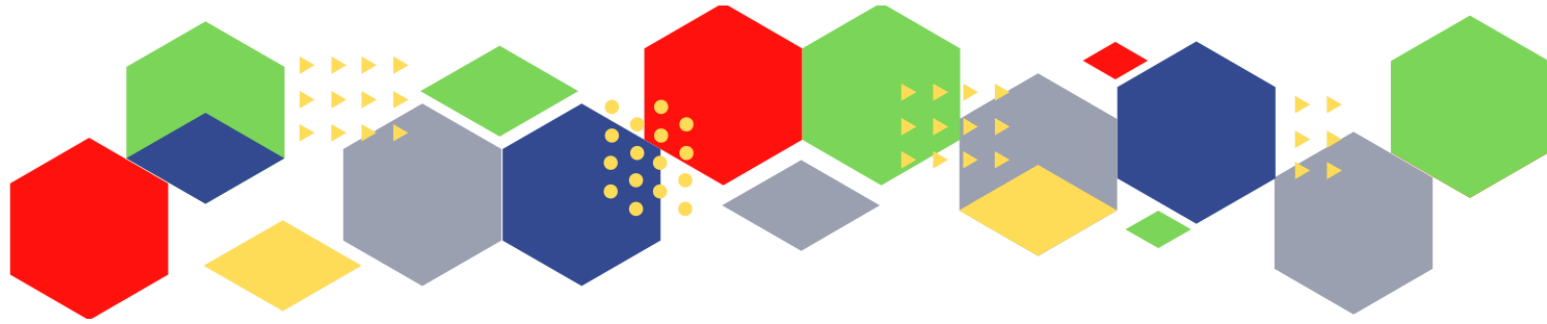
Continuation of News & Views

PHE	
Innovation Agency	
RCN	RCNiPlus Members in England and Wales who work in the NHS to consider whether a 3% award is acceptable Helping staff who feel afraid when an error occurs
Nursing in Practice / Nursing Standard / Independent Nurse	Nursing in Practice Clinical Nursing in Practice Bulletin Nursing in Practice Learning Practice Nursing Newsletter Independent News GPN Bulletin
QNI	

<i>Continuation of News & Views</i>	
NMC	
CNO	
Nice	
RCGP / BMA	
Midlands Academic Health Science Network	<u>WMAHSN Network Impact Report</u>

Free Training / Webinars / Meetings / CPD

Development / Information and Knowledge	RCN Events - West Midlands MIMS Learning Live THE BEST PRACTICE SHOW – 13-14 October 2021 FREE Cancer Screening Webinar Wound Expo
BCWB Training Hub	
Research	
Freebies	



Thank you for reading Future Proof Health's weekly news!
If you missed past issues, please click [here](#) to view them

More information can be found on our website, [here](#)

Don't forget to like us on [Facebook](#) 

& Follow us on [Twitter](#) 

