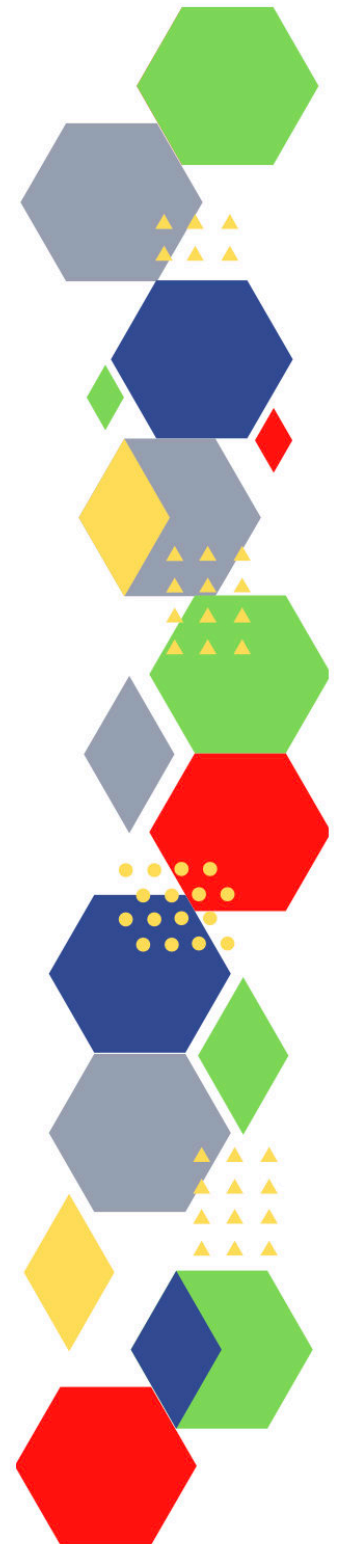
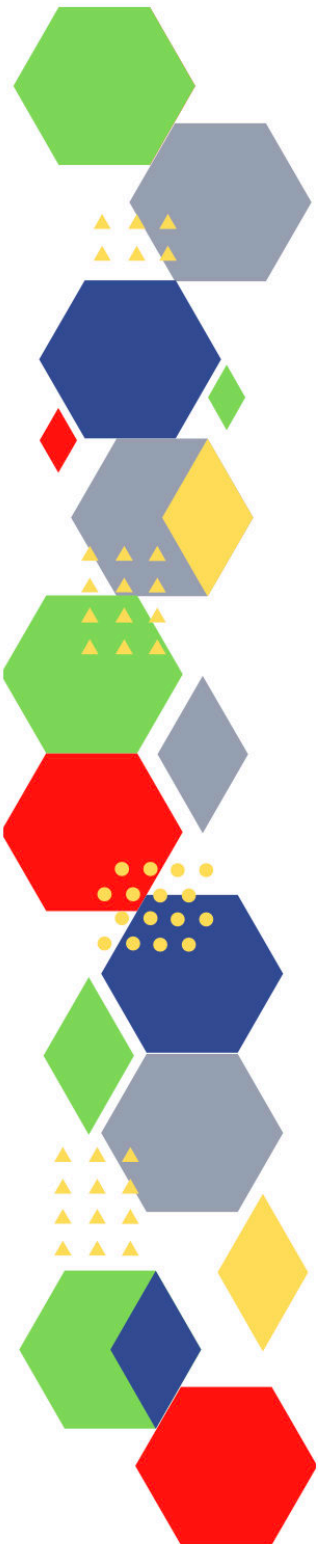




Future Proof Health Presents

Weekly News

30th September 2022



Communication	
Communication with Patients	
Communication within Teams	
Consent	<ul style="list-style-type: none"> • Gillick competency and Fraser guidelines • ReSPECT for healthcare professionals
People and Personal Development	
Personal / People Development / Leadership	<ul style="list-style-type: none"> • Accountability and delegation in practice
NHS Employers / HR / NHS Pension	<ul style="list-style-type: none"> • NHS Employers • Pensions Online
Health, Safety & Security	
	<ul style="list-style-type: none"> • NPSA • Control of Substances Hazardous to Health (COSHH)
Gov UK - NHS	
CQC	<ul style="list-style-type: none"> • GP mythbusters • Prescribing the resolution of conflict in general practice • PEOPLE FIRST - Care Quality Commission (cqc.org.uk) • What we are doing when - Care Quality Commission (cqc.org.uk)
MIMS	<ul style="list-style-type: none"> • Prescribing Update
Antibiotic steward-ship / Anti-microbial resistance	<ul style="list-style-type: none"> • Research update: Social factors in remote consulting and antibiotic prescribing (nursinginpractice.com) • Quick guide for organisational WAAW videos • Combatting antibiotic resistance (independentnurse.co.uk) • Antibiotic Guardian WAAW 2021 Online Knowledge Cafe <p>#AntibioticGuardain #KeepAntibioticsWorking #WAAW2022</p>

Drug / Device Alerts (MHRA)	<ul style="list-style-type: none"> • Drug Safety Update (mhradrugsafety.org.uk)
Emergency Situations	<ul style="list-style-type: none"> • Resuscitation Council UK
Infection Control / Infection Statics	<ul style="list-style-type: none"> • NHS England » National infection prevention and control • Vulnerable consumers advised of ongoing risk of Listeria associated with ready to eat smoked fish Food Standards Agency • Clostridioides difficile infection: guidance on management and treatment - GOV.UK (www.gov.uk)
Vaccines / Medications / Prescribing	<ul style="list-style-type: none"> • Protocol for ordering, storing and handling vaccines • A Competency Framework for all Prescribers • Non-medical prescribing • The Human Medicines Regulations 2012 • RCN - Non-medical prescribers • Royal Pharmaceutical Society • Standards for prescribing • Clinical Negligence Scheme for General Practice • Home - electronic medicines compendium (emc) • Drug shortages - live tracker MIMS online
Safe Guarding	<ul style="list-style-type: none"> • Female genital mutilation (FGM) • PREVENT • Child protection system in the UK • Safeguarding Adults • Safeguarding children: detailed information • Domestic abuse victim services, England and Wales: 2022 (www.gov.uk) • Wolverhampton only - WST Training Update - September 2022 (govdelivery.com)
Practice Policies	
Audit	
Information Governance / Record Keeping	<ul style="list-style-type: none"> • Guide to Data Protection • Supporting general practice – Medical record keeping • PRSB Newsletter: August 2022 (theprsb.org) • The Duty of Candour in Healthcare Forum 2022 (insidegovernment.co.uk)

Quality & Service Improvement	
Quality, Service & Improvement	<ul style="list-style-type: none"> • The PRSB • General Practice Assessment Questionnaire (GPAQ) • Healthwatch • NHS Five Year Forward View • General Practice Forward View • NMC • Dr Jon Griffiths Blog • NHS Confed
Roles in General Practice	<ul style="list-style-type: none"> • Standards for nursing associates • GP mythbuster 57: Health Care Assistants in General Practice • Practice Nursing - News Focus (15)
Revalidation	
Personal Practice & Development	
Practice Management	<ul style="list-style-type: none"> • Institute of General Practice Management • Practice Index • General practice readiness checklist - NHS Digital
Employment / Retirement / Legacy Nursing	
NHS Self Care & Resilience	<ul style="list-style-type: none"> • Samaritans • Mental Health at work • Calm • Supporting our NHS people • The Hub :: Black Country Healthcare NHS Foundation Trust
Practice Transformation / Innovation Agency	<ul style="list-style-type: none"> • NHS England » Creating a highly usable and accessible GP website for patients

Future of NHS / General Practice / NHS Recovery	<ul style="list-style-type: none"> • NHS England • NHS England » Primary care • NHS mandate 2022 to 2023 • Our plan for patients - GOV.UK (www.gov.uk) • REIMAGINING HEALTH A framing paper • New claims baseline to support future improvements in general practice care - NHS Resolution • Read the report (kingsfundmail.org.uk)
ICS / ICB / ICP / PCN Commissioning	<ul style="list-style-type: none"> • Integrated care (england.nhs.uk) • What we've heard :: Black Country ICS
QOF / PHOF / DES / LES / NHS Contract / CQRS / CQUIN	<ul style="list-style-type: none"> • Integrated care (england.nhs.uk) • What we've heard :: Black Country ICS
Leadership / Innovation	<ul style="list-style-type: none"> • Leadership Academy
Greener NHS	
Personalised Care	
Personalised Care / Self Care / Social Prescribing / Health Coaching	<ul style="list-style-type: none"> • Self Care forum • Personalised Care Institute • Personalised care • Social Prescribing Academy • Social Prescribing Interfaces
Group consultation	
Working Differently	
Shared Decision Making	<ul style="list-style-type: none"> • Personalised Care Institute
Equality & Diversity	
Equality & Diversity	<ul style="list-style-type: none"> • Public Health Profiles
Inclusion Health	<ul style="list-style-type: none"> • Health Creation Academic Network • Inequality on the inside

Poverty / Homelessness	<ul style="list-style-type: none"> • Crisis • This is Poverty • Health and Housing Conference 2022 13 Oct, 20229:00 am-4:20 pm London (insidegovernment.co.uk) • A new way of working: ending rough sleeping together
Population Health / Health Communities	
Thrive Into Work	<ul style="list-style-type: none"> • Thrive into Work • Thrive into Work Referral form
Health Inequalities	<ul style="list-style-type: none"> • NHS News • What are health inequalities? The King's Fund (kingsfund.org.uk) • Reducing inequalities by investing in health-promoting care (eurohealthnet.eu) • Tackling the elective backlog – exploring the relationship between deprivation and waiting times With the elective care backlog on the rise, Jonathon Holmes and Danielle Jefferies explore the relationship between waiting lists and deprivation and consider the causes and potential solutions. By Jonathon Holmes , Danielle Jefferies - 27 September 2021 5-minute read (kingsfund.org.uk)
Trans / Non-binary Health / LGBTQ+	<ul style="list-style-type: none"> • LGBT Foundation • Surgery staff grab sheet (squarespace.com) • Trans inclusive organisations — TransActual • TransActual - Healthcare • CliniQ • LGBT Foundation - Healthcare Professionals • Acting on the evidence: ensuring the NHS meets the needs of trans people The King's Fund (kingsfund.org.uk)
Migrant / Refugee Health	<ul style="list-style-type: none"> • THE REFUGEE & MIGRANT CENTRE • Barriers and Opportunities: Improving access to mental health support for refugees and people seeking asylum • Action needed to improve refugee and migrant health (independentnurse.co.uk)
Traveller / Gypsy / Romany Health	<ul style="list-style-type: none"> • Gypsy Roma and Traveller History and Culture The Traveller Movement • Friends, Families and Travellers (gypsy-traveller.org)
Veterans Health	<ul style="list-style-type: none"> • The first call for help takes courage

Management of Emergency Situations	
Management of Emergency Situations	
111 / Emergency Care	
First Contact	<ul style="list-style-type: none"> • Supporting general practice – Common pitfalls • Paediatrics for Primary Care (and anyone else) (gppaedstips.blogspot.com)
Red Flags	
Sepsis	<ul style="list-style-type: none"> • Sepsis: recognition, diagnosis and early management • Sepsis guidance implementation advice for adults • Sepsis in Children • Sepsis Trust • quick SEPSIS RELATED ORGAN FAILURE ASSESSMENT • What nurses need to know about sepsis, and how to act (independentnurse.co.uk)
Therapeutic Monitoring	
OSCE	<ul style="list-style-type: none"> • Geeky Medics • Abdominal Examination - Demonstration - YouTube • Cardiovascular Examination - Demonstration - YouTube • Respiratory Examination - Demonstration - YouTube • Physical Diagnosis Skills - University of Washington School of Medicine
Role Specific	
Cervical Cytology	<ul style="list-style-type: none"> • Guide to the interim assessment • British Association for Cytopathology • Lab Tests Online
Ear Care	<ul style="list-style-type: none"> • Ear Care Centre • RNID
Wound Management	<ul style="list-style-type: none"> • Microworld • Tissue Viability Society • The BLS

Minor Surgery	
Obtaining Samples / Results	<ul style="list-style-type: none"> • Lab Tests Online
Health Promotion / Health Screening	
Health Promotion / Population Health	<ul style="list-style-type: none"> • Better Health • Public toilets in London • Reducing inequalities by investing in health-promoting care (eurohealthnet.eu)
Health Screening	<ul style="list-style-type: none"> • PHE Screening • Cancer screening: the urgent shouldn't crowd out the important The King's Fund (kingsfund.org.uk)
PHE / OHID / UKHSA	<ul style="list-style-type: none"> • Knowledge & Library Services • Campaign Resources • Public Health Profiles • Health Publications • Health Profile for England 2021 • English indices of deprivation 2019
NHS Health Check	<ul style="list-style-type: none"> • NHS Health Check
NOIDS / PHE Surveillance / Syndromic Surveillance	<ul style="list-style-type: none"> • Coronavirus (Covid-19) infection survey, UK: 23 September 2022, Office for National Statistics, 23 September 2022 • Coronavirus (Covid-19) vaccination uptake in school pupils, England: up to 22 July 2022, Office for National Statistics, 23 September 2022 • Deaths registered weekly in England and Wales, provisional: week ending 16 September 2022, Office for National Statistics, 27 September 2022 • Monthly mortality analysis, England and Wales: August 2022, Office for National Statistics, 23 September 2022 • National flu and Covid-19 surveillance report: 22 September 2022 (week 38), UK Health Security Agency, 22 September 2022 • Notifiable diseases causative agents: week 38 (week ending 25 September 2022), UK Health Security Agency, 26 September 2022 • Remote health advice: weekly bulletins for 2022 (www.gov.uk) • GP in hours: weekly bulletins for 2022 (www.gov.uk) • Syndromic surveillance: weekly summaries for 2022 - GOV.UK (www.gov.uk)

<i>Continuation of Health Promotion / Health Screening</i>	
NOIDS / PHE Surveillance / Syndromic Surveillance	<ul style="list-style-type: none"> • National ambulance syndromic surveillance: weekly bulletins 2022 (www.gov.uk) • Emergency department: weekly bulletins for 2022 (www.gov.uk) • GP out-of-hours syndromic surveillance: weekly bulletins for 2022 (www.gov.uk) • Notifications of infectious diseases (NOIDs) - GOV.UK (www.gov.uk)
UK GOV Deaths / Suicide / Palliative Care	
UK GOV Infectious Disease Monitoring	<ul style="list-style-type: none"> • Remote health advice: weekly bulletins for 2022 (www.gov.uk) • GP in hours: weekly bulletins for 2022 (www.gov.uk) • Syndromic surveillance: weekly summaries for 2022 - GOV.UK (www.gov.uk) • National ambulance syndromic surveillance: weekly bulletins 2022 (www.gov.uk) • Emergency department: weekly bulletins for 2022 (www.gov.uk) • GP out-of-hours syndromic surveillance: weekly bulletins for 2022 (www.gov.uk)
Addiction/Smoking	<ul style="list-style-type: none"> • Drink Coach • Stop smoking interventions and services
Immunisation / Travel Health	
<ul style="list-style-type: none"> • Joint Committee on Vaccination and Immunisation • Immunisation against infectious disease • West Midlands Immunisation Service • Vaccination of individuals with uncertain or incomplete immunisation status • Immunisation Queries: Immunisation information for Health Care Services within the West Midlands area • Immunisation 	

Continuation of Immunisation / Travel Health

Flu

- [Flu and flu vaccinations](#)
- [The national influenza immunisation programme 2021 to 2022](#)
- [Flu vaccines for the 2021 to 2022 season poster](#)
- [Appendix C: Flu vaccinator competency assessment tool](#)
- [Healthcare assistants and flu vaccinations](#)
- [Autumn COVID-19 booster and flu system letter \(england.nhs.uk\)](#)
- [Immunisation training standards for healthcare practitioners - GOV.UK \(www.gov.uk\)](#)
- [Immunisation training of healthcare support workers: national minimum standards and core curriculum - GOV.UK \(www.gov.uk\)](#)
- [Publications | Royal College of Nursing \(rcn.org.uk\)](#)
- [Immunisation Knowledge and Skills Competence Assessment Tool | Publications | Royal College of Nursing \(rcn.org.uk\)](#)
- [National flu and COVID-19 surveillance reports: 2021 to 2022 season - GOV.UK \(www.gov.uk\)](#)
- [Department of Health and Aged Care | Australian Influenza Surveillance Report and Activity Updates](#)
- [Weekly all-cause mortality surveillance: 2022 to 2023 - GOV.UK \(www.gov.uk\)](#)
- [Annual flu programme - GOV.UK \(www.gov.uk\)](#)
- [Influenza: the green book, chapter 19 - GOV.UK \(www.gov.uk\)](#)
- [National protocol for inactivated influenza vaccine - GOV.UK \(www.gov.uk\)](#)
- [NHS England » Seasonal influenza service specifications and collaboration agreement](#)
- [NHS England » Reimbursable vaccines and eligible cohorts for the 2022/23 NHS Seasonal Influenza \(flu\) Vaccination Programme](#)
- [NHS England » COVID-19 autumn booster and flu vaccine programme expansion](#)
- [Statement of amendments to annual flu letter – 21 July 2022 - GOV.UK \(www.gov.uk\)](#)
- [Flu vaccines: 2022 to 2023 flu season - GOV.UK \(www.gov.uk\)](#)
- [Flu vaccines for children and young people for 2022 to 2023 - GOV.UK \(www.gov.uk\)](#)
- [UK immunisation schedule: the green book, chapter 11 - GOV.UK \(www.gov.uk\)](#)
- [Written instruction for the administration of seasonal flu vaccination](#)
- [Flu vaccination programme information for the healthcare practitioners](#)
- [Fluenz Tetra \(with Subtitles\)](#)
- [Influenza vaccines marketed in the UK - GOV.UK \(www.gov.uk\)](#)
- [Vaccines and porcine gelatine - GOV.UK \(www.gov.uk\)](#)
- [Influenza vaccine and porcine gelatine: guidance for health professionals - GOV.UK \(www.gov.uk\)](#)
- [Vaccine update: issue 323, June 2021 - GOV.UK \(www.gov.uk\)](#)
- [Seasonal influenza vaccine uptake in GP patients: winter season 2021 to 2022 - GOV.UK \(www.gov.uk\)](#)
- [Leanne's story](#)
- [Flu can be fatal](#)

Continuation of Immunisation / Travel Health

Covid Vaccine	<ul style="list-style-type: none"> • Greenbook COVID-19 chapter 14a • COVID-19 Vaccine Moderna e-learning now available • GP COVID-19 vaccine dashboard • Updates made to the COVID-19 vaccination learning programme • COVID-19 vaccines (mims.co.uk) • Autumn COVID-19 booster and flu system letter (england.nhs.uk) • Higher-risk patients eligible for COVID-19 treatments: independent advisory group report - GOV.UK (www.gov.uk) • COVID booster available to over 65s (independentnurse.co.uk) • ‘Flimsy’ Covid booster needles will not disrupt Autumn rollout (cogora.com)
Children	<ul style="list-style-type: none"> • Encouraging uptake of the HPV vaccine: A guide for nurses (independentnurse.co.uk)
Adults	<ul style="list-style-type: none"> • Immunisation patient group direction (PGD) templates • Shingles immunisation programme: introduction of Shingrix® letter
Vaccine Update	<ul style="list-style-type: none"> • Vaccine update: issue 331, August 2022 - GOV.UK (www.gov.uk) • Vaccine update: issue 329, May 2022 - GOV.UK (www.gov.uk) • Vaccine update: issue 328, May 2022, Shingrix® special edition - GOV.UK (www.gov.uk) • Vaccine update: issue 327, May 2022, SCID, TB and BCG special edition (www.gov.uk) • Vaccine update: issue 326, April 2022, HPV special edition - GOV.UK (www.gov.uk) • Vaccine update: issue 325, April 2022, flu special edition - GOV.UK (www.gov.uk)
PGD	<ul style="list-style-type: none"> • Hib/MenC: patient group direction (PGD) template - GOV.UK (www.gov.uk)
Travel Health	<ul style="list-style-type: none"> • Travel Health Pro • Fit for Travel • Travel Health • Jane Chiodini • Corona.Help

Mental Health / Learning Disability / Disability	
Mental Health	<ul style="list-style-type: none"> • Mental Health • Mental Health UK • Mind • Place2b • Rethink Mental Illness • Young Minds • Every Mind Matters • Calm • Headspace • Better Health - Every Mind Matters - Resources • ZSA Training • NHS > Mental Health • Evaluating Project Future's work at Bruce Grove youth club • Barriers and Opportunities: Improving access to mental health support for refugees and people seeking asylum
Learning Disability	<ul style="list-style-type: none"> • Learning Disabilities • Learning Disability England • Mencap • Bild • Autism • PEOPLE FIRST: a response from health and care leaders to the urgent and emergency care system crisis • NHS England » Autistic people's healthcare information strategy for England
Disability (Inc. hearing and visual)	<ul style="list-style-type: none"> • Disability Rights UK • Disability Matters • RNID - National hearing loss charity • Spokzpeople
From Cradle to...	
Infant Health	<ul style="list-style-type: none"> • Tommys • First Steps Nutrition Trust • Bliss • ICON Toolkit • Routine childhood immunisation schedule (mkt6316.com)

Child Health	<ul style="list-style-type: none"> • Unicef • Health Professional Academy • Premature Babies • Child and Maternal Health • Women and Child First • Child Health Information Services • Place2b • Childhood eczema • Childhood asthma • Paediatrics for Primary Care (and anyone else) (gppaedstips.blogspot.com) • Home (phedigital.co.uk) • Managing food allergies in children and young people (independentnurse.co.uk) • Childhood Immunisations Child Health Academy (healthprofessionalacademy.co.uk) • Read the report (kingsfundmail.org.uk)
Adolescent Health	<ul style="list-style-type: none"> • Adolescent Health Programme • Society for Adolescent Health and Medicine • Young Minds
Mens Health	<ul style="list-style-type: none"> • Mens Health Forum • Mens Health Month • Mens health.org • Mens Health UK • Men and mental health • Men's Mental Health Awareness • Prostate Cancer UK • Orchid Fighting Male Cancer • Prostate Cancer UK Facebook Page • Movember

<p>Women's Health</p>	<ul style="list-style-type: none"> • Womens Health Concern • Well Being of Women • Coppa Feel • Menopause Matters • The Menopause Charity • Royal College of Obstetricians and Gynaecologists - Guidelines • Pelvic Partnership • CRUK - Womens Cancer • Breast Cancer Now • Foundation for Women's Cancer • Eve Appeal • Ovarian.Org • Jo's Trust • Well Spring • Know your Lemons • British Menopause Society - <u>www.thebms.org.uk</u> • NHS - <u>www.nhs.uk/conditions/menopause</u> • Henpicked - <u>henpicked.net</u> • The Menopause Exchange - <u>www.menopause-exchange.co.uk</u> • Women's Health Concerns - <u>www.womens-health-concern.org</u> • Menopause Matters - <u>www.menopausematters.co.uk</u> • The Daisy Network - <u>www.daisynetwork.org</u> • Dr Louise Newson's Menopause Doctor - <u>www.menopausedoctor.co.uk</u> • Manage My Menopause - <u>www.managemymenopause.co.uk/menopause-advice</u> • Menopause Support - <u>menopausesupport.co.uk</u> • The benefits and risks of HRT and how to communicate this to women (<u>independentnurse.co.uk</u>) • HRT Taskforce presents recommendations to support future supply - GOV.UK (<u>www.gov.uk</u>) • Ovarian Cancer Charity UK's Support Charity for Ovarian Cancer Ovacome
<p>The Older Population</p>	<ul style="list-style-type: none"> • BGS • Ageing Better • Delirium Champions - YouTube

Carers / Social Care / Care Homes	<ul style="list-style-type: none"> • The Care Provider Alliance • Skills for Care • The Care Workers' Charity • Supporting Adult Carers • Health and Social Care Secretary sets out plan for patients with new funding to bolster social care over winter - GOV.UK (www.gov.uk)
Young Carers	
Complex Needs	
Family Planning & Sexual Health	
Family Planning	<ul style="list-style-type: none"> • Faculty of Sexual and Reproductive Healthcare Education and Training • New MIMS table comparing levonorgestrel-releasing intrauterine systems
Reproductive	<ul style="list-style-type: none"> • Tommys
Sexual Health / Sexual Abuse	<ul style="list-style-type: none"> • Sexual and Reproductive Health Profiles • FSRH Education & Training
Maternity / Neonate health	

Care of Patients with Long Term Conditions	
LTC	<ul style="list-style-type: none"> • Physical Activity for the Prevention and Management of Long-Term Conditions
Diabetes & Pre-Diabetes	<ul style="list-style-type: none"> • Mumoactive • The mySugr App • PCDS Entry level module series - Foot Check • Type 2 diabetes in adults: management
Respiratory	<ul style="list-style-type: none"> • Spirometry: step by step • ARTP • British Lung Foundation • The Primary Care Respiratory Society • Respiratory – Respimat® patient resources Boehringer Ingelheim (boehringer-ingelheim.com) • Respiratory News & Advice (nursinginpractice.com) • Dudley pulmonary rehab - Template PI (dgft.nhs.uk)
COPD	<ul style="list-style-type: none"> • Right Breathe • GOLD COPD 2022 strategy Independent professional body guideline Guidelines
Asthma	<ul style="list-style-type: none"> • Asthma UK • Asthma: diagnosis, monitoring and chronic asthma management • Global Initiative for Asthma • British guideline on the diagnosis and pharmacological management of asthma in children
Hypertension	<ul style="list-style-type: none"> • British Heart Foundation • Blood Pressure UK • Hypertension in adults: diagnosis and management • Hypertension in adults: diagnosis and treatment • Hypertension: symptoms to look out for and treatment options (rcni.com)

Continuation of Long Term Conditions

CVD/AF	<ul style="list-style-type: none"> • QRISK®3-2018 risk calculator • Heart Rhythm Alliance • CVD risk assessment and management • NHS lipid management pathway NHS guideline Guidelines • Primary care cardiovascular disease prevention post-pandemic: a call to action (practicenursing.com)
Heart Failure	<ul style="list-style-type: none"> • British Heart Foundation • British Society Guidelines • Pharmacological management of chronic heart failure (rcni.com)
Cancer / Oncology	<ul style="list-style-type: none"> • Surviving Thyroid Cancer • Help Us Help You - Lung Cancer Symptoms • Breast Cancer Now • Macmillian • Bowel Cancer UK • Brain Trust • CRUK • Action Cancer • Foundation for Women's Cancer • NHS England » Cancer • Ovarian Cancer Charity UK's Support Charity for Ovarian Cancer Ovacome • Pain management within pancreatic cancer - Pancreatic Cancer UK • Bowel cancer screening extended to patients aged 58 - Nursing in Practice • Cancer screening: the urgent shouldn't crowd out the important The King's Fund (kingsfund.org.uk) • Practice Nursing - How practice nurses could raise awareness of ovarian cancer
Chronic Kidney Disease	<ul style="list-style-type: none"> • Kidney.Org • Kidney Quality Improvement Partnership

Continuation of Long Term Conditions




Liver Disease	<ul style="list-style-type: none"> • British Liver Trust • Liver Research • BRITISH ASSOCIATION FOR THE STUDY OF THE LIVER • LIVERnORTH • LIVER DISEASE AND CIRRHOSIS • Non-alcoholic fatty liver disease: a global concern (practicenursing.com)
Blood Disorders	<ul style="list-style-type: none"> • Blood Cancer UK • UK Thalassaemia Society • The ITP Support Association • UK-ITP Paediatric ITP Registry • The Haemophilia Society • UK MDS Forum • Pernicious Anaemia Society • Haemochromatosis UK
G.I	<ul style="list-style-type: none"> • GIST Cancer UK • Pernicious Anaemia Society • PPI use inappropriate in over half of cases, study suggests MIMS online (mkt6316.com)
ENT	
G.U	
ME / CFS / Fibromyalgia	<ul style="list-style-type: none"> • ME Association • ME Research • Action for M.E • Fibromyalgia Action UK • Fibromyalgia UK • Home - Fibromyalgia Awareness UK (fibroawarenessuk.org) • Fibromyalgia - Symptoms, diagnosis and treatment BMJ Best Practice • Fibromyalgia - The Brain Charity

Continuation of Long Term Conditions

Neurological Conditions	<ul style="list-style-type: none"> • The Brain Tumour Charity • Narcolepsy.Org • ACNR • MS Society UK Information, research and support Multiple Sclerosis Society UK • Home MS Trust • Epilepsy Society • Three-minute skin swab can diagnose Parkinson's - Nursing in Practice
Musculoskeletal Conditions	<ul style="list-style-type: none"> • Rheumatology • National Axial Spondyloarthritis Society • Musculoskeletal health • Musculoskeletal health: 5 year prevention strategic framework • Faculty of Occupational Medicine • Guide to embedding your first contact physiotherapy service
Endocrine Disorders / Metabolic Disorders	<ul style="list-style-type: none"> • Society for Endocrinology • Turner Syndrome Support Society • Thyroid Eye Disease • British Thyroid Foundation • Thyroid UK • The Pituitary Foundation • Addisons Disease • Parathyroid UK • The Royal Osteoporosis Society • Metabolic Support UK
Frailty	<ul style="list-style-type: none"> • Recognising frailty • Identifying frailty • CLINICAL FRAILTY SCALE • Practice Nursing - Dysphagia in the older person: an update • Practice Nursing - Preventing skin tears among older adults in general practice • Assessment of frailty in Alzheimer's: a literature review
Dementia / Alzheimers	<ul style="list-style-type: none"> • Dementia UK • Age UK - Understanding Dementia • Delirium Champions • Alzheimers Society • Dementia profile updates - GOV.UK (www.gov.uk)

Continuation of Long Term Conditions

Dermatology	<ul style="list-style-type: none"> • British Association of Dermatologists • Eczema • The British Skin Foundation • Acne vulgaris: management • The Primary Care Dermatology Society • Acne.org • Allergy UK • Urticaria • Hives • Sunburn • Causes of cancer and reducing your risk • What is Rosacea? • Rosecea • The Rosacea Forum • Herpes Viruses Association • Shingles • Fungal Skin Infection - Foot • The Psoriasis Association • National Psoriasis Foundation • Melanoma • Skin Health Information • British Association of Plastic Reconstructive and Aesthetic Surgeons - Procedure Guides • Warts and verrucae • Psoriasis diagnoses in primary care delayed by up to five years, study shows (cogora.com) • How to reduce the risk of skin cancer by NICE Talks (soundcloud.com) • Understanding hidradenitis suppurativa • Skin cancer: getting back to basics (practicenursing.com) may need a sign in
Allergy / Auto-immune / Genetic Conditions	<ul style="list-style-type: none"> • Allergy UK • British Society for Rheumatology • Addisons Disease • Understanding autoimmune diseases: part 2 (practicenursing.com)

<i>Continuation of Long Term Conditions</i>	
Obesity	<ul style="list-style-type: none"> • Obesity UK • Adipose in Candyland: Diet and exercise in a pill (independentnurse.co.uk)
Pain Management	<ul style="list-style-type: none"> • Pain Concern
Genomics	
Multi-Morbidity	<ul style="list-style-type: none"> • Multimorbidity • Multimorbidity / multiple long-term conditions (MLTC)
Minor Illness / First Contact Assessment / OSCE	<ul style="list-style-type: none"> • Fact Sheets - Self Care Forum • OSCE Checklists  (mlsend.com) • OSCE Flashcards  (mlsend.com) • 600+ OSCE Stations ✨ (mlsend.com) • Anatomy Flashcards  (mlsend.com)
Other / Case Studies	
End of Life Care	
End of Life Care	<ul style="list-style-type: none"> • ReSPECT for healthcare professionals • Hospice UK • Managing symptoms at the end of life: a guide for non-palliative care nurses (rcni.com)

Flu / Covid-19 / Monkeypox	
Covid-19	<ul style="list-style-type: none"> • Covid Live • Massive global failures in COVID response (independentnurse.co.uk) • Coronavirus (COVID-19) vaccination uptake in school pupils, England: up to July 2022 (www.gov.uk) • Coronavirus (COVID-19) Infection Survey, UK: 23 September 2022 (www.gov.uk) • Coronavirus (COVID-19) Infection Survey, characteristics of people testing positive for COVID-19, UK: 21 September 2022 (www.gov.uk)
Long Covid	<ul style="list-style-type: none"> • Supporting your recovery after COVID-19 • Long Covid Toolkit • Long term effects of COVID (Long COVID) • Post-COVID Syndrome (Long COVID) • COVID-19 Yorkshire Rehabilitation Screening Tool • FOM Guidance • Exercise and breathing in rehabilitating long COVID (practicenursing.com) – may need a sign in
Flu / Avian Flu	<ul style="list-style-type: none"> • Avian influenza in wild birds (www.gov.uk) • Avian influenza (bird flu) in Europe, Russia and the UK (www.gov.uk) • National flu and COVID-19 surveillance reports: 2022 to 2023 season - GOV.UK (www.gov.uk)
Monkeypox	<ul style="list-style-type: none"> • Monkeypox: guidance - GOV.UK (www.gov.uk) • Monkeypox outbreak: JCVI statement on vaccine dose prioritisation, September 2022 - GOV.UK (www.gov.uk) • Monkeypox outbreak: technical briefings - GOV.UK (www.gov.uk) • Monkeypox outbreak: epidemiological overview - GOV.UK (www.gov.uk)

News & Views

<p>Digital News / Remote Consultations</p>	<ul style="list-style-type: none"> • Digital Health News Webinars • Digital Health News • NHS Digital • DigiHealthWell • Public Sector Events, Conferences and Training - Inside Government • Digital Transformation • Your daily news updates from Digital Health (campaign-archive.com) • Digital Health Networks Newsletter: 26 September 2022 (mailchi.mp) • Your daily news updates from Digital Health (campaign-archive.com) • Digital Health Digest - 23 September 2022 (mailchi.mp)
<p>PSNC News / Pharmacy</p>	<ul style="list-style-type: none"> • National Pharmacy Association • Royal Pharmaceutical Society • Medicines Learning Portal • Specialist Pharmacy Service • PSNC Newsletter: 26th September • PSNC Newsletter: 23rd September (mailchi.mp)
<p>Pulse / GP Online / HSJ / NB Medical</p>	<ul style="list-style-type: none"> • GP Online • HSJ • Pulse Today
<p>Primary Care Update / PCC / PPP</p>	<ul style="list-style-type: none"> • Public Policy Projects News • Primary Care Bulletin
<p>Health Care Leaders Newsletters</p>	

Continuation of News & Views

Kings Fund	<ul style="list-style-type: none"> • The Kings Fund • Teenagers' drug and cigarette use declines as vaping gains popularity – figures, Independent, 7 September 2022 • ADPH highlights link between gambling and suicide, Association of Directors of Public Health, 8 September 2022 • Post-menopause HRT treatment to be sold over the counter in UK, BBC News, 8 September 2022 • NHS trusts seek to open 'warm banks' as energy crisis hits patients, Independent, 12 September 2022 • Liz Truss could scrap anti-obesity strategy in drive to cut red tape, The Guardian, 13 September 2022 • Why gender is at the heart of the matter for cardiac illness, The Observer, 18 September 2022 • Nature-based physical activity as an early intervention for teenagers, Nursing Times, 20 September 2022 • NHS doctors warn 16 million people could be left without a local GP within a decade, iNews, 21 September 2022 • Millions in poor health due to lack of rehab after illness, warns UK report, The Guardian, 21 September 2022
World Health Organisation	<ul style="list-style-type: none"> • WHO • OpenWHO
IHCT / CCG / STP / Healthier Futures	<ul style="list-style-type: none"> • Black Country & West Birmingham CCG • Dudley Integrated Health and Care • Home :: Black Country Healthcare NHS Foundation Trust • Issue 11 - Black Country Primary Care Brief (sharepoint.com) • Issue 10 - Black Country Primary Care Brief (sharepoint.com) • Issue 09 - Black Country primary Care Brief (sharepoint.com)
NHSI / NHSE	
University / Student Nurses	
Medisa / Univadis / Geeky Medics / GP Notebook / Medscape	<ul style="list-style-type: none"> • Medisa • Geeky Medics • Medscape Nurses • GP Notebook
Nurse Guidelines	
The Health Foundation	<ul style="list-style-type: none"> • The Health Foundation • New analysis: Building an organisational culture of continuous improvement (healthfdn.org.uk)
The Health Care Leaders Update	<ul style="list-style-type: none"> • Health Care Leader News

<i>Continuation of News & Views</i>	
Practice Index	
Innovation Agency	<ul style="list-style-type: none"> • Innovation Agency Exchange
RCN	<ul style="list-style-type: none"> • RCN • Plan for patients lacking, says RCN (independentnurse.co.uk)
Nursing in Practice / Nursing Standard / Independent Nurse	<ul style="list-style-type: none"> • Nursing Times • Practice Nursing - Explore our brand new website • Journal of General Practice Nursing
QNI	<ul style="list-style-type: none"> • QNI • Talk To Us © – The Queen's Nursing Institute (qni.org.uk)
NMC	<ul style="list-style-type: none"> • NMC • The GMC's and NMC's positions on industrial action NHS Employers • NMC to consider making nursing language requirements more flexible - Nursing in PracticeNursing in Practice (cogora.com)
CMO / CNO	
Nice	<ul style="list-style-type: none"> • NICE
RCGP / BMA / The Lancet	<ul style="list-style-type: none"> • The Lancet • British Medical Journal • Royal College of General Practitioners
Midlands Academic Health Science Network	<ul style="list-style-type: none"> • WMAHSN Network
Healthwatch	<ul style="list-style-type: none"> • Healthwatch
Other	<ul style="list-style-type: none"> • Patients Association

Free Training / Webinars / Meetings / CPD

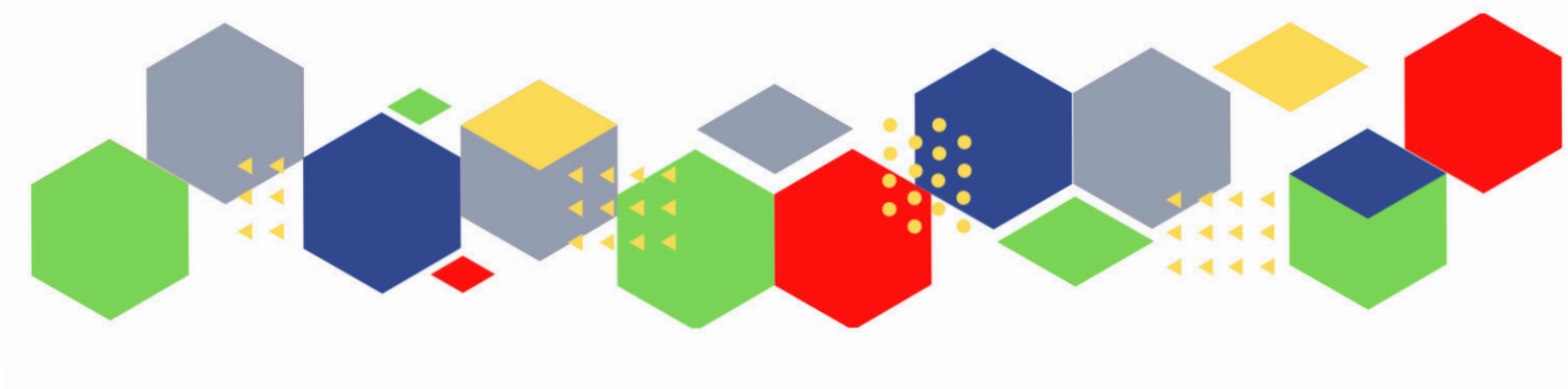
<p>Development / Information and Knowledge</p>	<ul style="list-style-type: none"> • Red Whale Training • Issues & Answers • Issues & Answers - Long Covid Broadcasts • How are local partners integrating care for older people? (kingsfundmail.org.uk) • Thank-you for your interest in our recent webinar on Video Group Clinics. We have some webinars coming up that you might be interested in: • Tuesday 11th October, 12:30-13:45, Building capacity, resilience & retention via digital care - https://www.eventbrite.co.uk/e/200942433227 • Wednesday 16th November, 12:30-13:30, Adapting clinical practice to consult in group clinics - https://www.eventbrite.co.uk/e/250247114857
<p>Free to RCN</p>	<ul style="list-style-type: none"> • RCNi events RCNi • 4 Oct - RCN South Birmingham Learning Event: Overcoming hidden disabilities and being a BAME ally • 12 Oct - RCN Birmingham East, North and Solihull Learning Event: Experience of working as BAME nurse in the NHS • 19 Oct - RCN North Staffordshire Learning Event - two workshop sessions • 19 Oct - RCN Birmingham East, North and Solihull branch meeting

Continuation of Free Training / Webinars / Meetings / CPD

MIMMs Learning	
Eventbrite	
e-Learning for Health	
Podcasts	<ul style="list-style-type: none"> • The Nursing Handover Podcast • Nursing Standard Podcasts • Nursing Matters • Welcome to the BJN Podcast • Cygnet Health Care Podcast • EBN podcast • This Is Nursing • Teach me, I'm a Nurse • Past Caring • RCGP eLearning podcast • The BMJ Podcast • Primary Care Network podcasts • The Professional Support Unit's Pandemic Podcast • The Next GenCast
Future Proof Health Training	<ul style="list-style-type: none"> • Training
YouTube	<ul style="list-style-type: none"> • NHS England • Black Country Healthcare - YouTube
Blogs/Vlogs	<ul style="list-style-type: none"> • Acting on the evidence: ensuring the NHS meets the needs of trans people The King's Fund (kingsfund.org.uk)

Continuation of Free Training / Webinars / Meetings / CPD

BCWB Training Hub	
Evidence based care	
Area Bulletins	
Research	<ul style="list-style-type: none">• Science Daily• Multimorbidity / multiple long-term conditions (MLTC)• National Institute for Health and Care Research• Knowledge Exchange Framework advances following positive feedback – UKRI• Research Roundup (practicenursing.com) – may need a log in
Freebies	<ul style="list-style-type: none">• Blue Light Card
Other	



Thank you for reading Future Proof Health's weekly news!

If you missed past issues, please click [here](#) to view them

More information can be found on our website, [here](#)

Don't forget to like us on [Facebook](#) & Follow us on [Twitter](#)

