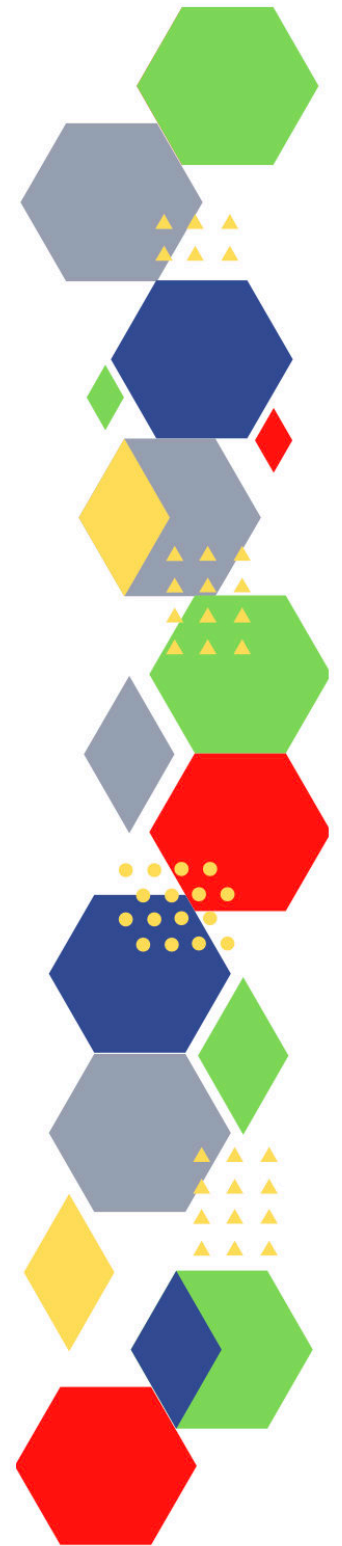




Future Proof Health Presents

Weekly News

15th December 2022



Communication	
Communication with Patients	<ul style="list-style-type: none"> • Resources and guidance are also available to help practices communicate with patients (cmail20.com) • Benefits of Effective Communication in Nursing Communication Skills 1 Nursing Times • 11 Barriers To Communication In Health Care - Nurse In Nursing • Communication in the NHS - why is it so important? — Infinity Health • Good communications with patients: core principles • NHS England » Improving communication between health care professionals and patients in the NHS in England • NHS England » Spoken communication and patient safety in the NHS
Communication within Teams	<ul style="list-style-type: none"> • 5 Ways How to Communicate with Stakeholders Effectively (swiftdigital.com.au) • NHS England » The NHS Engagement and Communications Development Programme • NHS England » Communications toolkit
Consent / Advocacy / IMCA	<ul style="list-style-type: none"> • Gillick competency and Fraser guidelines • ReSPECT for healthcare professionals • Overview Advocacy services for adults with health and social care needs Guidance NICE • Fraser guidelines - General Practice notebook (bing.com) • Gillick Competence and the Fraser Guidelines – Mental Capacity Ltd (mental-capacity.co.uk) • Gillick Competence and Fraser Guidelines – Guide and Resources 2022 update - Safeguarding Hub • What You Need To Know About Gillick Competence And Fraser Guidelines - The Medic Portal • Children and young people ethics toolkit (bma.org.uk) • Mental Capacity Act - NHS (www.nhs.uk) • The Mental Capacity Act (2005) – Mental Capacity Ltd (mental-capacity.co.uk) • Mental Capacity Act Code of Practice - GOV.UK (www.gov.uk) • Mental Capacity Assessment Tool Guidance • Overview Decision-making and mental capacity Guidance NICE • Mental Capacity Act 2005 - The 5 principles (scie.org.uk) • Mental Capacity Act 2005 - legal information - Mind • Mental Health Act (easy read) - NHS (www.nhs.uk) • Independent Mental Capacity Advocate (IMCA) SCIE • Independent Mental Capacity Advocates (IMCA) - Mind • IMCA: Template report for the best interests assessment SCIE • Care Act factsheets - GOV.UK (www.gov.uk)

People and Personal Development	
Personal / People Development / Leadership	<ul style="list-style-type: none"> • Accountability and delegation in practice
NHS Employers / HR / NHS Pension	<ul style="list-style-type: none"> • NHS Employers • Pensions Online • NHS Pension Scheme: proposed amendments to scheme regulations - GOV.UK (outlook.com)
Health, Safety & Security	
	<ul style="list-style-type: none"> • NPSA • Control of Substances Hazardous to Health (COSHH) • Weekly Digest Newsletter: 1 December 2022 (govdelivery.com)
Gov UK - NHS	
CQC	<ul style="list-style-type: none"> • GP mythbusters • CQC update for adult social care providers (govdelivery.com)
MIMS	<ul style="list-style-type: none"> • Prescribing Update • Free CPD module on MIMS Learning covers invasive group A streptococcus diagnosis and prescribing
Health Protection Review	
Emergency Situations	<ul style="list-style-type: none"> • Resuscitation Council UK
Drug / Device Alerts (MHRA)	<ul style="list-style-type: none"> • Drug Safety Update (mhradrugsafety.org.uk)
Vaccines / Medications / Prescribing	<ul style="list-style-type: none"> • Protocol for ordering, storing and handling vaccines • A Competency Framework for all Prescribers • Non-medical prescribing • The Human Medicines Regulations 2012 • RCN - Non-medical prescribers • Royal Pharmaceutical Society • Standards for prescribing • Clinical Negligence Scheme for General Practice • Home - electronic medicines compendium (emc) • Drug shortages - live tracker MIMS online • Developing a support pathway for non-medical prescribers in primary care (cogora.com) • Rising drug shortages add to pressure on GPs and pharmacists (mims.co.uk) • Government denies antibiotic shortage despite warnings from GPs and suppliers (mims.co.uk) • Antidepressants, a guide to switching and withdrawing (mims.co.uk)

Antibiotic steward-ship / Anti-microbial resistance	<ul style="list-style-type: none"> • ESPAUR report 2022 - the latest findings on Antimicrobial Resistance - UK Health Security Agency (blog.gov.uk) • Raising awareness about AMR: toolkits for healthcare professionals - UK Health Security Agency (blog.gov.uk) • Consultation launched to combat antimicrobial resistance
Infection Control / Infection Statics	<ul style="list-style-type: none"> • NHS England » National infection prevention and control • Infection Prevention & Control Champions Network and Me (qni.org.uk)
Safe Guarding	<ul style="list-style-type: none"> • Female genital mutilation (FGM) • PREVENT • Child protection system in the UK • Safeguarding Adults • Safeguarding children: detailed information • Domestic abuse victim services, England and Wales: 2022 (www.gov.uk) • Dudley Financial Abuse Alliance - September 2022 (govdelivery.com) • Wolverhampton Safeguarding Together - Training Update November 2022 • Wolverhampton - Training Update December 2022 (govdelivery.com)
Practice Policies: Practice Management / Accountability Duty of Candour	<ul style="list-style-type: none"> • Speaking up: challenging microaggressions in the workplace (outlook.com)
Audit	
Information Governance / Record Keeping	<ul style="list-style-type: none"> • Guide to Data Protection • Supporting general practice – Medical record keeping • Update from NHS England on Accelerating Citizen Access to GP Data, 29 November 2022 - NHS Digital • NHS England » Directly bookable appointments – guidance for practices • NHS England » Offering patients access to their new (prospective) health information • NHS England » Offering patients access to their new (prospective) health information

Quality & Service Improvement	
Quality, Service & Improvement	<ul style="list-style-type: none"> • The PRSB • General Practice Assessment Questionnaire (GPAQ) • Healthwatch • NHS Five Year Forward View • General Practice Forward View • NMC • Dr Jon Griffiths Blog • NHS Confed
Roles in General Practice Including AHP	<ul style="list-style-type: none"> • Standards for nursing associates • GP mythbuster 57: Health Care Assistants in General Practice • NHS England » Allied Health Professions • Innovations in social prescribing: the role of housing (kingsfundmail.org.uk)
Revalidation	
Personal Practice & Development	
Practice Management	<ul style="list-style-type: none"> • Institute of General Practice Management • Practice Index • Top Tips: Human Resource Management in General Practice (medscape.com) • Speaking up: challenging microaggressions in the workplace (kingsfundmail.org.uk)
EMIS / System One	
Recruitment Employment / Retirement / Legacy Nursing	
NHS Self Care & Resilience	<ul style="list-style-type: none"> • Samaritans • Mental Health at work • Calm • Supporting our NHS people • The Hub :: Black Country Healthcare NHS Foundation Trust • Practitioner Health Mental Wellbeing App • Speaking up: challenging microaggressions in the workplace (kingsfundmail.org.uk) • 18 January 2023, 2pm – 3pm. January's Wellbeing Wednesday Community Event • £1.97 million awarded to support women in the workplace - GOV.UK (www.gov.uk)

<p>Practice Transformation / Innovation Agency</p>	<ul style="list-style-type: none"> • Health and Care Act 2022: combined impact assessments - GOV.UK (www.gov.uk) • collaborative practice webinar (createsend1.com) • Patients in England at risk as NHS and care 'gridlocked', (kingsfundmail.org.uk) • General practices to have direct access to tests to speed up cancer diagnosis (independentnurse.co.uk) • Innovations in social prescribing: the role of housing (kingsfundmail.org.uk) • Register with a GP surgery service - NHS Digital (createsend1.com) • 'Find a GP' (createsend1.com) • NHS Digital Research (createsend1.com)
<p>Future of NHS / General Practice / NHS Recovery</p>	<ul style="list-style-type: none"> • NHS England • NHS England » Primary care • NHS mandate 2022 to 2023 • Staff Shortages and Overwork Are Taking a Toll on Primary Care (medscape.com) • Autumn statement 2022 • The value of partnership working (kingsfundmail.org.uk) • Strategies to reduce waiting times for elective care • Conversations around general practice need to be about more than just access
<p>NHS Resolution</p>	<ul style="list-style-type: none"> • NHS Resolution Newsletter (cmail19.com)
<p>ICS / ICB / ICP / PCN Commissioning</p>	<ul style="list-style-type: none"> • ICS • Primary Care Networks • GP • The first days of statutory integrated care systems: born into a storm (kingsfundmail.org.uk) • Health and wellbeing boards (kingsfundmail.org.uk) • Hewitt review: terms of reference - GOV.UK (www.gov.uk)
<p>QOF / PHOF / DES / LES / NHS Contract / CQRS / CQUIN</p>	<ul style="list-style-type: none"> • NHS Payments to General Practice, England 2021/22 - NDRS (digital.nhs.uk)
<p>Leadership / Innovation</p>	<ul style="list-style-type: none"> • Leadership Academy • Speaking up: challenging microaggressions in the workplace (kingsfundmail.org.uk) • Personal impact and influence programme (kingsfundmail.org.uk)
<p>Greener NHS</p>	<ul style="list-style-type: none"> • Greener Allied Health Professional hub (england.nhs.uk)

Personalised Care	
Personalised Care / Self Care / Social Prescribing / Health Coaching	<ul style="list-style-type: none"> • Self Care forum • Personalised Care Institute • Personalised care • Social Prescribing Academy • 11 January 2023 1pm – 2.30pm. More Than an Art Group: The Relationship Between Creative Health and Social Prescribing
Group consultation	
Working Differently	
Shared Decision Making	<ul style="list-style-type: none"> • Personalised Care Institute
Equality & Diversity	
Equality & Diversity	<ul style="list-style-type: none"> • Public Health Profiles • Health equity and the UK Health Security Agency - UK Health Security Agency (blog.gov.uk)
Inclusion Health	<ul style="list-style-type: none"> • Health Creation Academic Network • Inequality on the inside
Poverty / Homelessness	<ul style="list-style-type: none"> • Crisis • This is Poverty • Poorer women in UK have sixth-highest cancer death rates in Europe, WHO finds (kingsfundmail.org.uk) • The cost-of-living crisis: is the nation's health paying the price? (kingsfundmail.org.uk) • I'm a public health doctor – I know austerity is why people are struggling (kingsfundmail.org.uk) • Severely ill refusing sicknotes as they cannot afford time off, says GPs' head (kingsfundmail.org.uk)
Population Health / Health Communities	<ul style="list-style-type: none"> • Population health in action: a Primary Care Network approach to health inequalities (kingsfundmail.org.uk) • 18 January 2023, 10am– 11am. An introduction to working with people and communities • Individual and community well-being, Great Britain: October 2022 - GOV.UK (outlook.com)
Thrive Into Work	<ul style="list-style-type: none"> • Thrive into Work • Thrive into Work Referral form
Health Inequalities	<ul style="list-style-type: none"> • NHS News • Sugar reduction – industry progress 2015 to 2020 • Office for Health Improvement and Disparities - Ethnic inequalities and the elective backlog: what needs to be done? (kingsfundmail.org.uk)

Trans / Non-binary Health / LGBTQ+	<ul style="list-style-type: none"> • LGBT Foundation • Surgery staff grab sheet (squarespace.com) • Trans inclusive organisations — TransActual • TransActual - Healthcare • CliniQ
Migrant / Refugee Health	<ul style="list-style-type: none"> • THE REFUGEE & MIGRANT CENTRE
Traveller / Gypsy / Romany Health	<ul style="list-style-type: none"> • Gypsy Roma and Traveller History and Culture The Traveller Movement • Friends, Families and Travellers (gypsy-traveller.org) • Gypsies and Travellers in England and Wales: lived experiences - GOV.UK (outlook.com)
Veterans Health	<ul style="list-style-type: none"> • The first call for help takes courage
Voluntary / Charity	
Management of Emergency Situations	
Management of Emergency Situations	
111 / Emergency Care	<ul style="list-style-type: none"> • Ambulance Services Will Be 'Incredibly Stretched' During Strike, Says NHS Chief (medscape.com) • National ambulance syndromic surveillance: weekly bulletins 2022 (outlook.com) • #EM3: East Midlands Emergency Medicine Educational Media
First Contact	<ul style="list-style-type: none"> • Supporting general practice – Common pitfalls • Paediatrics for Primary Care (and anyone else) (gppaedstips.blogspot.com)
Red Flags	<ul style="list-style-type: none"> • #EM3: East Midlands Emergency Medicine Educational Media
Sepsis	<ul style="list-style-type: none"> • Sepsis: recognition, diagnosis and early management • Sepsis guidance implementation advice for adults • Sepsis in Children • Sepsis Trust • quick SEPSIS RELATED ORGAN FAILURE ASSESSMENT
Therapeutic Monitoring	
OSCE	<ul style="list-style-type: none"> • Geeky Medics • Abdominal Examination - Demonstration - YouTube • Cardiovascular Examination - Demonstration - YouTube • Respiratory Examination - Demonstration - YouTube • Physical Diagnosis Skills - University of Washington School of Medicine

Role Specific	
Cervical Cytology	<ul style="list-style-type: none"> • Guide to the interim assessment • British Association for Cytopathology • Lab Tests Online
Ear Care	<ul style="list-style-type: none"> • Ear Care Centre • RNID
Wound Management / Compression	<ul style="list-style-type: none"> • Microworld • Tissue Viability Society • The BLS • New material could promote wound healing for diabetes patients • Booking: Wound Care Today March 2023 - Wound Care Today (woundcare-today.com) • You are invited to attend the 16th National Wound Conference (mahealthcarevents.co.uk) • Wounds Week 5 continues today! (mahealthcarevents.co.uk) • You are invited to attend the 10th Annual National Lymphoedema Conference (mahealthcarevents.co.uk)
Minor Surgery	
Obtaining Samples / Results	<ul style="list-style-type: none"> • Lab Tests Online
Health Promotion / Health Screening	
Health Promotion / Population Health	<ul style="list-style-type: none"> • Better Health • SHAPE Strategic Health Asset Planning and Evaluation (shapeatlas.net) • Population health in action: a Primary Care Network approach to health inequalities (kingsfundmail.org.uk) • I'm a public health doctor – I know austerity is why people are struggling (kingsfundmail.org.uk) • Our country is getting sicker (bma-mail.org.uk) • Individual and community well-being, Great Britain: October 2022 (outlook.com)
Health Screening	<ul style="list-style-type: none"> • PHE Screening
PHE / OHID / UKHSA	<ul style="list-style-type: none"> • Knowledge & Library Services • Campaign Resources • Public Health Profiles • Health Publications • Health Profile for England 2021 • English indices of deprivation 2019 • Government to use 'Vaccine Taskforce' model for public health research (cogora.com) • Achieving a step change in the health protection response to climate change - UK Health Security Agency (blog.gov.uk)

NHS Health Check	<ul style="list-style-type: none"> • NHS Health Check • NHS Health Check quarterly statistics: July to September 2022 offers and uptake (outlook.com)
UK GOV Flu / Covid / Bird Flu	<ul style="list-style-type: none"> • Coronavirus (Covid-19) infection survey, UK: 2 December 2022, Office for National Statistics, 2 December 2022 (outlook.com) • National flu and Covid-19 surveillance report: 1 December 2022 (week 48), UK Health Security Agency, 1 December 2022 (outlook.com) • Daily testing of contacts of COVID-19 cases: evaluation - GOV.UK (outlook.com) • Lateral flow device (LFD) performance data (outlook.com) • National flu and COVID-19 surveillance reports: 2022 to 2023 season (outlook.com) • Coronavirus (COVID-19) Infection Survey, Northern Ireland weekly report 9 December 2022 (outlook.com) • Coronavirus (COVID-19) Infection Survey, UK: 9 December 2022 (outlook.com) • Consensus statements and medium-term projections on COVID-19 (outlook.com) • Bird flu (avian influenza): cases in wild birds - GOV.UK (outlook.com)
UK GOV - General Practice	<ul style="list-style-type: none"> • Community service statistics, September 2022, (outlook.com) • National general practice profiles, December 2022 update, (outlook.com) • GP in hours: weekly bulletins for 2022 (outlook.com) • GP out-of-hours syndromic surveillance: weekly bulletins for 2022 (outlook.com) • Trends in staff-to-patient numbers at GP practices in England: 2022 (outlook.com) • National General Practice Profiles: December 2022 update (outlook.com)
UK GOV - Secondary Care	<ul style="list-style-type: none"> • Provisional Monthly Hospital Episode Statistics for Admitted Patient Care, Outpatient and Accident and Emergency data, April 2022 – October 2022 (outlook.com) • Diagnostic waiting times and activity for October 2022 (outlook.com)
UK GOV Deaths / Suicide / Palliative Care / Mortality / End of Life	<ul style="list-style-type: none"> • Remote health advice: weekly bulletins for 2022 (outlook.com) • Weekly all-cause mortality surveillance: 2022 to 2023 (outlook.com) • Summary Hospital-level Mortality Indicator (SHMI), Deaths associated with hospitalisation, England, August 2021-July 2022 (outlook.com) • Excess winter mortality in England and Wales: 2021 to 2022 (provisional) and 2020 to 2021 (final) - GOV.UK (outlook.com)
UK GOV - LTC	<ul style="list-style-type: none"> • Cancer service profiles, 2022 annual update, (outlook.com) • Rapid cancer registration data (outlook.com) • Obesity profile, December 2022 update (outlook.com) • Cancer Services Profiles, 2022 annual update - GOV.UK (outlook.com) • Obesity Profile: December 2022 update - GOV.UK (outlook.com) • Waiting times for suspected and diagnosed cancer patients for October 2022 - GOV.UK (outlook.com)
Surveillance / Syndromic Surveillance	<ul style="list-style-type: none"> • Syndromic surveillance: systems and analyses - GOV.UK (www.gov.uk)

<p>Ambulance / Remote Health / 111 / Urgent Care / A&E</p>	<ul style="list-style-type: none"> • Remote health advice: weekly bulletins for 2022 (outlook.com) • Emergency department: weekly bulletins for 2022 (outlook.com) • NHS 111 / Integrated Urgent Care Patient experience survey for April 2022 to September 2022 (outlook.com) • Ambulance Quality Indicators Systems Indicators for November 2022 (outlook.com) • Integrated Urgent Care Aggregate Data Collection (IUC ADC) – for November 2022 (Provisional statistics) (outlook.com) • Ambulance Quality Indicators Clinical Outcomes for July 2022 (outlook.com) • Integrated Urgent Care Aggregate Data Collection (IUC ADC) for October 2022 (Official statistics) (outlook.com) • A&E attendances and emergency admissions for November 2022 - GOV.UK (outlook.com) • Provisional Accident and Emergency Quality Indicators for England, October 2022, by provider - GOV.UK (outlook.com)
<p>UK GOV Infectious Disease Monitoring / NOIDS</p>	<ul style="list-style-type: none"> • HIV testing, PrEP, new HIV diagnoses, and care outcomes for people accessing HIV services: 2022 report (outlook.com) • Klebsiella species bacteraemia: monthly data by location of onset (outlook.com) • MRSA bacteraemia: monthly data by location of onset (outlook.com) • P. aeruginosa bacteraemia: monthly data by location of onset (outlook.com) • C. difficile infection: monthly data by prior trust exposure (outlook.com) • E. coli bacteraemia: monthly data by location of onset (outlook.com) • MSSA bacteraemia: monthly data by location of onset - GOV.UK (outlook.com) • National norovirus and rotavirus surveillance reports: 2022 to 2023 season (outlook.com) • Group A streptococcal infections: activity during the 2022 to 2023 season - GOV.UK (outlook.com) • Travel-associated infections (outlook.com) • Monkeypox outbreak: epidemiological overview (outlook.com) • Diphtheria: cases among asylum seekers in England, 2022 (outlook.com) • Measles, mumps and rubella: lab-confirmed cases in England 2022 (outlook.com) • Notifiable diseases: causative agents reports for 2022 - GOV.UK (outlook.com) • Notifiable diseases: last 52 weeks - GOV.UK (outlook.com) • Notifiable diseases: weekly reports for 2022 (outlook.com)
<p>UK GOV - Mental Health / Learning Difficulties</p>	<ul style="list-style-type: none"> • Community Services Statistics for Children, Young People and Adults, September 2022 - GOV.UK (outlook.com) • Out of Area Placements in Mental Health Services, September 2022 (outlook.com) • Psychological Therapies: reports on the use of IAPT services, England, September 2022 Final including a report on the IAPT Employment Advisers pilot (outlook.com) • Autism Statistics, October 2021 to September 2022 - GOV.UK (outlook.com) • Health and Care of People with Learning Disabilities, Experimental Statistics 2021 to 2022 - GOV.UK (outlook.com) • Mental Health Services Monthly Statistics, Performance September, Provisional October 2022 - GOV.UK (outlook.com)
<p>Addiction/Smoking</p>	<ul style="list-style-type: none"> • Drink Coach • Stop smoking interventions and services • Big rise in gambling addictions putting suicidal young men in hospital (kingsfundmail.org.uk) • Adult smoking habits in the UK: 2021 (outlook.com) • Local tobacco control profiles for England, (outlook.com) • Alcohol-specific deaths in the UK: registered in 2021 (outlook.com)

Immunisation / Travel Health

- [Joint Committee on Vaccination and Immunisation](#)
- [Immunisation against infectious disease](#)
- [West Midlands Immunisation Service](#)
- [Vaccination of individuals with uncertain or incomplete immunisation status](#)
- [Immunisation Queries: Immunisation information for Health Care Services within the West Midlands area](#)
- [Immunisation](#)

Flu	<ul style="list-style-type: none"> • Flu and flu vaccinations • The national influenza immunisation programme 2021 to 2022 • Flu vaccines for the 2021 to 2022 season poster • Appendix C: Flu vaccinator competency assessment tool • Healthcare assistants and flu vaccinations • New vaccine marketing campaign urges millions to boost their immunity this winter • NHS England » Parents of under-fives and pregnant women reminded of flu eligibility as hospitalisations rise
Covid Vaccine	<ul style="list-style-type: none"> • Greenbook COVID-19 chapter 14a • COVID-19 Vaccine Moderna e-learning now available • GP COVID-19 vaccine dashboard • Updates made to the COVID-19 vaccination learning programme • Covid-19 vaccine surveillance report: 1 December 2022 (week 48), UK Health Security Agency, 1 December 2022 (outlook.com) • Guidance on NHS App features - NHS Digital • Coronavirus and vaccination rates in people aged 18 years and over by socio-demographic characteristic, region and local authority, England (outlook.com)
Children	<ul style="list-style-type: none"> • Child Health Information Services Local Government Association • the child should be given the injectable QIVc (createsend1.com) • Intranet Portal - Logon (phe.gov.uk)
Adults	<ul style="list-style-type: none"> • Immunisation patient group direction (PGD) templates • Shingles immunisation programme: introduction of Shingrix® letter
Vaccine Update	<ul style="list-style-type: none"> • Vaccine update: issue 331, August 2022 - GOV.UK (www.gov.uk) • Vaccine update: issue 329, May 2022 - GOV.UK (www.gov.uk) • Vaccine update: issue 328, May 2022, Shingrix® special edition - GOV.UK (www.gov.uk) • Vaccine update: issue 327, May 2022, SCID, TB and BCG special edition (www.gov.uk) • Vaccine update: issue 326, April 2022, HPV special edition - GOV.UK (www.gov.uk) • Vaccine update: issue 325, April 2022, flu special edition - GOV.UK (www.gov.uk)

PGD	<ul style="list-style-type: none"> • Hib/MenC: patient group direction (PGD) template - GOV.UK (www.gov.uk)
Travel Health	<ul style="list-style-type: none"> • Travel Health Pro • Fit for Travel • Travel Health • Jane Chiodini • Corona.Help
Mental Health / Learning Disability / Disability	
Mental Health	<ul style="list-style-type: none"> • Mental Health • Mental Health UK • Mind • Place2b • Rethink Mental Illness • Young Minds • Every Mind Matters • Calm • Headspace • Better Health - Every Mind Matters - Resources • ZSA Training • NHS > Mental Health • Rate of mental disorders among 17 to 19 year olds increased in 2022, new report shows - NDRS (digital.nhs.uk) • Cost of living and depression in adults, Great Britain: 29 September to 23 October 2022, (outlook.com) • NHS England » Discharge challenge for mental health and community services providers
Learning Disability	<ul style="list-style-type: none"> • Learning Disabilities • Learning Disability England • Mencap • Bild • Autism • No wrong door: A vision for mental health, autism and learning disability services in 2032: parliamentary briefing
Disability (Inc. hearing and visual)	<ul style="list-style-type: none"> • Disability Rights UK • Disability Matters • RNID - National hearing loss charity • Spokzpeople • Sight Loss Data Tool RNIB • Sliding doors – what can we learn from history to improve disabled people’s experiences of health and care? (kingsfundmail.org.uk) • Disability and ageing – time to think outside our silos? (kingsfundmail.org.uk) • Disability equality in medicine (bma-mail.org.uk)

From Cradle to...

<p>Infant Health</p>	<ul style="list-style-type: none"> • Tommys • First Steps Nutrition Trust • Bliss • ICON Toolkit • Sandwell - BC - ICB Primary Care - 7 minute briefing
<p>Child Health</p>	<ul style="list-style-type: none"> • Unicef • Health Professional Academy • Premature Babies • Child and Maternal Health • Women and Child First • Child Health Information Services • Place2b • Childhood eczema • Childhood asthma • Paediatrics for Primary Care (and anyone else) (gppaedstips.blogspot.com) • Barnardos • Childrens Society • NHS England » Group A Strep • Core20PLUS5 infographic – children and young people • Shocking inequality in children with asthma admitted to hospital in London (kingsfundmail.org.uk) • Here (journalofpracticenursing.co.uk) National care bundle for children with asthma • Ten top tips: Supporting disengaged children and young people with diabetes to self-care - DiabetesontheNet • NHS England » Group A streptococcus communications to clinicians • Group A streptococcal infections: report on seasonal activity in England, 2022 to 2023 - GOV.UK (createsend1.com) • written to pharmacists about Group A Strep and antibiotic supply (createsend1.com) • letter has also gone out to systems (createsend1.com) • NHS.UK Strep A webpage (createsend1.com) • Paediatric focus from GPn (contains promotional information from SMA Nutrition: Evidence-based colic management) (mailchi.mp)
<p>Adolescent Health</p>	<ul style="list-style-type: none"> • Adolescent Health Programme • Society for Adolescent Health and Medicine • Young Minds • Rate of mental disorders among 17 to 19 year olds increased in 2022, new report shows - NDRS (digital.nhs.uk) • Do youth workers have a role in improving diabetes transition services? - DiabetesontheNet

Women's Health

- [Womens Health Concern](#)
- [Well Being of Women](#)
- [Coppa Feel](#)
- [Menopause Matters](#)
- [The Menopause Charity](#)
- [Royal College of Obstetricians and Gynaecologists - Guidelines](#)
- [Pelvic Partnership](#)
- [CRUK - Womens Cancer](#)
- [Breast Cancer Now](#)
- [Foundation for Women's Cancer](#)
- [Eve Appeal](#)
- [Ovarian.Org](#)
- [Jo's Trust](#)
- [Well Spring](#)
- [Know your Lemons](#)
- [British Menopause Society - www.thebms.org.uk](#)
- [NHS - www.nhs.uk/conditions/menopause](#)
- [Henpicked - henpicked.net](#)
- [The Menopause Exchange - www.menopause-exchange.co.uk](#)
- [Women's Health Concerns - www.womens-health-concern.org](#)
- [Menopause Matters - www.menopausematters.co.uk](#)
- [The Daisy Network - www.daisynetwork.org](#)
- [Dr Louise Newson's Menopause Doctor - www.menopausedoctor.co.uk](#)
- [Manage My Menopause - www.managemymenopause.co.uk/menopause-advice](#)
- [Menopause Support - menopausesupport.co.uk](#)
- [Bourne2Care](#)
- [Vaginal atrophy: what is it and how can it be treated? \(practicenursing.com\)](#)
- [Target ovarian cancer](#)
- [CPD module: Diagnosis and management of endometriosis \(cogora.com\)](#)
- [PCN Women's Health Study Day \(mahealthcarevents.co.uk\)](#)
- [CPD module: Diagnosis and management of endometriosis](#)
- [NICE guidelines on menopause issued](#)
- [£1.97 million awarded to support women in the workplace - GOV.UK \(www.gov.uk\)](#)
- [Poorer women in UK have sixth-highest cancer death rates in Europe, WHO finds \(kingsfundmail.org.uk\)](#)

Mens Health	<ul style="list-style-type: none"> • Mens Health Forum • Mens Health Month • Mens health.org • Mens Health UK • Men and mental health • Men's Mental Health Awareness • Prostate Cancer UK • Orchid Fighting Male Cancer • Prostate Cancer UK Facebook Page • Movember
The Older Population	<ul style="list-style-type: none"> • BGS • Ageing Better • Delirium Champions - YouTube • Disability and ageing – time to think outside our silos? (kingsfundmail.org.uk)
Carers / Social Care / Care Homes	<ul style="list-style-type: none"> • The Care Provider Alliance • Skills for Care • The Care Workers' Charity • Supporting Adult Carers • The Care UK • Adult Social Care Update • BREAKING NEWS from The Carer (ourmailsender4.com)
Young Carers	<ul style="list-style-type: none"> • Young carers: who are they and why do they need support? Action For Children • Young carers Barnardo's (barnardos.org.uk) • Young Carers in Schools Free Initiative Carers Trust • Being a young carer: your rights - NHS (www.nhs.uk) • Supporting Young Carers The Children's Society (childrenssociety.org.uk) • Young carers and carers of children under 18 - Carers UK
Family Planning & Sexual Health	
Family Planning	<ul style="list-style-type: none"> • Faculty of Sexual and Reproductive Healthcare Education and Training
Reproductive	<ul style="list-style-type: none"> • Tommys
Sexual Health / Sexual Abuse	<ul style="list-style-type: none"> • Sexual and Reproductive Health Profiles • FSRH Education & Training • HIV testing, PrEP, new HIV diagnoses, and care outcomes for people accessing HIV services: 2022 report (outlook.com)
Maternity / Neonate health	

Care of Patients with Long Term Conditions	
LTC	<ul style="list-style-type: none"> • Physical Activity for the Prevention and Management of Long-Term Conditions • Health A to Z
Diabetes & Pre-Diabetes	<ul style="list-style-type: none"> • Mumoactive • The mySugr App • PCDS Entry level module series - Foot Check • Type 2 diabetes in adults: management • DiabetesontheNet Online diabetes journals, education and resources for healthcare professionals. • New material could promote wound healing for diabetes patients (cogora.com) • Diabetes Distilled: Putting our best foot forward in motivating foot self-care - DiabetesontheNet • Ten top tips: Supporting disengaged children and young people with diabetes to self-care - DiabetesontheNet • Do youth workers have a role in improving diabetes transition services? - DiabetesontheNet • Digest: Glow in the dark ulcers - DiabetesontheNet
Respiratory	<ul style="list-style-type: none"> • Spirometry: step by step • ARTP • British Lung Foundation • The Primary Care Respiratory Society • Respiratory – RespiMat® patient resources Boehringer Ingelheim (boehringer-ingelheim.com) • Respiratory News & Advice (nursinginpractice.com) • Dudley pulmonary rehab - Template PI (dgft.nhs.uk) • Supporting patients on home ventilation
COPD	<ul style="list-style-type: none"> • Right Breathe • GOLD COPD 2022 strategy Independent professional body guideline Guidelines
Asthma	<ul style="list-style-type: none"> • Asthma UK • Asthma: diagnosis, monitoring and chronic asthma management • Global Initiative for Asthma • British guideline on the diagnosis and pharmacological management of asthma in children • National care bundle for children with asthma
Hypertension	<ul style="list-style-type: none"> • British Heart Foundation • Blood Pressure UK • Hypertension in adults: diagnosis and management • Hypertension in adults: diagnosis and treatment • Hypertension: symptoms to look out for and treatment options (rcni.com) • Nurse-led project launched to tackle high blood pressure in black communities (cogora.com)

Continuation of Long Term Conditions

CVD/AF	<ul style="list-style-type: none"> • QRISK®3-2018 risk calculator • Heart Rhythm Alliance • CVD risk assessment and management • NHS lipid management pathway NHS guideline Guidelines • ECG masterclass programme - ON DEMAND Registration, Thu 15 Dec 2022 at 21:00 Eventbrite • Cancer History Should Be Included in Cardiovascular Risk Scores (medscape.com) • Rivaroxaban treatment for six weeks versus three months in patients with symptomatic isolated distal deep vein thrombosis: randomised controlled trial The BMJ
Heart Failure	<ul style="list-style-type: none"> • British Heart Foundation • British Society Guidelines • NHS England » Putting patients at the heart of heart failure services • Safety, tolerability and efficacy of up-titration of guideline-directed medical therapies for acute heart failure (STRONG-HF): a multinational, open-label, randomised, trial - The Lancet
Cancer / Oncology	<ul style="list-style-type: none"> • Surviving Thyroid Cancer • Help Us Help You - Lung Cancer Symptoms • Breast Cancer Now • Macmillian • Bowel Cancer UK • Brain Trust • CRUK • Action Cancer • Foundation for Women's Cancer • NHS England » Cancer • Poorer women in UK have sixth-highest cancer death rates in Europe, WHO finds (kingsfundmail.org.uk) • Drinking alcohol can prevent 7 types of cancer • BMS Tools for Clinicians
Chronic Kidney Disease	<ul style="list-style-type: none"> • Kidney.Org • Kidney Quality Improvement Partnership
Liver Disease	<ul style="list-style-type: none"> • British Liver Trust • Liver Research • BRITISH ASSOCIATION FOR THE STUDY OF THE LIVER • LIVERnORTH • LIVER DISEASE AND CIRRHOSIS

Continuation of Long Term Conditions

Blood Disorders	<ul style="list-style-type: none"> • Blood Cancer UK • UK Thalassaemia Society • The ITP Support Association • UK-ITP Paediatric ITP Registry • The Haemophilia Society • UK MDS Forum • Pernicious Anaemia Society • Haemochromatosis UK
G.I	<ul style="list-style-type: none"> • GIST Cancer UK • Pernicious Anaemia Society • Antibiotics shown to reduce risk of aspirin-induced GI bleeding • The cost of opioid induced constipation
ENT	
G.U	
ME / CFS / Fibromyalgia	<ul style="list-style-type: none"> • ME Association • ME Research • Action for M.E • Fibromyalgia Action UK • Fibromyalgia UK • Home - Fibromyalgia Awareness UK (fibroawarenessuk.org) • Fibromyalgia - Symptoms, diagnosis and treatment BMJ Best Practice • Fibromyalgia - The Brain Charity
Neurological Conditions	<ul style="list-style-type: none"> • The Brain Tumour Charity • Narcolepsy.Org • ACNR • MS Society UK Information, research and support Multiple Sclerosis Society UK • Home MS Trust





Continuation of Long Term Conditions

<p>Musculoskeletal Conditions</p>	<ul style="list-style-type: none"> • Rheumatology • National Axial Spondyloarthritis Society • Musculoskeletal health • Musculoskeletal health: 5 year prevention strategic framework • Faculty of Occupational Medicine • Guide to embedding your first contact physiotherapy service • Rheumatology - Getting It Right First Time - GIRFT • Nursing in Practice - Musculoskeletal • Four new pathways (createsend1.com)
<p>Endocrine Disorders / Metabolic Disorders</p>	<ul style="list-style-type: none"> • Society for Endocrinology • Turner Syndrome Support Society • Thyroid Eye Disease • British Thyroid Foundation • Thyroid UK • The Pituitary Foundation • Addisons Disease • Parathyroid UK • The Royal Osteoporosis Society • Metabolic Support UK
<p>Frailty</p>	<ul style="list-style-type: none"> • Recognising frailty • Identifying frailty • CLINICAL FRAILTY SCALE
<p>Dementia / Alzheimers</p>	<ul style="list-style-type: none"> • Dementia UK • Age UK - Understanding Dementia • Delirium Champions • Alzheimers Society

Continuation of Long Term Conditions

Dermatology	<ul style="list-style-type: none"> • British Association of Dermatologists • Eczema • The British Skin Foundation • Acne vulgaris: management • The Primary Care Dermatology Society • Acne.org • Allergy UK • Urticaria • Hives • Sunburn • Causes of cancer and reducing your risk • What is Rosacea? • Rosecea • The Rosacea Forum • Herpes Viruses Association • Shingles • Fungal Skin Infection - Foot • The Psoriasis Association • National Psoriasis Foundation • Melanoma • Skin Health Information • British Association of Plastic Reconstructive and Aesthetic Surgeons - Procedure Guides • Warts and verrucae
Allergy / Auto-immune / Genetic Conditions	<ul style="list-style-type: none"> • Allergy UK • British Society for Rheumatology • Addisons Disease
Obesity	<ul style="list-style-type: none"> • Obesity UK • Following, not leading: politicians and public opinion on action to support better health (kingsfundmail.org.uk) • New obesity treatments and technology to save the NHS billions (kingsfundmail.org.uk)
Pain Management	<ul style="list-style-type: none"> • Pain Concern
Osteoporosis / Falls	

Continuation of Long Term Conditions

Genomics	
Multi-Morbidity	<ul style="list-style-type: none"> • Multimorbidity • Multimorbidity / multiple long-term conditions (MLTC)
Minor Illness / First Contact Assessment / OSCE	<ul style="list-style-type: none"> • Fact Sheets - Self Care Forum • OSCE Checklists  (mlsend.com) • OSCE Flashcards  (mlsend.com) • 600+ OSCE Stations  (mlsend.com) • Anatomy Flashcards  (mlsend.com) • Health A to Z • NHS England » Group A Strep • Free CPD module on MIMS Learning covers invasive group A streptococcus diagnosis and prescribing • Lightning Learning: Scarlet Fever
Other / Case Studies	
Winter / Summer Pressures	<ul style="list-style-type: none"> • NHS England » NHS delivers on winter plan as system control centres go live

End of Life Care	
End of Life Care / Bereavement	<ul style="list-style-type: none"> • ReSPECT for healthcare professionals • Hospice UK • DNAR forms and CPR decisions - Compassion in Dying • Do Not Resuscitate: Forms and Information – End of Life care, and what to expect (dnar.co.uk) • DNAR Decision-Making British Institute of Human Rights (bihr.org.uk) • Guidance: DNACPR and CPR decisions Resuscitation Council UK • Do Not Attempt Resuscitation Do Not Attempt Resuscitation (DNAR) Guidelines Guidelines • DNR: A guide for understanding your rights and challenging decisions – Learning Disability England • DNAR forms and CPR decisions - Compassion in Dying • My Living Will - Welcome to My Living Will • Power of Attorney: Plan ahead - MoneySavingExpert • Making a will: Write your will - GOV.UK (www.gov.uk) • Advance decision (living will) - NHS (www.nhs.uk) • Mind the gaps: understanding and improving out-of-hours care for people with advanced illness and their informal carers (kingsfundmail.org.uk)
Flu / Covid-19 / Monkeypox	
Covid-19	<ul style="list-style-type: none"> • Technical report on the Covid-19 pandemic in the UK
Flu	
Long covid	<ul style="list-style-type: none"> • Your Covid Recovery • Long Term Effects of Covid • Post Covid Syndrome - Long Covid • COVID-19 Yorkshire Rehabilitation Screening Tool • FOM Guidance • Long Covid Toolkit • Caring for People with Long Covid (qni.org.uk)
MONKEY POX	

News & Views

<p>Digital News / Remote Consultations / AI</p>	<ul style="list-style-type: none"> • Digital Health News Webinars • Digital Health News • NHS Digital • DigiHealthWell • Public Sector Events, Conferences and Training - Inside Government • Digital Transformation • Digital Health News - 1 December 2022 (mailchi.mp) • Digital Health Digest - 2 December 2022 (mailchi.mp) • Your daily news updates from Digital Health (campaign-archive.com) • [WEBINAR] New Spotlight Series for Networks members (mailchi.mp) • Your daily news updates from Digital Health (campaign-archive.com) • Telecare stakeholder action plan: analogue to digital switchover - GOV.UK (outlook.com) • Digital Health Digest - 9 December 2022 (mailchi.mp) • Your daily news updates from Digital Health (campaign-archive.com) • Special Report: Interoperability • Can digital address health inequalities? (mailchi.mp)
<p>PSNC News / Pharmacy</p>	<ul style="list-style-type: none"> • National Pharmacy Association • Royal Pharmaceutical Society • Medicines Learning Portal • Specialist Pharmacy Service • Pharmacy Funding Update: PSNC seeks contractor views on next steps (mailchi.mp) • November 2022 Price Concessions Final Update (mailchi.mp) • PSNC Newsletter: 2nd December (mailchi.mp) • PSNC Newsletter: 5th December (mailchi.mp) • PSNC Newsletter: 12th December (mailchi.mp)
<p>Pulse / GP Online / HSJ / NB Medical</p>	<ul style="list-style-type: none"> • GP Online • HSJ • Pulse Today
<p>Primary Care Update / PCC / PPP</p>	<ul style="list-style-type: none"> • Public Policy Projects News • Primary Care Bulletin
<p>Proactive Care</p>	
<p>Health Care Leaders Newsletters</p>	

Continuation of News & Views

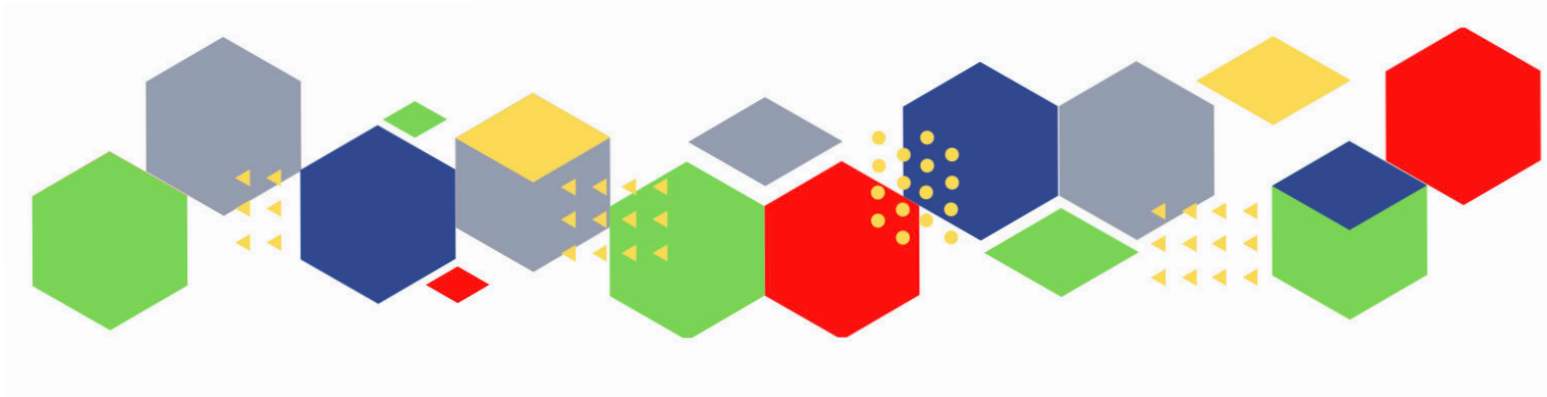
Kings Fund	<ul style="list-style-type: none"> • The Kings Fund • v The cost-of-living crisis: is the nation's health paying the price? (kingsfundmail.org.uk) • Speaking up: challenging microaggressions in the workplace (kingsfundmail.org.uk) • Innovations in social prescribing: the role of housing (kingsfundmail.org.uk) • Following, not leading: politicians and public opinion on action to support better health (kingsfundmail.org.uk) • Office for Health Improvement and Disparities Read the report (kingsfundmail.org.uk) • No wrong door: A vision for mental health, autism and learning disability services in 2032: parliamentary briefing • Health Management and Policy Alert: 13 December 2022 (kingsfundmail.org.uk)
World Health Organisation	<ul style="list-style-type: none"> • WHO • OpenWHO
IHCT / CCG / STP / Healthier Futures	<ul style="list-style-type: none"> • Black Country & West Birmingham CCG • Dudley Integrated Health and Care • Home :: Black Country Healthcare NHS Foundation Trust • Issue 22 - Black Country Primary Care Brief (sharepoint.com) • Staff News
NHSI / NHSE	
University / Student Nurses	
Medisa / Univadis / Geeky Medics / GP Notebook / Medscape	<ul style="list-style-type: none"> • Medisa • Geeky Medics • Medscape Nurses • GP Notebook • Guidelines (medscape.com) • The Geeky Medics Book + AI + Our Latest Releases! 📖📚 (mailerlite.com) • Paediatric focus from GPN (contains promotional information from SMA Nutrition: Evidence-based colic management) (mailchi.mp)
Nurse Guidelines	
The Health Foundation	<ul style="list-style-type: none"> • The Health Foundation
The Health Care Leaders Update	<ul style="list-style-type: none"> • Health Care Leader News
Practice Index	
Innovation Agency	<ul style="list-style-type: none"> • Innovation Agency Exchange

Continuation of News & Views

RCN	<ul style="list-style-type: none"> • RCN • RCN Magazines Royal College of Nursing • Blog General Practice Nursing Forum Royal College of Nursing (rcn.org.uk) • letter has been sent to ICBs regarding preparations for potential industrial action during winter 2022 (createsend1.com) • list of all NHS organisations currently signed up to take part (createsend1.com)
Nursing in Practice / Nursing Standard / Independent Nurse	<ul style="list-style-type: none"> • Nursing Times • JCN Newsletter • GPN Bulletin
QNI	<ul style="list-style-type: none"> • QNI • Talk To Us © – The Queen's Nursing Institute (qni.org.uk) • Queen's Nurse Update November 2022 (mailchi.mp)
NMC	<ul style="list-style-type: none"> • NMC
CMO / CNO	
Nice	<ul style="list-style-type: none"> • NICE
RCGP / BMA / The Lancet	<ul style="list-style-type: none"> • The Lancet • British Medical Journal • Royal College of General Practitioners • Health inequalities investigated a doctor with ADHD pay protection guidance (bma-mail.org.uk)
Midlands Academic Health Science Network	<ul style="list-style-type: none"> • WMAHSN Network • Polypharmacy - WMAHSN
Healthwatch	<ul style="list-style-type: none"> • Healthwatch
Other	<ul style="list-style-type: none"> • Patients Association

Free Training / Webinars / Meetings / CPD	
Development / Information and Knowledge	<ul style="list-style-type: none"> • Red Whale Training • Issues & Answers • Event Name: Online Training Course: Developing an Effective Nursing Retention Strategy Event Date: 28 February 2023 • ECG masterclass programme - ON DEMAND Registration, Thu 15 Dec 2022 at 21:00 Eventbrite • Free CPD module on MIMS Learning covers invasive group A streptococcus diagnosis and prescribing • Booking: Wound Care Today March 2023 - Wound Care Today (woundcare-today.com) • You are invited to attend the 16th National Wound Conference (mahealthcareevents.co.uk) • PCN Live is back! Register now (mahealthcareevents.co.uk) • Wounds Week 5 continues today! (mahealthcareevents.co.uk) • HEE elfh Hub (e-lfh.org.uk) - Understanding Eating Disorders Webinar resource for dietitians, oral health teams and community pharmacy teams • 10 January 2023, 12pm-1.30pm. Wessex AHSN and NHS BSA 2nd Opioid Prescribing Comparators • 11 January 2023 1pm – 2.30pm. More Than an Art Group: The Relationship Between Creative Health and Social Prescribing • 12 January 2023, 5pm – 6pm. General Practice Webinar • 18 January 2023, 10am– 11am. An introduction to working with people and communities • 18 January 2023, 2pm – 3pm. January's Wellbeing Wednesday Community Event • Watch our series of General Practice webinars • Watch our series of Primary Care Network webinars • Inflammatory bowel disease toolkit: Introduction (rcgp.org.uk)
Free to RCN	<ul style="list-style-type: none"> • RCNi events RCNi • RCN Shropshire AGM and learning event Event Royal College of Nursing
MIMMs Learning	
Eventbrite	
e-Learning for Health	
YouTube	<ul style="list-style-type: none"> • NHS England • Black Country Healthcare - YouTube
Future Proof Health Training	<ul style="list-style-type: none"> • Training
BCWB Training Hub	<ul style="list-style-type: none"> • Latest news from the Black Country Training Hub (campaign-archive.com)
Evidence based care	

Podcasts	<ul style="list-style-type: none"> • The Nursing Handover Podcast • Nursing Standard Podcasts • Nursing Matters • Welcome to the BJN Podcast • Cygnet Health Care Podcast • EBN podcast • This Is Nursing • Teach me, I'm a Nurse • Past Caring • RCGP eLearning podcast • The BMJ Podcast • Primary Care Network podcasts • The Professional Support Unit's Pandemic Podcast • The Next GenCast • The cost-of-living crisis: is the nation's health paying the price? (kingsfundmail.org.uk) • NB Podcast - S4 E5: Thinking distal DVTs; High dosage in Heart Failure; Just One More Thing... Rachel Ainley discusses IBD (outlook.com)
Apps	<ul style="list-style-type: none"> • Nursing in Practice launches mobile app
Area Bulletins	
Research	<ul style="list-style-type: none"> • Science Daily • Multimorbidity / multiple long-term conditions (MLTC) • National Institute for Health and Care Research • UKRI publishes updated diversity data and analysis
Blogs/Vlogs	<ul style="list-style-type: none"> • Blog NB Medical
Freebies	<ul style="list-style-type: none"> • Blue Light Card
Campagne Links	
Other	



Thank you for reading Future Proof Health's weekly news!

If you missed past issues, please click [here](#) to view them

More information can be found on our website, [here](#)

Don't forget to like us on [Facebook](#) & Follow us on [Twitter](#)

