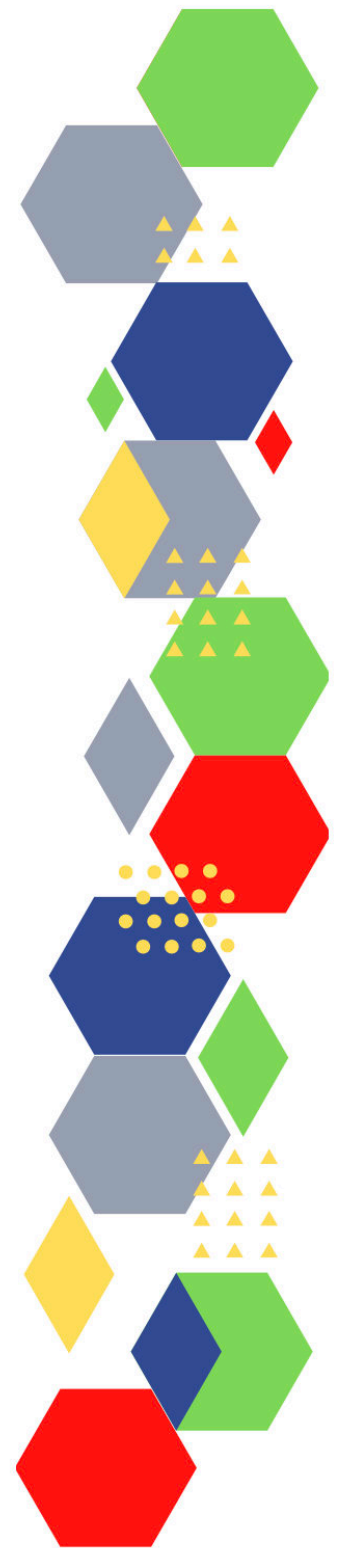
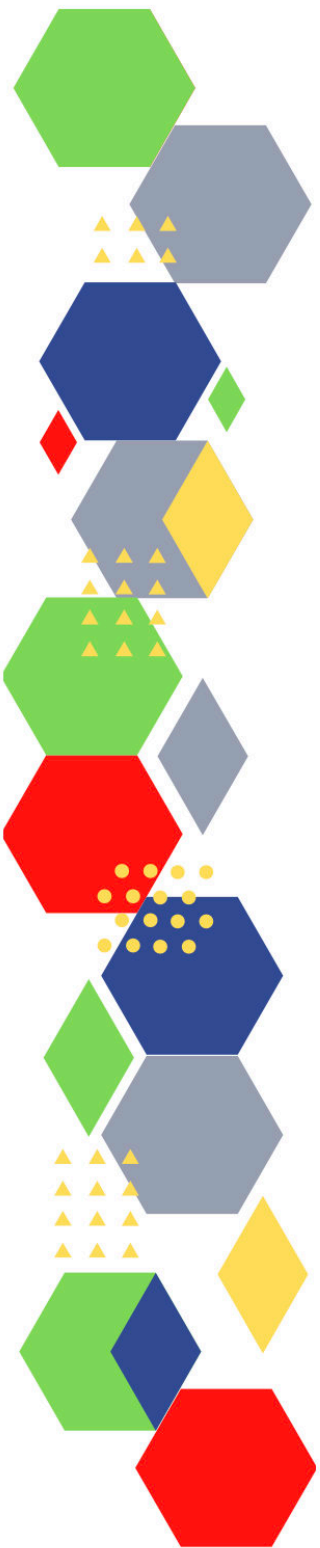




Future Proof Health Presents

Weekly News

23rd September 2022



Communication	
Communication with Patients	
Communication within Teams	
Consent	<ul style="list-style-type: none"> • Gillick competency and Fraser guidelines • ReSPECT for healthcare professionals
People and Personal Development	
Personal / People Development / Leadership	<ul style="list-style-type: none"> • Accountability and delegation in practice
NHS Employers / HR / NHS Pension	<ul style="list-style-type: none"> • NHS Employers • Pensions Online
Health, Safety & Security	
	<ul style="list-style-type: none"> • NPSA • Control of Substances Hazardous to Health (COSHH)
Gov UK - NHS	
CQC	<ul style="list-style-type: none"> • GP mythbusters • Prescribing the resolution of conflict in general practice • PEOPLE FIRST - Care Quality Commission (cqc.org.uk)
MIMS	<ul style="list-style-type: none"> • Prescribing Update • PPI use inappropriate in over half of cases, study suggests MIMS online (mkt6316.com)
Antibiotic steward-ship / Anti-microbial resistance	<ul style="list-style-type: none"> • v Research update: Social factors in remote consulting and antibiotic prescribing (nursinginpractice.com) • Quick guide for organisational WAAW videos • Combatting antibiotic resistance (independentnurse.co.uk) • Antibiotic Guardian WAAW 2021 Online Knowledge Cafe <p>#AntibioticGuardain #KeepAntibioticsWorking #WAAW2022</p>

Drug / Device Alerts (MHRA)	<ul style="list-style-type: none"> • Drug Safety Update (mhradrugsafety.org.uk) • Class 4 Medicines Defect Information: Quadrant Pharmaceuticals Limited, Bezalip Mono 400mg Tablets, EL (22)A/38 • MHRA - Class 4 Medicines Defect Information: Rosemont Pharmaceuticals Ltd, Atorvastatin 4mg/ml Oral Suspension & Sildenafil 10mg/ml Oral Suspension , EL (22)A/39
Emergency Situations	<ul style="list-style-type: none"> • Resuscitation Council UK
Infection Control / Infection Statics	<ul style="list-style-type: none"> • NHS England » National infection prevention and control • Vulnerable consumers advised of ongoing risk of Listeria associated with ready to eat smoked fish Food Standards Agency • Clostridioides difficile infection: guidance on management and treatment - GOV.UK (www.gov.uk)
Vaccines / Medications / Prescribing	<ul style="list-style-type: none"> • Protocol for ordering, storing and handling vaccines • A Competency Framework for all Prescribers • Non-medical prescribing • The Human Medicines Regulations 2012 • RCN - Non-medical prescribers • Royal Pharmaceutical Society • Standards for prescribing • Clinical Negligence Scheme for General Practice • Home - electronic medicines compendium (emc) • Drug shortages - live tracker MIMS online • Antipsychotic shortage continues - need to sign in
Safe Guarding	<ul style="list-style-type: none"> • Female genital mutilation (FGM) • PREVENT • Child protection system in the UK • Safeguarding Adults • Safeguarding children: detailed information • Domestic abuse victim services, England and Wales: 2022 (www.gov.uk) • Wolverhampton only - WST Training Update - September 2022 (govdelivery.com) • 8th Annual Tackling Violence Against Women and Girls Forum 12 Oct, 2022:45 am-4:15 pm Central London (insidegovernment.co.uk) • Tackling Child Sexual Exploitation Conference 2022 15 Nov, 2022:45 am-4:15 pm Central London (insidegovernment.co.uk) • NHS Prevent training and competencies framework - GOV.UK (www.gov.uk) • Statistics on adult safeguarding published in new report - NHS Digital

Practice Policies	
Audit	
Information Governance / Record Keeping	<ul style="list-style-type: none"> • Guide to Data Protection • Supporting general practice – Medical record keeping • PRSB Newsletter: August 2022 (theprsb.org) • The Duty of Candour in Healthcare Forum 2022 (insidegovernment.co.uk)
Quality & Service Improvement	
Quality, Service & Improvement	<ul style="list-style-type: none"> • The PRSB • General Practice Assessment Questionnaire (GPAQ) • Healthwatch • NHS Five Year Forward View • General Practice Forward View • NMC • Dr Jon Griffiths Blog • NHS Confed • Building better health: exploring opportunities for healthcare estate under integrated care systems Good Governance (good-governance.org.uk) • Addressing the leading risk factors for ill health • New horizons: What can England learn from the professionalisation of care workers in other countries? (nuffieldtrust.org.uk) • Safer care for all. Solutions from professional regulation and beyond (professionalstandards.org.uk)
Roles in General Practice	<ul style="list-style-type: none"> • Standards for nursing associates • GP mythbuster 57: Health Care Assistants in General Practice
Revalidation	
Personal Practice & Development	
Practice Management	<ul style="list-style-type: none"> • Institute of General Practice Management • Practice Index
Employment / Retirement / Legacy Nursing	

NHS Self Care & Resilience	<ul style="list-style-type: none"> • Samaritans • Mental Health at work • Calm • Supporting our NHS people • The Hub :: Black Country Healthcare NHS Foundation Trust
Practice Transformation / Innovation Agency	
Future of NHS / General Practice / NHS Recovery	<ul style="list-style-type: none"> • NHS England • NHS England » Primary care • NHS mandate 2022 to 2023 • Letter to the new Secretary of State for Health and Social Care NHS Confederation (kingsfundmail.org.uk) • NHS England » NHS people plan pillars, our people promise and the future of human resources and organisational development 2030 vision infographic
ICS / ICB / ICP / PCN Commissioning	<ul style="list-style-type: none"> • Integrated care (england.nhs.uk) • What we've heard :: Black Country ICS
QOF / PHOF / DES / LES / NHS Contract / CQRS / CQUIN	
Leadership / Innovation	<ul style="list-style-type: none"> • Leadership Academy
Greener NHS	
Personalised Care	
Personalised Care / Self Care / Social Prescribing / Health Coaching	<ul style="list-style-type: none"> • Self Care forum • Personalised Care Institute • Personalised care • Social Prescribing Academy
Group consultation	
Working Differently	
Shared Decision Making	<ul style="list-style-type: none"> • Personalised Care Institute

Equality & Diversity	
Equality & Diversity	<ul style="list-style-type: none"> • Public Health Profiles
Inclusion Health	<ul style="list-style-type: none"> • Health Creation Academic Network • Inequality on the inside
Poverty / Homelessness	<ul style="list-style-type: none"> • Crisis • This is Poverty • Health and Housing Conference 2022 13 Oct, 2022 9:00 am-4:20 pm London (insidegovernment.co.uk)
Population Health / Health Communities	
Thrive Into Work	<ul style="list-style-type: none"> • Thrive into Work • Thrive into Work Referral form
Health Inequalities	<ul style="list-style-type: none"> • NHS News
Trans / Non-binary Health / LGBTQ+	<ul style="list-style-type: none"> • LGBT Foundation • Surgery staff grab sheet (squarespace.com) • Trans inclusive organisations — TransActual • TransActual - Healthcare • CliniQ • LGBT Foundation - Healthcare Professionals • Supporting trans people: a quick guide for GPs — TransActual
Migrant / Refugee Health	<ul style="list-style-type: none"> • THE REFUGEE & MIGRANT CENTRE • Barriers and Opportunities: Improving access to mental health support for refugees and people seeking asylum • Action needed to improve refugee and migrant health (independentnurse.co.uk)
Traveller / Gypsy / Romany Health	<ul style="list-style-type: none"> • Gypsy Roma and Traveller History and Culture The Traveller Movement • Friends, Families and Travellers (gypsy-traveller.org)
Veterans Health	<ul style="list-style-type: none"> • The first call for help takes courage

Management of Emergency Situations	
Management of Emergency Situations	
111 / Emergency Care	
First Contact	<ul style="list-style-type: none"> • Supporting general practice – Common pitfalls • Paediatrics for Primary Care (and anyone else) (gppaedstips.blogspot.com)
Red Flags	
Sepsis	<ul style="list-style-type: none"> • Sepsis: recognition, diagnosis and early management • Sepsis guidance implementation advice for adults • Sepsis in Children • Sepsis Trust • quick SEPSIS RELATED ORGAN FAILURE ASSESSMENT
Therapeutic Monitoring	
OSCE	<ul style="list-style-type: none"> • Geeky Medics • Abdominal Examination - Demonstration - YouTube • Cardiovascular Examination - Demonstration - YouTube • Respiratory Examination - Demonstration - YouTube • Physical Diagnosis Skills - University of Washington School of Medicine • Practice Nursing - Assessment and examination of the respiratory system
Role Specific	
Cervical Cytology	<ul style="list-style-type: none"> • Guide to the interim assessment • British Association for Cytopathology • Lab Tests Online
Ear Care	<ul style="list-style-type: none"> • Ear Care Centre • RNID

Wound Management	<ul style="list-style-type: none"> • Microworld • Tissue Viability Society • The BLS
Minor Surgery	
Obtaining Samples / Results	<ul style="list-style-type: none"> • Lab Tests Online
Health Promotion / Health Screening	
Health Promotion / Population Health	<ul style="list-style-type: none"> • Better Health • Health benefits of 10,000 steps improve with increased pace - Nursing in Practice
Health Screening	<ul style="list-style-type: none"> • PHE Screening
PHE / OHID / UKHSA	<ul style="list-style-type: none"> • Knowledge & Library Services • Campaign Resources • Public Health Profiles • Health Publications • Health Profile for England 2021 • English indices of deprivation 2019 • Ambulance quality indicators clinical outcomes: April 2022, NHS England, 8 September 2022 • Characteristics associated with the risk of death involving coronavirus (Covid-19) among people receiving a booster vaccination, England: January to March 2022, Office for National Statistics, 8 September 2022 • Community services statistics: June 2022, NHS Digital, 6 September 2022 • Coronavirus (Covid-19) infection survey, UK: 16 September 2022, Office for National Statistics, 16 September 2022 • Covid-19 health inequalities monitoring in England tool, Office for Health Improvement and Disparities, 15 September 2022 • Dementia profile updates, Office for Health Improvement and Disparities, 6 September 2022 • HM Prison and Probation Service Covid-19 statistics: August 2022, Ministry of Justice, 12 September 2022 • Integrated Urgent Care Aggregate Data Collection (IUC ADC): March 2022 (provisional statistics), NHS England, 8 September 2022 • Learning disability services monthly statistics, assuring transformation: August 2022, mental health services data set: June 2022, final, NHS Digital, 15 September 2022 • National flu and Covid-19 surveillance report: 15 September 2022 (week 37), UK Health Security Agency, 15 September 2022

<i>Continuation of Health Promotion / Health Screening</i>	
NHS Health Check	<ul style="list-style-type: none"> • NHS Health Check
NOIDS / PHE Surveillance / Syndromic Surveillance	<ul style="list-style-type: none"> • Syndromic surveillance: systems and analyses - GOV.UK (www.gov.uk) • Notifications of infectious diseases (NOIDs) - GOV.UK (www.gov.uk) • Hospital Accident & Emergency Activity, 2021-22 (www.gov.uk) • Patients Registered at a GP Practice, September 2022 - GOV.UK (www.gov.uk) • Weekly all-cause mortality surveillance: 2022 to 2023 (www.gov.uk) • GP in hours: weekly bulletins for 2022 - GOV.UK (www.gov.uk) • GP out-of-hours syndromic surveillance: weekly bulletins for 2022 (www.gov.uk) • Syndromic surveillance: weekly summaries for 2022 (www.gov.uk) • Remote health advice: weekly bulletins for 2022 (www.gov.uk) • National ambulance syndromic surveillance: weekly bulletins 2022 (www.gov.uk) • Emergency department: weekly bulletins for 2022 - GOV.UK (www.gov.uk)
UK GOV Deaths / Suicide / Palliative Care	<ul style="list-style-type: none"> • Deaths registered weekly in England and Wales, provisional: week ending 26 August 2022 - GOV.UK (www.gov.uk) • Recorded Dementia Diagnoses, August 2022 - GOV.UK (www.gov.uk)
UK GOV Infectious Disease Monitoring	
Addiction/Smoking	<ul style="list-style-type: none"> • Drink Coach • Stop smoking interventions and services

Immunisation / Travel Health

- [Joint Committee on Vaccination and Immunisation](#)
- [Immunisation against infectious disease](#)
- [West Midlands Immunisation Service](#)
- [Vaccination of individuals with uncertain or incomplete immunisation status](#)
- [Immunisation Queries: Immunisation information for Health Care Services within the West Midlands area](#)
- [Immunisation](#)

Flu

- [Flu and flu vaccinations](#)
- [The national influenza immunisation programme 2021 to 2022](#)
- [Flu vaccines for the 2021 to 2022 season poster](#)
- [Appendix C: Flu vaccinator competency assessment tool](#)
- [Healthcare assistants and flu vaccinations](#)
- [Autumn COVID-19 booster and flu system letter \(england.nhs.uk\)](#)
- [Immunisation training standards for healthcare practitioners - GOV.UK \(www.gov.uk\)](#)
- [Immunisation training of healthcare support workers: national minimum standards and core curriculum - GOV.UK \(www.gov.uk\)](#)
- [Publications | Royal College of Nursing \(rcn.org.uk\)](#)
- [Immunisation Knowledge and Skills Competence Assessment Tool | Publications | Royal College of Nursing \(rcn.org.uk\)](#)
- [National flu and COVID-19 surveillance reports: 2021 to 2022 season - GOV.UK \(www.gov.uk\)](#)
- [Department of Health and Aged Care | Australian Influenza Surveillance Report and Activity Updates](#)
- [Weekly all-cause mortality surveillance: 2022 to 2023 - GOV.UK \(www.gov.uk\)](#)
- [Annual flu programme - GOV.UK \(www.gov.uk\)](#)
- [Influenza: the green book, chapter 19 - GOV.UK \(www.gov.uk\)](#)
- [National protocol for inactivated influenza vaccine - GOV.UK \(www.gov.uk\)](#)
- [NHS England » Seasonal influenza service specifications and collaboration agreement](#)
- [NHS England » Reimbursable vaccines and eligible cohorts for the 2022/23 NHS Seasonal Influenza \(flu\) Vaccination Programme](#)
- [NHS England » COVID-19 autumn booster and flu vaccine programme expansion](#)
- [Statement of amendments to annual flu letter – 21 July 2022 - GOV.UK \(www.gov.uk\)](#)
- [Flu vaccines: 2022 to 2023 flu season - GOV.UK \(www.gov.uk\)](#)
- [Flu vaccines for children and young people for 2022 to 2023 - GOV.UK \(www.gov.uk\)](#)
- [UK immunisation schedule: the green book, chapter 11 - GOV.UK \(www.gov.uk\)](#)
- [Written instruction for the administration of seasonal flu vaccination](#)
- [Flu vaccination programme information for the healthcare practitioners](#)
- [Fluenz Tetra \(with Subtitles\)](#)

Continuation of Immunisation / Travel Health

Covid Vaccine	<ul style="list-style-type: none"> • Greenbook COVID-19 chapter 14a • COVID-19 Vaccine Moderna e-learning now available • GP COVID-19 vaccine dashboard • Updates made to the COVID-19 vaccination learning programme • COVID-19 vaccines (mims.co.uk) • Autumn COVID-19 booster and flu system letter (england.nhs.uk) • Higher-risk patients eligible for COVID-19 treatments: independent advisory group report - GOV.UK (www.gov.uk) • COVID booster available to over 65s (independentnurse.co.uk)
Children	<ul style="list-style-type: none"> • Encouraging uptake of the HPV vaccine: A guide for nurses (independentnurse.co.uk)
Adults	<ul style="list-style-type: none"> • Immunisation patient group direction (PGD) templates • Shingles immunisation programme: introduction of Shingrix® letter
Vaccine Update	<ul style="list-style-type: none"> • Vaccine update: issue 331, August 2022 - GOV.UK (www.gov.uk) • Vaccine update: issue 329, May 2022 - GOV.UK (www.gov.uk) • Vaccine update: issue 328, May 2022, Shingrix® special edition - GOV.UK (www.gov.uk) • Vaccine update: issue 327, May 2022, SCID, TB and BCG special edition (www.gov.uk) • Vaccine update: issue 326, April 2022, HPV special edition - GOV.UK (www.gov.uk) • Vaccine update: issue 325, April 2022, flu special edition - GOV.UK (www.gov.uk)
PGD	<ul style="list-style-type: none"> • Hib/MenC: patient group direction (PGD) template - GOV.UK (www.gov.uk)
Travel Health	<ul style="list-style-type: none"> • Travel Health Pro • Fit for Travel • Travel Health • Jane Chiodini • Corona.Help

Mental Health / Learning Disability / Disability	
Mental Health	<ul style="list-style-type: none">• Mental Health• Mental Health UK• Mind• Place2b• Rethink Mental Illness• Young Minds• Every Mind Matters• Calm• Headspace• Better Health - Every Mind Matters - Resources• ZSA Training• NHS > Mental Health• Antipsychotic shortage continues (mims.co.uk)
Learning Disability	<ul style="list-style-type: none">• Learning Disabilities• Learning Disability England• Mencap• Bild• Autism
Disability (Inc. hearing and visual)	<ul style="list-style-type: none">• Disability Rights UK• Disability Matters• RNID - National hearing loss charity• Spokzpeople

From Cradle to...

<p>Infant Health</p>	<ul style="list-style-type: none"> • Tommys • First Steps Nutrition Trust • Bliss • ICON Toolkit • Routine childhood immunisation schedule (mkt6316.com)
<p>Child Health</p>	<ul style="list-style-type: none"> • Unicef • Health Professional Academy • Premature Babies • Child and Maternal Health • Women and Child First • Child Health Information Services • Place2b • Childhood eczema • Childhood asthma • Paediatrics for Primary Care (and anyone else) (gppaedstips.blogspot.com) • Home (phedigital.co.uk) • Managing food allergies in children and young people (independentnurse.co.uk)
<p>Adolescent Health</p>	<ul style="list-style-type: none"> • Adolescent Health Programme • Society for Adolescent Health and Medicine • Young Minds • Students told to get up to date with vaccinations ahead of Freshers' Week
<p>Mens Health</p>	<ul style="list-style-type: none"> • Mens Health Forum • Mens Health Month • Mens health.org • Mens Health UK • Men and mental health • Men's Mental Health Awareness • Prostate Cancer UK • Orchid Fighting Male Cancer • Prostate Cancer UK Facebook Page • Movember

<p>Women's Health</p>	<ul style="list-style-type: none"> • Womens Health Concern • Well Being of Women • Coppa Feel • Menopause Matters • The Menopause Charity • Royal College of Obstetricians and Gynaecologists - Guidelines • Pelvic Partnership • CRUK - Womens Cancer • Breast Cancer Now • Foundation for Women's Cancer • Eve Appeal • Ovarian.Org • Jo's Trust • Well Spring • Know your Lemons • British Menopause Society - <u>www.thebms.org.uk</u> • NHS - <u>www.nhs.uk/conditions/menopause</u> • Henpicked - <u>henpicked.net</u> • The Menopause Exchange - <u>www.menopause-exchange.co.uk</u> • Women's Health Concerns - <u>www.womens-health-concern.org</u> • Menopause Matters - <u>www.menopausematters.co.uk</u> • The Daisy Network - <u>www.daisynetwork.org</u> • Dr Louise Newson's Menopause Doctor - <u>www.menopausedoctor.co.uk</u> • Manage My Menopause - <u>www.managemymenopause.co.uk/menopause-advice</u> • Menopause Support - <u>menopausesupport.co.uk</u> • The benefits and risks of HRT and how to communicate this to women (<u>independentnurse.co.uk</u>) • HRT Taskforce presents recommendations to support future supply - GOV.UK (<u>www.gov.uk</u>) • Levonorgestrel-releasing intrauterine systems (IUS) MIMS online (<u>mkt6316.com</u>) • Body-identical HRT available on NHS in Scotland (<u>mims.co.uk</u>) • New MIMS table comparing levonorgestrel-releasing intrauterine systems • Ovarian Cancer Charity UK's Support Charity for Ovarian Cancer Ovacom • New MIMS table comparing levonorgestrel-releasing intrauterine systems • Over-the-counter HRT product now available
<p>The Older Population</p>	<ul style="list-style-type: none"> • BGS • Ageing Better • Delirium Champions - YouTube

Carers / Social Care / Care Homes	<ul style="list-style-type: none"> • The Care Provider Alliance • Skills for Care • The Care Workers' Charity • Supporting Adult Carers
Young Carers	
Complex Needs	
Family Planning & Sexual Health	
Family Planning	<ul style="list-style-type: none"> • Faculty of Sexual and Reproductive Healthcare Education and Training • New MIMS table comparing levonorgestrel-releasing intrauterine systems
Reproductive	<ul style="list-style-type: none"> • Tommys • Folic acid added to flour to prevent brain and spinal conditions in fetuses - GOV.UK (www.gov.uk)
Sexual Health / Sexual Abuse	<ul style="list-style-type: none"> • Sexual and Reproductive Health Profiles • FSRH Education & Training
Maternity / Neonate health	

Care of Patients with Long Term Conditions	
LTC	<ul style="list-style-type: none"> • Physical Activity for the Prevention and Management of Long-Term Conditions
Diabetes & Pre-Diabetes	<ul style="list-style-type: none"> • Mumoactive • The mySugr App • PCDS Entry level module series - Foot Check • Type 2 diabetes in adults: management • Early weight loss for people with type 2 diabetes predicts success, research finds - Nursing in Practice • Visual guide to diabetes devices: Flash and continuous glucose monitoring sensors (mkt6316.com) • Insulin preparations (mkt6316.com) • Living Well Taking Control (LWTC). (lwtcsupport.co.uk)
Respiratory	<ul style="list-style-type: none"> • Spirometry: step by step • ARTP • British Lung Foundation • The Primary Care Respiratory Society • Respiratory – Respimat® patient resources Boehringer Ingelheim (boehringer-ingelheim.com) • Respiratory News & Advice (nursinginpractice.com) • Dudley pulmonary rehab - Template PI (dgft.nhs.uk)
COPD	<ul style="list-style-type: none"> • Right Breathe • GOLD COPD 2022 strategy Independent professional body guideline Guidelines
Asthma	<ul style="list-style-type: none"> • Asthma UK • Asthma: diagnosis, monitoring and chronic asthma management • Global Initiative for Asthma • British guideline on the diagnosis and pharmacological management of asthma in children
Hypertension	<ul style="list-style-type: none"> • British Heart Foundation • Blood Pressure UK • Hypertension in adults: diagnosis and management • Hypertension in adults: diagnosis and treatment • Hypertension: symptoms to look out for and treatment options (rcni.com)

Continuation of Long Term Conditions

CVD/AF	<ul style="list-style-type: none"> • QRISK®3-2018 risk calculator • Heart Rhythm Alliance • CVD risk assessment and management • NHS lipid management pathway NHS guideline Guidelines • NICE publishes first draft guidance from its Early Value Assessment pilot project recommending smartphone-linked ECG device News and features News NICE • Muscle pain in patients on statins 'rarely caused by the statin' MIMS online- may need sign in • Statins do not regularly cause muscle pain, large study finds (cogora.com) • GPnotebook focus on cardiovascular medicine (mailchi.mp) may need a log in
Heart Failure	<ul style="list-style-type: none"> • British Heart Foundation • British Society Guidelines • Pharmacological management of chronic heart failure (rcni.com)
Cancer / Oncology	<ul style="list-style-type: none"> • Surviving Thyroid Cancer • Help Us Help You - Lung Cancer Symptoms • Breast Cancer Now • Macmillian • Bowel Cancer UK • Brain Trust • CRUK • Action Cancer • Foundation for Women's Cancer • NHS England » Cancer • Ovarian Cancer Charity UK's Support Charity for Ovarian Cancer Ovacome • Pain management within pancreatic cancer - Pancreatic Cancer UK • Bowel cancer screening extended to patients aged 58 - Nursing in Practice
Chronic Kidney Disease	<ul style="list-style-type: none"> • Kidney.Org • Kidney Quality Improvement Partnership

Continuation of Long Term Conditions




Liver Disease	<ul style="list-style-type: none"> • British Liver Trust • Liver Research • BRITISH ASSOCIATION FOR THE STUDY OF THE LIVER • LIVERnORTH • LIVER DISEASE AND CIRRHOSIS
Blood Disorders	<ul style="list-style-type: none"> • Blood Cancer UK • UK Thalassaemia Society • The ITP Support Association • UK-ITP Paediatric ITP Registry • The Haemophilia Society • UK MDS Forum • Pernicious Anaemia Society • Haemochromatosis UK
G.I	<ul style="list-style-type: none"> • GIST Cancer UK • Pernicious Anaemia Society • PPI use inappropriate in over half of cases, study suggests MIMS online (mkt6316.com)
ENT	
G.U	
ME / CFS / Fibromyalgia	<ul style="list-style-type: none"> • ME Association • ME Research • Action for M.E • Fibromyalgia Action UK • Fibromyalgia UK • Home - Fibromyalgia Awareness UK (fibroawarenessuk.org) • Fibromyalgia - Symptoms, diagnosis and treatment BMJ Best Practice • Fibromyalgia - The Brain Charity

Continuation of Long Term Conditions

<p>Neurological Conditions</p>	<ul style="list-style-type: none"> • The Brain Tumour Charity • Narcolepsy.Org • ACNR • MS Society UK Information, research and support Multiple Sclerosis Society UK • Home MS Trust • Epilepsy Society • Three-minute skin swab can diagnose Parkinson's - Nursing in Practice
<p>Musculoskeletal Conditions</p>	<ul style="list-style-type: none"> • Rheumatology • National Axial Spondyloarthritis Society • Musculoskeletal health • Musculoskeletal health: 5 year prevention strategic framework • Faculty of Occupational Medicine • Guide to embedding your first contact physiotherapy service
<p>Endocrine Disorders / Metabolic Disorders</p>	<ul style="list-style-type: none"> • Society for Endocrinology • Turner Syndrome Support Society • Thyroid Eye Disease • British Thyroid Foundation • Thyroid UK • The Pituitary Foundation • Addisons Disease • Parathyroid UK • The Royal Osteoporosis Society • Metabolic Support UK
<p>Frailty</p>	<ul style="list-style-type: none"> • Recognising frailty • Identifying frailty • CLINICAL FRAILTY SCALE • Practice Nursing - Dysphagia in the older person: an update • Practice Nursing - Preventing skin tears among older adults in general practice • Assessment of frailty in Alzheimer's: a literature review
<p>Dementia / Alzheimers</p>	<ul style="list-style-type: none"> • Dementia UK • Age UK - Understanding Dementia • Delirium Champions • Alzheimers Society • Dementia profile updates - GOV.UK (www.gov.uk)

Continuation of Long Term Conditions

Dermatology	<ul style="list-style-type: none"> • British Association of Dermatologists • Eczema • The British Skin Foundation • Acne vulgaris: management • The Primary Care Dermatology Society • Acne.org • Allergy UK • Urticaria • Hives • Sunburn • Causes of cancer and reducing your risk • What is Rosacea? • Rosecea • The Rosacea Forum • Herpes Viruses Association • Shingles • Fungal Skin Infection - Foot • The Psoriasis Association • National Psoriasis Foundation • Melanoma • Skin Health Information • British Association of Plastic Reconstructive and Aesthetic Surgeons - Procedure Guides • Warts and verrucae • Psoriasis diagnoses in primary care delayed by up to five years, study shows (cogora.com) • How to reduce the risk of skin cancer by NICE Talks (soundcloud.com) • Understanding hidradenitis suppurativa
Allergy / Auto-immune / Genetic Conditions	<ul style="list-style-type: none"> • Allergy UK • British Society for Rheumatology • Addisons Disease

<i>Continuation of Long Term Conditions</i>	
Obesity	<ul style="list-style-type: none"> • Obesity UK • Adipose in Candyland: Diet and exercise in a pill (independentnurse.co.uk)
Pain Management	<ul style="list-style-type: none"> • Pain Concern
Genomics	
Multi-Morbidity	<ul style="list-style-type: none"> • Multimorbidity • Multimorbidity / multiple long-term conditions (MLTC)
Minor Illness / First Contact Assessment / OSCE	<ul style="list-style-type: none"> • Fact Sheets - Self Care Forum • OSCE Checklists  (mlsend.com) • OSCE Flashcards  (mlsend.com) • 600+ OSCE Stations ✨ (mlsend.com) • Anatomy Flashcards  (mlsend.com) • Dry eye treatments (mkt6316.com) • Ophthalmic preparations, preservatives and potential sensitisers as ingredients (mkt6316.com) • Migraine treatments and prophylactics (mkt6316.com) • Hayfever treatments (mkt6316.com)
Other / Case Studies	
End of Life Care	
End of Life Care	<ul style="list-style-type: none"> • ReSPECT for healthcare professionals • Hospice UK

Flu / Covid-19 / Monkeypox

Covid-19	<ul style="list-style-type: none"> • Covid Live • Massive global failures in COVID response (independentnurse.co.uk) • Coronavirus » Interim clinical commissioning policy: neutralising monoclonal antibodies or antivirals for non-hospitalised patients with COVID-19 (england.nhs.uk) • Higher-risk patients eligible for COVID-19 treatments: independent advisory group report - GOV.UK (www.gov.uk) • COVID-19 Hospitalisations Dashboard Friday 9 September 2022 - GOV.UK (www.gov.uk) • COVID-19 Health Inequalities Monitoring in England tool (CHIME) (www.gov.uk) • Wider impacts of COVID-19 on health monitoring tool - GOV.UK (www.gov.uk) • Coronavirus (COVID-19) Infection Survey, UK: 16 September 2022 - GOV.UK (www.gov.uk) • Consensus statements and medium-term projections on COVID-19 (www.gov.uk) • New patient cohorts eligible for COVID-19 treatments
Long Covid	<ul style="list-style-type: none"> • Supporting your recovery after COVID-19 • Long Covid Toolkit • Long term effects of COVID (Long COVID) • Post-COVID Syndrome (Long COVID) • COVID-19 Yorkshire Rehabilitation Screening Tool • FOM Guidance
Flu / Avian Flu	<ul style="list-style-type: none"> • Avian influenza in wild birds - GOV.UK (www.gov.uk) • National flu and COVID-19 surveillance reports: 2022 to 2023 season - GOV.UK (www.gov.uk)
Monkeypox	<ul style="list-style-type: none"> • Monkeypox: guidance - GOV.UK (www.gov.uk) • Monkeypox outbreak: epidemiological overview, 20 September 2022 • Monkeypox outbreak: epidemiological overview - GOV.UK (www.gov.uk)

News & Views

<p>Digital News / Remote Consultations</p>	<ul style="list-style-type: none"> • Digital Health News Webinars • Digital Health News • NHS Digital • DigiHealthWell • Public Sector Events, Conferences and Training - Inside Government • Digital Transformation • How much time are you spending on clinical documentation? (mailchi.mp) • Digital Health Digest (kingsfundmail.org.uk) • Digital Health Networks Newsletter: 20 September 2022 (mailchi.mp) • Your daily news updates from Digital Health (campaign-archive.com) • Your daily news updates from Digital Health (campaign-archive.com) • Your daily news updates from Digital Health (campaign-archive.com) • Home Digital Health
<p>PSNC News / Pharmacy</p>	<ul style="list-style-type: none"> • National Pharmacy Association • Royal Pharmaceutical Society • Medicines Learning Portal • Specialist Pharmacy Service • September 2022 Price Concessions 1st Update (mailchi.mp) • PSNC Newsletter: 16th September (mailchi.mp)
<p>Pulse / GP Online / HSJ / NB Medical</p>	<ul style="list-style-type: none"> • GP Online • HSJ • Pulse Today
<p>Primary Care Update / PCC / PPP</p>	<ul style="list-style-type: none"> • Public Policy Projects News • Primary Care Bulletin

Continuation of News & Views

Health Care Leaders Newsletters	
Kings Fund	<ul style="list-style-type: none"> • The Kings Fund • Digital Health Digest (kingsfundmail.org.uk) • Health Management and Policy Alert: 20 September 2022 (kingsfundmail.org.uk)
World Health Organisation	<ul style="list-style-type: none"> • WHO • OpenWHO
IHCT / CCG / STP / Healthier Futures	<ul style="list-style-type: none"> • Black Country & West Birmingham CCG • Dudley Integrated Health and Care • Home :: Black Country Healthcare NHS Foundation Trust • Issue 11 - Black Country Primary Care Brief (sharepoint.com) • Issue 10 - Black Country Primary Care Brief (sharepoint.com) • Issue 09 - Black Country primary Care Brief (sharepoint.com)
NHSI / NHSE	
University / Student Nurses	
Medisa / Univadis / Geeky Medics / GP Notebook / Medscape	<ul style="list-style-type: none"> • Medisa • Geeky Medics • Medscape Nurses • GP Notebook
Nurse Guidelines	
The Health Foundation	<ul style="list-style-type: none"> • The Health Foundation
The Health Care Leaders Update	<ul style="list-style-type: none"> • Health Care Leader News
Practice Index	
Innovation Agency	<ul style="list-style-type: none"> • Innovation Agency Exchange

<i>Continuation of News & Views</i>	
RCN	<ul style="list-style-type: none"> • RCN • Protected nurse title: ONS lists job terms as 'registered' (rcni.com) • Nurse leadership: a programme for black and ethnic minority staff (rcni.com) • No burden: why we must reframe the view of nursing older people (rcni.com) • Gender in nursing: now is the time to promote this career to men (rcni.com)
Nursing in Practice / Nursing Standard / Independent Nurse	<ul style="list-style-type: none"> • Nursing Times • Practice Nursing - Explore our brand new website • Journal of General Practice Nursing
QNI	<ul style="list-style-type: none"> • QNI • Talk To Us © – The Queen's Nursing Institute (qni.org.uk)
NMC	<ul style="list-style-type: none"> • NMC • Latest updates and an inspirational story (news-nmc.org.uk)
CMO / CNO	
Nice	<ul style="list-style-type: none"> • NICE • How will changes to post-registration standards affect your career? (rcni.com) • Your views are having an impact (news-nmc.org.uk)
RCGP / BMA / The Lancet	<ul style="list-style-type: none"> • The Lancet • British Medical Journal • Royal College of General Practitioners
Midlands Academic Health Science Network	<ul style="list-style-type: none"> • WMAHSN Network
Healthwatch	<ul style="list-style-type: none"> • Healthwatch
Other	<ul style="list-style-type: none"> • Patients Association

Free Training / Webinars / Meetings / CPD

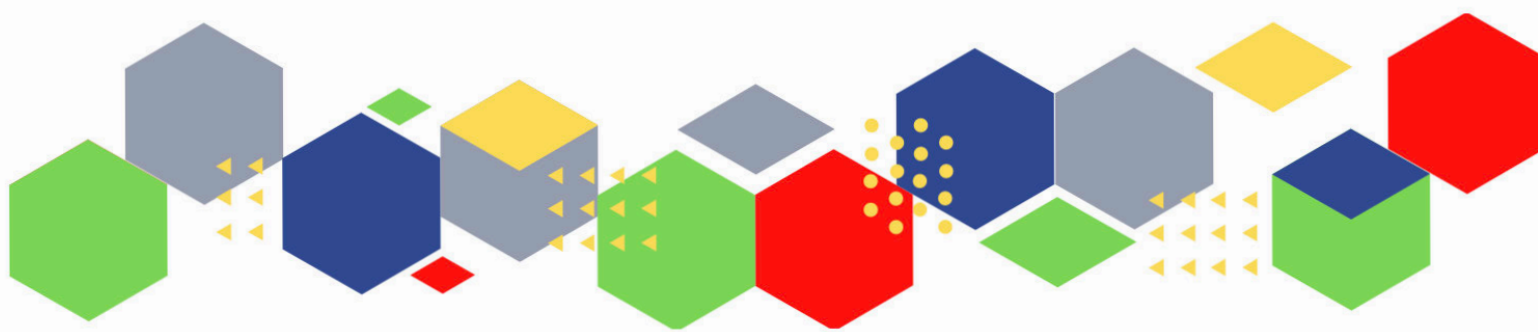
<p>Development / Information and Knowledge</p>	<ul style="list-style-type: none"> • Red Whale Training • Issues & Answers • Issues & Answers - Long Covid Broadcasts • Pain management within pancreatic cancer - Pancreatic Cancer UK • PERT and pancreatic cancer - Pancreatic Cancer UK • Pain management within pancreatic cancer - Pancreatic Cancer UK • Non-surgical treatment options: Chemotherapy and clinical trials - Pancreatic Cancer UK • Non-surgical treatment options: Ablative therapies - Pancreatic Cancer UK • Pancreatic enzyme replacement therapy (PERT) - Q&A - Pancreatic Cancer UK • Northern Ireland Nutritional management in pancreatic disease sessions, November 2022 - Pancreatic Cancer UK • NVEOCT22 - Immunisation & CVD - NIP 365 (nursinginpractice365.uk) • The Nursing Conference 2022 28 Sep, 2022 9:00 am-1:00 pm 29 Sep, 2022 9:00 am-1:00 pm Online Conference (insidegovernment.co.uk) • Online Training Course: Developing and Delivering Effective Education, Health and Care Plans (EHCPs) 02 Nov, 2022 9:30 am-3:00 pm Online (insidegovernment.co.uk) • Home (eventscloud.com) • Health is wealth? REAL Challenge annual lecture - 9 November 2022 (healthfdn.org.uk) • E-learning - PCC (pcc-cic.org.uk) • Don't miss our upcoming webinar: Implementing innovation – how we make real the promise of new technologies (healthfdn.org.uk)
<p>Free to RCN</p>	<ul style="list-style-type: none"> • RCNi events RCNi

Continuation of Free Training / Webinars / Meetings / CPD

MIMMs Learning	
Eventbrite	<ul style="list-style-type: none"> • Cardiovascular Event Tickets • Black Country Integrated Care System (ICS) Development Workshops Tickets, Multiple Dates Eventbrite
e-Learning for Health	
Podcasts	<ul style="list-style-type: none"> • The Nursing Handover Podcast • Nursing Standard Podcasts • Nursing Matters • Welcome to the BJN Podcast • Cynet Health Care Podcast • EBN podcast • This Is Nursing • Teach me, I'm a Nurse • Past Caring • RCGP eLearning podcast • The BMJ Podcast • Primary Care Network podcasts • The Professional Support Unit's Pandemic Podcast • The Next GenCast • How to reduce the risk of skin cancer by NICE Talks (soundcloud.com)
Future Proof Health Training	<ul style="list-style-type: none"> • News & Events
YouTube	<ul style="list-style-type: none"> • NHS England • Black Country Healthcare - YouTube
Blogs/Vlogs	<ul style="list-style-type: none"> • Read the blog (kingsfundmail.org.uk) • Racism in the NHS is rampant: nurses demand action (independentnurse.co.uk) • Archie Battersbee and the limits of law (independentnurse.co.uk)

Continuation of Free Training / Webinars / Meetings / CPD

BCWB Training Hub	
Evidence based care	
Area Bulletins	
Research	<ul style="list-style-type: none">• Science Daily• Multimorbidity / multiple long-term conditions (MLTC)• National Institute for Health and Care Research
Freebies	<ul style="list-style-type: none">• Blue Light Card
Other	



Thank you for reading Future Proof Health's weekly news!

If you missed past issues, please click [here](#) to view them

More information can be found on our website, [here](#)

Don't forget to like us on [Facebook](#) & Follow us on [Twitter](#)

