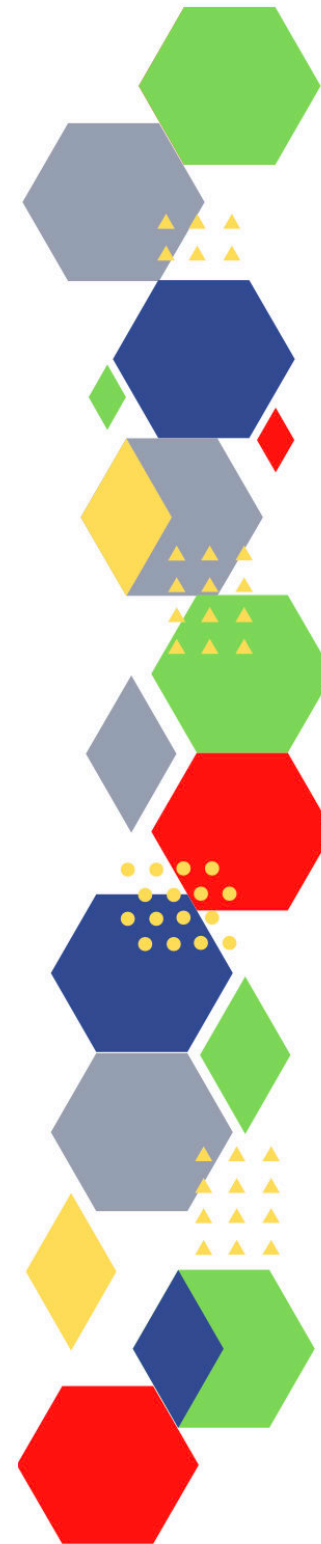


Future Proof Health Presents

Weekly News

23rd September 2021



Communication	
Communication with Patients	<ul style="list-style-type: none"> • Supporting general practice – Administrative errors
Communication within Teams	
People and Personal Development	
Personal / HR & People Development / Leadership	<ul style="list-style-type: none"> • Job Vacancies • Accountability and delegation in practice
Consent	<ul style="list-style-type: none"> • Supporting general practice – Consent • Gillick competency and Fraser guidelines • CONSENT POLICY
Health, Safety & Security	
<ul style="list-style-type: none"> • NPSA • HSE Weekly Bulletin 	
CQC	<ul style="list-style-type: none"> • GP mythbusters • CQC Monitoring approach webinar
Vaccines / Medications / Prescribing	<ul style="list-style-type: none"> • Protocol for ordering, storing and handling vaccines • A Competency Framework for all Prescribers • Non-medical prescribing • The Human Medicines Regulations 2012 • RCN - Non-medical prescribers • Royal Pharmaceutical Society • Standards for prescribing • Clinical Negligence Scheme for General Practice • Specialist Pharmacy Service - Guidance • GP mythbuster 95: Non-medical prescribing • Medicines management (healthcare services) • Staff skills and knowledge (healthcare services) • Practice guidance for physiotherapist supplementary and/or independent prescribers in the safe use of medicines (4th edition) • MEDICINES AND INDEPENDENT PRESCRIBING

Drug / Device Alerts (MHRA)	<ul style="list-style-type: none"> • The use and regulation of pulse oximeters (information for healthcare professionals) • Topical corticosteroids: information on the risk of topical steroid withdrawal reactions • Real World Application of AQbD and analytical procedure life cycle management
Antibiotic steward-ship / Anti-microbial resistance	<ul style="list-style-type: none"> • Respiratory tract infection: immediate vs. delayed antibiotic therapy
Emergency Situations	<ul style="list-style-type: none"> • The updated National Early Warning Score and its use with suspected Sepsis • Resuscitation Council UK
Infection Control / Infection Statics	
Safe Guarding	<ul style="list-style-type: none"> • Female genital mutilation (FGM) • PREVENT • Child protection system in the UK • Safeguarding Adults • Safeguarding children: detailed information • Close to 60,000 girls in England at risk of female genital mutilation • New figures showing safeguarding of vulnerable adults in 2020-21 are published
Practice Policies	<ul style="list-style-type: none"> • Supporting general practice – Medical record keeping
Audit	
Information Governance	<ul style="list-style-type: none"> • Guide to Data Protection • Supporting general practice – Medical record keeping
Quality & Service Improvement	
Quality & Service	<ul style="list-style-type: none"> • The PRSB • General Practice Assessment Questionnaire (GPAQ) • Healthwatch • NHS Five Year Forward View • General Practice Forward View • NMC • Dr Jon Griffiths • Supporting general practice – Medical record keeping

Improvement	
New Roles in General Practice	<ul style="list-style-type: none"> • Standards for nursing associates
Revalidation	<ul style="list-style-type: none"> • Preparing for first-time NMC revalidation - a webinar for nursing associates, supervisors, leads and education facilitators in East and West Midlands.
Personal Practice & Development	
NHS Self Care & Resilience	<ul style="list-style-type: none"> • Wellbeing support line for health and social care workers • Our Frontline • Staff mental health and wellbeing hubs
ICS / PCN	<ul style="list-style-type: none"> • Working together for better lives: case studies • Is Manchester Greater? A New Analysis of NHS Integration • Integrated Care Partnership (ICP) engagement document • Ideas that change health and care
Leadership	
Personalised Care	
Personalised Care / Self Care / Social Prescribing / Health Coaching	<ul style="list-style-type: none"> • Self care forum • Personalised Care Institute • Personalised care • National Academy for Social Prescribing • Regional Leadership for Personalised Care programme
Group consultation	
Working Differently	

Equality & Diversity	
Equality & Diversity	• Public Health Profiles
Inclusion Health	
Poverty / Homelessness	• Crisis
Migrant Health	
Thrive Into Work	
Health Inequalities	
Health & Well-Being	
Health & Well-Being	
Assessment	
Obtaining samples	
QOF/PHOF/DES/LES	
Management of Emergency Situations	
Management of Emergency Situations	• The updated National Early Warning Score and its use with suspected Sepsis
Red Flags	• Supporting general practice – Common pitfalls
Sepsis	<ul style="list-style-type: none"> • Sepsis: recognition, diagnosis and early management • Sepsis guidance implementation advice for adults • Sepsis in Children • Sepsis Trust • RCGP: Sepsis • World Sepsis Day 2021- HEE launches new Sepsis Awareness Resource video
Therapeutic Monitoring	
Syndromic surveillance	

Role Specific	
Cervical Cytology	<ul style="list-style-type: none"> • Guide to the interim assessment
Ear Care	
Wound Management	<ul style="list-style-type: none"> • WOUNDEXPO2021 • Microworld • Wound Care Today 2021
Minor Surgery	<ul style="list-style-type: none"> • Supporting general practice – Consent
Health Promotion / Health Screening	
Health Promotion / Population Health	<ul style="list-style-type: none"> • Better Health • EXi App
Health Screening	
PHE	<ul style="list-style-type: none"> • Knowledge & Library Services • Campaign Resources • Public Health Profiles • Health Publications • Invasive group A streptococcal outbreaks: home healthcare • Weekly national Influenza and COVID-19 surveillance report • Laboratory surveillance of candidaemia in England: 2020
NHS Health Check	<ul style="list-style-type: none"> • NHS Health Check
NOIDS / PHE Surveillance / Syndromic Surveillance	<ul style="list-style-type: none"> • Notifications of infectious diseases (NOIDs)
Addiction/Smoking	<ul style="list-style-type: none"> • Drink Coach • Stoptober 2020 Campaign evaluation

Immunisation / Travel Health

	<ul style="list-style-type: none"> • Vaccinations and infections • Joint Committee on Vaccination and Immunisation • Immunisation against infectious disease • West Midlands Immunisation Service • Immunisation information for Health Care Services within the West Midlands area • Vaccination of individuals with uncertain or incomplete immunisation status • WHO vaccine-preventable diseases: monitoring system. 2020 global summary
Flu	<ul style="list-style-type: none"> • Flu and flu vaccinations • The national influenza immunisation programme 2021 to 2022 • Flu vaccines for the 2021 to 2022 season poster • Appendix C: Flu vaccinator competency assessment tool • Healthcare assistants and flu vaccinations • GP Practice – Flu checklist 2020-2021 • Covid boosters and flu co-administration recommended by regulators • RCGP - FREE Influenza resources
Children	<ul style="list-style-type: none"> • Impact of COVID-19 on routine childhood immunisations: early vaccine coverage data to July 2021 in England
Adults	<ul style="list-style-type: none"> • Immunisation patient group direction (PGD) templates • Shingles immunisation programme: introduction of Shingrix® letter
Vaccine Update	<ul style="list-style-type: none"> • Vaccine update
Travel Health	<ul style="list-style-type: none"> • Travel Health Pro • Fit for Travel • Travel Health • Jane Chiodini • Corona.Help
Covid Vaccine	<ul style="list-style-type: none"> • Young people aged 12 to 15 to be offered a COVID-19 vaccine • British Society for Haematology guidance on vaccine-induced thrombosis • COVID Booster Jab Rollout Begins • Immediate action required for Phase 3 booster vaccinations • Most vulnerable to be offered COVID-19 booster vaccines from next week • COVID-19 vaccine surveillance report Week 37 • NHS begins COVID-19 booster vaccination campaign • Enhanced Service Specification: Phase 3 coronavirus vaccination

Mental Health / Learning Disability / Disability	
Mental Health	<ul style="list-style-type: none"> • Mental Health • Mental Health UK • Mind • Place2b • Rethink Mental Illness • Young Minds • Every Mind Matters • Calm • Headspace • NHS all ages 24/7 mental health crisis lines are available across the country and should be promoted to patients who might need urgent support with their mental health • We Can Talk
Learning Disability	<ul style="list-style-type: none"> • Learning Disabilities • Learning Disability England • Mencap • Bild • Autism • Home For Good: Successful community support for people with a learning disability, a mental health need and autistic people • QOF QI - implementation of 'care of people with learning disabilities' module • NHS appoints national director of learning disability and autism
Disability	<ul style="list-style-type: none"> • Disability Rights UK • Disability Matters

From Cradle to...

<p>Infant Health</p>	<ul style="list-style-type: none"> • Tommys • First Steps Nutrition Trust • Bliss • NHS App - Baby Buddy • NHS App - Peanut
<p>Child Health</p>	<ul style="list-style-type: none"> • Unicef • Health Professional Academy • Premature Babies • Child and Maternal Health • Women and Child First • Child Health Information Services • Place2b • Childhood eczema • Common nasal conditions
<p>Adolescent Health</p>	<ul style="list-style-type: none"> • Adolescent Health Programme • Society for Adolescent Health and Medicine • Young Minds
<p>Trans / Non-binary Health / LGBTQ+</p>	
<p>Mens Health</p>	<ul style="list-style-type: none"> • Mens Health Forum • Mens Health Month • Mens health.org • Mens Health UK • Men and mental health • Men's Mental Health Awareness • Prostate Cancer UK • Orchid Fighting Male Cancer

Women's Health	<ul style="list-style-type: none"> • Womens Health Concern • Well Being of Women • Coppa Feel • Menopause Matters • The Menopause Charity • Royal College of Obstetricians and Gynaecologists - Guidelines • Pelvic Partnership • CRUK - Womens Cancer • Breast Cancer Now • Foundation for Women's Cancer • Eve Appeal • Ovarian.Org • Jo's Trust • Well Spring • VIATRIS HRT TREATMENT NAVIGATOR • Menopause Training
Veterans Health	<ul style="list-style-type: none"> • The first call for help takes courage
The Older Population	<ul style="list-style-type: none"> • BGS
Carers	<ul style="list-style-type: none"> • The Care Provider Alliance • Skills for Care • The Care Workers' Charity • Adult Social Care Update • National Survey of Malnutrition and Nutritional Care in Adults • BUILD BACK BETTER
Complex Needs	
Family Planning & Sexual Health	
Family Planning	Faculty of Sexual and Reproductive Healthcare Education and Training
Reproductive	<ul style="list-style-type: none"> • Tommys
Sexual Health	<ul style="list-style-type: none"> • Sexual and Reproductive Health Profiles • Full annual STIs data for 2020 published
Maternity / Neonate health	

Care of Patients with Long Term Conditions

LTC	
Diabetes & Pre-Diabetes	<ul style="list-style-type: none"> • AZ Medical and Educational Goods and Services in Diabetes • Mumoactive • The mySugr App • Foot Check • Low glycaemic index (GI) diet in type 2 diabetes • Diabetes and mental health: Assessing the impact of anxiety on our patients • HbA1c, glycaemic variability and diabetic retinopathy risk
Respiratory	<ul style="list-style-type: none"> • Spirometry: step by step • ARTP • British Lung Foundation • The Primary Care Respiratory Society • CF transmembrane conductance regulator (CFTR) modulators in cystic fibrosis (CF) • Respiratory tract infection: immediate vs. delayed antibiotic therapy
COPD	<ul style="list-style-type: none"> • Right Breathe
Asthma	<ul style="list-style-type: none"> • FeNO - Fractional exhaled nitric oxide - for the diagnosis and management of Asthma • Asthma UK • Asthma: diagnosis, monitoring and chronic asthma management • GINA 2021: the missing pieces in the childhood asthma puzzle • GINA: Interim Guidance About COVID-19 & Asthma
Hypertension	<ul style="list-style-type: none"> • British Heart Foundation • Blood Pressure UK • Hypertension in adults: diagnosis and management • Hypertension in adults: diagnosis and treatment
CVD/AF	<ul style="list-style-type: none"> • QRISK®3-2018 risk calculator • Charity warns heart surgery waiting times could rise more than 40% by next spring without new funding • Heart Rhythm Alliance • CVD risk assessment and management • Health matters: preventing cardiovascular disease • SGLT2 inhibitors backed for cardiovascular prevention in draft NICE guidance • 'Game-changing' new cholesterol-lowering drug to be given by GPs

Continuation of Long Term Conditions

Heart Failure	<ul style="list-style-type: none"> • British Heart Foundation
Cancer / Oncology	<ul style="list-style-type: none"> • Surviving Thyroid Cancer • Help Us Help You - Lung Cancer Symptoms • Becca Breast Cancer Support App • Breast Cancer Now • MoleCare App • NHS launches world first trial for new cancer test
Chronic Kidney Disease	<ul style="list-style-type: none"> • Kidney.Org • Kidney Quality Improvement Partnership
Liver Disease	<ul style="list-style-type: none"> • British Liver Trust • Liver Research • BRITISH ASSOCIATION FOR THE STUDY OF THE LIVER • LIVERnORTH • LIVER DISEASE AND CIRRHOSIS
Blood Disorders	<ul style="list-style-type: none"> • Blood Cancer • Thalassaemia • ITP • Haemophilia • UK MDS Forum • Save a life. Give plasma. • Diagnosis and management of pernicious anaemia • PERNICIOUS ANAEMIA SOCIETY • British Society for Haematology guidance on vaccine-induced thrombosis
G.I	<ul style="list-style-type: none"> • GIST Cancer UK • HbA1c, glycaemic variability and diabetic retinopathy risk
ENT	
G.U	

Continuation of Long Term Conditions

Neurological Conditions	<ul style="list-style-type: none"> • The Brain Tumour Charity • Vasovagal syncope
Musculoskeletal Conditions	<ul style="list-style-type: none"> • Rheumatology • National Axial Spondyloarthritis Society • Musculoskeletal health • Axial spondyloarthritis: factors associated with fibromyalgia development and recovery • NICE guidance - Ixekizumab for treating axial spondyloarthritis
Endocrine Disorders / Metabolic Disorders	<ul style="list-style-type: none"> • Endocrinology • Turner Syndrome Support Society • Thyroid Eye Disease • British Thyroid Foundation • Thyroid UK • Pituitary • Addisons Disease • Parathyroid UK • The Royal Osteoporosis Society • Metabolic Support UK
Frailty	<ul style="list-style-type: none"> • Recognising frailty • Identifying frailty • CLINICAL FRAILTY SCALE
Dementia	<ul style="list-style-type: none"> • Dementia UK • Understanding dementia • My House of Memories - NHS App • Dementia profile updates

Continuation of Long Term Conditions

Dermatology	<ul style="list-style-type: none"> • British Association of Dermatologists • Eczema • The British Skin Foundation • Acne vulgaris: management • The Primary Care Dermatology Society • Acne.org • Allergy UK • Urticaria • Hives • Sunburn • Causes of cancer and reducing your risk • What is Rosacea? • Rosecea • Herpes.org • Shingles • Fungal Skin Infection - Foot • The Psoriasis Association • Psoriasis • Melanoma • Skin Health Information • British Association of Plastic Reconstructive and Aesthetic Surgeons • Warts and verrucae
Allergy / Auto-immune / Genetic Conditions	<ul style="list-style-type: none"> • Allergy UK • Rheumatology • Addisons Disease
Obesity	<ul style="list-style-type: none"> • Obesity UK
Pain Management	<ul style="list-style-type: none"> • Pain Concern

<i>Continuation of Long Term Conditions</i>	
Multi-Morbidity	<ul style="list-style-type: none"> • Multimorbidity • Multimorbidity / multiple long-term conditions (MLTC)
Minor Illness / First Contact Assessment	
Other	<ul style="list-style-type: none"> • Ultra Rare Disease Disorders And Disabilities Foundation • Atlas of Variation • MyCognition Home - NHS App
End of Life Care	
End of Life Care	<ul style="list-style-type: none"> • Palliative and End of Life Care Profiles
Covid-19	
Covid-19	<ul style="list-style-type: none"> • Covid Live • Coronavirus Statistics • Novel coronavirus (COVID-19) standard operating procedure: COVID Oximetry @home • A higher D-dimer threshold for predicting pulmonary embolism in patients with COVID-19: a retrospective study • Prime Minister to set out autumn and winter plan for Covid
Long Covid	<ul style="list-style-type: none"> • Supporting your recovery after COVID-19 • Enhanced service specification: Long COVID 2021/22 • Long-Haul COVID Brings Long Road to Recovery
Covid Response / Recovery	

News & Views	
Digital News / Remote Consultations	<ul style="list-style-type: none"> • Digital Health News Webinars • Digital Health News • The Digital Health Autumn Leadership Summit / 7-8 October 2021
PSNC News	<ul style="list-style-type: none"> • 14th September • 17th September • 21st September • September 2021 Price Concession
60 Second GP / Pulse / GP Online / HSJ	<ul style="list-style-type: none"> • 60 Second GP • GP Online • HSJ • Pulse Today
Primary Care Update / PCC	<ul style="list-style-type: none"> • Primary Care Bulletin
Kings Fund	Weekly News / Health Management and Policy Alert / Health and Well Being Bulletin / Digital Health Digest / Events Update
World Health Organisation	<ul style="list-style-type: none"> • WHO
Midlands Academic Health Science Network	
Healthwatch	<ul style="list-style-type: none"> • Healthwatch
Black Country Bulletins	

<i>Continuation News & Views</i>	
IHCT / CCG / STP / Healthier Futures	<ul style="list-style-type: none"> • Healthier Futures • Black Country & West Birmingham CCG • Dudley Integrated Health and Care
University / Student Nurses	
Medisa / Univadis / Geeky Medics / GP Notebook / Medscape	<ul style="list-style-type: none"> • Univadis Newsletter • Univadis Nurses Headlines • Medisa • Geeky Medics • Medscape Nurses
MIMS	<ul style="list-style-type: none"> • Latest MIMS news
The Health Foundation	<ul style="list-style-type: none"> • The Health Foundation • Webinar: Levelling up health – a national strategy driven by local government
The Health Care Leaders Update	<ul style="list-style-type: none"> • Health Care Leader News
PHE	
Innovation Agency	<ul style="list-style-type: none"> • Innovation Agency Exchange
RCN	<ul style="list-style-type: none"> • RCN • World Patient Safety Day must be 'wake-up call' for ministers to tackle nursing workforce crisis • Opinion - My long COVID experience • Action - 'A lifeline for staff' • RCNi Newsletter • RCN Foundation • Organising for Change

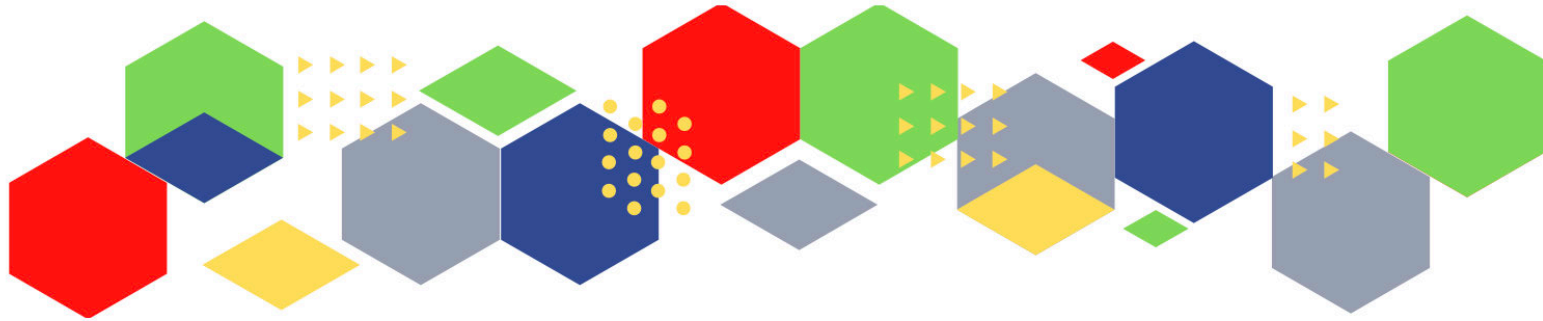
Continuation News & Views

Nursing in Practice / Nursing Standard / Independent Nurse	<ul style="list-style-type: none"> • Nursing in Practice Bulletin • Nursing in Practice Clinical • Nursing in Practice - Community Bulletin • Practice Nursing Newsletter • GPN Bulletin
QNI	<ul style="list-style-type: none"> • QNI
NMC	<ul style="list-style-type: none"> • NMC
CMO / CNO	<ul style="list-style-type: none"> • Social care reform and what it means for our workforce
Nice	<ul style="list-style-type: none"> • NICE
RCGP / BMA / The Lancet	<ul style="list-style-type: none"> • The Lancet • British Medical Journal • Royal College of General Practitioners • QOF QI hub • Sexism in medicine • BMA Update
Midlands Academic Health Science Network	<ul style="list-style-type: none"> • WMAHSN Network

Free Training / Webinars / Meetings / CPD

<p>Development / Information and Knowledge</p>	<ul style="list-style-type: none"> • RCN Events - West Midlands • 16th November - MIMS Learning Live • THE BEST PRACTICE SHOW – 13-14 October 2021 • 28th September - QOF QI - implementation of the 'early cancer diagnosis' module • Inaugural Broadcasts 2021 • 20th October - System Leader: Integrating additional roles in primary care • 24th March 2022 - RCN Clinical Research Nursing Conference 2022 • Menopause Training • 12th October - Clinicians and Practitioners: Emerging video group clinics in cancer care • RCGP FREE Influenza resources
<p>Podcasts</p>	<ul style="list-style-type: none"> • The Nursing Handover Podcast • Nursing Standard Podcasts • What Makes a Nurse? • The MedicsPro Podcast • Nursing Matters • Welcome to the BJN Podcast • Why we care • EBN podcast • This Is Nursing • Maroon Mindset • Teach me, I'm a Nurse • Past Caring • RCGP eLearning podcast • The BMJ Podcast • Primary Care Network podcasts • The Professional Support Unit's Pandemic Podcast

<i>Continuation of Free Training / Webinars / Meetings / CPD</i>	
Blogs	<ul style="list-style-type: none">• Pulse oximetry in babies and small children - Essential 'fifth vital sign' or potentially inaccurate and poorly validated technology?
Area Bulletins	<ul style="list-style-type: none">• Dudley
BCWB Training Hub	<ul style="list-style-type: none">• Black Country and West Birmingham Training Hub
Research	<ul style="list-style-type: none">• Science Daily• UK Research and Innovation
Freebies	<ul style="list-style-type: none">• Blue Light Card
Other	<ul style="list-style-type: none">• G20 Ministerial Health Declaration published



Thank you for reading Future Proof Health's weekly news!
If you missed past issues, please click [here](#) to view them

More information can be found on our website, [here](#)

Don't forget to like us on [Facebook](#) & Follow us on [Twitter](#)

