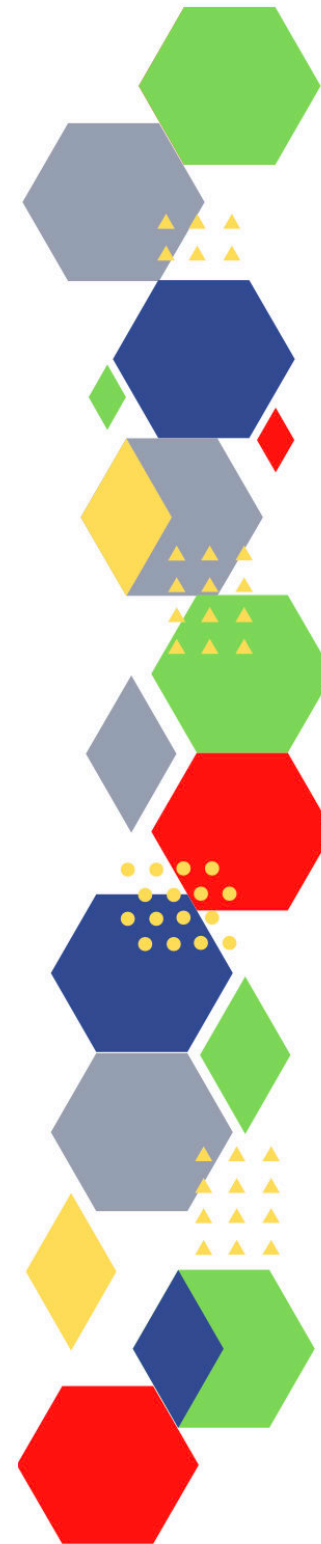


Future Proof Health Presents

Weekly News

2nd September 2021



Communication	
Communication with Patients	
Communication within Teams	
People and Personal Development	
Personal / HR & People Development / Leadership	<ul style="list-style-type: none"> • Job Vacancies • Accountability and delegation in practice
Health, Safety & Security	
• NPSA	
CQC	<ul style="list-style-type: none"> • CORRECTION CQC update for adult social care providers • News from the Care Quality Commission: August 2021 • CQC update for primary medical and dental services
Vaccines & Medications	• Protocol for ordering, storing and handling vaccines
Drug / Device Alerts (MHRA)	
Emergency Situations	<ul style="list-style-type: none"> • The updated National Early Warning Score and its use with suspected Sepsis • Resuscitation Council UK
Infection Control	• MARS second pilot report in summary
Safe Guarding	<ul style="list-style-type: none"> • Female genital mutilation (FGM) • PREVENT • Child protection system in the UK • Safeguarding Adults • Safeguarding children: detailed information
Practice Policies	
Audit	
Information Governance	<ul style="list-style-type: none"> • Guide to Data Protection • Policy statement on information security and governance

Quality & Service Improvement	
Quality & Service	<ul style="list-style-type: none"> • The PRSB • General Practice Assessment Questionnaire (GPAQ) • Healthwatch • NHS Five Year Forward View • General Practice Forward View • NMC
Improvement	
New Roles in General Practice	<ul style="list-style-type: none"> • Standards for nursing associates
Personal Practice & Development	
NHS Self Care & Resilience	<ul style="list-style-type: none"> • Wellbeing support line for health and social care workers • Our Frontline
ICS / PCN	<ul style="list-style-type: none"> • Integrated care systems and place-based partnerships six months on (virtual conference) • Primary Care Networks – plans for 2021/22 and 2022/23 • Guidance on the functions and governance of the integrated care board, and the model constitution
Leadership	
Personalised Care	
Personalised Care / Self Care	<ul style="list-style-type: none"> • Self care forum • Personalised Care Institute
Social Prescribing / Health Coaching	<ul style="list-style-type: none"> • Personalised care • National Academy for Social Prescribing
Group consultation	<ul style="list-style-type: none"> • Group Consultation Webinars

Equality & Diversity	
Equality & Diversity	• Public Health Profiles
Inclusion Health	
Poverty / Homelessness	
Health Inequalities	• Ideas that change health and care
Migrant Health	
Management of Emergency Situations	
Management of Emergency Situations	• The updated National Early Warning Score and its use with suspected Sepsis
Red Flags	
Sepsis	<ul style="list-style-type: none"> • Sepsis: recognition, diagnosis and early management • Sepsis guidance implementation advice for adults • Sepsis in Children • Sepsis Trust • RCGP: Sepsis
Therapeutic Monitoring	
Syndromic surveillance	<ul style="list-style-type: none"> • Syndromic surveillance: systems and analyses • National norovirus and rotavirus bulletin: management information
Health & Well-Being	
Health & Well-Being	
Assessment	
Obtaining samples	
QOF/PHOF	• Public Health Outcomes Framework: August 2021 data update

Role Specific	
Cervical Cytology	<ul style="list-style-type: none"> • Guide to the interim assessment • GP mythbuster 104: Cervical screening
Ear Care	
Wound Management	<ul style="list-style-type: none"> • WOUNDEXPO2021 • Wound Care Today 2021
Minor Surgery	
Health Promotion / Health Screening	
Health Promotion / Population Health	<ul style="list-style-type: none"> • Better Health • EXi App • Physical activity: understanding and addressing inequalities
Health Screening	
PHE	<ul style="list-style-type: none"> • Knowledge & Library Services • Campaign Resources • Public Health Profiles • Health Publications • Public health specialist capacity • Apprenticeships that support public health careers
NHS Health Check	<ul style="list-style-type: none"> • NHS Health Check
NOIDS	<ul style="list-style-type: none"> • Notifications of infectious diseases (NOIDs) • Laboratory confirmed cases of measles, rubella and mumps, England: April to June 2021
Addiction/Smoking	

Immunisation / Travel Health

- [Vaccinations and infections](#)
- [Joint Committee on Vaccination and Immunisation](#)
- [Immunisation against infectious disease](#)
- [West Midlands Immunisation Service](#)
- [Immunisation information for Health Care Services within the West Midlands area](#)

Flu	
Children	
Adults	<ul style="list-style-type: none"> • Immunisation patient group direction (PGD) templates Shingles immunisation programme: introduction of Shingrix® letter • Pertussis vaccination programme for pregnant women update: Vaccine coverage in England, April to June 2021
Vaccine Update	<ul style="list-style-type: none"> • Vaccine update
Travel Health	<ul style="list-style-type: none"> • Travel Health Pro • Fit for Travel • Travel Health • Jane Chiodini
Covid Vaccine	<ul style="list-style-type: none"> • COVID-19 vaccination: resources for children and young people • COVID Vaccine Effectiveness 'Waning Over Time' • COVID-19 vaccine surveillance reports • Blood Clot Risks 'Lower With COVID Vaccines Than From Infection' • COVID-19 vaccine surveillance report Week 34

Family Planning & Sexual Health

Family Planning

Reproductive

- [Tommys](#)
- [Life-saving world-first NHS test for pregnant women](#)

Sexual Health

Mental Health / Learning Disability / Disability

Mental Health

- [Mental Health](#)
- [Mental Health UK](#)
- [Mind](#)
- [Place2b](#)
- [Rethink Mental Illness](#)
- [Young Minds](#)
- [Free Members' Webinar: The mental health digital playbook webinar](#)
- [Covid-19 Loneliness Fund](#)
- [Research report August 2021 Untapped? Understanding the mental health clinical support workforce](#)
- [Severe mental illness \(SMI\) profile: August 2021 update](#)

Learning Disability

- [Learning Disabilities](#)
- [Learning Disability England](#)
- [Mencap](#)
- [Bild](#)
- [Autism](#)
- [Learning disability newsletter: Issue 13](#)

Disability

- [Disability Rights UK](#)
- [Disability Matters](#)

From Cradle to...

Infant Health	<ul style="list-style-type: none"> • Tommys • First Steps Nutrition Trust • Bliss
Child Health	<ul style="list-style-type: none"> • Unicef • Health Professional Academy • Premature Babies • Child and Maternal Health • Women and Child First • Child Health Information Services • Place2b • Childhood eczema • Gastro-oesophageal reflux disease (GORD) in infancy • CAMHS Information • The health effects of universal early childhood interventions: evidence from Sure Start • Lifesaving hepatitis C treatment for children on the NHS • Positive healthcare experience for babies, children and young people essential to their wellbeing
Adolescent Health	<ul style="list-style-type: none"> • Adolescent Health Programme • Society for Adolescent Health and Medicine • Young Minds • Young COVID patients share stories to urge others to get jabbed
Mens Health	<ul style="list-style-type: none"> • Prostate Cancer UK Newsletter • 'Routine' Use of Focal Therapy for Prostate Cancer in Next 5 Years

Women's Health	<ul style="list-style-type: none"> • Well Spring • HRT and menopause in the 21st century • NICE publishes final guideline advising on care throughout a woman's pregnancy
Trans / Non-binary Health / LGBTQ+	<ul style="list-style-type: none"> • Pride in the NHS Week and NHS Virtual Pride
The Older Population	<ul style="list-style-type: none"> • BGS • 'Right time, right place: Urgent community-based care for older people' – new BGS report launched
Carers	<ul style="list-style-type: none"> • Skills For Care • Enhanced Health in Care Homes: primary care networks and community health • Admission and care of residents in a care home during COVID-19 • Visiting arrangements in care homes • Arrangements for visiting out of the care home • Supported living services during coronavirus (COVID-19) • Vaccination of people working or deployed in care homes: operational guidance • Better Care Fund increased to support health and care integration • Supporting excellence in infection prevention and control behaviours • Every Action Counts – Infection Prevention and Control for Adult Social Care • Workforce wellbeing resource finder
Complex Needs	

Care of Patients with Long Term Conditions

LTC	
Diabetes & Pre-Diabetes	<ul style="list-style-type: none"> • AZ Medical and Educational Goods and Services in Diabetes • New Horizons in Diabetes Management in Primary Care
Respiratory	<ul style="list-style-type: none"> • Spirometry: step by step • ARTP • British Lung Foundation • The Primary Care Respiratory Society • Tuberculosis in England: quarterly reports • Post-American Thoracic Society (ATS) Congress update 2021
COPD	<ul style="list-style-type: none"> • Right Breathe
Asthma	<ul style="list-style-type: none"> • FeNO - Fractional exhaled nitric oxide - for the diagnosis and management of Asthma • Asthma UK • Asthma: diagnosis, monitoring and chronic asthma management • GINA 2021: the missing pieces in the childhood asthma puzzle • GINA: Interim Guidance About COVID-19 & Asthma • Diagnosis and management: Asthma • Short-Acting Beta Agonist Overuse 'a Global Public Health Issue'

Continuation of Long Term Conditions

Hypertension	<ul style="list-style-type: none"> • British Heart Foundation • Blood Pressure UK • Hypertension in adults: diagnosis and management • Hypertension in adults: diagnosis and treatment • Irbesartan batches recalled over contamination
CVD/AF	<ul style="list-style-type: none"> • QRISK®3-2018 risk calculator • Charity warns heart surgery waiting times could rise more than 40% by next spring without new funding • Heart Rhythm Alliance • CVD risk assessment and management • Health matters: preventing cardiovascular disease • Nationwide roll-out of NHS high street heart checks to save thousands of lives • Chronic Conditions - Resources
Heart Failure	<ul style="list-style-type: none"> • British Heat Foundation
Cancer / Oncology	<ul style="list-style-type: none"> • Surviving Thyroid Cancer • Help Us Help You - Lung Cancer Symptoms • Becca Breast Cancer Support App • Breast Cancer Now • MoleCare App • Pancreatic Cancer UK Resources
Chronic Kidney Disease	<ul style="list-style-type: none"> • FORXIGA in Chronic Kidney Disease

Continuation of Long Term Conditions

Liver Disease	<ul style="list-style-type: none"> • British Liver Trust
Neurological Conditions	<ul style="list-style-type: none"> • The Brain Tumour Charity
Musculoskeletal Conditions	<ul style="list-style-type: none"> • Rheumatology • National Axial Spondyloarthritis Society • Hip OA: What's the Best First Option?
Blood Disorders	<ul style="list-style-type: none"> • Blood Cancer • Thalassaemia • ITP • Haemophilia • UK MDS Forum • Save a life. Give plasma. • Diagnosis and management of pernicious anaemia • PERNICIOUS ANAEMIA SOCIETY
G.I	<ul style="list-style-type: none"> • Gastro-oesophageal reflux disease (GORD) in infancy
ENT	
G.U	

Continuation of Long Term Conditions

<p>Endocrine Disorders / Metabolic Disorders</p>	<ul style="list-style-type: none"> • Endocrinology • Turner Syndrome Support Society • Thyroid Eye Disease • British Thyroid Foundation • Thyroid UK • Pituitary • Addisons Disease • Parathyroid UK • The Royal Osteoporosis Society • Metabolic Support UK • Diagnosing and managing Addison's disease in primary care • Conn's syndrome
<p>Frailty</p>	<ul style="list-style-type: none"> • Recognising frailty • Identifying frailty • CLINICAL FRAILTY SCALE
<p>Dementia</p>	<ul style="list-style-type: none"> • Dementia UK • Understanding dementia • Artificial intelligence brain scan trial will help clinicians diagnose dementia in a day • Dementia profile updates

Continuation of Long Term Conditions

Dermatology

- [British Association of Dermatologists](#)
- [Eczema](#)
- [The British Skin Foundation](#)
- [Acne vulgaris: management](#)
- [The Primary Care Dermatology Society](#)
- [Acne.org](#)
- [Allergy UK](#)
- [Urticaria](#)
- [Hives](#)
- [Sunburn](#)
- [Causes of cancer and reducing your risk](#)
- [What is Rosacea?](#)
- [Rosecea](#)
- [Herpes.org](#)
- [Shingles](#)
- [Fungal Skin Infection - Foot](#)
- [The Psoriasis Association](#)
- [Psoriasis](#)
- [Melanoma](#)
- [Skin Health Information](#)
- [British Association of Plastic Reconstructive and Aesthetic Surgeons](#)
- [Warts and verrucae](#)

Continuation of Long Term Conditions

Allergy / Auto-immune / Genetic Conditions	<ul style="list-style-type: none"> • Allergy UK • Rheumatology • Addisons Disease • Cystinosis diagnosis and co-ordination of management
Obesity	<ul style="list-style-type: none"> • Obesity UK • Adult Obesity - Partner Toolkit
Pain Management	<ul style="list-style-type: none"> • Pain Concern
Multi-Morbidity	<ul style="list-style-type: none"> • Multimorbidity • Multimorbidity / multiple long-term conditions (MLTC)
Minor Illness / First Contact	<ul style="list-style-type: none"> • NHS 111 Online - August 2021 Resources
Assessment	
Other	<ul style="list-style-type: none"> • Ultra Rare Disease Disorders And Disabilities Foundation • Atlas of Variation

End of Life Care	
End of Life Care	<ul style="list-style-type: none"> • Hospice UK • GP mythbuster 105: Do not attempt cardiopulmonary resuscitation (DNACPR)
Covid-19	
Covid-19	<ul style="list-style-type: none"> • Covid Live • Coronavirus Statistics • Self-isolation removed for double-jabbed close contacts from 16 August • COVID-19 admission risk tools should include multiethnic age structures, multimorbidity and deprivation metrics for air pollution, household overcrowding, housing quality and adult skills • UK COVID-19 Round-up: Monoclonal Antibody Approved, Jabs Saved 'Nearly 100,000 Lives' • New study to test third COVID-19 vaccine for people with weakened immune systems • Government launches UK-wide antibody surveillance programme • How to look after yourself at home if you have coronavirus (COVID-19) • COVID-19 mental health and wellbeing surveillance: report • Excess mortality in England: weekly reports • Covid-19: Risks of severe illness in children shown to be very low • National flu and COVID-19 surveillance reports: 2021 to 2022 season • Public health impact of mass gatherings • SARS-CoV-2 variants of concern and variants under investigation in England Technical briefing 21 • Weekly national Influenza and COVID-19 surveillance report Week 34 report (up to week 33 data) 26 August 2021
Long Covid	<ul style="list-style-type: none"> • Supporting your recovery after COVID-19 • Young COVID patients share stories to urge others to get jabbed

News & Views	
Digital News / Remote Consultations	<ul style="list-style-type: none"> • Digital Health News Webinars • Digital Health News • The Digital Health Autumn Leadership Summit • COVID-19 and the digital divide
PSNC News	<ul style="list-style-type: none"> • 26th August • 27th August • 31st August • 1st September
60 Second GP / Pulse / GP Online / HSJ	<ul style="list-style-type: none"> • 60 Second GP • GP Online • HSJ • Pulse Today
Primary Care Update / PCC	<ul style="list-style-type: none"> • Primary Care Bulletin
Kings Fund	Weekly News / Health Management and Policy Alert / Health and Well Being Bulletin / Digital Health Digest / Events Update
World Health Organisation	<ul style="list-style-type: none"> • WHO
Midlands Academic Health Science Network	
Healthwatch	<ul style="list-style-type: none"> • Healthwatch
Black Country Bulletins	

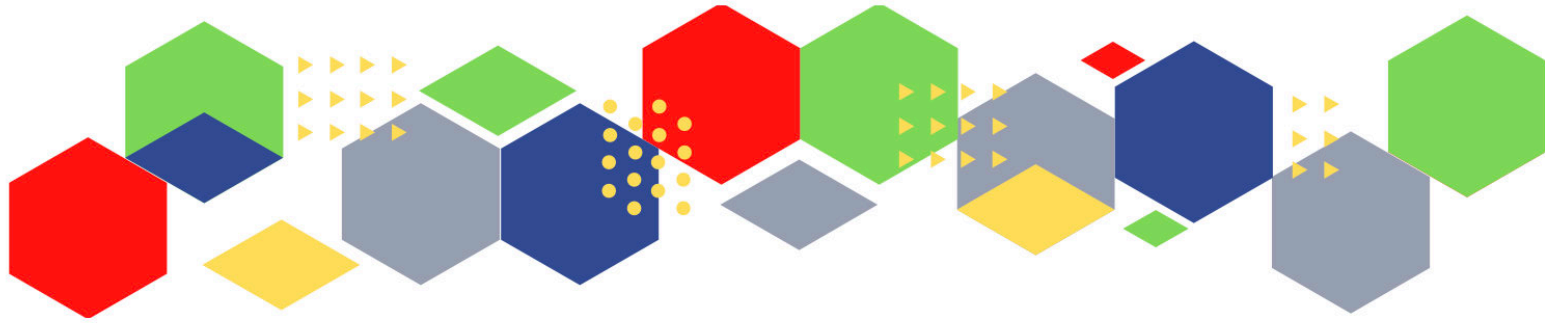
Continuation News & Views

IHCT / CCG / STP / Healthier Futures	<ul style="list-style-type: none"> • Healthier Futures • Black Country & West Birmingham CCG • Dudley Integrated Health and Care
University / Student Nurses	
Medisa / Univadis / Geeky Medics / GP Notebook / Medscape	<ul style="list-style-type: none"> • Univadis Newsletter • Medisa • Geeky Medics • Medscape Nurses • Medscape Oncology • Sexism 'Widespread' in Medicine: BMA Survey
MIMS	<ul style="list-style-type: none"> • Latest MIMS news
The Health Foundation	<ul style="list-style-type: none"> • The Health Foundation
The Health Care Leaders Update	<ul style="list-style-type: none"> • Health Care Leader News
PHE	
Innovation Agency	<ul style="list-style-type: none"> • Innovation Agency Exchange
RCN	<ul style="list-style-type: none"> • RCN+I • RCN Events • RCN • Summer of Action • Racism is a wound • ‘We have a duty of care to ourselves’ • Get your apps together

Continuation News & Views

Nursing in Practice / Nursing Standard / Independent Nurse	<ul style="list-style-type: none"> • Nursing in Practice Clinical • Nursing in Practice Bulletin • Practice Nursing Newsletter • Independent News • GPN Bulletin
QNI	<ul style="list-style-type: none"> • QNI • QNI Annual Conference 2021 • International Recruitment to the Community
NMC	<ul style="list-style-type: none"> • NMC
CNO	<ul style="list-style-type: none"> • Message from the Chief Medical Officer • CMO Update
Nice	<ul style="list-style-type: none"> • NICE • NICE News August • Venous thromboembolism in adults
RCGP / BMA / The Lancet	<ul style="list-style-type: none"> • The Lancet • British Medical Journal • Royal College of General Practitioners • QOF QI hub
Midlands Academic Health Science Network	<ul style="list-style-type: none"> • WMAHSN Network • Wessex Academic Health Science Network Funding Newsletter • August News Update

Free Training / Webinars / Meetings / CPD	
Development / Information and Knowledge	<ul style="list-style-type: none"> • RCN Events - West Midlands • MIMS Learning Live • THE BEST PRACTICE SHOW – 13-14 October 2021 • FREE Cancer Screening Webinar • Wound Expo • QOF QI - implementation of the 'early cancer diagnosis' module • Continual Professional Development • Virtual Conference 2021 • Inaugural Broadcasts 2021
Area Bulletins	<ul style="list-style-type: none"> • Dudley • Sandwell • Wolverhampton
BCWB Training Hub	<ul style="list-style-type: none"> • Black Country and West Birmingham Training Hub
Research	<ul style="list-style-type: none"> • Science Daily • UK Research and Innovation
Freebies	<ul style="list-style-type: none"> • Blue Light Card



Thank you for reading Future Proof Health's weekly news!
If you missed past issues, please click [here](#) to view them

More information can be found on our website, [here](#)

Don't forget to like us on [Facebook](#) & Follow us on [Twitter](#)

