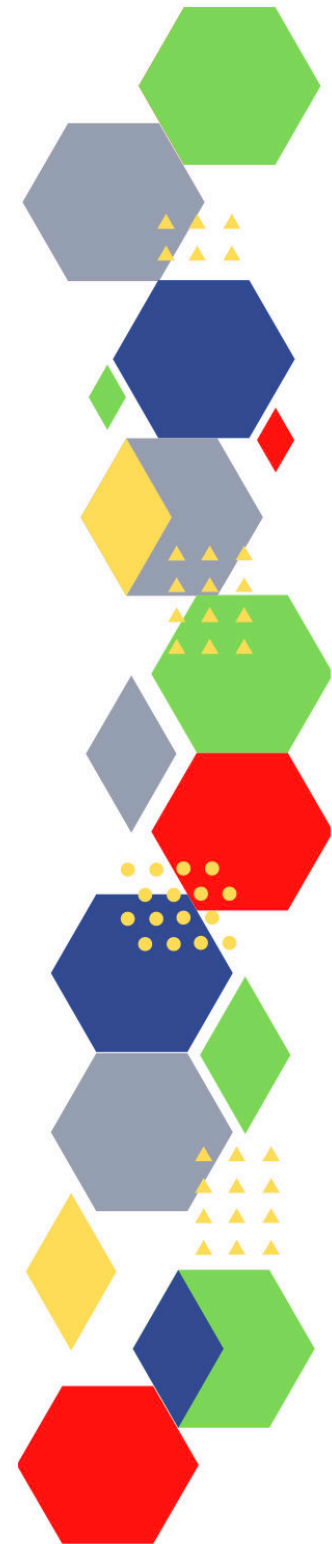


Future Proof Health Presents

Weekly News

21st October 2021



Communication	
Communication with Patients	
Communication within Teams	
Consent	<ul style="list-style-type: none"> • Gillick competency and Fraser guidelines • CONSENT POLICY • ReSPECT for healthcare professionals
People and Personal Development	
Personal / HR & People Development / Leadership	<ul style="list-style-type: none"> • Accountability and delegation in practice
Health, Safety & Security	
	<ul style="list-style-type: none"> • NPSA • Control of Substances Hazardous to Health (COSHH) • HSE Weekly Bulletin • Syndromic surveillance: systems and analyses
Gov UK - Health Security	<ul style="list-style-type: none"> • UK Health Security Agency: Addressing the impact of health threats on the nation
CQC	<ul style="list-style-type: none"> • GP mythbusters • Examples of outstanding practice for GPs • CQC update for adult social care providers
Vaccines / Medications / Prescribing	<ul style="list-style-type: none"> • Protocol for ordering, storing and handling vaccines • A Competency Framework for all Prescribers • Non-medical prescribing • The Human Medicines Regulations 2012 • RCN - Non-medical prescribers • Royal Pharmaceutical Society • Standards for prescribing • Clinical Negligence Scheme for General Practice • Specialist Pharmacy Service - Guidance

Drug / Device Alerts (MHRA)	<ul style="list-style-type: none"> • Launching BIA-MHRA Joint Conference 2021: Register today - 8th December 2021 • Letters and medicine recalls sent to healthcare professionals in September 2021
Antibiotic steward-ship / Anti-microbial resistance	
Emergency Situations	<ul style="list-style-type: none"> • The updated National Early Warning Score and its use with suspected Sepsis • Resuscitation Council UK
Infection Control / Infection Statics	<ul style="list-style-type: none"> • Extending free PPE to the health and care sector
Safe Guarding	<ul style="list-style-type: none"> • Female genital mutilation (FGM) • PREVENT • Child protection system in the UK • Safeguarding Adults • Safeguarding children: detailed information
Practice Policies	
Audit	
Information Governance	<ul style="list-style-type: none"> • Guide to Data Protection • Supporting general practice – Medical record keeping
Quality & Service Improvement	
Quality, Service & Improvement	<ul style="list-style-type: none"> • The PRSB • General Practice Assessment Questionnaire (GPAQ) • Healthwatch • NHS Five Year Forward View • General Practice Forward View • NMC • Dr Jon Griffiths • NHS Confed • Proactive Care Bulletin • 40 community diagnostic centres launching across England • Our plan for improving access for patients and supporting general practice • NHS COVID Pass winter 2021 campaign • Myth-busting: GP referrals to the NHS Community Pharmacist Consultation Service (CPCS) (England) • NHS System Oversight Framework 2021/22

New Roles in General Practice	<ul style="list-style-type: none"> • Standards for nursing associates • GP mythbuster 57: Health Care Assistants in General Practice
Revalidation	
Personal Practice & Development	
Practice Management	<ul style="list-style-type: none"> • Institute of General Practice Management • Practice Index • Workforce Planning Template • The National Health Service (General Medical Services Contracts and Personal Medical Services Agreements) (Amendment) (No. 2) Regulations 2021
NHS Self Care & Resilience	<ul style="list-style-type: none"> • Samaritans • Mental Health at work • Calm • Supporting our NHS people
ICS / PCN	<ul style="list-style-type: none"> • Solving the puzzle: Delivering on the promise of integration in health and care
Leadership	<ul style="list-style-type: none"> • Leadership Academy
Personalised Care	
Personalised Care / Self Care / Social Prescribing / Health Coaching	<ul style="list-style-type: none"> • Self Care forum • Personalised Care Institute • Personalised care • Social Prescribing Academy • Self Care Forum - Self Care Week • Self Care Week Resources
Group consultation	
Working Differently	

Equality & Diversity	
Equality & Diversity	<ul style="list-style-type: none"> • Public Health Profiles
Inclusion Health	<ul style="list-style-type: none"> • Health Creation Academic Network
Poverty / Homelessness	<ul style="list-style-type: none"> • Crisis • Fund to help end cycle of homelessness and hospital readmissions
Thrive Into Work	<ul style="list-style-type: none"> • Thrive into Work • Thrive into Work Referral form
Health Inequalities	<ul style="list-style-type: none"> • Addressing the National Syndemic: Place-based problems and solutions to UK health inequality • Tackling health inequalities must be a fundamental priority for the NHS • Webinar: Systems science in public health: turning thought into action
Health & Well-Being	
Health & Well-Being	
Assessment	
Obtaining samples	<ul style="list-style-type: none"> • Lab Tests Online • Becton Dickinson blood specimen collection - supply disruption
QOF/PHOF/DES/LES	
Role Specific	
Cervical Cytology	<ul style="list-style-type: none"> • Guide to the interim assessment • British Association for Cytopathology • Lab Tests Online
Ear Care	<ul style="list-style-type: none"> • Ear Care Centre • RNID
Wound Management	<ul style="list-style-type: none"> • WOUNDEXPO2021 • Microworld • Wounds Week - 6th-10th December
Minor Surgery	<ul style="list-style-type: none"> • Supporting general practice – Consent

Management of Emergency Situations	
Management of Emergency Situations	<ul style="list-style-type: none"> • The updated National Early Warning Score and its use with suspected Sepsis
111	
Red Flags	<ul style="list-style-type: none"> • Supporting general practice – Common pitfalls • 'Red Flag' Cancer Symptoms Often Not Urgently Referred
Sepsis	<ul style="list-style-type: none"> • Sepsis: recognition, diagnosis and early management • Sepsis guidance implementation advice for adults • Sepsis in Children • Sepsis Trust • RCGP: Sepsis • World Sepsis Day 2021- HEE launches new Sepsis Awareness Resource video
Therapeutic Monitoring	

Health Promotion / Health Screening	
Health Promotion / Population Health	<ul style="list-style-type: none"> • Better Health • EXi App • Physical Activity for the Prevention and Management of Long-Term Conditions
Health Screening	<ul style="list-style-type: none"> • PHE Screening
PHE/OHID	<ul style="list-style-type: none"> • Knowledge & Library Services • Campaign Resources • Public Health Profiles • Health Publications • Health Profile for England 2021 • Why Greater Investment in the Public Health Grant Should be a Priority • How can public health nurses help deliver the Healthy Child Programme this winter?
NHS Health Check	<ul style="list-style-type: none"> • NHS Health Check
NOIDS / PHE Surveillance / Syndromic Surveillance	<ul style="list-style-type: none"> • Notifications of infectious diseases (NOIDs) • Syndromic surveillance: systems and analyses

Continuation of Health Promotion / Health Screening

Addiction/Smoking

- [Drink Coach](#)
- [Stop smoking interventions and services](#)

Immunisation / Travel Health

- [Vaccinations and infections](#)
- [Joint Committee on Vaccination and Immunisation](#)
- [Immunisation against infectious disease](#)
- [West Midlands Immunisation Service](#)
- [Immunisation information for Health Care Services within the West Midlands area](#)
- [Vaccination of individuals with uncertain or incomplete immunisation status](#)
- [WHO vaccine-preventable diseases: monitoring system. 2020 global summary](#)
- [The Foundations of Immunization: What, Who, When and Why?](#)
- [Winter Vaccination - Prime phase: Social Media content calendar and assets - 2021](#)

Flu

- [Flu and flu vaccinations](#)
- [The national influenza immunisation programme 2021 to 2022](#)
- [Flu vaccines for the 2021 to 2022 season poster](#)
- [Appendix C: Flu vaccinator competency assessment tool](#)
- [Healthcare assistants and flu vaccinations](#)
- [Flu Campaign Resources 2021/22](#)
- [Updates to the Flu Immunisation elearning programme for the 2021/22 flu season](#)
- [Flu Immunisation programme - elearning](#)
- [Foundation elearning programme update September 2021](#)

<i>Continuation of Immunisation / Travel Health</i>	
Covid Vaccine	<ul style="list-style-type: none"> • Greenbook COVID-19 chapter 14a • Key questions on the children and young people's COVID-19 vaccination programme • COVID-19 vaccinations received overseas • New film launched urging public to get flu and COVID-19 vaccines • A joint letter to parents of secondary school and college students in England on Covid-19 testing and vaccines from the Secretaries of State for Education and for Health and Social Care • Updates made to the COVID-19 vaccination elearning programme • HEE e-LfH COVID-19 vaccination programme launches hit 2 million • COVID-19 Vaccine Moderna e-learning now available
Children	
Adults	<ul style="list-style-type: none"> • Immunisation patient group direction (PGD) templates • Shingles immunisation programme: introduction of Shingrix® letter
Vaccine Update	<ul style="list-style-type: none"> • Vaccine update • Vaccine Update Index
PGD	
Travel Health	<ul style="list-style-type: none"> • Travel Health Pro • Fit for Travel • Travel Health • Jane Chiodini • Corona.Help

Mental Health / Learning Disability / Disability	
Mental Health	<ul style="list-style-type: none"> • Mental Health • Mental Health UK • Mind • Place2b • Rethink Mental Illness • Young Minds • Every Mind Matters • Calm • Headspace • We Can Talk • Get Your Mind Plan • Feeling low? • Better Health - Every Mind Matters - Resources • NHS mental health job coaches help thousands find work
Learning Disability	<ul style="list-style-type: none"> • Learning Disabilities • Learning Disability England • Mencap • Bild • Autism • Improving identification of people with a learning disability: guidance for general practice • Learning Disability Practice Webinar 2021 - 3rd November
Disability	<ul style="list-style-type: none"> • Disability Rights UK • Disability Matters

From Cradle to...

<p>Infant Health</p>	<ul style="list-style-type: none"> • Tommys • First Steps Nutrition Trust • Bliss • NHS App - Baby Buddy • NHS App - Peanut • ICON Toolkit • Gastro-oesophageal reflux disease (GORD) in infancy
<p>Child Health</p>	<ul style="list-style-type: none"> • Unicef • Health Professional Academy • Premature Babies • Child and Maternal Health • Women and Child First • Child Health Information Services • Place2b • Childhood eczema • Childhood asthma • Childrens Commissioner - The Big Answer
<p>Adolescent Health</p>	<ul style="list-style-type: none"> • Adolescent Health Programme • Society for Adolescent Health and Medicine • Young Minds • A joint letter to parents of secondary school and college students in England on Covid-19 testing and vaccines from the Secretaries of State for Education and for Health and Social Care • 11 things to remember for university this year
<p>Trans / Non-binary Health / LGBTQ+</p>	<ul style="list-style-type: none"> • LGBT Foundation • NHS population screening: information for trans and non-binary people • Cervical screening for trans men and/or non-binary people

Mens Health	<ul style="list-style-type: none">• Mens Health Forum• Mens Health Month• Mens health.org• Mens Health UK• Men and mental health• Men's Mental Health Awareness• Prostate Cancer UK• Orchid Fighting Male Cancer• Prostate Cancer UK Facebook Page• Male Urology Learning Month 2021 - November• Prostate cancer care - Building on change: Lessons learned during the pandemic
Women's Health	<ul style="list-style-type: none">• Womens Health Concern• Well Being of Women• Coppa Feel• Menopause Matters• The Menopause Charity• Royal College of Obstetricians and Gynaecologists - Guidelines• Pelvic Partnership• CRUK - Womens Cancer• Breast Cancer Now• Foundation for Women's Cancer• Eve Appeal• Ovarian.Org• Jo's Trust• Well Spring• Management of abnormal blood tests, Cancer, Ophthalmology, Women's health and Mental Health• Fast Five Quiz: Vaginal Health

Veterans Health	<ul style="list-style-type: none"> • The first call for help takes courage
Traveller / Gypsy Health	
The Older Population	<ul style="list-style-type: none"> • BGS • Ageing Better
Carers	<ul style="list-style-type: none"> • The Care Provider Alliance • Skills for Care • The Care Workers' Charity • Supporting Adult Carers • Adult Social Care Update • The value of adult social care in England • Enhancing the health of care home residents
Complex Needs	
Family Planning & Sexual Health	
Family Planning	<ul style="list-style-type: none"> • Faculty of Sexual and Reproductive Healthcare Education and Training
Reproductive	<ul style="list-style-type: none"> • Tommys
Sexual Health	<ul style="list-style-type: none"> • Sexual and Reproductive Health Profiles • FSRH Education & Training
Maternity / Neonate health	<ul style="list-style-type: none"> • Safety of Maternity services in England • NHS encourages pregnant women to get COVID-19 vaccine

Care of Patients with Long Term Conditions

LTC	<ul style="list-style-type: none"> • Chronic Conditions On Demand
Diabetes & Pre-Diabetes	<ul style="list-style-type: none"> • AZ Medical and Educational Goods and Services in Diabetes • Mumoactive • The mySugr App • Foot Check • Diabetes resources for healthcare professionals • Health Advice Diabetes • COVID-19 and type 2 diabetes in adults • Diabetes uk helping patients get active conference 2021 • SoliMix – Advancing therapy in suboptimally controlled basal insulin-treated type 2 diabetes • fORward thinking in type 2 diabetes: Optimising adult care to improve outcomes
Respiratory	<ul style="list-style-type: none"> • Spirometry: step by step • ARTP • British Lung Foundation • The Primary Care Respiratory Society • Respiratory Syncytial Virus (RSV) comms toolkit
COPD	<ul style="list-style-type: none"> • Right Breathe
Asthma	<ul style="list-style-type: none"> • FeNO - Fractional exhaled nitric oxide - for the diagnosis and management of Asthma • Asthma UK • Asthma: diagnosis, monitoring and chronic asthma management • GINA 2021: the missing pieces in the childhood asthma puzzle • GINA: Interim Guidance About COVID-19 & Asthma • Childhood asthma
Hypertension	<ul style="list-style-type: none"> • British Heart Foundation • Blood Pressure UK • Hypertension in adults: diagnosis and management • Hypertension in adults: diagnosis and treatment

Continuation of Long Term Conditions

CVD/AF	<ul style="list-style-type: none"> • QRISK®3-2018 risk calculator • Heart Rhythm Alliance • CVD risk assessment and management • Health matters: preventing cardiovascular disease • NICE impact cardiovascular disease prevention
Heart Failure	<ul style="list-style-type: none"> • British Heart Foundation • British Society Guidelines
Cancer / Oncology	<ul style="list-style-type: none"> • Surviving Thyroid Cancer • Help Us Help You - Lung Cancer Symptoms • Becca Breast Cancer Support App • Breast Cancer Now • MoleCare App • Macmillian • The Changing Story of Cancer programme • How to spot mouth cancer • Delivering the Primary Care Network (PCN) service specification on early cancer diagnosis 2021/22
Chronic Kidney Disease	<ul style="list-style-type: none"> • Kidney.Org • Kidney Quality Improvement Partnership
Liver Disease	<ul style="list-style-type: none"> • British Liver Trust • Liver Research • BRITISH ASSOCIATION FOR THE STUDY OF THE LIVER • LIVERnORTH • LIVER DISEASE AND CIRRHOSIS
Blood Disorders	<ul style="list-style-type: none"> • Blood Cancer • Thalassaemia • ITP • Haemophilia • UK MDS Forum • Save a life. Give plasma. • Diagnosis and management of pernicious anaemia • Blood donation to be made more inclusive

Continuation of Long Term Conditions

Frailty	<ul style="list-style-type: none"> • Recognising frailty • Identifying frailty • CLINICAL FRAILTY SCALE
Dementia	<ul style="list-style-type: none"> • Dementia UK • Understanding dementia • My House of Memories - NHS App • Dementia profile updates
G.I	<ul style="list-style-type: none"> • GIST Cancer UK
ENT	
G.U	
Neurological Conditions	<ul style="list-style-type: none"> • The Brain Tumour Charity • Narcolepsy.Org • ACNR
Musculoskeletal Conditions	<ul style="list-style-type: none"> • Rheumatology • National Axial Spondyloarthritis Society • Musculoskeletal health • Musculoskeletal health: 5 year prevention strategic framework • Faculty of Occupational Medicine

Continuation of Long Term Conditions

<p>Endocrine Disorders / Metabolic Disorders</p>	<ul style="list-style-type: none"> • Endocrinology • Turner Syndrome Support Society • Thyroid Eye Disease • British Thyroid Foundation • Thyroid UK • Pituitary • Addisons Disease • Parathyroid UK • The Royal Osteoporosis Society • Metabolic Support UK
<p>Dermatology</p>	<ul style="list-style-type: none"> • British Association of Dermatologists • Eczema • The British Skin Foundation • Acne vulgaris: management • The Primary Care Dermatology Society • Acne.org • Allergy UK • Urticaria • Hives • Sunburn • Causes of cancer and reducing your risk • What is Rosacea? • Rosecea • Herpes.org • Shingles • Fungal Skin Infection - Foot • The Psoriasis Association • Psoriasis • Melanoma • Skin Health Information • British Association of Plastic Reconstructive and Aesthetic Surgeons • Warts and verrucae

<i>Continuation of Long Term Conditions</i>	
Allergy / Auto-immune / Genetic Conditions	<ul style="list-style-type: none"> • Allergy UK • Rheumatology • Addisons Disease
Obesity	<ul style="list-style-type: none"> • Obesity UK • A 10-year Healthy Weight Strategy • NICE guidance - treatments for obesity hypoventilation syndrome (OHS)
Pain Management	<ul style="list-style-type: none"> • Pain Concern • UK career framework for pain nurses • IOTOD 2021 Autumn Webinar
Genomics	
Multi-Morbidity	<ul style="list-style-type: none"> • Multimorbidity • Multimorbidity / multiple long-term conditions (MLTC)
Minor Illness / First Contact Assessment	
Other	<ul style="list-style-type: none"> • Ultra Rare Disease Disorders And Disabilities Foundation • Atlas of Variation • MyCognition Home - NHS App
<i>End of Life Care</i>	
End of Life Care	<ul style="list-style-type: none"> • ReSPECT for healthcare professionals • End-of-life care for people with a brain tumour • ADVANCE CARE PLANNING • IDENTIFYING & MANAGING A DYING PATIENT

Covid-19	
Covid-19	<ul style="list-style-type: none"> • Covid Live • Coronavirus Statistics • COVID-19 contain framework: a guide for local decision-makers • UK completes over one million SARS-CoV-2 whole genome sequences • Coronavirus: lessons learned to date report published • Updates made to the COVID-19 vaccination elearning programme • New elearning session highlights dermatological side effects of COVID-19 • New COVID-19 community contact tracing programme now available • Staff Recovery Resources for critical care and the wider health workforce recovering from the COVID-19 pandemic • MindEd infographic highlights programme's success during COVID-19
Long Covid	<ul style="list-style-type: none"> • Supporting your recovery after COVID-19 • Long Covid Toolkit • Long term effects of COVID (Long COVID) • Post-COVID Syndrome (Long COVID) • COVID-19 Yorkshire Rehabilitation Screening Tool • FOM Guidance • Assessing long-term rehabilitation needs in COVID-19 survivors using a telephone screening tool (C19-YRS tool) • Long COVID elearning session available
Covid Response / Recovery	

News & Views	
Digital News / Remote Consultations	<ul style="list-style-type: none"> • Digital Health News Webinars • Digital Health News • NHS Digital
PSNC News	<ul style="list-style-type: none"> • 11th October • 13th October • 15th October • 18th October • 20th October
60 Second GP / Pulse / GP Online / HSJ	<ul style="list-style-type: none"> • 60 Second GP • GP Online • HSJ • Pulse Today
Primary Care Update / PCC	<ul style="list-style-type: none"> • Primary Care Bulletin • Public Policy Projects News
Kings Fund	Weekly News / Health Management and Policy Alert / Health and Well Being Bulletin / Digital Health Digest / Events Update
World Health Organisation	<ul style="list-style-type: none"> • WHO • OpenWHO
Midlands Academic Health Science Network	
Healthwatch	<ul style="list-style-type: none"> • Healthwatch
Black Country Bulletins	
Practice Index	<ul style="list-style-type: none"> • Practice Index Weekly

<i>Continuation News & Views</i>	
IHCT / CCG / STP / Healthier Futures	<ul style="list-style-type: none"> • Healthier Futures • Black Country & West Birmingham CCG • Dudley Integrated Health and Care • Integrated Care Systems September Update from the System Transition Group
University / Student Nurses	<ul style="list-style-type: none"> • Trust Newsletter
Medisa / Univadis / Geeky Medics / GP Notebook / Medscape	<ul style="list-style-type: none"> • Univadis Newsletter • Univadis Nurses Headlines • Medisa • Geeky Medics • Medscape Nurses • Clinical Guidelines. Real-World Perspectives. • FAST FIVE QUIZZES • Oral (mouth) and oropharyngeal (throat) examination • ADHD a New Risk Factor for Alzheimer's? • Antibiotic associated diarrhoea (AAD)
MIMS	<ul style="list-style-type: none"> • Latest MIMS news
The Health Foundation	<ul style="list-style-type: none"> • The Health Foundation • Agility: the missing ingredient for NHS productivity • Why greater investment in the public health grant should be a priority
The Health Care Leaders Update	<ul style="list-style-type: none"> • Health Care Leader News
PHE	
Innovation Agency	<ul style="list-style-type: none"> • Innovation Agency Exchange
RCN	<ul style="list-style-type: none"> • RCN • Supporting our members to lead change • Learning Disability Practice Webinar 2021 - 3rd November • Look after yourself this winter • Nursing Matters Podcast • Pain and Palliative Care Forum

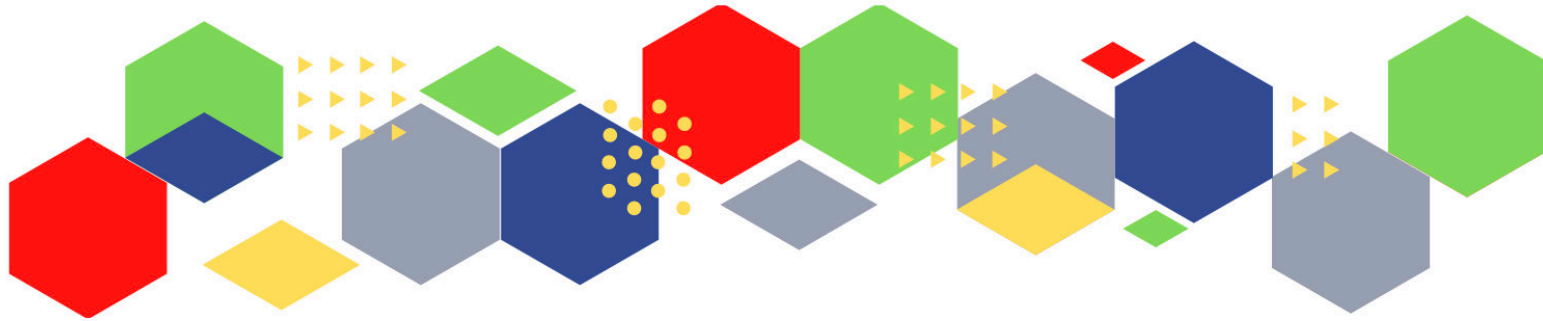
<i>Continuation News & Views</i>	
Nursing in Practice / Nursing Standard / Independent Nurse	<ul style="list-style-type: none"> • Nursing in Practice Bulletin • Nursing in Practice Clinical • GPN Bulletin • Independent Nurse Magazine • Practice Nursing
QNI	<ul style="list-style-type: none"> • QNI
NMC	<ul style="list-style-type: none"> • NMC
CMO / CNO	<ul style="list-style-type: none"> • Social care reform and what it means for our workforce
Nice	<ul style="list-style-type: none"> • NICE • Cardiovascular disease: risk assessment and reduction, including lipid modification
RCGP / BMA / The Lancet	<ul style="list-style-type: none"> • The Lancet • British Medical Journal • Royal College of General Practitioners • QOF QI hub • BMA Update • RCGP News Updates
Midlands Academic Health Science Network	<ul style="list-style-type: none"> • WMAHSN Network

Free Training / Webinars / Meetings / CPD	
Development / Information and Knowledge	<ul style="list-style-type: none"> • RCN Events - West Midlands • 16th November - MIMS Learning Live • Inaugural Broadcasts 2021 • 24th March 2022 - RCN Clinical Research Nursing Conference 2022 • Menopause Training • RCGP Learning • Deep Dive on DPP-4 Inhibitors • ISSUES & ANSWERS CONFERENCE SERIES 2021 • 22nd October IRIS Workshop 3: DA and Elderly People • Bringing people together to share knowledge - Virtual Conferences • 2nd, 3rd & 4th November - Eye health commissioning (primary care) – an introduction to contract management • ADVANCE CARE PLANNING • IDENTIFYING & MANAGING A DYING PATIENT • 2nd - 4th November - Diabetes uk helping patients get active conference 2021 • 3rd November - COVID-19 and type 2 diabetes in adults • 6th - 10th December - Wounds Week
Blogs/Vlogs	<ul style="list-style-type: none"> • Personalised care supporting plans - March 2021 • Tackling the elective backlog – exploring the relationship between deprivation and waiting times
Area Bulletins	<ul style="list-style-type: none"> • Dudley
BCWB Training Hub	<ul style="list-style-type: none"> • Black Country and West Birmingham Training Hub
Research	<ul style="list-style-type: none"> • Science Daily • Multimorbidity / multiple long-term conditions (MLTC)
Freebies	<ul style="list-style-type: none"> • Blue Light Card
Other	

Continuation of Free Training / Webinars / Meetings / CPD

Podcasts

- [The Nursing Handover Podcast](#)
- [Nursing Standard Podcasts](#)
- [What Makes a Nurse?](#)
- [The MedicsPro Podcast](#)
- [Nursing Matters](#)
- [Welcome to the BJN Podcast](#)
- [Why we care](#)
- [EBN podcast](#)
- [This Is Nursing](#)
- [Maroon Mindset](#)
- [Teach me, I'm a Nurse](#)
- [Past Caring](#)
- [RCGP eLearning podcast](#)
- [The BMJ Podcast](#)
- [Primary Care Network podcasts](#)
- [The Professional Support Unit's Pandemic Podcast](#)
- [How can public health nurses help deliver the Healthy Child Programme this winter?](#)
- [Talking GP](#)



Thank you for reading Future Proof Health's weekly news!
If you missed past issues, please click [here](#) to view them

More information can be found on our website, [here](#)

Don't forget to like us on [Facebook](#) & Follow us on [Twitter](#)

