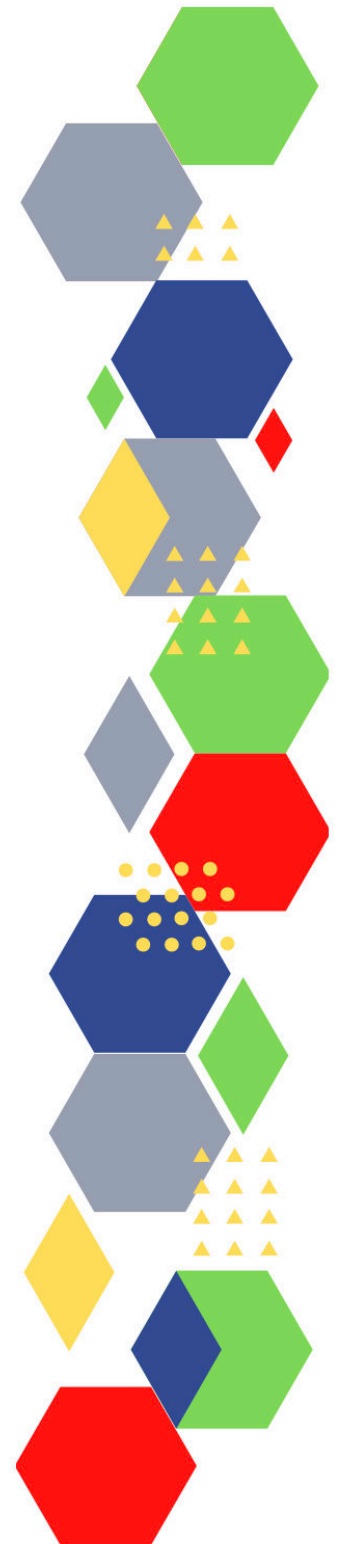
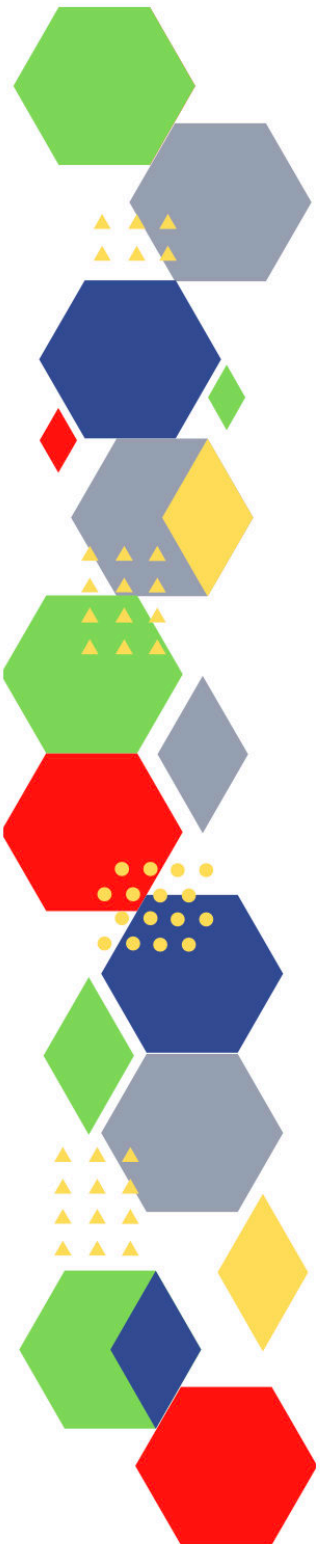




Future Proof Health Presents

Weekly News

14th April 2022



Communication	
Communication with Patients	
Communication within Teams	
Consent	<ul style="list-style-type: none"> • Gillick competency and Fraser guidelines • CONSENT POLICY • ReSPECT for healthcare professionals
People and Personal Development	
Personal / People Development / Leadership	<ul style="list-style-type: none"> • Accountability and delegation in practice
NHS Employers / HR / NHS Pension	<ul style="list-style-type: none"> • NHS Employers • Pensions Online
Health, Safety & Security	
<ul style="list-style-type: none"> • NPSA • Control of Substances Hazardous to Health (COSHH) • HSE Weekly Digest eBulletin 	
Gov UK - NHS	
CQC	<ul style="list-style-type: none"> • GP mythbusters • Examples of outstanding practice for GPs • Help shape our approach to system oversight
MIMS	<ul style="list-style-type: none"> • Prescribing Update
Antibiotic steward-ship / Anti-microbial resistance	
Drug / Device Alerts (MHRA)	
Emergency Situations	<ul style="list-style-type: none"> • The updated National Early Warning Score and its use with suspected Sepsis • Resuscitation Council UK

Vaccines / Medications / Prescribing	<ul style="list-style-type: none"> • Protocol for ordering, storing and handling vaccines • A Competency Framework for all Prescribers • Non-medical prescribing • The Human Medicines Regulations 2012 • RCN - Non-medical prescribers • Royal Pharmaceutical Society • Standards for prescribing • Clinical Negligence Scheme for General Practice • RCP and British Pharmacological Society report calls for personalised testing for safety and effectiveness of common medicines to be offered throughout the NHS
Infection Control / Infection Statics	<ul style="list-style-type: none"> • C. difficile infection: monthly data by prior trust exposure • E. coli bacteraemia: monthly data by location of onset • Klebsiella species bacteraemia: monthly data by location of onset • P. aeruginosa bacteraemia: monthly data by location of onset • MRSA bacteraemia: monthly data by location of onset • Hepatitis C in England and the UK • Group A streptococcal infections: activity during the 2021 to 2022 season
Safe Guarding	<ul style="list-style-type: none"> • Female genital mutilation (FGM) • PREVENT • Child protection system in the UK • Safeguarding Adults • Safeguarding children: detailed information
Practice Policies	
Audit	
Information Governance / Record Keeping	<ul style="list-style-type: none"> • Guide to Data Protection • Supporting general practice – Medical record keeping

Quality & Service Improvement

Quality, Service & Improvement	<ul style="list-style-type: none"> • The PRSB • General Practice Assessment Questionnaire (GPAQ) • Healthwatch • NHS Five Year Forward View • General Practice Forward View • NMC • Dr Jon Griffiths • NHS Confed
Roles in General Practice	<ul style="list-style-type: none"> • Standards for nursing associates • GP mythbuster 57: Health Care Assistants in General Practice
Revalidation	
Personal Practice & Development	
Practice Management	<ul style="list-style-type: none"> • Institute of General Practice Management • Practice Index
NHS Self Care & Resilience	<ul style="list-style-type: none"> • Samaritans • Mental Health at work • Calm • Supporting our NHS people • The Hub :: Black Country Healthcare NHS Foundation Trust • NHS England » Looking after you: confidential coaching and support for the primary care workforce
Practice Transformation	<ul style="list-style-type: none"> • Tell your patients about the NHS App • NHS App guidance - NHS Digital
Future of NHS / General Practice	<ul style="list-style-type: none"> • Virtual wards enabled by technology: hospital-level care for people in their own home • NHS England » Case study: virtual wards empower the people we care for in east Kent • NHS England » Case study: supporting people living with frailty in Hull and East Riding • Case study: providing rapid care to people in their own home rather than going to hospital, through a frailty virtual ward in Leeds • Virtual Wards enabled by technology - elearning for healthcare • Virtual wards
ICS / PCN	<ul style="list-style-type: none"> • Podcast - Matthew Winn - ICS Incoming.... Primary Care and Community Trusts

QOF / PHOF / DES / LES / NHS Contract / CQRS / CQUIN	<ul style="list-style-type: none"> • NHS England » Network Contract Directed Enhanced Service – Investment and Impact Fund 2022/23: Updated Guidance • NHS England » Network Contract Directed Enhanced Service – Investment and Impact Fund 2022/23 summary
Leadership	<ul style="list-style-type: none"> • Leadership Academy
Personalised Care	
Personalised Care / Self Care / Social Prescribing / Health Coaching	<ul style="list-style-type: none"> • Self Care forum • Personalised Care Institute • Personalised care • Social Prescribing Academy • Social Prescribing Champions Programme National Academy for Social Prescribing • New information sharing standard to support social prescribing – PRSB • Self Care Week Resources - Self Care Forum • Patient education / self management programmes for people with long term conditions 2020/21
Group consultation	
Working Differently	
Shared Decision Making	
Equality & Diversity	
Equality & Diversity	<ul style="list-style-type: none"> • Public Health Profiles
Inclusion Health	<ul style="list-style-type: none"> • Health Creation Academic Network • INCLUSION HEALTH SELF ASSESSMENT TOOL • GP ACCESS CARDS
Poverty / Homelessness	<ul style="list-style-type: none"> • Crisis • This is Poverty
Population Health / Health Communities	<ul style="list-style-type: none"> • Leeds Neighbourhood Network evaluation – Phase two Centre for Ageing Better • THE NUTRIENTS YOU NEED, SERVED ON A PLATE • Loneliness in London: what do we know and where are the evidence gaps?
Thrive Into Work	<ul style="list-style-type: none"> • Thrive into Work • Thrive into Work Referral form
Health Inequalities	
Trans / Non-binary Health / LGBTQ+	<ul style="list-style-type: none"> • LGBT Foundation • NHS population screening: information for trans and non-binary people • Cervical screening for trans men and/or non-binary people

Migrant / Refugee Health	<ul style="list-style-type: none"> • THE REFUGEE & MIGRANT CENTRE • Arrivals from Ukraine: advice for primary care • Assessing new patients from overseas: migrant health guide • Welcome: a guide for Ukrainians arriving in the UK • Homes for Ukraine: sponsor guidance - GOV.UK • How the NHS works infographic UKRAINIAN
Traveller / Gypsy / Romany Health	
Veterans Health	<ul style="list-style-type: none"> • The first call for help takes courage
Management of Emergency Situations	
Management of Emergency Situations	<ul style="list-style-type: none"> • The updated National Early Warning Score and its use with suspected Sepsis
111	
Red Flags	<ul style="list-style-type: none"> • Supporting general practice – Common pitfalls
Sepsis	<ul style="list-style-type: none"> • Sepsis: recognition, diagnosis and early management • Sepsis guidance implementation advice for adults • Sepsis in Children • Sepsis Trust • RCGP: Sepsis • quick SEPSIS RELATED ORGAN FAILURE ASSESSMENT
Therapeutic Monitoring	
OSCE	<ul style="list-style-type: none"> • Geeky Medics • Abdominal Examination - Demonstration - YouTube • Cardiovascular Examination - Demonstration - YouTube • Respiratory Examination - Demonstration - YouTube • Physical Diagnosis Skills - University of Washington School of Medicine • Mythbuster: 'I've got my usual cough – it's gone to my chest with green phlegm, so I need antibiotics'

Role Specific	
Cervical Cytology	<ul style="list-style-type: none"> • Guide to the interim assessment • British Association for Cytopathology • Lab Tests Online • Cervical Screening campaign Campaign Resource Centre
Ear Care	<ul style="list-style-type: none"> • Ear Care Centre • RNID
Wound Management	<ul style="list-style-type: none"> • Microworld • Tissue Viability Society • The BLS • Wounds on Thursdays
Minor Surgery	
Obtaining Samples / Results	<ul style="list-style-type: none"> • Lab Tests Online
Health Promotion / Health Screening	
Health Promotion / Population Health	<ul style="list-style-type: none"> • Better Health • EXi App • A matter of life and death - The Health Foundation
Health Screening	<ul style="list-style-type: none"> • PHE Screening
PHE/OHID	<ul style="list-style-type: none"> • Knowledge & Library Services • Campaign Resources • Public Health Profiles • Health Publications • Health Profile for England 2021 • Statistics at OHID - Office for Health Improvement and Disparities
NHS Health Check	<ul style="list-style-type: none"> • NHS Health Check
NOIDS / PHE Surveillance / Syndromic Surveillance	<ul style="list-style-type: none"> • Notifications of infectious diseases (NOIDs)

Addiction/Smoking	<ul style="list-style-type: none"> • Drink Coach • Stop smoking interventions and services • 2022 Conference - IOTOD
<p>Immunisation / Travel Health</p>	
<ul style="list-style-type: none"> • Vaccinations and infections • Joint Committee on Vaccination and Immunisation • Immunisation against infectious disease • West Midlands Immunisation Service • Immunisation information for Health Care Services within the West Midlands area • Vaccination of individuals with uncertain or incomplete immunisation status • WHO vaccine-preventable diseases: monitoring system. 2020 global summary • The Foundations of Immunization: What, Who, When and Why? • Winter Vaccination - Prime phase: Social Media content calendar and assets - 2021 • Measles outbreak training • Vaccine Safety Basics • HPV vaccination: guidance for healthcare practitioners • HPV vaccination programme for men who have sex with men (MSM) • Changing to a 2 dose NHS HPV vaccination schedule letter • Herpes zoster (shingles) immunisation programme 2021 to 2022: evaluation reports • Coronavirus (COVID-19) Infection Survey, UK: antibody and vaccination data, 6 April 2022 	
Flu	<ul style="list-style-type: none"> • Flu and flu vaccinations • The national influenza immunisation programme 2021 to 2022 • Flu vaccines for the 2021 to 2022 season poster • Appendix C: Flu vaccinator competency assessment tool • Healthcare assistants and flu vaccinations • Flu Campaign Resources 2021/22 • National flu and COVID-19 surveillance reports published

Continuation of Immunisation / Travel Health

Covid Vaccine	<ul style="list-style-type: none"> • Greenbook COVID-19 chapter 14a • Updates made to the COVID-19 vaccination elearning programme • HEE e-LfH COVID-19 vaccination programme launches hit 2 million • COVID-19 Vaccine Moderna e-learning now available • GP COVID-19 vaccine dashboard • Coronavirus (COVID-19) vaccines adverse reactions • COVID-19 vaccination: resources for children and young people aged 12 to 17 years • The Covid-19 vaccination programme • A guide to the spring booster for those aged 75 years and older and older residents in care homes • Coronavirus » Supporting COVID-19 vaccine uptake during Ramadan
Children	<ul style="list-style-type: none"> • NHS England » NHS rolls out COVID vaccine to five million 5 to 11 year olds • Childhood vaccine schedule - General Practice Notebook • Kawasaki disease - General Practice Notebook
Adults	<ul style="list-style-type: none"> • Immunisation patient group direction (PGD) templates • Shingles immunisation programme: introduction of Shingrix® letter • Training and Resources – ZOSTAVAX®
Vaccine Update	<ul style="list-style-type: none"> • Vaccine update • Vaccine Update Index
PGD	
Travel Health	<ul style="list-style-type: none"> • Travel Health Pro • Fit for Travel • Travel Health • Jane Chiodini • Corona.Help

Mental Health / Learning Disability / Disability	
Mental Health	<ul style="list-style-type: none"> • Mental Health • Mental Health UK • Mind • Place2b • Rethink Mental Illness • Young Minds • Every Mind Matters • Calm • Headspace • We Can Talk • Get Your Mind Plan • Feeling low? • Better Health - Every Mind Matters - Resources • ZSA Training • Psychiatry - Medscape • How to boost your mood through food • Severe mental illness (SMI) profile: April 2022 update • Premature mortality in adults with severe mental illness
Learning Disability	<ul style="list-style-type: none"> • Learning Disabilities • Learning Disability England • Mencap • Bild • Autism
Disability	<ul style="list-style-type: none"> • Disability Rights UK • Disability Matters

From Cradle to...

<p>Infant Health</p>	<ul style="list-style-type: none"> • Tommys • First Steps Nutrition Trust • Bliss • NHS App - Baby Buddy • NHS App - Peanut • ICON Toolkit
<p>Child Health</p>	<ul style="list-style-type: none"> • Unicef • Health Professional Academy • Premature Babies • Child and Maternal Health • Women and Child First • Child Health Information Services • Place2b • Childhood eczema • Childhood asthma • Paediatrics Research & Reports • Paediatric focus from GPn (contains content from SMA® Althera®: Learn about the differences of extensively hydrolysed formulas) • childhood vaccine schedule • Child obesity: patterns and trends
<p>Adolescent Health</p>	<ul style="list-style-type: none"> • Adolescent Health Programme • Society for Adolescent Health and Medicine • Young Minds

Mens Health	<ul style="list-style-type: none"> • Mens Health Forum • Mens Health Month • Mens health.org • Mens Health UK • Men and mental health • Men's Mental Health Awareness • Prostate Cancer UK • Orchid Fighting Male Cancer • Prostate Cancer UK Facebook Page • Men's Voices Event • Movember
Women's Health	<ul style="list-style-type: none"> • Womens Health Concern • Well Being of Women • Coppa Feel • Menopause Matters • The Menopause Charity • Royal College of Obstetricians and Gynaecologists - Guidelines • Pelvic Partnership • CRUK - Womens Cancer • Breast Cancer Now • Foundation for Women's Cancer • Eve Appeal • Ovarian.Org • Jo's Trust • Well Spring
The Older Population	<ul style="list-style-type: none"> • BGS • Ageing Better • The State of Ageing 2022
Young Carers	
Complex Needs	

Carers / Social Care / Care Homes	<ul style="list-style-type: none"> • The Care Provider Alliance • Skills for Care • The Care Workers' Charity • Supporting Adult Carers • Adult Social Care Update • Infection prevention and control: resource for adult social care • Welcome to Dudley Adults Portal
Family Planning & Sexual Health	
Family Planning	<ul style="list-style-type: none"> • Faculty of Sexual and Reproductive Healthcare Education and Training
Reproductive	<ul style="list-style-type: none"> • Tommys
Sexual Health / Sexual Abuse	<ul style="list-style-type: none"> • Sexual and Reproductive Health Profiles • FSRH Education & Training
Maternity / Neonate health	<ul style="list-style-type: none"> • Foods to avoid in pregnancy
Care of Patients with Long Term Conditions	
LTC	<ul style="list-style-type: none"> • Chronic Conditions On Demand
Diabetes & Pre-Diabetes	<ul style="list-style-type: none"> • AZ Medical and Educational Goods and Services in Diabetes • Mumoactive • The mySugr App • Foot Check • Helping Patients with Diabetes during Ramadan • More patients with diabetes set to benefit from continuous glucose monitoring
COPD	<ul style="list-style-type: none"> • Right Breathe

Continuation of Long Term Conditions

Respiratory	<ul style="list-style-type: none"> • Spirometry: step by step • ARTP • British Lung Foundation • The Primary Care Respiratory Society • Stop toxic air before 2040 • MIMS highlights lower-carbon inhalers online • Spirometry Restoration Announcement On behalf of Black Country & West Birmingham CCG From Elaine Cook Respiratory Primary Care Clinical Lead Executive (PCCLE) & Dr Atul Gulati, Respiratory Consultant, New Cross Hospital and Respiratory CLN Chair. It is now deemed relatively safe to resume Spirometry within General Practice/Primary Care, with a risk assessment, the use of one-way mouthpieces, bacterial and viral filters and appropriate PPE. Now that the general public are mostly vaccinated, free to go to pubs, shops and other public places without masks, it is deemed no higher a risk for General Practice
Asthma	<ul style="list-style-type: none"> • FeNO - Fractional exhaled nitric oxide - for the diagnosis and management of Asthma • Asthma UK • Asthma: diagnosis, monitoring and chronic asthma management • GINA 2021: the missing pieces in the childhood asthma puzzle • GINA: Interim Guidance About COVID-19 & Asthma
Hypertension	<ul style="list-style-type: none"> • British Heart Foundation • Blood Pressure UK • Hypertension in adults: diagnosis and management • Hypertension in adults: diagnosis and treatment • Size of the Prize for High Blood Pressure – Preventing Heart Attacks and Strokes at Scale
CVD/AF	<ul style="list-style-type: none"> • QRISK®3-2018 risk calculator • Heart Rhythm Alliance • CVD risk assessment and management • Health matters: preventing cardiovascular disease • AHA Journals • Good news for coffee lovers: Daily coffee may benefit the heart • Fast Five Quiz: Atrial Fibrillation Practice Essentials • Cholesterol management – A scientific case study based approach – CMB TV On Demand

Continuation of Long Term Conditions

Heart Failure	<ul style="list-style-type: none"> • British Heart Foundation • British Society Guidelines • NHS England » Primary care network offers extra support for high-risk group with heart failure and social isolation
Cancer / Oncology	<ul style="list-style-type: none"> • Surviving Thyroid Cancer • Help Us Help You - Lung Cancer Symptoms • Becca Breast Cancer Support App • Breast Cancer Now • MoleCare App • Macmillian • Bowel Cancer UK • Government making 'inadequate' progress against commitments on cancer services, say experts • NHS England » The two-week wait skin cancer pathway: innovative approaches to support early diagnosis of skin cancer as part of the NHS COVID-19 recovery plan • Medscape Oncology • Chronic Conditions Month 2022
Chronic Kidney Disease	<ul style="list-style-type: none"> • Kidney.Org • Kidney Quality Improvement Partnership • New treatment for CKD associated with diabetes
Liver Disease	<ul style="list-style-type: none"> • British Liver Trust • Liver Research • BRITISH ASSOCIATION FOR THE STUDY OF THE LIVER • LIVERnORTH • LIVER DISEASE AND CIRRHOSIS
Blood Disorders	<ul style="list-style-type: none"> • Blood Cancer • Thalassaemia • ITP • Haemophilia • UK MDS Forum • Save a life. Give plasma. • Diagnosis and management of pernicious anaemia • Haemochromatosis UK
G.I	<ul style="list-style-type: none"> • GIST Cancer UK • Overview PredictSURE IBD and IBDX to guide treatment of Crohn's disease
ENT	

Continuation of Long Term Conditions

G.U	
Neurological Conditions	<ul style="list-style-type: none"> • The Brain Tumour Charity • Narcolepsy.Org • ACNR • Neurology - Medscape
Musculoskeletal Conditions	<ul style="list-style-type: none"> • Rheumatology • National Axial Spondyloarthritis Society • Musculoskeletal health • Musculoskeletal health: 5 year prevention strategic framework • Faculty of Occupational Medicine • Thousands of people set to benefit from first new treatment for osteoporosis for over a decade • Guide to embedding your first contact physiotherapy service • Chartered Society of Physiotherapy • Joint replacement (primary): hip, knee and shoulder
Endocrine Disorders / Metabolic Disorders	<ul style="list-style-type: none"> • Endocrinology • Turner Syndrome Support Society • Thyroid Eye Disease • British Thyroid Foundation • Thyroid UK • Pituitary • Addisons Disease • Parathyroid UK • The Royal Osteoporosis Society • Metabolic Support UK
Frailty	<ul style="list-style-type: none"> • Recognising frailty • Identifying frailty • CLINICAL FRAILTY SCALE
Dementia	<ul style="list-style-type: none"> • Dementia UK • Understanding dementia • My House of Memories - NHS App • Dementia profile updates • Caring for Carers Dementia Support Group (Tuesdays) • Delirium Champions • Medscape Dementia • All About Us: New board game boosts confidence and wellbeing for people with dementia

Continuation of Long Term Conditions

Dermatology	<ul style="list-style-type: none"> • British Association of Dermatologists • Eczema • The British Skin Foundation • Acne vulgaris: management • The Primary Care Dermatology Society • Acne.org • Allergy UK • Urticaria • Hives • Sunburn • Causes of cancer and reducing your risk • What is Rosacea? • Rosecea • Herpes.org • Shingles • Fungal Skin Infection - Foot • The Psoriasis Association • Psoriasis • Melanoma • Skin Health Information • British Association of Plastic Reconstructive and Aesthetic Surgeons • Warts and verrucae
Allergy / Auto-immune / Genetic Conditions	<ul style="list-style-type: none"> • Allergy UK • Rheumatology • Addisons Disease • Autoinflammatory vs Autoimmune: What Is the Difference? FRIDAY, 22 APRIL 2022
Obesity	<ul style="list-style-type: none"> • Obesity UK • Child obesity: patterns and trends - GOV.UK • New calorie labelling rules come into force to improve nation's health
Pain Management	<ul style="list-style-type: none"> • Pain Concern • UK career framework for pain nurses
Genomics	
Multi-Morbidity	<ul style="list-style-type: none"> • Multimorbidity • Multimorbidity / multiple long-term conditions (MLTC)

<i>Continuation of Long Term Conditions</i>	
Minor Illness / First Contact Assessment / OSCE	Fact Sheets - Self Care Forum
Other / Case Studies	<ul style="list-style-type: none"> • Ultra Rare Disease Disorders And Disabilities Foundation • MyCognition Home - NHS App • The Cold Weather Plan for England
End of Life Care	
End of Life Care	<ul style="list-style-type: none"> • ReSPECT for healthcare professionals • Hospice UK • Palliative and end of life care profiles: April 2022 data update
Covid-19	
Covid-19	<ul style="list-style-type: none"> • Covid Live • Coronavirus Statistics • Written questions, answers and statements • Coronavirus » Letter to general practices: deployment of COVID-19 treatments for highest risk non-hospitalised patients • Living with COVID-19 – testing update
Long Covid	<ul style="list-style-type: none"> • Supporting your recovery after COVID-19 • Long Covid Toolkit • Long term effects of COVID (Long COVID) • Post-COVID Syndrome (Long COVID) • COVID-19 Yorkshire Rehabilitation Screening Tool • FOM Guidance • Lung health care after COVID-19 • Learning module: treating patients with long Covid • Premature mortality in adults with severe mental illness • Leveraging the experiences of people with Long Covid to generate better research • RCN: NHS should not cover staff Covid testing costs
Covid Response / Recovery	

News & Views	
Digital News / Remote Consultations	<ul style="list-style-type: none"> • Digital Health News Webinars • Digital Health News • NHS Digital • Public Sector Events, Conferences and Training • Tell your patients about the NHS App • NHS App guidance • Digital health and care congress 2022 • Skills Platform • [Webinar] How many systems does it take to support people in the community? • Digital Health Digest - 8 April 2022
PSNC News / Pharmacy	<ul style="list-style-type: none"> • National Pharmacy Association • Royal Pharmaceutical Society • PSNC Concessions Announcement • PSNC issues guidance on unplanned pharmacy closures • 8th April • 11th April
60 Second GP / Pulse / GP Online / HSJ / NB Medical	<ul style="list-style-type: none"> • 60 Second GP • GP Online • HSJ • Pulse Today
Primary Care Update / PCC / PPP	<ul style="list-style-type: none"> • Primary Care Bulletin • Public Policy Projects News
Health Care Leaders Newsletters	

Continuation News & Views

Kings Fund	<ul style="list-style-type: none"> • The Kings Fund • Weekly News / Health Management and Policy Alert / Health and Well Being Bulletin / Digital Health Digest • Ideas that change health and care
World Health Organisation	<ul style="list-style-type: none"> • WHO • OpenWHO
IHCT / CCG / STP / Healthier Futures	<ul style="list-style-type: none"> • Healthier Futures • Black Country & West Birmingham CCG • Dudley Integrated Health and Care • Home :: Black Country Healthcare NHS Foundation Trust • Your Friday Round Up
NHSI / NHSE	
University / Student Nurses	
Medisa / Univadis / Geeky Medics / GP Notebook / Medscape	<ul style="list-style-type: none"> • Univadis Newsletter • Univadis Nurses Headlines • Medisa • Geeky Medics • Medscape Nurses • GP Notebook
The Health Foundation	<ul style="list-style-type: none"> • The Health Foundation • Podcast: Time to get tougher on the risk factors fraying our health?
The Health Care Leaders Update	<ul style="list-style-type: none"> • Health Care Leader News
Practice Index	
Innovation Agency	<ul style="list-style-type: none"> • Innovation Agency Exchange
RCN	<ul style="list-style-type: none"> • RCN • Demanding change for our profession • Winning the long game • National insurance hike and rising inflation leaves experienced nurses over £900 worse off • COVID-19 Royal College of Nursing • Fair mileage rates now: RCN writes to England's chief nurses for support • A juggling act: managing your time effectively • Fair Pay for Nursing Campaigns • Learning and Wellbeing Programme Congress

Continuation News & Views

Nursing in Practice / Nursing Standard / Independent Nurse	<ul style="list-style-type: none"> • Nursing Times • Independent Nurse Magazine • Practice Nursing • Practice Nursing Bulletin • Practice Nursing Community Bulletin • \
QNI	<ul style="list-style-type: none"> • QNI
NMC	<ul style="list-style-type: none"> • NMC
CMO / CNO	
WHO	<ul style="list-style-type: none"> • WHO
Nice	<ul style="list-style-type: none"> • NICE
RCGP / BMA / The Lancet	<ul style="list-style-type: none"> • The Lancet • British Medical Journal • Royal College of General Practitioners • QOF QI hub • BMA Update • Why do GPs rarely do video consultations? qualitative study in UK general practice
Midlands Academic Health Science Network	<ul style="list-style-type: none"> • WMAHSN Network
Healthwatch	<ul style="list-style-type: none"> • Healthwatch
Other	

Free Training / Webinars / Meetings / CPD

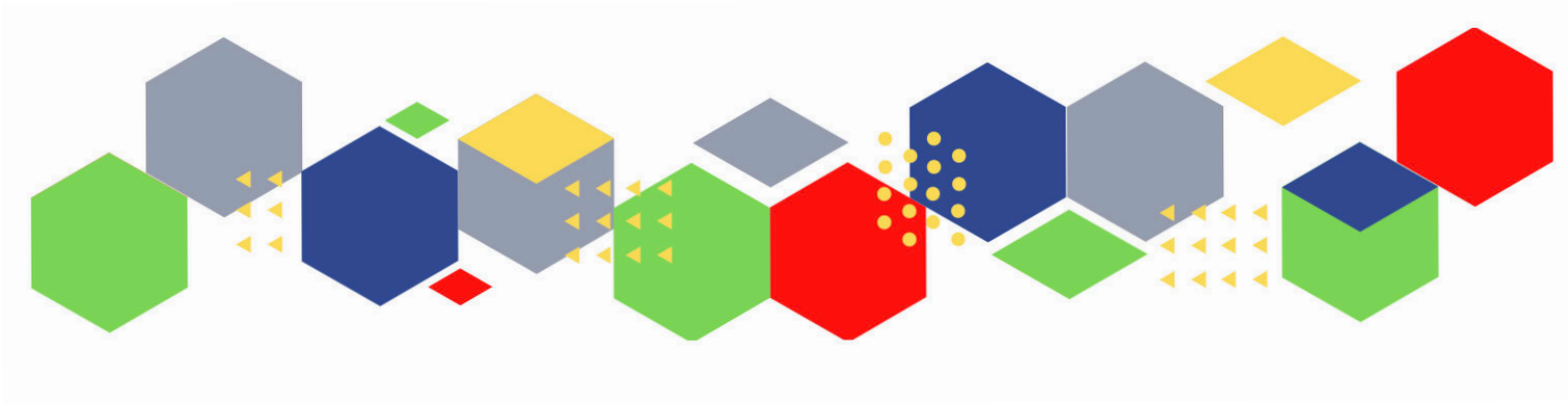
e-Learning for Health	<ul style="list-style-type: none"> • New elearning session highlights dermatological side effects of COVID-19 • New COVID-19 community contact tracing programme now available • Staff Recovery Resources for critical care and the wider health workforce recovering from the COVID-19 pandemic • MindEd infographic highlights programme's success during COVID-19 • Long COVID elearning session available • The Changing Story of Cancer programme • Updates to the Flu Immunisation elearning programme for the 2021/22 flu season • Flu Immunisation programme - elearning • Foundation elearning programme update September 2021
Eventbrite	<ul style="list-style-type: none"> • Future Proof Health Eventbrite Page • Acute Behavioural Crisis in CAMHS Registration, Multiple Dates Eventbrite • Palliative & end of life care for people experiencing homelessness (2-day) Tickets, Thu 5 May 2022 at 09:00 Eventbrite • Adult Minor Illness Course Tickets, Tue 26 Apr 2022 at 09:30 Eventbrite • Paediatric Triage Course Tickets, Thu 28 Apr 2022 at 09:30 Eventbrite • Diabetes Education Update: 9 Care Processes and 3 Treatment Targets • Emerging models in menopause – 13th April, 12:30-13:30 - https://www.eventbrite.co.uk/e/250122080877 • Spreading VGCs at scale: Learnings from 2021 – 25th May, 12:30-13:45 - https://www.eventbrite.co.uk/e/250120606467 • Emerging models in diabetes – 14th June, 12:30-13:30 - https://www.eventbrite.co.uk/e/250128078817 • Supporting families and children through VGCs – 13th July, 12:30-13:30 - https://www.eventbrite.co.uk/e/250133545167
YouTube	<ul style="list-style-type: none"> • NHS England
Blogs/Vlogs	

Continuation of Free Training / Webinars / Meetings / CPD

Area Bulletins	
BCWB Training Hub	
Evidence based care	
Development / Information and Knowledge	<ul style="list-style-type: none"> • FutureProof Health Training & Events • Inaugural Broadcasts 2021 • Red Whale Training • LATEST WEBINARS FROM ISSUES & ANSWERS • Nursing Events • Hot Topics Migrant and Refugee Health Clinic - Tuesday 26th April 2022 • FREE Hot Topics Safeguarding Clinic • Just launched: General practice in-person conference • Getting ready for patients to have access to their future data • Online workshop: Patient, professional and public activation • Inclusive Pharmacy Practice: Population Health Management Webinar for system pharmacy professionals • Online workshop: Getting Unstuck • Looking after our primary care people – Health and wellbeing engagement event • General Practice Webinar • Your invitation to: GP's, what's your role in the management of cow's milk protein allergy (CMPA)? Helping you navigate the CMPA consultation - 21st April, 7pm • Chronic Conditions Month 2022 • The Digital Healthcare Show, part of Health Plus Care - 18th/19th May • Nursing in Practice Birmingham - 9th June • 2022: 18th National Conference of the Primary Care Diabetes Society • Public Participation Online Learning Programme • We would like to welcome you back to Chronic Conditions • Managing Moisture Associated Skin Damage • Don't Let Hard-to-Heal Wounds Hold You Back

Continuation of Free Training / Webinars / Meetings / CPD

Free to RCN	<ul style="list-style-type: none"> • 13 Apr - RCN Birmingham East, North and Solihull branch meeting • 20 Apr - RCN South Staffordshire Learning Event: An introduction to genomics in health care - how relevant is it to nursing? • 20 Apr - RCN North Staffordshire Learning Event: Adapting and adopting – the Staff Support & Counselling Service • 27 Apr - RCN Birmingham East, North and Solihull Learning Event: When health, safety and patient care crosses into the Coroner's Court process • 18 May - RCN North Staffordshire Learning Event: A wound care update and the WAPU app
Podcasts	<ul style="list-style-type: none"> • The Nursing Handover Podcast • Nursing Standard Podcasts • What Makes a Nurse? • The MedicsPro Podcast • Nursing Matters • Welcome to the BJN Podcast • Why we care • EBN podcast • This Is Nursing • Maroon Mindset • Teach me, I'm a Nurse • Past Caring • RCGP eLearning podcast • The BMJ Podcast • Primary Care Network podcasts • The Professional Support Unit's Pandemic Podcast • How can public health nurses help deliver the Healthy Child Programme this winter? • Talking GP • Podcast – Matthew Winn – ICS Incoming.... Primary Care and Community Trusts • NB Hot Topics Podcast
Research	<ul style="list-style-type: none"> • Science Daily • Multimorbidity / multiple long-term conditions (MLTC) • Funding bodies launch consultation on future research assessment
Freebies	<ul style="list-style-type: none"> • Blue Light Card
Other	



Thank you for reading Future Proof Health's weekly news!

If you missed past issues, please click [here](#) to view them

More information can be found on our website, [here](#)

Don't forget to like us on [Facebook](#) & Follow us on [Twitter](#)

