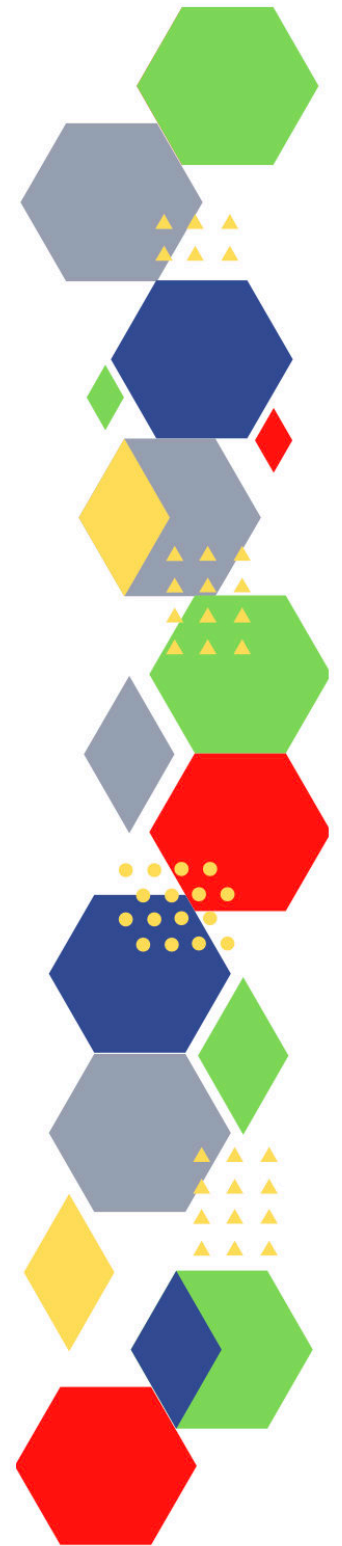




Future Proof Health Presents

Weekly News

9th March 2023



Communication	
Communication with Patients	<ul style="list-style-type: none"> <li>• <a href="#">Staff respect</a></li> </ul>
Communication within Teams	
Consent / Advocacy / IMCA	
People and Personal Development	
Personal / People Development / Leadership	<ul style="list-style-type: none"> <li>• <a href="#">Accountability and delegation in practice</a></li> <li>• <a href="#">Dealing with difficult situations - courageous conversations</a></li> <li>• <a href="#">Mentoring – the how, the what and the why 22 March 2023 from 12:30 to 14:00</a></li> <li>• <a href="#">The leader as a coach - building stronger teams</a></li> <li>• <a href="#">Release your potential   The King's Fund (kingsfund.org.uk)</a></li> </ul>
NHS Employers / HR / NHS Pension	<ul style="list-style-type: none"> <li>• <a href="#">NHS Employers</a></li> <li>• <a href="#">Pensions Online</a></li> </ul>
Health, Safety & Security	
	<ul style="list-style-type: none"> <li>• <a href="#">NPSA</a></li> <li>• <a href="#">Control of Substances Hazardous to Health (COSHH)</a></li> <li>• <a href="#">Weekly Digest Newsletter: 28 February 2023 (govdelivery.com)</a></li> </ul>
Gov UK - NHS	
CQC	<ul style="list-style-type: none"> <li>• <a href="#">GP mythbusters</a></li> <li>• <a href="#">YouTube - Care Quality Commission</a></li> <li>• <a href="#">News from the Care Quality Commission: February 2023 (govdelivery.com)</a></li> <li>• <a href="#">CQC update for adult social care providers (govdelivery.com)</a></li> <li>• <a href="#">CORRECTION: CQC update for adult social care providers (govdelivery.com)</a></li> <li>• <a href="#">CQC update for primary medical and dental services (govdelivery.com)</a></li> <li>• <a href="#">Our approach to assessing local authorities and integrated care systems (govdelivery.com)</a></li> <li>• <a href="#">Smiling matters 2023 report launch webinar (govdelivery.com)</a></li> </ul>

<p>Vaccines / Medications / Prescribing</p>	<ul style="list-style-type: none"> <li>• <a href="#">Protocol for ordering, storing and handling vaccines</a></li> <li>• <a href="#">A Competency Framework for all Prescribers</a></li> <li>• <a href="#">Non-medical prescribing</a></li> <li>• <a href="#">The Human Medicines Regulations 2012</a></li> <li>• <a href="#">RCN - Non-medical prescribers</a></li> <li>• <a href="#">Royal Pharmaceutical Society</a></li> <li>• <a href="#">Standards for prescribing</a></li> <li>• <a href="#">Clinical Negligence Scheme for General Practice</a></li> <li>• <a href="#">Home - electronic medicines compendium (emc)</a></li> <li>• <a href="#">Drug shortages - live tracker   MIMS online</a></li> <li>• <a href="#">NHS England » Pharmacy Manual</a></li> </ul>
<p>MIMS</p>	<ul style="list-style-type: none"> <li>• <a href="#">Prescribing Update</a></li> <li>• <a href="#">Changes this month on mims.co.uk:</a></li> <li>• <a href="#">12 new products   View new products tracker »</a></li> <li>• <a href="#">10 new generic products   View new generics tracker »</a></li> <li>• <a href="#">27 new drug shortages   View shortages tracker »</a></li> <li>• <a href="#">41 price changes   View price changes tracker »</a></li> <li>• <a href="#">4 new product indications   View new and deleted indications tracker »</a></li> <li>• <a href="#">19 deleted products   View deleted products tracker »</a></li> <li>• <a href="#">Pseudoephedrine safety under review (outlook.com)</a></li> <li>• <a href="#">Cheaper HRT payment option to be introduced from 1 April (outlook.com)</a></li> <li>• <a href="#">Three COVID-19 treatments receive provisional NICE approval (outlook.com)</a></li> <li>• <a href="#">Oral iron supplements for iron-deficiency states (outlook.com)</a></li> <li>• <a href="#">Antidiabetic agents, use in renal impairment (outlook.com)</a></li> <li>• <a href="#">Anti-anginal preparations, summary by pharmacological class (outlook.com)</a></li> <li>• <a href="#">Monitoring requirements for hyperlipidaemia treatments (outlook.com)</a></li> <li>• <a href="#">Ophthalmic preparations, preservatives and potential sensitisers as ingredients (outlook.com)</a></li> <li>• <a href="#">Dry eye treatments (outlook.com)</a></li> <li>• <a href="#">Emollients, potential skin sensitisers as ingredients (outlook.com)</a></li> <li>• <a href="#">Consider innovative interventions instead of potentially addictive drugs, says NHS England (mims.co.uk)</a></li> <li>• <a href="#">Digital mental health therapies receive initial approval from NICE (mims.co.uk)</a></li> </ul>
<p>Antibiotic steward-ship / Anti-microbial resistance</p>	
<p>Health Protection Review</p>	
<p>Drug / Device Alerts (MHRA)</p>	<ul style="list-style-type: none"> <li>• <a href="#">Drug Safety Update (mhradrugsafety.org.uk)</a></li> </ul>
<p>Emergency Situations</p>	<ul style="list-style-type: none"> <li>• <a href="#">Resuscitation Council UK</a></li> </ul>

Infection Control / Infection Statics	<ul style="list-style-type: none"> <li>• <a href="#">NHS England » National infection prevention and control</a></li> </ul>
Safe Guarding	<ul style="list-style-type: none"> <li>• <a href="#">Female genital mutilation (FGM)</a></li> <li>• <a href="#">PREVENT</a></li> <li>• <a href="#">Child protection system in the UK</a></li> <li>• <a href="#">Safeguarding Adults</a></li> <li>• <a href="#">Safeguarding children: detailed information</a></li> <li>• <a href="#">Domestic abuse victim services, England and Wales: 2022 (www.gov.uk)</a></li> <li>• <a href="#">Dudley Financial Abuse Alliance - September 2022 (govdelivery.com)</a></li> <li>• <a href="#">Wolverhampton Safeguarding Together</a></li> </ul>
Practice Policies: Practice Management / Accountability Duty of Candour	<ul style="list-style-type: none"> <li>• <a href="#">The dreaded 8am bottleneck of calls! (outlook.com)</a> – need to sign in</li> </ul>
Audit	
Information Governance / Record Keeping	<ul style="list-style-type: none"> <li>• <a href="#">vPRSB Newsletter: February 2023 (theprsb.org)</a></li> <li>• <a href="#">Using Enhanced Review (SNOMED) codes when giving a patient access to their health record - NHS Digital (createsend1.com)</a></li> <li>• <a href="#">A patient video (createsend1.com)</a></li> <li>• <a href="#">Online access to GP health records – what's in it for patients?</a></li> <li>• <a href="#">The Personalised Care and Support Plan Standard</a></li> </ul>
<b>Quality &amp; Service Improvement</b>	
Quality, Service & Improvement	<ul style="list-style-type: none"> <li>• <a href="#">The PRSB</a></li> <li>• <a href="#">General Practice Assessment Questionnaire (GPAQ)</a></li> <li>• <a href="#">Healthwatch</a></li> <li>• <a href="#">NHS Five Year Forward View</a></li> <li>• <a href="#">General Practice Forward View</a></li> <li>• <a href="#">NMC</a></li> <li>• <a href="#">Dr Jon Griffiths Blog</a></li> <li>• <a href="#">NHS Confed</a></li> <li>• <a href="#">Health Quality Improvement Partnership</a></li> <li>• <a href="#">Download the Building for health document (createsend1.com)</a></li> <li>• <a href="#">Watch film featuring an exemplar project (createsend1.com)</a></li> <li>• <a href="#">Supporting general practice to transform and create a sustainable future</a></li> </ul>

Roles in General Practice Including AHP	<ul style="list-style-type: none"> <li>• <a href="#">Standards for nursing associates</a></li> <li>• <a href="#">GP mythbuster 57: Health Care Assistants in General Practice</a></li> <li>• <a href="#">NHS England » Allied Health Professions</a></li> <li>• <a href="#">GP practice team (phe.gov.uk)</a></li> <li>• <a href="#">animations about different roles (outlook.com)</a></li> <li>• <a href="#">28 March, 10.30am - 4pm. Celebrating Six Years of Nursing Associates (NA) and the difference they make in delivering patient care</a></li> <li>• <a href="#">29 March, 1pm – 2.30pm. Health and Wellbeing Coach - share and learn webinar</a></li> <li>• <a href="#">22 March, 1.30pm – 3pm. Care Coordinator - share and learn webinar</a></li> </ul>
Revalidation	
Personal Practice & Development	
Practice Management	<ul style="list-style-type: none"> <li>• <a href="#">Institute of General Practice Management</a></li> <li>• <a href="#">Practice Index</a></li> <li>• <a href="#">General Practice Appointment Data (GPAD)</a></li> </ul>
EMIS / System One / IT	
Recruitment Employment / Retirement / Legacy Nursing	
NHS Staff Self Care & Resilience	<ul style="list-style-type: none"> <li>• <a href="#">Samaritans</a></li> <li>• <a href="#">Mental Health at work</a></li> <li>• <a href="#">Calm</a></li> <li>• <a href="#">Supporting our NHS people</a></li> <li>• <a href="#">The Hub :: Black Country Healthcare NHS Foundation Trust</a></li> </ul>
Supporting International Recruitment in the NHS	
Practice Transformation / Innovation Agency	<ul style="list-style-type: none"> <li>• <a href="#">NHS Providers</a></li> <li>• <a href="#">NHS England » Medical Workforce Race Equality Standard – a commitment to collaborate; The first five</a></li> <li>• <a href="#">Remote Consultations (createsend1.com)</a></li> <li>• <a href="#">Document Workflow (createsend1.com)</a></li> <li>• <a href="#">Redesigning Appointment Systems (createsend1.com)</a></li> <li>• <a href="#">Supporting Carers in General Practice (createsend1.com)</a></li> <li>• <a href="#">Request Support Services   Volunteer Responders (nhsvolunteerresponders.org.uk)</a></li> <li>• <a href="#">16 March, 10am – 12pm. Flexible working: making it happen</a></li> <li>• <a href="#">16 March, 12.30pm – 1.30pm. Making general practice websites highly usable and highly accessible</a></li> </ul>

Future of NHS / General Practice / NHS Recovery	<ul style="list-style-type: none"> <li>• <a href="#">NHS England</a></li> <li>• <a href="#">NHS England » Primary care</a></li> <li>• <a href="#">NHS mandate 2022 to 2023</a></li> <li>• <a href="#">Changes to NHS budget</a></li> <li>• <a href="#">Register with a GP Surgery</a></li> <li>• <a href="#">Press release CIPFA publishes interesting care report</a></li> </ul>
NHS Resolution	
NHS 75	<ul style="list-style-type: none"> <li>• <a href="#">Parkrun for the NHS (outlook.com)</a></li> <li>• <a href="#">NHS 75 comms toolkit</a></li> </ul>
ICS / ICB / ICP / PCN Commissioning	<ul style="list-style-type: none"> <li>• <a href="#">NHS England » Integrated care</a></li> <li>• <a href="#">NHS England » Case studies to support integrated care systems to adopt and spread innovation</a></li> <li>• <a href="#">Interview: Nurses to have a 'strong strategic' voice in ICBs</a></li> <li>• <a href="#">NHS England » Listening well guidance – A blueprint for organisations to develop a local listening strategy</a></li> <li>• <a href="#">Personal Health Budget (PHB) Quality Framework (createsend1.com)</a></li> </ul>
QOF / PHOF / DES / LES / NHS Contract / CQRS / CQUIN	
Leadership / Innovation	
Greener NHS	<ul style="list-style-type: none"> <li>• <a href="#">Greener Allied Health Professional hub (england.nhs.uk)</a></li> <li>• <a href="#">High quality, low-carbon respiratory care</a></li> <li>• <a href="#">Supporting patients with inhaler choices</a></li> <li>• <a href="#">NHS England » Carbon reduction plan requirements for the procurement of NHS goods, services and works</a></li> </ul>
<b>Personalised Care</b>	
Personalised Care / Self Care / Social Prescribing / Health Coaching	<ul style="list-style-type: none"> <li>• <a href="#">Self Care forum</a></li> <li>• <a href="#">Personalised Care Institute</a></li> <li>• <a href="#">Personalised care</a></li> <li>• <a href="#">Social Prescribing Academy</a></li> <li>• <a href="#">NHS England » Listening well guidance – A blueprint for organisations to develop a local listening strategy</a></li> <li>• <a href="#">short course on working with people and communities (createsend1.com)</a></li> </ul>
Group consultation	
Working Differently	
Shared Decision Making	<ul style="list-style-type: none"> <li>• <a href="#">Personalised Care Institute</a></li> </ul>

Equality & Diversity	
Equality & Diversity	<ul style="list-style-type: none"> <li>• <a href="#">Public Health Profiles</a></li> <li>• <a href="#">Home page - NHS - Race and Health Observatory</a><a href="#">NHS – Race and Health Observatory (nhsrho.org)</a></li> <li>• <a href="#">Improving health and care- Learn more (nhsrho.org)</a></li> <li>• <a href="#">Empowering Vulnerable Communities Learn more (nhsrho.org)</a></li> <li>• <a href="#">Innovating for all- Learn more (nhsrho.org)</a></li> <li>• <a href="#">Creating equitable environments Learn more (nhsrho.org)</a></li> <li>• <a href="#">Collaborating globally -Learn more (nhsrho.org)</a></li> <li>• <a href="#">NHS England » Medical Workforce Race Equality Standard – a commitment to collaborate; The first five</a></li> </ul>
Inclusion Health	<ul style="list-style-type: none"> <li>• <a href="#">Health Creation Academic Network</a></li> <li>• <a href="#">Inequality on the inside</a></li> </ul>
Poverty / Homelessness	<ul style="list-style-type: none"> <li>• <a href="#">Crisis</a></li> <li>• <a href="#">This is Poverty</a></li> <li>• <a href="#">Tables on rough sleeping (outlook.com)</a></li> <li>• <a href="#">Dashboards on homelessness (outlook.com)</a></li> <li>• <a href="#">Dashboards on rough sleeping (outlook.com)</a></li> </ul>
Population Health / Health Communities	<ul style="list-style-type: none"> <li>• <a href="#">short course on working with people and communities (createsend1.com)</a></li> <li>• <a href="#">23 March, 10am – 3.30pm, Birmingham. The Care Programme: Demonstrating how neighbourhood teams and integrated care deliver better outcomes for people</a></li> <li>• <a href="#">16 March, 11am – 12pm. An introduction to working with people and communities</a></li> <li>• <a href="#">28 March, 10am – 11am. New statutory guidance on working with people and communities</a></li> </ul>
Thrive Into Work	<ul style="list-style-type: none"> <li>• <a href="#">Thrive into Work</a></li> <li>• <a href="#">Thrive into Work Referral form</a></li> </ul>
Health Inequalities	<ul style="list-style-type: none"> <li>• <a href="#">NHS News</a></li> <li>• <a href="#">Health inequalities – from evidence to action</a></li> <li>• <a href="#">The health disparities white paper disappearing shows a dangerous pattern for action on health</a></li> <li>• <a href="#">Low life expectancy in the north east, and what to do about it – with Alice Wiseman and Professor Clare Bamba</a></li> </ul>
Trans / Non-binary Health / LGBTQ+	<ul style="list-style-type: none"> <li>• <a href="#">LGBT Foundation</a></li> <li>• <a href="#">Surgery staff grab sheet (squarespace.com)</a></li> <li>• <a href="#">Trans inclusive organisations — TransActual</a></li> <li>• <a href="#">TransActual - Healthcare</a></li> <li>• <a href="#">CliniQ</a></li> <li>• <a href="#">LGBTQ+ staff and patients deserve better from the NHS (kingsfundmail.org.uk)</a></li> <li>• <a href="#">New learning framework to support those working with LGBTQ+ people in later life</a></li> </ul>

Migrant / Refugee Health	<ul style="list-style-type: none"> <li>• <a href="#">THE REFUGEE &amp; MIGRANT CENTRE</a></li> </ul>
Traveller / Gypsy / Romany Health	<ul style="list-style-type: none"> <li>• <a href="#">Gypsy Roma and Traveller History and Culture   The Traveller Movement</a></li> <li>• <a href="#">Friends, Families and Travellers (gypsy-traveller.org)</a></li> </ul>
Veterans Health	<ul style="list-style-type: none"> <li>• <a href="#">The first call for help takes courage</a></li> </ul>
Voluntary / Charity	
<b>Management of Emergency Situations</b>	
Management of Emergency Situations	
111 / Emergency Care	
First Contact	<ul style="list-style-type: none"> <li>• <a href="#">Supporting general practice – Common pitfalls</a></li> <li>• <a href="#">Paediatrics for Primary Care (and anyone else) (gppaedstips.blogspot.com)</a></li> </ul>
Red Flags	
Sepsis	<ul style="list-style-type: none"> <li>• <a href="#">Sepsis: recognition, diagnosis and early management</a></li> <li>• <a href="#">Sepsis guidance implementation advice for adults</a></li> <li>• <a href="#">Sepsis in Children</a></li> <li>• <a href="#">Sepsis Trust</a></li> <li>• <a href="#">quick SEPSIS RELATED ORGAN FAILURE ASSESSMENT</a></li> <li>• <a href="#">‘Sepsis and systemic or disseminated infections’ (outlook.com)</a></li> <li>• <a href="#">23 March, 12.30pm – 1.45pm. Sepsis in primary care</a></li> </ul>
Therapeutic Monitoring	
OSCE	<ul style="list-style-type: none"> <li>• <a href="#">Geeky Medics</a></li> <li>• <a href="#">Abdominal Examination - Demonstration - YouTube</a></li> <li>• <a href="#">Cardiovascular Examination - Demonstration - YouTube</a></li> <li>• <a href="#">Respiratory Examination - Demonstration - YouTube</a></li> <li>• <a href="#">Physical Diagnosis Skills - University of Washington School of Medicine</a></li> </ul>



Role Specific	
Cervical Cytology	<ul style="list-style-type: none"> <li>• <a href="#">Guide to the interim assessment</a></li> <li>• <a href="#">British Association for Cytopathology</a></li> <li>• <a href="#">Lab Tests Online</a></li> <li>• <a href="#">Cervical screening: quarterly coverage data reports 2022 - GOV.UK (www.gov.uk)</a></li> </ul>
Ear Care	<ul style="list-style-type: none"> <li>• <a href="#">Ear Care Centre</a></li> <li>• <a href="#">RNID</a></li> </ul>
Wound Management / Compression	<ul style="list-style-type: none"> <li>• <a href="#">Microworld</a></li> <li>• <a href="#">Tissue Viability Society</a></li> <li>• <a href="#">The BLS</a></li> <li>• <a href="#">My Microworld Online</a></li> <li>• <a href="#">Lymphoedema/Compression workshop - Secure Your Spot at PCN Live (mahealthcarevents.co.uk)</a></li> </ul>
Minor Surgery	
Obtaining Samples / Results	<ul style="list-style-type: none"> <li>• <a href="#">Lab Tests Online</a></li> </ul>
Health Promotion / Health Screening	
Health Promotion / Population Health	<ul style="list-style-type: none"> <li>• <a href="#">Better Health</a></li> <li>• <a href="#">SHAPE   Strategic Health Asset Planning and Evaluation (shapeatlas.net)</a></li> </ul>
Health Screening	<ul style="list-style-type: none"> <li>• <a href="#">PHE Screening</a></li> <li>• <a href="#">Cervical screening: quarterly coverage data reports 2022 - GOV.UK (www.gov.uk)</a></li> </ul>
PHE / OHID / UKHSA	<ul style="list-style-type: none"> <li>• <a href="#">Knowledge &amp; Library Services</a></li> <li>• <a href="#">Campaign Resources</a></li> <li>• <a href="#">Public Health Profiles</a></li> <li>• <a href="#">Health Publications</a></li> <li>• <a href="#">Health Profile for England 2021</a></li> <li>• <a href="#">English indices of deprivation 2019</a></li> </ul>
NHS Health Check	<ul style="list-style-type: none"> <li>• <a href="#">NHS Health Check</a></li> </ul>

UK GOV Flu / Covid / Bird Flu	<ul style="list-style-type: none"> <li>• <a href="#">Bird flu (avian influenza): findings in non-avian wildlife (outlook.com)</a></li> <li>• <a href="#">Bird flu (avian influenza): cases in wild birds (outlook.com)</a></li> <li>• <a href="#">Avian influenza (bird flu) in Europe, Russia and the UK (outlook.com)</a></li> <li>• <a href="#">Avian influenza (influenza A H5N1): technical briefings (outlook.com)</a></li> <li>• <a href="#">National flu and COVID-19 surveillance reports: 2022 to 2023 season (outlook.com)</a></li> <li>• <a href="#">Updating ethnic and religious contrasts in deaths involving the coronavirus (COVID-19), England: 24 January 2020 to 23 November 2022 (outlook.com)</a></li> <li>• <a href="#">Investigation of SARS-CoV-2 variants: technical briefings (outlook.com)</a></li> <li>• <a href="#">Seasonal influenza and COVID-19 vaccine uptake in frontline healthcare workers: monthly data 2022 to 2023 (outlook.com)</a></li> <li>• <a href="#">Avian influenza (influenza A H5N1): technical briefings</a></li> </ul>
UK GOV - General Practice / Primary Care	<ul style="list-style-type: none"> <li>• <a href="#">Appointments in General Practice, January 2023 (outlook.com)</a></li> <li>• <a href="#">General Practice Workforce, 31 January 2023 (outlook.com)</a></li> <li>• <a href="#">Primary Care Network Workforce, 31 January 2023 (outlook.com)</a></li> <li>• <a href="#">GP in-hours: weekly bulletins for 2023 (outlook.com)</a></li> </ul>
UK GOV - Secondary Care	<ul style="list-style-type: none"> <li>• <a href="#">Independent Healthcare Provider Workforce Statistics, September 2022, Experimental (outlook.com)</a></li> </ul>
UK GOV Deaths / Suicide / Palliative Care / Mortality / End of Life	<ul style="list-style-type: none"> <li>• <a href="#">Deaths involving COVID-19 by vaccination status, England: deaths occurring between 1 April 2021 and 31 December 2022 (outlook.com)</a></li> <li>• <a href="#">Monthly mortality analysis, England and Wales: January 2023 (outlook.com)</a></li> <li>• <a href="#">Deaths registered weekly in England and Wales, provisional: week ending 10 February 2023 (outlook.com)</a></li> <li>• <a href="#">Deaths registered by area of usual residence, UK (outlook.com)</a></li> <li>• <a href="#">Weekly all-cause mortality surveillance: 2022 to 2023 (outlook.com)</a></li> </ul>
UK GOV - LTC - including cancer	
Surveillance / Syndromic Surveillance	<ul style="list-style-type: none"> <li>• <a href="#">Syndromic surveillance: weekly summaries for 2023 - GOV.UK (outlook.com)</a></li> <li>• <a href="#">Syndromic surveillance: systems and analyses</a></li> </ul>
Ambulance / Remote Health / 111 / Urgent Care / A&E	<ul style="list-style-type: none"> <li>• <a href="#">Remote health advice: weekly bulletins for 2023 (outlook.com)</a></li> <li>• <a href="#">Emergency department: weekly bulletins for 2023 (outlook.com)</a></li> <li>• <a href="#">National ambulance syndromic surveillance: weekly bulletins 2023 (outlook.com)</a></li> </ul>
UK GOV - Mental Health / Learning Difficulties	
Addiction/Smoking	<ul style="list-style-type: none"> <li>• <a href="#">Drink Coach</a></li> <li>• <a href="#">Stop smoking interventions and services</a></li> <li>• <a href="#">Talk to Frank</a></li> </ul>

<p>UK GOV Infectious Disease Monitoring / NOIDS</p>	<ul style="list-style-type: none"> <li>• <a href="#">UK breeds at risk from exotic animal disease outbreaks (outlook.com)</a></li> <li>• <a href="#">Notifiable diseases: causative agents reports for 2023 (outlook.com)</a></li> <li>• <a href="#">Notifiable diseases: last 52 weeks (outlook.com)</a></li> <li>• <a href="#">Notifiable diseases: weekly reports for 2023 (outlook.com)</a></li> <li>• <a href="#">National norovirus and rotavirus surveillance reports: 2022 to 2023 season (outlook.com)</a></li> <li>• <a href="#">Typhoid and paratyphoid: laboratory confirmed cases in England, Wales and Northern Ireland (outlook.com)</a></li> <li>• <a href="#">Non-statutory zoonoses: disease surveillance reports (outlook.com)</a></li> <li>• <a href="#">how people can help reduce the spread of norovirus (outlook.com)</a></li> <li>• <a href="#">strep a</a></li> <li>• <a href="#">strep a</a></li> <li>• <a href="#">Weekly Statutory Notification of Infectious Diseases (NOIDs) Report (outlook.com)</a></li> <li>• <a href="#">Laboratory confirmed cases of measles, rubella and mumps in England: October to December 2022 (outlook.com)</a></li> </ul>
<p>Immunisation / Travel Health</p>	
<ul style="list-style-type: none"> <li>• <a href="#">Joint Committee on Vaccination and Immunisation</a></li> <li>• <a href="#">Immunisation against infectious disease</a></li> <li>• <a href="#">West Midlands Immunisation Service</a></li> <li>• <a href="#">Vaccination of individuals with uncertain or incomplete immunisation status</a></li> <li>• <a href="#">Immunisation Queries: Immunisation information for Health Care Services within the West Midlands area</a></li> <li>• <a href="#">Immunisation</a></li> <li>• <a href="#">Shingles: the forgotten vaccine during the COVID-19 pandemic (outlook.com)</a></li> <li>• <a href="#">Encourage your older patients to have the shingles vaccine now (outlook.com)</a></li> <li>• <a href="#">data and reports for England on the coverage of vaccinations (outlook.com)</a></li> <li>• <a href="#">Shingles vaccine coverage report (adults eligible from April to June 2022 and vaccinated to the end of September 2022): England</a></li> <li>• <a href="#">Prenatal pertussis vaccination coverage in England from July to September 2022</a></li> </ul>	
<p>Flu</p>	<ul style="list-style-type: none"> <li>• <a href="#">Flu and flu vaccinations</a></li> <li>• <a href="#">The national influenza immunisation programme 2021 to 2022</a></li> <li>• <a href="#">Flu vaccines for the 2021 to 2022 season poster</a></li> <li>• <a href="#">Appendix C: Flu vaccinator competency assessment tool</a></li> <li>• <a href="#">Healthcare assistants and flu vaccinations</a></li> <li>• <a href="#">Seasonal influenza vaccine uptake in GP patients: monthly data, 2022 to 2023 (outlook.com)</a></li> <li>• <a href="#">Seasonal influenza vaccine uptake in children of school age: monthly data, 2022 to 2023 (outlook.com)</a></li> </ul>
<p>Covid Vaccine</p>	<ul style="list-style-type: none"> <li>• <a href="#">Greenbook COVID-19 chapter 14a</a></li> <li>• <a href="#">COVID-19 Vaccine Moderna e-learning now available</a></li> <li>• <a href="#">GP COVID-19 vaccine dashboard</a></li> <li>• <a href="#">Updates made to the COVID-19 vaccination learning programme</a></li> <li>• <a href="#">NHS England » Preparing for a successful spring 2023 COVID-19 booster campaign</a></li> <li>• <a href="#">Spring Covid booster campaign to start in April (cogora.com)</a></li> <li>• <a href="#">coronavirus (COVID-19) vaccination programme (outlook.com)</a></li> </ul>

Children	<ul style="list-style-type: none"> <li>• <a href="#">Child Health Information Services   Local Government Association</a></li> <li>• <a href="#">Childhood vaccines: parental attitudes survey 2022 findings</a></li> <li>• <a href="#">Child imms - QOF (outlook.com) – sign in needed</a></li> <li>• <a href="#">The PIP Talks - Diphtheria and Pertussis</a></li> <li>• <a href="#">The PIP Talks - Haemophilus influenzae type B and Polio</a></li> <li>• <a href="#">Rotavirus and hepatitis B</a></li> <li>• <a href="#">Meningococcal and pneumococcal disease</a></li> <li>• <a href="#">Communication and vaccine confidence</a></li> <li>• <a href="#">Measles, mumps and rubella</a></li> </ul>
Adults	<ul style="list-style-type: none"> <li>• <a href="#">Immunisation patient group direction (PGD) templates</a></li> <li>• <a href="#">Shingles immunisation programme: introduction of Shingrix® letter</a></li> </ul>
Vaccine Update	<ul style="list-style-type: none"> <li>• <a href="#">Vaccine update: issue 332, October 2022, flu special edition - GOV.UK (www.gov.uk)</a></li> <li>• <a href="#">Vaccine update: issue 333, December 2022 - GOV.UK (www.gov.uk)</a></li> <li>• <a href="#">Vaccine update: issue 334, January 2023 (outlook.com)</a></li> <li>• <a href="#">Vaccine update: issue 335, February 2023 (outlook.com)</a></li> </ul>
PGD	
Travel Health	<ul style="list-style-type: none"> <li>• <a href="#">Travel Health Pro</a></li> <li>• <a href="#">Fit for Travel</a></li> <li>• <a href="#">Travel Health</a></li> <li>• <a href="#">Jane Chiodini</a></li> <li>• <a href="#">Corona.Help</a></li> </ul>
<b>Mental Health / Learning Disability / Disability</b>	
Mental Health	<ul style="list-style-type: none"> <li>• <a href="#">Mental Health</a></li> <li>• <a href="#">Mental Health UK</a></li> <li>• <a href="#">Mind</a></li> <li>• <a href="#">Place2b</a></li> <li>• <a href="#">Rethink Mental Illness</a></li> <li>• <a href="#">Young Minds</a></li> <li>• <a href="#">Every Mind Matters</a></li> <li>• <a href="#">Calm</a></li> <li>• <a href="#">Headspace</a></li> <li>• <a href="#">Better Health - Every Mind Matters - Resources</a></li> <li>• <a href="#">ZSA Training</a></li> <li>• <a href="#">NHS &gt; Mental Health</a></li> <li>• <a href="#">Monday 15 May - 1pm-3pm: Mental Health → (chronicconditions.co.uk)</a></li> <li>• <a href="#">Eating disorder services in England 'in crisis', say psychiatrists (independentnurse.co.uk)</a></li> <li>• <a href="#">Digital mental health therapies receive initial approval from NICE (mims.co.uk)</a></li> <li>• <a href="#">Eight digitally enabled therapies to treat depression and anxiety in adults conditionally recommended by NICE   News   News   NICE</a></li> </ul>

Learning Disability	<ul style="list-style-type: none"> <li>• <a href="#">Learning Disabilities</a></li> <li>• <a href="#">Learning Disability England</a></li> <li>• <a href="#">Mencap</a></li> <li>• <a href="#">Bild</a></li> <li>• <a href="#">Autism</a></li> <li>• <a href="#">Transformational reform begins for children and young people with SEND - GOV.UK (www.gov.uk)</a></li> </ul>
Disability (Inc. hearing and visual)	<ul style="list-style-type: none"> <li>• <a href="#">Disability Rights UK</a></li> <li>• <a href="#">Disability Matters</a></li> <li>• <a href="#">RNID - National hearing loss charity</a></li> <li>• <a href="#">Spokzpeople</a></li> <li>• <a href="#">Sight Loss Data Tool   RNIB</a></li> <li>• <a href="#">NHS England » Personal Health Budget (PHB) Quality Framework</a></li> </ul>
From Cradle to...	
Infant Health	<ul style="list-style-type: none"> <li>• <a href="#">Tommys</a></li> <li>• <a href="#">First Steps Nutrition Trust</a></li> <li>• <a href="#">Bliss</a></li> <li>• <a href="#">ICON Toolkit</a></li> <li>• <a href="#">Sandwell - BC - ICB Primary Care - 7 minute briefing</a></li> <li>• <a href="#">Campaign to help parents with introducing babies to solid food - GOV.UK (www.gov.uk)</a></li> </ul>
Child Health	<ul style="list-style-type: none"> <li>• <a href="#">Unicef</a></li> <li>• <a href="#">Health Professional Academy</a></li> <li>• <a href="#">Premature Babies</a></li> <li>• <a href="#">Child and Maternal Health</a></li> <li>• <a href="#">Women and Child First</a></li> <li>• <a href="#">Child Health Information Services</a></li> <li>• <a href="#">Place2b</a></li> <li>• <a href="#">Childhood eczema</a></li> <li>• <a href="#">Childhood asthma</a></li> <li>• <a href="#">Paediatrics for Primary Care (and anyone else) (gppaedstips.blogspot.com)</a></li> <li>• <a href="#">Barnardos</a></li> <li>• <a href="#">Childrens Society</a></li> <li>• <a href="#">Action for Children</a></li> <li>• <a href="#">Hospital tooth extractions in 0 to 19 year olds: 2022 (outlook.com)</a></li> <li>• <a href="#">Childhood vaccines: parental attitudes survey 2022 (outlook.com)</a></li> </ul>
Adolescent Health	<ul style="list-style-type: none"> <li>• <a href="#">Adolescent Health Programme</a></li> <li>• <a href="#">Society for Adolescent Health and Medicine</a></li> <li>• <a href="#">Young Minds</a></li> </ul>

<p>Mens Health</p>	<ul style="list-style-type: none"> <li>• <a href="#">Mens Health Forum</a></li> <li>• <a href="#">Mens Health Month</a></li> <li>• <a href="#">Mens health.org</a></li> <li>• <a href="#">Mens Health UK</a></li> <li>• <a href="#">Men and mental health</a></li> <li>• <a href="#">Men's Mental Health Awareness</a></li> <li>• <a href="#">Prostate Cancer UK</a></li> <li>• <a href="#">Orchid Fighting Male Cancer</a></li> <li>• <a href="#">Prostate Cancer UK Facebook Page</a></li> <li>• <a href="#">Movember</a></li> </ul>
<p>Women's Health</p>	<ul style="list-style-type: none"> <li>• <a href="#">Womens Health Concern</a></li> <li>• <a href="#">Well Being of Women</a></li> <li>• <a href="#">Coppa Feel</a></li> <li>• <a href="#">Menopause Matters</a></li> <li>• <a href="#">The Menopause Charity</a></li> <li>• <a href="#">Royal College of Obstetricians and Gynaecologists - Guidelines</a></li> <li>• <a href="#">Pelvic Partnership</a></li> <li>• <a href="#">CRUK - Womens Cancer</a></li> <li>• <a href="#">Breast Cancer Now</a></li> <li>• <a href="#">Foundation for Women's Cancer</a></li> <li>• <a href="#">Eve Appeal</a></li> <li>• <a href="#">Ovarian.Org</a></li> <li>• <a href="#">Jo's Trust</a></li> <li>• <a href="#">Well Spring</a></li> <li>• <a href="#">Know your Lemons</a></li> <li>• <a href="#">British Menopause Society - <u>www.thebms.org.uk</u></a></li> <li>• <a href="#">NHS - <u>www.nhs.uk/conditions/menopause</u></a></li> <li>• <a href="#">Henpicked - <u>henpicked.net</u></a></li> <li>• <a href="#">The Menopause Exchange - <u>www.menopause-exchange.co.uk</u></a></li> <li>• <a href="#">Women's Health Concerns - <u>www.womens-health-concern.org</u></a></li> <li>• <a href="#">Menopause Matters - <u>www.menopausematters.co.uk</u></a></li> <li>• <a href="#">The Daisy Network - <u>www.daisynetwork.org</u></a></li> <li>• <a href="#">Dr Louise Newson's Menopause Doctor - <u>www.menopausedoctor.co.uk</u></a></li> <li>• <a href="#">Manage My Menopause - <u>www.managemymenopause.co.uk/menopause-advice</u></a></li> <li>• <a href="#">Menopause Support - <u>menopausesupport.co.uk</u></a></li> <li>• <a href="#">Bourne2Care</a></li> <li>• <a href="#">How to manage genitourinary symptoms of menopause (<u>cogora.com</u>)</a></li> <li>• <a href="#">NICE guidance updates criteria for diagnosis of UTI in women (<u>cogora.com</u>)</a></li> <li>• <a href="#">Tampon Tax Fund evaluation design report (<u>outlook.com</u>)</a></li> <li>• <a href="#">NEWS FOCUS (<u>practicenursing.com</u>)</a></li> <li>• <a href="#">Women and migraines: the hormone connection (<u>independentnurse.co.uk</u>)</a></li> </ul>

<p><i>Women's health continued</i></p>	<ul style="list-style-type: none"> <li>• <a href="#">NHS England » Women urged to take up NHS breast screening invites</a></li> <li>• <a href="#">CPD module: Diagnosis and management of endometriosis (cogora.com)</a></li> <li>• <a href="#">Antibiotics of no benefit for children with uncomplicated chest infections (cogora.com)</a></li> <li>• <a href="#">How to manage genitourinary symptoms of menopause (cogora.com)</a></li> <li>• <a href="#">Hundreds of thousands of women experiencing menopause symptoms to get cheaper HRT - GOV.UK (www.gov.uk)</a></li> <li>• <a href="#">Overview   Menopause: diagnosis and management   Guidance   NICE</a></li> <li>• <a href="#">GPnotebook focus on women's health (contains promotional information) (mailchi.mp)</a></li> <li>• <a href="#">Women's Health Strategy (www.gov.uk)</a></li> <li>• <a href="#">self-care factsheet (selfcareforum.org)</a></li> <li>• <a href="#">HRT supply issues continue (mims.co.uk)</a></li> <li>• <a href="#">GPnotebook focus on women's health (contains promotional information) (mailchi.mp)</a></li> <li>• <a href="#">New scheme will provide a year of HRT for price of two prescription charges (independentnurse.co.uk)</a></li> <li>• <a href="#">Women and migraines: the hormone connection (independentnurse.co.uk)</a></li> </ul>
<p>The Older Population</p>	<ul style="list-style-type: none"> <li>• <a href="#">BGS</a></li> <li>• <a href="#">Ageing Better</a></li> <li>• <a href="#">Delirium Champions - YouTube</a></li> <li>• <a href="#">"The crisis in the NHS is largely a crisis in older people's preventive care, and if we're to avoid another catastrophic winter in nine months' time we need to act now to fix it" warns Age UK</a></li> </ul>
<p>Carers / Social Care / Care Homes</p>	<ul style="list-style-type: none"> <li>• <a href="#">The Care Provider Alliance</a></li> <li>• <a href="#">Skills for Care</a></li> <li>• <a href="#">The Care Workers' Charity</a></li> <li>• <a href="#">Supporting Adult Carers</a></li> <li>• <a href="#">The Care UK</a></li> <li>• <a href="#">County Councils Network</a></li> <li>• <a href="#">BREAKING NEWS from The Carer (ourmailsender4.com)</a></li> <li>• <a href="#">Read Issue 137 of The Carer Digital Now! (ourmailsender4.com)</a></li> <li>• <a href="#">BREAKING NEWS from The Carer (ourmailsender4.com)</a></li> <li>• <a href="#">New report   Our 360-degree review of adult social care in England (kingsfundmail.org.uk)</a></li> </ul>
<p>Young Carers</p>	

Family Planning & Sexual Health	
Family Planning	<ul style="list-style-type: none"> <li>• <a href="#">Faculty of Sexual and Reproductive Healthcare Education and Training</a></li> </ul>
Reproductive	<ul style="list-style-type: none"> <li>• <a href="#">Tommys</a></li> </ul>
Sexual Health / Sexual Abuse	<ul style="list-style-type: none"> <li>• <a href="#">Sexual and Reproductive Health Profiles</a></li> <li>• <a href="#">FSRH Education &amp; Training</a></li> <li>• <a href="#">Healthy sex programme: an exploration of pre to post psychological test change (outlook.com)</a></li> </ul>
Maternity / Neonate health	<ul style="list-style-type: none"> <li>• <a href="#">chickenpox in pregnancy (gpnotebook.com)</a></li> </ul>
Care of Patients with Long Term Conditions	
LTC	<ul style="list-style-type: none"> <li>• <a href="#">Physical Activity for the Prevention and Management of Long-Term Conditions</a></li> <li>• <a href="#">Health A to Z</a></li> </ul>
Diabetes & Pre-Diabetes	<ul style="list-style-type: none"> <li>• <a href="#">Mumoactive</a></li> <li>• <a href="#">The mySugr App</a></li> <li>• <a href="#">PCDS Entry level module series - Foot Check</a></li> <li>• <a href="#">Type 2 diabetes in adults: management</a></li> <li>• <a href="#">Diabetes on the Net   Online diabetes journals, education and resources for healthcare professionals.</a></li> <li>• <a href="#">Focus on: Ramadan   GPnotebook Resources</a></li> <li>• <a href="#">NICE now recommends taking a risk-based approach to T2D management</a></li> <li>• <a href="#">Antidiabetic agents, use in renal impairment (outlook.com)</a></li> <li>• <a href="#">NHS programme prevents thousands from developing type 2 diabetes research reveals (independentnurse.co.uk)</a></li> <li>• <a href="#">Diabetes and Ramadan   Fasting   Diabetes UK</a></li> <li>• <a href="#">Tuesday 23 May - 1pm-3pm: Diabetes → (chronicconditions.co.uk)</a></li> </ul>
Respiratory	<ul style="list-style-type: none"> <li>• <a href="#">Spirometry: step by step</a></li> <li>• <a href="#">ARTP</a></li> <li>• <a href="#">British Lung Foundation</a></li> <li>• <a href="#">The Primary Care Respiratory Society</a></li> <li>• <a href="#">Respiratory – Respimat® patient resources   Boehringer Ingelheim (boehringer-ingelheim.com)</a></li> <li>• <a href="#">Respiratory News &amp; Advice   (nursinginpractice.com)</a></li> <li>• <a href="#">Dudley pulmonary rehab - Template PI (dgft.nhs.uk)</a></li> <li>• <a href="#">The triple burden of flu, RSV and COVID-19 - UK Health Security Agency (blog.gov.uk) (outlook.com)</a></li> <li>• <a href="#">NHS England » RightCare community-acquired pneumonia scenario</a></li> <li>• <a href="#">Friday 12 May - 1pm-3pm: Respiratory → (chronicconditions.co.uk)</a></li> <li>• <a href="#">Rotherham Respiratory LTD – Education in Long Term Conditions for Health Care Professionals</a></li> <li>• <a href="#">Nursing In Practice 365: Event Registration - Live &amp; Virtual Events</a></li> </ul>



*Continuation of Long Term Conditions*

COPD	<ul style="list-style-type: none"> <li>• <a href="#">Right Breathe</a></li> <li>• <a href="#">GOLD COPD 2022 strategy   Independent professional body guideline   Guidelines</a></li> </ul>
Asthma	<ul style="list-style-type: none"> <li>• <a href="#">Asthma UK</a></li> <li>• <a href="#">Asthma: diagnosis, monitoring and chronic asthma management</a></li> <li>• <a href="#">Global Initiative for Asthma</a></li> <li>• <a href="#">British guideline on the diagnosis and pharmacological management of asthma in children</a></li> <li>• <a href="#">British Thoracic Society guidelines for home oxygen use in adults: accredited by NICE</a></li> <li>• <a href="#">SIGN and BTS management of asthma in children guideline   Independent professional body guideline   Guidelines</a></li> <li>• <a href="#">new information on inhaler choices (createsend1.com)</a></li> <li>• <a href="#">Delivering high quality, low carbon respiratory care (createsend1.com)</a></li> <li>• <a href="#">Inhaler choices (asthma.org.uk)</a></li> <li>• <a href="#">NHS England » RightCare asthma scenario</a></li> <li>• <a href="#">Advising patients on the management of nocturnal asthma (independentnurse.co.uk)</a></li> </ul>
Hypertension	<ul style="list-style-type: none"> <li>• <a href="#">British Heart Foundation</a></li> <li>• <a href="#">Blood Pressure UK</a></li> <li>• <a href="#">Hypertension in adults: diagnosis and management</a></li> <li>• <a href="#">Hypertension in adults: diagnosis and treatment</a></li> <li>• <a href="#">Hypertension: symptoms to look out for and treatment options (rcni.com)</a></li> </ul>
CVD/AF/DVT	<ul style="list-style-type: none"> <li>• <a href="#">QRISK®3-2018 risk calculator</a></li> <li>• <a href="#">Heart Rhythm Alliance</a></li> <li>• <a href="#">CVD risk assessment and management</a></li> <li>• <a href="#">NHS lipid management pathway   NHS guideline   Guidelines</a></li> <li>• <a href="#">Act F.A.S.T – Stroke campaign</a></li> <li>• <a href="#">Tuesday 16 May - 1pm-3pm: Cardiovascular → (chronicconditions.co.uk)</a></li> <li>• <a href="#">Monitoring requirements for hyperlipidaemia treatments (outlook.com)</a></li> <li>• <a href="#">WebUp Cardiology Expert Forum, 15 March 2023 (cmed.org.uk)</a></li> <li>• <a href="#">updated pathway for lipid management (createsend1.com)</a></li> <li>• <a href="#">NICE endorsed AAC Summary of National Guidance for Lipid Management for Primary and Secondary Prevention of CVD (createsend1.com)</a></li> </ul>
Heart Failure	<ul style="list-style-type: none"> <li>• <a href="#">British Heart Foundation</a></li> <li>• <a href="#">British Society Guidelines</a></li> <li>• <a href="#">Home - Pumping Marvellous</a></li> <li>• <a href="#">Heart Failure UK Guidelines</a></li> <li>• <a href="#">Can you recognise hypertrophic cardiomyopathy (HCM)?</a></li> </ul>

*Continuation of Long Term Conditions*

Cancer / Oncology	<ul style="list-style-type: none"> <li>• <a href="#">Surviving Thyroid Cancer</a></li> <li>• <a href="#">Help Us Help You - Lung Cancer Symptoms</a></li> <li>• <a href="#">Breast Cancer Now</a></li> <li>• <a href="#">Macmillian</a></li> <li>• <a href="#">Bowel Cancer UK</a></li> <li>• <a href="#">Brain Trust</a></li> <li>• <a href="#">CRUK</a></li> <li>• <a href="#">Action Cancer</a></li> <li>• <a href="#">Foundation for Women's Cancer</a></li> <li>• <a href="#">NHS England » Cancer</a></li> <li>• <a href="#">Wednesday 10 May - 1pm-3pm: Oncology → (chronicconditions.co.uk)</a></li> </ul>
Chronic Kidney Disease	<ul style="list-style-type: none"> <li>• <a href="#">Kidney.Org</a></li> <li>• <a href="#">Kidney Quality Improvement Partnership</a></li> <li>• <a href="#">Friday 19 May - 1pm-3pm: Renal → (chronicconditions.co.uk)</a></li> <li>• <a href="#">Antidiabetic agents, use in renal impairment (outlook.com)</a></li> </ul>
Liver Disease	<ul style="list-style-type: none"> <li>• <a href="#">British Liver Trust</a></li> <li>• <a href="#">Liver Research</a></li> <li>• <a href="#">BRITISH ASSOCIATION FOR THE STUDY OF THE LIVER</a></li> <li>• <a href="#">LIVERNORTH</a></li> <li>• <a href="#">LIVER DISEASE AND CIRRHOSIS</a></li> </ul>
Blood Disorders	<ul style="list-style-type: none"> <li>• <a href="#">Blood Cancer UK</a></li> <li>• <a href="#">UK Thalassaemia Society</a></li> <li>• <a href="#">The ITP Support Association</a></li> <li>• <a href="#">UK-ITP Paediatric ITP Registry</a></li> <li>• <a href="#">The Haemophilia Society</a></li> <li>• <a href="#">UK MDS Forum</a></li> <li>• <a href="#">Pernicious Anaemia Society</a></li> <li>• <a href="#">Haemochromatosis UK</a></li> <li>• <a href="#">NHS Blood and Transplant</a></li> <li>• <a href="#">GPnotebook focus on haematology (campaign-archive.com)</a></li> </ul>

*Continuation of Long Term Conditions*





G.I	<ul style="list-style-type: none"> <li>• <a href="#">GIST Cancer UK</a></li> <li>• <a href="#">Pernicious Anaemia Society</a></li> <li>• <a href="#">Crohns and Colitis</a></li> <li>• <a href="#">guidance for monitoring in Barrett's oesophagus (gpnotebook.com)</a></li> </ul>
ENT	
G.U	
ME / CFS / Fibromyalgia	<ul style="list-style-type: none"> <li>• <a href="#">ME Association</a></li> <li>• <a href="#">ME Research</a></li> <li>• <a href="#">Action for M.E</a></li> <li>• <a href="#">Fibromyalgia Action UK</a></li> <li>• <a href="#">Fibromyalgia UK</a></li> <li>• <a href="#">Home - Fibromyalgia Awareness UK (fibroawarenessuk.org)</a></li> <li>• <a href="#">Fibromyalgia - Symptoms, diagnosis and treatment   BMJ Best Practice</a></li> <li>• <a href="#">Fibromyalgia - The Brain Charity</a></li> </ul>
Neurological Conditions	<ul style="list-style-type: none"> <li>• <a href="#">The Brain Tumour Charity</a></li> <li>• <a href="#">Narcolepsy.Org</a></li> <li>• <a href="#">ACNR</a></li> <li>• <a href="#">MS Society UK   Information, research and support   Multiple Sclerosis Society UK</a></li> <li>• <a href="#">Home   MS Trust</a></li> <li>• <a href="#">Parkinson's UK story (createsend1.com)</a></li> </ul>
Musculoskeletal Conditions	<ul style="list-style-type: none"> <li>• <a href="#">Rheumatology</a></li> <li>• <a href="#">National Axial Spondyloarthritis Society</a></li> <li>• <a href="#">Musculoskeletal health</a></li> <li>• <a href="#">Musculoskeletal health: 5 year prevention strategic framework</a></li> <li>• <a href="#">Faculty of Occupational Medicine</a></li> <li>• <a href="#">Guide to embedding your first contact physiotherapy service</a></li> </ul>

*Continuation of Long Term Conditions*

<p>Endocrine Disorders / Metabolic Disorders</p>	<ul style="list-style-type: none"> <li>• <a href="#">Society for Endocrinology</a></li> <li>• <a href="#">Turner Syndrome Support Society</a></li> <li>• <a href="#">Thyroid Eye Disease</a></li> <li>• <a href="#">British Thyroid Foundation</a></li> <li>• <a href="#">Thyroid UK</a></li> <li>• <a href="#">The Pituitary Foundation</a></li> <li>• <a href="#">Addisons Disease</a></li> <li>• <a href="#">Parathyroid UK</a></li> <li>• <a href="#">The Royal Osteoporosis Society</a></li> <li>• <a href="#">Metabolic Support UK</a></li> </ul>
<p>Frailty</p>	<ul style="list-style-type: none"> <li>• <a href="#">Recognising frailty</a></li> <li>• <a href="#">Identifying frailty</a></li> <li>• <a href="#">CLINICAL FRAILTY SCALE</a></li> </ul>
<p>Dementia / Alzheimers</p>	<ul style="list-style-type: none"> <li>• <a href="#">Dementia UK</a></li> <li>• <a href="#">Age UK - Understanding Dementia</a></li> <li>• <a href="#">Delirium Champions</a></li> <li>• <a href="#">Alzheimers Society</a></li> </ul>
<p>Allergy / Auto-immune / Genetic Conditions</p>	<ul style="list-style-type: none"> <li>• <a href="#">Allergy UK</a></li> <li>• <a href="#">British Society for Rheumatology</a></li> <li>• <a href="#">Addisons Disease</a></li> </ul>

*Continuation of Long Term Conditions*

Dermatology	<ul style="list-style-type: none"> <li>• <a href="#">British Association of Dermatologists</a></li> <li>• <a href="#">Eczema</a></li> <li>• <a href="#">The British Skin Foundation</a></li> <li>• <a href="#">Acne vulgaris: management</a></li> <li>• <a href="#">The Primary Care Dermatology Society</a></li> <li>• <a href="#">Acne.org</a></li> <li>• <a href="#">Allergy UK</a></li> <li>• <a href="#">Urticaria</a></li> <li>• <a href="#">Hives</a></li> <li>• <a href="#">Sunburn</a></li> <li>• <a href="#">Causes of cancer and reducing your risk</a></li> <li>• <a href="#">What is Rosacea?</a></li> <li>• <a href="#">Rosecea</a></li> <li>• <a href="#">The Rosacea Forum</a></li> <li>• <a href="#">Herpes Viruses Association</a></li> <li>• <a href="#">Shingles</a></li> <li>• <a href="#">Fungal Skin Infection - Foot</a></li> <li>• <a href="#">The Psoriasis Association</a></li> <li>• <a href="#">National Psoriasis Foundation</a></li> <li>• <a href="#">Melanoma</a></li> <li>• <a href="#">Skin Health Information</a></li> <li>• <a href="#">British Association of Plastic Reconstructive and Aesthetic Surgeons - Procedure Guides</a></li> <li>• <a href="#">Warts and verrucae</a></li> <li>• <a href="#">Dermatology</a></li> <li>• <a href="#">Home - Hyperhidrosis UK</a></li> </ul>
Obesity	<ul style="list-style-type: none"> <li>• <a href="#">Obesity UK</a></li> <li>• <a href="#">Thursday 25 May - 1pm-3pm: Obesity → (chronicconditions.co.uk)</a></li> <li>• <a href="#">Version 2 referral template for the NHS Digital Weight Management Programme</a></li> </ul>
Pain Management	<ul style="list-style-type: none"> <li>• <a href="#">Pain Concern</a></li> <li>• <a href="#">Post-herpetic neuralgia: The painful aftermath of shingles (outlook.com)</a></li> <li>• <a href="#">Pain relief in the treatment of shingles: a guide for nurses (outlook.com)</a></li> </ul>
Osteoporosis / Falls	<ul style="list-style-type: none"> <li>• <a href="#">Preventing Falls in Older People - Inside Government</a></li> </ul>

<i>Continuation of Long Term Conditions</i>	
Genomics / Genetics	<ul style="list-style-type: none"> <li>• <a href="https://www.gov.uk/government/policies/rare-diseases">England Rare Diseases Action Plan to tackle health inequalities - GOV.UK (www.gov.uk)</a></li> </ul>
Loneliness	<ul style="list-style-type: none"> <li>• <a href="https://www.outlook.com/health/loneliness/">Loneliness (outlook.com)</a></li> </ul>
Multi-Morbidity / Complex Needs	<ul style="list-style-type: none"> <li>• <a href="#">Multimorbidity</a></li> <li>• <a href="#">Multimorbidity / multiple long-term conditions (MLTC)</a></li> </ul>
Minor Illness / First Contact Assessment / OSCE	<ul style="list-style-type: none"> <li>• <a href="#">Fact Sheets - Self Care Forum</a></li> <li>• <a href="#">OSCE Checklists  (mlsend.com)</a></li> <li>• <a href="#">OSCE Flashcards  (mlsend.com)</a></li> <li>• <a href="#">600+ OSCE Stations  (mlsend.com)</a></li> <li>• <a href="#">Anatomy Flashcards  (mlsend.com)</a></li> <li>• <a href="#">Health A to Z</a></li> <li>• <a href="#">#EM3: East Midlands Emergency Medicine Educational Media</a></li> <li>• <a href="#">Nursing In Practice Reference – Apps on Google Play</a></li> <li>• <a href="#">Nursing In Practice Reference on the App Store (apple.com)</a></li> <li>• <a href="#">NHS England » NHS launches ad campaign as just one in five would visit high-street pharmacy for minor illnesses</a></li> <li>• <a href="#">Shingles in adults: what the practice nurse needs to know (outlook.com)</a></li> <li>• <a href="#">UK guidelines for the management of contacts of invasive group A streptococcus (iGAS) infection in community settings</a></li> <li>• <a href="#">UK Standards for Microbiology Investigations: Sepsis and systemic or disseminated infections</a></li> </ul>
Other / Case Studies	
Winter / Summer Pressures	

End of Life Care	
End of Life Care / Bereavement / Organ Donation	<ul style="list-style-type: none"> <li>• <a href="#">ReSPECT for healthcare professionals</a></li> <li>• <a href="#">Hospice UK</a></li> <li>• <a href="#">Palliative and End of Life Care Profiles - OHID (phe.org.uk)</a></li> </ul>
Flu / Covid-19 / Monkeypox	
Covid-19	
Flu	
Long covid	<ul style="list-style-type: none"> <li>• <a href="#">Your Covid Recovery</a></li> <li>• <a href="#">Long Term Effects of Covid</a></li> <li>• <a href="#">Post Covid Syndrome - Long Covid</a></li> <li>• <a href="#">COVID-19 Yorkshire Rehabilitation Screening Tool</a></li> <li>• <a href="#">FOM Guidance</a></li> <li>• <a href="#">Long Covid Toolkit</a></li> <li>• <a href="#">Caring for People with Long Covid (qni.org.uk)</a></li> <li>• <a href="#">Long Covid</a></li> </ul>
Monkey Pox	<ul style="list-style-type: none"> <li>• <a href="#">UK Strategy for Mpox Control 2022-23 (outlook.com)</a></li> </ul>
News & Views	
Digital News / Remote Consultations / AI	<ul style="list-style-type: none"> <li>• <a href="#">Digital Health News Webinars</a></li> <li>• <a href="#">Digital Health News</a></li> <li>• <a href="#">NHS Digital</a></li> <li>• <a href="#">DigiHealthWell</a></li> <li>• <a href="#">Public Sector Events, Conferences and Training - Inside Government</a></li> <li>• <a href="#">Digital Transformation</a></li> <li>• <a href="#">Networks Newsletter: 27 February 2023 #Rewired23 Special (mailchi.mp)</a></li> <li>• <a href="#">Home   Digital Health</a></li> <li>• <a href="#">Weekly Digest Newsletter: 28 February 2023 (govdelivery.com)</a></li> <li>• <a href="#">Welcome to The Digital Healthcare Show part of Health+Care (healthpluscare.co.uk)</a></li> <li>• <a href="#">Digital Health Digest (kingsfundmail.org.uk)</a></li> <li>• <a href="#">Digital Health News - 2 March 2023 (mailchi.mp)</a></li> <li>• <a href="#">Your daily news updates from Digital Health (campaign-archive.com)</a></li> <li>• <a href="#">[Webinar] Role of the CAHIO and being a digital AHP leader (mailchi.mp)</a></li> <li>• <a href="#">The latest news from The Digital Healthcare Show 2023</a></li> <li>• <a href="#">Digital Health Digest - 3 March 2023 (mailchi.mp)</a></li> </ul>

PSNC News / Pharmacy	<ul style="list-style-type: none"> <li>• <a href="#">National Pharmacy Association</a></li> <li>• <a href="#">Royal Pharmaceutical Society</a></li> <li>• <a href="#">Medicines Learning Portal</a></li> <li>• <a href="#">Specialist Pharmacy Service</a></li> <li>• <a href="#">PSNC Newsletter: 27th February (mailchi.mp)</a></li> <li>• <a href="#">NHS England » NHS launches ad campaign as just one in five would visit high-street pharmacy for minor illnesses</a></li> <li>• <a href="#">February 2023 Price Concessions Final Update (mailchi.mp)</a></li> <li>• <a href="#">PSNC Newsletter: 1st March (mailchi.mp)</a></li> <li>• <a href="#">Digital Health News - 2 March 2023 (mailchi.mp)</a></li> <li>• <a href="#">Reminder: Dexcom One Transmitter added to March 2023 Drug Tariff - PSNC Website</a></li> </ul>
Pulse / GP Online / HSJ / NB Medical / 60 Second GP	<ul style="list-style-type: none"> <li>• <a href="#">GP Online</a></li> <li>• <a href="#">HSJ</a></li> <li>• <a href="#">Pulse Today</a></li> </ul>
Primary Care Update / PCC / PPP	<ul style="list-style-type: none"> <li>• <a href="#">Public Policy Projects News</a></li> <li>• <a href="#">Primary Care Bulletin</a></li> <li>• <a href="#">Primary Care Improvement Community Newsletter</a></li> </ul>
Proactive Care	
Kings Fund	<ul style="list-style-type: none"> <li>• <a href="#">The Kings Fund</a></li> <li>• <a href="#">Library services   The King's Fund (kingsfund.org.uk)</a></li> <li>• <a href="#">Health Management and Policy Alert: 28 February 2023 (kingsfundmail.org.uk)</a></li> <li>• <a href="#">Digital Health Digest (kingsfundmail.org.uk)</a></li> <li>• <a href="#">Where does primary care fit within new system working? (kingsfundmail.org.uk)</a></li> <li>• <a href="#">New report   Our 360-degree review of adult social care in England (kingsfundmail.org.uk)</a></li> <li>• <a href="#">Health Management and Policy Alert: 3 March 2023 (kingsfundmail.org.uk)</a></li> <li>• <a href="#">Your events update   March 2023 (kingsfundmail.org.uk)</a></li> <li>• <a href="#">Social care staff vacancy rate now the highest since records began: why? (kingsfundmail.org.uk)</a></li> </ul>
Health Care Leaders Newsletters	
World Health Organisation	<ul style="list-style-type: none"> <li>• <a href="#">WHO</a></li> <li>• <a href="#">OpenWHO</a></li> </ul>



<p>IHCT / CCG / STP / Healthier Futures</p>	<ul style="list-style-type: none"> <li>• <a href="#">Black Country &amp; West Birmingham CCG</a></li> <li>• <a href="#">Dudley Integrated Health and Care</a></li> <li>• <a href="#">Home :: Black Country Healthcare NHS Foundation Trust</a></li> <li>• <a href="#">SharePoint</a></li> <li>• <a href="#">Message from Mark Axcell &amp; Staff News (02 March 2023) (sharepoint.com)</a></li> <li>• <a href="#">Message from Sally Roberts &amp; Staff News (23 February 2023) (sharepoint.com)</a></li> <li>• <a href="#">Message from Mark Axcell &amp; Staff News (16 February 23) (sharepoint.com)</a></li> <li>• <a href="#">Message from Mark Axcell &amp; Staff News (09 February 2023) (sharepoint.com)</a></li> <li>• <a href="#">Message from Mark Axcell &amp; Staff News (02 February 2023) (sharepoint.com)</a></li> <li>• <a href="#">Message from Mark Axcell &amp; Staff News (19 January 2023) (sharepoint.com)</a></li> <li>• <a href="#">Message from Mark Axcell &amp; Staff News (26 January 2023) (sharepoint.com)</a></li> <li>• <a href="#">Message from Mark Axcell &amp; Staff News (12 January 2023) (sharepoint.com)</a></li> <li>• <a href="#">Issue 34 - Black Country Primary Care Brief (sharepoint.com)</a></li> <li>• <a href="#">Issue 33 - Black Country Primary Care Brief (sharepoint.com)</a></li> <li>• <a href="#">Issue 31 - Black Country Primary Care Brief (sharepoint.com)</a></li> <li>• <a href="#">Issue 31 - Black Country Primary Care Brief (sharepoint.com)</a></li> <li>• <a href="#">Issue 30 - Black Country Primary Care Brief (sharepoint.com)</a></li> <li>• <a href="#">Issue 29 - Black Country Primary Care Brief (sharepoint.com)</a></li> <li>• <a href="#">Issue 28 - Black Country Primary Care Brief (sharepoint.com)</a></li> <li>• <a href="#">Issue 27 - Black Country Primary Care Brief (sharepoint.com)</a></li> <li>• <a href="#">Issue 26: Black Country Primary Care Brief (sharepoint.com)</a></li> </ul>
<p>NHSI / NHSE</p>	<ul style="list-style-type: none"> <li>• <a href="#">NHS England</a></li> <li>• <a href="#">NHS England » NHS Digital merges with NHS England</a></li> </ul>
<p>University / Student Nurses</p>	
<p>Medisa / Univadis / Geeky Medics / GP Notebook / Medscape</p>	<ul style="list-style-type: none"> <li>• <a href="#">Medisa</a></li> <li>• <a href="#">Geeky Medics</a></li> <li>• <a href="#">Medscape Nurses</a></li> <li>• <a href="#">GP Notebook</a></li> <li>• <a href="#">Geeky Medics - YouTube</a></li> <li>• <a href="#">GPnotebook focus on women's health (contains promotional information) (mailchi.mp)</a></li> </ul>
<p>Nurse Guidelines</p>	
<p>The Health Foundation</p>	<ul style="list-style-type: none"> <li>• <a href="#">The Health Foundation</a></li> <li>• <a href="#">Newsletter: It's time to act on health (healthfdn.org.uk)</a></li> <li>• <a href="#">NEW: Realising the potential of multidisciplinary teams (healthfdn.org.uk)</a></li> </ul>

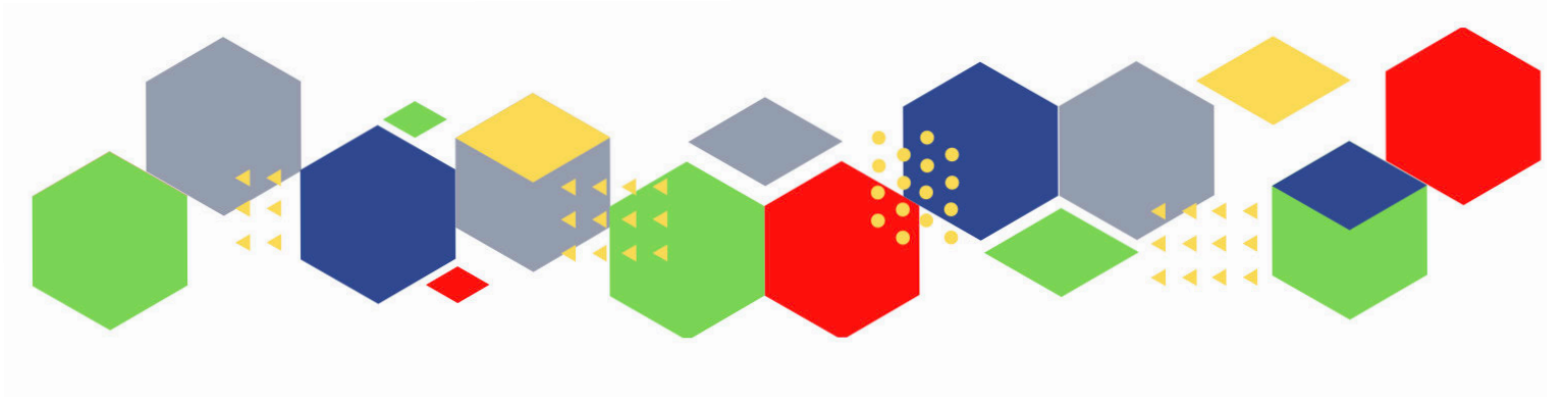
*Continuation of News & Views*

The Health Care Leaders Update	<ul style="list-style-type: none"> <li>• <a href="#">Health Care Leader News</a></li> </ul>
Practice Index	
Innovation Agency	<ul style="list-style-type: none"> <li>• <a href="#">Innovation Agency Exchange</a></li> <li>• <a href="#">Newsletter   March 2023 (campaign-archive.com)</a></li> </ul>
RCN	<ul style="list-style-type: none"> <li>• <a href="#">RCN</a></li> </ul>
Cavell Trust	
Nursing in Practice / Nursing Standard / Independent Nurse	<ul style="list-style-type: none"> <li>• <a href="#">Nursing Times</a></li> <li>• <a href="#">JCN Newsletter</a></li> <li>• <a href="#">Nursing in Practice Bulletin</a></li> <li>• <a href="#">Nursing in Practice Community Bulletin</a></li> <li>• <a href="#">Nursing in Practice Clinical Bulletin</a></li> <li>• <a href="#">Independent Nurse</a></li> </ul>
QNI	<ul style="list-style-type: none"> <li>• <a href="#">QNI</a></li> <li>• <a href="#">Talk To Us © – The Queen's Nursing Institute (qni.org.uk)</a></li> <li>• <a href="#">Draft QNI Field Specific SPQ Standards</a></li> </ul>
NMC	<ul style="list-style-type: none"> <li>• <a href="#">NMC</a></li> </ul>
CMO / CNO	<ul style="list-style-type: none"> <li>• <a href="#">Chief medical officer   Institute for Government</a></li> <li>• <a href="#">NHS England » Chief Nursing Officer for England</a></li> </ul>
HRA	<ul style="list-style-type: none"> <li>• <a href="#">HRA Latest</a></li> </ul>
Nice	<ul style="list-style-type: none"> <li>• <a href="#">NICE</a></li> </ul>
RCGP / BMA / The Lancet	<ul style="list-style-type: none"> <li>• <a href="#">The Lancet</a></li> <li>• <a href="#">British Medical Journal</a></li> <li>• <a href="#">Royal College of General Practitioners</a></li> <li>• <a href="#">British Journal of General Practice</a></li> </ul>

<i>Continuation of News &amp; Views</i>	
Nuffield Health	<ul style="list-style-type: none"> <li>• <a href="#">Home   The Nuffield Trust</a></li> </ul>
Midlands Academic Health Science Network	<ul style="list-style-type: none"> <li>• <a href="#">WMAHSN Network</a></li> </ul>
Healthwatch	<ul style="list-style-type: none"> <li>• <a href="#">Healthwatch</a></li> </ul>
CPD News	<ul style="list-style-type: none"> <li>• <a href="#">CPD News</a></li> </ul>
Inside Government	<ul style="list-style-type: none"> <li>• <a href="#">Inside Government - Public and Voluntary Sector Events and Resources</a></li> </ul>
NHS Resolution	
Other	<ul style="list-style-type: none"> <li>• <a href="#">Patients Association</a></li> <li>• <a href="#">Request Support Services   Volunteer Responders (nhsvolunteerresponders.org.uk)</a></li> </ul>
Free Training / Webinars / Meetings / CPD	
Development / Information and Knowledge	<ul style="list-style-type: none"> <li>• <a href="#">Red Whale Training</a></li> <li>• <a href="#">Issues &amp; Answers</a></li> <li>• <a href="#">Best Practice in delivery and management of immunisation services (mahealthcareevents.co.uk)</a></li> <li>• <a href="#">Your personal invitation to Best Practice London 2023 (bestpracticeshow.co.uk)</a></li> <li>• <a href="#">UK Care Week Wednesday 22nd March 2023 Thursday 23rd March 2023 NEC, Birmingham</a></li> <li>• <a href="#">PCN Study Day 2023 - Respiratory (mahealthcareevents.co.uk)</a></li> <li>• <a href="#">Innovative solutions for your practice (bestpracticeshow.co.uk)</a></li> <li>• <a href="#">Early bird tickets now available (kingsfundmail.org.uk)</a></li> <li>• <a href="#">UK Care Week 22-23/3/23 NEC</a></li> <li>• <a href="#">Nursing in Practice Virtual: Respiratory (outlook.com) 4 April 2023</a></li> <li>• <a href="#">Nursing in Practice Virtual: Public Health &amp; Immunisations (outlook.com) 13 June 2023</a></li> <li>• <a href="#">Career Pathway, Core Cancer Capabilities in Practice (CiP) and Education Framework for the Nursing and Allied Health Professions Workforce (outlook.com)</a></li> <li>• <a href="#">visit the HEE ACCEND webpage (outlook.com)/ watching a short, online presentation (outlook.com)</a></li> <li>• <a href="#">NAFLD or MAFLD: should you care? (mahealthcareevents.co.uk)</a></li> <li>• <a href="#">CPD CERTIFIED CONFERENCE, 15TH MARCH 2023, LONDON</a></li> <li>• <a href="#">Best Practice in delivery and management of immunisation services (mahealthcareevents.co.uk)</a></li> <li>• <a href="#">Clinical Characteristics of Convexity Webinar - Register now (mahealthcareevents.co.uk)</a></li> </ul>

<i>Development / Workshops / Webinars / Information and Knowledge Continued</i>	<ul style="list-style-type: none"> <li>• <a href="#">NHS ConfedExpo 2023 (outlook.com)</a></li> <li>• <a href="#">Thursday 30 March from 1pm to 2pm: A key to delivering Population Health Management</a></li> <li>• <a href="#">NHS ConfedExpo 2023 (createsend1.com)</a></li> <li>• <a href="#">Learning from Deaths in Healthcare (outlook.com)22nd March</a></li> <li>• <a href="#">Clinical Characteristics of Convexity Webinar - Register now (mahealthcareevents.co.uk)</a></li> </ul>
Free to RCN	<ul style="list-style-type: none"> <li>• <a href="#">RCNi events   RCNi</a></li> </ul>
MIMMs Learning	
Eventbrite	<ul style="list-style-type: none"> <li>• <a href="#">Part 3 - Case studies in hyperkalaemia Registration, Mon 27 Mar 2023 at 20:00   Eventbrite</a></li> </ul>
e-Learning for Health	
Skills for Health	<ul style="list-style-type: none"> <li>• <a href="#">Specialist eLearning for health and care professionals (mailchi.mp)</a></li> </ul>
YouTube	<ul style="list-style-type: none"> <li>• <a href="#">NHS England</a></li> <li>• <a href="#">Black Country Healthcare - YouTube</a></li> </ul>
Podcasts	<ul style="list-style-type: none"> <li>• <a href="#">The Nursing Handover Podcast</a></li> <li>• <a href="#">Nursing Standard Podcasts</a></li> <li>• <a href="#">Nursing Matters</a></li> <li>• <a href="#">Welcome to the BJN Podcast</a></li> <li>• <a href="#">Cygnet Health Care Podcast</a></li> <li>• <a href="#">EBN podcast</a></li> <li>• <a href="#">This Is Nursing</a></li> <li>• <a href="#">Teach me, I'm a Nurse</a></li> <li>• <a href="#">Past Caring</a></li> <li>• <a href="#">RCGP eLearning podcast</a></li> <li>• <a href="#">The BMJ Podcast</a></li> <li>• <a href="#">Primary Care Network podcasts</a></li> <li>• <a href="#">The Professional Support Unit's Pandemic Podcast</a></li> <li>• <a href="#">The Next GenCast</a></li> <li>• <a href="#">Stream on Spotify here (outlook.com)</a></li> </ul>

Future Proof Health Training	<ul style="list-style-type: none"> <li>• <a href="#">Training</a></li> </ul>
BCWB Training Hub	<ul style="list-style-type: none"> <li>• <a href="#">Black Country Communications Toolkit - 17 Feb 2023 (mailchi.mp)</a></li> </ul>
Evidence based care	
Apps	
Area Bulletins	
Research	<ul style="list-style-type: none"> <li>• <a href="#">Science Daily</a></li> <li>• <a href="#">Multimorbidity / multiple long-term conditions (MLTC)</a></li> <li>• <a href="#">National Institute for Health and Care Research</a></li> <li>• <a href="#">NHS Knowledge and Library Hub - Knowledge and Library Services</a></li> <li>• <a href="#">Download the quick reference guide (createsend1.com)</a></li> </ul>
Blogs/Vlogs	<ul style="list-style-type: none"> <li>• <a href="#">Blog   NB Medical</a></li> <li>• <a href="#">Climate and health security: Looking ahead to 2023 - UK Health Security Agency (blog.gov.uk)</a></li> <li>• <a href="#">The triple burden of flu, RSV and COVID-19 - UK Health Security Agency (blog.gov.uk)</a></li> <li>• <a href="#">Making progress on the global mission to develop pandemic-fighting tools within 100 days - UK Health Security Agency (blog.gov.uk)</a></li> <li>• <a href="#">Back to school - 5 things to do to help manage winter illness - UK Health Security Agency (blog.gov.uk)</a></li> <li>• <a href="#">Group A Strep - What you need to know - UK Health Security Agency (blog.gov.uk)</a></li> <li>• <a href="#">Click here to watch the vlog on YouTube (outlook.com)</a></li> </ul>
Freebies	<ul style="list-style-type: none"> <li>• <a href="#">Blue Light Card</a></li> </ul>
Campagne Links	<ul style="list-style-type: none"> <li>• <a href="#">2023 D&amp;I Calendar (hubspotusercontent-eu1.net)</a></li> </ul>
Other	



Thank you for reading Future Proof Health's weekly news!

If you missed past issues, please click [here](#) to view them

More information can be found on our website, [here](#)

Don't forget to like us on [Facebook](#) & Follow us on [Twitter](#)

