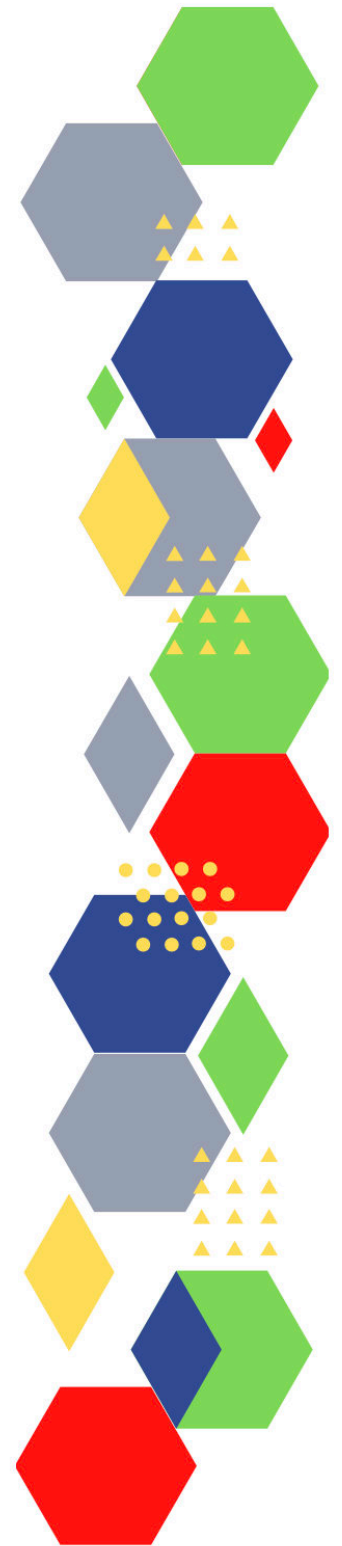
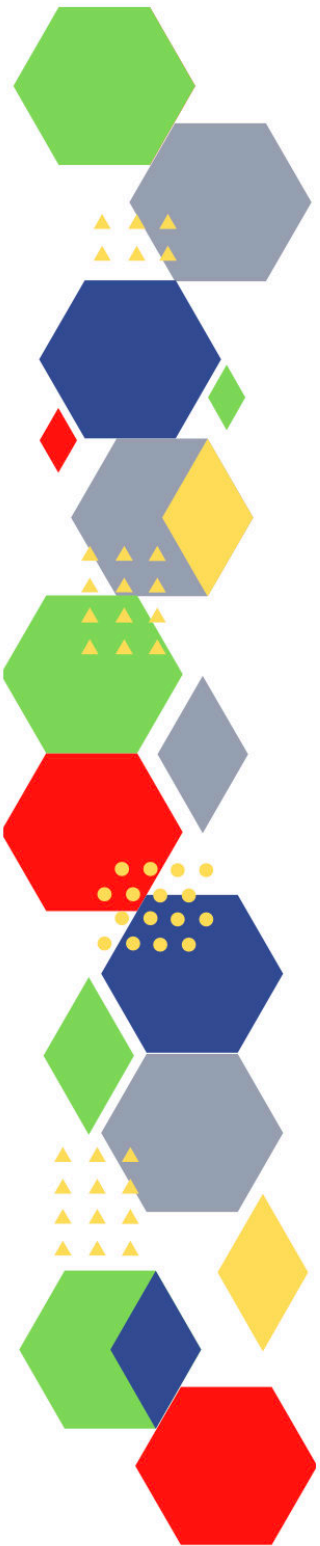




Future Proof Health Presents

Weekly News

16th September 2022



Communication	
Communication with Patients	
Communication within Teams	
Consent	<ul style="list-style-type: none"> • Gillick competency and Fraser guidelines • ReSPECT for healthcare professionals
People and Personal Development	
Personal / People Development / Leadership	<ul style="list-style-type: none"> • Accountability and delegation in practice
NHS Employers / HR / NHS Pension	<ul style="list-style-type: none"> • NHS Employers • Pensions Online
Health, Safety & Security	
	<ul style="list-style-type: none"> • NPSA • Control of Substances Hazardous to Health (COSHH) • Weekly Digest Newsletter: 8 September 2022 (govdelivery.com)
Gov UK - NHS	
CQC	<ul style="list-style-type: none"> • GP mythbusters • Prescribing the resolution of conflict in general practice • CQC in focus - Youtube • CQC update for primary medical and dental services (govdelivery.com) • Ardens CQC
MIMS	<ul style="list-style-type: none"> • Prescribing Update
Antibiotic steward-ship / Anti-microbial resistance	<ul style="list-style-type: none"> • v Research update: Social factors in remote consulting and antibiotic prescribing (nursinginpractice.com) • Antibiotic Guardian WAAW 2021 Online Knowledge Cafe <p>#AntibioticGuardain #KeepAntibioticsWorking #WAAW2022</p>

Drug / Device Alerts (MHRA)	<ul style="list-style-type: none"> • Drug Safety Update (mhradrugsafety.org.uk)
Emergency Situations	<ul style="list-style-type: none"> • Resuscitation Council UK
Infection Control / Infection Statics	<ul style="list-style-type: none"> • NHS England » National infection prevention and control • Vulnerable consumers advised of ongoing risk of Listeria associated with ready to eat smoked fish Food Standards Agency • Clostridioides difficile infection: guidance on management and treatment - GOV.UK (www.gov.uk)
Vaccines / Medications / Prescribing	<ul style="list-style-type: none"> • Protocol for ordering, storing and handling vaccines • A Competency Framework for all Prescribers • Non-medical prescribing • The Human Medicines Regulations 2012 • RCN - Non-medical prescribers • Royal Pharmaceutical Society • Standards for prescribing • Clinical Negligence Scheme for General Practice • Home - electronic medicines compendium (emc) • Drug shortages - live tracker MIMS online • Polypharmacy Programme: getting the balance right - AHSN Network
Safe Guarding	<ul style="list-style-type: none"> • Female genital mutilation (FGM) • PREVENT • Child protection system in the UK • Safeguarding Adults • Safeguarding children: detailed information • Domestic abuse victim services, England and Wales: 2022 (www.gov.uk) • Wolverhampton only - WST Training Update - September 2022 (govdelivery.com)
Practice Policies	<ul style="list-style-type: none"> • Bureaucracy busting concordat: principles to reduce unnecessary bureaucracy and administrative burdens on general practice - GOV.UK (www.gov.uk) • GP practice readiness checklist - NHS Digital
Audit	
Information Governance / Record Keeping	<ul style="list-style-type: none"> • Guide to Data Protection • Supporting general practice – Medical record keeping • PRSB Newsletter: August 2022 (theprsb.org)

Quality & Service Improvement	
Quality, Service & Improvement	<ul style="list-style-type: none"> • The PRSB • General Practice Assessment Questionnaire (GPAQ) • Healthwatch • NHS Five Year Forward View • General Practice Forward View • NMC • Dr Jon Griffiths Blog • NHS Confed • Practice Nursing - Prescribing the resolution of conflict in general practice • NHS England » Guidance on implementing the Friends and Family Test
Roles in General Practice	<ul style="list-style-type: none"> • Standards for nursing associates • GP mythbuster 57: Health Care Assistants in General Practice • Practice Nursing - Dispelling the myths around the role of a general practice nurse - may need sign in • Dietitians: roles in the community and contribution to patient care (practicenursing.com) - may need sign in
Revalidation	
Personal Practice & Development	<ul style="list-style-type: none"> • General practice nursing capabilities framework - Skills for Health (createsend1.com)
Practice Management	<ul style="list-style-type: none"> • Institute of General Practice Management • Practice Index • CQRS Local - CSU Collaborative
Employment / Retirement / Legacy Nursing	
NHS Self Care & Resilience	<ul style="list-style-type: none"> • Samaritans • Mental Health at work • Calm • Supporting our NHS people • The Hub :: Black Country Healthcare NHS Foundation Trust • NHS England » Looking after you too • Nurse well-being: practical support for your mental health (rcni.com)
Practice Transformation / Innovation Agency	<ul style="list-style-type: none"> • Video group consultations take centre stage (practicenursing.com) – may need sign in • GP Online Services clinical system configuration: Immediate action required - NHS Digital • VCSE Procurement (publishing.service.gov.uk)

<p>Future of NHS / General Practice / NHS Recovery</p>	<ul style="list-style-type: none"> • NHS England • NHS England » Primary care • NHS mandate 2022 to 2023 • Public perceptions of health and social care: what the new government should know - The Health Foundation • Plans to pay care homes to free up hospital beds must be well-funded, says social care leader (cogora.com) • NHS England » NHS delivers on elective recovery plan with progress on treatment and tests • How much is Covid-19 to blame for growing NHS waiting times? The Nuffield Trust • Bringing hospital care home - Virtual Wards and Hospital at Home for older people.pdf (bgs.org.uk)
<p>ICS / ICB / ICP / PCN Commissioning</p>	<ul style="list-style-type: none"> • Integrated care (england.nhs.uk) • Where does the buck stop? Understanding accountabilities and structures in the national health and care system in England The King's Fund (kingsfund.org.uk)
<p>QOF / PHOF / DES / LES / NHS Contract / CQRS / CQUIN</p>	<ul style="list-style-type: none"> • NHS England » Network contract directed enhanced service indicators and SNOMED codes
<p>Leadership / Innovation</p>	<ul style="list-style-type: none"> • Leadership Academy • Welcome NHS Innovation Service
<p>Greener NHS</p>	<ul style="list-style-type: none"> • NHS England » NHS rolls out new electric vehicles to help patients and the planet • Climate change and health: time to act? - May need to sign in
<p>Personalised Care</p>	
<p>Personalised Care / Self Care / Social Prescribing / Health Coaching</p>	<ul style="list-style-type: none"> • Self Care forum • Personalised Care Institute • Personalised care • Social Prescribing Academy
<p>Group consultation</p>	
<p>Working Differently</p>	
<p>Shared Decision Making</p>	<ul style="list-style-type: none"> • Personalised Care Institute

Equality & Diversity	
Equality & Diversity	<ul style="list-style-type: none"> • Public Health Profiles
Inclusion Health	<ul style="list-style-type: none"> • Health Creation Academic Network • Inequality on the inside
Poverty / Homelessness	<ul style="list-style-type: none"> • Crisis • This is Poverty • How can the NHS help tackle the root causes of poverty? (kingsfundmail.org.uk) • FUEL POVERTY, COLD HOMES AND HEALTH INEQUALITIES IN THE UK
Population Health / Health Communities	<ul style="list-style-type: none"> • Making it personal – population health management and the NHS Emerald Insight • Population health framework (nhsproviders.org) • Population health management Deloitte UK
Thrive Into Work	<ul style="list-style-type: none"> • Thrive into Work • Thrive into Work Referral form
Health Inequalities	<ul style="list-style-type: none"> • NHS News
Trans / Non-binary Health / LGBTQ+	<ul style="list-style-type: none"> • LGBT Foundation • Surgery staff grab sheet (squarespace.com) • Trans inclusive organisations — TransActual • TransActual - Healthcare • CliniQ • LGBT Foundation - Healthcare Professionals • Supporting trans people: a quick guide for GPs — TransActual • Gires - eLearning • Clare Project - Resources • NHS England » Service specification: Gender Identity Services for Adults (Non-Surgical Interventions) • NHS England » Service specification: Gender Identity Services for Adults (Surgical Interventions) • Course: LGBT Health Hub (rcgp.org.uk) • Gender Variance • GMC - Trans Healthcare • Gender Dysphoria

<i>Continuation of Equality & Diversity</i>	
Migrant / Refugee Health	<ul style="list-style-type: none"> • THE REFUGEE & MIGRANT CENTRE • Supporting refugee and migrant health care in England The King's Fund (kingsfund.org.uk)
Traveller / Gypsy / Romany Health	<ul style="list-style-type: none"> • Gypsy Roma and Traveller History and Culture The Traveller Movement • Friends, Families and Travellers (gypsy-traveller.org)
Veterans Health	<ul style="list-style-type: none"> • The first call for help takes courage
<i>Management of Emergency Situations</i>	
Management of Emergency Situations	
111 / Emergency Care	
First Contact	<ul style="list-style-type: none"> • Supporting general practice – Common pitfalls • Paediatrics for Primary Care (and anyone else) (gppaedstips.blogspot.com)
Red Flags	
Sepsis	<ul style="list-style-type: none"> • Sepsis: recognition, diagnosis and early management • Sepsis guidance implementation advice for adults • Sepsis in Children • Sepsis Trust • quick SEPSIS RELATED ORGAN FAILURE ASSESSMENT
Therapeutic Monitoring	
OSCE	<ul style="list-style-type: none"> • Geeky Medics • Abdominal Examination - Demonstration - YouTube • Cardiovascular Examination - Demonstration - YouTube • Respiratory Examination - Demonstration - YouTube • Physical Diagnosis Skills - University of Washington School of Medicine • Practice Nursing - Assessment and examination of the respiratory system

Role Specific	
Cervical Cytology	<ul style="list-style-type: none"> • Guide to the interim assessment • British Association for Cytopathology • Lab Tests Online
Ear Care	<ul style="list-style-type: none"> • Ear Care Centre • RNID
Minor Surgery	
Obtaining Samples / Results	<ul style="list-style-type: none"> • Lab Tests Online
Wound Management	<ul style="list-style-type: none"> • Microworld • Tissue Viability Society • The BLS • Chronic oedema: assessment, compression and monitoring (independentnurse.co.uk) • Medical Adhesive-Related Skin Injuries (MARSI): with a Primary Care Focus - Sponsored by Clinimed (independentnurse.co.uk) • JWC Masterclass registration open (mahealthcarevents.co.uk) • read (jcn.co.uk) – leg ulcers • Log in to the JCN website - Journal of Community Nursing – lower limb skin tears • Essentials of wound care: assessing and managing impaired skin integrity (rcni.com)
Health Promotion / Health Screening	
Health Promotion / Population Health	<ul style="list-style-type: none"> • Better Health
Health Screening	<ul style="list-style-type: none"> • PHE Screening
PHE / OHID / UKHSA	<ul style="list-style-type: none"> • Knowledge & Library Services • Campaign Resources • Public Health Profiles • Health Publications • Health Profile for England 2021 • English indices of deprivation 2019 • UK Health Security Agency Conference 2022 (ukhsa-events.org.uk)

Continuation of Health Promotion / Health Screening

<p>NHS Health Check</p>	<ul style="list-style-type: none"> • NHS Health Check • NHS Health Check quarterly statistics: April to June 2022 offers and uptake (www.gov.uk)
<p>NOIDS / PHE Surveillance / Syndromic Surveillance</p>	<ul style="list-style-type: none"> • Notifications of infectious diseases (NOIDs) - GOV.UK (www.gov.uk) • Ambulance Quality Indicators Systems Indicators for August 2022 (www.gov.uk) • GP out-of-hours syndromic surveillance: weekly bulletins for 2022 (www.gov.uk) • Emergency department: weekly bulletins for 2022 (www.gov.uk) • Syndromic surveillance: weekly summaries for 2022 - GOV.UK (www.gov.uk) • GP in hours: weekly bulletins for 2022 (www.gov.uk) • Remote health advice: weekly bulletins for 2022 (www.gov.uk) • A&E attendances and emergency admissions for August 2022 (www.gov.uk) • Provisional Monthly Hospital Episode Statistics for Admitted Patient Care, Outpatient and Accident and Emergency data, April 2022 - July 2022 - GOV.UK (www.gov.uk) • Integrated Urgent Care Aggregate Data Collection (IUC ADC) – for August 2022 (Provisional statistics) (www.gov.uk) • Provisional Accident and Emergency Quality Indicators for England, July 2022, by provider - GOV.UK (www.gov.uk) • Investigation of SARS-CoV-2 variants: technical briefings (www.gov.uk) • Diagnostic waiting times and activity for July 2022 (www.gov.uk) • Ambulance Quality Indicators Clinical Outcomes for April 2022 - GOV.UK (www.gov.uk) • Referrals for first consultant-led outpatient appointments for July 2022 - GOV.UK (www.gov.uk) • Avian: GB disease surveillance and emerging threats reports - GOV.UK (www.gov.uk) • Avian influenza in wild birds - GOV.UK (www.gov.uk)
<p>UK GOV Deaths / Suicide / Palliative Care</p>	<ul style="list-style-type: none"> • Deaths registered weekly in England and Wales, provisional: week ending 26 August 2022 - GOV.UK (www.gov.uk) • Weekly all-cause mortality surveillance: 2022 to 2023 (www.gov.uk) • Summary Hospital-level Mortality Indicator (SHMI), Deaths associated with hospitalisation, England, May 2021 - April 2022 - GOV.UK (www.gov.uk) • Unexplained deaths in infancy, England and Wales: 2020 - GOV.UK (www.gov.uk) • Quarterly suicide death registrations in England: 2001 to 2021 registrations and Quarter 1 (Jan to Mar) to Quarter 2 (Apr to June) 2022 provisional data - GOV.UK (www.gov.uk) • Palliative and end of life care profiles: September 2022 data update (www.gov.uk) • Characteristics associated with the risk of deaths involving coronavirus (COVID-19) among people receiving a booster vaccination, England: January to March 2022 - GOV.UK (www.gov.uk)

Continuation of Health Promotion / Health Screening

<p>UK GOV Infectious Disease Monitoring</p>	<ul style="list-style-type: none"> • C. difficile infection: monthly data by prior trust exposure (www.gov.uk) • Klebsiella species bacteraemia: monthly data by location of onset (www.gov.uk) • E. coli bacteraemia: monthly data by location of onset - GOV.UK (www.gov.uk) • MSSA bacteraemia: monthly data by location of onset (www.gov.uk) • MRSA bacteraemia: monthly data by location of onset (www.gov.uk) • P. aeruginosa bacteraemia: monthly data by location of onset - GOV.UK (www.gov.uk) • Avian influenza (bird flu) in Europe, Russia and the UK (www.gov.uk) • Notifiable diseases: weekly reports for 2022 (www.gov.uk) • Notifiable diseases: causative agents reports for 2022 (www.gov.uk) • National norovirus and rotavirus surveillance reports: 2022 to 2023 season (www.gov.uk) • Notifiable diseases: last 52 weeks (www.gov.uk) • National ambulance syndromic surveillance: weekly bulletins 2022 (www.gov.uk) • National flu and COVID-19 surveillance reports: 2022 to 2023 season (www.gov.uk)
<p>Addiction/Smoking</p>	<ul style="list-style-type: none"> • Drink Coach • Stop smoking interventions and services • Smoking, Drinking and Drug Use among Young People in England, 2021 (www.gov.uk) • Statistics on NHS Stop Smoking Services in England, April 2021 to December 2021 - GOV.UK (www.gov.uk) • The last generation of smokers (independentnurse.co.uk) • Decrease in smoking and drug use among school children but increase in vaping, new report shows - NHS Digital

Immunisation / Travel Health

- [Joint Committee on Vaccination and Immunisation](#)
- [Immunisation against infectious disease](#)
- [West Midlands Immunisation Service](#)
- [Vaccination of individuals with uncertain or incomplete immunisation status](#)
- [Immunisation Queries: Immunisation information for Health Care Services within the West Midlands area](#)
- [Immunisation](#)
- [v The complete routine immunisation schedule from February 2022 \(publishing.service.gov.uk\)](#)
- [Home - Health Publications vaccinations](#)
- [Immunisation training standards for healthcare practitioners - GOV.UK \(www.gov.uk\)](#)
- [Vaccines and porcine gelatine - GOV.UK \(www.gov.uk\)](#)
- [Influenza vaccine and porcine gelatine: guidance for health professionals - GOV.UK \(www.gov.uk\)](#)
- [Shingles vaccination: guidance for healthcare professionals - GOV.UK \(www.gov.uk\)](#)
- [Shingles immunisation programme: introduction of Shingrix® letter - GOV.UK \(www.gov.uk\)](#)
- [Shingles - Herpes Zoster the Green Book Chapter 28A](#)
- [Shingles vaccination: guidance for healthcare professionals - GOV.UK \(www.gov.uk\)](#)
- [Shingles Vaccination Eligibility Poster](#)

Flu

- [Flu and flu vaccinations](#)
- [The national influenza immunisation programme 2021 to 2022](#)
- [Flu vaccines for the 2021 to 2022 season poster](#)
- [Appendix C: Flu vaccinator competency assessment tool](#)
- [Healthcare assistants and flu vaccinations](#)
- [vHealth and Social Care Workers Winter | Campaign Resource Centre \(phe.gov.uk\)](#)
- [Over 50s to be offered COVID-19 booster and flu jab this autumn \(practicenursing.com\)](#)
- [Influenza vaccines for the 2022 to 2023 season \(publishing.service.gov.uk\)](#)
- [Health Care Support Workers Administering ... \(bing.com\)](#)
- [National minimum standards and core curriculum for immunisation training for registered healthcare practitioners](#)
- [Immunisation training of healthcare support workers: national minimum standards and core curriculum - GOV.UK \(www.gov.uk\)](#)
- [Health Care Support Workers Administering Inactivated Influenza, Shingles and Pneumococcal Vaccines for Adults and Live Attenuated Influenza Vaccine \(LAIV\) for Children](#)
- [The Role of Nursing Associates in Vaccination and Immunisation](#)
- [Immunisation Knowledge and Skills Competence Assessment Tool](#)
- [Annual flu programme - GOV.UK \(www.gov.uk\)](#)
- [Influenza: the green book, chapter 19](#)
- [National protocol for inactivated influenza vaccine](#)

Continuation of Immunisation / Travel Health

<p>Flu</p>	<ul style="list-style-type: none"> • Flu vaccination programme 2022 to 2023: information for healthcare practitioners - GOV.UK (www.gov.uk) • Written Instruction for the administration of seasonal 'flu vaccination – SPS - Specialist Pharmacy Service – The first stop for professional medicines advice • Seasonal influenza service specifications and collaboration agreement • NHS England » Reimbursable vaccines and eligible cohorts for the 2022/23 NHS Seasonal Influenza (flu) Vaccination Programme • NHS England » COVID-19 autumn booster and flu vaccine programme expansion • Statement of amendments to annual flu letter – 21 July 2022 • Fluenz Tetra (with Subtitles) • Flu vaccines for children and young people for 2022 to 2023 • Flu vaccines: 2022 to 2023 flu season - GOV.UK (www.gov.uk) • UK immunisation schedule: the green book, chapter 11 • Influenza vaccines marketed in the UK - GOV.UK (www.gov.uk) • Vaccines and porcine gelatine - GOV.UK (www.gov.uk) • Seasonal influenza vaccine uptake in GP patients: winter season 2021 to 2022 • Leanne's story about Flu • Flu can be fatal - Youtube • Influenza: the green book, chapter 19 - GOV.UK (www.gov.uk) • NHS England » Reasonable adjustments
<p>Covid Vaccine</p>	<ul style="list-style-type: none"> • Greenbook COVID-19 chapter 14a • COVID-19 Vaccine Moderna e-learning now available • GP COVID-19 vaccine dashboard • Updates made to the COVID-19 vaccination learning programme • NHS England » Over 65s can now book autumn COVID booster • COVID-19 vaccines for autumn 2022: JCVI advice, 15 August 2022 (updated 3 September 2022) - GOV.UK (www.gov.uk) • Covid 19 Vaccination Programme • Covid 19 Vaccines • Coronavirus » Primary care guidance (england.nhs.uk) • Future NHS • Coronavirus (COVID-19) vaccine - NHS (www.nhs.uk) • COVID-19 vaccination: information for healthcare practitioners - GOV.UK (www.gov.uk) • Covid 19 The Green Book Chapter 14A • JCVI Updated statement on the Covid 19 vaccination programme for autumn 2022 • NHS England » COVID-19 autumn booster and flu vaccine programme expansion • JCVI Advises use of additional bivalent vaccine for autumn booster campaign • Autumn Covid 19 booster and flu vaccine programme • National protocol for Spikevax® bivalent Original/Omicron COVID-19 vaccine - GOV.UK (www.gov.uk)

Covid Vaccine	<ul style="list-style-type: none"> • Immunisation patient group direction (PGD) templates - GOV.UK (www.gov.uk) • Covid 19 Vaccination autumn booster resources • COVID-19 vaccination: vaccine product information - GOV.UK (www.gov.uk) • Covid 19 vaccinator competency assessment tool • NHS England » Millions now able to book their autumn booster
Children	<ul style="list-style-type: none"> • Students told to get up to date with vaccinations ahead of Freshers' Week - GOV.UK (www.gov.uk) • Child-friendly vaccination clinics launched in Cornwall thanks to collaboration within the Cornwall and Isles of Scilly system (icb.nhs.uk)
Adults	<ul style="list-style-type: none"> • Immunisation patient group direction (PGD) templates • Shingles immunisation programme: introduction of Shingrix® letter
Vaccine Update	<ul style="list-style-type: none"> • Vaccine update: issue 331, August 2022 - GOV.UK (www.gov.uk) • Vaccine update: issue 329, May 2022 - GOV.UK (www.gov.uk) • Vaccine update: issue 328, May 2022, Shingrix® special edition - GOV.UK (www.gov.uk) • Vaccine update: issue 327, May 2022, SCID, TB and BCG special edition (www.gov.uk) • Vaccine update: issue 326, April 2022, HPV special edition - GOV.UK (www.gov.uk) • Vaccine update: issue 325, April 2022, flu special edition - GOV.UK (www.gov.uk)
PGD	<ul style="list-style-type: none"> • Hib/MenC: patient group direction (PGD) template - GOV.UK (www.gov.uk)
Travel Health	<ul style="list-style-type: none"> • Travel Health Pro • Fit for Travel • Travel Health • Jane Chiodini • Corona.Help • Visiting friends and relatives abroad: health advice • Travelling abroad to visit friends and relatives: Advice for travellers • Mosquito bite avoidance: advice for travellers • Mosquito health advice for travellers - English version - Health Publications • Malaria vaccine has world-changing potential to save lives (independentnurse.co.uk)

Mental Health / Learning Disability / Disability	
Mental Health	<ul style="list-style-type: none"> • Mental Health • Mental Health UK • Mind • Place2b • Rethink Mental Illness • Young Minds • Every Mind Matters • Calm • Headspace • Better Health - Every Mind Matters - Resources • ZSA Training • NHS > Mental Health • Autism Statistics, July 2021 to June 2022 - GOV.UK (www.gov.uk) • Mental Health Services Monthly Statistics, Performance June, Provisional July 2022 (www.gov.uk) • Dudley - Suicide prevention - make a difference (govdelivery.com)
Learning Disability	<ul style="list-style-type: none"> • Learning Disabilities • Learning Disability England • Mencap • Bild • Autism • NHS England » Reasonable adjustments
Disability (Inc. hearing and visual)	<ul style="list-style-type: none"> • Disability Rights UK • Disability Matters • RNID - National hearing loss charity • NHS England » Reasonable adjustments

From Cradle to...

<p>Infant Health</p>	<ul style="list-style-type: none"> • Tommys • First Steps Nutrition Trust • Bliss • ICON Toolkit
<p>Child Health</p>	<ul style="list-style-type: none"> • Unicef • Health Professional Academy • Premature Babies • Child and Maternal Health • Women and Child First • Child Health Information Services • Place2b • Childhood eczema • Childhood asthma • Paediatrics for Primary Care (and anyone else) (gppaedstips.blogspot.com) • Early childhood weight affected by mother's diet during pregnancy (cogora.com) • Preventing back-to-school asthma attacks (mah-communications.co.uk) • Programme 2022 Infant Allergy Conference • Paediatric focus from GPn (contains promotional information from SMA Nutrition: Infant crying? Help for parents) (mailchi.mp) • #AskAboutAsthma (createsend1.com) • communications toolkit for Primary Care colleagues (createsend1.com) • find more details and sign up to attend (createsend1.com) • Dismissed-for-too-long-The-impact-of-migraine-on-children-and-young-people-September-2022.pdf (migrainetrust.org) • Child-friendly vaccination clinics launched in Cornwall thanks to collaboration within the Cornwall and Isles of Scilly system (icb.nhs.uk)

Adolescent Health	<ul style="list-style-type: none">• Adolescent Health Programme• Society for Adolescent Health and Medicine• Young Minds• Decrease in smoking and drug use among school children but increase in vaping, new report shows - NHS Digital
Mens Health	<ul style="list-style-type: none">• Mens Health Forum• Mens Health Month• Mens health.org• Mens Health UK• Men and mental health• Men's Mental Health Awareness• Prostate Cancer UK• Orchid Fighting Male Cancer• Prostate Cancer UK Facebook Page• Movember
The Older Population	<ul style="list-style-type: none">• BGS• Ageing Better• Delirium Champions - YouTube• The geriatric medicine workforce 2022 British Geriatrics Society (bgs.org.uk)

<p>Women's Health</p>	<ul style="list-style-type: none"> • Womens Health Concern • Well Being of Women • Coppa Feel • Menopause Matters • The Menopause Charity • Royal College of Obstetricians and Gynaecologists - Guidelines • Pelvic Partnership • CRUK - Womens Cancer • Breast Cancer Now • Foundation for Women's Cancer • Eve Appeal • Ovarian.Org • Jo's Trust • Well Spring • Know your Lemons • British Menopause Society - <u>www.thebms.org.uk</u> • NHS - www.nhs.uk/conditions/menopause • Henpicked - henpicked.net • The Menopause Exchange - www.menopause-exchange.co.uk • Women's Health Concerns - www.womens-health-concern.org • Menopause Matters - www.menopausematters.co.uk • The Daisy Network - www.daisynetwork.org • Dr Louise Newson's Menopause Doctor - www.menopausedoctor.co.uk • Manage My Menopause - www.managemymenopause.co.uk/menopause-advice • Menopause Support - menopausesupport.co.uk • The benefits and risks of HRT and how to communicate this to women (independentnurse.co.uk) • HRT Taskforce presents recommendations to support future supply - GOV.UK (www.gov.uk)
<p>Carers / Social Care / Care Homes</p>	<ul style="list-style-type: none"> • The Care Provider Alliance • Skills for Care • The Care Workers' Charity • Building capacity and capability for improvement in adult social care The King's Fund (kingsfund.org.uk) • Adult social care workforce in England - House of Commons Library (parliament.uk)
<p>Young Carers</p>	
<p>Complex Needs</p>	

Family Planning & Sexual Health	
Family Planning	<ul style="list-style-type: none"> • Faculty of Sexual and Reproductive Healthcare Education and Training
Reproductive	<ul style="list-style-type: none"> • Tommys • Folic acid added to flour to prevent brain and spinal conditions in foetuses - GOV.UK (www.gov.uk)
Sexual Health / Sexual Abuse	<ul style="list-style-type: none"> • Sexual and Reproductive Health Profiles • FSRH Education & Training • Female sexual dysfunction: what the practice nurse needs to know (practicenursing.com) - may need sign in
Maternity / Neonate health	<ul style="list-style-type: none"> • Vulnerable consumers advised of ongoing risk of Listeria associated with ready to eat smoked fish Food Standards Agency
Care of Patients with Long Term Conditions	
LTC	<ul style="list-style-type: none"> • Physical Activity for the Prevention and Management of Long-Term Conditions • medtech innovation briefing (nice.org.uk)
Diabetes & Pre-Diabetes	<ul style="list-style-type: none"> • Mumoactive • The mySugr App • PCDS Entry level module series - Foot Check • Type 2 diabetes in adults: management • Sponsored: NG17 – Type 1 diabetes in adults: diagnosis and management (update) (cogora.com) • Screen people with type 2 diabetes regularly for depression, say researchers (cogora.com)
Respiratory	<ul style="list-style-type: none"> • Spirometry: step by step • ARTP • British Lung Foundation • The Primary Care Respiratory Society • Respiratory – RespiMat® patient resources Boehringer Ingelheim (boehringer-ingelheim.com) • Respiratory News & Advice (nursinginpractice.com) • Dudley pulmonary rehab - Template PI (dgft.nhs.uk) • COPD experts discuss the challenges we are facing (astrazeneca.com) • GPnotebook focus on respiratory medicine (contains promotional information) (mailchi.mp)
COPD	<ul style="list-style-type: none"> • Right Breathe • GOLD COPD 2022 strategy Independent professional body guideline Guidelines

Continuation of Long Term Conditions

Asthma	<ul style="list-style-type: none"> • Asthma UK • Asthma: diagnosis, monitoring and chronic asthma management • Global Initiative for Asthma • British guideline on the diagnosis and pharmacological management of asthma in children • MHRA warning over home use of asthma nebulisers in children (mims.co.uk)- may need a sign in • Sponsored module: Asthma emergencies: simple steps save lives (cogora.com) • Preventing back-to-school asthma attacks (mah-communications.co.uk) • Asthma reviews: an essential part of good care (practicenursing.com)- may need sign in • Programme 2022 Infant Allergy Conference • Advising patients on physical activity and asthma (independentnurse.co.uk) • #AskAboutAsthma (createsend1.com) • communications toolkit for Primary Care colleagues (createsend1.com) • find more details and sign up to attend (createsend1.com)
Hypertension	<ul style="list-style-type: none"> • British Heart Foundation • Blood Pressure UK • Hypertension in adults: diagnosis and management • Hypertension in adults: diagnosis and treatment • Hypertension: symptoms to look out for and treatment options (rcni.com)
CVD/AF	<ul style="list-style-type: none"> • QRISK®3-2018 risk calculator • Heart Rhythm Alliance • CVD risk assessment and management • NHS lipid management pathway NHS guideline Guidelines • NICE publishes first draft guidance from its Early Value Assessment pilot project recommending smartphone-linked ECG device News and features News NICE • Muscle pain in patients on statins 'rarely caused by the statin' MIMS online- may need sign in • Statins do not regularly cause muscle pain, large study finds (cogora.com) • GPnotebook focus on cardiovascular medicine (mailchi.mp) may need a log in
Heart Failure	<ul style="list-style-type: none"> • British Heart Foundation • British Society Guidelines

Continuation of Long Term Conditions

Cancer / Oncology	<ul style="list-style-type: none"> • Surviving Thyroid Cancer • Help Us Help You - Lung Cancer Symptoms • Breast Cancer Now • Macmillian • Bowel Cancer UK • Brain Trust • CRUK • Action Cancer • Foundation for Women's Cancer • NHS England » Cancer • Bowel cancer screening extended to patients aged 58 - Nursing in Practice • Nursing in Practice • Practice (cogora.com) • Nearly half of cancer deaths linked to 'preventable' risk factors, research finds - Nursing in Practice • Waiting times for suspected and diagnosed cancer patients for July 2022 (www.gov.uk)
Chronic Kidney Disease	<ul style="list-style-type: none"> • Kidney.Org • Kidney Quality Improvement Partnership
Liver Disease	<ul style="list-style-type: none"> • British Liver Trust • Liver Research • BRITISH ASSOCIATION FOR THE STUDY OF THE LIVER • LIVERNORTH • LIVER DISEASE AND CIRRHOSIS
Blood Disorders	<ul style="list-style-type: none"> • Blood Cancer UK • UK Thalassaemia Society • The ITP Support Association • UK-ITP Paediatric ITP Registry • The Haemophilia Society • UK MDS Forum • Pernicious Anaemia Society • Haemochromatosis UK
G.I	<ul style="list-style-type: none"> • GIST Cancer UK • Pernicious Anaemia Society
ENT	

Continuation of Long Term Conditions

G.U	
ME / CFS / Fibromyalgia	<ul style="list-style-type: none"> • ME Association • ME Research • Action for M.E • Fibromyalgia Action UK • Fibromyalgia UK • Home - Fibromyalgia Awareness UK (fibroawarenessuk.org) • Fibromyalgia - Symptoms, diagnosis and treatment BMJ Best Practice • Fibromyalgia - The Brain Charity
Neurological Conditions	<ul style="list-style-type: none"> • The Brain Tumour Charity • Narcolepsy.Org • ACNR • MS Society UK Information, research and support Multiple Sclerosis Society UK • Home MS Trust • Epilepsy Society • Dismissed for too long - The impact of migraine on children and young people September 2022
Musculoskeletal Conditions	<ul style="list-style-type: none"> • Rheumatology • National Axial Spondyloarthritis Society • Musculoskeletal health • Musculoskeletal health: 5 year prevention strategic framework • Faculty of Occupational Medicine • Guide to embedding your first contact physiotherapy service





Continuation of Long Term Conditions

<p>Endocrine Disorders / Metabolic Disorders</p>	<ul style="list-style-type: none"> • Society for Endocrinology • Turner Syndrome Support Society • Thyroid Eye Disease • British Thyroid Foundation • Thyroid UK • The Pituitary Foundation • Addisons Disease • Parathyroid UK • The Royal Osteoporosis Society • Metabolic Support UK
<p>Frailty</p>	<ul style="list-style-type: none"> • Recognising frailty • Identifying frailty • CLINICAL FRAILTY SCALE • Practice Nursing - Dysphagia in the older person: an update • Practice Nursing - Preventing skin tears among older adults in general practice • Assessment of frailty in Alzheimer's: a literature review
<p>Dementia / Alzheimers</p>	<ul style="list-style-type: none"> • Dementia UK • Age UK - Understanding Dementia • Delirium Champions • Alzheimers Society • Dementia profile updates - GOV.UK (www.gov.uk)

Continuation of Long Term Conditions

Dermatology

- [British Association of Dermatologists](#)
- [Eczema](#)
- [The British Skin Foundation](#)
- [Acne vulgaris: management](#)
- [The Primary Care Dermatology Society](#)
- [Acne.org](#)
- [Allergy UK](#)
- [Urticaria](#)
- [Hives](#)
- [Sunburn](#)
- [Causes of cancer and reducing your risk](#)
- [What is Rosacea?](#)
- [Rosecea](#)
- [The Rosacea Forum](#)
- [Herpes Viruses Association](#)
- [Shingles](#)
- [Fungal Skin Infection - Foot](#)
- [The Psoriasis Association](#)
- [National Psoriasis Foundation](#)
- [Melanoma](#)
- [Skin Health Information](#)
- [British Association of Plastic Reconstructive and Aesthetic Surgeons - Procedure Guides](#)
- [Warts and verrucae](#)
- [Nearly half of cancer deaths linked to 'preventable' risk factors, research finds - Nursing in PracticeNursing in Practice \(cogora.com\)](#)
- [Psoriasis diagnoses in primary care delayed by up to five years, study shows \(cogora.com\)](#)
- [How to reduce the risk of skin cancer by NICE Talks \(soundcloud.com\)](#)
- [Understanding hidradenitis suppurativa](#)

<i>Continuation of Long Term Conditions</i>	
Allergy / Auto-immune / Genetic Conditions	<ul style="list-style-type: none"> • Allergy UK • British Society for Rheumatology • Addisons Disease
Obesity	<ul style="list-style-type: none"> • Obesity UK • Early childhood weight affected by mother's diet during pregnancy (cogora.com)
Pain Management	<ul style="list-style-type: none"> • Pain Concern
Genomics	
Multi-Morbidity	<ul style="list-style-type: none"> • Multimorbidity • Multimorbidity / multiple long-term conditions (MLTC)
Minor Illness / First Contact Assessment / OSCE	<ul style="list-style-type: none"> • Fact Sheets - Self Care Forum • OSCE Checklists  (mlsend.com) • OSCE Flashcards  (mlsend.com) • 600+ OSCE Stations  (mlsend.com) • Anatomy Flashcards  (mlsend.com) • Diagnostic and treatment dilemmas in well children with petechial rash in the emergency department (rcni.com)- may need sign in
Other / Case Studies	<ul style="list-style-type: none"> • NICE approves novel treatment for C. difficile infection (mims.co.uk) - may need sign in • Patients with recurrent C difficile should be offered faecal bacteria transplant (cogora.com)
End of Life Care	
End of Life Care	<ul style="list-style-type: none"> • ReSPECT for healthcare professionals • Hospice UK • DNACPR Discussion - OSCE Guide Resuscitation (CPR) Counselling - YouTube

Covid-19 / Monkeypox

Covid-19	<ul style="list-style-type: none"> • Covid Live • Updates will be weekly after Friday 1st July 2022 Coronavirus in the UK (data.gov.uk) • The COVID-19 Dashboard Moves to Weekly Updates - UK Health Security Agency (blog.gov.uk) • The R value and growth rate - GOV.UK (www.gov.uk) • COVID-19 variants: genomically confirmed case numbers - GOV.UK (www.gov.uk) • updated our delivery of systemic anticancer treatments guideline (nice.org.uk) • Coronavirus and vaccination rates in people aged 18 years and over by socio-demographic characteristic and region, England: 9 September 2022 (www.gov.uk) • Coronavirus (COVID-19) Infection Survey, UK: 9 September 2022 (www.gov.uk)
Long Covid	<ul style="list-style-type: none"> • Supporting your recovery after COVID-19 • Long Covid Toolkit • Long term effects of COVID (Long COVID) • Post-COVID Syndrome (Long COVID) • COVID-19 Yorkshire Rehabilitation Screening Tool • FOM Guidance
Monkeypox	<ul style="list-style-type: none"> • Monkeypox: guidance - GOV.UK (www.gov.uk) • Intradermal Monkeypox guide for eligible patients - Health Publications • Monkeypox outbreak: epidemiological overview, 30 August 2022 - GOV.UK (www.gov.uk) • Monkeypox outbreak: epidemiological overview - GOV.UK (www.gov.uk)

News & Views

<p>Digital News / Remote Consultations</p>	<ul style="list-style-type: none"> • Digital Health News Webinars • Digital Health News • NHS Digital • DigiHealthWell • Public Sector Events, Conferences and Training - Inside Government • Digital Transformation • NICE publishes first draft guidance from its Early Value Assessment pilot project recommending smartphone-linked ECG device News and features News NICE • Updated evidence standards framework (ESF) published (nice.org.uk) • medtech innovation briefing (nice.org.uk) • Digital Health Networks Newsletter: 12 September 2022 (mailchi.mp) • Evidence standards framework (ESF) for digital health technologies Our programmes What we do About NICE
<p>PSNC News / Pharmacy</p>	<ul style="list-style-type: none"> • National Pharmacy Association • Royal Pharmaceutical Society • Medicines Learning Portal • Specialist Pharmacy Service • August 2022 Price Concessions 5th Update (mailchi.mp) • PSNC Newsletter: 31st August (mailchi.mp) • PSNC Newsletter: 12th September (mailchi.mp)
<p>Pulse / GP Online / HSJ / NB Medical</p>	<ul style="list-style-type: none"> • GP Online • HSJ • Pulse Today
<p>Primary Care Update / PCC / PPP</p>	<ul style="list-style-type: none"> • Public Policy Projects News • Primary Care Bulletin

Continuation of News & Views

Health Care Leaders Newsletters	
Kings Fund	<ul style="list-style-type: none"> • The Kings Fund • How can the NHS help tackle the root causes of poverty? (kingsfundmail.org.uk)
World Health Organisation	<ul style="list-style-type: none"> • WHO • OpenWHO
IHCT / CCG / STP / Healthier Futures	<ul style="list-style-type: none"> • Black Country & West Birmingham CCG • Dudley Integrated Health and Care • Home :: Black Country Healthcare NHS Foundation Trust • Staff News • Issue 10 - Black Country Primary Care Brief (sharepoint.com) • Issue 09 - Black Country primary Care Brief (sharepoint.com)
NHSI / NHSE	
University / Student Nurses	
Medisa / Univadis / Geeky Medics / GP Notebook / Medscape	<ul style="list-style-type: none"> • Medisa • Geeky Medics • Medscape Nurses • GP Notebook • GPnotebook focus on cardiovascular medicine (mailchi.mp) • Latest videos on GPnotebook TV (mailchi.mp) • Paediatric focus from GPn (contains promotional information from SMA Nutrition: Infant crying? Help for parents) (mailchi.mp) • 📖 BOOK NOW: Study Group sessions on Dermatology, Sexual health and more! (mailchi.mp) - GP notebook
Nurse Guidelines	
The Health Foundation	<ul style="list-style-type: none"> • The Health Foundation • Podcast: Should more clinicians manage the NHS? (healthfdn.org.uk)
The Health Care Leaders Update	<ul style="list-style-type: none"> • Health Care Leader News

Continuation of News & Views

Practice Index	
Innovation Agency	<ul style="list-style-type: none"> • Innovation Agency Exchange
RCN	<ul style="list-style-type: none"> • RCN
Nursing in Practice / Nursing Standard / Independent Nurse	<ul style="list-style-type: none"> • Nursing Times • Practice Nursing - Explore our brand new website • Journal of General Practice Nursing • Community Bulletin • GPN Bulletin
QNI	<ul style="list-style-type: none"> • QNI • Talk To Us © – The Queen's Nursing Institute (qni.org.uk)
NMC	<ul style="list-style-type: none"> • NMC • Latest updates and an inspirational story (news-nmc.org.uk)
CMO / CNO	
Nice	<ul style="list-style-type: none"> • NICE • NICE News for Health and Social Care August 2022 (mailchi.mp) • The NICE field team Into practice What we do About NICE
RCGP / BMA / The Lancet	<ul style="list-style-type: none"> • The Lancet • British Medical Journal • Royal College of General Practitioners
Midlands Academic Health Science Network	<ul style="list-style-type: none"> • WMAHSN Network
Healthwatch	<ul style="list-style-type: none"> • Healthwatch
Other	<ul style="list-style-type: none"> • Patients Association

Free Training / Webinars / Meetings / CPD

Development / Information and Knowledge

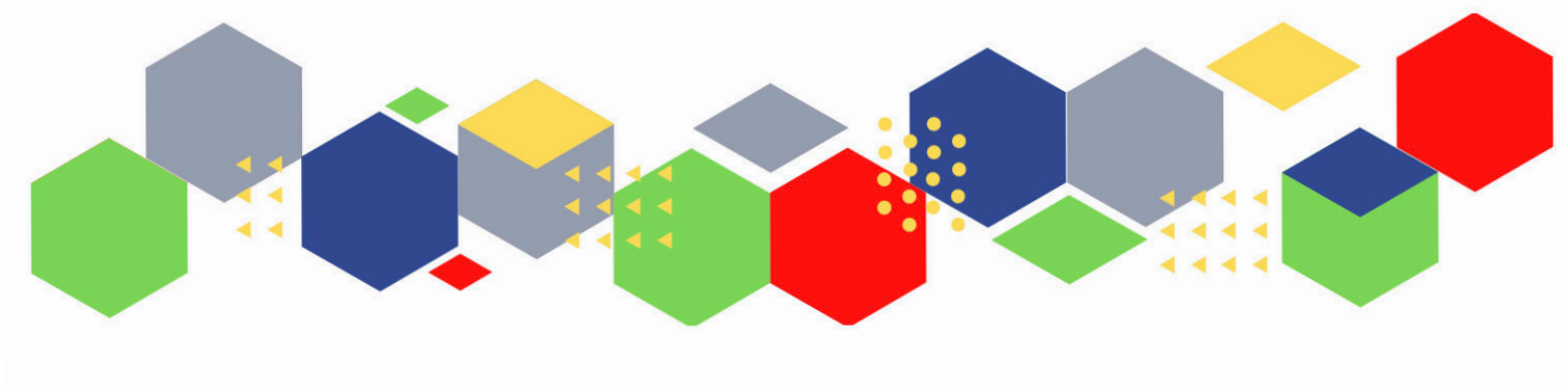
- [Red Whale Training](#)
- [Issues & Answers](#)
- [Issues & Answers - Long Covid Broadcasts](#)
- [UK Health Security Agency Conference 2022 \(ukhsa-events.org.uk\)](#)
- [Programme 2022 | Infant Allergy Conference](#)
- [COPD experts discuss the challenges we are facing \(astrazeneca.com\)](#)
- 📌 [BOOK NOW: Study Group sessions on Dermatology, Sexual health and more! \(mailchi.mp\)](#) – GP note book
- [NVESEPT22 - Respiratory - NIP 365 \(nursinginpractice365.uk\)](#)
- **21 September, 2pm - 4pm.** [CVDPREVENT: Using data to drive system change](#)
- **22 September, 2pm, – 3.15pm.** [Discharge Medicines Service - Strategic Look Ahead](#)
- **27 September, 11am – 12.30pm.** [FeNO learning collaborative meeting](#)
- **28 September, 11am – 12.30pm.** [Super Skills: It's a Kinda Magic - creatively engaging and connecting with people](#)
- **28 September, 1pm – 2.30pm.** [Commissioning of social prescribing and community support](#)
- **4 October, 9.30am – 4.10pm.** [Every breath you treat - understanding the impact of air pollution across the life course](#)
- **5 October, 1pm – 2pm.** [Using GIRFT's best practice pathway and guidance to improve care for children with abdominal pain](#)
- **12 October, 9am – 5.15pm.** [NHS Genomics healthcare summit](#)
- [JWC Masterclass registration open \(mahealthcareevents.co.uk\)](#)

Continuation of Free Training / Webinars / Meetings / CPD

Free to RCN	<ul style="list-style-type: none"> • RCNi events RCNi
MIMMs Learning	
Future Proof Health Training	<ul style="list-style-type: none"> • News & Events
BCWB Training Hub	<ul style="list-style-type: none"> • Latest news from the Black Country and West Birmingham Training Hub (campaign-archive.com)
Evidence based care	
Area Bulletins	
Blogs/Vlogs	<ul style="list-style-type: none"> • Read the blog (kingsfundmail.org.uk) • Racism in the NHS is rampant: nurses demand action (independentnurse.co.uk) • Archie Battersbee and the limits of law (independentnurse.co.uk) • The last generation of smokers (independentnurse.co.uk) • The impact of the About Me standard on the health and care system – PRSB (theprsb.org) • Staying safe in extreme heat - UK Health Security Agency (blog.gov.uk) • Working towards a healthy Commonwealth Games - UK Health Security Agency (blog.gov.uk) • COVID-19: the future of UKHSA surveillance - UK Health Security Agency (blog.gov.uk) • The COVID-19 Dashboard Moves to Weekly Updates - UK Security Agency (blog.gov.uk) • Staying Safe During Summer - UK Health Security Agency (blog.gov.uk) • The SIREN study: Two years on - UK Health Security Agency (blog.gov.uk) • Clean Air Day – how UKHSA is tackling air pollution, and how you can help - UK Health Security Agency (blog.gov.uk) • Information on monkeypox and our investigation into recent cases - UK Health Security Agency (blog.gov.uk) • A voice to lead: International Nurses Day 2022 - UK Health Security Agency (blog.gov.uk) • An increase in Hepatitis Cases in Children - UK Health Security Agency (blog.gov.uk) • UKHSA'S weekly surveillance report: focusing on 'Pillar 1' data - UK Health Security Agency (blog.gov.uk) • What is Lyme disease, and why do we need to be tick aware? - UK Health Security Agency (blog.gov.uk) • What to do if you have symptoms of a respiratory infection including COVID-19, or a positive COVID-19 test - UK Health Security Agency (blog.gov.uk) • NHS England » Managing Heart Failure @home: An opportunity for excellence

Continuation of Free Training / Webinars / Meetings / CPD

Eventbrite	
e-Learning for Health	
YouTube	<ul style="list-style-type: none"> • NHS England • Black Country Healthcare - YouTube
Podcasts	<ul style="list-style-type: none"> • The Nursing Handover Podcast • Nursing Standard Podcasts • Nursing Matters • Welcome to the BJN Podcast • Cygnet Health Care Podcast • EBN podcast • This Is Nursing • Teach me, I'm a Nurse • Past Caring • RCGP eLearning podcast • The BMJ Podcast • Primary Care Network podcasts • The Professional Support Unit's Pandemic Podcast • The Next GenCast • How to reduce the risk of skin cancer by NICE Talks (soundcloud.com)
Research	<ul style="list-style-type: none"> • Science Daily • Multimorbidity / multiple long-term conditions (MLTC) • National Institute for Health and Care Research
Freebies	<ul style="list-style-type: none"> • Blue Light Card
Other	



Thank you for reading Future Proof Health's weekly news!

If you missed past issues, please click [here](#) to view them

More information can be found on our website, [here](#)

Don't forget to like us on [Facebook](#) & Follow us on [Twitter](#)

