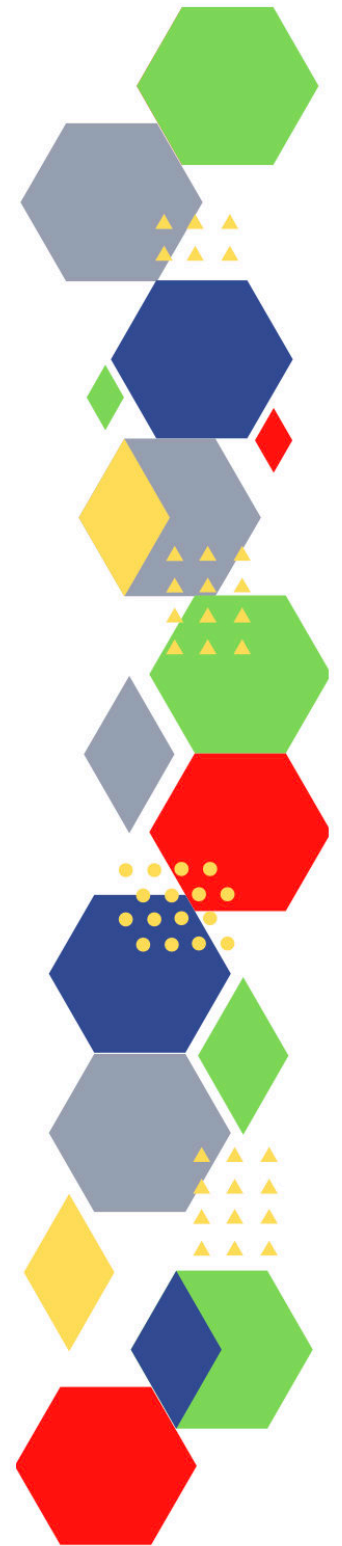




Future Proof Health Presents

Weekly News

10th June 2022



Communication	
Communication with Patients	
Communication within Teams	
Consent	<ul style="list-style-type: none"> • Gillick competency and Fraser guidelines • CONSENT POLICY • ReSPECT for healthcare professionals
People and Personal Development	
Personal / People Development / Leadership	<ul style="list-style-type: none"> • Accountability and delegation in practice • Report template (mcusercontent.com)
NHS Employers / HR / NHS Pension	<ul style="list-style-type: none"> • NHS Employers • Pensions Online
Health, Safety & Security	
<ul style="list-style-type: none"> • NPSA • Control of Substances Hazardous to Health (COSHH) 	
Gov UK - NHS	
CQC	<ul style="list-style-type: none"> • GP mythbusters • Examples of outstanding practice for GPs • News from the Care Quality Commission: May 2022 (govdelivery.com) • CQC update for primary medical and dental services (govdelivery.com)
MIMS	<ul style="list-style-type: none"> • Prescribing Update
Antibiotic steward-ship / Anti-microbial resistance	
Drug / Device Alerts (MHRA)	
Emergency Situations	<ul style="list-style-type: none"> • The updated National Early Warning Score and its use with suspected Sepsis • Resuscitation Council UK

Vaccines / Medications / Prescribing	<ul style="list-style-type: none"> • Protocol for ordering, storing and handling vaccines • A Competency Framework for all Prescribers • Non-medical prescribing • The Human Medicines Regulations 2012 • RCN - Non-medical prescribers • Royal Pharmaceutical Society • Standards for prescribing • Clinical Negligence Scheme for General Practice
Infection Control / Infection Statics	<ul style="list-style-type: none"> • Stay focused on infection control to anticipate the next crisis Hot topic Guidelines in Practice • NHS England » National infection prevention and control
Safe Guarding	<ul style="list-style-type: none"> • Female genital mutilation (FGM) • PREVENT • Child protection system in the UK • Safeguarding Adults • Safeguarding children: detailed information • SANDWELL MULTI-AGENCY CHILD EXPLOITATION STRATEGY 2022-2025 (mcusercontent.com) • Wolverhampton WeCAN Toolkit Relaunch - 21st June 2022 (govdelivery.com) • Webinar for multi-agency safeguarding partners Tickets, Wed 29 Jun 2022 at 14:00 Eventbrite • National review into the murders of Arthur Labinjo-Hughes and Star Hobson - GOV.UK (www.gov.uk)
Practice Policies	<ul style="list-style-type: none"> • Layout 1 (mcusercontent.com)
Audit	
Information Governance / Record Keeping	<ul style="list-style-type: none"> • Guide to Data Protection • Supporting general practice – Medical record keeping • National data sharing GP Connect and Summary Care Record Additional Information - NHS Digital
Quality & Service Improvement	
Quality, Service & Improvement	<ul style="list-style-type: none"> • The PRSB • General Practice Assessment Questionnaire (GPAQ) • Healthwatch • NHS Five Year Forward View • General Practice Forward View • NMC • Dr Jon Griffiths • NHS Confed

Roles in General Practice	<ul style="list-style-type: none"> • Standards for nursing associates • GP mythbuster 57: Health Care Assistants in General Practice
Revalidation	
Personal Practice & Development	<ul style="list-style-type: none"> • General practice nursing capabilities framework - Skills for Health
Practice Management	<ul style="list-style-type: none"> • Institute of General Practice Management • Practice Index • Primary Medical Care Policy and Guidance Manual (PGM) (v4)
Employment	
NHS Self Care & Resilience	<ul style="list-style-type: none"> • Samaritans • Mental Health at work • Calm • Supporting our NHS people • The Hub :: Black Country Healthcare NHS Foundation Trust • NHS England » Looking after you too • Address the emerging threat of burnout among primary care staff Hot topic Guidelines in Practice
Practice Transformation / Innovation Agency	<ul style="list-style-type: none"> • Register with a GP surgery service - NHS Digital • Walsall - Walsall Together Monthly Brief May 2022
Future of NHS / General Practice	<ul style="list-style-type: none"> • Consultation on the draft Guidance on good governance and collaboration - NHS England - Citizen Space
ICS / PCN	<ul style="list-style-type: none"> • What you need to know about integrated care systems RCSLT • NHS England » NHS England commissioning functions for delegation to Integrated Care Systems • NHS England » NHS England commissioning functions for delegation to Integrated Care Systems • ICS Engagement with the Adult Social Care Sector in Decision Making: a report by GGI, Care England and the Homecare Association Good Governance (good-governance.org.uk) • Social Care Report

QOF / PHOF / DES / LES / NHS Contract / CQRS / CQUIN	
Leadership	<ul style="list-style-type: none"> • Leadership Academy • Leadership Development Programme
Personalised Care	
Personalised Care / Self Care / Social Prescribing / Health Coaching	<ul style="list-style-type: none"> • Self Care forum • Personalised Care Institute • Personalised care • Social Prescribing Academy • PCC Events • Link workers for population health The King's Fund (kingsfund.org.uk)
Group consultation	
Working Differently	<ul style="list-style-type: none"> • How does the NHS in England work and how is it changing? The King's Fund (kingsfund.org.uk) • Microsoft Word - FINAL 003 250522 - Fuller report[46].docx (england.nhs.uk)
Shared Decision Making	
Equality & Diversity	
Equality & Diversity	<ul style="list-style-type: none"> • Public Health Profiles
Inclusion Health	<ul style="list-style-type: none"> • Health Creation Academic Network
Poverty / Homelessness	<ul style="list-style-type: none"> • Crisis • This is Poverty
Population Health / Health Communities	
Thrive Into Work	<ul style="list-style-type: none"> • Thrive into Work • Thrive into Work Referral form

<i>Continuation of Equality & Diversity</i>	
Health Inequalities	<ul style="list-style-type: none"> • Regulators' Pioneer Fund project: Regulatory recognition and sharing of innovative practice by NHS GP providers to reduce health inequalities CQC Public Website
Trans / Non-binary Health / LGBTQ+	<ul style="list-style-type: none"> • LGBT Foundation • NHS population screening: information for trans and non-binary people • Cervical screening for trans men and/or non-binary people
Migrant / Refugee Health	<ul style="list-style-type: none"> • THE REFUGEE & MIGRANT CENTRE
Traveller / Gypsy / Romany Health	
Veterans Health	<ul style="list-style-type: none"> • The first call for help takes courage
<i>Management of Emergency Situations</i>	
Management of Emergency Situations	<ul style="list-style-type: none"> • The updated National Early Warning Score and its use with suspected Sepsis
111	
First Contact	<ul style="list-style-type: none"> • Supporting general practice – Common pitfalls • Paediatrics for Primary Care (and anyone else) (gppaedstips.blogspot.com)
Red Flags	
Sepsis	<ul style="list-style-type: none"> • Sepsis: recognition, diagnosis and early management • Sepsis guidance implementation advice for adults • Sepsis in Children • Sepsis Trust • RCGP: Sepsis • quick SEPSIS RELATED ORGAN FAILURE ASSESSMENT

<i>Continuation of Emergency Situations</i>	
Therapeutic Monitoring	
OSCE	<ul style="list-style-type: none"> • Geeky Medics • Abdominal Examination - Demonstration - YouTube • Cardiovascular Examination - Demonstration - YouTube • Respiratory Examination - Demonstration - YouTube • Physical Diagnosis Skills - University of Washington School of Medicine • 500+ OSCE Stations, new YouTube content & more (mailerlite.com)
Role Specific	
Cervical Cytology	<ul style="list-style-type: none"> • Guide to the interim assessment • British Association for Cytopathology • Lab Tests Online
Ear Care	<ul style="list-style-type: none"> • Ear Care Centre • RNID
Wound Management	<ul style="list-style-type: none"> • Microworld • Tissue Viability Society • The BLS • Wounds on Thursdays • Bites and stings: when to prescribe an antibiotic Implementing guidelines Guidelines in Practice
Minor Surgery	
Obtaining Samples / Results	<ul style="list-style-type: none"> • Lab Tests Online

Health Promotion / Health Screening	
Health Promotion / Population Health	<ul style="list-style-type: none"> • Better Health • EXi App • Apps - Lets Get (lets-get.com)
Health Screening	<ul style="list-style-type: none"> • PHE Screening
PHE / OHID / UKHSA	<ul style="list-style-type: none"> • Knowledge & Library Services • Campaign Resources • Public Health Profiles • Health Publications • Health Profile for England 2021 • English indices of deprivation 2019
NHS Health Check	<ul style="list-style-type: none"> • NHS Health Check
NOIDS / PHE Surveillance / Syndromic Surveillance	<ul style="list-style-type: none"> • Notifications of infectious diseases (NOIDs)
Addiction/Smoking	<ul style="list-style-type: none"> • Drink Coach • Stop smoking interventions and services • Myths and Misinformation: Mapping the barriers to smoking cessation and the uptake of nicotine alternatives - Demos

Immunisation / Travel Health

- [Vaccinations and infections](#)
- [Joint Committee on Vaccination and Immunisation](#)
- [Immunisation against infectious disease](#)
- [West Midlands Immunisation Service](#)
- [Immunisation information for Health Care Services within the West Midlands area](#)
- [Vaccination of individuals with uncertain or incomplete immunisation status](#)
- [WHO vaccine-preventable diseases: monitoring system. 2020 global summary](#)
- [The Foundations of Immunization: What, Who, When and Why?](#)
- [Winter Vaccination - Prime phase: Social Media content calendar and assets - 2021](#)
- [Measles outbreak training](#)
- [Vaccine Safety Basics](#)
- [UKHSA HPV vaccination guidance | PHE/DH/DWP guideline | Guidelines](#)
- [Shoulder Injury Related to Vaccine Administration \(SIRVA\) - General Practice Notebook \(gpnotebook.com\)](#)
- [UKHSA HPV vaccination guidance | PHE/DH/DWP guideline | Guidelines](#)
- [UKHSA COVID-19 vaccination guidance | PHE/DH/DWP guideline | Guidelines](#)

Flu

- [Flu and flu vaccinations](#)
- [The national influenza immunisation programme 2021 to 2022](#)
- [Flu vaccines for the 2021 to 2022 season poster](#)
- [Appendix C: Flu vaccinator competency assessment tool](#)
- [Healthcare assistants and flu vaccinations](#)
- [Flu Campaign Resources 2021/22](#)
- [National flu and COVID-19 surveillance reports published](#)
- [National flu immunisation programme plan 2022 to 2023 - GOV.UK \(www.gov.uk\)](#)
- [UKHSA flu immunisation 2022–2023 guideline | PHE/DH/DWP guideline | Guidelines](#)

Continuation of Immunisation / Travel Health

Covid Vaccine	<ul style="list-style-type: none"> • Greenbook COVID-19 chapter 14a • Updates made to the COVID-19 vaccination elearning programme • HEE e-LfH COVID-19 vaccination programme launches hit 2 million • COVID-19 Vaccine Moderna e-learning now available • GP COVID-19 vaccine dashboard • Coronavirus (COVID-19) vaccines adverse reactions • NHS England » Open letter from NHS, charity and community leaders to people with a weakened immune system
Children	
Adults	<ul style="list-style-type: none"> • Immunisation patient group direction (PGD) templates • Shingles immunisation programme: introduction of Shingrix® letter • UKHSA HPV vaccination guidance PHE/DH/DWP guideline Guidelines
Vaccine Update	<ul style="list-style-type: none"> • Vaccine update: Issue 325, April 2022 (publishing.service.gov.uk) • Vaccine update: issue 328, May 2022, Shingrix® special edition - GOV.UK (www.gov.uk) • Vaccine update: issue 329, May 2022 - GOV.UK (www.gov.uk)
PGD	
Travel Health	<ul style="list-style-type: none"> • Travel Health Pro • Fit for Travel • Travel Health • Jane Chiodini • Corona.Help

Mental Health / Learning Disability / Disability	
Mental Health	<ul style="list-style-type: none"> • Mental Health • Mental Health UK • Mind • Place2b • Rethink Mental Illness • Young Minds • Every Mind Matters • Calm • Headspace • We Can Talk • Get Your Mind Plan • Feeling low? • Better Health - Every Mind Matters - Resources • ZSA Training • Psychiatry - Medscape • Mental Health Act Reform - Race and Ethnic Inequalities - POST (parliament.uk) • Black Country Support after Suicide Leaflet
Learning Disability	<ul style="list-style-type: none"> • Learning Disabilities • Learning Disability England • Mencap • Bild • Autism
Disability (Inc. hearing and visual)	<ul style="list-style-type: none"> • Disability Rights UK • Disability Matters • RNID - National hearing loss charity

From Cradle to...

Infant Health	<ul style="list-style-type: none">• Tommys• First Steps Nutrition Trust• Bliss• NHS App - Baby Buddy• NHS App - Peanut• ICON Toolkit• Infant formulae MIMS online• Parent-Infant Foundation (parentinfantfoundation.org.uk)• Recognising cow's milk allergy in primary care
Child Health	<ul style="list-style-type: none">• Unicef• Health Professional Academy• Premature Babies• Child and Maternal Health• Women and Child First• Child Health Information Services• Place2b• Childhood eczema• Childhood asthma• Paediatrics for Primary Care (and anyone else) (gppaedstips.blogspot.com)• Health protection in education and childcare settings - GOV.UK (www.gov.uk)
Adolescent Health	<ul style="list-style-type: none">• Adolescent Health Programme• Society for Adolescent Health and Medicine• Young Minds• Save a life - MenACWY and signs/symptoms uni/FE/student accommodation sticker - Health Publications

Mens Health	<ul style="list-style-type: none">• Mens Health Forum• Mens Health Month• Mens health.org• Mens Health UK• Men and mental health• Men's Mental Health Awareness• Prostate Cancer UK• Orchid Fighting Male Cancer• Prostate Cancer UK Facebook Page• Men's Voices Event• Movember
Women's Health	<ul style="list-style-type: none">• Womens Health Concern• Well Being of Women• Coppa Feel• Menopause Matters• The Menopause Charity• Royal College of Obstetricians and Gynaecologists - Guidelines• Pelvic Partnership• CRUK - Womens Cancer• Breast Cancer Now• Foundation for Women's Cancer• Eve Appeal• Ovarian.Org• Jo's Trust• Well Spring• Hormone-replacement therapy: what to prescribe and when Hot topic Guidelines in Practice• NICE sets out further details on menopause guideline update News and features News NICE• GPnotebook focus on women's health (contains promotional information) (mailchi.mp)

The Older Population	<ul style="list-style-type: none"> • BGS • Ageing Better • Delirium Champions - YouTube
Carers / Social Care / Care Homes	<ul style="list-style-type: none"> • The Care Provider Alliance • Skills for Care • The Care Workers' Charity • Supporting Adult Carers • Adult Social Care Update
Young Carers	
Complex Needs	
Family Planning & Sexual Health	
Family Planning	<ul style="list-style-type: none"> • Faculty of Sexual and Reproductive Healthcare Education and Training • Women 'not being warned' hospital drug interferes with contraceptives MIMS online
Reproductive	<ul style="list-style-type: none"> • Tommys • Prenatal exposure to combination therapy for epilepsy linked to neurodevelopmental risk MIMS online • Metformin 'safe in pregnancy', says MHRA MIMS online
Sexual Health / Sexual Abuse	<ul style="list-style-type: none"> • Sexual and Reproductive Health Profiles • FSRH Education & Training • UKHSA HPV vaccination guidance PHE/DH/DWP guideline Guidelines
Maternity / Neonate health	

Care of Patients with Long Term Conditions	
LTC	<ul style="list-style-type: none"> • Physical Activity for the Prevention and Management of Long-Term Conditions • Expert Insights Chiesi Air
Diabetes & Pre-Diabetes	<ul style="list-style-type: none"> • AZ Medical and Educational Goods and Services in Diabetes • Mumoactive • The mySugr App • Foot Check • NICE type 2 diabetes guideline NICE guideline Guidelines • Key learning points: managing type 2 diabetes in adults Key learning points Guidelines in Practice
Respiratory	<ul style="list-style-type: none"> • Spirometry: step by step • ARTP • British Lung Foundation • The Primary Care Respiratory Society • Are current approaches to sustainability right for your patients and practice? (contains promotional material) (mgp.co.uk) • First metered-dose inhaler certified 'carbon-neutral' MIMS online • Climate and health: applying All Our Health - GOV.UK (www.gov.uk) • PCRA Clinical Events • GPnotebook focus on respiratory medicine (contains information from AstraZeneca) (mailchi.mp)
COPD	<ul style="list-style-type: none"> • Right Breathe • GOLD COPD 2022 strategy Independent professional body guideline Guidelines • GSK: Imagine if even walking to the park made you breathless (Contains brand information) (cogora.com)
Asthma	<ul style="list-style-type: none"> • FeNO - Fractional exhaled nitric oxide - for the diagnosis and management of Asthma • Asthma UK • Asthma: diagnosis, monitoring and chronic asthma management • GINA 2021: the missing pieces in the childhood asthma puzzle • GINA: Interim Guidance About COVID-19 & Asthma • SIGN and BTS management of asthma in children guideline Independent professional body guideline Guidelines • GSK: How well controlled are your asthma patients? Is it time for a change? (contains brand info) (mgp.co.uk) • High Quality and Low Carbon Asthma Care – Greener Practice • Managing severe asthma in patients in primary care—promotional webinar invitation (webinar commissioned by Boehringer Ingelheim Limited) (mgp.co.uk)

Continuation of Long Term Conditions

Hypertension	<ul style="list-style-type: none"> • British Heart Foundation • Blood Pressure UK • Hypertension in adults: diagnosis and management • Hypertension in adults: diagnosis and treatment • NICE hypertension guideline NICE guideline Guidelines • Hypertension optimisation and management in primary care – CMB TV On Demand (cardiometabology.com)
CVD/AF	<ul style="list-style-type: none"> • QRISK®3-2018 risk calculator • Heart Rhythm Alliance • CVD risk assessment and management • AHA Journals • NHS lipid management pathway NHS guideline Guidelines
Heart Failure	<ul style="list-style-type: none"> • British Heart Foundation • British Society Guidelines
Cancer / Oncology	<ul style="list-style-type: none"> • Surviving Thyroid Cancer • Help Us Help You - Lung Cancer Symptoms • Becca Breast Cancer Support App • Breast Cancer Now • MoleCare App • Macmillian • Bowel Cancer UK • New injectable immunotherapy treatment for rare form of triple negative breast cancer recommended by NICE News and features News NICE
Chronic Kidney Disease	<ul style="list-style-type: none"> • Kidney.Org • Kidney Quality Improvement Partnership • The modern management of Chronic Kidney Disease – CMB TV On Demand (cardiometabology.com)
Liver Disease	<ul style="list-style-type: none"> • British Liver Trust • Liver Research • BRITISH ASSOCIATION FOR THE STUDY OF THE LIVER • LIVERnORTH • LIVER DISEASE AND CIRRHOSIS • Liver blood tests: how to interpret abnormal results Implementing guidelines Guidelines in Practice

Continuation of Long Term Conditions

Blood Disorders	<ul style="list-style-type: none"> • Blood Cancer • Thalassaemia • ITP • Haemophilia • UK MDS Forum • Save a life. Give plasma. • Diagnosis and management of pernicious anaemia • Haemochromatosis UK • Managing iron deficiency anaemia Video Guidelines in Practice
G.I	<ul style="list-style-type: none"> • GIST Cancer UK
ENT	
G.U	
ME / CFS / Fibromyalgia	<ul style="list-style-type: none"> • NICE outlines steps needed to put ME/CFS guideline into practice News and features News NICE
Neurological Conditions	<ul style="list-style-type: none"> • The Brain Tumour Charity • Narcolepsy.Org • ACNR • NICE epilepsies guideline NICE guideline Guidelines
Musculoskeletal Conditions	<ul style="list-style-type: none"> • Rheumatology • National Axial Spondyloarthritis Society • Musculoskeletal health • Musculoskeletal health: 5 year prevention strategic framework • Faculty of Occupational Medicine • Guide to embedding your first contact physiotherapy service
Endocrine Disorders / Metabolic Disorders	<ul style="list-style-type: none"> • Endocrinology • Turner Syndrome Support Society • Thyroid Eye Disease • British Thyroid Foundation • Thyroid UK • Pituitary • Addisons Disease • Parathyroid UK • The Royal Osteoporosis Society • Metabolic Support UK

Continuation of Long Term Conditions

Frailty	<ul style="list-style-type: none"> • Recognising frailty • Identifying frailty • CLINICAL FRAILITY SCALE
Dementia	<ul style="list-style-type: none"> • Dementia UK • Understanding dementia • My House of Memories - NHS App • Dementia profile updates • Caring for Carers Dementia Support Group (Tuesdays) • Delirium Champions • Medscape Dementia
Allergy / Auto-immune / Genetic Conditions	<ul style="list-style-type: none"> • Allergy UK • Rheumatology • Addisons Disease
Obesity	<ul style="list-style-type: none"> • Obesity UK • NHS England » The NHS Digital Weight Management Programme • Referral to Weight Management
Pain Management	<ul style="list-style-type: none"> • Pain Concern • UK career framework for pain nurses
Genomics	

Continuation of Long Term Conditions

Dermatology	<ul style="list-style-type: none"> • British Association of Dermatologists • Eczema • The British Skin Foundation • Acne vulgaris: management • The Primary Care Dermatology Society • Acne.org • Allergy UK • Urticaria • Hives • Sunburn • Causes of cancer and reducing your risk • What is Rosacea? • Rosecea • Herpes.org • Shingles • Fungal Skin Infection - Foot • The Psoriasis Association • Psoriasis • Melanoma • Skin Health Information • British Association of Plastic Reconstructive and Aesthetic Surgeons • Warts and verrucae • Rosacea: newer treatments can avoid antibiotics Implementing guidelines Guidelines in Practice • Rashes in children: what's the diagnosis? Differential diagnoses Guidelines in Practice • Facial rashes: what's the diagnosis? Differential diagnoses Guidelines in Practice
Multi-Morbidity	<ul style="list-style-type: none"> • Multimorbidity • Multimorbidity / multiple long-term conditions (MLTC)
Minor Illness / First Contact Assessment / OSCE	<ul style="list-style-type: none"> • Fact Sheets - Self Care Forum

<i>Continuation of Long Term Conditions</i>	
Other / Case Studies	<ul style="list-style-type: none"> • Ultra Rare Disease Disorders And Disabilities Foundation • MyCognition Home - NHS App • The Cold Weather Plan for England
End of Life Care	
End of Life Care	<ul style="list-style-type: none"> • ReSPECT for healthcare professionals • Hospice UK • Hospice Services
Covid-19 / Monkeypox	
Covid-19	<ul style="list-style-type: none"> • Covid Live • COVID-19 variants: genomically confirmed case numbers - GOV.UK (www.gov.uk) • The R value and growth rate - GOV.UK (www.gov.uk) • National flu and COVID-19 surveillance reports: 2021 to 2022 season - GOV.UK (www.gov.uk) • COVID-19: information and advice for health and care professionals - GOV.UK (www.gov.uk) • NHS England » National infection prevention and control • COVID-19 latest guidance (rcgp.org.uk)
Long Covid	<ul style="list-style-type: none"> • Supporting your recovery after COVID-19 • Long Covid Toolkit • Long term effects of COVID (Long COVID) • Post-COVID Syndrome (Long COVID) • COVID-19 Yorkshire Rehabilitation Screening Tool • FOM Guidance • Lung health care after COVID-19 • What people told us about Long Covid Healthwatch
Monkeypox	<ul style="list-style-type: none"> • Monkeypox: background information - GOV.UK (www.gov.uk) • Principles for monkeypox control in the UK: 4 nations consensus statement - GOV.UK (www.gov.uk) • De-isolation and discharge of monkeypox-infected patients: interim guidance - GOV.UK (www.gov.uk) • Monkeypox cases confirmed in England – latest updates - GOV.UK (www.gov.uk) • NHS England » Monkeypox • Principles for monkeypox control in the UK: 4 nations consensus statement - GOV.UK (www.gov.uk) • Information on monkeypox and our investigation into recent cases - UK Health Security Agency (blog.gov.uk)

News & Views	
Digital News / Remote Consultations	<ul style="list-style-type: none"> • Digital Health News Webinars • Digital Health News • NHS Digital • Your daily news updates from Digital Health (campaign-archive.com) • Read our new Document Management Special Report (mailchi.mp) • Your daily news updates from Digital Health (campaign-archive.com) • Smart New World – The Queen's Nursing Institute (qni.org.uk) • Your daily news updates from Digital Health (campaign-archive.com) • Digital developments from the Midlands Shared care records, EPR journeys, e-nursing documentation (mailchi.mp) • Digital Health News - 2 June 2022 (mailchi.mp)
PSNC News / Pharmacy	<ul style="list-style-type: none"> • National Pharmacy Association • Royal Pharmaceutical Society • Medicines Learning Portal • Specialist Pharmacy Service • PSNC Newsletter: 27th May (mailchi.mp)# • PSNC Newsletter: 30th May (mailchi.mp) • Pharmacy Review Steering Group Update: Just over two weeks left to vote on proposals (mailchi.mp) • PSNC Newsletter: 1st June (mailchi.mp)
Pulse / GP Online / HSJ / NB Medical	<ul style="list-style-type: none"> • GP Online • HSJ • Pulse Today
Primary Care Update / PCC / PPP	<ul style="list-style-type: none"> • Public Policy Projects News • Primary Care Bulletin
Health Care Leaders Newsletters	
Kings Fund	<ul style="list-style-type: none"> • The Kings Fund • Ideas that change health and care • Events The King's Fund (kingsfund.org.uk)
World Health Organisation	<ul style="list-style-type: none"> • WHO • OpenWHO

Continuation News & Views

<p>IHCT / CCG / STP / Healthier Futures</p>	<ul style="list-style-type: none"> • Healthier Futures • Black Country & West Birmingham CCG • Dudley Integrated Health and Care • Dudley CCG • Home :: Black Country Healthcare NHS Foundation Trust • Black Country Integrated Care Board Members :: Black Country and West Birmingham CCG (blackcountryandwestbirmccg.nhs.uk)
<p>NHSI / NHSE</p>	
<p>University / Student Nurses</p>	
<p>Medisa / Univadis / Geeky Medics / GP Notebook / Medscape</p>	<ul style="list-style-type: none"> • Univadis Newsletter • Univadis Nurses Headlines • Medisa • Geeky Medics • Medscape Nurses • GP Notebook • GPnotebook quick update (mailchi.mp) • 500+ OSCE Stations, new YouTube content & more (mailerlite.com)
<p>Nurse Guidelines</p>	<ul style="list-style-type: none"> • Expert Insights Chiesi Air • Upd
<p>The Health Foundation</p>	<ul style="list-style-type: none"> • The Health Foundation
<p>The Health Care Leaders Update</p>	<ul style="list-style-type: none"> • Health Care Leader News
<p>Practice Index</p>	
<p>Innovation Agency</p>	<ul style="list-style-type: none"> • Innovation Agency Exchange
<p>NMC</p>	<ul style="list-style-type: none"> • NMC • NMC set to overhaul public health and community nursing standards (rcni.com) • NMC register is at the highest level ever (news-nmc.org.uk)

Continuation News & Views

RCN	<ul style="list-style-type: none"> • RCN • Overworked, no lunch breaks, chronic staff shortages – nurses speak out (rcni.com) • NHS pay: nurses should never be embarrassed to demand more (rcni.com) • Nurses call for ban on ‘abhorrent’ LGBT conversion therapy (rcni.com) • Incivility at work: a risk to patient safety and nurse well-being (rcni.com) • Examining the preventive health-screening activities of mental health nurses (rcni.com) • Role of retrieval nurse practitioners in safely transferring critically ill adults and children during COVID-19 (rcni.com) • Practice learning supervision: how to keep relationships positive (rcni.com)
Nursing in Practice / Nursing Standard / Independent Nurse	<ul style="list-style-type: none"> • Nursing Times • Independent Nurse Magazine • Practice Nursing • Practice Nursing Bulletin • GPN Bulletin • Overcoming OSCE anxiety (mah-communications.co.uk)
QNI	<ul style="list-style-type: none"> • QNI • Talk To Us © – The Queen's Nursing Institute (qni.org.uk) • Queen's Nurse update May 2022 (mailchi.mp) • Smart New World – The Queen's Nursing Institute (qni.org.uk)
CMO / CNO	
WHO	<ul style="list-style-type: none"> • WHO
Nice	<ul style="list-style-type: none"> • NICE
RCGP / BMA / The Lancet	<ul style="list-style-type: none"> • The Lancet • British Medical Journal • Royal College of General Practitioners
Midlands Academic Health Science Network	<ul style="list-style-type: none"> • WMAHSN Network • WMAHSN May Update
Healthwatch	<ul style="list-style-type: none"> • Healthwatch
Other	

Free Training / Webinars / Meetings / CPD

Development / Information and Knowledge	<ul style="list-style-type: none"> • FutureProof Health Training & Events • Red Whale Training • LATEST WEBINARS FROM ISSUES & ANSWERS • Nursing Events • NNG Conference week - Register today (mahealthcareevents.co.uk) • Agenda - Guidelines Live 2022 • London 2022 Registration - MIMS Learning Live • CVD Training - Lipid Management Tickets, Multiple Dates Eventbrite • Managing severe asthma in patients in primary care—promotional webinar invitation (webinar commissioned by Boehringer Ingelheim Limited) (mgp.co.uk) • Agenda Primary Care Learnings (mimsworkshops.co.uk) • The modern management of Chronic Kidney Disease – CMB TV On Demand (cardiometabology.com) • Hypertension optimisation and management in primary care – CMB TV On Demand (cardiometabology.com) • MOOCs - start to enjoy learning now OpenWHO • AstraZeneca: Invitation to Long Term Conditions Leadership Forum (AstraZeneca medicines will be discussed at this meeting) • New eLearning module: Deep dive on DPP-4 inhibitors (contains promotional material from Boehringer Ingelheim) (mgp.co.uk) • London 2022 Registration - MIMS Learning Live
Free to RCN	
MIMMs Learning	<ul style="list-style-type: none"> • Primary care specialty (mimslearning.co.uk)

Continuation of Free Training / Webinars / Meetings / CPD

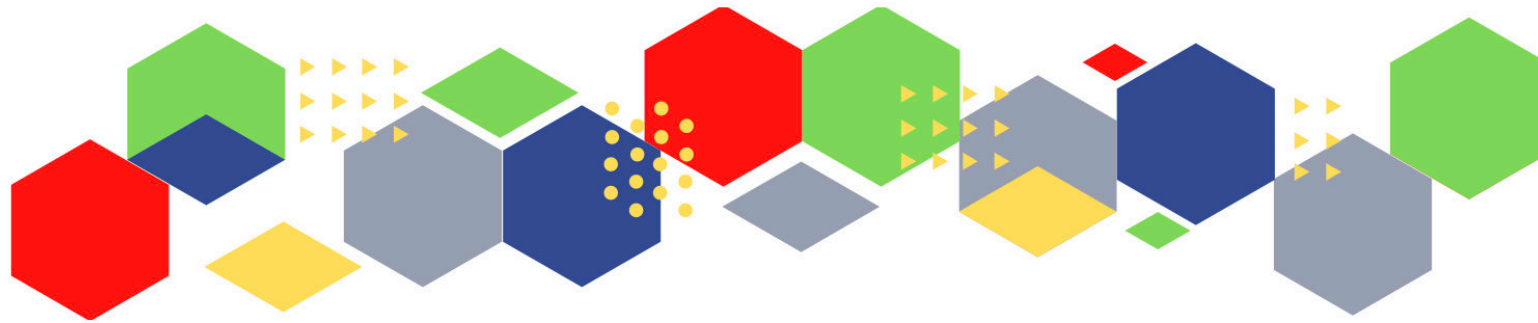
Future Proof Health Training	<ul style="list-style-type: none"> • Type 2 Diabetes and the medication choices in diabetes care and covid • Menopause Day • ENT 1/2 Day
BCWB Training Hub	<ul style="list-style-type: none"> • Latest news from the Black Country and West Birmingham Training Hub (campaign-archive.com)
Evidence based care	
Eventbrite	<ul style="list-style-type: none"> • Future Proof Health Eventbrite Page • CVD Training - Lipid Management Tickets, Multiple Dates Eventbrite • Time to Look After Yourself - Why Self-Care is Essential and Not Selfish Tickets, Mon 13 Jun 2022 at 13:00 Eventbrite • Time to Look After Yourself - Why Self-Care is Essential and Not Selfish Tickets, Tue 21 Jun 2022 at 18:00 Eventbrite • Poverty Challenge Connect Summit Tickets, Mon 27 Jun 2022 at 09:30 Eventbrite
e-Learning for Health	<ul style="list-style-type: none"> • New elearning session highlights dermatological side effects of COVID-19 • New COVID-19 community contact tracing programme now available • Staff Recovery Resources for critical care and the wider health workforce recovering from the COVID-19 pandemic • MindEd infographic highlights programme's success during COVID-19 • Long COVID elearning session available • The Changing Story of Cancer programme • Updates to the Flu Immunisation elearning programme for the 2021/22 flu season • Flu Immunisation programme - elearning • Foundation elearning programme update September 2021 • Virtual wards enabled by technology - elearning for healthcare (e-lfh.org.uk)

Continuation of Free Training / Webinars / Meetings / CPD

YouTube	<ul style="list-style-type: none"> • NHS England • Black Country Healthcare - YouTube
Blogs/Vlogs	<ul style="list-style-type: none"> • An increase in Hepatitis Cases in Children - UK Health Security Agency (blog.gov.uk) • UKHSA'S weekly surveillance report: focusing on 'Pillar 1' data - UK Health Security Agency (blog.gov.uk) • What is Lyme disease, and why do we need to be tick aware? - UK Health Security Agency (blog.gov.uk) • What to do if you have symptoms of a respiratory infection including COVID-19, or a positive COVID-19 test - UK Health Security Agency (blog.gov.uk) • London's communities remain vulnerable to COVID-19 without full vaccine protection - UK Health Security Agency • How science can protect us from the health effects of climate change - UK Health Security Agency • Thunderstorm asthma and public health – looking back to move forward - UK Health Security Agency • Taking the sting out of new and emerging health threats - UK Health Security Agency
Area Bulletins	

Continuation of Free Training / Webinars / Meetings / CPD

Podcasts	<ul style="list-style-type: none"> • The Nursing Handover Podcast • Nursing Standard Podcasts • What Makes a Nurse? • The MedicsPro Podcast • Nursing Matters • Welcome to the BJN Podcast • Why we care • EBN podcast • This Is Nursing • Maroon Mindset • Teach me, I'm a Nurse • Past Caring • RCGP eLearning podcast • The BMJ Podcast • Primary Care Network podcasts • The Professional Support Unit's Pandemic Podcast • How can public health nurses help deliver the Healthy Child Programme this winter? • Talking GP • Podcast – Matthew Winn – ICS Incoming.... Primary Care and Community Trusts • NB Hot Topics Podcast • Podcast: Will the rising cost of living be paid for by our health? (healthfdn.org.uk) • Lovegrove on Health - Podcast episode #4 - Skills for Health • Latest podcast episodes from GPnotebook (mailchi.mp) • The Next GenCast on Apple Podcasts
Research	<ul style="list-style-type: none"> • Science Daily • Multimorbidity / multiple long-term conditions (MLTC) • Results of Research Excellence Framework are published – UKRI • Leading UK research facilities to move closer to net zero – UKRI • Improving international research collaboration – UKRI • Knowledge exchange framework – UKRI
Freebies	<ul style="list-style-type: none"> • Blue Light Card
Other	



Thank you for reading Future Proof Health's weekly news!

If you missed past issues, please click [here](#) to view them

More information can be found on our website, [here](#)

Don't forget to like us on [Facebook](#) & Follow us on [Twitter](#)

