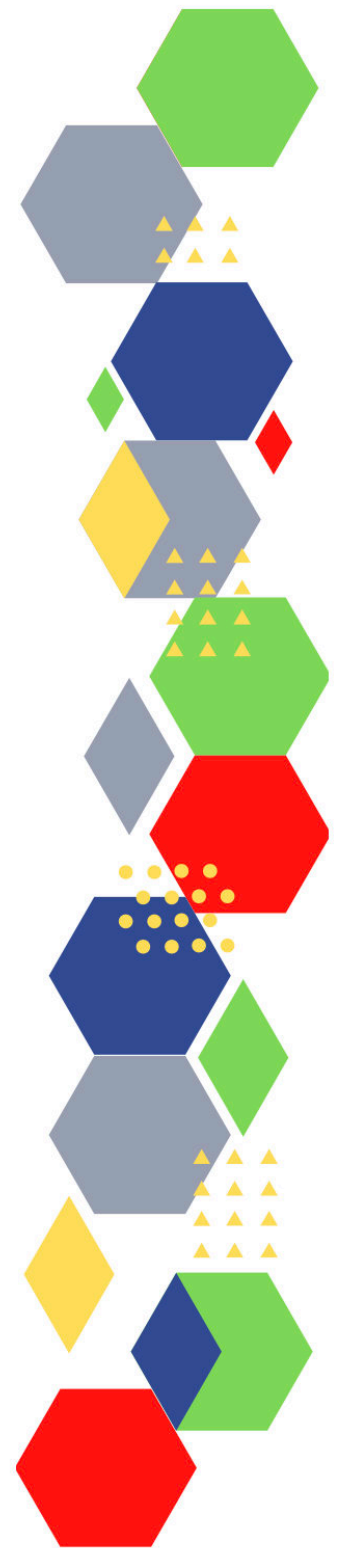
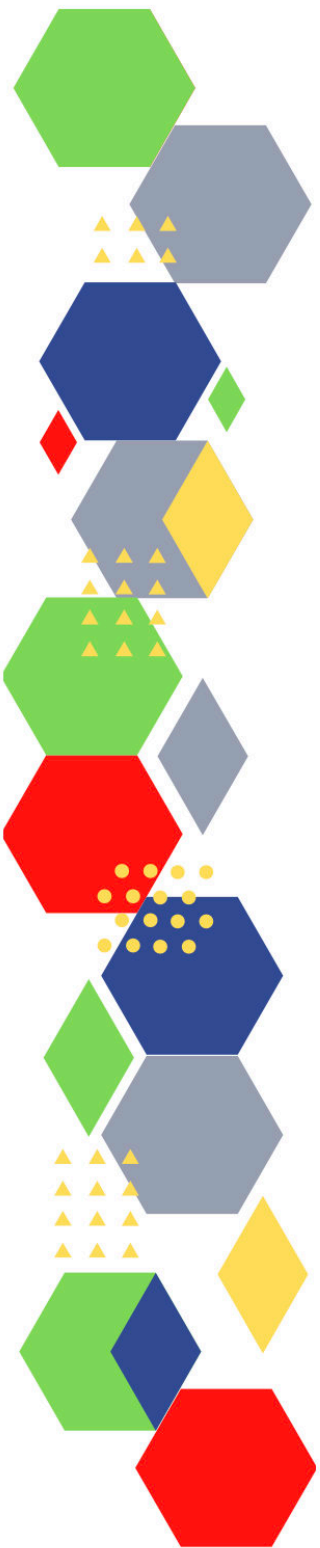




Future Proof Health Presents

Weekly News

19th August 2022



Communication	
Communication with Patients	<ul style="list-style-type: none"> • Read Maria's interview (healthfdn.org.uk)
Communication within Teams	
Consent	<ul style="list-style-type: none"> • Gillick competency and Fraser guidelines • ReSPECT for healthcare professionals
People and Personal Development	
Personal / People Development / Leadership	<ul style="list-style-type: none"> • Accountability and delegation in practice • Leadership for Personalised Care Regional Programme. Applications are now open!
NHS Employers / HR / NHS Pension	<ul style="list-style-type: none"> • NHS Employers • Pensions Online • NHS Pensions – Changes to Members Contributions from 1st October 2022
Health, Safety & Security	
	<ul style="list-style-type: none"> • NPSA • Control of Substances Hazardous to Health (COSHH) • Weekly Digest Newsletter: Working in hot temperatures (govdelivery.com)
Gov UK - NHS	
CQC	<ul style="list-style-type: none"> • GP mythbusters • Find the latest information and guidance from CQC
MIMS	<ul style="list-style-type: none"> • Prescribing Update • Medicine shortages increasing, say GPs (mkt6316.com)
Antibiotic steward-ship / Anti-microbial resistance	<ul style="list-style-type: none"> • Antimicrobial resistance surveillance pilot site selection and database extension - GOV.UK (www.gov.uk) • NHS England » NHS lands breakthrough in global battle against superbugs • Antibiotic Guardian 2022 Shared Learning & Awards • REGISTER YOUR ORGANISATION'S ACTIVITIES FOR WORLD ANTIBIOTIC AWARENESS WEEK AND EUROPEAN ANTIBIOTIC AWARENESS DAY
Drug / Device Alerts (MHRA)	<ul style="list-style-type: none"> • Drug Safety Update (mhradrugsafety.org.uk)
Emergency Situations	<ul style="list-style-type: none"> • Resuscitation Council UK

<p>Infection Control / Infection Statics</p>	<ul style="list-style-type: none"> • NHS England » National infection prevention and control • Complete guide to hand washing (independentnurse.co.uk) • WAAW/EAAD 2021 – Guide to recording organisational videos <ul style="list-style-type: none"> • Day 1 – Friday 18th November: ‘Prevention’ (including Infection Prevention and Control measures and vaccination). • Day 2 – Monday 21st November: ‘Antimicrobials in clinical practice’ (antibiotic course length, promoting shorter course length, empiric prescribing, intravenous-oral switch, promotion of current clinical guidelines). • Day 3 – Tuesday 22nd November: ‘Optimising diagnostics’ (increasing understanding of established and innovative methods of detection of infection, antibiotic-resistant or otherwise). • Day 4 – Wednesday 23rd November: ‘Antimicrobials and untrue or spurious allergy’ (including issues such as untrue penicillin allergy labels and de-labelling spurious antibiotic allergy labels) • Day 5 – Thursday 24th November: ‘Antimicrobial resistance and the environment/sustainability and research’ (linking AMR with environmental considerations, such as disposal of antibiotics and environmental contamination. One Health approaches to tackling AMR through research may also be highlighted on this day).
<p>Vaccines / Medications / Prescribing</p>	<ul style="list-style-type: none"> • Protocol for ordering, storing and handling vaccines • A Competency Framework for all Prescribers • Non-medical prescribing • The Human Medicines Regulations 2012 • RCN - Non-medical prescribers • Royal Pharmaceutical Society • Standards for prescribing • Clinical Negligence Scheme for General Practice • Home - electronic medicines compendium (emc) • Drug shortages - live tracker MIMS online • NHS saves £1.2 billion on medicines over three years
<p>Safe Guarding</p>	<ul style="list-style-type: none"> • Female genital mutilation (FGM) • PREVENT • Child protection system in the UK • Safeguarding Adults • Safeguarding children: detailed information • Wolverhampton - WeCAN Toolkit Relaunch - 21st June 2022 (govdelivery.com) • Forced Marriage Unit statistics 2021 (www.gov.uk) • What is FGM? (independentnurse.co.uk)
<p>Practice Policies</p>	<ul style="list-style-type: none"> • Nursing Management RCNi • KO41b Primary Care (GP and Dental) Complaints Collection - NHS Digital
<p>Audit</p>	

Information Governance / Record Keeping	<ul style="list-style-type: none"> • Guide to Data Protection • Supporting general practice – Medical record keeping • Update - Access to a deceased patients record or access to a Health Record (pcsengland.co.uk) • One Health and Care :: Black Country ICS (one-health-care.net) • GP staff survey summary report - General Practice Data for Planning and Research (GDPR) - NHS Digital
Quality & Service Improvement	
Quality, Service & Improvement	<ul style="list-style-type: none"> • The PRSB • General Practice Assessment Questionnaire (GPAQ) • Healthwatch • NHS Five Year Forward View • General Practice Forward View • NMC • Dr Jon Griffiths Blog • NHS Confed • NHS England » Freedom to speak up
Roles in General Practice	<ul style="list-style-type: none"> • Standards for nursing associates • GP mythbuster 57: Health Care Assistants in General Practice • How NHS Knowledge and Library Services can support AHPs - YouTube (createsend1.com)
Revalidation	
Personal Practice & Development	<ul style="list-style-type: none"> • General practice nursing capabilities framework - Skills for Health (createsend1.com)
Practice Management	<ul style="list-style-type: none"> • Institute of General Practice Management • Practice Index • Recruit and retain young people toolkit NHS Employers
Employment	<ul style="list-style-type: none"> • Leaving a legacy behind (independentnurse.co.uk)
NHS Self Care & Resilience	<ul style="list-style-type: none"> • Samaritans • Mental Health at work • Calm • Supporting our NHS people • The Hub :: Black Country Healthcare NHS Foundation Trust • Mental health nurses struggle to find time to take part in CPD (rcni.com) • Health & Wellbeing (sharepoint.com)

Practice Transformation / Innovation Agency	<ul style="list-style-type: none"> • NHS England » NHS estates and facilities workforce action plan • A COMMUNITY POWERED NHS
Future of NHS / General Practice / NHS Recovery	<ul style="list-style-type: none"> • NHS England • NHS England » Primary care • NHS mandate 2022 to 2023 • The distribution of doctor quality: evidence from cardiologists in 22/30 England • Direct and indirect health impacts of COVID-19 in England: emerging Omicron impacts - GOV.UK (kingsfundmail.org.uk) • NHS England » NHS marks milestone in recovery plan as longest waits virtually eliminated • District nurse shortage having 'dire' effect on patients (rcni.com) • Social care staff to benefit from improved career options and training - GOV.UK (www.gov.uk) • The inflation squeeze on public services - Institute For Fiscal Studies - IFS (kingsfundmail.org.uk) • Read the briefing (kingsfundmail.org.uk)
ICS / ICB / ICP / PCN Commissioning	<ul style="list-style-type: none"> • Integrated care (england.nhs.uk) • Read the guide (kingsfundmail.org.uk) • Guidance and briefings - Care Provider Alliance (kingsfundmail.org.uk) • Movie about the Black Country Integrated Care System - YouTube • Black Country ICS • Black Country ICB • Staff Briefing
QOF / PHOF / DES / LES / NHS Contract / CQRS / CQUIN	<ul style="list-style-type: none"> • NHS England » GP Contract • Personal Health Budgets: Quarter 4 2021-22 - NHS Digital
Leadership / Innovation	<ul style="list-style-type: none"> • Leadership Academy • Free learning and development offers (campaign-archive.com)
Greener NHS	<ul style="list-style-type: none"> • Roundtable discussion: 'The climate emergency is a health emergency' Local Government Chronicle (LGC) (lgcplus.com) • Greener Practice – Greener Practice – UK's primary care sustainability network (createsend1.com) • Practical toolkit (createsend1.com)

Personalised Care	
Personalised Care / Self Care / Social Prescribing / Health Coaching	<ul style="list-style-type: none"> • Self Care forum • Personalised Care Institute • Personalised care • Social Prescribing Academy • Leadership for Personalised Care Leadership Framework Programmes for leaders in healthcare, social care and beyond (createsend1.com) • PCC Events • Personalising public health (independentnurse.co.uk)
Group consultation	
Working Differently	<ul style="list-style-type: none"> • A Community Powered NHS
Shared Decision Making	<ul style="list-style-type: none"> • NHS England » Choice • NHS England » The Healthcare Inequalities Improvement Dashboard • NHS England » Decision support tools (createsend1.com) • NHS England » Shared decision making (createsend1.com) • NICE standards framework for shared decision making support tools, including patient decision aids (createsend1.com) • NHS England » Decision support tools: making a decision about a health condition
Equality & Diversity	
Equality & Diversity	<ul style="list-style-type: none"> • Public Health Profiles • NHS England » Support for our diverse colleagues (createsend1.com)
Inclusion Health	<ul style="list-style-type: none"> • Health Creation Academic Network • Inequality on the inside
Poverty / Homelessness	<ul style="list-style-type: none"> • Crisis • This is Poverty • Poverty, economic inequality and mental health • 1 in 5 key worker households have children living in poverty, (kingsfundmail.org.uk)
Population Health / Health Communities	<ul style="list-style-type: none"> • Making it personal – population health management and the NHS Emerald Insight • Population health framework (nhsproviders.org) • Population health management Deloitte UK

<i>Continuation of Equality and Diversity</i>	
Thrive Into Work	<ul style="list-style-type: none"> • Thrive into Work • Thrive into Work Referral form
Health Inequalities	<ul style="list-style-type: none"> • NHS News • Addressing local inequalities through employment NHS Employers • Read Jo's blog (healthfdn.org.uk) • Reflections from Newham (healthfdn.org.uk) • Reducing health disparities: the role of community businesses in community-centred systems - GOV.UK (www.gov.uk)
Trans / Non-binary Health / LGBTQ+	<ul style="list-style-type: none"> • LGBT Foundation • NHS population screening: information for trans and non-binary people • Cervical screening for trans men and/or non-binary people • Home - Pride House Birmingham (pridehousebham.org.uk)
Migrant / Refugee Health	<ul style="list-style-type: none"> • THE REFUGEE & MIGRANT CENTRE • Supporting refugee and migrant health care in England The King's Fund (kingsfund.org.uk)
Traveller / Gypsy / Romany Health	<ul style="list-style-type: none"> • Gypsy Roma and Traveller History and Culture The Traveller Movement • Friends, Families and Travellers (gypsy-traveller.org)
Veterans Health	<ul style="list-style-type: none"> • The first call for help takes courage
Management of Emergency Situations	
Management of Emergency Situations	<ul style="list-style-type: none"> • Diagnosis and management of anaphylaxis (independentnurse.co.uk) • Practice Nursing - Acute onset low back pain leading to a diagnosis of cauda equina syndrome: a case study • Practice Nursing - Anaphylaxis: how to recognise and manage in primary care
111 / Emergency Care	<ul style="list-style-type: none"> • NHS England » Why think Same Day Emergency Care? One-page guides for ambulance and NHS 111 clinicians

<i>Continuation of Management of Emergency Situations</i>	
First Contact	<ul style="list-style-type: none"> • Supporting general practice – Common pitfalls • Paediatrics for Primary Care (and anyone else) (gppaedstips.blogspot.com)
Red Flags	
Sepsis	<ul style="list-style-type: none"> • Sepsis: recognition, diagnosis and early management • Sepsis guidance implementation advice for adults • Sepsis in Children • Sepsis Trust • quick SEPSIS RELATED ORGAN FAILURE ASSESSMENT • NMC OSCE NEWS CHARTS / NEWS 2 / National Early Warning Scoring System Explained / How to Chart OSCE - YouTube • Ep 50 – Post-sepsis syndrome - GPnotebook Podcast
Therapeutic Monitoring	<ul style="list-style-type: none"> • Guidelines for Therapeutic Drug Monitoring (nbt.nhs.uk)
OSCE	<ul style="list-style-type: none"> • Geeky Medics • Abdominal Examination - Demonstration - YouTube • Cardiovascular Examination - Demonstration - YouTube • Respiratory Examination - Demonstration - YouTube • Physical Diagnosis Skills - University of Washington School of Medicine • Practice Nursing - Assessment and examination of the respiratory system
Role Specific	
Cervical Cytology	<ul style="list-style-type: none"> • Guide to the interim assessment • British Association for Cytopathology • Lab Tests Online • HPV vaccine alongside surgery may reduce risk of cervical lesions returning - Nursing in Practice (cogora.com) • Practice Nursing - Understanding HPV and cervical screening

Continuation of Role Specific

Ear Care	<ul style="list-style-type: none"> • Ear Care Centre • RNID
Wound Management	<ul style="list-style-type: none"> • Microworld • Tissue Viability Society • The BLS • Practice Nursing - Preventing skin tears among older adults in general practice <i>Please bare in mind you may have to register with some of the websites below</i> • Basic wound care – clinical skills (independentnurse.co.uk) • Wound healing I Free Nursing CPD Course Child Health Academy (healthprofessionalacademy.co.uk) • Learning zone - E-Learning, Products in practice and LZ:TV modules - Journal of Community Nursing (jcn.co.uk) • (2) Part Two - Leg Ulcer Series: Interim Care - Progressing towards self-care Facebook • Virtual Lunch Meeting: Time to discover effective exudate management with Zetuvit® Plus Silicone Border - Journal of Community Nursing (jcn.co.uk) • Virtual Lunch Meeting: Transparent wound dressings: Demonstrating the value of Mepitel® One - Journal of Community Nursing (jcn.co.uk) • Virtual Lunch Meeting: TENA SmartCare: Changing the landscape of continence care - Journal of Community Nursing (jcn.co.uk) • Virtual Lunch Meeting: Revolutionising self care with ReadyWrap™ - Journal of Community Nursing (jcn.co.uk) • VIRTUAL LUNCH MEETING: LEARN HOW A NICE RECOMMENDED TREATMENT RANGE REDUCES WOUND HEALING TIME (jcn.co.uk) • Virtual Lunch Meeting: Clean and kill infection with UrgoClean Ag - Journal of Community Nursing (jcn.co.uk) • Chronic oedema: assessment, compression and monitoring (independentnurse.co.uk) • Medical Adhesive-Related Skin Injuries (MARSI): with a Primary Care Focus - Sponsored by Clinimed (independentnurse.co.uk) • Burns Wound Assessment
Minor Surgery	
Obtaining Samples / Results	<ul style="list-style-type: none"> • Lab Tests Online

Health Promotion / Health Screening	
Health Promotion / Population Health	<ul style="list-style-type: none"> • Better Health • Dudley - Free training to run exercise sessions (govdelivery.com)
Health Screening	<ul style="list-style-type: none"> • PHE Screening
PHE / OHID / UKHSA	<ul style="list-style-type: none"> • Knowledge & Library Services • Campaign Resources • Public Health Profiles • Health Publications • Health Profile for England 2021 • English indices of deprivation 2019 • Personalising public health (independentnurse.co.uk) • Health Protection Report volume 16 (2022) - GOV.UK (www.gov.uk) • PHE Strategy 2020 to 2025 - GOV.UK (www.gov.uk) • first national UKHSA conference (Inks.gd)
NHS Health Check	<ul style="list-style-type: none"> • NHS Health Check
NOIDS / PHE Surveillance / Syndromic Surveillance	<ul style="list-style-type: none"> • Deaths registered weekly in England and Wales, provisional: week ending 29 July 2022 (kingsfundmail.org.uk) • Notifications of infectious diseases (NOIDs) - GOV.UK (Inks.gd) • Syndromic surveillance: systems and analyses - GOV.UK (Inks.gd) • Notifiable diseases: causative agents reports for 2022 - GOV.UK (kingsfundmail.org.uk) • Notifications of infectious diseases (NOIDs)
Addiction/Smoking	<ul style="list-style-type: none"> • Drink Coach • Stop smoking interventions and services • Commissioning quality standard: alcohol and drug services - GOV.UK (www.gov.uk) • Commissioning quality standard: alcohol and drug treatment and recovery guidance - GOV.UK (kingsfundmail.org.uk) • Commissioning quality standard: alcohol and drug services - GOV.UK (kingsfundmail.org.uk) • Vaping → (gpnotebook.com)

Immunisation / Travel Health

- [Joint Committee on Vaccination and Immunisation](#)
- [Immunisation against infectious disease](#)
- [West Midlands Immunisation Service](#)
- [Vaccination of individuals with uncertain or incomplete immunisation status](#)
- [Immunisation Queries: Immunisation information for Health Care Services within the West Midlands area](#)
- [Immunisation](#)
- [Vaccine Taskforce to merge with UKHSA and OLS - GOV.UK \(www.gov.uk\)](#)
- [Practice Nursing - You know where you can stick that ... or do you? Where to inject the deltoid and why](#)
- [Practice Nursing - Pneumococcal disease and vaccination: recent changes to the schedule](#)
- [PCN Study Day 2022 - Immunisation Update \(mahealthcareevents.co.uk\)](#)
- [Joint Committee on Vaccination and Immunisation statement on vaccination strategy for the ongoing polio incident](#)
- [News story: All children aged 1 to 9 in London to be offered a dose of polio vaccine](#)
- [Polio booster campaign resources \(leaflet\)](#)
- [Health Publications Website - to order free paper copies for parents and carers. Use code: POLIO1EN](#)
- [Correspondence: Polio vaccination campaign letter](#)
- [Guidance: Inactivated polio vaccine \(IPV\) booster: information for healthcare practitioners](#)
- [Social media assets for polio vaccination announcement](#)

Flu	<ul style="list-style-type: none"> • Flu and flu vaccinations • The national influenza immunisation programme 2021 to 2022 • Flu vaccines for the 2021 to 2022 season poster • Appendix C: Flu vaccinator competency assessment tool • Healthcare assistants and flu vaccinations • Seasonal influenza vaccine uptake in GP patients: winter season 2021 to 2022 (www.gov.uk) • Current Issues in Influenza: an expert panel discussion (independentnurse.co.uk)
Covid Vaccine	<ul style="list-style-type: none"> • Greenbook COVID-19 chapter 14a • COVID-19 Vaccine Moderna e-learning now available • GP COVID-19 vaccine dashboard • Updates made to the COVID-19 vaccination learning programme • See Skills For Care's website

<i>Continuation of Immunisation / Travel Health</i>	
Children	<ul style="list-style-type: none"> • Changes to routine vaccination schedule recommended by JCVI (mkt6316.com)
Adults	<ul style="list-style-type: none"> • Immunisation patient group direction (PGD) templates • Shingles immunisation programme: introduction of Shingrix® letter • JCVI recommends single HPV vaccine dose for under 25s (cogora.com)
Vaccine Update	<ul style="list-style-type: none"> • Vaccine update: issue 330, June 2022, COVID-19 spring special edition - GOV.UK (www.gov.uk) • Vaccine update: issue 329, May 2022 - GOV.UK (www.gov.uk) • Vaccine update: issue 328, May 2022, Shingrix® special edition - GOV.UK (www.gov.uk) • Vaccine update: issue 327, May 2022, SCID, TB and BCG special edition (www.gov.uk) • Vaccine update: issue 326, April 2022, HPV special edition - GOV.UK (www.gov.uk) • Vaccine update: issue 325, April 2022, flu special edition - GOV.UK (www.gov.uk)
PGD	<ul style="list-style-type: none"> • Hib/MenC: patient group direction (PGD) template - GOV.UK (www.gov.uk)
Travel Health	<ul style="list-style-type: none"> • Travel Health Pro • Fit for Travel • Travel Health • Jane Chiodini • Corona.Help • Visiting friends and relatives abroad: health advice • Travelling abroad to visit friends and relatives: Advice for travellers • Mosquito bite avoidance: advice for travellers • Practice Nursing - Guidelines for malaria prevention in travellers: what is new? • Practice Nursing - Rabies: an update for nurses in general practice

Mental Health / Learning Disability / Disability

<p>Mental Health</p>	<ul style="list-style-type: none"> • Mental Health • Mental Health UK • Mind • Place2b • Rethink Mental Illness • Young Minds • Every Mind Matters • Calm • Headspace • Better Health - Every Mind Matters - Resources • ZSA Training • NHS > Mental Health • Practice Nursing - Improving physical health in people with severe mental illness • Practice Nursing - The role of primary care in preventing male suicide • Download the briefing (healthfdn.org.uk) • CPD for mental health nurses: how to find tailored opportunities (rcni.com) • Look Out For Wolverhampton (outlook.com)
<p>Learning Disability</p>	<ul style="list-style-type: none"> • Learning Disabilities • Learning Disability England • Mencap • Bild • Autism • Building the right support for people with a learning disability and autistic people - GOV.UK (www.gov.uk) • HEE produces new guides to help people with learning disabilities and autism Health Education England • screen time and autism spectrum disorder (ASD) - General Practice notebook (gpnotebook.com) • ADHD - what is it, and how can it be treated? (independentnurse.co.uk)
<p>Disability (Inc. hearing and visual)</p>	<ul style="list-style-type: none"> • Disability Rights UK • Disability Matters • RNID - National hearing loss charity • How to value non-verbal communication over spoken language (rcni.com)

From Cradle to...

<p>Infant Health</p>	<ul style="list-style-type: none"> • Tommys • First Steps Nutrition Trust • Bliss • ICON Toolkit • Health visitor numbers fall as overall nurse numbers increase - Nursing in PracticeNursing in Practice (cogora.com) • infantile haemangioma - General Practice notebook (gpnotebook.com) • Infant Allergy (independentnurse.co.uk) • What's safe to use on newborn baby skin? (independentnurse.co.uk)
<p>Child Health</p>	<ul style="list-style-type: none"> • Unicef • Health Professional Academy • Premature Babies • Child and Maternal Health • Women and Child First • Child Health Information Services • Place2b • Childhood eczema • Childhood asthma • Paediatrics for Primary Care (and anyone else) (gppaedstips.blogspot.com) • Me first: Helping health and care professionals communicate more effectively with children and young people • Rashes in children: what's the diagnosis? Differential diagnoses Guidelines in Practice • NHS England » North East and North Cumbria take an integrated approach to addressing children's healthcare inequalities (createsend1.com) • Overview Social, emotional and mental wellbeing in primary and secondary education Guidance NICE • NHS England » NHS boosts children's mental health workforce by 40% • Overview Social, emotional and mental wellbeing in primary and secondary education Guidance NICE • Infant Allergy Registration now open (mahealthcareevents.co.uk) • Download the briefing (healthfdn.org.uk) • Paediatric food allergies (independentnurse.co.uk)

Adolescent Health	<ul style="list-style-type: none"> • Adolescent Health Programme • Society for Adolescent Health and Medicine • Young Minds • COYL Heads Up Report July 2022
Mens Health	<ul style="list-style-type: none"> • Mens Health Forum • Mens Health Month • Mens health.org • Mens Health UK • Men and mental health • Men's Mental Health Awareness • Prostate Cancer UK • Orchid Fighting Male Cancer • Prostate Cancer UK Facebook Page • Movember • Practice Nursing - Management pathways for erectile dysfunction in primary care • Practice Nursing - The role of primary care in preventing male suicide • Lower urinary tract symptoms in men: what's the diagnosis? Differential diagnoses Guidelines in Practice • Testicular Examination - OSCE Guide - YouTube (mailerlite.com) • Your Privates (independentnurse.co.uk) • Prostate cancer treatment support (independentnurse.co.uk)
The Older Population	<ul style="list-style-type: none"> • BGS • Ageing Better • Delirium Champions - YouTube • Practice Nursing - Understanding skin infections in older adults • NHS England » Non-emergency patient transport services eligibility criteria: Consultation response

Women's Health

- [Womens Health Concern](#)
- [Well Being of Women](#)
- [Coppa Feel](#)
- [Menopause Matters](#)
- [The Menopause Charity](#)
- [Royal College of Obstetricians and Gynaecologists - Guidelines](#)
- [Pelvic Partnership](#)
- [CRUK - Womens Cancer](#)
- [Breast Cancer Now](#)
- [Foundation for Women's Cancer](#)
- [Eve Appeal](#)
- [Ovarian.Org](#)
- [Jo's Trust](#)
- [Well Spring](#)
- [Know your Lemons](#)
- [New best practice recommendations for menopause care published | MIMS online](#)
- [Newson Health - Home](#)
- [Practice Nursing - Managing the side effects of contraception](#)
- [Practice Nursing - Hormone replacement therapy: update and practical prescribing](#)
- [Practice Nursing - Urinary incontinence and pelvic organ prolapse in primary care](#)
- [Pelvic floor dysfunction: key tenets from the new NICE guideline \(mgp.co.uk\)](#)
- [Endometriosis: what nurses need to know and how to help patients \(rcni.com\)](#)
- [Intervene early to lower the risk of endometrial hyperplasia and cancer | Hot topic | Guidelines in Practice](#)
- [Heavy menstrual bleeding: what's the diagnosis? | Differential diagnoses | Guidelines in Practice](#)
- [Breast pain: what's the diagnosis? | Differential diagnoses | Guidelines in Practice](#)
- [HPV vaccine alongside surgery may reduce risk of cervical lesions returning](#)
- [Good continence care: tips for nurses working in any setting \(rcni.com\)](#)
- [British Menopause Society - www.thebms.org.uk](#)
- [NHS - www.nhs.uk/conditions/menopause](#)
- [Henpicked - henpicked.net](#)
- [The Menopause Exchange - www.menopause-exchange.co.uk](#)
- [Women's Health Concerns - www.womens-health-concern.org](#)
- [Menopause Matters - www.menopausematters.co.uk](#)
- [The Daisy Network - www.daisynetwork.org](#)
- [Dr Louise Newson's Menopause Doctor - www.menopausedoctor.co.uk](#)
- [Manage My Menopause - www.managemymenopause.co.uk/menopause-advice](#)
- [Menopause Support - menopausesupport.co.uk](#)

Carers / Social Care / Care Homes	<ul style="list-style-type: none"> • The Care Provider Alliance • Skills for Care • The Care Workers' Charity • Supporting Adult Carers • Read the report (kingsfundmail.org.uk) • Distribution of funding to support the reform of the adult social care charging system in 2023 to 2024 - GOV.UK (www.gov.uk) • Adult social care: people waiting for assessments, care or reviews (kingsfundmail.org.uk) • Guidance and briefings - Care Provider Alliance • Creating caring cultures in health and social care: Getting started (independentnurse.co.uk) • Adult Social Care needs immediate funding injection and long-term plan, says Levelling Up Committee - Committees - UK Parliament • Covid in care homes See Skills For Care's website • Read the DHSC bulletin (dhsc-mail.co.uk) • Read the overview (kingsfundmail.org.uk) • More detail (kingsfundmail.org.uk)
Young Carers	<ul style="list-style-type: none"> • Young carers Action For Children • Young Carers Supporting Young People Who Care (youngcarerscentre.org.uk)
Complex Needs	<ul style="list-style-type: none"> • Training materials for teachers of learners with severe, profound and complex learning difficulties (complexneeds.org.uk) • Complex needs - United Response
Family Planning & Sexual Health	
Family Planning	<ul style="list-style-type: none"> • Faculty of Sexual and Reproductive Healthcare Education and Training • Practice Nursing - Common questions on emergency and postcoital contraception • Practice Nursing - Managing the side effects of contraception • Contraception for women aged over 40: what, when, and for how long Implementing guidelines Guidelines in Practice • CPD module: Intrauterine contraception – what practice nurses need to know - Nursing in PracticeNursing in Practice (cogora.com)

<i>Continuation of Family Planning & Sexual Health</i>	
Reproductive	<ul style="list-style-type: none"> • Tommys
Sexual Health / Sexual Abuse	<ul style="list-style-type: none"> • Sexual and Reproductive Health Profiles • FSRH Education & Training • NICE guideline on reducing STIs NICE guideline Guidelines
Maternity / Neonate health	<ul style="list-style-type: none"> • Wound healing Free Nursing CPD Course Child Health Academy (healthprofessionalacademy.co.uk) • Sharp fall in numbers of pregnant smokers after new NHS drive (independentnurse.co.uk)
<i>Care of Patients with Long Term Conditions</i>	
LTC	<ul style="list-style-type: none"> • Physical Activity for the Prevention and Management of Long-Term Conditions
Diabetes & Pre-Diabetes	<ul style="list-style-type: none"> • Mumoactive • The mySugr App • PCDS Entry level module series - Foot Check • Type 2 diabetes in adults: management • All Independent Nurse - to read the below articles, you will need to register • Diabetic foot pressure ulcer (independentnurse.co.uk) • Sexual Dysfunction and Diabetes (independentnurse.co.uk) • Let's protect our family from needle stick injuries in insulin injections (independentnurse.co.uk) • NHS rolls out second continuous glucose monitoring device to type I diabetes patients (mkt6316.com) • Number one event for diabetes professionals returns (independentnurse.co.uk) • Managing diabetes during Ramadan (independentnurse.co.uk) • Diabetes nurse-led clinic (independentnurse.co.uk) • Insights into diagnosing Type 2 diabetes in primary care (independentnurse.co.uk) • Dementia and pad culture: dignified continence care in hospitals (rcni.com) • Sponsored: NG17 – Type 1 diabetes in adults: diagnosis and management (update) (cogora.com)

Continuation of Long Term Conditions

Respiratory	<ul style="list-style-type: none"> • Spirometry: step by step • ARTP • British Lung Foundation • The Primary Care Respiratory Society • Respiratory – RespiMat® patient resources Boehringer Ingelheim (boehringer-ingelheim.com) • Respiratory News & Advice (nursinginpractice.com) • Dudley pulmonary rehab - Template PI (dgft.nhs.uk) • Chronic cough in adults: what's the diagnosis? (guidelinesinpractice.co.uk) • v Inhaler carbon emissions (mims.co.uk) • Visual guide to respiratory devices: Relievers - long acting + anticholinergics - long acting (mkt6316.com) • Clinical events - Primary Care Respiratory Academy • MERS CoV (Middle East Respiratory Syndrome): Everything you need to know (independentnurse.co.uk) • Spirometry: how to take a lung function test (independentnurse.co.uk) • Vaping → (gpnotebook.com) • tepotinib for treating advanced non-small-cell lung cancer - General Practice notebook (gpnotebook.com)
COPD	<ul style="list-style-type: none"> • Right Breathe • GOLD COPD 2022 strategy Independent professional body guideline Guidelines • Practice Nursing - COPD, exacerbation and self-management: a literature review • Practice Nursing - Diagnosing COPD in general practice • Practice Nursing - Increasing physical activity in people with COPD • Practice Nursing - Monitoring respiratory rate in adults • Combination inhalers for the treatment of COPD (mims.co.uk) • A patient story of living with COPD (independentnurse.co.uk)
Asthma	<ul style="list-style-type: none"> • Asthma UK • Asthma: diagnosis, monitoring and chronic asthma management • Global Initiative for Asthma • British guideline on the diagnosis and pharmacological management of asthma in children • Advising patients on physical activity and asthma (independentnurse.co.uk) • Asthma: Inhaler techniques (independentnurse.co.uk) • Sponsored module: Asthma emergencies: simple steps save lives (cogora.com) • World Asthma Day - signs and symptoms of asthma - YouTube • Health Advice - Asthma

Continuation of Long Term Conditions

Hypertension	<ul style="list-style-type: none"> • British Heart Foundation • Blood Pressure UK • Hypertension in adults: diagnosis and management • Hypertension in adults: diagnosis and treatment • Hypertension: symptoms to look out for and treatment options (rcni.com)
CVD/AF	<ul style="list-style-type: none"> • QRISK®3-2018 risk calculator • Heart Rhythm Alliance • CVD risk assessment and management • NHS lipid management pathway NHS guideline Guidelines • Blog NB Medical (cmail19.com) • Access the toolkit (kingsfundmail.org.uk) • Sex-specific temporal trends in the incidence and prevalence of cardiovascular disease in young adults: a population-based study using UK primary care data (oup.com) • Proteomics for the prediction and prevention of atherosclerotic disease • False Utopia of One Unifying Description of the Vulnerable Atherosclerotic Plaque: A Call for Recalibration That Appreciates the Diversity of Mechanisms Leading to Atherosclerotic Disease (nih.gov) • Impact of diet on ten-year absolute cardiovascular risk in a prospective cohort of 94 321 individuals: A tool for implementation of healthy diets (nih.gov) • Statin Eligibility for Primary Prevention of Cardiovascular Disease According to 2021 European Prevention Guidelines Compared With Other International Guidelines (jamanetwork.com) • Resources - Benecol HCP - UK • Saving Brains Thrombectomy Report July 2022 • How big a problem is heart disease in the UK? (independentnurse.co.uk) • adding salt to foods and hazard of premature mortality - General Practice notebook (gpnotebook.com) • The distribution of doctor quality evidence from cardiologists in England
Heart Failure	<ul style="list-style-type: none"> • British Heart Foundation • British Society Guidelines • Practice Nursing - Understanding the pharmacology of heart failure • Understanding heart failure with preserved ejection fraction (independentnurse.co.uk)

Continuation of Long Term Conditions

Cancer / Oncology	<ul style="list-style-type: none"> • Surviving Thyroid Cancer • Help Us Help You - Lung Cancer Symptoms • Breast Cancer Now • Macmillian • Bowel Cancer UK • Brain Trust • CRUK • Action Cancer • Foundation for Women's Cancer • NHS England » Cancer • View webcast now (chronicconditions.co.uk) • NHS England » NHS launches awareness campaign for England's most deadly cancer • Government rejects MPs' warning on early cancer diagnosis - Committees - UK Parliament • Intervene early to lower the risk of endometrial hyperplasia and cancer Hot topic Guidelines in Practice • View webcast now (chronicconditions.co.uk) • NHS England » NHS launches awareness campaign for England's most deadly cancer • CPD module: Bowel cancer risks, identification and management (cogora.com) • Prostate cancer treatment support (independentnurse.co.uk) • Bowel Cancer Bowel Cancer UK • tepotinib for treating advanced non-small-cell lung cancer - General Practice notebook (gpnotebook.com)
Chronic Kidney Disease	<ul style="list-style-type: none"> • Kidney.Org • Kidney Quality Improvement Partnership
Liver Disease	<ul style="list-style-type: none"> • British Liver Trust • Liver Research • BRITISH ASSOCIATION FOR THE STUDY OF THE LIVER • LIVERnORTH • LIVER DISEASE AND CIRRHOSIS

Continuation of Long Term Conditions

Blood Disorders	<ul style="list-style-type: none"> • Blood Cancer UK • UK Thalassaemia Society • The ITP Support Association • UK-ITP Paediatric ITP Registry • The Haemophilia Society • UK MDS Forum • Pernicious Anaemia Society • Haemochromatosis UK • Practice Nursing - Understanding vitamin B12 and folate deficiency • Practice Nursing - Anaemia in primary care: iron deficiency and anaemia of chronic disease
G.I	<ul style="list-style-type: none"> • GIST Cancer UK • Pernicious Anaemia Society • Practice Nursing - Understanding constipation in adults • Management of Inflammatory Bowel Disease - Sponsored by Tillotts (independentnurse.co.uk)
ENT	<ul style="list-style-type: none"> • Practice Nursing - Managing otalgia in general practice
G.U	<ul style="list-style-type: none"> • Supporting intermittent self-catheterisation in challenging circumstances (mah-communications.co.uk) • Practice Nursing - Urinary incontinence and pelvic organ prolapse in primary care
ME / CFS / Fibromyalgia	<ul style="list-style-type: none"> • ME Association • ME Research • Action for M.E • Fibromyalgia Action UK • Fibromyalgia UK • Home - Fibromyalgia Awareness UK (fibroawarenessuk.org) • Fibromyalgia - Symptoms, diagnosis and treatment BMJ Best Practice • Fibromyalgia - The Brain Charity

Continuation of Long Term Conditions

Neurological Conditions	<ul style="list-style-type: none"> • The Brain Tumour Charity • Narcolepsy.Org • ACNR • MS Society UK Information, research and support Multiple Sclerosis Society UK • Home MS Trust • Epilepsy Society • NICE multiple sclerosis guideline NICE guideline Guidelines • Education Resources (rosemontpharma.com) • Dysphagia and Parkinson's disease (independentnurse.co.uk)
Musculoskeletal Conditions	<ul style="list-style-type: none"> • Rheumatology • National Axial Spondyloarthritis Society • Musculoskeletal health • Musculoskeletal health: 5 year prevention strategic framework • Faculty of Occupational Medicine • Guide to embedding your first contact physiotherapy service
Endocrine Disorders / Metabolic Disorders	<ul style="list-style-type: none"> • Society for Endocrinology • Turner Syndrome Support Society • Thyroid Eye Disease • British Thyroid Foundation • Thyroid UK • The Pituitary Foundation • Addisons Disease • Parathyroid UK • The Royal Osteoporosis Society • Metabolic Support UK
Frailty	<ul style="list-style-type: none"> • Recognising frailty • Identifying frailty • CLINICAL FRAILTY SCALE • Practice Nursing - Dysphagia in the older person: an update • Practice Nursing - Preventing skin tears among older adults in general practice • Assessment of frailty in Alzheimer's: a literature review

Continuation of Long Term Conditions

Dementia / Alzheimers	<ul style="list-style-type: none"> • Dementia UK • Age UK - Understanding Dementia • Delirium Champions • Alzheimers Society • Common viruses may trigger Alzheimer's disease - Nursing in Practice Nursing in Practice (cogora.com) • Practice Nursing - Recognition and assessment of dementia in primary care • Practice Nursing - Assessment of frailty in Alzheimer's: a literature review • Community Care Model for Dementia: North East London NHS Foundation Trust (independentnurse.co.uk) • You will need to register to view this page: Remaining independent with Alzheimer's disease (independentnurse.co.uk)
Allergy / Auto-immune / Genetic Conditions	<ul style="list-style-type: none"> • Allergy UK • British Society for Rheumatology • Addisons Disease • Practice Nursing - Clinical
Obesity	<ul style="list-style-type: none"> • Obesity UK • Implementing the Guidelines algorithm on managing obesity in primary care (guidelinesinpractice.co.uk) • Junk food advertising ban on public transport linked to a reduction in obesity (cogora.com) • Practice Nursing - Understanding bariatric surgery to support patients in primary care
Pain Management	<ul style="list-style-type: none"> • Pain Concern • UK career framework for pain nurses • Access to pain management from a legal and human rights perspective (rcni.com)
Genomics	<ul style="list-style-type: none"> • Regulatory Horizons Council report on genetic technologies - GOV.UK (www.gov.uk)
Multi-Morbidity	<ul style="list-style-type: none"> • Multimorbidity • Multimorbidity / multiple long-term conditions (MLTC)
Other / Case Studies	<ul style="list-style-type: none"> • Heatwave: how to cope in hot weather - NHS (www.nhs.uk) • Ep 49 – Heat exhaustion and heatstroke - GPnotebook Podcast • Supporting vulnerable people before and during a heatwave: for health and social care professionals - GOV.UK • More than 740 million people have tinnitus worldwide, study finds (cogora.com) • How to stay safe in the hot weather - with nurse Angela Tranter

Continuation of Long Term Conditions

Dermatology

- [British Association of Dermatologists](#)
- [Eczema](#)
- [The British Skin Foundation](#)
- [Acne vulgaris: management](#)
- [The Primary Care Dermatology Society](#)
- [Acne.org](#)
- [Allergy UK](#)
- [Urticaria](#)
- [Hives](#)
- [Sunburn](#)
- [Causes of cancer and reducing your risk](#)
- [What is Rosacea?](#)
- [Rosecea](#)
- [The Rosacea Forum](#)
- [Herpes Viruses Association](#)
- [Shingles](#)
- [Fungal Skin Infection - Foot](#)
- [The Psoriasis Association](#)
- [National Psoriasis Foundation](#)
- [Melanoma](#)
- [Skin Health Information](#)
- [British Association of Plastic Reconstructive and Aesthetic Surgeons - Procedure Guides](#)
- [Warts and verrucae](#)
- [Practice Nursing - Fungal skin infections](#)
- [Practice Nursing - Dermatology prescribing update: eczema](#)
- [Practice Nursing - Understanding skin infections in older adults](#)
- [Skin lesions: what's the diagnosis? \(guidelinesinpractice.co.uk\)](#)
- [Implementing the NICE guideline on the management of acne vulgaris \(guidelinesinpractice.co.uk\)](#)
- [Rosacea: newer treatments can avoid antibiotics \(guidelinesinpractice.co.uk\)](#)
- [KISS Summary - Topical Corticosteroid Withdrawal \(cmail20.com\)](#)
- [New topical retinoid for acne \(mkt6316.com\)](#)
- [EXCESS SWEATING \(HYPERHIDROSIS\) ORAL TREATMENT IS AVAILABLE. \(Contains promotional material\) \(mgp.co.uk\)](#)
[Please register to read these pages:](#)
- [How to Treat Fungal Infections \(independentnurse.co.uk\)](#)
- [Dermatology update for primary care \(independentnurse.co.uk\)](#)

Continuation of Long Term Conditions

Minor Illness / First Contact
Assessment / OSCE

- [Fact Sheets - Self Care Forum](#)
- [OSCE Checklists !\[\]\(31b03e46ee8a80a1f1467b8c03bd76e8_img.jpg\) \(mlsend.com\)](#)
- [OSCE Flashcards !\[\]\(7d9665ff04f9d2270c38081c6215a724_img.jpg\) \(mlsend.com\)](#)
- [600+ OSCE Stations !\[\]\(7cea648fec4dfc1e99934873e9173b69_img.jpg\) \(mlsend.com\)](#)
- [Anatomy Flashcards !\[\]\(48ceb66414885cacc3f139b4fa359213_img.jpg\) \(mlsend.com\)](#)
- [Facial rashes: what's the diagnosis? | Differential diagnoses | Guidelines in Practice](#)
- [Bites and stings: when to prescribe an antibiotic \(guidelinesinpractice.co.uk\)](#)
- [Rashes in children: what's the diagnosis? | Differential diagnoses | Guidelines in Practice](#)
- [Skin lesions: what's the diagnosis? | Differential diagnoses | Guidelines in Practice](#)
- [Rosacea: newer treatments can avoid antibiotics \(guidelinesinpractice.co.uk\)](#)
- [Lower urinary tract symptoms in men: what's the diagnosis? | Differential diagnoses | Guidelines in Practice](#)
- [Change in bowel habit: what's the diagnosis? | Differential diagnoses | Guidelines in Practice](#)
- [Unintended weight loss: what's the diagnosis? \(guidelinesinpractice.co.uk\)](#)
- [Skin lesions: what's the diagnosis? \(guidelinesinpractice.co.uk\)](#)
- [Breast pain: what's the diagnosis? | Differential diagnoses | Guidelines in Practice](#)
- [Rashes in children: what's the diagnosis? | Differential diagnoses | Guidelines in Practice](#)
- [Red eye: what's the diagnosis? \(guidelinesinpractice.co.uk\)](#)
- [Chronic cough in adults: what's the diagnosis? \(guidelinesinpractice.co.uk\)](#)
- [Low back pain: what's the diagnosis? | Differential diagnoses | Guidelines in Practice](#)
- [Testicular Examination - OSCE Guide - YouTube \(mailerlite.com\)](#)
- [CPD module: Managing common eye conditions - Nursing in PracticeNursing in Practice \(cogora.com\)](#)
- [Acromegaly Examination OSCE Guide](#)
- [Visual Acuity Assessment OSCE Guide](#)
- [Anterior Segment Examination OSCE Guide](#)
- [An Introduction to the Arlight](#)
- [How to Treat Fungal Infections \(independentnurse.co.uk\)](#)

End of Life Care	
End of Life Care	<ul style="list-style-type: none"> • ReSPECT for healthcare professionals • Hospice UK • Palliative and End of Life Care Profiles - OHID (dhsc-mail.co.uk) • NHS England » Palliative and end of life care: Statutory guidance for integrated care boards (ICBs) • Dying Matters
Covid-19 / Monkeypox	
Covid-19	<ul style="list-style-type: none"> • Covid Live • Government's disregard for public health and health inequalities made the pandemic worse, says BMA in final two Covid review reports - BMA media centre - BMA • Coronavirus (COVID-19) Infection Survey, UK: 5 August 2022 • National flu and COVID-19 surveillance reports: 2022 to 2023 season • Coronavirus Data - What's new? • The R value and growth rate
Long Covid	<ul style="list-style-type: none"> • Supporting your recovery after COVID-19 • Long Covid Toolkit • Long term effects of COVID (Long COVID) • Post-COVID Syndrome (Long COVID) • COVID-19 Yorkshire Rehabilitation Screening Tool • FOM Guidance • One in eight develop long Covid symptoms after infection, study shows (cogora.com) • Long term effects of coronavirus - BSL (with subtitles) • long covid - General Practice notebook (gpnotebook.com)
Monkeypox	<ul style="list-style-type: none"> • More than 2500 cases of monkeypox reported in the UK (independentnurse.co.uk) • Monkeypox: case definitions • Monkeypox cases confirmed in England – latest updates

News & Views

<p>Digital News / Remote Consultations</p>	<ul style="list-style-type: none"> • Digital Health News Webinars • Digital Health News • NHS Digital • DigiHealthWell • Public Sector Events, Conferences and Training - Inside Government • Digital Transformation • v Digital Health Digest (kingsfundmail.org.uk) • What's gone wrong at the NHS AI lab?, HSJ (£), 27 July 2022 • Shrinking NHS England issues £9m contract for digital 'delivery partner', HSJ (£), 27 July 2022 • NHS Digital runs wireless tech trials to improve health and care services, Healthcare IT News, 28 July 2022 • NHS England launches remote monitoring initiative for heart failure, Digital Health, 1 August 2022 • NHS to roll out life-changing glucose monitors to all Type 1 diabetes patients, NHS England, 2 August 2022 • Heart check app keeps patients out of hospital, The Times (£), 4 August 2022 • Two midlands NHS trusts end partnerships with Babylon, Digital Health, 4 August 2022 • NHS 111 suffers major cyber attack as staff resort to 'pens and paper', The Telegraph, 5 August 2022 • NHS is STILL using 800 fax machines despite government vowing to phase them out almost four years ago, Daily Mail, 7 August 2022 • Chaos after heat crashes computers at leading London hospitals, The Observer, 7 August 2022 • Your daily news updates from Digital Health (campaign-archive.com) • [WEBINAR] Levelling up on infrastructure - essential to deliver improved healthcare outcomes (mailchi.mp) • Digital Health Conference Brought To You By HETT Show
<p>PSNC News / Pharmacy</p>	<ul style="list-style-type: none"> • National Pharmacy Association • Royal Pharmaceutical Society • Medicines Learning Portal • Specialist Pharmacy Service • PSNC Newsletter: 8th August (mailchi.mp) • Digital Health Networks Newsletter: 8 August 2022 (mailchi.mp) • PSNC Newsletter: 10th August (mailchi.mp)
<p>Pulse / GP Online / HSJ / NB Medical</p>	<ul style="list-style-type: none"> • GP Online • HSJ • Pulse Today
<p>Primary Care Update / PCC / PPP</p>	<ul style="list-style-type: none"> • Public Policy Projects News • Primary Care Bulletin

Continuation of News & Views

Health Care Leaders Newsletters	
Kings Fund	<ul style="list-style-type: none"> • The Kings Fund • v Health Management and Policy Alert: 12 August 2022 (kingsfundmail.org.uk) • Statistics » A&E Attendances and Emergency Admissions (kingsfundmail.org.uk) • Adult social care monthly statistics, England: August 2022 - GOV.UK (kingsfundmail.org.uk) • Statistics » Ambulance Quality Indicators Data 2022-23 (kingsfundmail.org.uk) • Statistics » Consultant-led Referral to Treatment Waiting Times Data 2022-23 (kingsfundmail.org.uk) • Coronavirus (Covid-19) Infection Survey, antibody and vaccination data, UK: 10 August 2022 (kingsfundmail.org.uk) • Mental Capacity Act 2005, Deprivation of Liberty Safeguards, 2021-22, NHS Digital (kingsfundmail.org.uk) • NHS e-referral service open data, October 2019 to July 2022 (kingsfundmail.org.uk) • Out of area placements in mental health services, May 2022 (kingsfundmail.org.uk) • Provisional monthly hospital episode statistics for admitted patient care, outpatient and accident and emergency data, April 2022 to June 2022 (kingsfundmail.org.uk) • Psychological Therapies: reports on the use of IAPT services, England, May 2022 Final including a report on the IAPT Employment Advisers pilot - NHS Digital (kingsfundmail.org.uk)
World Health Organisation	<ul style="list-style-type: none"> • WHO • OpenWHO
IHCT / CCG / STP / Healthier Futures	<ul style="list-style-type: none"> • Black Country & West Birmingham CCG • Dudley Integrated Health and Care • Home :: Black Country Healthcare NHS Foundation Trust • Staff News • Newsletters :: Black Country ICS
NHSI / NHSE	
University / Student Nurses	

Continuation of News & Views

<p>Medisa / Univadis / Geeky Medics / GP Notebook / Medscape</p>	<ul style="list-style-type: none"> • Medisa • Geeky Medics • Medscape Nurses • GP Notebook • Create OSCE Stations for Free & Brilliant New Podcast Episodes! (mailerlite.com)
<p>Nurse Guidelines</p>	<ul style="list-style-type: none"> • Guidelines in Practice – supporting implementation of best practice
<p>The Health Foundation</p>	<ul style="list-style-type: none"> • The Health Foundation • Newsletter: Taking action to build good health (healthfdn.org.uk)
<p>The Health Care Leaders Update</p>	<ul style="list-style-type: none"> • Health Care Leader News
<p>Practice Index</p>	
<p>RCN</p>	<ul style="list-style-type: none"> • RCN • v Petition urges Government to rethink scrapping NHS COVID sick pay (rcni.com) • How to avoid medication errors – and what to do if you make one (rcni.com) • Missing nursing student: fifth arrest, police make fresh appeal (rcni.com) • Acting up pay for nurses: should you be getting more money? (rcni.com) • Metastatic spinal cord compression: a poster and mnemonic supporting acute hospital staff to deliver optimal patient care (rcni.com) • Supporting children's nurses to deliver trauma-informed care (rcni.com) • RCN urges members to support strike action in September ballot (cogora.com) • Nurses urged to vote for first strike in England and Wales amid pay row (rcni.com) • RCN members urged to support industrial action in strike ballot over NHS pay (independentnurse.co.uk) • Candidates for RCN President election announced (independentnurse.co.uk) • Outrage as PM hopeful suggests ending national pay deals (independentnurse.co.uk) • Read Pat's view (rcn.org.uk) • Hear from Denise (rcn.org.uk) • How you can have your say (rcn.org.uk) • Read the handbook (rcn.org.uk) • Hear their stories (rcn.org.uk)

Continuation of News & Views

Innovation Agency	<ul style="list-style-type: none"> • Innovation Agency Exchange
Nursing in Practice / Nursing Standard / Independent Nurse	<ul style="list-style-type: none"> • Nursing Times • Practice Nursing - Explore our brand new website • Journal of General Practice Nursing • Independent Nurse • GPN Bulletin • Nursing in Practice launches mobile app - Nursing in Practice • Nursing in Practice Clinical Bulletin • Nursing in Practice Bulletin
QNI	<ul style="list-style-type: none"> • QNI • Talk To Us © – The Queen's Nursing Institute (qni.org.uk) • Do more to promote community nursing career for students, say QNI (rcni.com)
NMC	<ul style="list-style-type: none"> • NMC • New post-registration standards published; consultation on education standards (news-nmc.org.uk)
CMO / CNO	
Nice	<ul style="list-style-type: none"> • NICE • REMINDER: NICE News for Health and Social Care July 2022 (mailchi.mp)
RCGP / BMA / The Lancet	<ul style="list-style-type: none"> • The Lancet • British Medical Journal • Royal College of General Practitioners
Midlands Academic Health Science Network	<ul style="list-style-type: none"> • WMAHSN Network
Healthwatch	<ul style="list-style-type: none"> • Healthwatch
Other	<ul style="list-style-type: none"> • Patients Association • UCLPartners Proactive Care Frameworks - Promoting CVD Prevention (mailchi.mp)

Free Training / Webinars / Meetings / CPD

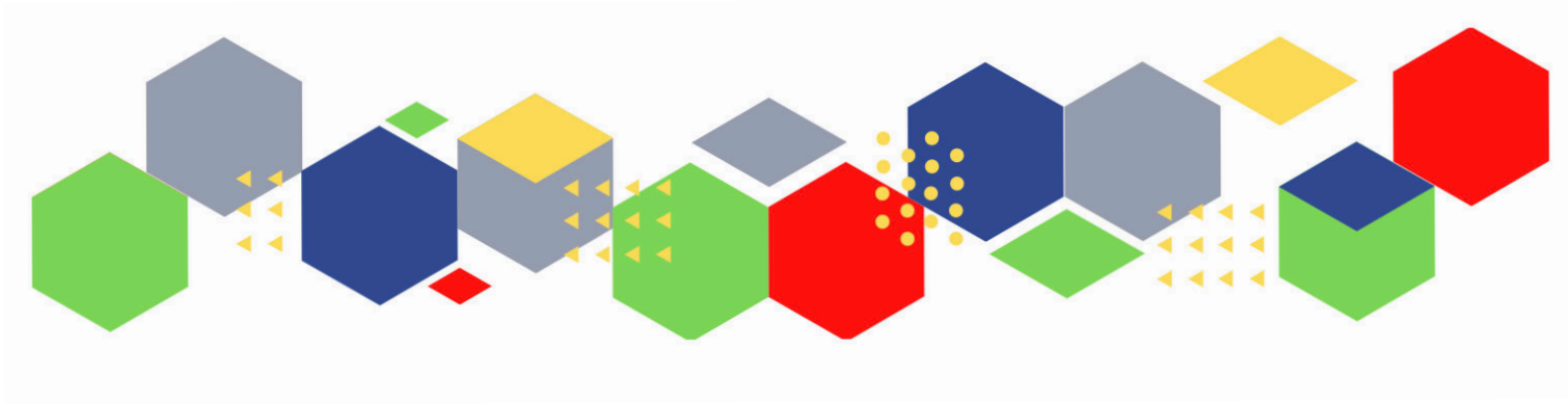
Development / Information and Knowledge	<ul style="list-style-type: none"> • Red Whale Training • Issues & Answers • Issues & Answers - Long Covid Broadcasts • Nursing Events • Best Practice Show 12 - 13 October 2022 • Home (eventscloud.com) • Infant Allergy Registration now open (mahealthcareevents.co.uk) • Clinical events - Primary Care Respiratory Academy • Nursing Conference 2022 28th & 29th September Online (nursingstrategy.co.uk) • PCN Study Day 2022 - Immunisation Update (mahealthcareevents.co.uk) • (2) Part Two - Leg Ulcer Series: Interim Care - Progressing towards self-care Facebook • JCN Study Day Blackpool 2022 - Journal of Community Nursing • JCN Study Day Bradford - Journal of Community Nursing • Part Three - Leg Ulcer Series: Embracing supported self-care (facebook.com) • JCN Study Day Esher - Journal of Community Nursing • Immunisation (independentnurse.co.uk) • JCN Study Day Durham 2022 - Journal of Community Nursing • Nursing in Practice - VIRTUAL Calendar 2022 - Nursing In Practice Events Nursing In Practice Events (nursinginpractice-events.co.uk) • The Modern Management of Diabetes • REGISTER HERE for PART 2 – Heart Failure (e-shot.net)
Free to RCN	<ul style="list-style-type: none"> • RCNi events RCNi
MIMMs Learning	
Future Proof Health Training	<ul style="list-style-type: none"> • News & Events
BCWB Training Hub	<ul style="list-style-type: none"> • Training & Development Opportunities (sharepoint.com)
Evidence based care	

Continuation of Free Training / Webinars / Meetings / CPD

Eventbrite	<ul style="list-style-type: none"> • Transgender Webinar Tickets
e-Learning for Health	
YouTube	<ul style="list-style-type: none"> • NHS England • Black Country Healthcare - YouTube
Area Bulletins	
Blogs/Vlogs	<ul style="list-style-type: none"> • Read the blog (kingsfundmail.org.uk) • Racism in the NHS is rampant: nurses demand action (independentnurse.co.uk) • Archie Battersbee and the limits of law (independentnurse.co.uk) • The last generation of smokers (independentnurse.co.uk) • The impact of the About Me standard on the health and care system – PRSB (theprsb.org) • Staying safe in extreme heat - UK Health Security Agency (blog.gov.uk) • Working towards a healthy Commonwealth Games - UK Health Security Agency (blog.gov.uk) • COVID-19: the future of UKHSA surveillance - UK Health Security Agency (blog.gov.uk) • The COVID-19 Dashboard Moves to Weekly Updates - UK Security Agency (blog.gov.uk) • Staying Safe During Summer - UK Health Security Agency (blog.gov.uk) • The SIREN study: Two years on - UK Health Security Agency (blog.gov.uk) • Clean Air Day – how UKHSA is tackling air pollution, and how you can help - UK Health Security Agency (blog.gov.uk) • Information on monkeypox and our investigation into recent cases - UK Health Security Agency (blog.gov.uk) • A voice to lead: International Nurses Day 2022 - UK Health Security Agency (blog.gov.uk) • An increase in Hepatitis Cases in Children - UK Health Security Agency (blog.gov.uk) • UKHSA'S weekly surveillance report: focusing on 'Pillar 1' data - UK Health Security Agency (blog.gov.uk) • What is Lyme disease, and why do we need to be tick aware? - UK Health Security Agency (blog.gov.uk) • What to do if you have symptoms of a respiratory infection including COVID-19, or a positive COVID-19 test - UK Health Security Agency (blog.gov.uk) • NHS England » Managing Heart Failure @home: An opportunity for excellence

Continuation of Free Training / Webinars / Meetings / CPD

Podcasts	<ul style="list-style-type: none"> • The Nursing Handover Podcast • Nursing Standard Podcasts • Nursing Matters • Welcome to the BJN Podcast • Cygnet Health Care Podcast • EBN podcast • This Is Nursing • Teach me, I'm a Nurse • Past Caring • RCGP eLearning podcast • The BMJ Podcast • Primary Care Network podcasts • The Professional Support Unit's Pandemic Podcast • The Next GenCast
Research	<ul style="list-style-type: none"> • Science Daily • Multimorbidity / multiple long-term conditions (MLTC) • National Institute for Health and Care Research • Research England £8 billion investment in England's universities – UKRI
Freebies	<ul style="list-style-type: none"> • Blue Light Card
Other	



Thank you for reading Future Proof Health's weekly news!

If you missed past issues, please click [here](#) to view them

More information can be found on our website, [here](#)

Don't forget to like us on [Facebook](#) & Follow us on [Twitter](#)

