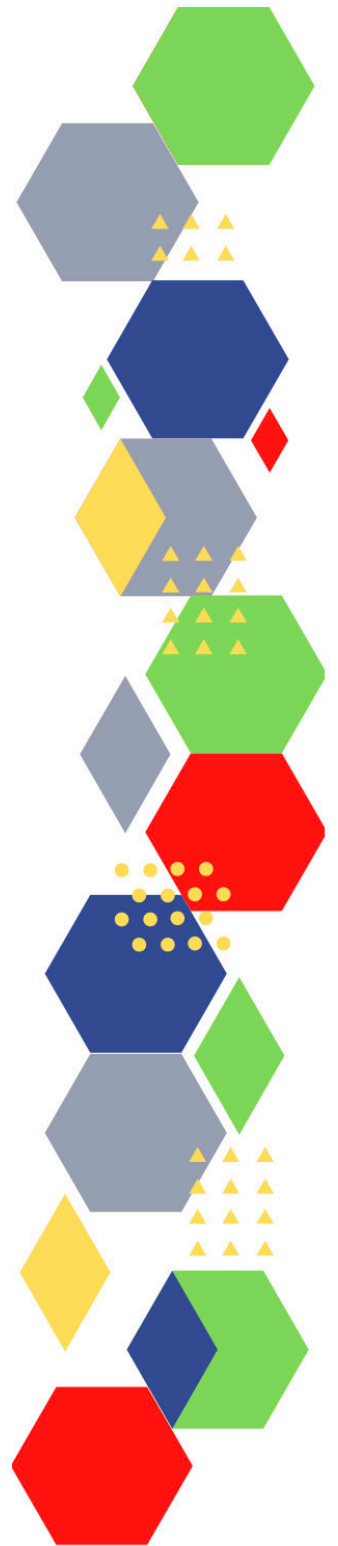




Future Proof Health Presents

Weekly News

26th May 2022



| Communication  |  |
|--|--|
| Communication with Patients  |  |
| Communication within Teams   |  |
| Consent  | <ul style="list-style-type: none"> <li>• <a href="#">Gillick competency and Fraser guidelines</a></li> <li>• <a href="#">CONSENT POLICY</a></li> <li>• <a href="#">ReSPECT for healthcare professionals</a></li> </ul>   |
| People and Personal Development  |  |
| Personal / People Development / Leadership   | <ul style="list-style-type: none"> <li>• <a href="#">Accountability and delegation in practice</a></li> </ul>  |
| NHS Employers / HR / NHS Pension   | <ul style="list-style-type: none"> <li>• <a href="#">NHS Employers</a></li> <li>• <a href="#">Pensions Online</a></li> </ul>   |
| Health, Safety & Security  |  |
| <ul style="list-style-type: none"> <li>• <a href="#">NPSA</a></li> <li>• <a href="#">Control of Substances Hazardous to Health (COSHH)</a></li> <li>• <a href="#">HSE Weekly Digest eBulletin</a></li> </ul> |  |
| Gov UK - NHS   | <ul style="list-style-type: none"> <li>• <a href="#">New Deputy Chief Medical Officer for England announced - GOV.UK (www.gov.uk)</a></li> </ul>   |
| CQC  | <ul style="list-style-type: none"> <li>• <a href="#">GP mythbusters</a></li> <li>• <a href="#">Examples of outstanding practice for GPs</a></li> <li>• <a href="#">CQC's upgraded website is now live (govdelivery.com)</a></li> <li>• <a href="#">News Adult Social Care Providers</a></li> </ul> |
| MIMS   | <ul style="list-style-type: none"> <li>• <a href="#">Prescribing Update</a></li> </ul>   |
| Antibiotic steward-ship / Anti-microbial resistance  |  |
| Drug / Device Alerts (MHRA)  |  |

|  |  |
|--|--|
| Emergency Situations                     | <ul style="list-style-type: none"> <li>• <a href="#">The updated National Early Warning Score and its use with suspected Sepsis</a></li> <li>• <a href="#">Resuscitation Council UK</a></li> </ul>   |
| Vaccines / Medications / Prescribing     | <ul style="list-style-type: none"> <li>• <a href="#">Protocol for ordering, storing and handling vaccines</a></li> <li>• <a href="#">A Competency Framework for all Prescribers</a></li> <li>• <a href="#">Non-medical prescribing</a></li> <li>• <a href="#">The Human Medicines Regulations 2012</a></li> <li>• <a href="#">RCN - Non-medical prescribers</a></li> <li>• <a href="#">Royal Pharmaceutical Society</a></li> <li>• <a href="#">Standards for prescribing</a></li> <li>• <a href="#">Clinical Negligence Scheme for General Practice</a></li> </ul> |
| Infection Control / Infection Statics    | <ul style="list-style-type: none"> <li>• <a href="#">How to reduce glove use   RCN Magazines   Royal College of Nursing</a></li> </ul>   |
| Safe Guarding                            | <ul style="list-style-type: none"> <li>• <a href="#">Female genital mutilation (FGM)</a></li> <li>• <a href="#">PREVENT</a></li> <li>• <a href="#">Child protection system in the UK</a></li> <li>• <a href="#">Safeguarding Adults</a></li> <li>• <a href="#">Safeguarding children: detailed information</a></li> </ul>  |
| Practice Policies                        |  |
| Audit                                    |  |
| Information Governance / Record Keeping  | <ul style="list-style-type: none"> <li>• <a href="#">Guide to Data Protection</a></li> <li>• <a href="#">Supporting general practice – Medical record keeping</a></li> </ul>   |
| <b>Quality &amp; Service Improvement</b> |  |
| Quality, Service & Improvement           | <ul style="list-style-type: none"> <li>• <a href="#">The PRSB</a></li> <li>• <a href="#">General Practice Assessment Questionnaire (GPAQ)</a></li> <li>• <a href="#">Healthwatch</a></li> <li>• <a href="#">NHS Five Year Forward View</a></li> <li>• <a href="#">General Practice Forward View</a></li> <li>• <a href="#">NMC</a></li> <li>• <a href="#">Dr Jon Griffiths</a></li> <li>• <a href="#">NHS Confed</a></li> <li>• <a href="#">NHS England » Implementing patient initiated follow-up: guidance for local health and care systems</a></li> </ul>      |

|                                 |   |
|---------------------------------|---|
| Roles in General Practice       | <ul style="list-style-type: none"> <li>• <a href="#">Standards for nursing associates</a></li> <li>• <a href="#">GP mythbuster 57: Health Care Assistants in General Practice</a></li> <li>• <a href="#">We are Primary Care on Twitter: "This #InternationalNursesDay, trainee nursing associate, @LynseyMitchel12, tells us why it's never too late to start a career in #PrimaryCare #nursing. 🧑🏻 Find out more ➡️ <a href="https://t.co/MhHff6iFqv">https://t.co/MhHff6iFqv</a> #GPN #NursingAssociate @FrimleyHC <a href="https://t.co/8dy2s8dnSV">https://t.co/8dy2s8dnSV</a>" / Twitter</a></li> </ul>   |
| Revalidation                    | <ul style="list-style-type: none"> <li>• <a href="#">Enabling Professionalism in Nursing and Midwifery   NIPEC (hscni.net)</a></li> </ul>   |
| Personal Practice & Development |   |
| Practice Management             | <ul style="list-style-type: none"> <li>• <a href="#">Institute of General Practice Management</a></li> <li>• <a href="#">Practice Index</a></li> <li>• <a href="#">Improving the National Workforce Reporting Service (NWRS) - NHS Digital</a></li> </ul>   |
| Employment                      |   |
| NHS Self Care & Resilience      | <ul style="list-style-type: none"> <li>• <a href="#">Samaritans</a></li> <li>• <a href="#">Mental Health at work</a></li> <li>• <a href="#">Calm</a></li> <li>• <a href="#">Supporting our NHS people</a></li> <li>• <a href="#">The Hub :: Black Country Healthcare NHS Foundation Trust</a></li> <li>• <a href="#">NHS England » Looking after you too</a></li> <li>• <a href="#">Time to Look After Yourself - Why Self-Care is Essential and Not Selfish Tickets, Mon 13 Jun 2022 at 13:00   Eventbrite</a></li> <li>• <a href="#">Time to Look After Yourself - Why Self-Care is Essential and Not Selfish Tickets, Tue 21 Jun 2022 at 18:00   Eventbrite</a></li> </ul> |
| Practice Transformation         |   |

|  |  |
|--|--|
| Future of NHS / General Practice                                     | <ul style="list-style-type: none"> <li>• <a href="#">Adding value: a strategic vision for volunteering in NHS trusts   The King's Fund (kingsfund.org.uk)</a></li> <li>• <a href="#">NHS England » Investment in General Practice in England, 2016/17 to 2020/21</a></li> <li>• <a href="#">My Planned Care NHS</a></li> <li>• <a href="#">NHS England » Further drop in number of people facing longest waits for NHS care</a></li> <li>• <a href="#">Government on track to deliver 26,000 more primary care staff - GOV.UK (www.gov.uk)</a></li> <li>• <a href="#">NHS finance</a></li> </ul> |
| ICS / PCN  | <ul style="list-style-type: none"> <li>• <a href="#">NHS England » Integrated Care Systems: Guidance</a></li> <li>• <a href="#">Devolve to evolve? - Policy Exchange</a></li> </ul>  |
| QOF / PHOF / DES / LES / NHS Contract / CQRS / CQUIN                 |  |
| Leadership   | <ul style="list-style-type: none"> <li>• <a href="#">Leadership Academy</a></li> </ul>   |
| Personalised Care  |  |
| Personalised Care / Self Care / Social Prescribing / Health Coaching | <ul style="list-style-type: none"> <li>• <a href="#">Self Care forum</a></li> <li>• <a href="#">Personalised Care Institute</a></li> <li>• <a href="#">Personalised care</a></li> <li>• <a href="#">Social Prescribing Academy</a></li> <li>• <a href="#">Link workers for population health   The King's Fund (kingsfund.org.uk)</a></li> </ul>   |
| Group consultation   |  |
| Working Differently  |  |
| Shared Decision Making   |  |
| Equality & Diversity   |  |
| Equality & Diversity   | <ul style="list-style-type: none"> <li>• <a href="#">Public Health Profiles</a></li> </ul>   |
| Inclusion Health   | <ul style="list-style-type: none"> <li>• <a href="#">Health Creation Academic Network</a></li> </ul>   |
| Poverty / Homelessness   | <ul style="list-style-type: none"> <li>• <a href="#">Crisis</a></li> <li>• <a href="#">This is Poverty</a></li> </ul>  |

| <i>Continuation of Equality &amp; Diversity</i> |  |
|---|--|
| Population Health / Health Communities          |  |
| Thrive Into Work                                | <ul style="list-style-type: none"> <li>• <a href="#">Thrive into Work</a></li> <li>• <a href="#">Thrive into Work Referral form</a></li> </ul>   |
| Health Inequalities                             |  |
| Trans / Non-binary Health / LGBTQ+              | <ul style="list-style-type: none"> <li>• <a href="#">LGBT Foundation</a></li> <li>• <a href="#">NHS population screening: information for trans and non-binary people</a></li> <li>• <a href="#">Cervical screening for trans men and/or non-binary people</a></li> </ul>  |
| Migrant / Refugee Health                        | <ul style="list-style-type: none"> <li>• <a href="#">THE REFUGEE &amp; MIGRANT CENTRE</a></li> </ul>   |
| Traveller / Gypsy / Romany Health               |  |
| Veterans Health                                 | <ul style="list-style-type: none"> <li>• <a href="#">The first call for help takes courage</a></li> </ul>  |
| <i>Management of Emergency Situations</i>       |  |
| Management of Emergency Situations              | <ul style="list-style-type: none"> <li>• <a href="#">The updated National Early Warning Score and its use with suspected Sepsis</a></li> </ul>   |
| 111   |  |
| First Contact                                   | <ul style="list-style-type: none"> <li>• <a href="#">Supporting general practice – Common pitfalls</a></li> </ul>  |
| Red Flags                                       |  |
| Sepsis  | <ul style="list-style-type: none"> <li>• <a href="#">Sepsis: recognition, diagnosis and early management</a></li> <li>• <a href="#">Sepsis guidance implementation advice for adults</a></li> <li>• <a href="#">Sepsis in Children</a></li> <li>• <a href="#">Sepsis Trust</a></li> <li>• <a href="#">RCGP: Sepsis</a></li> <li>• <a href="#">quick SEPSIS RELATED ORGAN FAILURE ASSESSMENT</a></li> </ul> |

| <i>Continuation of Emergency Situations</i> |   |
|---|---|
| Therapeutic Monitoring                      |   |
| OSCE  | <ul style="list-style-type: none"> <li>• <a href="#">Geeky Medics</a></li> <li>• <a href="#">Abdominal Examination - Demonstration - YouTube</a></li> <li>• <a href="#">Cardiovascular Examination - Demonstration - YouTube</a></li> <li>• <a href="#">Respiratory Examination - Demonstration - YouTube</a></li> <li>• <a href="#">Physical Diagnosis Skills - University of Washington School of Medicine</a></li> </ul> |
| Role Specific                               |   |
| Cervical Cytology                           | <ul style="list-style-type: none"> <li>• <a href="#">Guide to the interim assessment</a></li> <li>• <a href="#">British Association for Cytopathology</a></li> <li>• <a href="#">Lab Tests Online</a></li> </ul>  |
| Ear Care                                    | <ul style="list-style-type: none"> <li>• <a href="#">Ear Care Centre</a></li> <li>• <a href="#">RNID</a></li> </ul>   |
| Wound Management                            | <ul style="list-style-type: none"> <li>• <a href="#">Microworld</a></li> <li>• <a href="#">Tissue Viability Society</a></li> <li>• <a href="#">The BLS</a></li> <li>• <a href="#">Wounds on Thursdays</a></li> <li>• <a href="#">Wounds Week: Access 10 CPD-certified webinars (mah-communications.co.uk)</a></li> </ul>  |
| Minor Surgery                               |   |
| Obtaining Samples / Results                 | <ul style="list-style-type: none"> <li>• <a href="#">Lab Tests Online</a></li> </ul>  |

| Health Promotion / Health Screening               |   |
|---|---|
| Health Promotion / Population Health              | <ul style="list-style-type: none"> <li>• <a href="#">Better Health</a></li> <li>• <a href="#">EXi App</a></li> <li>• <a href="#">NHS England » Case study: 12,000 extra people shielded in Norfolk using population health management</a></li> </ul>  |
| Health Screening                                  | <ul style="list-style-type: none"> <li>• <a href="#">PHE Screening</a></li> </ul>   |
| PHE / OHID / UKHSA                                | <ul style="list-style-type: none"> <li>• <a href="#">Knowledge &amp; Library Services</a></li> <li>• <a href="#">Campaign Resources</a></li> <li>• <a href="#">Public Health Profiles</a></li> <li>• <a href="#">Health Publications</a></li> <li>• <a href="#">Health Profile for England 2021</a></li> <li>• <a href="#">English indices of deprivation 2019</a></li> </ul> |
| NHS Health Check                                  | <ul style="list-style-type: none"> <li>• <a href="#">NHS Health Check</a></li> </ul>  |
| NOIDS / PHE Surveillance / Syndromic Surveillance | <ul style="list-style-type: none"> <li>• <a href="#">Notifications of infectious diseases (NOIDs)</a></li> <li>• <a href="#">National flu and COVID-19 surveillance reports: 2021 to 2022 season - GOV.UK (www.gov.uk)</a></li> </ul>   |
| Addiction/Smoking                                 | <ul style="list-style-type: none"> <li>• <a href="#">Drink Coach</a></li> <li>• <a href="#">Stop smoking interventions and services</a></li> </ul>  |



## Immunisation / Travel Health

- [Vaccinations and infections](#)
- [Joint Committee on Vaccination and Immunisation](#)
- [Immunisation against infectious disease](#)
- [West Midlands Immunisation Service](#)
- [Immunisation information for Health Care Services within the West Midlands area](#)
- [Vaccination of individuals with uncertain or incomplete immunisation status](#)
- [WHO vaccine-preventable diseases: monitoring system. 2020 global summary](#)
- [The Foundations of Immunization: What, Who, When and Why?](#)
- [Winter Vaccination - Prime phase: Social Media content calendar and assets - 2021](#)
- [Measles outbreak training](#)
- [Vaccine Safety Basics](#)
- [UKHSA HPV vaccination guidance | PHE/DH/DWP guideline | Guidelines](#)

Flu

- [Flu and flu vaccinations](#)
- [The national influenza immunisation programme 2021 to 2022](#)
- [Flu vaccines for the 2021 to 2022 season poster](#)
- [Appendix C: Flu vaccinator competency assessment tool](#)
- [Healthcare assistants and flu vaccinations](#)
- [Flu Campaign Resources 2021/22](#)
- [National flu and COVID-19 surveillance reports published](#)
- [National flu immunisation programme plan 2022 to 2023 - GOV.UK \(www.gov.uk\)](#)
- [UKHSA flu immunisation 2022–2023 guideline | PHE/DH/DWP guideline | Guidelines](#)

*Continuation of Immunisation / Travel Health*

|                |  |
|----------------|--|
| Covid Vaccine  | <ul style="list-style-type: none"> <li>• <a href="#">Greenbook COVID-19 chapter 14a</a></li> <li>• <a href="#">Updates made to the COVID-19 vaccination elearning programme</a></li> <li>• <a href="#">HEE e-LfH COVID-19 vaccination programme launches hit 2 million</a></li> <li>• <a href="#">COVID-19 Vaccine Moderna e-learning now available</a></li> <li>• <a href="#">GP COVID-19 vaccine dashboard</a></li> <li>• <a href="#">Coronavirus (COVID-19) vaccines adverse reactions</a></li> <li>• <a href="#">NHS England » NHS delivers more than half of spring boosters as latest invites land</a></li> <li>• <a href="#">COVID-19 Vaccine Effectiveness in Variants of Concern: What Do We Currently Know? (medscape.org)</a></li> <li>• <a href="#">Coronavirus (COVID-19) Infection Survey, UK: antibody and vaccination data, 4 May 2022 - GOV.UK (www.gov.uk)</a></li> <li>• <a href="#">Immunity boost from fourth COVID jab may exceed third dose effect, new data suggest   MIMS online</a></li> </ul> |
| Children       |  |
| Adults         | <ul style="list-style-type: none"> <li>• <a href="#">Immunisation patient group direction (PGD) templates</a></li> <li>• <a href="#">Shingles immunisation programme: introduction of Shingrix® letter</a></li> <li>• <a href="#">UKHSA HPV vaccination guidance   PHE/DH/DWP guideline   Guidelines</a></li> </ul>  |
| Vaccine Update | <ul style="list-style-type: none"> <li>• <a href="#">Vaccine update: Issue 325, April 2022 (publishing.service.gov.uk)</a></li> <li>• <a href="#">Vaccine Update Index</a></li> <li>• <a href="#">Vaccine update: issue 328, May 2022, Shingrix® special edition - GOV.UK (www.gov.uk)</a></li> <li>• <a href="#">Vaccine update: issue 329, May 2022 - GOV.UK (www.gov.uk)</a></li> </ul>   |
| PGD            |  |
| Travel Health  | <ul style="list-style-type: none"> <li>• <a href="#">Travel Health Pro</a></li> <li>• <a href="#">Fit for Travel</a></li> <li>• <a href="#">Travel Health</a></li> <li>• <a href="#">Jane Chiodini</a></li> <li>• <a href="#">Corona.Help</a></li> </ul>   |

| Mental Health / Learning Disability / Disability |   |
|--|---|
| Mental Health                                    | <ul style="list-style-type: none"> <li>• <a href="#">Mental Health</a></li> <li>• <a href="#">Mental Health UK</a></li> <li>• <a href="#">Mind</a></li> <li>• <a href="#">Place2b</a></li> <li>• <a href="#">Rethink Mental Illness</a></li> <li>• <a href="#">Young Minds</a></li> <li>• <a href="#">Every Mind Matters</a></li> <li>• <a href="#">Calm</a></li> <li>• <a href="#">Headspace</a></li> <li>• <a href="#">We Can Talk</a></li> <li>• <a href="#">Get Your Mind Plan</a></li> <li>• <a href="#">Feeling low?</a></li> <li>• <a href="#">Better Health - Every Mind Matters - Resources</a></li> <li>• <a href="#">ZSA Training</a></li> <li>• <a href="#">Psychiatry - Medscape</a></li> <li>• <a href="#">NHS England » NHS fast tracks mental health support for millions of pupils</a></li> <li>• <a href="#">Loneliness - Every Mind Matters - NHS (www.nhs.uk)</a></li> <li>• <a href="#">New guidance published on eating-disorder-related medical emergencies   News   Guidelines</a></li> </ul> |
| Learning Disability                              | <ul style="list-style-type: none"> <li>• <a href="#">Learning Disabilities</a></li> <li>• <a href="#">Learning Disability England</a></li> <li>• <a href="#">Mencap</a></li> <li>• <a href="#">Bild</a></li> <li>• <a href="#">Autism</a></li> <li>• <a href="#">SEND review: right support, right place, right time - GOV.UK (www.gov.uk)</a></li> <li>• <a href="#">New annual checks for people with learning disabilities (rcni.com)</a></li> <li>• <a href="#">Learning disabilities - Annual health checks - NHS (www.nhs.uk)</a></li> </ul>  |
| Disability (Inc. hearing and visual)             | <ul style="list-style-type: none"> <li>• <a href="#">Disability Rights UK</a></li> <li>• <a href="#">Disability Matters</a></li> <li>• <a href="#">RNID - National hearing loss charity</a></li> </ul>  |

From Cradle to...

|                          |   |
|--------------------------|---|
| <p>Infant Health</p>     | <ul style="list-style-type: none"> <li>• <a href="#">Tommys</a></li> <li>• <a href="#">First Steps Nutrition Trust</a></li> <li>• <a href="#">Bliss</a></li> <li>• <a href="#">NHS App - Baby Buddy</a></li> <li>• <a href="#">NHS App - Peanut</a></li> <li>• <a href="#">ICON Toolkit</a></li> <li>• <a href="#">Infant formulae   MIMS online</a></li> <li>• <a href="#">Why-Health-Visitors-Matter.pdf (parentinfantfoundation.org.uk)</a></li> </ul>   |
| <p>Child Health</p>      | <ul style="list-style-type: none"> <li>• <a href="#">Unicef</a></li> <li>• <a href="#">Health Professional Academy</a></li> <li>• <a href="#">Premature Babies</a></li> <li>• <a href="#">Child and Maternal Health</a></li> <li>• <a href="#">Women and Child First</a></li> <li>• <a href="#">Child Health Information Services</a></li> <li>• <a href="#">Place2b</a></li> <li>• <a href="#">Childhood eczema</a></li> <li>• <a href="#">Childhood asthma</a></li> <li>• <a href="#">Paediatrics for Primary Care (and anyone else) (gppaedstips.blogspot.com)</a></li> <li>• <a href="#">Increase in hepatitis (liver inflammation) cases in children under investigation - GOV.UK (www.gov.uk)</a></li> <li>• <a href="#">Increased mental health support for children and young people - GOV.UK (www.gov.uk)</a></li> </ul> |
| <p>Adolescent Health</p> | <ul style="list-style-type: none"> <li>• <a href="#">Adolescent Health Programme</a></li> <li>• <a href="#">Society for Adolescent Health and Medicine</a></li> <li>• <a href="#">Young Minds</a></li> <li>• <a href="#">Save a life MenACWY campaign booklet - Health Publications</a></li> <li>• <a href="#">NHS England » NHS fast tracks mental health support for millions of pupils</a></li> </ul>  |

|                |   |
|----------------|---|
| Mens Health    | <ul style="list-style-type: none"><li>• <a href="#">Mens Health Forum</a></li><li>• <a href="#">Mens Health Month</a></li><li>• <a href="#">Mens health.org</a></li><li>• <a href="#">Mens Health UK</a></li><li>• <a href="#">Men and mental health</a></li><li>• <a href="#">Men's Mental Health Awareness</a></li><li>• <a href="#">Prostate Cancer UK</a></li><li>• <a href="#">Orchid Fighting Male Cancer</a></li><li>• <a href="#">Prostate Cancer UK Facebook Page</a></li><li>• <a href="#">Men's Voices Event</a></li><li>• <a href="#">Movember</a></li><li>• <a href="#">Men's health guidance   NHS Employers</a></li><li>• <a href="#">UKHSA HPV vaccination guidance   PHE/DH/DWP guideline   Guidelines</a></li></ul>   |
| Women's Health | <ul style="list-style-type: none"><li>• <a href="#">Womens Health Concern</a></li><li>• <a href="#">Well Being of Women</a></li><li>• <a href="#">Coppa Feel</a></li><li>• <a href="#">Menopause Matters</a></li><li>• <a href="#">The Menopause Charity</a></li><li>• <a href="#">Royal College of Obstetricians and Gynaecologists - Guidelines</a></li><li>• <a href="#">Pelvic Partnership</a></li><li>• <a href="#">CRUK - Womens Cancer</a></li><li>• <a href="#">Breast Cancer Now</a></li><li>• <a href="#">Foundation for Women's Cancer</a></li><li>• <a href="#">Eve Appeal</a></li><li>• <a href="#">Ovarian.Org</a></li><li>• <a href="#">Jo's Trust</a></li><li>• <a href="#">Well Spring</a></li><li>• <a href="#">HRT products limited to three-month supply   MIMS online</a></li><li>• <a href="#">New blood test could help diagnose ovarian cancer faster - Nursing in Practice</a></li></ul> |

|                                   |   |
|-----------------------------------|---|
| The Older Population              | <ul style="list-style-type: none"> <li>• <a href="#">BGS</a></li> <li>• <a href="#">Ageing Better</a></li> <li>• <a href="#">Delirium Champions - YouTube</a></li> </ul>  |
| Carers / Social Care / Care Homes | <ul style="list-style-type: none"> <li>• <a href="#">The Care Provider Alliance</a></li> <li>• <a href="#">Skills for Care</a></li> <li>• <a href="#">The Care Workers' Charity</a></li> <li>• <a href="#">Supporting Adult Carers</a></li> <li>• <a href="#">Adult Social Care Update</a></li> <li>• <a href="#">Dementia Action Week: Chief Nurse for Adult Social Care champions care sector</a></li> <li>• <a href="#">Chief Social Worker for Adults publishes annual report - GOV.UK (www.gov.uk)</a></li> <li>• <a href="#">Increased funding for nursing in care homes - GOV.UK (www.gov.uk)</a></li> </ul> |
| Young Carers                      |   |
| Complex Needs                     |   |
| Family Planning & Sexual Health   |   |
| Family Planning                   | <ul style="list-style-type: none"> <li>• <a href="#">Faculty of Sexual and Reproductive Healthcare Education and Training</a></li> </ul>  |
| Reproductive                      | <ul style="list-style-type: none"> <li>• <a href="#">Tommys</a></li> </ul>  |
| Sexual Health / Sexual Abuse      | <ul style="list-style-type: none"> <li>• <a href="#">Sexual and Reproductive Health Profiles</a></li> <li>• <a href="#">FSRH Education &amp; Training</a></li> <li>• <a href="#">UKHSA HPV vaccination guidance   PHE/DH/DWP guideline   Guidelines</a></li> </ul>  |
| Maternity / Neonate health        | <ul style="list-style-type: none"> <li>• <a href="#">Why Health Visitors Matter</a></li> </ul>  |

| Care of Patients with Long Term Conditions |   |
|--|---|
| LTC  | <ul style="list-style-type: none"> <li>• <a href="#">Physical Activity for the Prevention and Management of Long-Term Conditions</a></li> <li>• <a href="#">Expert Insights   Chiesi Air</a></li> </ul>   |
| Diabetes & Pre-Diabetes                    | <ul style="list-style-type: none"> <li>• <a href="#">AZ Medical and Educational Goods and Services in Diabetes</a></li> <li>• <a href="#">Mumoactive</a></li> <li>• <a href="#">The mySugr App</a></li> <li>• <a href="#">Foot Check</a></li> <li>• <a href="#">More personalised treatment 'could transform' type 2 diabetes care, research finds - Nursing in Practice</a></li> <li>• <a href="#">Best practice treatment and management of patients with type 2 diabetes, cardiovascular disease, and heart failure   Working party guideline/algorithm   Guidelines</a></li> <li>• <a href="#">NHS England » Healthy Living for people with type 2 diabetes: Patient leaflet</a></li> </ul> |
| Respiratory                                | <ul style="list-style-type: none"> <li>• <a href="#">Spirometry: step by step</a></li> <li>• <a href="#">ARTP</a></li> <li>• <a href="#">British Lung Foundation</a></li> <li>• <a href="#">The Primary Care Respiratory Society</a></li> <li>• <a href="#">UKHSA IPC for seasonal respiratory infections guideline   PHE/DH/DWP guideline   Guidelines</a></li> <li>• <a href="#">UKHSA staff with symptoms of a respiratory infection guideline   PHE/DH/DWP guideline   Guidelines</a></li> <li>• <a href="#">First metered-dose inhaler certified 'carbon-neutral'   MIMS online</a></li> </ul>   |
| COPD                                       | <ul style="list-style-type: none"> <li>• <a href="#">Right Breathe</a></li> <li>• <a href="#">GOLD COPD 2022 strategy   Independent professional body guideline   Guidelines</a></li> </ul>   |
| Asthma                                     | <ul style="list-style-type: none"> <li>• <a href="#">FeNO - Fractional exhaled nitric oxide - for the diagnosis and management of Asthma</a></li> <li>• <a href="#">Asthma UK</a></li> <li>• <a href="#">Asthma: diagnosis, monitoring and chronic asthma management</a></li> <li>• <a href="#">GINA 2021: the missing pieces in the childhood asthma puzzle</a></li> <li>• <a href="#">GINA: Interim Guidance About COVID-19 &amp; Asthma</a></li> <li>• <a href="#">SIGN and BTS management of asthma in children guideline   Independent professional body guideline   Guidelines</a></li> </ul>   |

*Continuation of Long Term Conditions*

|                        |  |
|------------------------|--|
| Hypertension           | <ul style="list-style-type: none"> <li>• <a href="#">British Heart Foundation</a></li> <li>• <a href="#">Blood Pressure UK</a></li> <li>• <a href="#">Hypertension in adults: diagnosis and management</a></li> <li>• <a href="#">Hypertension in adults: diagnosis and treatment</a></li> <li>• <a href="#">NICE hypertension guideline   NICE guideline   Guidelines</a></li> <li>• <a href="#">Hypertension optimisation and management in primary care – CMB TV On Demand (cardiometabology.com)</a></li> </ul>  |
| CVD/AF                 | <ul style="list-style-type: none"> <li>• <a href="#">QRISK®3-2018 risk calculator</a></li> <li>• <a href="#">Heart Rhythm Alliance</a></li> <li>• <a href="#">CVD risk assessment and management</a></li> <li>• <a href="#">AHA Journals</a></li> <li>• <a href="#">NHS lipid management pathway   NHS guideline   Guidelines</a></li> <li>• <a href="#">CVD Training - Lipid Management Tickets, Multiple Dates   Eventbrite</a></li> <li>• <a href="#">Best practice treatment and management of patients with type 2 diabetes, cardiovascular disease, and heart failure   Working party guideline/algorithm   Guidelines</a></li> <li>• <a href="#">NHS statin intolerance pathway   PHE/DH/DWP guideline   Guidelines</a></li> <li>• <a href="#">Clinical focus: cardiovascular disease   Information   Guidelines</a></li> <li>• <a href="#">CVD Training - Lipid Management Tickets, Multiple Dates   Eventbrite</a></li> <li>• <a href="#">On-demand webinar – anticoagulation management for elderly patients with NVAf (contains promotional content from BMS/Pfizer) (mcp.co.uk)</a></li> </ul> |
| Heart Failure          | <ul style="list-style-type: none"> <li>• <a href="#">British Heart Foundation</a></li> <li>• <a href="#">British Society Guidelines</a></li> <li>• <a href="#">Consider safety of calcium supplements in older people with aortic stenosis, say researchers   MIMS online</a></li> </ul>   |
| Cancer / Oncology      | <ul style="list-style-type: none"> <li>• <a href="#">Surviving Thyroid Cancer</a></li> <li>• <a href="#">Help Us Help You - Lung Cancer Symptoms</a></li> <li>• <a href="#">Becca Breast Cancer Support App</a></li> <li>• <a href="#">Breast Cancer Now</a></li> <li>• <a href="#">MoleCare App</a></li> <li>• <a href="#">Macmillian</a></li> <li>• <a href="#">Bowel Cancer UK</a></li> <li>• <a href="#">NHS England » A record year for people receiving lifesaving NHS cancer checks</a></li> <li>• <a href="#">Managing adult malnutrition in the community</a></li> </ul>  |
| Chronic Kidney Disease | <ul style="list-style-type: none"> <li>• <a href="#">Kidney.Org</a></li> <li>• <a href="#">Kidney Quality Improvement Partnership</a></li> <li>• <a href="#">The modern management of Chronic Kidney Disease – CMB TV On Demand (cardiometabology.com)</a></li> </ul>  |



*Continuation of Long Term Conditions*

|                            |   |
|----------------------------|---|
| Liver Disease              | <ul style="list-style-type: none"> <li>• <a href="#">British Liver Trust</a></li> <li>• <a href="#">Liver Research</a></li> <li>• <a href="#">BRITISH ASSOCIATION FOR THE STUDY OF THE LIVER</a></li> <li>• <a href="#">LIVERNORTH</a></li> <li>• <a href="#">LIVER DISEASE AND CIRRHOSIS</a></li> </ul>  |
| Blood Disorders            | <ul style="list-style-type: none"> <li>• <a href="#">Blood Cancer</a></li> <li>• <a href="#">Thalassaemia</a></li> <li>• <a href="#">ITP</a></li> <li>• <a href="#">Haemophilia</a></li> <li>• <a href="#">UK MDS Forum</a></li> <li>• <a href="#">Save a life. Give plasma.</a></li> <li>• <a href="#">Diagnosis and management of pernicious anaemia</a></li> <li>• <a href="#">Haemochromatosis UK</a></li> <li>• <a href="#">GPnotebook focus on haematology (contains promotional information) (mailchi.mp)</a></li> </ul> |
| G.I                        | <ul style="list-style-type: none"> <li>• <a href="#">GIST Cancer UK</a></li> <li>• <a href="#">Overview   PredictSURE IBD and IBDX to guide treatment of Crohn's disease</a></li> <li>• <a href="#">Training device for reflux and dysphagia available on NHS   MIMS online</a></li> </ul>  |
| ENT                        |   |
| G.U                        |   |
| ME / CFS / Fibromyalgia    | <ul style="list-style-type: none"> <li>• <a href="#">NICE outlines steps needed to put ME/CFS guideline into practice   News and features   News   NICE</a></li> </ul>  |
| Neurological Conditions    | <ul style="list-style-type: none"> <li>• <a href="#">The Brain Tumour Charity</a></li> <li>• <a href="#">Narcolepsy.Org</a></li> <li>• <a href="#">ACNR</a></li> <li>• <a href="#">NICE epilepsies guideline   NICE guideline   Guidelines</a></li> </ul>   |
| Musculoskeletal Conditions | <ul style="list-style-type: none"> <li>• <a href="#">Rheumatology</a></li> <li>• <a href="#">National Axial Spondyloarthritis Society</a></li> <li>• <a href="#">Musculoskeletal health</a></li> <li>• <a href="#">Musculoskeletal health: 5 year prevention strategic framework</a></li> <li>• <a href="#">Faculty of Occupational Medicine</a></li> <li>• <a href="#">Guide to embedding your first contact physiotherapy service</a></li> </ul>  |

*Continuation of Long Term Conditions*

|   |  |
|---|--|
| <p>Endocrine Disorders / Metabolic Disorders</p>  | <ul style="list-style-type: none"> <li>• <a href="#">Endocrinology</a></li> <li>• <a href="#">Turner Syndrome Support Society</a></li> <li>• <a href="#">Thyroid Eye Disease</a></li> <li>• <a href="#">British Thyroid Foundation</a></li> <li>• <a href="#">Thyroid UK</a></li> <li>• <a href="#">Pituitary</a></li> <li>• <a href="#">Addisons Disease</a></li> <li>• <a href="#">Parathyroid UK</a></li> <li>• <a href="#">The Royal Osteoporosis Society</a></li> <li>• <a href="#">Metabolic Support UK</a></li> </ul> |
| <p>Frailty</p>                                    | <ul style="list-style-type: none"> <li>• <a href="#">Recognising frailty</a></li> <li>• <a href="#">Identifying frailty</a></li> <li>• <a href="#">CLINICAL FRAILTY SCALE</a></li> <li>• <a href="#">Browse by Tags: vision - edShare@GCU</a></li> <li>• <a href="#">Studio (instructuremedia.com)</a></li> <li>• <a href="#">Bedside vision check for falls prevention: assessment tool   RCP London</a></li> <li>• <a href="#">The importance of vision in preventing falls</a></li> </ul>                                 |
| <p>Dementia</p>                                   | <ul style="list-style-type: none"> <li>• <a href="#">Dementia UK</a></li> <li>• <a href="#">Understanding dementia</a></li> <li>• <a href="#">My House of Memories - NHS App</a></li> <li>• <a href="#">Dementia profile updates</a></li> <li>• <a href="#">Caring for Carers Dementia Support Group (Tuesdays)</a></li> <li>• <a href="#">Delirium Champions</a></li> <li>• <a href="#">Medscape Dementia</a></li> <li>• <a href="#">10-year plan to tackle dementia announced   News   Guidelines</a></li> </ul>           |
| <p>Allergy / Auto-immune / Genetic Conditions</p> | <ul style="list-style-type: none"> <li>• <a href="#">Allergy UK</a></li> <li>• <a href="#">Rheumatology</a></li> <li>• <a href="#">Addisons Disease</a></li> <li>• <a href="#">College issues eye health tips for hay fever sufferers as pollen levels rise - College of Optometrists (college-optometrists.org)</a></li> <li>• <a href="#">Hayfever treatments   MIMS online</a></li> </ul>   |

*Continuation of Long Term Conditions*

|                 |   |
|-----------------|---|
| Dermatology     | <ul style="list-style-type: none"> <li>• <a href="#">British Association of Dermatologists</a></li> <li>• <a href="#">Eczema</a></li> <li>• <a href="#">The British Skin Foundation</a></li> <li>• <a href="#">Acne vulgaris: management</a></li> <li>• <a href="#">The Primary Care Dermatology Society</a></li> <li>• <a href="#">Acne.org</a></li> <li>• <a href="#">Allergy UK</a></li> <li>• <a href="#">Urticaria</a></li> <li>• <a href="#">Hives</a></li> <li>• <a href="#">Sunburn</a></li> <li>• <a href="#">Causes of cancer and reducing your risk</a></li> <li>• <a href="#">What is Rosacea?</a></li> <li>• <a href="#">Rosecea</a></li> <li>• <a href="#">Herpes.org</a></li> <li>• <a href="#">Shingles</a></li> <li>• <a href="#">Fungal Skin Infection - Foot</a></li> <li>• <a href="#">The Psoriasis Association</a></li> <li>• <a href="#">Psoriasis</a></li> <li>• <a href="#">Melanoma</a></li> <li>• <a href="#">Skin Health Information</a></li> <li>• <a href="#">British Association of Plastic Reconstructive and Aesthetic Surgeons</a></li> <li>• <a href="#">Warts and verrucae</a></li> </ul> |
| Obesity         | <ul style="list-style-type: none"> <li>• <a href="#">Obesity UK</a></li> <li>• <a href="#">Referral to Weight Management Programme Version 2</a></li> <li>• <a href="#">NHS England » The NHS Digital Weight Management Programme</a></li> <li>• <a href="#">More personalised treatment 'could transform' type 2 diabetes care, research finds - Nursing in Practice</a></li> </ul>  |
| Pain Management | <ul style="list-style-type: none"> <li>• <a href="#">Pain Concern</a></li> <li>• <a href="#">UK career framework for pain nurses</a></li> </ul>   |

*Continuation of Long Term Conditions*

|   |   |
|---|---|
| Genomics  |   |
| Multi-Morbidity                                 | <ul style="list-style-type: none"> <li>• <a href="#">Multimorbidity</a></li> <li>• <a href="#">Multimorbidity / multiple long-term conditions (MLTC)</a></li> </ul>   |
| Minor Illness / First Contact Assessment / OSCE | <ul style="list-style-type: none"> <li>• <a href="#">Fact Sheets - Self Care Forum</a></li> </ul>   |
| Other / Case Studies                            | <ul style="list-style-type: none"> <li>• <a href="#">Ultra Rare Disease Disorders And Disabilities Foundation</a></li> <li>• <a href="#">MyCognition Home - NHS App</a></li> <li>• <a href="#">The Cold Weather Plan for England</a></li> <li>• <a href="#">NICE recommends offering app-based treatment for people with insomnia instead of sleeping pills   News and features   News   NICE</a></li> <li>• <a href="#">Four more monkeypox cases in UK bring total to seven   News   Guidelines</a></li> </ul>  |
| End of Life Care                                |   |
| End of Life Care                                | <ul style="list-style-type: none"> <li>• <a href="#">ReSPECT for healthcare professionals</a></li> <li>• <a href="#">Hospice UK</a></li> </ul>  |
| Covid-19  |   |
| Covid-19  | <ul style="list-style-type: none"> <li>• <a href="#">Covid Live</a></li> <li>• <a href="#">COVID-19 variants: genomically confirmed case numbers - GOV.UK (www.gov.uk)</a></li> <li>• <a href="#">NHS rolls out second arthritis drug to treat COVID-19   MIMS online</a></li> <li>• <a href="#">NICE managing COVID-19 guideline   NICE guideline   Guidelines</a></li> </ul>  |
| Long Covid                                      | <ul style="list-style-type: none"> <li>• <a href="#">Supporting your recovery after COVID-19</a></li> <li>• <a href="#">Long Covid Toolkit</a></li> <li>• <a href="#">Long term effects of COVID (Long COVID)</a></li> <li>• <a href="#">Post-COVID Syndrome (Long COVID)</a></li> <li>• <a href="#">COVID-19 Yorkshire Rehabilitation Screening Tool</a></li> <li>• <a href="#">FOM Guidance</a></li> <li>• <a href="#">Lung health care after COVID-19</a></li> <li>• <a href="#">NICE managing COVID-19 guideline   NICE guideline   Guidelines</a></li> <li>• <a href="#">NIHR Evidence - Researching long COVID: addressing a new global health challenge - Informative and accessible health and care research</a></li> </ul> |
| Covid Response / Recovery                       | <ul style="list-style-type: none"> <li>• <a href="#">NHS England » Enabling the workforce for elective recovery</a></li> </ul>  |

| News & Views                         |  |
|--------------------------------------|--|
| Digital News / Remote Consultations  | <ul style="list-style-type: none"> <li>• <a href="#">Digital Health News Webinars</a></li> <li>• <a href="#">Digital Health News</a></li> <li>• <a href="#">NHS Digital</a></li> <li>• <a href="#">Supporting patient engagement with digital health care innovations (nuffieldtrust.org.uk)</a></li> <li>• <a href="#">Digital Health Networks Newsletter: 16 May 2022 (mailchi.mp)</a></li> <li>• <a href="#">Putting patients first: championing good practice in combatting digital health inequalities (patients-association.org.uk)</a></li> <li>• <a href="#">New report finds healthcare staff need support to use AI safely   Health Education England (hee.nhs.uk)</a></li> <li>• <a href="#">NHS England » New digital and online services requirements: guidance for GP practices</a></li> </ul> |
| PSNC News / Pharmacy                 | <ul style="list-style-type: none"> <li>• <a href="#">National Pharmacy Association</a></li> <li>• <a href="#">Royal Pharmaceutical Society</a></li> <li>• <a href="#">Medicines Learning Portal</a></li> <li>• <a href="#">Specialist Pharmacy Service</a></li> <li>• <a href="#">PSNC Newsletter: 11th May (mailchi.mp)</a></li> <li>• <a href="#">PSNC Newsletter: 13th May (mailchi.mp)</a></li> <li>• <a href="#">Pharmacy Review Steering Group Update: Two weeks to contractor vote (mailchi.mp)</a></li> <li>• <a href="#">PSNC Newsletter: 16th May (mailchi.mp)</a></li> <li>• <a href="#">May 2022 Price Concessions 2nd Update (mailchi.mp)</a></li> </ul>  |
| Pulse / GP Online / HSJ / NB Medical | <ul style="list-style-type: none"> <li>• <a href="#">GP Online</a></li> <li>• <a href="#">HSJ</a></li> <li>• <a href="#">Pulse Today</a></li> </ul>  |
| Primary Care Update / PCC / PPP      | <ul style="list-style-type: none"> <li>• <a href="#">Public Policy Projects News</a></li> <li>• <a href="#">Primary Care Bulletin</a></li> </ul>   |
| Health Care Leaders Newsletters      |  |
| Kings Fund                           | <ul style="list-style-type: none"> <li>• <a href="#">The Kings Fund</a></li> <li>• <a href="#">Ideas that change health and care</a></li> <li>• <a href="#">New dates: Leading for the delivery of integrated care (kingsfundmail.org.uk)</a></li> <li>• <a href="#">The Health and Care Act   The King's Fund (kingsfund.org.uk)</a></li> </ul>   |
| World Health Organisation            | <ul style="list-style-type: none"> <li>• <a href="#">WHO</a></li> <li>• <a href="#">OpenWHO</a></li> </ul>   |

*Continuation News & Views*

|   |  |
|---|--|
| IHCT / CCG / STP / Healthier Futures                      | <ul style="list-style-type: none"> <li>• <a href="#">Healthier Futures</a></li> <li>• <a href="#">Black Country &amp; West Birmingham CCG</a></li> <li>• <a href="#">Dudley Integrated Health and Care</a></li> <li>• <a href="#">Dudley CCG</a></li> <li>• <a href="#">Home :: Black Country Healthcare NHS Foundation Trust</a></li> </ul>   |
| NHSI / NHSE   |  |
| University / Student Nurses                               |  |
| Medisa / Univadis / Geeky Medics / GP Notebook / Medscape | <ul style="list-style-type: none"> <li>• <a href="#">Univadis Newsletter</a></li> <li>• <a href="#">Univadis Nurses Headlines</a></li> <li>• <a href="#">Medisa</a></li> <li>• <a href="#">Geeky Medics</a></li> <li>• <a href="#">Medscape Nurses</a></li> <li>• <a href="#">GP Notebook</a></li> <li>• <a href="#">GPnotebook quick update (contains promotional info from GSK: Are you following NICE COPD Guidelines?) (campaign-archive.com)</a></li> </ul> |
| Nurse Guidelines  | <ul style="list-style-type: none"> <li>• <a href="#">Expert Insights   Chiesi Air</a></li> <li>• <a href="#">Updated summary: HPV vaccination guidance (mcp.co.uk)</a></li> <li>• <a href="#">Infection prevention &amp; control: what can we learn from the pandemic? (mcp.co.uk)</a></li> </ul>  |
| The Health Foundation                                     | <ul style="list-style-type: none"> <li>• <a href="#">The Health Foundation</a></li> <li>• <a href="#">Health and Care for older adults during the pandemic across 11 countries (healthfdn.org.uk)</a></li> <li>• <a href="#">Newsletter: What the public think about health and care, and why it's important (healthfdn.org.uk)</a></li> </ul>   |
| The Health Care Leaders Update                            | <ul style="list-style-type: none"> <li>• <a href="#">Health Care Leader News</a></li> </ul>  |
| Practice Index  |  |
| Innovation Agency   | <ul style="list-style-type: none"> <li>• <a href="#">Innovation Agency Exchange</a></li> </ul>   |
| NMC   | <ul style="list-style-type: none"> <li>• <a href="#">NMC</a></li> <li>• <a href="#">NMC set to overhaul public health and community nursing standards (rcni.com)</a></li> </ul>  |

*Continuation News & Views*

RCN

- [RCN](#)
- [London mental health trust seeks local nurses to join its team \(rcni.com\)](#)
- [What did nurse researchers learn from the COVID-19 pandemic? \(rcni.com\)](#)
- [Nursing in the Royal Navy: what are the career options? \(rcni.com\)](#)
- [Home - Here for life](#)
- [Showcasing the contribution of nursing on International Nurses' Day| Royal College of Nursing \(rcn.org.uk\)](#)
- [RCN England NHS Pensions Update webinar 25 May | Royal College of Nursing](#)
- [London mental health trust seeks local nurses to join its team \(rcni.com\)](#)
- [Practice learning supervision: how to keep relationships positive \(rcni.com\)](#)
- [RCN exhibition documents 100 years of learning disability nursing \(rcni.com\)](#)
- [What did nurse researchers learn from the COVID-19 pandemic? \(rcni.com\)](#)
- [Why I helped to prosecute a patient after I was assaulted at work \(rcni.com\)](#)
- [Nursing Workforce Standards | Professional Development | Royal College of Nursing \(rcn.org.uk\)](#)
- [Raising concerns toolkit | Royal College of Nursing \(rcn.org.uk\)](#)
- ['Radical action needed to boost nursing workforce' | News | Royal College of Nursing \(rcn.org.uk\)](#)
- [Neurodiverse nursing staff new RCN guidance provides practical advice and support | News | Royal College of Nursing](#)
- [The importance of clinical supervision | Blogs | Royal College of Nursing \(rcn.org.uk\)](#)
- [Progressive health care that delivers for LGBTQ people | Royal College of Nursing \(rcn.org.uk\)](#)

*Continuation News & Views*

|   |  |
|---|--|
| <p>Nursing in Practice / Nursing Standard / Independent Nurse</p> | <ul style="list-style-type: none"> <li>• <a href="#">Nursing Times</a></li> <li>• <a href="#">Independent Nurse Magazine</a></li> <li>• <a href="#">Practice Nursing</a></li> <li>• <a href="#">Practice Nursing Community</a></li> <li>• <a href="#">Practice Nursing in Practice</a></li> <li>• <a href="#">GPN Bulletin</a></li> <li>• <a href="#">NMC set to overhaul public health and community nursing standards (rcni.com)</a></li> <li>• <a href="#">New annual checks for people with learning disabilities (rcni.com)</a></li> <li>• <a href="#">Nurse staffing: can retirees solve the patient care crisis? (rcni.com)</a></li> <li>• <a href="#">Will renewed NHS parking charges push staff out of nursing? (rcni.com)</a></li> <li>• <a href="#">Reflecting on 'insider' and 'outsider' positionality when undertaking culturally sensitive research with young Pakistani men: insights from a female researcher (rcni.com)</a></li> <li>• <a href="#">Independent Nurse May 2022 (mydigitalpublication.co.uk)</a></li> </ul> |
| <p>QNI</p>  | <ul style="list-style-type: none"> <li>• <a href="#">QNI</a></li> <li>• <a href="#">Events – The Queen's Nursing Institute (qni.org.uk)</a></li> <li>• <a href="#">Individual Actions for a Greener Planet – The Queen's Nursing Institute (qni.org.uk)</a></li> <li>• <a href="#">Talk To Us © – The Queen's Nursing Institute (qni.org.uk)</a></li> <li>• <a href="#">Application for QNI Petrol Grant 2022</a></li> <li>• <a href="#">QNI Head of Communications raises funds for humanitarian relief in Ukraine – The Queen's Nursing Institute</a></li> <li>• <a href="#">QNI Responds to NMC's Announcement on Community Nursing Standards – The Queen's Nursing Institute</a></li> </ul>  |
| <p>CMO / CNO</p>  |  |
| <p>WHO</p>  | <ul style="list-style-type: none"> <li>• <a href="#">WHO</a></li> <li>• <a href="#">MOOCs - start to enjoy learning now   OpenWHO</a></li> </ul>   |
| <p>Nice</p>   | <ul style="list-style-type: none"> <li>• <a href="#">NICE</a></li> <li>• <a href="#">NICE recommends offering app-based treatment for people with insomnia instead of sleeping pills   News and features   News   NICE</a></li> </ul>  |



*Continuation News & Views*

|  |  |
|--|--|
| RCGP / BMA / The Lancet                  | <ul style="list-style-type: none"> <li>• <a href="#">The Lancet</a></li> <li>• <a href="#">British Medical Journal</a></li> <li>• <a href="#">Royal College of General Practitioners</a></li> <li>• <a href="#">Take part in the consultation - GMC (gmc-uk.org)</a></li> <li>• <a href="#">The UK Government 'failed in its duty of care' to doctors and the healthcare workforce in its handling of the pandemic, says BMA - BMA media centre - BMA</a></li> </ul> |
| Midlands Academic Health Science Network | <ul style="list-style-type: none"> <li>• <a href="#">WMAHSN Network</a></li> <li>• <a href="#">WMAHSN May Update</a></li> </ul>  |
| Healthwatch                              | <ul style="list-style-type: none"> <li>• <a href="#">Healthwatch</a></li> </ul>  |
| Other                                    |  |

Free Training / Webinars / Meetings / CPD

|   |  |
|---|--|
| Development / Information and Knowledge | <ul style="list-style-type: none"> <li>• <a href="#">FutureProof Health Training &amp; Events</a></li> <li>• <a href="#">Red Whale Training</a></li> <li>• <a href="#">LATEST WEBINARS FROM ISSUES &amp; ANSWERS</a></li> <li>• <a href="#">Nursing Events</a></li> <li>• <a href="#">NNG Conference week - Register today (mahealthcareevents.co.uk)</a></li> <li>• <a href="#">Agenda - Guidelines Live 2022</a></li> <li>• <a href="#">On-demand webinar – anticoagulation management for elderly patients with NVAf (contains promotional content from BMS/Pfizer) (mgp.co.uk)</a></li> <li>• <a href="#">30 May, 3pm – 4pm. Partnerships with people and communities in primary care: The art of the possible</a></li> <li>• <a href="#">9 June, 5pm - 6pm. General practice webinar</a></li> <li>• <a href="#">London 2022 Registration - MIMS Learning Live</a></li> <li>• <a href="#">CVD Training - Lipid Management Tickets, Multiple Dates   Eventbrite</a></li> <li>• <a href="#">Managing severe asthma in patients in primary care—promotional webinar invitation (webinar commissioned by Boehringer Ingelheim Limited) (mgp.co.uk)</a></li> <li>• <a href="#">Agenda   Primary Care Learnings (mimsworkshops.co.uk)</a></li> <li>• <a href="#">The modern management of Chronic Kidney Disease – CMB TV On Demand (cardiometabology.com)</a></li> <li>• <a href="#">Hypertension optimisation and management in primary care – CMB TV On Demand (cardiometabology.com)</a></li> <li>• <a href="#">MOOCs - start to enjoy learning now   OpenWHO</a></li> <li>• <a href="#">AstraZeneca: Invitation to Long Term Conditions Leadership Forum (AstraZeneca medicines will be discussed at this meeting)</a></li> <li>• <a href="#">New eLearning module: Deep dive on DPP-4 inhibitors (contains promotional material from Boehringer Ingelheim) (mgp.co.uk)</a></li> <li>• <a href="#">London 2022 Registration - MIMS Learning Live</a></li> </ul> |
|---|--|

*Continuation of Free Training / Webinars / Meetings / CPD*

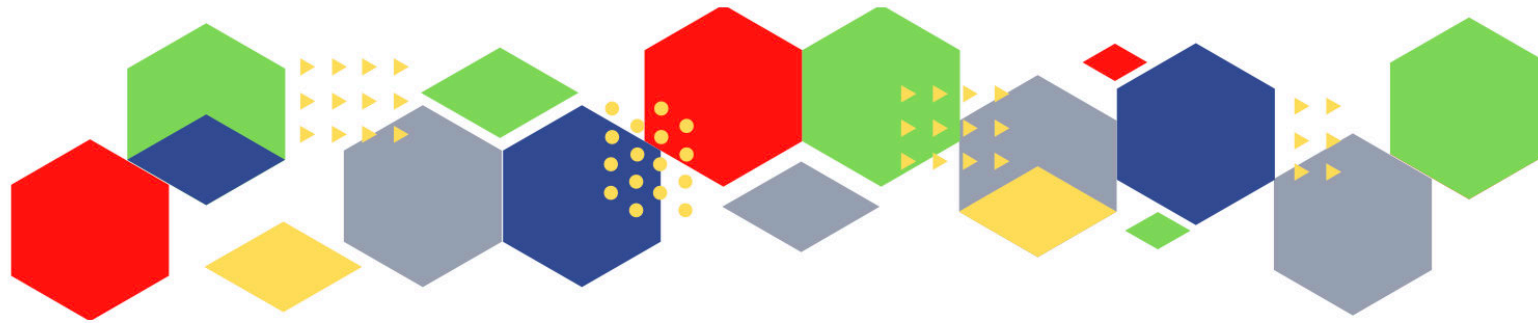
|                              |   |
|------------------------------|---|
| Future Proof Health Training | <ul style="list-style-type: none"> <li>• <a href="#">Vaccination &amp; Immunisation Updates 2022</a></li> <li>• <a href="#">Diabetes Review: Getting it right from the start</a></li> <li>• <a href="#">Type 2 Diabetes and the medication choices in diabetes care and covid</a></li> <li>• <a href="#">Menopause Day</a></li> <li>• <a href="#">ENT 1/2 Day</a></li> </ul>  |
| BCWB Training Hub            | <ul style="list-style-type: none"> <li>• <a href="#">Latest news from the Black Country and West Birmingham Training Hub (campaign-archive.com)</a></li> </ul>  |
| Evidence based care          |   |
| Eventbrite                   | <ul style="list-style-type: none"> <li>• <a href="#">Future Proof Health Eventbrite Page</a></li> <li>• <a href="#">Acute Behavioural Crisis in CAMHS Registration, Multiple Dates   Eventbrite</a></li> <li>• <a href="#">Palliative &amp; end of life care for people experiencing homelessness (2-day) Tickets, Thu 5 May 2022 at 09:00   Eventbrite</a></li> <li>• <a href="#">Diabetes Education Update: 9 Care Processes and 3 Treatment Targets</a></li> <li>• <a href="#">Spreading VGCs at scale: Learnings from 2021 – 25<sup>th</sup> May, 12:30-13:45 - <a href="https://www.eventbrite.co.uk/e/250120606467">https://www.eventbrite.co.uk/e/250120606467</a></a></li> <li>• <a href="#">Emerging models in diabetes – 14<sup>th</sup> June, 12:30-13:30 - <a href="https://www.eventbrite.co.uk/e/250128078817">https://www.eventbrite.co.uk/e/250128078817</a></a></li> <li>• <a href="#">Supporting families and children through VGCs – 13<sup>th</sup> July, 12:30-13:30 - <a href="https://www.eventbrite.co.uk/e/250133545167">https://www.eventbrite.co.uk/e/250133545167</a></a></li> <li>• <a href="#">Wound care - ConvaTec Events   Eventbrite</a></li> <li>• <a href="#">Algorithm to diagnosis and management of adult knee problems</a></li> </ul> |
| e-Learning for Health        | <ul style="list-style-type: none"> <li>• <a href="#">New elearning session highlights dermatological side effects of COVID-19</a></li> <li>• <a href="#">New COVID-19 community contact tracing programme now available</a></li> <li>• <a href="#">Staff Recovery Resources for critical care and the wider health workforce recovering from the COVID-19 pandemic</a></li> <li>• <a href="#">MindEd infographic highlights programme's success during COVID-19</a></li> <li>• <a href="#">Long COVID elearning session available</a></li> <li>• <a href="#">The Changing Story of Cancer programme</a></li> <li>• <a href="#">Updates to the Flu Immunisation elearning programme for the 2021/22 flu season</a></li> <li>• <a href="#">Flu Immunisation programme - elearning</a></li> <li>• <a href="#">Foundation elearning programme update September 2021</a></li> <li>• <a href="#">Virtual wards enabled by technology - elearning for healthcare (e-lfh.org.uk)</a></li> </ul>   |

*Continuation of Free Training / Webinars / Meetings / CPD*

|                |   |
|----------------|---|
| YouTube        | <ul style="list-style-type: none"> <li>• <a href="#">NHS England</a></li> <li>• <a href="#">Black Country Healthcare - YouTube</a></li> </ul>   |
| Blogs/Vlogs    | <ul style="list-style-type: none"> <li>• <a href="#">An increase in Hepatitis Cases in Children - UK Health Security Agency (blog.gov.uk)</a></li> <li>• <a href="#">UKHSA'S weekly surveillance report: focusing on 'Pillar 1' data - UK Health Security Agency (blog.gov.uk)</a></li> <li>• <a href="#">What is Lyme disease, and why do we need to be tick aware? - UK Health Security Agency (blog.gov.uk)</a></li> <li>• <a href="#">What to do if you have symptoms of a respiratory infection including COVID-19, or a positive COVID-19 test - UK Health Security Agency (blog.gov.uk)</a></li> <li>• <a href="#">London's communities remain vulnerable to COVID-19 without full vaccine protection - UK Health Security Agency</a></li> <li>• <a href="#">How science can protect us from the health effects of climate change - UK Health Security Agency</a></li> <li>• <a href="#">Thunderstorm asthma and public health – looking back to move forward - UK Health Security Agency</a></li> <li>• <a href="#">Taking the sting out of new and emerging health threats - UK Health Security Agency</a></li> </ul>                    |
| Area Bulletins |   |
| Free to RCN    | <ul style="list-style-type: none"> <li>• 31 May - <a href="#">RCN Worcestershire branch meeting (in-person event - no online facility)</a></li> <li>• 13 June - <a href="#">RCN South Staffordshire Learning Event: Factors involved for the smooth introduction of criteria-led discharge from hospital</a></li> <li>• 22 June - <a href="#">RCN North Staffordshire Learning Event: Respiratory updates – current trends in community respiratory care</a></li> <li>• 20 July - <a href="#">RCN North Staffordshire Learning Event: Factors involved for the smooth introduction of criteria-led discharge from hospital</a></li> <li>• 1 Aug - <a href="#">RCN Birmingham East, North and Solihull Learning Event: Transgender awareness - adapting your practice to support transgender patients and service users</a></li> <li>• 10 Aug - <a href="#">RCN Birmingham East, North and Solihull branch meeting</a></li> <li>• <a href="#">RCN England NHS Pensions Update webinar 25 May   Royal College of Nursing</a></li> <li>• <a href="#">NVEMAY22 - Immunisation, CVD and Respiratory - NIP 365 (nursinginpractice365.uk)</a></li> </ul> |

*Continuation of Free Training / Webinars / Meetings / CPD*

|          |  |
|----------|--|
| Podcasts | <ul style="list-style-type: none"> <li>• <a href="#">The Nursing Handover Podcast</a></li> <li>• <a href="#">Nursing Standard Podcasts</a></li> <li>• <a href="#">What Makes a Nurse?</a></li> <li>• <a href="#">The MedicsPro Podcast</a></li> <li>• <a href="#">Nursing Matters</a></li> <li>• <a href="#">Welcome to the BJN Podcast</a></li> <li>• <a href="#">Why we care</a></li> <li>• <a href="#">EBN podcast</a></li> <li>• <a href="#">This Is Nursing</a></li> <li>• <a href="#">Maroon Mindset</a></li> <li>• <a href="#">Teach me, I'm a Nurse</a></li> <li>• <a href="#">Past Caring</a></li> <li>• <a href="#">RCGP eLearning podcast</a></li> <li>• <a href="#">The BMJ Podcast</a></li> <li>• <a href="#">Primary Care Network podcasts</a></li> <li>• <a href="#">The Professional Support Unit's Pandemic Podcast</a></li> <li>• <a href="#">How can public health nurses help deliver the Healthy Child Programme this winter?</a></li> <li>• <a href="#">Talking GP</a></li> <li>• <a href="#">Podcast – Matthew Winn – ICS Incoming.... Primary Care and Community Trusts</a></li> <li>• <a href="#">NB Hot Topics Podcast</a></li> <li>• <a href="#">Podcast: Will the rising cost of living be paid for by our health? (healthfdn.org.uk)</a></li> <li>• <a href="#">Lovegrove on Health - Podcast episode #4 - Skills for Health</a></li> <li>• <a href="#">Latest podcast episodes from GPnotebook (mailchi.mp)</a></li> </ul> |
| Research | <ul style="list-style-type: none"> <li>• <a href="#">Science Daily</a></li> <li>• <a href="#">Multimorbidity / multiple long-term conditions (MLTC)</a></li> <li>• <a href="#">Funding bodies launch consultation on future research assessment</a></li> <li>• <a href="#">Results of Research Excellence Framework are published – UKRI</a></li> <li>• <a href="#">Leading UK research facilities to move closer to net zero – UKRI</a></li> </ul>  |
| Freebies | <ul style="list-style-type: none"> <li>• <a href="#">Blue Light Card</a></li> </ul>  |
| Other    |  |



Thank you for reading Future Proof Health's weekly news!

If you missed past issues, please click [here](#) to view them

More information can be found on our website, [here](#)

Don't forget to like us on [Facebook](#) & Follow us on [Twitter](#)

