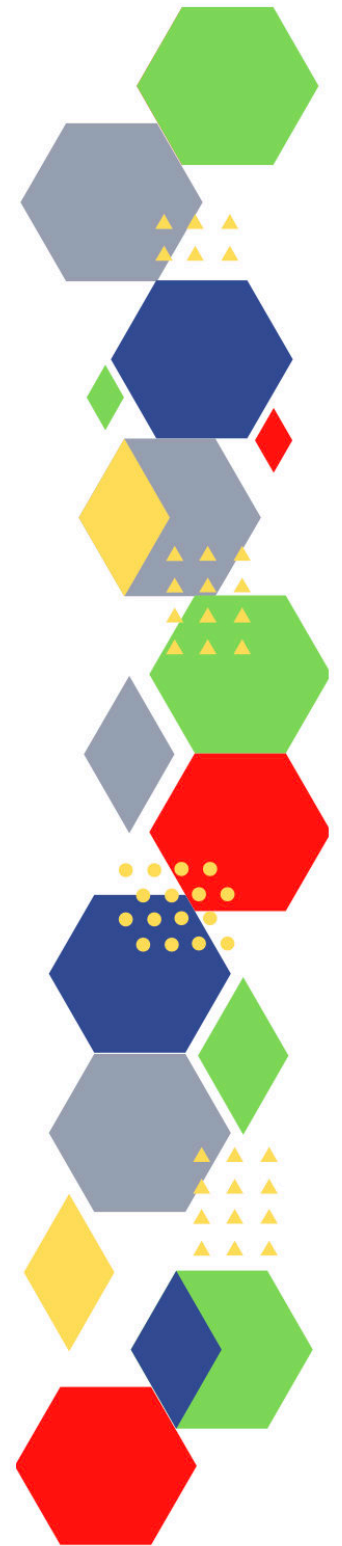




Future Proof Health Presents

Weekly News

14th November 2022



Communication	
Communication with Patients	<ul style="list-style-type: none"> • Resources and guidance are also available to help practices communicate with patients (cmail20.com) • Our plan for improving access for patients and supporting general practice (england.nhs.uk) • Staff respect (createsend1.com) • NHS General Practice Team Campaign Resource Centre (createsend1.com)
Communication within Teams	
Consent	<ul style="list-style-type: none"> • Gillick competency and Fraser guidelines • ReSPECT for healthcare professionals
People and Personal Development	
Personal / People Development / Leadership	<ul style="list-style-type: none"> • Accountability and delegation in practice • NHS Leadership Academy (createsend1.com) • Mary Seacole (createsend1.com) • Rosalind Franklin (createsend1.com)
NHS Employers / HR / NHS Pension	<ul style="list-style-type: none"> • NHS Employers • Pensions Online • Why stick with the scheme? (rcn.org.uk)
Health, Safety & Security	
	<ul style="list-style-type: none"> • NPSA • Control of Substances Hazardous to Health (COSHH) • Weekly Digest Newsletter: 2 November 2022 (govdelivery.com) • Weekly Digest Newsletter: 10 November 2022 (govdelivery.com)
Gov UK - NHS	
CQC	<ul style="list-style-type: none"> • GP mythbusters • v CQC update for primary medical and dental services (govdelivery.com) • State of Care 2021/22 - Care Quality Commission (cqc.org.uk) • Supporting safe care and encouraging innovation this winter - Care Quality Commission (cqc.org.uk) • CQC's new regulatory model (govdelivery.com) • GP mythbuster 108: Involving and engaging with the patient population and local communities - Care Quality Commission (cqc.org.uk) • GP mythbuster 87: Freedom to Speak Up - Care Quality Commission (cqc.org.uk) • Culturally Appropriate Care (skillsforcare.org.uk) • Update on how CQC is changing (govdelivery.com) • CQC is changing: Upcoming webinar series (govdelivery.com)

MIMS	<ul style="list-style-type: none"> • Prescribing Update
Antibiotic steward-ship / Anti-microbial resistance	<ul style="list-style-type: none"> • Antibiotic awareness toolkit launched MIMS online • Combatting antibiotic resistance (independentnurse.co.uk)
Health Protection Review	
Drug / Device Alerts (MHRA)	<ul style="list-style-type: none"> • Drug Safety Update (mhradrugsafety.org.uk)
Emergency Situations	<ul style="list-style-type: none"> • Resuscitation Council UK
Infection Control / Infection Statics	<ul style="list-style-type: none"> • NHS England » National infection prevention and control • infection prevention control (IPC) guidelines (createsend1.com) • IPC face covering resources for NHS settings (updated September 2021) - Coronavirus Resource centre (phe.gov.uk)
Vaccines / Medications / Prescribing	<ul style="list-style-type: none"> • Protocol for ordering, storing and handling vaccines • A Competency Framework for all Prescribers • Non-medical prescribing • The Human Medicines Regulations 2012 • RCN - Non-medical prescribers • Royal Pharmaceutical Society • Standards for prescribing • Clinical Negligence Scheme for General Practice • Home - electronic medicines compendium (emc) • Drug shortages - live tracker MIMS online • Developing a support pathway for non-medical prescribers in primary care (cogora.com) • Latest expert views: Medicines Management (campaign-archive.com)
Safe Guarding	<ul style="list-style-type: none"> • Female genital mutilation (FGM) • PREVENT • Child protection system in the UK • Safeguarding Adults • Safeguarding children: detailed information • Domestic abuse victim services, England and Wales: 2022 (www.gov.uk) • Dudley Financial Abuse Alliance - September 2022 (govdelivery.com) • Wolverhampton Safeguarding Together • Walsall Safe Guarding Training • Wolverhampton Safeguarding Together - Training Update October 2022

Practice Policies: Practice Management / Accountability Duty of Candour	<ul style="list-style-type: none"> • The Duty of Candour in Healthcare Forum 2022 (insidegovernment.co.uk) • Developing Effective Written Responses to Complaints in Healthcare (moderngov.com)
Audit	
Information Governance / Record Keeping	<ul style="list-style-type: none"> • Guide to Data Protection • Supporting general practice – Medical record keeping • PRSB standards now easier to use • An update from NHS England on Accelerating Citizen Access to GP Data (1 November 2022) - NHS Digital • General practice readiness checklist - NHS Digital
Quality & Service Improvement	
Quality, Service & Improvement	<ul style="list-style-type: none"> • The PRSB • General Practice Assessment Questionnaire (GPAQ) • Healthwatch • NHS Five Year Forward View • General Practice Forward View • NMC • Dr Jon Griffiths Blog • NHS Confed
Roles in General Practice Including AHP	<ul style="list-style-type: none"> • Standards for nursing associates • GP mythbuster 57: Health Care Assistants in General Practice • NHS England » Allied Health Professions • NHS General Practice Team Campaign Resource Centre (phe.gov.uk) • Health and Well-being Coaching Have Your Say!
Revalidation	
Personal Practice & Development	
Practice Management	<ul style="list-style-type: none"> • Institute of General Practice Management • Practice Index • Home - NHS Resolution
EMIS / System One	<ul style="list-style-type: none"> • Engage Check-in issue after recent EMIS updates

Recruitment Employment / Retirement / Legacy Nursing	<ul style="list-style-type: none"> • Home · Primary Care Workforce Portal • Understanding Early Exiters Demos
NHS Self Care & Resilience	<ul style="list-style-type: none"> • Samaritans • Mental Health at work • Calm • Supporting our NHS people • The Hub :: Black Country Healthcare NHS Foundation Trust • How to manage menopause symptoms RCN Magazines Royal College of Nursing • Flourishing in unity: Loneliness, health and nurse burnout (independentnurse.co.uk)
Practice Transformation / Innovation Agency	<ul style="list-style-type: none"> • Ask Your Pharmacist Week 2022 - NPA » NPA
Future of NHS / General Practice / NHS Recovery	<ul style="list-style-type: none"> • NHS England • NHS England » Primary care • NHS mandate 2022 to 2023 • 'The future of general practice' report: what you need to know NHS Confederation • The General Medical Services Statement of Financial Entitlements (Amendment) (No. 5) Directions 2022 (publishing.service.gov.uk) • Our Plan for Patients (createsend1.com) • Appointments in General Practice publication (createsend1.com) • practice level dashboard. (createsend1.com) • Primary care premises not fit for purpose (independentnurse.co.uk)
ICS / ICB / ICP / PCN Commissioning	<ul style="list-style-type: none"> • Integrated care (england.nhs.uk)
QOF / PHOF / DES / LES / NHS Contract / CQRS / CQUIN	<ul style="list-style-type: none"> • NHS England » GP Contract • Important Message from the ICB • NHS England » Network Contract Directed Enhanced Service: guidance for 2022/23 in England

Leadership / Innovation	<ul style="list-style-type: none"> • Leadership Academy
Greener NHS	<ul style="list-style-type: none"> • Greener Allied Health Professional hub (england.nhs.uk) • Leading Sustainability in Health and Social Care - YouTube
Personalised Care	
Personalised Care / Self Care / Social Prescribing / Health Coaching	<ul style="list-style-type: none"> • Self Care forum • Personalised Care Institute • Personalised care • Social Prescribing Academy • Self Care Forum Newsletter November - SCW Assets (mailchi.mp) • Self Care Week - Last minute activity ideas (mailchi.mp) • Self Care Forum Newsletter November - SCW Assets (mailchi.mp) • Free App for nurses launches during Self Care Week (mailchi.mp) • What's in the news? (mailchi.mp)
Group consultation	
Working Differently	
Shared Decision Making	<ul style="list-style-type: none"> • Personalised Care Institute
Equality & Diversity	
Equality & Diversity	<ul style="list-style-type: none"> • Public Health Profiles
Inclusion Health	<ul style="list-style-type: none"> • Health Creation Academic Network • Inequality on the inside
Poverty / Homelessness	<ul style="list-style-type: none"> • Crisis • This is Poverty
Population Health / Health Communities	<ul style="list-style-type: none"> • Population health: joining the dots and recognising the opportunities The King's Fund (kingsfund.org.uk) • THCA Creating community spaces for patient and community wellbeing_October 22 (property.nhs.uk) • GP mythbuster 108: Involving and engaging with the patient population and local communities - Care Quality Commission (cqc.org.uk) • Wider Determinants of Health: November 2022 update - GOV.UK (www.gov.uk)

Thrive Into Work	<ul style="list-style-type: none"> • Thrive into Work • Thrive into Work Referral form • NICE and health inequalities What we do About NICE • Segment tool: November 2022 data update - GOV.UK (www.gov.uk) • Health inequalities portal (office.com)
Health Inequalities	<ul style="list-style-type: none"> • NHS News • Health disparities and health inequalities: applying All Our Health - GOV.UK (www.gov.uk) • NICE and health inequalities What we do About NICE
Trans / Non-binary Health / LGBTQ+	<ul style="list-style-type: none"> • LGBT Foundation • Surgery staff grab sheet (squarespace.com) • Trans inclusive organisations — TransActual • TransActual - Healthcare • CliniQ • LGBTQ+ equality in medicine (bma.org.uk) • Sexual orientation and gender identity in the medical profession • Culturally Appropriate Care (skillsforcare.org.uk)
Migrant / Refugee Health	<ul style="list-style-type: none"> • THE REFUGEE & MIGRANT CENTRE • Lost in translation: the value of professional interpreters (cogora.com) • Culturally Appropriate Care (skillsforcare.org.uk)
Traveller / Gypsy / Romany Health	<ul style="list-style-type: none"> • Gypsy Roma and Traveller History and Culture The Traveller Movement • Friends, Families and Travellers (gypsy-traveller.org)
Veterans Health	<ul style="list-style-type: none"> • The first call for help takes courage • apply for the RCGP's Veteran Friendly accreditation (createsend1.com)
Voluntary / Charity	<ul style="list-style-type: none"> • Together Coalition - Together • BREAKING NEWS from The Carer (ourmailsender4.com)
Management of Emergency Situations	
Management of Emergency Situations	
111 / Emergency Care	<ul style="list-style-type: none"> • Why have ambulance waiting times been getting worse? - The Health Foundation

First Contact	<ul style="list-style-type: none"> • Supporting general practice – Common pitfalls • Paediatrics for Primary Care (and anyone else) (gppaedstips.blogspot.com)
Red Flags	
Sepsis	<ul style="list-style-type: none"> • Sepsis: recognition, diagnosis and early management • Sepsis guidance implementation advice for adults • Sepsis in Children • Sepsis Trust • quick SEPSIS RELATED ORGAN FAILURE ASSESSMENT • What nurses need to know about sepsis, and how to act (independentnurse.co.uk)
Therapeutic Monitoring	
OSCE	<ul style="list-style-type: none"> • Geeky Medics • Abdominal Examination - Demonstration - YouTube • Cardiovascular Examination - Demonstration - YouTube • Respiratory Examination - Demonstration - YouTube • Physical Diagnosis Skills - University of Washington School of Medicine
Role Specific	
Cervical Cytology	<ul style="list-style-type: none"> • Guide to the interim assessment • British Association for Cytopathology • Lab Tests Online • Cytology Newsletter
Ear Care	<ul style="list-style-type: none"> • Ear Care Centre • RNID
Wound Management / Compression	<ul style="list-style-type: none"> • Microworld • Tissue Viability Society • The BLS • Pressure Ulcers and Management - Wounds on Thursday - Webinar series Tickets, Multiple Dates Eventbrite • Cohort study evaluating the burden of wounds to the UK's National Health Service in 2017/2018: update from 2012/2013 - PubMed (nih.gov) • HARTMANN Wound Care • JWC Conference - Registrations now open (mahealthcareevents.co.uk) • Skin tears: Classification, assessment and management • Transforming outcomes with a Leg Ulcer Pathway • Spotlight on managing chronic wounds (bjfm.co.uk) • New data on the burden of wounds to the NHS 2017/2018 - TVN-TV (tvntv.co.uk) • Lower-Limb-Recommendations-WEB-25Feb21.pdf (nationalwoundcarestrategy.net)

Minor Surgery	
Obtaining Samples / Results	<ul style="list-style-type: none"> • Lab Tests Online • PCR on Poo
Health Promotion / Health Screening	
Health Promotion / Population Health	<ul style="list-style-type: none"> • Better Health • SHAPE Strategic Health Asset Planning and Evaluation (shapeatlas.net)
Health Screening	<ul style="list-style-type: none"> • PHE Screening
PHE / OHID / UKHSA	<ul style="list-style-type: none"> • Knowledge & Library Services • Campaign Resources • Public Health Profiles • Health Publications • Health Profile for England 2021 • English indices of deprivation 2019 • NHS England » Delivering a quality public health function in integrated care boards • Public Health Outcomes Framework: November 2022 data update - GOV.UK (www.gov.uk)
NHS Health Check	<ul style="list-style-type: none"> • NHS Health Check
UK GOV Flu / Covid / Bird Flu	<ul style="list-style-type: none"> • Coronavirus (Covid-19) infection survey, antibody data, UK: 2 November 2022 (outlook.com) • Prevalence of ongoing symptoms following coronavirus (COVID-19) infection in the UK: 3 November 2022 - Office for National Statistics (ons.gov.uk) • National flu and Covid-19 surveillance report: 3 November 2022 (week 44), UK Health Security Agency, 3 November 2022 (outlook.com)
UK GOV - General Practice	
UK GOV - Secondary Care	
UK GOV Deaths / Suicide / Palliative Care	<ul style="list-style-type: none"> • Suicide prevention profile updates - GOV.UK (www.gov.uk) • Segment tool: November 2022 data update - GOV.UK (www.gov.uk) • Palliative and end of life care profiles: November 2022 data update, Office for Health Improvement and Disparities, 1 November 2022 (outlook.com)

UK GOV - LTC	
Surveillance / Syndromic Surveillance	<ul style="list-style-type: none"> • Syndromic surveillance: systems and analyses - GOV.UK (www.gov.uk)
UK GOV Infectious Disease Monitoring / NOIDS	<ul style="list-style-type: none"> • C. difficile infection: monthly data by prior trust exposure and NHS organisation, from September 2021 to September 2022, UK Health Security Agency, 2 November 2022 (outlook.com) • National norovirus and rotavirus report, week 44 report: data up to week 42 (23 October 2022), UK Health Security Agency, 3 November 2022 (outlook.com)
UK GOV - Mental Health	
Addiction/Smoking	<ul style="list-style-type: none"> • Drink Coach • Stop smoking interventions and services
Immunisation / Travel Health	
<ul style="list-style-type: none"> • Joint Committee on Vaccination and Immunisation • Immunisation against infectious disease • West Midlands Immunisation Service • Vaccination of individuals with uncertain or incomplete immunisation status • Immunisation Queries: Immunisation information for Health Care Services within the West Midlands area • Immunisation • free resources. (createsend1.com) 	
Flu	<ul style="list-style-type: none"> • Flu and flu vaccinations • The national influenza immunisation programme 2021 to 2022 • Flu vaccines for the 2021 to 2022 season poster • Appendix C: Flu vaccinator competency assessment tool • Healthcare assistants and flu vaccinations

<i>Continuation of Immunisation / Travel Health</i>	
Covid Vaccine	<ul style="list-style-type: none"> • Greenbook COVID-19 chapter 14a • COVID-19 Vaccine Moderna e-learning now available • GP COVID-19 vaccine dashboard • Updates made to the COVID-19 vaccination learning programme • New vaccine marketing campaign urges millions to boost their immunity this winter - GOV.UK (www.gov.uk) • NHS England » NHS protects more than half of those due Autumn booster
Children	
Adults	<ul style="list-style-type: none"> • Immunisation patient group direction (PGD) templates • Shingles immunisation programme: introduction of Shingrix® letter
Vaccine Update	<ul style="list-style-type: none"> • Vaccine update: issue 331, August 2022 - GOV.UK (www.gov.uk) • Vaccine update: issue 329, May 2022 - GOV.UK (www.gov.uk) • Vaccine update: issue 328, May 2022, Shingrix® special edition - GOV.UK (www.gov.uk) • Vaccine update: issue 327, May 2022, SCID, TB and BCG special edition (www.gov.uk) • Vaccine update: issue 326, April 2022, HPV special edition - GOV.UK (www.gov.uk) • Vaccine update: issue 325, April 2022, flu special edition - GOV.UK (www.gov.uk)
PGD	<ul style="list-style-type: none"> • Hib/MenC: patient group direction (PGD) template - GOV.UK (www.gov.uk)
Travel Health	<ul style="list-style-type: none"> • Travel Health Pro • Fit for Travel • Travel Health • Jane Chiodini • Corona.Help

Mental Health / Learning Disability / Disability	
Mental Health	<ul style="list-style-type: none"> • Mental Health • Mental Health UK • Mind • Place2b • Rethink Mental Illness • Young Minds • Every Mind Matters • Calm • Headspace • Better Health - Every Mind Matters - Resources • ZSA Training • NHS > Mental Health • A working partnership: A guide to developing integrated statutory and voluntary sector mental health services • Thematic Report on Mental Health
Learning Disability	<ul style="list-style-type: none"> • Learning Disabilities • Learning Disability England • Mencap • Bild • Autism • Mythbuster: 'Autism rarely affects girls – she's probably just anxious' (cogora.com) • HEE launches Oliver McGowan mandatory learning disability and autism training (cogora.com) • The Oliver McGowan Mandatory Training on Learning Disability and Autism e-learning (createsend1.com) • NHS England » Supporting children and young people with mental health needs in acute paediatric settings • Best practice in annual health checks for people with a learning disability (October) (createsend1.com)
Disability (Inc. hearing and visual)	<ul style="list-style-type: none"> • Disability Rights UK • Disability Matters • RNID - National hearing loss charity • Spokzpeople • Sight Loss Data Tool RNIB • Sound Magazine Boots Hearingcare

From Cradle to...

<p>Infant Health</p>	<ul style="list-style-type: none"> • Tommys • First Steps Nutrition Trust • Bliss • ICON Toolkit • Sandwell - 7 Minute Briefing - ICON within Primary Care • Walsall - Sleep Awareness • Toilet Training • Understanding your child's behaviour • Understanding your child's emotions • Breastfeeding at six to eight weeks after birth: annual data 2021 to 2022, Office for Health Improvement and Disparities, 1 November 2022 (outlook.com)
<p>Child Health</p>	<ul style="list-style-type: none"> • Unicef • Health Professional Academy • Premature Babies • Child and Maternal Health • Women and Child First • Child Health Information Services • Place2b • Childhood eczema • Childhood asthma • Paediatrics for Primary Care (and anyone else) (gppaedstips.blogspot.com) • Urinary tract infections in children: A guide for primary care nurses (independentnurse.co.uk) • NHS England » Supporting children and young people with mental health needs in acute paediatric settings • Digital CBT for children with anxiety given conditional green light MIMS online • NICE conditionally recommends digital cognitive behaviour therapies for use in the NHS to help children and young people with symptoms of mild to moderate anxiety News News NICE • Child development outcomes at two to two and a half years, 2021 to 2022, Office for Health Improvement and Disparities, 1 November 2022 (outlook.com)
<p>Adolescent Health</p>	<ul style="list-style-type: none"> • Adolescent Health Programme • Society for Adolescent Health and Medicine • Young Minds • Commission on Young Lives

<p>Mens Health</p>	<ul style="list-style-type: none"> • Mens Health Forum • Mens Health Month • Mens health.org • Mens Health UK • Men and mental health • Men's Mental Health Awareness • Prostate Cancer UK • Orchid Fighting Male Cancer • Prostate Cancer UK Facebook Page • Movember • FREE New Prostate Cancer and PSA Test CPD Module • NHS England » NHS prostate cancer treatments surge in England
<p>Women's Health</p>	<ul style="list-style-type: none"> • Womens Health Concern • Well Being of Women • Coppa Feel • Menopause Matters • The Menopause Charity • Royal College of Obstetricians and Gynaecologists - Guidelines • Pelvic Partnership • CRUK - Womens Cancer • Breast Cancer Now • Foundation for Women's Cancer • Eve Appeal • Ovarian.Org • Jo's Trust • Well Spring • Know your Lemons • British Menopause Society - <u>www.thebms.org.uk</u> • NHS - www.nhs.uk/conditions/menopause • Henpicked - henpicked.net • The Menopause Exchange - www.menopause-exchange.co.uk • Women's Health Concerns - www.womens-health-concern.org • Menopause Matters - www.menopausematters.co.uk • The Daisy Network - www.daisynetwork.org • Dr Louise Newson's Menopause Doctor - www.menopausedoctor.co.uk • Manage My Menopause - www.managemymenopause.co.uk/menopause-advice • Menopause Support - menopausesupport.co.uk • Target Ovarian Cancer Pathfinder 2022 • CPD module: Diagnosis and management of endometriosis (cogora.com)

The Older Population	<ul style="list-style-type: none"> • BGS • Ageing Better • Delirium Champions - YouTube
Carers / Social Care / Care Homes	<ul style="list-style-type: none"> • The Care Provider Alliance • Skills for Care • The Care Workers' Charity • Supporting Adult Carers • The Care UK • See the resources (phe.gov.uk) • BREAKING NEWS from The Carer (ourmailsender4.com) • Adult social care monthly statistics, England: November 2022, Department of Health and Social Care, 3 November 2022 (outlook.com) • Read Issue 122 of The Carer Digital Now! (ourmailsender4.com) • new online resources to proactively engaging carers in routine appointments (createsend1.com) •
Young Carers	
Complex Needs	
Family Planning & Sexual Health	
Family Planning	<ul style="list-style-type: none"> • Faculty of Sexual and Reproductive Healthcare Education and Training
Reproductive	<ul style="list-style-type: none"> • Tommys
Sexual Health / Sexual Abuse	<ul style="list-style-type: none"> • Sexual and Reproductive Health Profiles • FSRH Education & Training • Towards Zero - An action plan towards ending HIV transmission, AIDS and HIV-related deaths in England - 2022 to 2025 - GOV.UK (www.gov.uk)
Maternity / Neonate health	<ul style="list-style-type: none"> • CPD module: Diabetes in pregnancy – the primary care role (cogora.com)

Care of Patients with Long Term Conditions	
LTC	<ul style="list-style-type: none"> • Physical Activity for the Prevention and Management of Long-Term Conditions • Health A to Z
Diabetes & Pre-Diabetes	<ul style="list-style-type: none"> • Mumoactive • The mySugr App • PCDS Entry level module series - Foot Check • Type 2 diabetes in adults: management • CPD module: Diabetes in pregnancy – the primary care role (cogora.com) • The Role Of Second-generation Basal Insulins And CGM In Optimising Glycaemic Control: The InRange Study (Promotional Content From Sanofi) - GPnotebook Podcast • The management of patients with CKD and Type 2 Diabetes (vimeo.com)
Respiratory	<ul style="list-style-type: none"> • Spirometry: step by step • ARTP • British Lung Foundation • The Primary Care Respiratory Society • Respiratory – Respimat® patient resources Boehringer Ingelheim (boehringer-ingelheim.com) • Respiratory News & Advice (nursinginpractice.com) • Dudley pulmonary rehab - Template PI (dgft.nhs.uk)
COPD	<ul style="list-style-type: none"> • Right Breathe • GOLD COPD 2022 strategy Independent professional body guideline Guidelines
Asthma	<ul style="list-style-type: none"> • Asthma UK • Asthma: diagnosis, monitoring and chronic asthma management • Global Initiative for Asthma • British guideline on the diagnosis and pharmacological management of asthma in children
Hypertension	<ul style="list-style-type: none"> • British Heart Foundation • Blood Pressure UK • Hypertension in adults: diagnosis and management • Hypertension in adults: diagnosis and treatment • Hypertension: symptoms to look out for and treatment options (rcni.com)

Continuation of Long Term Conditions

CVD/AF	<ul style="list-style-type: none"> • QRISK®3-2018 risk calculator • Heart Rhythm Alliance • CVD risk assessment and management • NHS lipid management pathway NHS guideline Guidelines
Heart Failure	<ul style="list-style-type: none"> • British Heart Foundation • British Society Guidelines
Cancer / Oncology	<ul style="list-style-type: none"> • Surviving Thyroid Cancer • Help Us Help You - Lung Cancer Symptoms • Breast Cancer Now • Macmillian • Bowel Cancer UK • Brain Trust • CRUK • Action Cancer • Foundation for Women's Cancer • NHS England » Cancer • NHS England » NHS prostate cancer treatments surge in England • NHS England » NHS strikes deal for potentially life-saving breast cancer drug • Highest level of early cancer diagnosis on record (independentnurse.co.uk)
Chronic Kidney Disease	<ul style="list-style-type: none"> • Kidney.Org • Kidney Quality Improvement Partnership
Liver Disease	<ul style="list-style-type: none"> • British Liver Trust • Liver Research • BRITISH ASSOCIATION FOR THE STUDY OF THE LIVER • LIVERNORTH • LIVER DISEASE AND CIRRHOSIS

Continuation of Long Term Conditions

Blood Disorders	<ul style="list-style-type: none"> • Blood Cancer UK • UK Thalassaemia Society • The ITP Support Association • UK-ITP Paediatric ITP Registry • The Haemophilia Society • UK MDS Forum • Pernicious Anaemia Society • Haemochromatosis UK
G.I	<ul style="list-style-type: none"> • GIST Cancer UK • Pernicious Anaemia Society • Gastrointestinal Nursing Conference - Programme (mahealthcareevents.co.uk)
ENT	
G.U	
ME / CFS / Fibromyalgia	<ul style="list-style-type: none"> • ME Association • ME Research • Action for M.E • Fibromyalgia Action UK • Fibromyalgia UK • Home - Fibromyalgia Awareness UK (fibroawarenessuk.org) • Fibromyalgia - Symptoms, diagnosis and treatment BMJ Best Practice • Fibromyalgia - The Brain Charity
Neurological Conditions	<ul style="list-style-type: none"> • The Brain Tumour Charity • Narcolepsy.Org • ACNR • MS Society UK Information, research and support Multiple Sclerosis Society UK • Home MS Trust

Continuation of Long Term Conditions

<p>Musculoskeletal Conditions</p>	<ul style="list-style-type: none"> • Rheumatology • National Axial Spondyloarthritis Society • Musculoskeletal health • Musculoskeletal health: 5 year prevention strategic framework • Faculty of Occupational Medicine • Guide to embedding your first contact physiotherapy service
<p>Endocrine Disorders / Metabolic Disorders</p>	<ul style="list-style-type: none"> • Society for Endocrinology • Turner Syndrome Support Society • Thyroid Eye Disease • British Thyroid Foundation • Thyroid UK • The Pituitary Foundation • Addisons Disease • Parathyroid UK • The Royal Osteoporosis Society • Metabolic Support UK
<p>Frailty</p>	<ul style="list-style-type: none"> • Recognising frailty • Identifying frailty • CLINICAL FRAILTY SCALE
<p>Dementia / Alzheimers</p>	<ul style="list-style-type: none"> • Dementia UK • Age UK - Understanding Dementia • Delirium Champions • Alzheimers Society • NHS England policy template 3 - dementia • The role of the nurse in screening people with suspected dementia (independentnurse.co.uk)

Continuation of Long Term Conditions

Dermatology	<ul style="list-style-type: none"> • British Association of Dermatologists • Eczema • The British Skin Foundation • Acne vulgaris: management • The Primary Care Dermatology Society • Acne.org • Allergy UK • Urticaria • Hives • Sunburn • Causes of cancer and reducing your risk • What is Rosacea? • Rosecea • The Rosacea Forum • Herpes Viruses Association • Shingles • Fungal Skin Infection - Foot • The Psoriasis Association • National Psoriasis Foundation • Melanoma • Skin Health Information • British Association of Plastic Reconstructive and Aesthetic Surgeons - Procedure Guides • Warts and verrucae • Pigmented skin changes - Registration (gotowebinar.com)
Allergy / Auto-immune / Genetic Conditions	<ul style="list-style-type: none"> • Allergy UK • British Society for Rheumatology • Addisons Disease

<i>Continuation of Long Term Conditions</i>	
Obesity	<ul style="list-style-type: none"> • Obesity UK
Pain Management	<ul style="list-style-type: none"> • Pain Concern
Osteoporosis / Falls	
Genomics	<ul style="list-style-type: none"> • HEE extends online genomics tool to advanced nurse practitioners in general practice Nursing in Practice (cogora.com) • GeNotes: Genomic notes for clinicians GEP Health Education England NHS (hee.nhs.uk) • HEE extends new educational resource to GPs Health Education England
Multi-Morbidity	<ul style="list-style-type: none"> • Multimorbidity • Multimorbidity / multiple long-term conditions (MLTC)
Minor Illness / First Contact Assessment / OSCE	<ul style="list-style-type: none"> • Fact Sheets - Self Care Forum • OSCE Checklists 📄 (mlsend.com) • OSCE Flashcards 🩺 (mlsend.com) • 600+ OSCE Stations ✨ (mlsend.com) • Anatomy Flashcards 🫁 (mlsend.com) • Health A to Z • Symptoms - Nursing in Practice Reference • Urinary tract infections in children: A guide for primary care nurses (independentnurse.co.uk) • Here to simplify symptom checking for busy nurses
Other / Case Studies	
Winter / Summer Pressures	<ul style="list-style-type: none"> • Nurses prepare for a tough winter ahead (cogora.com)
End of Life Care	
End of Life Care / Bereavement	<ul style="list-style-type: none"> • ReSPECT for healthcare professionals • Hospice UK
Flu / Covid-19 / Monkeypox	
Covid-19	<ul style="list-style-type: none"> • COVID-19: notification to GPs and NHS England to share information - GOV.UK (www.gov.uk)

Flu	
Long Covid	<ul style="list-style-type: none"> • Supporting your recovery after COVID-19 • Long Covid Toolkit • Long term effects of COVID (Long COVID) • Post-COVID Syndrome (Long COVID) • COVID-19 Yorkshire Rehabilitation Screening Tool • FOM Guidance • Prevalence of ongoing symptoms following coronavirus (COVID-19) infection in the UK: 3 November 2022 - Office for National Statistics (ons.gov.uk) • QNI Publishes New Resource for Nurses Supporting those with Long Covid in the Community – The Queen's Nursing Institute
Monkeypox	
News & Views	
Digital News / Remote Consultations	<ul style="list-style-type: none"> • Digital Health News Webinars • Digital Health News • NHS Digital • DigiHealthWell • Public Sector Events, Conferences and Training - Inside Government • Digital Transformation • Latest expert views: Medicines Management (campaign-archive.com) • Your daily news updates from Digital Health (campaign-archive.com) • Digital Health News - 3 November 2022 (mailchi.mp) • Digital Health Digest - 4 November 2022 (mailchi.mp)
Pulse / GP Online / HSJ / NB Medical	<ul style="list-style-type: none"> • GP Online • HSJ • Pulse Today
PSNC News / Pharmacy	<ul style="list-style-type: none"> • National Pharmacy Association • Royal Pharmaceutical Society • Medicines Learning Portal • Specialist Pharmacy Service • PSNC Newsletter: 2nd November (mailchi.mp)

<i>Continuation of News & Views</i>	
Primary Care Update / PCC / PPP	<ul style="list-style-type: none"> • Public Policy Projects News • Primary Care Bulletin
Proactive Care	
Health Care Leaders Newsletters	
Kings Fund	<ul style="list-style-type: none"> • The Kings Fund • Your events update November 2022 (kingsfundmail.org.uk) • Read the briefing (outlook.com) • Activism, community and the NHS (kingsfundmail.org.uk)
World Health Organisation	<ul style="list-style-type: none"> • WHO • OpenWHO
IHCT / CCG / STP / Healthier Futures	<ul style="list-style-type: none"> • Black Country & West Birmingham CCG • Dudley Integrated Health and Care • Home :: Black Country Healthcare NHS Foundation Trust • Issue 16 - Black Country Primary Care Brief (sharepoint.com) • Issue 15 - Black Country Primary Care Brief (sharepoint.com) • Issue 14 - Black Country Primary Care Brief (sharepoint.com) • Issue 13 - Black Country Primary Care Brief (sharepoint.com) • Issue 12 - Black Country Primary Care Brief (sharepoint.com) • Issue 11 - Black Country Primary Care Brief (sharepoint.com) • Issue 10 - Black Country Primary Care Brief (sharepoint.com) • Issue 09 - Black Country primary Care Brief (sharepoint.com) • Updated: UKHSA - Urgent public health message regarding Ebola virus outbreak in Uganda and IPC guidance (sharepoint.com) • Message from Mark Axcell & Staff News (20 October 2022) (sharepoint.com) • Staff News
NHSI / NHSE	
University / Student Nurses	
Nurse Guidelines	
The Health Care Leaders Update	<ul style="list-style-type: none"> • Health Care Leader News

Continuation of News & Views

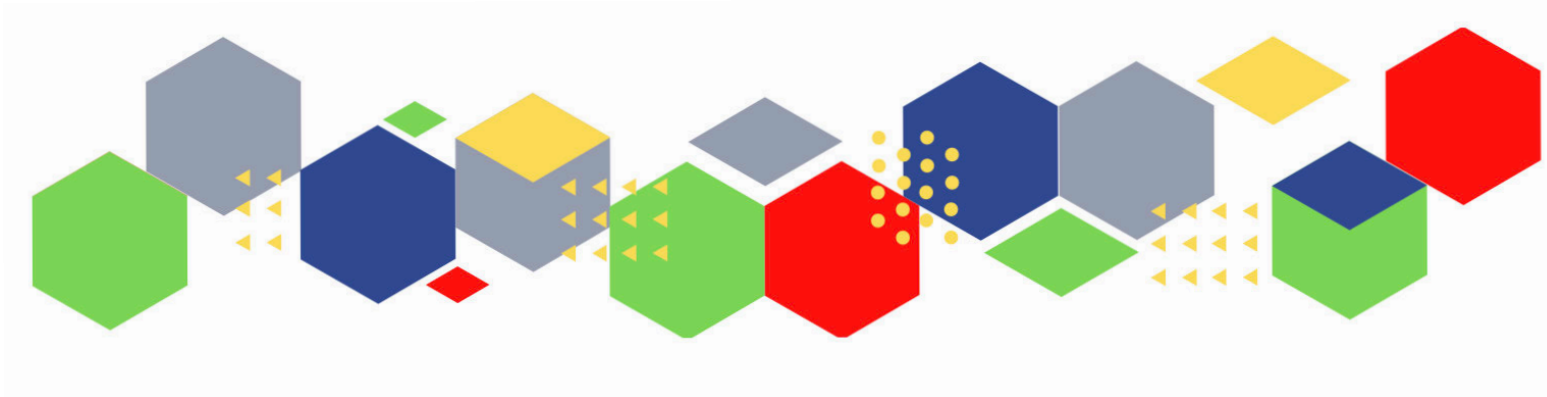
<p>Medisa / Univadis / Geeky Medics / GP Notebook / Medscape</p>	<ul style="list-style-type: none"> • Medisa • Geeky Medics • Medscape Nurses • GP Notebook • 👉 Don't miss these new Study Group sessions on Women's Health, Safe Steroid Prescribing and More! (mailchi.mp) • I'm really struggling with hot flushes and brain fog, but I don't want to take HRT because my mum had breast cancer (mailchi.mp)
<p>The Health Foundation</p>	<ul style="list-style-type: none"> • The Health Foundation • Why have ambulance waiting times been getting worse? - The Health Foundation
<p>Practice Index</p>	
<p>Innovation Agency</p>	<ul style="list-style-type: none"> • Innovation Agency Exchange • November 2022 newsletter (mailchi.mp)
<p>RCN</p>	<ul style="list-style-type: none"> • RCN • RCN Magazines Royal College of Nursing
<p>Nursing in Practice / Nursing Standard / Independent Nurse</p>	<ul style="list-style-type: none"> • Nursing Times • Practice Nursing - Explore our brand new website • Journal of General Practice Nursing • Nursing Bulletin • Independent Nurse News
<p>QNI</p>	<ul style="list-style-type: none"> • QNI • Talk To Us @ – The Queen's Nursing Institute (qni.org.uk) • QNI Publishes New Resource for Nurses Supporting those with Long Covid in the Community – The Queen's Nursing Institute
<p>NMC</p>	<ul style="list-style-type: none"> • NMC • NMC may consider viability of protecting ANP title, says Andrea Sutcliffe (cogora.com)

CMO / CNO	
Nice	<ul style="list-style-type: none"> • NICE • NICE conditionally recommends digital cognitive behaviour therapies for use in the NHS to help children and young people with symptoms of mild to moderate anxiety News News NICE
RCGP / BMA / The Lancet	<ul style="list-style-type: none"> • The Lancet • British Medical Journal • Royal College of General Practitioners
Midlands Academic Health Science Network	<ul style="list-style-type: none"> • WMAHSN Network
Healthwatch	<ul style="list-style-type: none"> • Healthwatch
Other	<ul style="list-style-type: none"> • Patients Association
Free Training / Webinars / Meetings / CPD	
Development / Information and Knowledge	<ul style="list-style-type: none"> • Red Whale Training • Issues & Answers • Issues & Answers - Long Covid Broadcasts • Physical Health Care For Severe Mental Illness Maudsley Learning • Health is wealth? REAL Challenge annual lecture - 9 November 2022 (healthfdn.org.uk) • Lymphoedema Conference - Registration now open (mahealthcareevents.co.uk) • 1 and 29 November, 12.30pm – 2pm. Safe, Reliable Processes I and II • 16 November, 10.30am – 12pm. Supporting our NHS people to reach out and help create a civil and respectful work culture • 16 November, 2pm – 3pm. Wellbeing Wednesday: Winter Wellness • 16 November, 7pm – 8pm. The future of primary care • 24 November, 10am – 4pm. #StartWithPeople virtual event • 29 November, 12.30pm – 2pm. Safe, Reliable Processes I and II • Watch our series of General Practice webinars • Watch our series of Primary Care Network webinars

Free to RCN	<ul style="list-style-type: none"> • RCNi events RCNi • RCN Shropshire AGM and learning event Event Royal College of Nursing • RCN Birmingham East, North and Solihull AGM and learning event Event Royal College of Nursing
MIMMs Learning	
Eventbrite	
e-Learning for Health	
Podcasts	<ul style="list-style-type: none"> • The Nursing Handover Podcast • Nursing Standard Podcasts • Nursing Matters • Welcome to the BJN Podcast • Cygnet Health Care Podcast • EBN podcast • This Is Nursing • Teach me, I'm a Nurse • Past Caring • RCGP eLearning podcast • The BMJ Podcast • Primary Care Network podcasts • The Professional Support Unit's Pandemic Podcast • The Next GenCast • New podcast: Stafford Scott on community activism (kingsfundmail.org.uk) • The Role Of Second-generation Basal Insulins And CGM In Optimising Glycaemic Control: The InRange Study (Promotional Content From Sanofi) - GPnotebook Podcast
YouTube	<ul style="list-style-type: none"> • NHS England • Black Country Healthcare - YouTube
Future Proof Health Training	<ul style="list-style-type: none"> • Training

Continuation of Free Training / Webinars / Meetings / CPD

Blogs/Vlogs	<ul style="list-style-type: none"> • How the NHS App has helped relieve pressure in my pharmacy team - NHS Digital • Austerity 2.0: why it's critical for our health that the government learns the lessons of Austerity 1.0 The King's Fund (kingsfund.org.uk)
BCWB Training Hub	
Evidence based care	
Area Bulletins	
Research	<ul style="list-style-type: none"> • Science Daily • Multimorbidity / multiple long-term conditions (MLTC) • National Institute for Health and Care Research
Freebies	<ul style="list-style-type: none"> • Blue Light Card
Campagne Links	
Other	



Thank you for reading Future Proof Health's weekly news!

If you missed past issues, please click [here](#) to view them

More information can be found on our website, [here](#)

Don't forget to like us on [Facebook](#) & Follow us on [Twitter](#)

