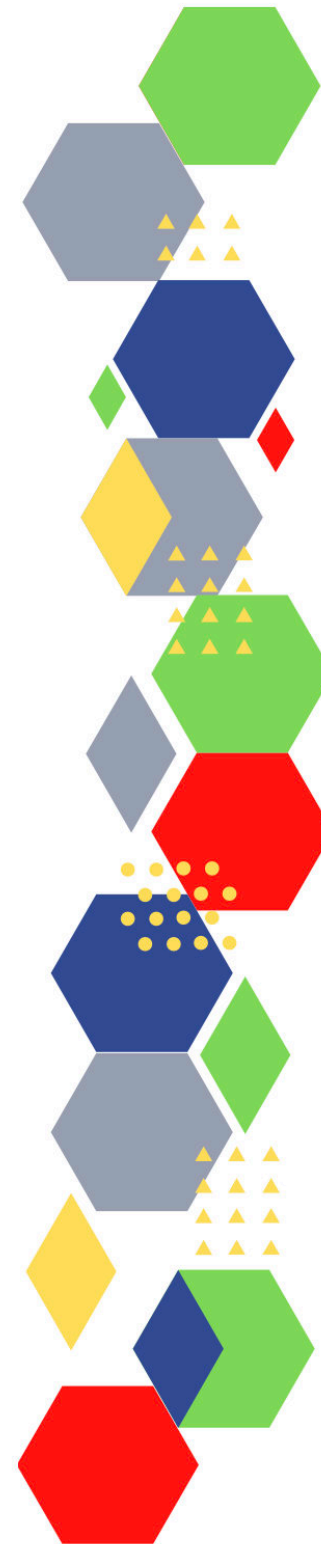


FutureProof**Health**
Delivering tomorrow's healthcare



Future Proof Health Presents

Weekly News

23rd February 2022

Communication	
Communication with Patients	Campaign Resource Centre
Communication within Teams	
Consent	<ul style="list-style-type: none"> • Gillick competency and Fraser guidelines • CONSENT POLICY • ReSPECT for healthcare professionals
People and Personal Development	
Personal / People Development / Leadership	<ul style="list-style-type: none"> • Accountability and delegation in practice
NHS Employers / HR / NHS Pension	<ul style="list-style-type: none"> • NHS Employers • Pensions Online
Health, Safety & Security	
	<ul style="list-style-type: none"> • NPSA • Control of Substances Hazardous to Health (COSHH) • HSE Weekly Digest eBulletin
Gov UK - NHS	
CQC	<ul style="list-style-type: none"> • GP mythbusters • Examples of outstanding practice for GPs
Vaccines / Medications / Prescribing	<ul style="list-style-type: none"> • Protocol for ordering, storing and handling vaccines • A Competency Framework for all Prescribers • Non-medical prescribing • The Human Medicines Regulations 2012 • RCN - Non-medical prescribers • Royal Pharmaceutical Society • Standards for prescribing • Clinical Negligence Scheme for General Practice • Hydroxychloroquine or chloroquine, in combination with macrolide antibiotics: review of epidemiological data for cardiovascular safety

MIMS	<ul style="list-style-type: none"> • Prescribing Update
Antibiotic steward-ship / Anti-microbial resistance	
Drug / Device Alerts (MHRA)	<ul style="list-style-type: none"> • Book today: GPvP Symposium, 10-11 March 2022
Emergency Situations	<ul style="list-style-type: none"> • The updated National Early Warning Score and its use with suspected Sepsis • Resuscitation Council UK
Infection Control / Infection Statics	
Safe Guarding	<ul style="list-style-type: none"> • Female genital mutilation (FGM) • PREVENT • Child protection system in the UK • Safeguarding Adults • Safeguarding children: detailed information • Safeguarding children needs proper resources • Identifying and responding to sexual assault and abuse – a reminder of our responsibilities and how the NHS is addressing this • Key Messages from Walsall Safeguarding Partnership
Practice Policies	<ul style="list-style-type: none"> • GP Appointments Data Dashboard - NHS Digital • PPA Manager - YouTube
Audit	
Information Governance / Record Keeping	<ul style="list-style-type: none"> • Guide to Data Protection • Supporting general practice – Medical record keeping • Survey: Help the NHS Transformation Directorate join up IT systems in health and social care
Quality & Service Improvement	
Quality, Service & Improvement	<ul style="list-style-type: none"> • The PRSB • General Practice Assessment Questionnaire (GPAQ) • Healthwatch • NHS Five Year Forward View • General Practice Forward View • NMC • Dr Jon Griffiths • NHS Confed

Roles in General Practice	<ul style="list-style-type: none"> • Standards for nursing associates • GP mythbuster 57: Health Care Assistants in General Practice • Developing your social prescribing workforce and making the most of social prescribing ARRS roles
Revalidation	
Personal Practice & Development	<ul style="list-style-type: none"> • Apprenticeships in Primary and Social Care Information Pack
Practice Management	<ul style="list-style-type: none"> • Institute of General Practice Management • Practice Index • Consultation on removing vaccination as a condition of deployment for health and social care staff
NHS Self Care & Resilience	<ul style="list-style-type: none"> • Samaritans • Mental Health at work • Calm • Supporting our NHS people • Workforce burnout and resilience in the NHS and social care
Practice Transformation	
Future of NHS / General Practice	<ul style="list-style-type: none"> • Elective recovery plan: what you need to know • The long goodbye? Exploring rates of staff leaving the NHS and social care • Coronavirus » Next steps for general practice following the accelerated COVID-19 vaccination booster campaign • Coronavirus » Delivery plan for tackling the COVID-19 backlog of elective care
ICS / PCN	
QOF / PHOF / DES / LES	
Leadership	<ul style="list-style-type: none"> • Leadership Academy

Personalised Care	
Personalised Care / Self Care / Social Prescribing / Health Coaching	<ul style="list-style-type: none"> • Self Care forum • Personalised Care Institute • Personalised care • Social Prescribing Academy • My Planned Care Patient Platform
Group consultation	
Working Differently	
Equality & Diversity	
Equality & Diversity	<ul style="list-style-type: none"> • Public Health Profiles
Inclusion Health	<ul style="list-style-type: none"> • Health Creation Academic Network
Poverty / Homelessness	<ul style="list-style-type: none"> • Crisis • This is Poverty
Population Health	
Thrive Into Work	<ul style="list-style-type: none"> • Thrive into Work • Thrive into Work Referral form
Health Inequalities	<ul style="list-style-type: none"> • Royal College of Nursing responds to NHS Race and Health Observatory report on ethnic health inequalities
Trans / Non-binary Health / LGBTQ+	<ul style="list-style-type: none"> • LGBT Foundation • NHS population screening: information for trans and non-binary people • Cervical screening for trans men and/or non-binary people • DOMESTIC ABUSE BOARD AND SEXUAL ASSAULT AND ABUSE BOARD • BMA Mail
Migrant / Refugee Health	<ul style="list-style-type: none"> • THE REFUGEE & MIGRANT CENTRE
Traveller / Gypsy / Romany Health	
Veterans Health	<ul style="list-style-type: none"> • The first call for help takes courage

Management of Emergency Situations	
Management of Emergency Situations	<ul style="list-style-type: none"> • The updated National Early Warning Score and its use with suspected Sepsis
111	
Red Flags	<ul style="list-style-type: none"> • Supporting general practice – Common pitfalls
Sepsis	<ul style="list-style-type: none"> • Sepsis: recognition, diagnosis and early management • Sepsis guidance implementation advice for adults • Sepsis in Children • Sepsis Trust • RCGP: Sepsis • quick SEPSIS RELATED ORGAN FAILURE ASSESSMENT
Therapeutic Monitoring	
OSCE	<ul style="list-style-type: none"> • Geeky Medics • Abdominal Examination - Demonstration - YouTube • Cardiovascular Examination - Demonstration - YouTube • Respiratory Examination - Demonstration - YouTube • Physical Diagnosis Skills - University of Washington School of Medicine
Role Specific	
Cervical Cytology	<ul style="list-style-type: none"> • Guide to the interim assessment • British Association for Cytopathology • Lab Tests Online
Ear Care	<ul style="list-style-type: none"> • Ear Care Centre • RNID • The health and social care approach to winter
Wound Management	<ul style="list-style-type: none"> • Microworld • Tissue Viability Society • Best Practice, Leadership, Support • A JWC Masterclass on Bovine Dermal Scaffolds
Minor Surgery	
Obtaining Samples / Results	<ul style="list-style-type: none"> • Lab Tests Online

Health Promotion / Health Screening	
Health Promotion / Population Health	<ul style="list-style-type: none"> • Better Health • EXi App
Health Screening	<ul style="list-style-type: none"> • PHE Screening • Learning Disability Annual Health Checks PCN Local Incentive Scheme 2021/22
PHE/OHID	<ul style="list-style-type: none"> • Knowledge & Library Services • Campaign Resources • Public Health Profiles • Health Publications • Health Profile for England 2021
NHS Health Check	<ul style="list-style-type: none"> • NHS Health Check
NOIDS / PHE Surveillance / Syndromic Surveillance	<ul style="list-style-type: none"> • Notifications of infectious diseases (NOIDs) • National norovirus and rotavirus bulletins 2021 to 2022: management information • Pneumococcal disease: cases caused by strains covered by PCV13 • Pneumococcal disease: caused by strains in PCV13 and not in PCV7 • Pneumococcal disease caused by strains not covered by PCV13 • ISARIC4C and CO-CIN: Co-infection with influenza viruses associated with worse outcomes in severe COVID-19, 7 February 2022
Addiction/Smoking	<ul style="list-style-type: none"> • Drink Coach • Stop smoking interventions and services
Immunisation / Travel Health	
<ul style="list-style-type: none"> • Vaccinations and infections • Joint Committee on Vaccination and Immunisation • Immunisation against infectious disease • West Midlands Immunisation Service • Immunisation information for Health Care Services within the West Midlands area • Vaccination of individuals with uncertain or incomplete immunisation status • WHO vaccine-preventable diseases: monitoring system. 2020 global summary • The Foundations of Immunization: What, Who, When and Why? • Winter Vaccination - Prime phase: Social Media content calendar and assets - 2021 • Helping to tackle vaccine hesitancy • Shingles in adults: what the practice nurse needs to know • UK Government awards £10 million for vaccines research to combat potential epidemics in developing countries 	

<i>Continuation of Immunisation / Travel Health</i>	
Flu	<ul style="list-style-type: none"> • Flu and flu vaccinations • The national influenza immunisation programme 2021 to 2022 • Flu vaccines for the 2021 to 2022 season poster • Appendix C: Flu vaccinator competency assessment tool • Healthcare assistants and flu vaccinations • Flu Campaign Resources 2021/22
Covid Vaccine	<ul style="list-style-type: none"> • Greenbook COVID-19 chapter 14a • Updates made to the COVID-19 vaccination elearning programme • HEE e-LfH COVID-19 vaccination programme launches hit 2 million • COVID-19 Vaccine Moderna e-learning now available • GP COVID-19 vaccine dashboard • COVID-19 vaccine weekly surveillance reports (weeks 39 to 7, 2021 to 2022) • Coronavirus (COVID-19) vaccines adverse reactions • Therapy dog sessions and a mini toy town help kids grab a jab at half term • Cover of vaccination evaluated rapidly (COVER) programme: annual data
Children	<ul style="list-style-type: none"> • JCVI update on advice for COVID-19 vaccination of children aged 5 to 11
Adults	<ul style="list-style-type: none"> • Immunisation patient group direction (PGD) templates • Shingles immunisation programme: introduction of Shingrix® letter
Vaccine Update	<ul style="list-style-type: none"> • Vaccine update • Vaccine Update Index
PGD	
Travel Health	<ul style="list-style-type: none"> • Travel Health Pro • Fit for Travel • Travel Health • Jane Chiodini • Corona.Help

Mental Health / Learning Disability / Disability	
Mental Health	<ul style="list-style-type: none"> • Mental Health • Mental Health UK • Mind • Place2b • Rethink Mental Illness • Young Minds • Every Mind Matters • Calm • Headspace • We Can Talk • Get Your Mind Plan • Feeling low? • Better Health - Every Mind Matters - Resources • ZSA Training • CPD module: Recognising and managing self-harm in teenage children • Medscape Psychiatry
Learning Disability	<ul style="list-style-type: none"> • Learning Disabilities • Learning Disability England • Mencap • Bild • Autism • Children and young people keyworkers • Easy read letter: health checks • Learning Disability Annual Health Checks PCN Local Incentive Scheme 2021/22
Disability	<ul style="list-style-type: none"> • Disability Rights UK • Disability Matters • Physical activity in disabled children and disabled young people: evidence review • Physical activity guidelines for disabled children and disabled young people: methodology • Personal Health Budgets: Quarter 3 2021-22

From Cradle to...

<p>Infant Health</p>	<ul style="list-style-type: none"> • Tommys • First Steps Nutrition Trust • Bliss • NHS App - Baby Buddy • NHS App - Peanut • ICON Toolkit
<p>Child Health</p>	<ul style="list-style-type: none"> • Unicef • Health Professional Academy • Premature Babies • Child and Maternal Health • Women and Child First • Child Health Information Services • Place2b • Childhood eczema • Childhood asthma • Childrens Commissioner - The Big Answer • Suicide in Children and Young People • Under 16 Cancer Experience Survey • Babies, children and young people's experience of healthcare • Spotlight on the Early Years • Improvements seen in children and young people's wellbeing • State of the Nation Children and Young People's Wellbeing • Paediatric focus from GPn • Help stop the spread of chickenpox • Physical activity in disabled children and disabled young people: evidence review • Children's Mental Health Week
<p>Adolescent Health</p>	<ul style="list-style-type: none"> • Adolescent Health Programme • Society for Adolescent Health and Medicine • Young Minds • Adolescents

<p>Mens Health</p>	<ul style="list-style-type: none"> • Mens Health Forum • Mens Health Month • Mens health.org • Mens Health UK • Men and mental health • Men's Mental Health Awareness • Prostate Cancer UK • Orchid Fighting Male Cancer • Prostate Cancer UK Facebook Page • Men's Voices Event • Movember • NHS England » Supporting male victims/survivors accessing a sexual assault referral centre: good practice guide • Risk campaign Prostate Cancer UK
<p>Women's Health</p>	<ul style="list-style-type: none"> • Womens Health Concern • Well Being of Women • Coppa Feel • Menopause Matters • The Menopause Charity • Royal College of Obstetricians and Gynaecologists - Guidelines • Pelvic Partnership • CRUK - Womens Cancer • Breast Cancer Now • Foundation for Women's Cancer • Eve Appeal • Ovarian.Org • Jo's Trust • Well Spring • New test using cervical screening samples can detect risk of four cancers in women • Oral Metronidazole vs Intravaginal Lactic Acid Gel for Bacterial Vaginosis • Fast Five Quiz: Red Flags for Breast Cancer
<p>The Older Population</p>	<ul style="list-style-type: none"> • BGS • Ageing Better

Carers / Social Care / Care Homes	<ul style="list-style-type: none"> • The Care Provider Alliance • Skills for Care • The Care Workers' Charity • Supporting Adult Carers
Young Carers	
Complex Needs	
Family Planning & Sexual Health	
Family Planning	<ul style="list-style-type: none"> • Faculty of Sexual and Reproductive Healthcare Education and Training
Reproductive	<ul style="list-style-type: none"> • Tommys
Sexual Health / Sexual Abuse	<ul style="list-style-type: none"> • Sexual and Reproductive Health Profiles • FSRH Education & Training • HIV Testing, Prevention, and Treatment: A Stepwise Approach • Identifying and responding to sexual assault and abuse – a reminder of our responsibilities and how the NHS is addressing this
Maternity / Neonate health	
Care of Patients with Long Term Conditions	
LTC	<ul style="list-style-type: none"> • Chronic Conditions On Demand
Diabetes & Pre-Diabetes	<ul style="list-style-type: none"> • AZ Medical and Educational Goods and Services in Diabetes • Mumoactive • The mySugr App • Foot Check • Resources - Journal of General Practice Nursing • Module 2 - Diabetes and Emotional Wellbeing • Updates in diabetes from GPnotebook • Ramadan - implications for patients with type 2 diabetes • Update to NG28. Type 2 diabetes guidelines - what's new? • Black Country and West Birmingham NHS LCD Oviva GP engagement pack • NHS Low Calorie Diet Programme Overview • Would you like free support to put your diabetes into remission? • Black Country and West Birmingham NHS Low Calorie Diet Programme Oviva GP Email

Continuation of Long Term Conditions

<p><i>Continuation of Diabetes & Pre-Diabetes</i></p>	<ul style="list-style-type: none"> • Black Country and West Birmingham Low Calorie Diets invite letter from GP practice • Black Country and West Birmingham NHS Low Calorie Diet Programme Oviva GP FAQs • Mid and South Essex NHS LCD Pilot Oviva Participant Flyer GP referral • Diabetes Diagnosis and Management webinar: now available to watch on demand for free
<p>Respiratory</p>	<ul style="list-style-type: none"> • Spirometry: step by step • ARTP • British Lung Foundation • The Primary Care Respiratory Society
<p>COPD</p>	<ul style="list-style-type: none"> • Right Breathe
<p>Asthma</p>	<ul style="list-style-type: none"> • FeNO - Fractional exhaled nitric oxide - for the diagnosis and management of Asthma • Asthma UK • Asthma: diagnosis, monitoring and chronic asthma management • GINA 2021: the missing pieces in the childhood asthma puzzle • GINA: Interim Guidance About COVID-19 & Asthma • NHS Accelerated Access Collaborative » Asthma Biologics – Rapid Uptake Product • Educational resources - Oxford Academic Health Science Network • Identification and Management of Severe Asthma • Achieve asthma control for your patients • NHS Rapid Uptake Webinars 2022
<p>Hypertension</p>	<ul style="list-style-type: none"> • British Heart Foundation • Blood Pressure UK • Hypertension in adults: diagnosis and management • Hypertension in adults: diagnosis and treatment
<p>CVD/AF</p>	<ul style="list-style-type: none"> • QRISK®3-2018 risk calculator • Heart Rhythm Alliance • CVD risk assessment and management • Health matters: preventing cardiovascular disease • NICE impact cardiovascular disease prevention • PCSK9 Inhibitors: Which Patients Experience CV and LDL-C Benefits?

Continuation of Long Term Conditions

Heart Failure	<ul style="list-style-type: none"> • British Heart Foundation • British Society Guidelines
Cancer / Oncology	<ul style="list-style-type: none"> • Surviving Thyroid Cancer • Help Us Help You - Lung Cancer Symptoms • Becca Breast Cancer Support App • Breast Cancer Now • MoleCare App • Macmillian • Aspirin and reduction of cancer risk • Macmillan Support Line Referrals • Oncology - Medscape
Chronic Kidney Disease	<ul style="list-style-type: none"> • Kidney.Org • Kidney Quality Improvement Partnership
Liver Disease	<ul style="list-style-type: none"> • British Liver Trust • Liver Research • BRITISH ASSOCIATION FOR THE STUDY OF THE LIVER • LIVERnORTH • LIVER DISEASE AND CIRRHOSIS
Blood Disorders	<ul style="list-style-type: none"> • Blood Cancer • Thalassaemia • ITP • Haemophilia • UK MDS Forum • Save a life. Give plasma. • Diagnosis and management of pernicious anaemia • GPnotebook focus on haematology
G.I	<ul style="list-style-type: none"> • GIST Cancer UK
ENT	
G.U	

Continuation of Long Term Conditions

Neurological Conditions	<ul style="list-style-type: none"> • The Brain Tumour Charity • Narcolepsy.Org • ACNR • Neurology • High-Efficacy Therapies in MS: How Early Should We Be Using Them?
Musculoskeletal Conditions	<ul style="list-style-type: none"> • Rheumatology • National Axial Spondyloarthritis Society • Musculoskeletal health • Musculoskeletal health: 5 year prevention strategic framework • Faculty of Occupational Medicine
Endocrine Disorders / Metabolic Disorders	<ul style="list-style-type: none"> • Endocrinology • Turner Syndrome Support Society • Thyroid Eye Disease • British Thyroid Foundation • Thyroid UK • Pituitary • Addisons Disease • Parathyroid UK • The Royal Osteoporosis Society • Metabolic Support UK
Frailty	<ul style="list-style-type: none"> • Recognising frailty • Identifying frailty • CLINICAL FRAILTY SCALE
Dementia	<ul style="list-style-type: none"> • Dementia UK • Understanding dementia • My House of Memories - NHS App • Dementia profile updates • Caring for Carers Dementia Support Group (Tuesdays) • Delirium Champions • Dementia Support Services in Wolverhampton December 2021

Continuation of Long Term Conditions

Dermatology	<ul style="list-style-type: none"> • British Association of Dermatologists • Eczema • The British Skin Foundation • Acne vulgaris: management • The Primary Care Dermatology Society • Acne.org • Allergy UK • Urticaria • Hives • Sunburn • Causes of cancer and reducing your risk • What is Rosacea? • Rosecea • Herpes.org • Shingles • Fungal Skin Infection - Foot • The Psoriasis Association • Psoriasis • Melanoma • Skin Health Information • British Association of Plastic Reconstructive and Aesthetic Surgeons • Warts and verrucae
Allergy / Auto-immune / Genetic Conditions	<ul style="list-style-type: none"> • Allergy UK • Rheumatology • Addisons Disease • Vitamin D and marine omega 3 fatty acid supplementation and incident autoimmune disease
Obesity	<ul style="list-style-type: none"> • Obesity UK
Pain Management	<ul style="list-style-type: none"> • Pain Concern • UK career framework for pain nurses
Genomics	

<i>Continuation of Long Term Conditions</i>	
Multi-Morbidity	<ul style="list-style-type: none"> • Multimorbidity • Multimorbidity / multiple long-term conditions (MLTC)
Minor Illness / First Contact Assessment	
Other / Case Studies	<ul style="list-style-type: none"> • Ultra Rare Disease Disorders And Disabilities Foundation • MyCognition Home - NHS App • The Cold Weather Plan for England • Fast Five Quiz: Vitamin D Practice Essentials
End of Life Care	
End of Life Care	<ul style="list-style-type: none"> • ReSPECT for healthcare professionals • Hospice UK
Covid-19	
Covid-19	<ul style="list-style-type: none"> • Covid Live • Coronavirus Statistics • Coronavirus » Letter to general practices: deployment of COVID-19 treatments for highest risk non-hospitalised patients • Coronavirus (COVID-19) Infection Survey, UK: characteristics of people testing positive for COVID-19, 16 February 2022 • Infection prevention and control for seasonal respiratory infections in health and care settings (including SARS-CoV-2) for winter 2021 to 2022 • Fit testing face masks to avoid transmission during the coronavirus (COVID-19) pandemic
Long Covid	<ul style="list-style-type: none"> • Supporting your recovery after COVID-19 • Long Covid Toolkit • Long term effects of COVID (Long COVID) • Post-COVID Syndrome (Long COVID) • COVID-19 Yorkshire Rehabilitation Screening Tool • FOM Guidance • Supporting colleagues affected by Long COVID
Covid Response / Recovery	

News & Views	
Digital News / Remote Consultations	<ul style="list-style-type: none"> • Digital Health News Webinars • Digital Health News • Digital Health Rewired - 15th - 16th March • Driving Patient Communication and Engagement Using Accessible Digital Tools • NHS Digital • Digital and remote primary care: the inverse care law with a 21st century twist?
PSNC News / Pharmacy	<ul style="list-style-type: none"> • National Pharmacy Association • Royal Pharmaceutical Society • PSNC Concessions Announcement • 18th February • 21st February
60 Second GP / Pulse / GP Online / HSJ / NB Medical	<ul style="list-style-type: none"> • 60 Second GP • GP Online • HSJ • Pulse Today
Primary Care Update / PCC / PPP	<ul style="list-style-type: none"> • Primary Care Bulletin • Public Policy Projects News
Practice Index	<ul style="list-style-type: none"> • Practice Index Weekly
Kings Fund	<ul style="list-style-type: none"> • The Kings Fund • Weekly News / Health Management and Policy Alert / Health and Well Being Bulletin / Digital Health Digest • Ideas that change health and care
IHCT / CCG / STP / Healthier Futures	<ul style="list-style-type: none"> • Healthier Futures • Black Country & West Birmingham CCG • Dudley Integrated Health and Care
NHSI / NHSE	
University / Student Nurses	

<i>Continuation News & Views</i>	
Medisa / Univadis / Geeky Medics / GP Notebook / Medscape	<ul style="list-style-type: none"> • Univadis Newsletter • Univadis Nurses Headlines • Medisa • Geeky Medics • Medscape Nurses • GP Notebook • Latest UK Medical News & NHS Guidelines - Medscape UK
The Health Foundation	<ul style="list-style-type: none"> • The Health Foundation • Learning from international health care system responses to COVID-19 - 24th February
The Health Care Leaders Update	<ul style="list-style-type: none"> • Health Care Leader News • Update
Innovation Agency	<ul style="list-style-type: none"> • Innovation Agency Exchange
RCN	<ul style="list-style-type: none"> • RCN • Shaping solutions for nursing with governments across the UK • Raising concerns about PPE • COVID-19 (coronavirus) FAQs • Nursing staff must be protected as COVID-19 restrictions in England set to end • NHS pension contribution changes: RCN demands clear explanation of impact on members • Government announces extension of NHS pension benefits for retired workers following RCN pressure • Royal College of Nursing responds to NHS Race and Health Observatory report on ethnic health inequalities • Making surgery successful • Keeping safe under pressure • Current RCN elections and appointments

<i>Continuation News & Views</i>	
Nursing in Practice / Nursing Standard / Independent Nurse	<ul style="list-style-type: none"> • Nursing Times • Nursing in Practice Clinical • Nursing in Practice Bulletin • GPN Bulletin • Independent Nurse Magazine • Practice Nursing • Practice Nursing Highlights
QNI	<ul style="list-style-type: none"> • QNI • Upcoming Events
NMC	<ul style="list-style-type: none"> • NMC
CMO / CNO	<ul style="list-style-type: none"> • Chief Nursing Officer for England's strategic plan for research
World Health Organisation	<ul style="list-style-type: none"> • WHO • OpenWHO
Nice	<ul style="list-style-type: none"> • NICE
RCGP / BMA / The Lancet	<ul style="list-style-type: none"> • The Lancet • British Medical Journal • Royal College of General Practitioners • QOF QI hub • BMA Update • RCGP News Updates • FREE eLearning on cardiorenal metabolic (CRM) medicine • LGBTQ+ history month racism survey results what do you think of NHS IT?
Midlands Academic Health Science Network	<ul style="list-style-type: none"> • WMAHSN Network • The AHSN Newsletter
Healthwatch	<ul style="list-style-type: none"> • Healthwatch
Other	

Free Training / Webinars / Meetings / CPD	
e-Learning for Health	<ul style="list-style-type: none"> • New elearning session highlights dermatological side effects of COVID-19 • New COVID-19 community contact tracing programme now available • Staff Recovery Resources for critical care and the wider health workforce recovering from the COVID-19 pandemic • MindEd infographic highlights programme's success during COVID-19 • Long COVID elearning session available • The Changing Story of Cancer programme • Updates to the Flu Immunisation elearning programme for the 2021/22 flu season • Flu Immunisation programme - elearning • Foundation elearning programme update September 2021
Eventbrite	<ul style="list-style-type: none"> • Understanding Mental Health To Better Understand Young People And You • What's Stress Costing You? Take Health Beyond Conventional Medicine-Birming Tickets, Multiple Dates • Wounds on Thursdays
YouTube	<ul style="list-style-type: none"> • NHS England
Blogs/Vlogs	
Area Bulletins	
BCWB Training Hub	<ul style="list-style-type: none"> • Black Country and West Birmingham Training Hub

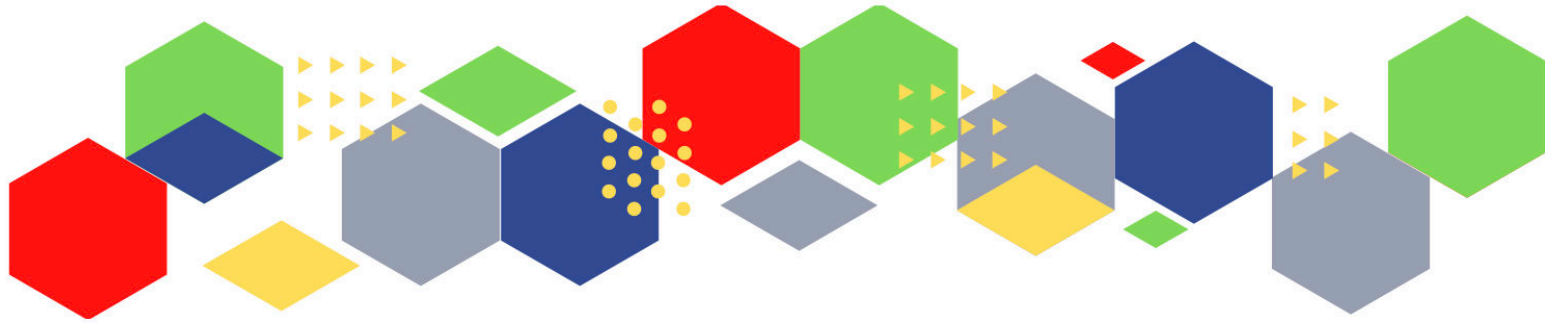
Continuation of Free Training / Webinars / Meetings / CPD

Development / Information and Knowledge

- [FutureProof Health Training & Events](#)
- [RCN Events - West Midlands](#)
- [Inaugural Broadcasts 2021](#)
- [24th March 2022 - RCN Clinical Research Nursing Conference 2022](#)
- [Menopause Training](#)
- [RCGP Learning](#)
- [Deep Dive on DPP-4 Inhibitors](#)
- [Bringing people together to share knowledge - Virtual Conferences](#)
- [ADVANCE CARE PLANNING](#)
- [IDENTIFYING & MANAGING A DYING PATIENT](#)
- [Monthly RCGP Post-Covid Syndrome \(Long Covid\) Training Session](#)
- [FREE eLearning on influenza](#)
- [Guidelines Live](#)
- [Thrive in Life: Enjoying Post Cancer Happiness - Birmingham Tickets, Multiple Dates | Eventbrite](#)
- [Senior Mental Health Lead Training](#)
- [Celebrating World Diabetes Day - Living with Diabetes Q&A Webinar](#)
- [Ask Marc Launch Event](#)
- [GP Notebook Study Groups](#)
- [Time for Care Programme/Access Improvement Programme](#)
- [Adult Social Care Forum 2022 - 9th - 10th March](#)
- [Updated programme at PCN Live - view the new talks and register now - 14th March](#)
- [A JWC Masterclass on Bovine Dermal Scaffolds](#)
- [Digital Nursing Summit | Secure your place](#)
- [Primary Care Update Bulletin – 10/02/2022](#)
- [West Midlands MARAC and Housing and Homelessness: Better Connected Tickets, Wed 23 Mar 2022 at 13:00](#)
- [WM MARAC and Disability, Mental Health and Older Persons: Better Connected Tickets, Thu 10 Mar 2022 at 13:00](#)
- [Primary Care Nursing Live](#)
- [Cardiovascular Masterclass Series - Password: CVM2022](#)
- [PCN and Practice Manager Development Programme](#)

Continuation of Free Training / Webinars / Meetings / CPD

Podcasts	<ul style="list-style-type: none"> • The Nursing Handover Podcast • Nursing Standard Podcasts • What Makes a Nurse? • The MedicsPro Podcast • Nursing Matters • Welcome to the BJN Podcast • Why we care • EBN podcast • This Is Nursing • Maroon Mindset • Teach me, I'm a Nurse • Past Caring • RCGP eLearning podcast • The BMJ Podcast • Primary Care Network podcasts • The Professional Support Unit's Pandemic Podcast • How can public health nurses help deliver the Healthy Child Programme this winter? • Talking GP
Research	<ul style="list-style-type: none"> • Science Daily • Multimorbidity / multiple long-term conditions (MLTC)
Freebies	<ul style="list-style-type: none"> • Blue Light Card
Other	



Thank you for reading Future Proof Health's weekly news!
If you missed past issues, please click [here](#) to view them

More information can be found on our website, [here](#)

Don't forget to like us on [Facebook](#) & Follow us on [Twitter](#)

