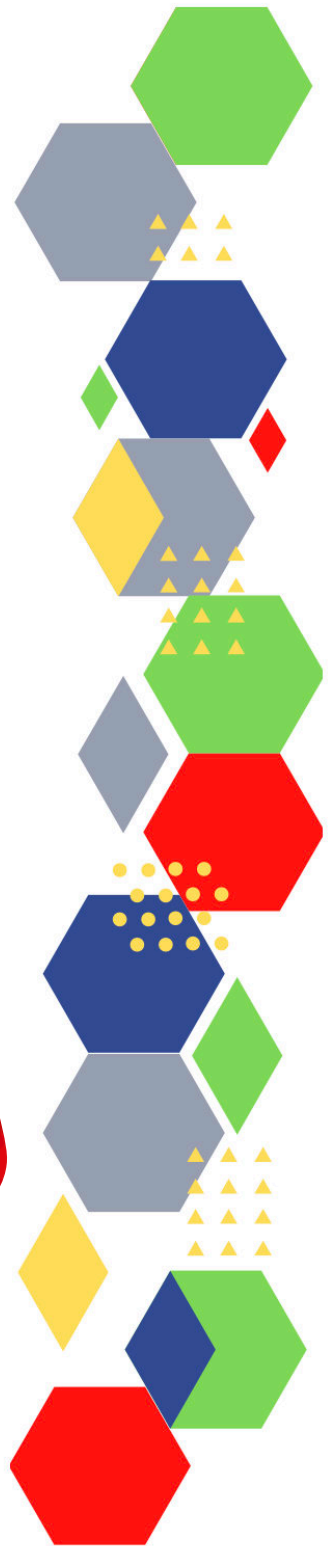
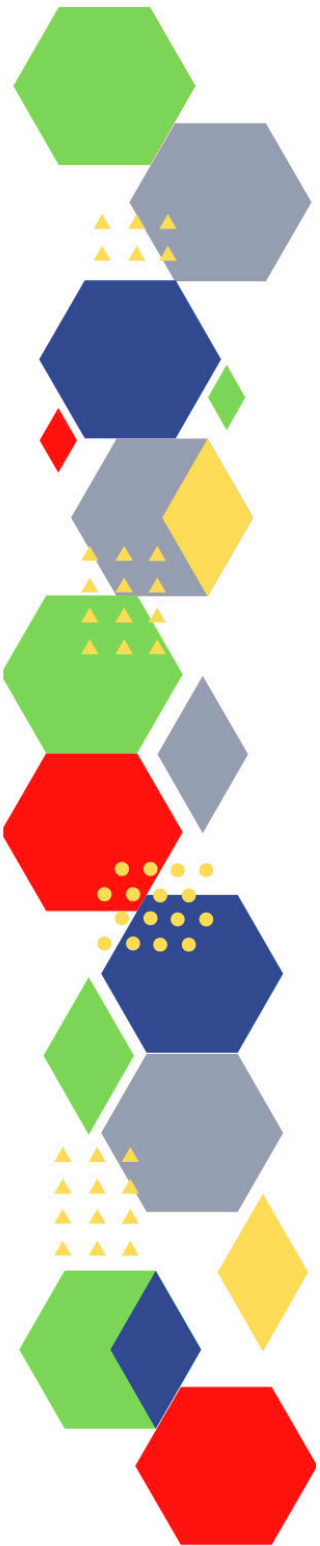


Future Proof Health
Presents

Weekly News

23rd December 2022



Communication	
Communication with Patients	
Communication within Teams	
Consent / Advocacy / IMCA	
People and Personal Development	
Personal / People Development / Leadership	<ul style="list-style-type: none"> • Accountability and delegation in practice
NHS Employers / HR / NHS Pension	<ul style="list-style-type: none"> • NHS Employers • Pensions Online • NHS Pension Scheme: proposed amendments to scheme regulations - GOV.UK (outlook.com) • Action to bolster NHS workforce and retain senior doctors - GOV.UK (www.gov.uk)
Health, Safety & Security	
	<ul style="list-style-type: none"> • NPSA • Control of Substances Hazardous to Health (COSHH) • Weekly Digest Newsletter: 8 December 2022 • Weekly Digest Newsletter: 15 December 2022 (govdelivery.com)
Gov UK - NHS	
CQC	<ul style="list-style-type: none"> • GP mythbusters • CQC update for adult social care providers (govdelivery.com)
MIMS	<ul style="list-style-type: none"> • Prescribing Update • Free CPD module on MIMS Learning covers invasive group A streptococcus diagnosis and prescribing
Drug / Device Alerts (MHRA)	<ul style="list-style-type: none"> • Drug Safety Update (mhradrugsafety.org.uk)

<p>Vaccines / Medications / Prescribing</p>	<ul style="list-style-type: none"> • Protocol for ordering, storing and handling vaccines • A Competency Framework for all Prescribers • Non-medical prescribing • The Human Medicines Regulations 2012 • RCN - Non-medical prescribers • Royal Pharmaceutical Society • Standards for prescribing • Clinical Negligence Scheme for General Practice • Home - electronic medicines compendium (emc) • Drug shortages - live tracker MIMS online • NICE updates hypertension guidance (mims.co.uk) • MIMS antidepressants table updated • New best practice recommendations for menopause care published (mims.co.uk) • New gout guideline summary from MIMS
<p>Antibiotic steward-ship / Anti-microbial resistance</p>	<ul style="list-style-type: none"> • ESPAUR report 2022 - the latest findings on Antimicrobial Resistance - UK Health Security Agency (blog.gov.uk) • Raising awareness about AMR: toolkits for healthcare professionals - UK Health Security Agency (blog.gov.uk) • HPR volume 16 issue 12: news (12 December 2022) - GOV.UK (www.gov.uk) • Over 50,000 serious antibiotic-resistant infections in 2021, data shows
<p>Health Protection Review</p>	
<p>Emergency Situations</p>	<ul style="list-style-type: none"> • Resuscitation Council UK
<p>Infection Control / Infection Statics</p>	<ul style="list-style-type: none"> • NHS England » National infection prevention and control • Infection Prevention & Control Champions Network and Me (qni.org.uk)
<p>Safe Guarding</p>	<ul style="list-style-type: none"> • Female genital mutilation (FGM) • PREVENT • Child protection system in the UK • Safeguarding Adults • Safeguarding children: detailed information • Domestic abuse victim services, England and Wales: 2022 (www.gov.uk) • Dudley Financial Abuse Alliance - September 2022 (govdelivery.com) • Wolverhampton Safeguarding Together - Training Update November 2022 • Wolverhampton - Training Update December 2022 (govdelivery.com)
<p>Practice Policies: Practice Management / Accountability Duty of Candour</p>	

Audit	
Information Governance / Record Keeping	<ul style="list-style-type: none"> • Guide to Data Protection • Supporting general practice – Medical record keeping
Quality & Service Improvement	
Quality, Service & Improvement	<ul style="list-style-type: none"> • The PRSB • General Practice Assessment Questionnaire (GPAQ) • Healthwatch • NHS Five Year Forward View • General Practice Forward View • NMC • Dr Jon Griffiths Blog • NHS Confed • Health Quality Improvement Partnership
Roles in General Practice Including AHP	<ul style="list-style-type: none"> • Standards for nursing associates • GP mythbuster 57: Health Care Assistants in General Practice • NHS England » Allied Health Professions
Revalidation	
Personal Practice & Development	
Practice Management	<ul style="list-style-type: none"> • Institute of General Practice Management • Practice Index
EMIS / System One	
Recruitment Employment / Retirement / Legacy Nursing	
NHS Self Care & Resilience	<ul style="list-style-type: none"> • Samaritans • Mental Health at work • Calm • Supporting our NHS people • The Hub :: Black Country Healthcare NHS Foundation Trust • Practitioner Health Mental Wellbeing App

Practice Transformation / Innovation Agency	<ul style="list-style-type: none"> • Health and Care Act 2022: combined impact assessments - GOV.UK (www.gov.uk) • collaborative practice webinar (createsend1.com) • Patients in England at risk as NHS and care 'gridlocked', (kingsfundmail.org.uk) • General practices to have direct access to tests to speed up cancer diagnosis (independentnurse.co.uk) • Innovations in social prescribing: the role of housing (kingsfundmail.org.uk) • Register with a GP surgery service - NHS Digital (createsend1.com) • 'Find a GP' (createsend1.com) • NHS Digital Research (createsend1.com)
Future of NHS / General Practice / NHS Recovery	<ul style="list-style-type: none"> • NHS England • NHS England » Primary care • NHS mandate 2022 to 2023 • Changes to NHS budget • Conversations around general practice need to be about more than just access (kingsfundmail.org.uk) • Register with a GP Surgery • Press release CIPFA publishes interesting care report • National General Practice Profiles: December 2022 update - GOV.UK (www.gov.uk) • Government turbocharges efforts to tackle COVID-19 backlogs - GOV.UK (www.gov.uk) • Strategies reduce waiting times elective care
NHS Resolution	<ul style="list-style-type: none"> • NHS Resolution Newsletter (cmail19.com)
ICS / ICB / ICP / PCN Commissioning	
QOF / PHOF / DES / LES / NHS Contract / CQRS / CQUIN	
Leadership / Innovation	
Greener NHS	<ul style="list-style-type: none"> • Greener Allied Health Professional hub (england.nhs.uk) • Achieving a step change in the health protection response to climate change - UK Health Security Agency (blog.gov.uk) (outlook.com)

Personalised Care	
Personalised Care / Self Care / Social Prescribing / Health Coaching	<ul style="list-style-type: none"> • Self Care forum • Personalised Care Institute • Personalised care • Social Prescribing Academy • NHS England » Health coaching and care coordination welcome packs
Group consultation	
Working Differently	
Shared Decision Making	<ul style="list-style-type: none"> • Personalised Care Institute
Equality & Diversity	
Equality & Diversity	<ul style="list-style-type: none"> • Public Health Profiles • Health equity and the UK Health Security Agency - UK Health Security Agency (blog.gov.uk)
Inclusion Health	<ul style="list-style-type: none"> • Health Creation Academic Network • Inequality on the inside
Poverty / Homelessness	<ul style="list-style-type: none"> • Crisis • This is Poverty • Talking about homes: the foundation for a decent life JRF
Population Health / Health Communities	
Thrive Into Work	<ul style="list-style-type: none"> • Thrive into Work • Thrive into Work Referral form
Health Inequalities	<ul style="list-style-type: none"> • NHS News • Sugar reduction – industry progress 2015 to 2020

Trans / Non-binary Health / LGBTQ+	<ul style="list-style-type: none"> • LGBT Foundation • Surgery staff grab sheet (squarespace.com) • Trans inclusive organisations — TransActual • TransActual - Healthcare • CliniQ
Migrant / Refugee Health	<ul style="list-style-type: none"> • THE REFUGEE & MIGRANT CENTRE
Traveller / Gypsy / Romany Health	<ul style="list-style-type: none"> • Gypsy Roma and Traveller History and Culture The Traveller Movement • Friends, Families and Travellers (gypsy-traveller.org) • Gypsies and Travellers in England and Wales: lived experiences - GOV.UK (outlook.com)
Veterans Health	<ul style="list-style-type: none"> • The first call for help takes courage
Voluntary / Charity	
Management of Emergency Situations	
Management of Emergency Situations	
111 / Emergency Care	<ul style="list-style-type: none"> • Ambulance Services Will Be 'Incredibly Stretched' During Strike, Says NHS Chief (medscape.com) • National ambulance syndromic surveillance: weekly bulletins 2022 (outlook.com) • #EM3: East Midlands Emergency Medicine Educational Media
First Contact	<ul style="list-style-type: none"> • Supporting general practice – Common pitfalls • Paediatrics for Primary Care (and anyone else) (gppaedstips.blogspot.com)
Red Flags	<ul style="list-style-type: none"> • #EM3: East Midlands Emergency Medicine Educational Media
Sepsis	<ul style="list-style-type: none"> • Sepsis: recognition, diagnosis and early management • Sepsis guidance implementation advice for adults • Sepsis in Children • Sepsis Trust • quick SEPSIS RELATED ORGAN FAILURE ASSESSMENT
Therapeutic Monitoring	
OSCE	<ul style="list-style-type: none"> • Geeky Medics • Abdominal Examination - Demonstration - YouTube • Cardiovascular Examination - Demonstration - YouTube • Respiratory Examination - Demonstration - YouTube • Physical Diagnosis Skills - University of Washington School of Medicine

Role Specific	
Cervical Cytology	<ul style="list-style-type: none"> • Guide to the interim assessment • British Association for Cytopathology • Lab Tests Online
Ear Care	<ul style="list-style-type: none"> • Ear Care Centre • RNID
Wound Management / Compression	<ul style="list-style-type: none"> • Microworld • Tissue Viability Society • The BLS • New material could promote wound healing for diabetes patients
Minor Surgery	
Obtaining Samples / Results	<ul style="list-style-type: none"> • Lab Tests Online
Health Promotion / Health Screening	
Health Promotion / Population Health	<ul style="list-style-type: none"> • Better Health • SHAPE Strategic Health Asset Planning and Evaluation (shapeatlas.net)
Health Screening	<ul style="list-style-type: none"> • PHE Screening • Patients to carry out health checks in comfort of own home to ease pressure on frontline services - GOV.UK (www.gov.uk)
PHE / OHID / UKHSA	<ul style="list-style-type: none"> • Knowledge & Library Services • Campaign Resources • Public Health Profiles • Health Publications • Health Profile for England 2021 • English indices of deprivation 2019
NHS Health Check	<ul style="list-style-type: none"> • NHS Health Check
UK GOV Flu / Covid / Bird Flu	<ul style="list-style-type: none"> • An update on avian flu - UK Health Security Agency (blog.gov.uk) (outlook.com)

UK GOV - General Practice	
UK GOV - Secondary Care	
UK GOV Deaths / Suicide / Palliative Care / Mortality / End of Life	
UK GOV - LTC	
Surveillance / Syndromic Surveillance	<ul style="list-style-type: none"> • Syndromic surveillance: systems and analyses - GOV.UK (www.gov.uk)
Ambulance / Remote Health / 111 / Urgent Care / A&E	
UK GOV Infectious Disease Monitoring / NOIDS	<ul style="list-style-type: none"> • Group A streptococcal infections: activity during the 2022 to 2023 season (outlook.com) • Travel-associated infections in London: 2020, 2021 and 2022 (outlook.com) • Listeriosis in England and Wales: summary for 2020 (outlook.com) • Weekly Statutory Notification of Infectious Diseases (NOIDs) Report (outlook.com) • The UK Public Health Rapid Support Team - A renewed commitment to tackling infectious diseases - UK Health Security Agency (blog.gov.uk) • Laboratory confirmed cases of measles, rubella and mumps in England: July to September 2022 - GOV.UK (outlook.com) • Diphtheria: cases among asylum seekers in England, 2022 (outlook.com) • UK polio eradication status at risk warns UKHSA nurse • Measles outbreaks almost inevitable say early years vaccination experts
UK GOV - Mental Health / Learning Difficulties	
Addiction/Smoking	<ul style="list-style-type: none"> • Drink Coach • Stop smoking interventions and services • Big rise in gambling addictions putting suicidal young men in hospital (kingsfundmail.org.uk) • Insights into what people think: being smart with advice on smoking (practicenursing.com)

Immunisation / Travel Health

- [Joint Committee on Vaccination and Immunisation](#)
- [Immunisation against infectious disease](#)
- [West Midlands Immunisation Service](#)
- [Vaccination of individuals with uncertain or incomplete immunisation status](#)
- [Immunisation Queries: Immunisation information for Health Care Services within the West Midlands area](#)
- [Immunisation](#)
- [NHS England » It's vital that frontline health and care staff keep coming forward for the COVID-19 and flu vaccines](#)
- [Answering questions on monkeypox vaccination - UK Health Security Agency \(blog.gov.uk\) \(outlook.com\)](#)
- [Vaccinations and infections](#)
- [New vaccine marketing campaign urges millions to boost their immunity this winter - GOV.UK \(www.gov.uk\) \(outlook.com\)](#)
- [Get vaccinated and boost your winter protection - UK Health Security Agency \(blog.gov.uk\) \(outlook.com\)](#)
- [our latest video featuring Santa getting his booster \(outlook.com\)](#)
- [NHS England » NHS expands mental health crisis services this winter](#)

Flu	<ul style="list-style-type: none"> • Flu and flu vaccinations • The national influenza immunisation programme 2021 to 2022 • Flu vaccines for the 2021 to 2022 season poster • Appendix C: Flu vaccinator competency assessment tool • Healthcare assistants and flu vaccinations
Covid Vaccine	<ul style="list-style-type: none"> • Greenbook COVID-19 chapter 14a • COVID-19 Vaccine Moderna e-learning now available • GP COVID-19 vaccine dashboard • Updates made to the COVID-19 vaccination learning programme • People with severe mental illness now eligible for a Covid-19 booster • Nearly a quarter of UK health workers hesitant about regular covid vaccinations
Children	<ul style="list-style-type: none"> • Child Health Information Services Local Government Association • Intranet Portal - Logon (phe.gov.uk) • Measles outbreaks almost inevitable say early years vaccination experts • All routine childhood vaccinations fall below 95 target in England
Adults	<ul style="list-style-type: none"> • Immunisation patient group direction (PGD) templates • Shingles immunisation programme: introduction of Shingrix® letter
Vaccine Update	<ul style="list-style-type: none"> • Vaccine update: issue 331, August 2022 - GOV.UK (www.gov.uk) • Vaccine update: issue 329, May 2022 - GOV.UK (www.gov.uk) • Vaccine update: issue 328, May 2022, Shingrix® special edition - GOV.UK (www.gov.uk) • Vaccine update: issue 327, May 2022, SCID, TB and BCG special edition (www.gov.uk) • Vaccine update: issue 326, April 2022, HPV special edition - GOV.UK (www.gov.uk) • Vaccine update: issue 325, April 2022, flu special edition - GOV.UK (www.gov.uk)

PGD	<ul style="list-style-type: none"> • Hib/MenC: patient group direction (PGD) template - GOV.UK (www.gov.uk)
Travel Health	<ul style="list-style-type: none"> • Travel Health Pro • Fit for Travel • Travel Health • Jane Chiodini • Corona.Help
Mental Health / Learning Disability / Disability	
Mental Health	<ul style="list-style-type: none"> • Mental Health • Mental Health UK • Mind • Place2b • Rethink Mental Illness • Young Minds • Every Mind Matters • Calm • Headspace • Better Health - Every Mind Matters - Resources • ZSA Training • NHS > Mental Health • NHS Confederation parliamentary briefing - No wrong door - a ten-year vision for mental health learning disability and autism services
Learning Disability	<ul style="list-style-type: none"> • Learning Disabilities • Learning Disability England • Mencap • Bild • Autism
Disability (Inc. hearing and visual)	<ul style="list-style-type: none"> • Disability Rights UK • Disability Matters • RNID - National hearing loss charity • Spokzpeople • Sight Loss Data Tool RNIB • understand and apply direct payments (england.nhs.uk) • meet their duty to ensure those eligible have a personal health budget or personal wheelchair budget (england.nhs.uk)

From Cradle to...

<p>Infant Health</p>	<ul style="list-style-type: none"> • Tommys • First Steps Nutrition Trust • Bliss • ICON Toolkit • Sandwell - BC - ICB Primary Care - 7 minute briefing
<p>Child Health</p>	<ul style="list-style-type: none"> • Unicef • Health Professional Academy • Premature Babies • Child and Maternal Health • Women and Child First • Child Health Information Services • Place2b • Childhood eczema • Childhood asthma • Paediatrics for Primary Care (and anyone else) (gppaedstips.blogspot.com) • Barnardos • Childrens Society • Action for Children • Infant allergy (infantallergyconference.com) • Managing eczema (managing-eczema.co.uk) • Nursing at the children's hospice Julia's House (independentnurse.co.uk) • Strep A: School antibiotics rollout would 'reduce school nurse capacity for other vital services' (cogora.com) • A must read guide to Strep A for general practice nurses • Urgent need to increase MMR vaccination in deprived areas of London • 5 ways to protect your under-5's this winter - UK Health Security Agency (blog.gov.uk) (outlook.com)
<p>Adolescent Health</p>	<ul style="list-style-type: none"> • Adolescent Health Programme • Society for Adolescent Health and Medicine • Young Minds

<p>Women's Health</p>	<ul style="list-style-type: none"> • Womens Health Concern • Well Being of Women • Coppa Feel • Menopause Matters • The Menopause Charity • Royal College of Obstetricians and Gynaecologists - Guidelines • Pelvic Partnership • CRUK - Womens Cancer • Breast Cancer Now • Foundation for Women's Cancer • Eve Appeal • Ovarian.Org • Jo's Trust • Well Spring • Know your Lemons • British Menopause Society - <u>www.thebms.org.uk</u> • NHS - www.nhs.uk/conditions/menopause • Henpicked - <u>henpicked.net</u> • The Menopause Exchange - <u>www.menopause-exchange.co.uk</u> • Women's Health Concerns - <u>www.womens-health-concern.org</u> • Menopause Matters - <u>www.menopausematters.co.uk</u> • The Daisy Network - <u>www.daisynetwork.org</u> • Dr Louise Newson's Menopause Doctor - <u>www.menopausedoctor.co.uk</u> • Manage My Menopause - <u>www.managemymenopause.co.uk/menopause-advice</u> • Menopause Support - <u>menopausesupport.co.uk</u> • Bourne2Care • Vaginal atrophy: what is it and how can it be treated? (<u>practicenursing.com</u>)
<p>Mens Health</p>	<ul style="list-style-type: none"> • Mens Health Forum • Mens Health Month • Mens health.org • Mens Health UK • Men and mental health • Men's Mental Health Awareness • Prostate Cancer UK • Orchid Fighting Male Cancer • Prostate Cancer UK Facebook Page • Movember

The Older Population	<ul style="list-style-type: none"> • BGS • Ageing Better • Delirium Champions - YouTube
Carers / Social Care / Care Homes	<ul style="list-style-type: none"> • The Care Provider Alliance • Skills for Care • The Care Workers' Charity • Supporting Adult Carers • The Care UK • Adult Social Care Update • BREAKING NEWS from The Carer (ourmailsender4.com) • Read Issue 126 of The Carer Digital Now! (ourmailsender4.com) • Adult Social Care Committee challenges government to urgent reforms in adult social care - Committees - UK Parliament • Read Issue 127 of The Carer Digital Now! (ourmailsender4.com)
Young Carers	<ul style="list-style-type: none"> • Young carers: who are they and why do they need support? Action For Children • Young carers Barnardo's (barnardos.org.uk)
Family Planning & Sexual Health	
Family Planning	<ul style="list-style-type: none"> • Faculty of Sexual and Reproductive Healthcare Education and Training
Reproductive	<ul style="list-style-type: none"> • Tommys
Sexual Health / Sexual Abuse	<ul style="list-style-type: none"> • Sexual and Reproductive Health Profiles • FSRH Education & Training • Getting tested for an STI: Your guide to how it works - UK Health Security Agency (blog.gov.uk) (outlook.com) • STIs: Get tested, get treated - UK Health Security Agency (blog.gov.uk) (outlook.com)
Maternity / Neonate health	<ul style="list-style-type: none"> • Breastfeeding and medication for long-term conditions (practicenursing.com)

Care of Patients with Long Term Conditions	
LTC	<ul style="list-style-type: none"> • Physical Activity for the Prevention and Management of Long-Term Conditions • Health A to Z
Diabetes & Pre-Diabetes	<ul style="list-style-type: none"> • Mumoactive • The mySugr App • PCDS Entry level module series - Foot Check • Type 2 diabetes in adults: management • Diabetes on the Net Online diabetes journals, education and resources for healthcare professionals. • Early-onset type 2 diabetes diagnoses rising faster in UK than rest of world (cogora.com) • CPD module: Diabetes in pregnancy – the primary care role (cogora.com) • Let's protect our family from needle stick injuries in insulin injections (independentnurse.co.uk)
Respiratory	<ul style="list-style-type: none"> • Spirometry: step by step • ARTP • British Lung Foundation • The Primary Care Respiratory Society • Respiratory – Respimat® patient resources Boehringer Ingelheim (boehringer-ingelheim.com) • Respiratory News & Advice (nursinginpractice.com) • Dudley pulmonary rehab - Template PI (dgft.nhs.uk) • More than 5,200 people could benefit after NICE broadens recommendation on chronic lung disease treatment News News NICE • Chronic Shortness of Breath - Nursing in Practice Reference • We can and should go further to reduce air pollution says Chief Medical Officer - GOV.UK (www.gov.uk)
COPD	<ul style="list-style-type: none"> • Right Breathe • GOLD COPD 2022 strategy Independent professional body guideline Guidelines • Chronic obstructive pulmonary disease: all things inhaled and more (independentnurse.co.uk) • EXACOS study data - COPD patients with an exacerbation history are at increased risk of future exacerbations and increased risk of all-cause mortality. (astrazeneca.com)

Continuation of Long Term Conditions

Asthma	<ul style="list-style-type: none"> • Asthma UK • Asthma: diagnosis, monitoring and chronic asthma management • Global Initiative for Asthma • British guideline on the diagnosis and pharmacological management of asthma in children • British Thoracic Society guidelines for home oxygen use in adults: accredited by NICE • Scenario: Management • Delivering a net zero NHS • How to Reduce the Carbon Footprint of Inhaler Prescribing • How to use your inhaler • Health advice • Chronic obstructive pulmonary disease in over 16s: diagnosis and management
Hypertension	<ul style="list-style-type: none"> • British Heart Foundation • Blood Pressure UK • Hypertension in adults: diagnosis and management • Hypertension in adults: diagnosis and treatment • Hypertension: symptoms to look out for and treatment options (rcni.com)
CVD/AF	<ul style="list-style-type: none"> • QRISK®3-2018 risk calculator • Heart Rhythm Alliance • CVD risk assessment and management • NHS lipid management pathway NHS guideline Guidelines • Accelerating progress on cardiovascular disease (kingsfundmail.org.uk) • Comparative effects of rosuvastatin, placebo and supplements on lipids → (gpnotebook.com)
Heart Failure	<ul style="list-style-type: none"> • British Heart Foundation • British Society Guidelines • Iron deficiency and heart failure → (gpnotebook.com) • Left ventricular hypertrophy → (gpnotebook.com)

Continuation of Long Term Conditions

Cancer / Oncology	<ul style="list-style-type: none">• Surviving Thyroid Cancer• Help Us Help You - Lung Cancer Symptoms• Breast Cancer Now• Macmillian• Bowel Cancer UK• Brain Trust• CRUK• Action Cancer• Foundation for Women's Cancer• NHS England » Cancer• Dietetic management and pancreatic cancer January 2023
Chronic Kidney Disease	<ul style="list-style-type: none">• Kidney.Org• Kidney Quality Improvement Partnership
Liver Disease	<ul style="list-style-type: none">• British Liver Trust• Liver Research• BRITISH ASSOCIATION FOR THE STUDY OF THE LIVER• LIVERNORTH• LIVER DISEASE AND CIRRHOSIS

Continuation of Long Term Conditions





Blood Disorders	<ul style="list-style-type: none"> • Blood Cancer UK • UK Thalassaemia Society • The ITP Support Association • UK-ITP Paediatric ITP Registry • The Haemophilia Society • UK MDS Forum • Pernicious Anaemia Society • Haemochromatosis UK
G.I	<ul style="list-style-type: none"> • GIST Cancer UK • Pernicious Anaemia Society • Antibiotics shown to reduce risk of aspirin-induced GI bleeding
ENT	
G.U	
ME / CFS / Fibromyalgia	<ul style="list-style-type: none"> • ME Association • ME Research • Action for M.E • Fibromyalgia Action UK • Fibromyalgia UK • Home - Fibromyalgia Awareness UK (fibroawarenessuk.org) • Fibromyalgia - Symptoms, diagnosis and treatment BMJ Best Practice • Fibromyalgia - The Brain Charity
Neurological Conditions	<ul style="list-style-type: none"> • The Brain Tumour Charity • Narcolepsy.Org • ACNR • MS Society UK Information, research and support Multiple Sclerosis Society UK • Home MS Trust • Government delivers on pledge for £50 million motor neurone disease research funding - GOV.UK (www.gov.uk)

Continuation of Long Term Conditions

<p>Musculoskeletal Conditions</p>	<ul style="list-style-type: none"> • Rheumatology • National Axial Spondyloarthritis Society • Musculoskeletal health • Musculoskeletal health: 5 year prevention strategic framework • Faculty of Occupational Medicine • Guide to embedding your first contact physiotherapy service • Rheumatology - Getting It Right First Time - GIRFT • Rheumatoid arthritis: Why don't patients take their medications? (independentnurse.co.uk)
<p>Endocrine Disorders / Metabolic Disorders</p>	<ul style="list-style-type: none"> • Society for Endocrinology • Turner Syndrome Support Society • Thyroid Eye Disease • British Thyroid Foundation • Thyroid UK • The Pituitary Foundation • Addisons Disease • Parathyroid UK • The Royal Osteoporosis Society • Metabolic Support UK
<p>Frailty</p>	<ul style="list-style-type: none"> • Recognising frailty • Identifying frailty • CLINICAL FRAILTY SCALE
<p>Dementia / Alzheimers</p>	<ul style="list-style-type: none"> • Dementia UK • Age UK - Understanding Dementia • Delirium Champions • Alzheimers Society

Continuation of Long Term Conditions

Dermatology	<ul style="list-style-type: none"> • British Association of Dermatologists • Eczema • The British Skin Foundation • Acne vulgaris: management • The Primary Care Dermatology Society • Acne.org • Allergy UK • Urticaria • Hives • Sunburn • Causes of cancer and reducing your risk • What is Rosacea? • Rosecea • The Rosacea Forum • Herpes Viruses Association • Shingles • Fungal Skin Infection - Foot • The Psoriasis Association • National Psoriasis Foundation • Melanoma • Skin Health Information • British Association of Plastic Reconstructive and Aesthetic Surgeons - Procedure Guides • Warts and verrucae • Dermatology
Allergy / Auto-immune / Genetic Conditions	<ul style="list-style-type: none"> • Allergy UK • British Society for Rheumatology • Addisons Disease
Obesity	<ul style="list-style-type: none"> • Obesity UK
Pain Management	<ul style="list-style-type: none"> • Pain Concern
Osteoporosis / Falls	

<i>Continuation of Long Term Conditions</i>	
Genomics	<ul style="list-style-type: none"> • Over 175 million for cutting edge geonomics research
Loneliness	<ul style="list-style-type: none"> • The Cares Family Strategy
Multi-Morbidity	<ul style="list-style-type: none"> • Multimorbidity • Multimorbidity / multiple long-term conditions (MLTC)
Minor Illness / First Contact Assessment / OSCE	<ul style="list-style-type: none"> • Fact Sheets - Self Care Forum • OSCE Checklists  (mlsend.com) • OSCE Flashcards  (mlsend.com) • 600+ OSCE Stations  (mlsend.com) • Anatomy Flashcards  (mlsend.com) • Health A to Z • #EM3: East Midlands Emergency Medicine Educational Media • NHS England » Group A Strep • Free CPD module on MIMS Learning covers invasive group A streptococcus diagnosis and prescribing • Lightning Learning: Scarlet Fever • GP practices told to have low threshold when prescribing antibiotics as Strep A infections rise (independentnurse.co.uk) • Group A Strep - What you need to know - UK Health Security Agency (blog.gov.uk) (outlook.com) • Changes to the COVID-19 dashboard and COVID-19 vaccination surveillance report - UK Health Security Agency (blog.gov.uk) (outlook.com) • A must read guide to Strep A for general practices nurses • College and leading health experts launch latest Strep-A guidance to support busy GPs (rcgp.org.uk)
Other / Case Studies	
Winter / Summer Pressures	<ul style="list-style-type: none"> • 5 ways to protect your under-5's this winter - UK Health Security Agency (blog.gov.uk) (outlook.com) • Increasing transparency in our winter statistics - UK Health Security Agency (blog.gov.uk) (outlook.com) • All routine childhood vaccinations fall below 95 target in England

End of Life Care	
End of Life Care / Bereavement	<ul style="list-style-type: none"> • ReSPECT for healthcare professionals • Hospice UK • How to support a good death (independentnurse.co.uk)
Flu / Covid-19 / Monkeypox	
Covid-19	<ul style="list-style-type: none"> • Technical report on the COVID-19 pandemic in the UK - GOV.UK (www.gov.uk) • The COVID-19 Dashboard Moves to Weekly Updates • You can find more information about the R value range and growth rate here. (outlook.com) • Changes to the COVID-19 dashboard and COVID-19 vaccination surveillance report - UK Health Security Agency (blog.gov.uk) (outlook.com) • Liver drug offers hope for future covid outbreaks
Flu	
Long covid	<ul style="list-style-type: none"> • Your Covid Recovery • Long Term Effects of Covid • Post Covid Syndrome - Long Covid • COVID-19 Yorkshire Rehabilitation Screening Tool • FOM Guidance • Long Covid Toolkit • Caring for People with Long Covid (qni.org.uk)
MONKEY POX	<ul style="list-style-type: none"> • news story (outlook.com) • Monkeypox Stakeholder and Partner Communications Pack (outlook.com) • 'Answering questions on Monkeypox' (outlook.com) • Monkeypox outbreak: epidemiological overview, 1 November 2022 - GOV.UK (www.gov.uk) (outlook.com)

News & Views

<p>Digital News / Remote Consultations / AI</p>	<ul style="list-style-type: none"> • Digital Health News Webinars • Digital Health News • NHS Digital • DigiHealthWell • Public Sector Events, Conferences and Training - Inside Government • Digital Transformation • Your daily news updates from Digital Health (campaign-archive.com) • We can and should go further to reduce air pollution says chief medical officer • Mental Health of Children and Young People in England 2022 - wave 3 follow up to the 2017 survey • Do UK Allied Health Professionals (AHPs) have sufficient guidelines and training to provide telehealth patient consultations? Human Resources for Health Full Text (biomedcentral.com) • Digital Health News - 8 December 2022 (mailchi.mp) • York GP group sees significant benefits of AI triage tech (kingsfundmail.org.uk) • NHS ad campaign plans encourage phone or online access to GP in first instance (kingsfundmail.org.uk) • New CEO for HealthTech specialist serving NHS (kingsfundmail.org.uk) • Great Ormond Street deploys data-sharing tech for ambulance journeys (kingsfundmail.org.uk) • Health Education England outlines training plans for “digital first” NHS (kingsfundmail.org.uk) • Strasys and Silico partner for healthcare digital twin projects (kingsfundmail.org.uk) • National secondary care transformation keynote confirmed (mailchi.mp) • Digital Health News - 15 December 2022 (mailchi.mp)
<p>PSNC News / Pharmacy</p>	<ul style="list-style-type: none"> • National Pharmacy Association • Royal Pharmaceutical Society • Medicines Learning Portal • Specialist Pharmacy Service • PSNC Newsletter: 7th December (mailchi.mp) • PSNC News Alert: Pharmacy Pressures: Please contact your MP (mailchi.mp) • PSNC Newsletter: 14th December (mailchi.mp) • Mandatory weight management campaign in January - PSNC Website • Three SSPs issued for Phenoxymethylpenicillin (Pen V) oral solution (mailchi.mp)

Pulse / GP Online / HSJ / NB Medical	<ul style="list-style-type: none"> • GP Online • HSJ • Pulse Today
Primary Care Update / PCC / PPP	<ul style="list-style-type: none"> • Public Policy Projects News • Primary Care Bulletin • Insight - December
Proactive Care	
Kings Fund	<ul style="list-style-type: none"> • The Kings Fund • Health Management and Policy Alert: 9 December 2022 (kingsfundmail.org.uk) • General practice: we need to focus on more than just access (kingsfundmail.org.uk) • Digital Health Digest (kingsfundmail.org.uk) • Make 2023 the year you focus on cardiovascular disease (kingsfundmail.org.uk)
Health Care Leaders Newsletters	
World Health Organisation	<ul style="list-style-type: none"> • WHO • OpenWHO • CBDE Awareness: Recognizing Signs of Deliberate Release of Chemical or Biological Agents (outlook.com) • CBDE: Preparedness for Health First Responders (outlook.com) • CBDE: Preparedness for Public Health Professionals (outlook.com) • Introduction to Nipah virus disease (outlook.com) • For a healthier world: safely managed sanitation (outlook.com) • WHO Good Reliance Practices (outlook.com) • WHO Good Reliance Practices (outlook.com) • Monitoring methodologies for diet-related regulatory interventions to support a healthy food environment (outlook.com) • Measles and rubella outbreak preparedness and response in South East Asia Region (outlook.com) • Antimicrobial resistance and infection prevention and control (outlook.com) • Bloodstream infections (outlook.com) • Outbreak Investigations in health facilities (outlook.com)

Continuation of News & Views

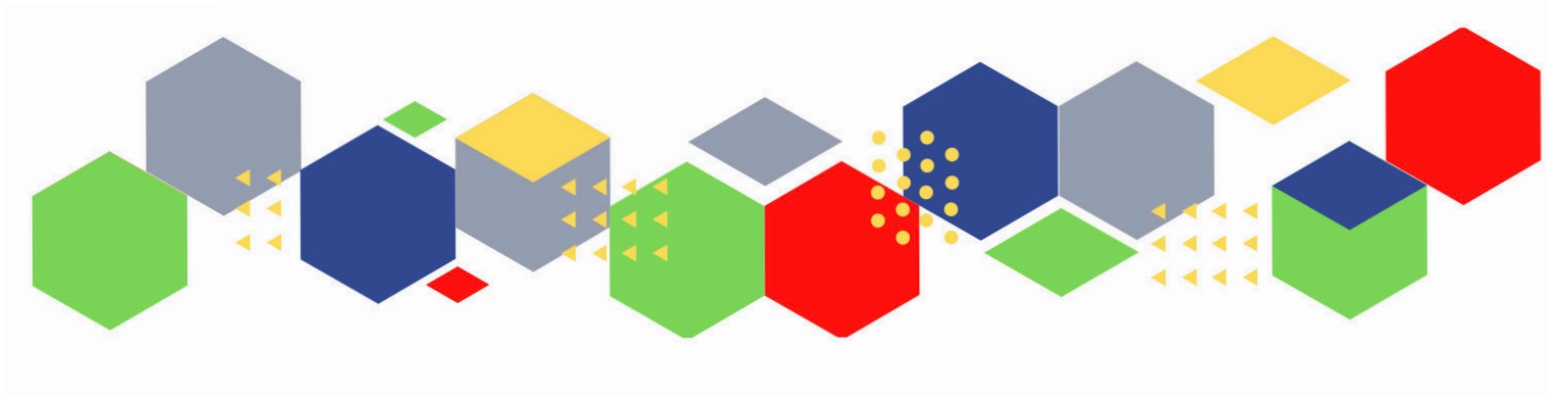
<p>IHCT / CCG / STP / Healthier Futures</p>	<ul style="list-style-type: none"> • Black Country & West Birmingham CCG • Dudley Integrated Health and Care • Home :: Black Country Healthcare NHS Foundation Trust • Issue 24 - Black Country Primary Care Brief (sharepoint.com) • Message from Mark Axcell & Staff News (22 December 2022) • Issue 23 - Black Country Primary Care Brief (sharepoint.com) • Message from Mark Axcell & Staff News (08 December 2022) (sharepoint.com) • Message from Mark Axcell & Staff News (24 November 2022) (sharepoint.com) • Message from Axcell & Staff News (01 December 2022) (sharepoint.com) • Message from Mark Axcell & Staff News (17 November 2022) (sharepoint.com) • Issue 22 - Black Country Primary Care Brief (sharepoint.com) • Issue 21 - Black Country Primary Care Brief (sharepoint.com) • Issue 20 - Black Country Primary Care Brief (sharepoint.com)
<p>NHSI / NHSE</p>	
<p>University / Student Nurses</p>	
<p>Medisa / Univadis / Geeky Medics / GP Notebook / Medscape</p>	<ul style="list-style-type: none"> • Medisa • Geeky Medics • Medscape Nurses • GP Notebook • Guidelines (medscape.com) • GPnotebook quick update (mailchi.mp)
<p>Nurse Guidelines</p>	
<p>The Health Foundation</p>	<ul style="list-style-type: none"> • The Health Foundation
<p>The Health Care Leaders Update</p>	<ul style="list-style-type: none"> • Health Care Leader News
<p>Practice Index</p>	
<p>Innovation Agency</p>	<ul style="list-style-type: none"> • Innovation Agency Exchange

Continuation of News & Views

RCN	<ul style="list-style-type: none"> • RCN • RCN Magazines Royal College of Nursing • RCN Bulletin Winter 2022 RCN Magazines Royal College of Nursing
Cavell Trust	<ul style="list-style-type: none"> • December News
Nursing in Practice / Nursing Standard / Independent Nurse	<ul style="list-style-type: none"> • Nursing Times • JCN Newsletter • GPN Bulletin • Nursing in Practice Bulletin • Understanding the crisis in social care (independentnurse.co.uk) • College and leading health experts launch latest Strep-A guidance to support busy GPs (rcgp.org.uk)
QNI	<ul style="list-style-type: none"> • QNI • Talk To Us @ – The Queen's Nursing Institute (qni.org.uk) • Queen's Nurse Update November 2022 (mailchi.mp)
NMC	<ul style="list-style-type: none"> • NMC
CMO / CNO	
Nice	<ul style="list-style-type: none"> • NICE • NICE News for Health and Social Care December 2022 (mailchi.mp)
RCGP / BMA / The Lancet	<ul style="list-style-type: none"> • The Lancet • British Medical Journal • Royal College of General Practitioners
Midlands Academic Health Science Network	<ul style="list-style-type: none"> • WMAHSN Network • Polypharmacy - WMAHSN
Healthwatch	<ul style="list-style-type: none"> • Healthwatch
Other	<ul style="list-style-type: none"> • Patients Association • Innovation Hub

Free Training / Webinars / Meetings / CPD	
Development / Information and Knowledge	<ul style="list-style-type: none"> • Red Whale Training • Issues & Answers
Free to RCN	<ul style="list-style-type: none"> • RCNi events RCNi
MIMMs Learning	
Eventbrite	
e-Learning for Health	
YouTube	<ul style="list-style-type: none"> • NHS England • Black Country Healthcare - YouTube
Future Proof Health Training	<ul style="list-style-type: none"> • Training
BCWB Training Hub	<ul style="list-style-type: none"> • Latest news from the Black Country Training Hub (campaign-archive.com) • Cuppa and Catch-up for Practice Nurses, ANPs, Nursing Associates and HCAs - all welcome!-20221201_123443-Meeting Recording
Evidence based care	
Podcasts	<ul style="list-style-type: none"> • The Nursing Handover Podcast • Nursing Standard Podcasts • Nursing Matters • Welcome to the BJN Podcast • Cygnet Health Care Podcast • EBN podcast • This Is Nursing • Teach me, I'm a Nurse • Past Caring • RCGP eLearning podcast • The BMJ Podcast • Primary Care Network podcasts • The Professional Support Unit's Pandemic Podcast • The Next GenCast

Apps	<ul style="list-style-type: none"> • Nursing in Practice launches mobile app
Area Bulletins	
Research	<ul style="list-style-type: none"> • Science Daily • Multimorbidity / multiple long-term conditions (MLTC) • National Institute for Health and Care Research • UKRI publishes updated diversity data and analysis • NHS Accelerated Access Collaborative » Embedding research in the NHS (england.nhs.uk) • HRA Latest December 2022 - help us improve clinical research; we respond to a WHO consultation; another organisation joins our public involvement pledge and more (govdelivery.com)
Blogs/Vlogs	<ul style="list-style-type: none"> • Blog NB Medical • Conversations around general practice need to be about more than just access (kingsfundmail.org.uk) • Regions in the NHS: what are they good for?
Freebies	<ul style="list-style-type: none"> • Blue Light Card
Campagne Links	
Other	



Thank you for reading Future Proof Health's weekly news!

If you missed past issues, please click [here](#) to view them

More information can be found on our website, [here](#)

Don't forget to like us on [Facebook](#) & Follow us on [Twitter](#)

