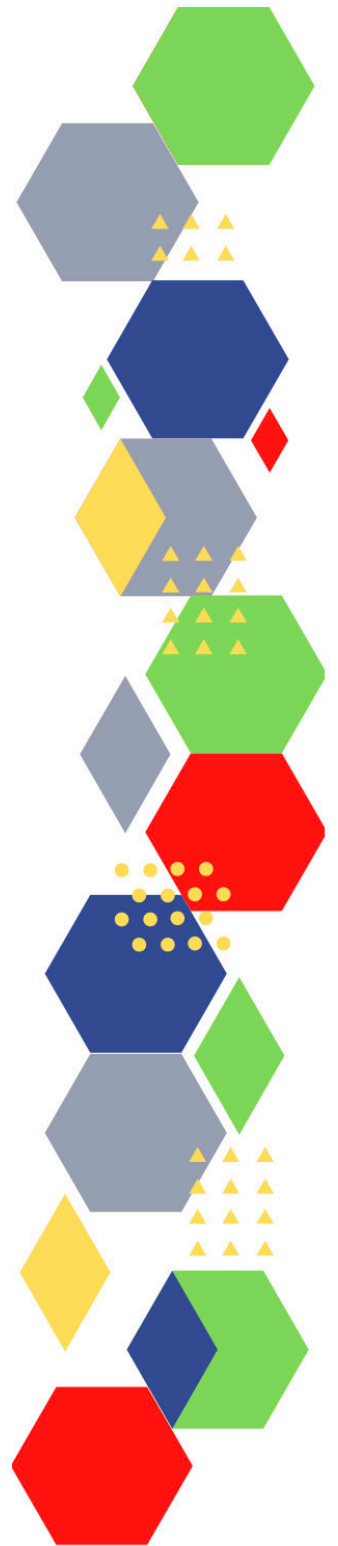




Future Proof Health Presents

Weekly News

21st October 2022



Communication	
Communication with Patients	
Communication within Teams	
Consent	<ul style="list-style-type: none"> • Gillick competency and Fraser guidelines • ReSPECT for healthcare professionals
People and Personal Development	
Personal / People Development / Leadership	<ul style="list-style-type: none"> • Accountability and delegation in practice
NHS Employers / HR / NHS Pension	<ul style="list-style-type: none"> • NHS Employers • Pensions Online
Health, Safety & Security	
	<ul style="list-style-type: none"> • NPSA • Control of Substances Hazardous to Health (COSHH) • Weekly Digest Newsletter: 20 October 2022 (govdelivery.com) • Lone workers: how employers should protect them - Overview - HSE
Gov UK - NHS	
CQC	<ul style="list-style-type: none"> • GP mythbusters • Prescribing the resolution of conflict in general practice • Regulation 18: Staffing - Care Quality Commission (cqc.org.uk) • CQC update for adult social care providers (govdelivery.com) • Provider review process in the new assessment framework - YouTube • Download slides (citizenlab.co) • Find the latest information and guidance from CQC
MIMS	<ul style="list-style-type: none"> • Prescribing Update

Antibiotic steward-ship / Anti-microbial resistance	<ul style="list-style-type: none"> • Combatting antibiotic resistance (independentnurse.co.uk) • Antibiotic awareness: toolkit for healthcare professionals in England - GOV.UK (www.gov.uk)
Drug / Device Alerts (MHRA)	<ul style="list-style-type: none"> • Drug Safety Update (mhradrugsafety.org.uk)
Emergency Situations	<ul style="list-style-type: none"> • Resuscitation Council UK
Infection Control / Infection Statics	<ul style="list-style-type: none"> • NHS England » National infection prevention and control • infection prevention control (IPC) guidelines (createsend1.com) • IPC face covering resources for NHS settings (updated September 2021) - Coronavirus Resource centre (phe.gov.uk) • Clostridioides difficile infection: guidance on management and treatment - GOV.UK (www.gov.uk) • Group A streptococcal infections: update on seasonal activity in England, 2021 to 2022 - GOV.UK (lnks.gd)
Vaccines / Medications / Prescribing	<ul style="list-style-type: none"> • Protocol for ordering, storing and handling vaccines • A Competency Framework for all Prescribers • Non-medical prescribing • The Human Medicines Regulations 2012 • RCN - Non-medical prescribers • Royal Pharmaceutical Society • Standards for prescribing • Clinical Negligence Scheme for General Practice • Home - electronic medicines compendium (emc) • Drug shortages - live tracker MIMS online
Safe Guarding	<ul style="list-style-type: none"> • Female genital mutilation (FGM) • PREVENT • Child protection system in the UK • Safeguarding Adults • Safeguarding children: detailed information • Domestic abuse victim services, England and Wales: 2022 (www.gov.uk) • Dudley Financial Abuse Alliance - September 2022 (govdelivery.com)
Practice Policies: Practice Management / Accountability Duty of Candour	<ul style="list-style-type: none"> • The Duty of Candour in Healthcare Forum 2022 (insidegovernment.co.uk) • Where does the buck stop? Understanding accountabilities and structures in the national health and care system in England The King's Fund (kingsfund.org.uk)
Audit	
Information Governance / Record Keeping	<ul style="list-style-type: none"> • Guide to Data Protection • Supporting general practice – Medical record keeping

Quality & Service Improvement	
Quality, Service & Improvement	<ul style="list-style-type: none"> • The PRSB • General Practice Assessment Questionnaire (GPAQ) • Healthwatch • NHS Five Year Forward View • General Practice Forward View • NMC • Dr Jon Griffiths Blog • NHS Confed • NHS England » High street pharmacists treat thousands more people for minor illnesses
Roles in General Practice	<ul style="list-style-type: none"> • Standards for nursing associates • GP mythbuster 57: Health Care Assistants in General Practice
Revalidation	
Personal Practice & Development	
Practice Management	<ul style="list-style-type: none"> • Institute of General Practice Management • Practice Index • Coronavirus » Living with COVID-19 – testing update (england.nhs.uk) • NHS General Practice Team Campaign Resource Centre (phe.gov.uk)
Recruitment Employment / Retirement / Legacy Nursing	<ul style="list-style-type: none"> • Health and safety for older workers (hse.gov.uk)
NHS Self Care & Resilience	<ul style="list-style-type: none"> • Samaritans • Mental Health at work • Calm • Supporting our NHS people • The Hub :: Black Country Healthcare NHS Foundation Trust • Self-Assessment Tool – Check my wellbeing (leadershipacademy.nhs.uk) • NHS England » Staff mental health and wellbeing hubs • NHS England » Looking after you: confidential coaching and support for the primary care workforce • NHS England » Physical health and wellbeing • NHS England » Financial wellbeing • NHS England » Having safe and effective wellbeing conversations

<p>Practice Transformation / Innovation Agency</p>	<ul style="list-style-type: none"> • NHS England » Creating a highly usable and accessible GP website for patients • Putting community and cooperation into care and support - Resources - Think Local Act Personal • Rather than 'fixing' the NHS, we need to radically rethink our approach to health - REFORM • Health and social care in England: tackling the myths The King's Fund (kingsfund.org.uk) • Capital investment in the NHS The King's Fund (kingsfund.org.uk) • NHS England » Having safe and effective wellbeing conversations • NHS England » Latest updates • SHAPE Strategic Health Asset Planning and Evaluation (shapeatlas.net) • Job crafting and flexible working in general practice Institute for Employment Studies (IES) (employment-studies.co.uk) • NHS England » 24/7 control centres among new plans to step up NHS winter preparations • NHS England » Going further on our winter resilience plans • Remove barriers to help tackle NHS crisis - GMC (gmc-uk.org)
<p>Future of NHS / General Practice / NHS Recovery</p>	<ul style="list-style-type: none"> • NHS England • NHS England » Primary care • NHS mandate 2022 to 2023 • A renewed vision for the NHS NHS Confederation • NHS England » NHS England operating framework • NHS England » NHS delivers record number of lifesaving cancer checks as long waits for care continue to fall
<p>ICS / ICB / ICP / PCN Commissioning</p>	<ul style="list-style-type: none"> • Integrated care (england.nhs.uk) • Introducing Integrated Care Systems: joining up local services to improve health outcomes (nao.org.uk) • Future-Health-Report-ICS-FINAL.pdf (futurehealth-research.com) • Integrated care in practice The King's Fund (kingsfund.org.uk) • NAO points to digital and data gaps in integrated care systems UKAuthority • Fledgling ICSs at 'high risk' of failing in face of deep NHS pressures GPonline • Pressures Pose Risks to Integrated Care Systems says Report (thecareruk.com) • Introducing Integrated Care Systems: joining up local services to improve health outcomes - National Audit Office (NAO) report • NHS England » Assuring and supporting complex change
<p>QOF / PHOF / DES / LES / NHS Contract / CQRS / CQUIN</p>	<ul style="list-style-type: none"> • We published documentation supporting the arrangements for General Practice contract arrangements in 2022/23 (england.nhs.uk)

Leadership / Innovation	<ul style="list-style-type: none"> • Leadership Academy • Interoperability is more than technology report.pdf (kingsfund.org.uk) • My day: Working as a lead nurse in general practice (cogora.com)
Greener NHS	<ul style="list-style-type: none"> • Sign up to Greener Practice Trainee Forum (google.com) • Greener NHS » Improving health outcomes for respiratory patients while reducing carbon emissions (england.nhs.uk) • National insulin pen recycling scheme launched (mims.co.uk)
Personalised Care	
Personalised Care / Self Care / Social Prescribing / Health Coaching	<ul style="list-style-type: none"> • Self Care forum • Personalised Care Institute • Personalised care • Social Prescribing Academy • Social prescribing may not be cost-effective or improve patient health, review finds (cogora.com) • Self Care Week Resources - Self Care Forum
Group consultation	
Working Differently	
Shared Decision Making	<ul style="list-style-type: none"> • Personalised Care Institute
Equality & Diversity	
Equality & Diversity	<ul style="list-style-type: none"> • Public Health Profiles
Inclusion Health	<ul style="list-style-type: none"> • Health Creation Academic Network • Inequality on the inside
Poverty / Homelessness	<ul style="list-style-type: none"> • Crisis • This is Poverty • Homeless and Inclusion Health Nurses – Practitioners Addressing Inequalities in Health – The Queen's Nursing Institute (qni.org.uk) • Poverty and the health and care system The King's Fund (kingsfund.org.uk)
Population Health / Health Communities	

Thrive Into Work	<ul style="list-style-type: none"> • Thrive into Work • Thrive into Work Referral form
Health Inequalities	<ul style="list-style-type: none"> • NHS News • Health disparities and health inequalities: applying All Our Health - GOV.UK (www.gov.uk)
Trans / Non-binary Health / LGBTQ+	<ul style="list-style-type: none"> • LGBT Foundation • Surgery staff grab sheet (squarespace.com) • Trans inclusive organisations — TransActual • TransActual - Healthcare • CliniQ
Migrant / Refugee Health	<ul style="list-style-type: none"> • THE REFUGEE & MIGRANT CENTRE
Traveller / Gypsy / Romany Health	<ul style="list-style-type: none"> • Gypsy Roma and Traveller History and Culture The Traveller Movement • Friends, Families and Travellers (gypsy-traveller.org)
Veterans Health	<ul style="list-style-type: none"> • The first call for help takes courage
Management of Emergency Situations	
Management of Emergency Situations	
111 / Emergency Care	
First Contact	<ul style="list-style-type: none"> • Supporting general practice – Common pitfalls • Paediatrics for Primary Care (and anyone else) (gppaedstips.blogspot.com)
Red Flags	
Sepsis	<ul style="list-style-type: none"> • Sepsis: recognition, diagnosis and early management • Sepsis guidance implementation advice for adults • Sepsis in Children • Sepsis Trust • quick SEPSIS RELATED ORGAN FAILURE ASSESSMENT
Therapeutic Monitoring	

OSCE	<ul style="list-style-type: none"> • Geeky Medics • Abdominal Examination - Demonstration - YouTube • Cardiovascular Examination - Demonstration - YouTube • Respiratory Examination - Demonstration - YouTube • Physical Diagnosis Skills - University of Washington School of Medicine
Role Specific	
Cervical Cytology	<ul style="list-style-type: none"> • Guide to the interim assessment • British Association for Cytopathology • Lab Tests Online • Cytology Newsletter
Ear Care	<ul style="list-style-type: none"> • Ear Care Centre • RNID
Wound Management / Compression	<ul style="list-style-type: none"> • Microworld • Tissue Viability Society • The BLS • Medical Adhesive-Related Skin Injuries (MARSI): with a Primary Care Focus - Sponsored by Clinimed (independentnurse.co.uk) • FHCS051 PRINT (hubspotusercontent-eu1.net)
Minor Surgery	
Obtaining Samples / Results	<ul style="list-style-type: none"> • Lab Tests Online
Health Promotion / Health Screening	
Health Promotion / Population Health	<ul style="list-style-type: none"> • Better Health • SHAPE Strategic Health Asset Planning and Evaluation (shapeatlas.net) • Health disparities and health inequalities: applying All Our Health - GOV.UK (www.gov.uk) • Government approach to public health poses 'massive risk', warn leading think tanks (independentnurse.co.uk)
Health Screening	<ul style="list-style-type: none"> • PHE Screening • Why do diagnostics matter? The King's Fund (kingsfund.org.uk)

<i>Continuation of Health Promotion / Health Screening</i>	
PHE / OHID / UKHSA	<ul style="list-style-type: none"> • Knowledge & Library Services • Campaign Resources • Public Health Profiles • Health Publications • Health Profile for England 2021 • English indices of deprivation 2019
NHS Health Check	<ul style="list-style-type: none"> • NHS Health Check
UK GOV Flu / Covid / Bird Flu	<ul style="list-style-type: none"> • Newcastle disease in Norway (www.gov.uk) • Avian influenza in wild birds (www.gov.uk) • Avian influenza (bird flu) in Europe, Russia and the UK (www.gov.uk) • National flu and COVID-19 surveillance reports: 2022 to 2023 season (www.gov.uk) • Coronavirus (COVID-19) Infection Survey, UK: 14 October 2022 (www.gov.uk) • Consensus statements and medium-term projections on COVID-19 (www.gov.uk) • Monkeypox outbreak: epidemiological overview (www.gov.uk)
UK GOV - General Practice	<ul style="list-style-type: none"> • Fit Notes Issued by GP Practices, England, June 2022 (www.gov.uk) • GP out-of-hours syndromic surveillance: weekly bulletins for 2022 (www.gov.uk) • GP in hours: weekly bulletins for 2022 - GOV.UK (www.gov.uk) • Patients Registered at a GP Practice, October 2022 (www.gov.uk)
UK GOV - Secondary Care	<ul style="list-style-type: none"> • Waiting times for suspected and diagnosed cancer patients for August 2022 (www.gov.uk)
UK GOV Deaths / Suicide / Palliative Care	<ul style="list-style-type: none"> • Summary Hospital-level Mortality Indicator (SHMI), Deaths associated with hospitalisation, England, June 2021 – May 2022 (www.gov.uk) • Deaths registered weekly in England and Wales, provisional: week ending 30 September 2022 (www.gov.uk) • Weekly all-cause mortality surveillance: 2022 to 2023 (www.gov.uk)
UK GOV - LTC	<ul style="list-style-type: none"> • Obesity and mortality during the coronavirus pandemic (www.gov.uk)

Surveillance / Syndromic Surveillance	<ul style="list-style-type: none"> • Syndromic surveillance: systems and analyses - GOV.UK (www.gov.uk) • Ambulance Quality Indicators Clinical Outcomes for May 2022 (www.gov.uk) • National ambulance syndromic surveillance: weekly bulletins 2022 (www.gov.uk) • Ambulance Quality Indicators Systems Indicators for September 2022 (www.gov.uk) • A&E attendances and emergency admissions for September 2022 and Quarterly report (Q2) (www.gov.uk) • Provisional Accident and Emergency Quality Indicators for England, August 2022, by provider - GOV.UK (www.gov.uk) • Referrals for first consultant-led outpatient appointments for August 2022 (www.gov.uk) • Syndromic surveillance: weekly summaries for 2022 (www.gov.uk) • Remote health advice: weekly bulletins for 2022 (www.gov.uk) • Emergency department: weekly bulletins for 2022 (www.gov.uk)
UK GOV Infectious Disease Monitoring / NOIDS	<ul style="list-style-type: none"> • UK polio eradication status 'at risk', warns UKHSA nurse (cogora.com) • Notifiable diseases: causative agents reports for 2022 (www.gov.uk) • Notifiable diseases: last 52 weeks (www.gov.uk) • Notifications of infectious diseases (NOIDs)
UK GOV - Mental Health	<ul style="list-style-type: none"> • Mental Health Services Monthly Statistics, Performance July, Provisional August 2022 (www.gov.uk)
Addiction/Smoking	<ul style="list-style-type: none"> • Drink Coach • Stop smoking interventions and services • The end of cigarettes, and the rise of vaping – a whole new problem? (independentnurse.co.uk)
Immunisation / Travel Health	
<ul style="list-style-type: none"> • Joint Committee on Vaccination and Immunisation • Immunisation against infectious disease • West Midlands Immunisation Service • Vaccination of individuals with uncertain or incomplete immunisation status • Immunisation Queries: Immunisation information for Health Care Services within the West Midlands area • Immunisation • Greenbook chapter 2 consent (publishing.service.gov.uk) • Coronavirus » Making the universal offer of vaccination to JCVI cohorts 1-4 ahead of February 15, and additional funding for vaccination of housebound patients (england.nhs.uk) • COVID-19 vaccination programme - GOV.UK (www.gov.uk) • C1685 PGD Spikevax original omicron Covid-19 vaccine • Coronavirus » Primary care guidance (england.nhs.uk) 	

<i>Continuation of Immunisation / Travel Health</i>	
Flu	<ul style="list-style-type: none"> • Flu and flu vaccinations • The national influenza immunisation programme 2021 to 2022 • Flu vaccines for the 2021 to 2022 season poster • Appendix C: Flu vaccinator competency assessment tool • Healthcare assistants and flu vaccinations • Lone workers: how employers should protect them - Overview - HSE • Health leaders urge people to get jabbed ahead of winter (independentnurse.co.uk)
Covid Vaccine	<ul style="list-style-type: none"> • Greenbook COVID-19 chapter 14a • COVID-19 Vaccine Moderna e-learning now available • GP COVID-19 vaccine dashboard • Updates made to the COVID-19 vaccination learning programme • COVID-19 Vaccination Programme (future.nhs.uk) • next steps for the programme (england.nhs.uk) • check out our vaccine web pages (england.nhs.uk) • COVID-19 vaccines (mims.co.uk) • Nearly a quarter of UK health workers hesitant about regular Covid vaccinations (cogora.com)
Children	<ul style="list-style-type: none"> • Encouraging uptake of the HPV vaccine: A guide for nurses (independentnurse.co.uk) • Quarterly vaccination coverage statistics for children aged up to 5 years in the UK (COVER programme): April to June 2022 (lnks.gd) • Low routine vaccination levels for children are 'extremely worrying' (independentnurse.co.uk) • Encouraging uptake of the HPV vaccine: A guide for nurses (independentnurse.co.uk)
Adults	<ul style="list-style-type: none"> • Immunisation patient group direction (PGD) templates • Shingles immunisation programme: introduction of Shingrix® letter
Vaccine Update	<ul style="list-style-type: none"> • Vaccine update: issue 331, August 2022 - GOV.UK (www.gov.uk) • Vaccine update: issue 329, May 2022 - GOV.UK (www.gov.uk) • Vaccine update: issue 328, May 2022, Shingrix® special edition - GOV.UK (www.gov.uk) • Vaccine update: issue 327, May 2022, SCID, TB and BCG special edition (www.gov.uk) • Vaccine update: issue 326, April 2022, HPV special edition - GOV.UK (www.gov.uk) • Vaccine update: issue 325, April 2022, flu special edition - GOV.UK (www.gov.uk)
PGD	<ul style="list-style-type: none"> • Hib/MenC: patient group direction (PGD) template - GOV.UK (www.gov.uk)

Travel Health	<ul style="list-style-type: none"> • Travel Health Pro • Fit for Travel • Travel Health • Jane Chiodini • Corona.Help
Mental Health / Learning Disability / Disability	
Mental Health	<ul style="list-style-type: none"> • Mental Health • Mental Health UK • Mind • Place2b • Rethink Mental Illness • Young Minds • Every Mind Matters • Calm • Headspace • Better Health - Every Mind Matters - Resources • ZSA Training • NHS > Mental Health • Self-Assessment Tool – Check my wellbeing (leadershipacademy.nhs.uk) • Mental Health Helpline for Urgent Help - NHS (www.nhs.uk) • Need urgent help - Mind • Where to get urgent help for mental health - NHS (www.nhs.uk) • Mental health crisis teams - Mind • NHS England » Staff mental health and wellbeing hubs • Physical Health Care For Severe Mental Illness Maudsley Learning • Eating disorder toolkit for school nurses launched in parliament (cogora.com)
Learning Disability	<ul style="list-style-type: none"> • Learning Disabilities • Learning Disability England • Mencap • Bild • Autism • Charlotte's annual health check and health action plan SOCIAL EDIT - YouTube • NHS England » Annual health checks • Mythbuster: 'Autism rarely affects girls – she's probably just anxious' (cogora.com)

Disability (Inc. hearing and visual)	<ul style="list-style-type: none"> • Disability Rights UK • Disability Matters • RNID - National hearing loss charity • Spokzpeople • Sight Loss Data Tool RNIB • Sound Magazine Boots Hearingcare
From Cradle to...	
Infant Health	<ul style="list-style-type: none"> • Tommys • First Steps Nutrition Trust • Bliss • ICON Toolkit • One in ten parents not received any mandated health visiting checks, poll finds (cogora.com)
Child Health	<ul style="list-style-type: none"> • Unicef • Health Professional Academy • Premature Babies • Child and Maternal Health • Women and Child First • Child Health Information Services • Place2b • Childhood eczema • Childhood asthma • Paediatrics for Primary Care (and anyone else) (gppaedstips.blogspot.com) • Urinary tract infections in children: A guide for primary care nurses (independentnurse.co.uk) • Eating disorder toolkit for school nurses launched in parliament (cogora.com)
Adolescent Health	<ul style="list-style-type: none"> • Adolescent Health Programme • Society for Adolescent Health and Medicine • Young Minds

<p>Mens Health</p>	<ul style="list-style-type: none"> • Mens Health Forum • Mens Health Month • Mens health.org • Mens Health UK • Men and mental health • Men's Mental Health Awareness • Prostate Cancer UK • Orchid Fighting Male Cancer • Prostate Cancer UK Facebook Page • Movember • Updates in oncology from GPnotebook (mailchi.mp)
<p>Women's Health</p>	<ul style="list-style-type: none"> • Womens Health Concern • Well Being of Women • Coppa Feel • Menopause Matters • The Menopause Charity • Royal College of Obstetricians and Gynaecologists - Guidelines • Pelvic Partnership • CRUK - Womens Cancer • Breast Cancer Now • Foundation for Women's Cancer • Eve Appeal • Ovarian.Org • Jo's Trust • Well Spring • Know your Lemons • British Menopause Society - <u>www.thebms.org.uk</u> • NHS - <u>www.nhs.uk/conditions/menopause</u> • Henpicked - <u>henpicked.net</u> • The Menopause Exchange - <u>www.menopause-exchange.co.uk</u> • Women's Health Concerns - <u>www.womens-health-concern.org</u> • Menopause Matters - <u>www.menopausematters.co.uk</u> • The Daisy Network - <u>www.daisynetwork.org</u> • Dr Louise Newson's Menopause Doctor - <u>www.menopausedoctor.co.uk</u> • Manage My Menopause - <u>www.managemymenopause.co.uk/menopause-advice</u> • Menopause Support - <u>menopausesupport.co.uk</u> • NICE appoval for oral fibroid treatment (<u>mims.co.uk</u>) • Wound healing I Free Nursing CPD Course Child Health Academy (<u>healthprofessionalacademy.co.uk</u>) • Inquiry to assess the impacts of menopause and the case for policy reform

The Older Population	<ul style="list-style-type: none"> • BGS • Ageing Better • Delirium Champions - YouTube
Carers / Social Care / Care Homes	<ul style="list-style-type: none"> • The Care Provider Alliance • Skills for Care • The Care Workers' Charity • Supporting Adult Carers • The Care UK • See the resources (phe.gov.uk) • Covid-10 PPE guide for adult social care settings • Covid-19 PPE illustrated guide for unpaid carers • Infection prevention and control in adult social care COVID-19 supplement • New donning and doffing illustrated guide
Young Carers	
Complex Needs	
Family Planning & Sexual Health	
Family Planning	<ul style="list-style-type: none"> • Faculty of Sexual and Reproductive Healthcare Education and Training • First contraceptive to contain a synthetic oestrogen now available (mims.co.uk) • Contraceptives, oral and transdermal preparations (mims.co.uk)
Reproductive	<ul style="list-style-type: none"> • Tommys
Sexual Health / Sexual Abuse	<ul style="list-style-type: none"> • Sexual and Reproductive Health Profiles • FSRH Education & Training
Maternity / Neonate health	

Care of Patients with Long Term Conditions	
LTC	<ul style="list-style-type: none"> • Physical Activity for the Prevention and Management of Long-Term Conditions • Health A to Z
Diabetes & Pre-Diabetes	<ul style="list-style-type: none"> • Mumoactive • The mySugr App • PCDS Entry level module series - Foot Check • Type 2 diabetes in adults: management • Starting the conversation about hypoglycaemia in type 2 diabetes: Insights from a patient and primary care perspective - DiabetesontheNet • Sponsored: NG17 – Type 1 diabetes in adults: diagnosis and management (update) (cogora.com) • Insulin delivery devices (mims.co.uk) • Visual guide to diabetes devices: Flash and continuous glucose monitoring sensors (mims.co.uk) • National insulin pen recycling scheme launched (mims.co.uk)
Respiratory	<ul style="list-style-type: none"> • Spirometry: step by step • ARTP • British Lung Foundation • The Primary Care Respiratory Society • Respiratory – Respimat® patient resources Boehringer Ingelheim (boehringer-ingelheim.com) • Respiratory News & Advice (nursinginpractice.com) • Dudley pulmonary rehab - Template PI (dght.nhs.uk) • Greener NHS » Improving health outcomes for respiratory patients while reducing carbon emissions (england.nhs.uk)
COPD	<ul style="list-style-type: none"> • Right Breathe • GOLD COPD 2022 strategy Independent professional body guideline Guidelines
Asthma	<ul style="list-style-type: none"> • Asthma UK • Asthma: diagnosis, monitoring and chronic asthma management • Global Initiative for Asthma • British guideline on the diagnosis and pharmacological management of asthma in children • Sponsored module: Asthma emergencies: simple steps save lives (cogora.com)
Hypertension	<ul style="list-style-type: none"> • British Heart Foundation • Blood Pressure UK • Hypertension in adults: diagnosis and management • Hypertension in adults: diagnosis and treatment • Hypertension: symptoms to look out for and treatment options (rcni.com)

Continuation of Long Term Conditions

CVD/AF	<ul style="list-style-type: none"> • QRISK®3-2018 risk calculator • Heart Rhythm Alliance • CVD risk assessment and management • NHS lipid management pathway NHS guideline Guidelines • NHS England » NHS Community Pharmacy Blood Pressure Check Service
Heart Failure	<ul style="list-style-type: none"> • British Heart Foundation • British Society Guidelines • Pharmacological management of chronic heart failure (rcni.com)
Cancer / Oncology	<ul style="list-style-type: none"> • Surviving Thyroid Cancer • Help Us Help You - Lung Cancer Symptoms • Breast Cancer Now • Macmillian • Bowel Cancer UK • Brain Trust • CRUK • Action Cancer • Foundation for Women's Cancer • NHS England » Cancer
Chronic Kidney Disease	<ul style="list-style-type: none"> • Kidney.Org • Kidney Quality Improvement Partnership
Liver Disease	<ul style="list-style-type: none"> • British Liver Trust • Liver Research • BRITISH ASSOCIATION FOR THE STUDY OF THE LIVER • LIVERnORTH • LIVER DISEASE AND CIRRHOSIS

Continuation of Long Term Conditions




Blood Disorders	<ul style="list-style-type: none"> • Blood Cancer UK • UK Thalassaemia Society • The ITP Support Association • UK-ITP Paediatric ITP Registry • The Haemophilia Society • UK MDS Forum • Pernicious Anaemia Society • Haemochromatosis UK • Oral iron supplements for iron-deficiency states (mims.co.uk)
G.I	<ul style="list-style-type: none"> • GIST Cancer UK • Pernicious Anaemia Society
ENT	
G.U	
ME / CFS / Fibromyalgia	<ul style="list-style-type: none"> • ME Association • ME Research • Action for M.E • Fibromyalgia Action UK • Fibromyalgia UK • Home - Fibromyalgia Awareness UK (fibroawarenessuk.org) • Fibromyalgia - Symptoms, diagnosis and treatment BMJ Best Practice • Fibromyalgia - The Brain Charity
Neurological Conditions	<ul style="list-style-type: none"> • The Brain Tumour Charity • Narcolepsy.Org • ACNR • MS Society UK Information, research and support Multiple Sclerosis Society UK • Home MS Trust • Epilepsy Society

Continuation of Long Term Conditions

<p>Musculoskeletal Conditions</p>	<ul style="list-style-type: none"> • Rheumatology • National Axial Spondyloarthritis Society • Musculoskeletal health • Musculoskeletal health: 5 year prevention strategic framework • Faculty of Occupational Medicine • Guide to embedding your first contact physiotherapy service
<p>Endocrine Disorders / Metabolic Disorders</p>	<ul style="list-style-type: none"> • Society for Endocrinology • Turner Syndrome Support Society • Thyroid Eye Disease • British Thyroid Foundation • Thyroid UK • The Pituitary Foundation • Addisons Disease • Parathyroid UK • The Royal Osteoporosis Society • Metabolic Support UK
<p>Frailty</p>	<ul style="list-style-type: none"> • Recognising frailty • Identifying frailty • CLINICAL FRAILTY SCALE
<p>Dementia / Alzheimers</p>	<ul style="list-style-type: none"> • Dementia UK • Age UK - Understanding Dementia • Delirium Champions • Alzheimers Society • CPD: Managing dementia as a palliative condition (cogora.com)

Continuation of Long Term Conditions

Dermatology	<ul style="list-style-type: none"> • British Association of Dermatologists • Eczema • The British Skin Foundation • Acne vulgaris: management • The Primary Care Dermatology Society • Acne.org • Allergy UK • Urticaria • Hives • Sunburn • Causes of cancer and reducing your risk • What is Rosacea? • Rosecea • The Rosacea Forum • Herpes Viruses Association • Shingles • Fungal Skin Infection - Foot • The Psoriasis Association • National Psoriasis Foundation • Melanoma • Skin Health Information • British Association of Plastic Reconstructive and Aesthetic Surgeons - Procedure Guides • Warts and verrucae • MIMS Clinics • Pigmented skin changes - Registration (gotowebinar.com)
Allergy / Auto-immune / Genetic Conditions	<ul style="list-style-type: none"> • Allergy UK • British Society for Rheumatology • Addisons Disease • Hayfever treatments (mims.co.uk)

<i>Continuation of Long Term Conditions</i>	
Obesity	<ul style="list-style-type: none"> • Obesity UK • Government approach to public health poses 'massive risk', warn leading think tanks (independentnurse.co.uk)
Pain Management	<ul style="list-style-type: none"> • Pain Concern
Osteoporosis / Falls	<ul style="list-style-type: none"> • Calcium and vitamin D supplements for osteoporosis (mims.co.uk)
Genomics	<ul style="list-style-type: none"> • NHS England » Accelerating genomic medicine in the NHS
Multi-Morbidity	<ul style="list-style-type: none"> • Multimorbidity • Multimorbidity / multiple long-term conditions (MLTC)
Minor Illness / First Contact Assessment / OSCE	<ul style="list-style-type: none"> • Fact Sheets - Self Care Forum • OSCE Checklists  (mlsend.com) • OSCE Flashcards  (mlsend.com) • 600+ OSCE Stations ✨ (mlsend.com) • Anatomy Flashcards  (mlsend.com) • Health A to Z
Other / Case Studies	<ul style="list-style-type: none"> • NHS England » 24/7 control centres among new plans to step up NHS winter preparations • NHS England » Going further on our winter resilience plans • Nurses prepare for a tough winter ahead (cogora.com)
End of Life Care	
End of Life Care / Bereavement	<ul style="list-style-type: none"> • ReSPECT for healthcare professionals • Hospice UK

Flu / Covid-19 / Monkeypox	
Covid-19	<ul style="list-style-type: none"> • Covid Live • What's New Updates • The COVID-19 Dashboard Moves to Weekly Updates • Coronavirus » Living with COVID-19 – testing update (england.nhs.uk)
Flu	
Long Covid	<ul style="list-style-type: none"> • Supporting your recovery after COVID-19 • Long Covid Toolkit • Long term effects of COVID (Long COVID) • Post-COVID Syndrome (Long COVID) • COVID-19 Yorkshire Rehabilitation Screening Tool • FOM Guidance
Monkeypox	<ul style="list-style-type: none"> • Monkeypox outbreak: epidemiological overview, 18 October 2022
News & Views	
Digital News / Remote Consultations	<ul style="list-style-type: none"> • Digital Health News Webinars • Digital Health News • NHS Digital • DigiHealthWell • Public Sector Events, Conferences and Training - Inside Government • Digital Transformation • Harnessing digital to deliver system ambitions (digitalhealth.net) • NAO points to digital and data gaps in integrated care systems UKAuthority • [Webinar] How can digital best help an NHS in crisis? (mailchi.mp) • Your daily news updates from Digital Health (campaign-archive.com) • Webinar: Securing the digital identity across connected care systems (mailchi.mp) • Digital Health Networks Newsletter: 17 October 2022 (mailchi.mp)
Pulse / GP Online / HSJ / NB Medical	<ul style="list-style-type: none"> • GP Online • HSJ • Pulse Today

Continuation of News & Views

PSNC News / Pharmacy	<ul style="list-style-type: none"> • National Pharmacy Association • Royal Pharmaceutical Society • Medicines Learning Portal • Specialist Pharmacy Service • October 2022 Price Concessions 2nd Update (mailchi.mp) • PSNC Newsletter: 19th October (mailchi.mp) • PSNC Newsletter: 17th October (mailchi.mp) • PSNC Newsletter: 14th October (mailchi.mp)
Primary Care Update / PCC / PPP	<ul style="list-style-type: none"> • Public Policy Projects News • Primary Care Bulletin
Proactive Care	
Health Care Leaders Newsletters	
Kings Fund	<ul style="list-style-type: none"> • The Kings Fund
World Health Organisation	<ul style="list-style-type: none"> • WHO • OpenWHO • OpenWHO Monthly Newsletter OpenWHO
IHCT / CCG / STP / Healthier Futures	<ul style="list-style-type: none"> • Black Country & West Birmingham CCG • Dudley Integrated Health and Care • Home :: Black Country Healthcare NHS Foundation Trust • Issue 11 - Black Country Primary Care Brief (sharepoint.com) • Issue 10 - Black Country Primary Care Brief (sharepoint.com) • Issue 09 - Black Country primary Care Brief (sharepoint.com) • Staff News
NHSI / NHSE	
University / Student Nurses	
Nurse Guidelines	
The Health Care Leaders Update	<ul style="list-style-type: none"> • Health Care Leader News

Continuation of News & Views

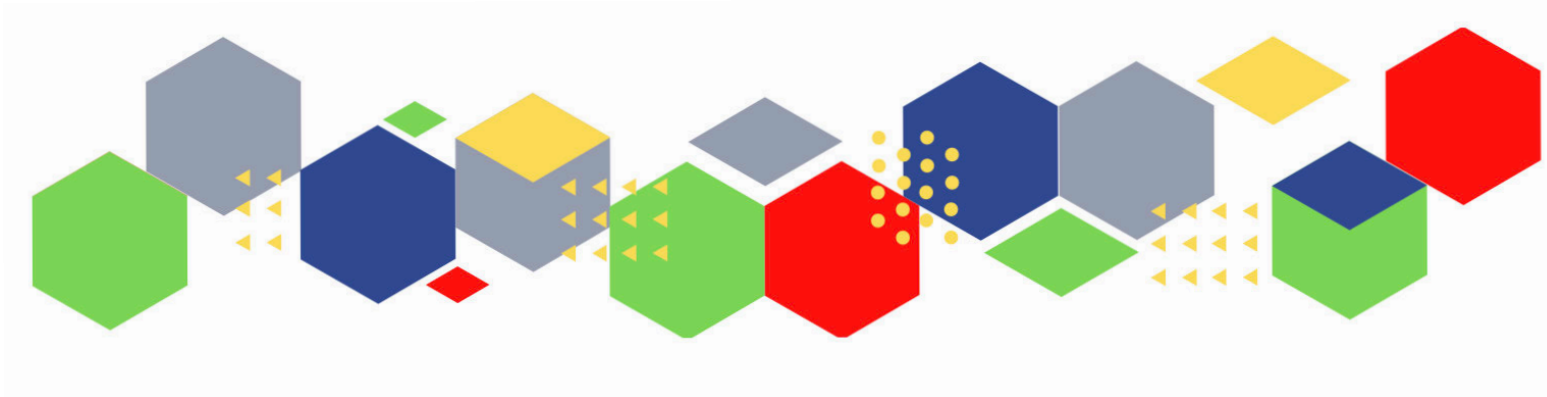
Medisa / Univadis / Geeky Medics / GP Notebook / Medscape	<ul style="list-style-type: none"> • Medisa • Geeky Medics • Medscape Nurses • GP Notebook • Updates in oncology from GPnotebook (mailchi.mp)
The Health Foundation	<ul style="list-style-type: none"> • The Health Foundation • Is poor health driving a rise in economic inactivity? (healthfdn.org.uk) • Health is wealth? REAL Challenge annual lecture - 9 November 2022 (healthfdn.org.uk)
Practice Index	
Innovation Agency	<ul style="list-style-type: none"> • Innovation Agency Exchange
RCN	<ul style="list-style-type: none"> • RCN • Education grants RCN Foundation Royal College of Nursing • Apply for a grant from the RCN • Hardship support: tips for coping with rising energy prices RCN Foundation Royal College of Nursing • a free Will writing service (rcnfoundation.org.uk)
Nursing in Practice / Nursing Standard / Independent Nurse	<ul style="list-style-type: none"> • Nursing Times • Practice Nursing - Explore our brand new website • Journal of General Practice Nursing • Nursing Bulletin • Nursing Clinical • JCN Bulletin • Independent Nurse
QNI	<ul style="list-style-type: none"> • QNI • Talk To Us @ – The Queen's Nursing Institute (qni.org.uk) • Homeless and Inclusion Health Nurses – Practitioners Addressing Inequalities in Health – The Queen's Nursing Institute (qni.org.uk)
NMC	<ul style="list-style-type: none"> • NMC • NMC may consider viability of protecting ANP title, says Andrea Sutcliffe (cogora.com)
CMO / CNO	

Nice	<ul style="list-style-type: none"> • NICE
RCGP / BMA / The Lancet	<ul style="list-style-type: none"> • The Lancet • British Medical Journal • Royal College of General Practitioners
Midlands Academic Health Science Network	<ul style="list-style-type: none"> • WMAHSN Network
Healthwatch	<ul style="list-style-type: none"> • Healthwatch
Other	<ul style="list-style-type: none"> • Patients Association • Civial Service World Newsletter • Why do diagnostics matter? The King's Fund (kingsfund.org.uk)
Free Training / Webinars / Meetings / CPD	
Development / Information and Knowledge	<ul style="list-style-type: none"> • Red Whale Training • Issues & Answers • Issues & Answers - Long Covid Broadcasts • Physical Health Care For Severe Mental Illness Maudsley Learning • Health is wealth? REAL Challenge annual lecture - 9 November 2022 (healthfdn.org.uk) • Lymphoedema Conference - Registration now open (mahealthcareevents.co.uk) • Various dates, October – December. Public participation online learning programme • Various dates, October – November. NHS Jobs engagement events and training sessions • 26 October, 2pm – 3pm. Inclusive HWB Community of Practice - supporting the HWB of ethnic minority staff • 1 and 29 November, 12.30pm – 2pm. Safe, Reliable Processes I and II • 1 November, 9.30am – 4pm. 10 Steps to working with people and communities • 1 November, 1pm – 2pm. Primary Care Discussions: Medication Safety in Primary Care • 2 November, 12.30pm – 1.30pm. Lunch and Learn: Reducing Barriers to Speaking Up • 3 November, 1pm – 2pm. RightCare stroke webinar • 4 November, 1pm – 2pm. GPN National Update: monthly webinar • 8 November, 12pm - 1.15pm. Community Nursing: getting started with Population Health Management • 8 November, 12.30pm - 1.30pm. Moving forward in paediatric critical care • 9 November, 1pm – 2.30pm. Supporting Link Worker Well-being • 9 November, 9am – 5pm. Primary care conference 2022 • 10 November, 11am – 12pm. RightCare Respiratory webinar • 10 November, 12.30pm – 1.30pm. Conversation Session for GPs on the use of the Dementia toolkit • 16 November, 10.30am – 12pm. Supporting our NHS people to reach out and help create a civil and respectful work culture • 16 November, 2pm – 3pm. Wellbeing Wednesday: Winter Wellness • Watch our series of General Practice webinars • Watch our series of Primary Care Network webinars • Starting the conversation about hypoglycaemia in type 2 diabetes: Insights from a patient and primary care perspective - DiabetesontheNet
Free to RCN	<ul style="list-style-type: none"> • RCNi events RCNi • RCN Shropshire AGM and learning event Event Royal College of Nursing • RCN Birmingham East, North and Solihull AGM and learning event Event Royal College of Nursing

MIMMs Learning	
Eventbrite	<ul style="list-style-type: none"> • Impact of GIRFT in the Male LUTS treatment Tickets, Thu 24 Nov 2022 at 09:00 Eventbrite
e-Learning for Health	
Podcasts	<ul style="list-style-type: none"> • The Nursing Handover Podcast • Nursing Standard Podcasts • Nursing Matters • Welcome to the BJN Podcast • Cygnet Health Care Podcast • EBN podcast • This Is Nursing • Teach me, I'm a Nurse • Past Caring • RCGP eLearning podcast • The BMJ Podcast • Primary Care Network podcasts • The Professional Support Unit's Pandemic Podcast • The Next GenCast
YouTube	<ul style="list-style-type: none"> • NHS England • Black Country Healthcare - YouTube
Future Proof Health Training	<ul style="list-style-type: none"> • Training

Continuation of Free Training / Webinars / Meetings / CPD

Blogs/Vlogs	<ul style="list-style-type: none"> • What nurses need to know about sepsis, and how to act (independentnurse.co.uk) • Racism in the NHS is rampant: nurses demand action (independentnurse.co.uk) • Archie Battersbee and the limits of law (independentnurse.co.uk) • Health equity and the UK Health Security Agency - UK Health Security Agency (blog.gov.uk) • Get vaccinated and boost your winter protection - UK Health Security Agency (blog.gov.uk) • Getting tested for an STI: Your guide to how it works - UK Health Security Agency (blog.gov.uk) • STIs: Get tested, get treated - UK Health Security Agency (blog.gov.uk) • COVID-19: the future of UKHSA surveillance - UK Health Security Agency (blog.gov.uk) • The COVID-19 Dashboard Moves to Weekly Updates - UK Security Agency (blog.gov.uk) • The SIREN study: Two years on - UK Health Security Agency (blog.gov.uk) • Clean Air Day – how UKHSA is tackling air pollution, and how you can help - UK Health Security Agency (blog.gov.uk) • Information on monkeypox and our investigation into recent cases - UK Health Security Agency (blog.gov.uk) • A voice to lead: International Nurses Day 2022 - UK Health Security Agency (blog.gov.uk) • An increase in Hepatitis Cases in Children - UK Health Security Agency (blog.gov.uk) • UKHSA'S weekly surveillance report: focusing on 'Pillar 1' data - UK Health Security Agency (blog.gov.uk) • What is Lyme disease, and why do we need to be tick aware? - UK Health Security Agency (blog.gov.uk) • What to do if you have symptoms of a respiratory infection including COVID-19, or a positive COVID-19 test - UK Health Security Agency (blog.gov.uk) • The Office for Health Improvement and Disparities: one year on The King's Fund (kingsfund.org.uk) • Poor NHS buildings mean poor NHS care The King's Fund (kingsfund.org.uk)
BCWB Training Hub	
Evidence based care	
Area Bulletins	
Research	<ul style="list-style-type: none"> • Science Daily • Multimorbidity / multiple long-term conditions (MLTC) • National Institute for Health and Care Research
Freebies	<ul style="list-style-type: none"> • Blue Light Card
Other	



Thank you for reading Future Proof Health's weekly news!

If you missed past issues, please click [here](#) to view them

More information can be found on our website, [here](#)

Don't forget to like us on [Facebook](#) & Follow us on [Twitter](#)

