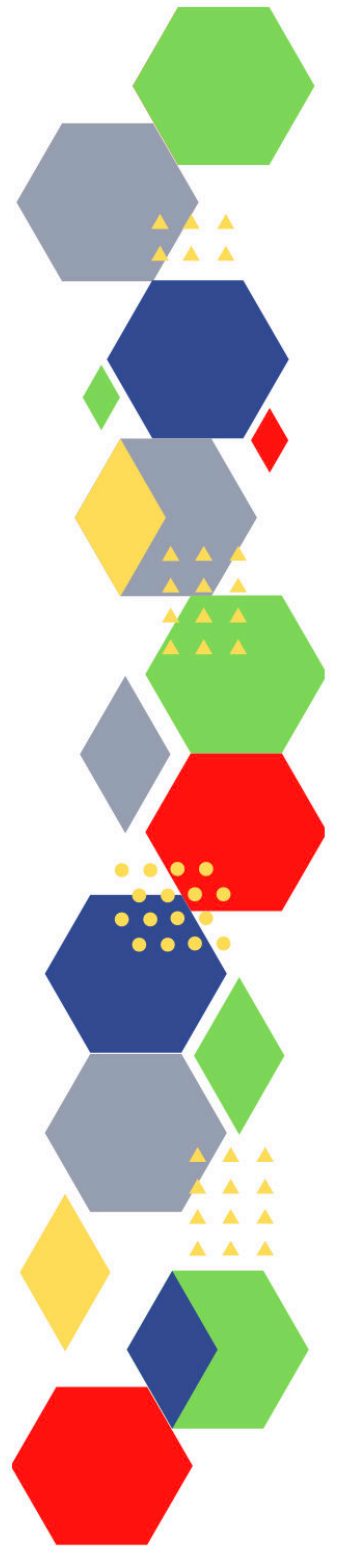
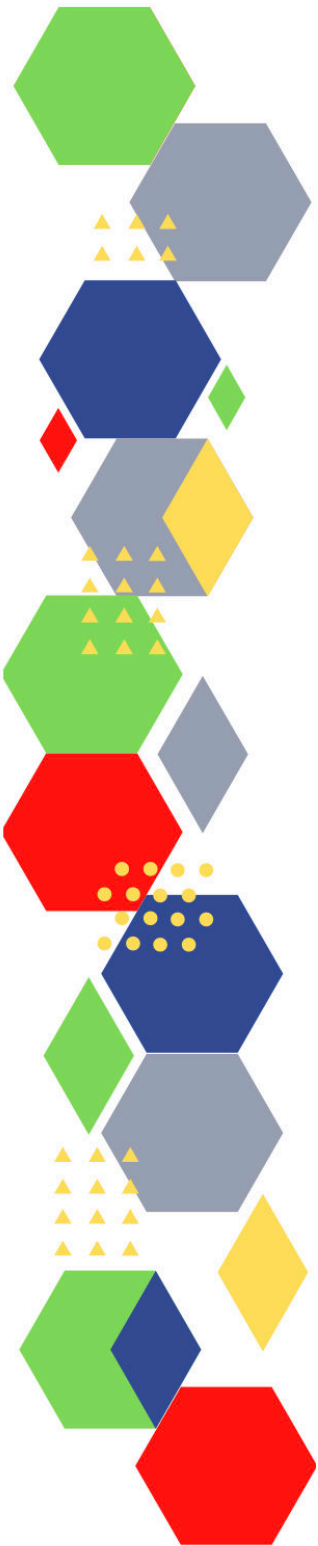




Future Proof Health Presents

Weekly News

15th March 2023



| Communication | |
|--|---|
| Communication with Patients | <ul style="list-style-type: none"> • Staff respect |
| Communication within Teams | |
| Consent / Advocacy / IMCA | |
| People and Personal Development | |
| Personal / People Development / Leadership | <ul style="list-style-type: none"> • Accountability and delegation in practice |
| NHS Employers / HR / NHS Pension | <ul style="list-style-type: none"> • NHS Employers • Pensions Online |
| Health, Safety & Security | |
| | <ul style="list-style-type: none"> • NPSA • Control of Substances Hazardous to Health (COSHH) |
| Gov UK - NHS | |
| CQC | <ul style="list-style-type: none"> • GP mythbusters • YouTube - Care Quality Commission |
| Vaccines / Medications / Prescribing | <ul style="list-style-type: none"> • Protocol for ordering, storing and handling vaccines • A Competency Framework for all Prescribers • Non-medical prescribing • The Human Medicines Regulations 2012 • RCN - Non-medical prescribers • Royal Pharmaceutical Society • Standards for prescribing • Clinical Negligence Scheme for General Practice • Home - electronic medicines compendium (emc) • Drug shortages - live tracker MIMS online • NHS England » Optimising personalised care for adults prescribed medicines associated with dependence or withdrawal symptoms • Polypharmacy learning workshops, planned throughout the year, from April 2023 • NHS England » Pharmacy Manual |

| | |
|--|---|
| MIMS | <ul style="list-style-type: none"> • Prescribing Update • All new products 2023 » (mims.co.uk) • Drug shortages - live tracker (mims.co.uk) • NICE recommends semaglutide for obesity (mims.co.uk) • New MIMS table comparing emergency hormonal contraceptives • Consider innovative interventions instead of potentially addictive drugs, says NHS England (mims.co.uk) • Digital mental health therapies receive initial approval from NICE (mims.co.uk) • Emollients, potential skin sensitisers as ingredients (mims.co.uk) • Insulin preparations (mims.co.uk) • Antidepressants, a guide to switching and withdrawing (mims.co.uk) • Migraine treatments and prophylactics (mims.co.uk) • Hayfever treatments (mims.co.uk) • Visual guide to diabetes devices: Lancets (mims.co.uk) • Dry eye treatments (mims.co.uk) • Topical steroids, comparison of potencies and formulations (mims.co.uk) • Women's health (mims.co.uk) • Emergency hormonal contraceptives (mims.co.uk) • Hormone replacement therapy (HRT) (mims.co.uk) • Contraceptives, oral and transdermal preparations (mims.co.uk) • Treatment options in pregnancy (mims.co.uk) • Levonorgestrel-releasing intrauterine systems (IUS) (mims.co.uk) • Switching to and between combined hormonal contraception (mims.co.uk) • Initiating combined hormonal contraception (mims.co.uk) • Menopause: diagnosis and management (NICE Guideline) (mims.co.uk) • Long-Acting Reversible Contraception (LARC) (NICE Guideline) (mims.co.uk) • New MIMS table comparing emergency hormonal contraceptives • Cheaper HRT payment option to be introduced from 1 April (mims.co.uk) • HRT supply issues continue (mims.co.uk) • Pharmacists to initiate oral contraceptives in NHS pilot (mims.co.uk) • NICE approval for oral fibroid treatment (mims.co.uk) • Combined contraceptives (mims.co.uk) • Contraceptive devices (mims.co.uk) • Depot contraceptives (mims.co.uk) • Emergency contraceptives (mims.co.uk) • Progestogen-only contraceptives (mims.co.uk) • Endometriosis, fibroids (mims.co.uk) • Menopausal disorders (mims.co.uk) • Menorrhagia (mims.co.uk) • Some cough and cold medicines withdrawn 'as precautionary measure' (mims.co.uk) • NICE recommends semaglutide for obesity (mims.co.uk) |
| Antibiotic steward-ship / Anti-microbial resistance | |
| Health Protection Review | |

| | |
|---|---|
| Drug / Device Alerts (MHRA) | <ul style="list-style-type: none"> • Drug Safety Update (mhradrugsafety.org.uk) • MHRA - Class 2 Medicines Recall: Teva UK Limited, Levothyroxine 12.5mcg Tablets, EL (23)A/06 (outlook.com) • MHRA - Class 4 Medicines Defect Information: Thornton & Ross Ltd, Methadone 1mg/mL Oral Solution BP - Sugar Free, Methadone Mixture 1mg/ml , EL(23)A/07 (outlook.com) |
| Emergency Situations | <ul style="list-style-type: none"> • Resuscitation Council UK |
| Infection Control / Infection Statics | <ul style="list-style-type: none"> • NHS England » National infection prevention and control |
| Safe Guarding | <ul style="list-style-type: none"> • Female genital mutilation (FGM) • PREVENT • Child protection system in the UK • Safeguarding Adults • Safeguarding children: detailed information • Domestic abuse victim services, England and Wales: 2022 (www.gov.uk) • Dudley Financial Abuse Alliance - September 2022 (govdelivery.com) • Wolverhampton Safeguarding Together • Female Genital Mutilation, October 2022 – December 2022 (outlook.com) • Modern Slavery: National Referral Mechanism and Duty to Notify statistics UK, end of year summary 2022 (outlook.com) • Modern Slavery: National Referral Mechanism and Duty to Notify statistics UK, October to December 2022 (outlook.com) |
| Practice Policies: Practice Management / Accountability Duty of Candour | <ul style="list-style-type: none"> • The dreaded 8am bottleneck of calls! (outlook.com) – need to sign in |
| Audit | |
| Information Governance / Record Keeping | |
| Quality & Service Improvement | |
| Quality, Service & Improvement | <ul style="list-style-type: none"> • The PRSB • General Practice Assessment Questionnaire (GPAQ) • Healthwatch • NHS Five Year Forward View • General Practice Forward View • NMC • Dr Jon Griffiths Blog • NHS Confed • Health Quality Improvement Partnership |

| | |
|---|---|
| <p>Roles in General Practice Including AHP</p> | <ul style="list-style-type: none"> • Standards for nursing associates • GP mythbuster 57: Health Care Assistants in General Practice • NHS England » Allied Health Professions • GP practice team (phe.gov.uk) • animations about different roles (outlook.com) • 28 March, 10.30am - 4pm. Celebrating Six Years of Nursing Associates (NA) and the difference they make in delivering patient care • 29 March, 1pm – 2.30pm. Health and Wellbeing Coach - share and learn webinar • 22 March, 1.30pm – 3pm. Care Coordinator - share and learn webinar • Advanced nurse practitioner role becomes part of ARRS scheme (cogora.com) • Making the most of the ARRS roles in your practice and PCN • This video explains what social prescribing represents and what this day is all about (createsend1.com) |
| <p>Revalidation</p> | |
| <p>Personal Practice & Development</p> | |
| <p>Practice Management</p> | <ul style="list-style-type: none"> • Institute of General Practice Management • Practice Index |
| <p>EMIS / System One / IT</p> | |
| <p>Recruitment Employment / Retirement / Legacy Nursing</p> | <ul style="list-style-type: none"> • The NHS workforce in England - House of Commons Library (parliament.uk) • NHS has teamed up with Inspiring the Future to inspire children to consider a career in the healthcare service (createsend1.com) • register and commit to a minimum of an hour a year to go into schools and colleges – in person or virtually, to inspire the NHS workforce of the future (createsend1.com) |
| <p>NHS Staff Self Care & Resilience</p> | <ul style="list-style-type: none"> • Samaritans • Mental Health at work • Calm • Supporting our NHS people • The Hub :: Black Country Healthcare NHS Foundation Trust • Leading well for staff health and wellbeing in the NHS (kingsfundmail.org.uk) • NHS employee suicide: a postvention toolkit to help manage the impact and provide support (kingsfundmail.org.uk) • Exploring mental health at work • NHS employee suicide NHS Confederation |
| <p>Supporting International Recruitment in the NHS</p> | |

| | |
|--|--|
| Practice Transformation / Innovation Agency | <ul style="list-style-type: none"> • NHS Providers • NHS England » Medical Workforce Race Equality Standard – a commitment to collaborate; The first five • Remote Consultations (createsend1.com) • Document Workflow (createsend1.com) • Redesigning Appointment Systems (createsend1.com) • Supporting Carers in General Practice (createsend1.com) • Request Support Services Volunteer Responders (nhsvolunteerresponders.org.uk) • 16 March, 10am – 12pm. Flexible working: making it happen • The evolution of provider collaboration (kingsfundmail.org.uk) • How have provider collaboratives been set up? (kingsfundmail.org.uk) • £25 million for women's health hub expansion - GOV.UK (www.gov.uk) |
| Future of NHS / General Practice / NHS Recovery | <ul style="list-style-type: none"> • NHS England • NHS England » Primary care • NHS mandate 2022 to 2023 • Changes to NHS budget • Register with a GP Surgery • Press release CIPFA publishes interesting care report • No more sticking plasters: repairing and transforming the NHS estate (nhsproviders.org) |
| NHS Resolution | |
| NHS 75 | <ul style="list-style-type: none"> • Parkrun for the NHS (outlook.com) • NHS 75 comms toolkit • NHS has teamed up with Inspiring the Future to inspire children to consider a career in the healthcare service (createsend1.com) • register and commit to a minimum of an hour a year to go into schools and colleges – in person or virtually, to inspire the NHS workforce of the future (createsend1.com) |
| ICS / ICB / ICP / PCN Commissioning | <ul style="list-style-type: none"> • NHS England » Integrated care • NHS England » Case studies to support integrated care systems to adopt and spread innovation • Joint capital resource use plans: directions to ICBs and NHS trusts - GOV.UK (www.gov.uk) |
| QOF / PHOF / DES / LES / NHS Contract / CQRS / CQUIN | <ul style="list-style-type: none"> • Learn about the Clinical Characteristics of Convexity in Our Webinar on March 30th! (mahealthcareevents.co.uk) • Using Enhanced Review (SNOMED) codes when giving a patient access to their health record - NHS Digital • NHS England have written to commissioners and GP practices this week outlining contractual arrangements for 2023/24 (createsend1.com) • GP contract 2023/24 revises thresholds for childhood immunisation targets (cogora.com) • Changes to the GP contract in 2023/24 - PCC (pcc-cic.org.uk) |
| Leadership / Innovation | |

| | |
|---|--|
| <p>NHS Confederation</p> | <ul style="list-style-type: none"> • NHS Confederation • Community Network letter on pay award for NHS staff delivering local authority public health contracts NHS Confederation • Infographic What are community health services? This infographic explains the role community health services play in the NHS healthcare system. 12 May 2021 (nhsconfed.org) • Briefing Making the most of urgent community response services Supporting community providers to maximise the potential of urgent community response services and examples of where this is being done well. 30 November 2022 (nhsconfed.org) • Briefing There is no community without people The community healthcare sector is suffering a staffing crisis, which is having a profound impact on service users and the wider NHS. 12 August 2022 (nhsconfed.org) • Briefing Hidden waits: the lasting impact of the pandemic on children's services in the community Community Network spotlights new evidence about backlogs and increasing demand for children and young people's services. 8 April 2022 (nhsconfed.org) |
| <p>Greener NHS</p> | <ul style="list-style-type: none"> • Greener Allied Health Professional hub (england.nhs.uk) • High quality, low-carbon respiratory care • Supporting patients with inhaler choices • NHS England » Carbon reduction plan requirements for the procurement of NHS goods, services and works • Independent Nurse - New dashboard launched to help reduce CO2 emissions from inhalers |
| <p>Personalised Care</p> | |
| <p>Personalised Care / Self Care / Social Prescribing / Health Coaching</p> | <ul style="list-style-type: none"> • Self Care forum • Personalised Care Institute • Personalised care • Social Prescribing Academy |
| <p>Group consultation</p> | |
| <p>Working Differently</p> | |
| <p>Shared Decision Making</p> | <ul style="list-style-type: none"> • Personalised Care Institute |

| Equality & Diversity | |
|--|--|
| Equality & Diversity | <ul style="list-style-type: none"> • Public Health Profiles • Home page - NHS - Race and Health ObservatoryNHS – Race and Health Observatory (nhsrho.org) • Improving health and care- Learn more (nhsrho.org) • Empowering Vulnerable Communities Learn more (nhsrho.org) • Innovating for all- Learn more (nhsrho.org) • Creating equitable environments Learn more (nhsrho.org) • Collaborating globally -Learn more (nhsrho.org) • NHS England » Medical Workforce Race Equality Standard – a commitment to collaborate; The first five |
| Inclusion Health | <ul style="list-style-type: none"> • Health Creation Academic Network • Inequality on the inside |
| Poverty / Homelessness | <ul style="list-style-type: none"> • Crisis • This is Poverty • Tackling poverty and the cost of food (kingsfundmail.org.uk) • Adult social care in England, monthly statistics: March 2023 (outlook.com) • Rough sleeping snapshot in England: autumn 2022 (outlook.com) • LGA: Expand free school meals to save nearly £500 per pupil for under-pressure families (kingsfundmail.org.uk) • Statutory homelessness in England: July to September 2022 (outlook.com) • Tables on rough sleeping - GOV.UK (outlook.com) • Tables on homelessness (outlook.com) • Dashboards on homelessness (outlook.com) • Dashboards on rough sleeping (outlook.com) • Number of UK children in food poverty nearly doubles in a year to 4m (kingsfundmail.org.uk) • Poverty is linked to increased dementia risk, regardless of genetics (cogora.com) |
| Population Health / Health Communities | <ul style="list-style-type: none"> • short course on working with people and communities (createsend1.com) • 23 March, 10am – 3.30pm, Birmingham. The Care Programme: Demonstrating how neighbourhood teams and integrated care deliver better outcomes for people • 16 March, 11am – 12pm. An introduction to working with people and communities • 28 March, 10am – 11am. New statutory guidance on working with people and communities • Innovation sweet spots: food innovation, obesity and food environments (kingsfundmail.org.uk) • Health inequalities position statement (kingsfundmail.org.uk) |
| Thrive Into Work | <ul style="list-style-type: none"> • Thrive into Work • Thrive into Work Referral form |

| | |
|---|--|
| Health Inequalities | <ul style="list-style-type: none"> • NHS News • Health inequalities – from evidence to action • Tackling inequality and disadvantage: key actions policy makers, commissioners and provider organisations can take when developing an approach with a digital component (kingsfundmail.org.uk) • The geographic divide in general health, disability and unpaid care: Census 2021 - Office for National Statistics (kingsfundmail.org.uk) • Sociodemographic inequalities in suicides in England and Wales: 2011 to 2021 (kingsfundmail.org.uk) |
| Trans / Non-binary Health / LGBTQ+ | <ul style="list-style-type: none"> • LGBT Foundation • Surgery staff grab sheet (squarespace.com) • Trans inclusive organisations — TransActual • TransActual - Healthcare • CliniQ |
| Migrant / Refugee Health | <ul style="list-style-type: none"> • THE REFUGEE & MIGRANT CENTRE |
| Traveller / Gypsy / Romany Health | <ul style="list-style-type: none"> • Gypsy Roma and Traveller History and Culture The Traveller Movement • Friends, Families and Travellers (gypsy-traveller.org) |
| Veterans Health | <ul style="list-style-type: none"> • The first call for help takes courage |
| Voluntary / Charity | |
| Management of Emergency Situations | |
| Management of Emergency Situations | |
| 111 / Emergency Care | |
| First Contact | <ul style="list-style-type: none"> • Supporting general practice – Common pitfalls • Paediatrics for Primary Care (and anyone else) (gppaedstips.blogspot.com) |
| Red Flags | |
| Sepsis | <ul style="list-style-type: none"> • Sepsis: recognition, diagnosis and early management • Sepsis guidance implementation advice for adults • Sepsis in Children • Sepsis Trust • quick SEPSIS RELATED ORGAN FAILURE ASSESSMENT • 23 March, 12.30pm – 1.45pm. Sepsis in primary care |

| | |
|--|---|
| Therapeutic Monitoring | |
| OSCE | <ul style="list-style-type: none"> • Geeky Medics • Abdominal Examination - Demonstration - YouTube • Cardiovascular Examination - Demonstration - YouTube • Respiratory Examination - Demonstration - YouTube • Physical Diagnosis Skills - University of Washington School of Medicine |
| Role Specific | |
| Cervical Cytology | <ul style="list-style-type: none"> • Guide to the interim assessment • British Association for Cytopathology • Lab Tests Online • Cervical screening: quarterly coverage data reports 2022 - GOV.UK (www.gov.uk) • FREE: Restarting cervical screening clinics after Covid-19 (outlook.com) – MAY NEED TO REGISTER |
| Ear Care | <ul style="list-style-type: none"> • Ear Care Centre • RNID |
| Wound Management / Compression | <ul style="list-style-type: none"> • Microworld • Tissue Viability Society • The BLS • My Microworld Online • Pilonidal sinus disease • Prevention and management of pressure ulcers (nursinginpractice365.uk)MAY NEED SIGN IN • Wound management in people with dark skin tones (nursinginpractice365.uk) MAY NEED A LOG IN |
| Minor Surgery | |
| Obtaining Samples / Results | <ul style="list-style-type: none"> • Lab Tests Online |
| Health Promotion / Health Screening | |
| Health Promotion / Population Health | <ul style="list-style-type: none"> • Better Health • SHAPE Strategic Health Asset Planning and Evaluation (shapeatlas.net) • NHS public health functions agreement 2022 to 2023 (kingsfundmail.org.uk) • Delay to public health grant will cause 'avoidable and unacceptable' harm (kingsfundmail.org.uk) • Productive healthy ageing profile: 2023 update, Office for Health Improvement and Disparities, 7 March 2023 (kingsfundmail.org.uk) • Public Health Outcomes Framework: March 2023 data update - GOV.UK (kingsfundmail.org.uk) |
| Health Screening | <ul style="list-style-type: none"> • PHE Screening • Cervical screening: quarterly coverage data reports 2022 - GOV.UK (www.gov.uk) |

| | |
|---|--|
| PHE / OHID / UKHSA | <ul style="list-style-type: none"> • Knowledge & Library Services • Campaign Resources • Public Health Profiles • Health Publications • Health Profile for England 2021 • English indices of deprivation 2019 • Health Protection Report volume 17 (2023) (outlook.com) • Community Life Survey 2021/22 - GOV.UK (outlook.com) • Community Life Survey: Testing a model-based method for estimating local-authority-level metrics (outlook.com) |
| NHS Health Check | <ul style="list-style-type: none"> • NHS Health Check • NHS health check quarterly returns: March 2023, Office for Health Improvement and Disparities, 7 March 2023 (kingsfundmail.org.uk) |
| UK GOV Flu / Covid / Bird Flu / Monkey Pox | <ul style="list-style-type: none"> • COVID-19: assessment of swabs available for testing children under 5 years of age (outlook.com) • COVID-19 testing: evaluation of the Automated Workcell (outlook.com) • Monkeypox outbreak: epidemiological overview (outlook.com) • Mpox: transmission, and infectious and incubation periods (outlook.com) • Mpox: adherence and barriers to following isolation guidance (outlook.com) • COVID-19 vaccine monthly surveillance reports (week 39 2021 to week 9 2023) (outlook.com) • Coronavirus (COVID-19) Infection Survey, UK: 3 March 2023 (outlook.com) • National flu and COVID-19 surveillance reports: 2022 to 2023 season (outlook.com) • Coronavirus (Covid-19) infection survey, UK: 3 March 2023, Office for National Statistics, 3 March 2023 (kingsfundmail.org.uk) • National flu and Covid-19 surveillance report: 2 March 2023 (week 9) (kingsfundmail.org.uk) |
| UK GOV - General Practice / Primary Care | <ul style="list-style-type: none"> • GP out-of-hours syndromic surveillance: weekly bulletins for 2023 - GOV.UK (outlook.com) • GP in-hours: weekly bulletins for 2023 (outlook.com) • Waiting times for suspected and diagnosed cancer patients for December 2022 (outlook.com) Waiting times for suspected and diagnosed cancer patients, Q3 2022/23 (Provider based) (outlook.com) • NHS Continuing Healthcare and NHS-funded Nursing Care for Q1 2022/23 (outlook.com) |
| UK GOV Deaths / Suicide / Palliative Care / Mortality / End of Life | <ul style="list-style-type: none"> • Child and infant mortality in England and Wales: 2021 (outlook.com) • Weekly all-cause mortality surveillance: 2022 to 2023 (outlook.com) • Deaths registered weekly in England and Wales, provisional: week ending 17 February 2023 - GOV.UK (outlook.com) • Excess mortality in England analysis (kingsfundmail.org.uk) • Mortality profile: March 2023, Office for Health Improvement and Disparities, 7 March 2023 (kingsfundmail.org.uk) |

UK GOV - Secondary Care

- [Diagnostic imaging dataset for October 2022 - GOV.UK \(outlook.com\)](#)
- [Diagnostic waiting times and activity for June 2022 \(outlook.com\)](#)
- [Referral to treatment waiting times statistics for consultant-led elective care for October 2022 \(outlook.com\)](#)
- [Consultant-led outpatient referrals for June 2022 \(outlook.com\)](#)
- [Diagnostic imaging dataset for August 2022 and Annual 2021/22 \(outlook.com\)](#)
- [Referrals for first consultant-led outpatient appointments for October 2022 \(outlook.com\)](#)
- [Diagnostic imaging dataset for April 2022 \(outlook.com\)](#)
- [NHS Cancelled Elective Operations, Q1 2022/23 \(outlook.com\)](#)
- [Diagnostic waiting times and activity for June 2022 \(outlook.com\)](#)
- [Diagnostic waiting times and activity for February 2022 \(outlook.com\)](#)
- [Diagnostic imaging dataset for June 2021 \(outlook.com\)](#)
- [Diagnostic waiting times and activity for January 2022 \(outlook.com\)](#)
- [Referral to treatment waiting times statistics for consultant-led elective care for October 2022 \(outlook.com\)](#)
- [Consultant-led outpatient referrals for June 2022 \(outlook.com\)](#)
- [Diagnostic imaging dataset for August 2022 and Annual 2021/22 \(outlook.com\)](#)
- [Referrals for first consultant-led outpatient appointments for October 2022 \(outlook.com\)](#)
- [Diagnostic imaging dataset for April 2022 \(outlook.com\)](#)
- [NHS Cancelled Elective Operations, Q1 2022/23 \(outlook.com\)](#)
- [Referrals for first consultant-led outpatient appointments for November 2022 - GOV.UK \(outlook.com\)](#)
- [Bed availability and occupancy data for Q1 2022/23 \(outlook.com\)](#)
- [Bed availability and occupancy data for Q1 2022/23 \(outlook.com\)](#)
- [Diagnostic waiting times and activity for November 2022 \(outlook.com\)](#)
- [Diagnostic imaging dataset for September 2022 \(outlook.com\)](#)
- [Referral to treatment waiting times statistics for consultant-led elective care for November 2022 - GOV.UK \(outlook.com\)](#)
- [Diagnostic waiting times and activity for December 2022 \(outlook.com\)](#)
- [National Wheelchair Data Collection Quarterly Publication Q3 2022/23 \(outlook.com\)](#)
- [NHS Cancelled Elective Operations – Q3 2022/23 \(outlook.com\)](#)
- [Referrals for first consultant-led outpatient appointments for December 2022 \(outlook.com\)](#)
- [Referral to treatment waiting times statistics for consultant -led elective care for January 2022 \(outlook.com\)](#)
- [Diagnostic imaging dataset for November 2021 \(outlook.com\)](#)
- [Diagnostic imaging dataset for May 2021 - GOV.UK \(outlook.com\)](#)
- [Referrals for first consultant-led outpatient appointments for August 2021 \(outlook.com\)](#)
- [National Wheelchair Data Collection Quarterly Publication Q1 2022/23 \(outlook.com\)](#)
- [Referrals for first consultant-led outpatient appointments for February 2022 \(outlook.com\)](#)
- [Referral to treatment waiting times statistics for consultant -led elective care for August 2021 \(outlook.com\)](#)
- [Diagnostic waiting times and activity for August 2021 \(outlook.com\)](#)
- [Diagnostic waiting times and activity for June 2022 \(outlook.com\)](#)

| | |
|--|--|
| <p>UK GOV - Secondary Care continued</p> | <ul style="list-style-type: none"> • Consultant-led outpatient referrals for June 2022 (outlook.com) • Diagnostic imaging dataset for August 2022 and Annual 2021/22 (outlook.com) • Referral to treatment waiting times statistics for consultant-led elective care for October 2022 (outlook.com) • Referrals for first consultant-led outpatient appointments for October 2022 (outlook.com) • Diagnostic imaging dataset for April 2022 (outlook.com) • NHS Cancelled Elective Operations, Q1 2022/23 (outlook.com) |
| <p>UK GOV - LTC - including cancer</p> | <ul style="list-style-type: none"> • Musculoskeletal health local profiles: March 2023 update - GOV.UK (kingsfundmail.org.uk) • INteractive Health Atlas of Lung conditions in England (INHALE): March 2023 update, Office for Health Improvement and Disparities, 7 March 2023 (kingsfundmail.org.uk) • Liver disease profiles: March 2023 update, Office for Health Improvement and Disparities, 7 March 2023 (kingsfundmail.org.uk) • Waiting times for suspected and diagnosed cancer patients for February 2022 (outlook.com) • Waiting times for suspected and diagnosed cancer patients for November 2022 (outlook.com) • Waiting times for suspected and diagnosed cancer patients, Q3 2022/23 (Commissioner based) (outlook.com) • Waiting times for suspected and diagnosed cancer patients for December 2022 (outlook.com) • Waiting times for suspected and diagnosed cancer patients, Q3 2022/23 (Provider based) (outlook.com) |
| <p>Surveillance / Syndromic Surveillance</p> | <ul style="list-style-type: none"> • Syndromic surveillance: weekly summaries for 2023 - GOV.UK (outlook.com) |
| <p>Ambulance / Remote Health / 111 / Urgent Care / A&E</p> | <ul style="list-style-type: none"> • Ambulance Quality Indicators Clinical Outcomes for November 2021 (outlook.com) • Ambulance Quality Indicators Systems Indicators for March 2022 - GOV.UK (outlook.com) • Ambulance Quality Indicators Systems Indicators for February 2022 (outlook.com) • A&E attendances and emergency admissions for February 2022 (outlook.com) • Remote health advice: weekly bulletins for 2023 (outlook.com) • National ambulance syndromic surveillance: weekly bulletins 2023 (outlook.com) • Integrated Urgent Care Aggregate Data Collection (IUC ADC) for January 2022 (outlook.com) • Integrated Urgent Care Aggregate Data Collection (IUC ADC) – for February 2022 (provisional statistics) (outlook.com) • Ambulance Quality Indicators Clinical Outcomes for October 2021 (outlook.com) • Emergency department: weekly bulletins for 2023 (outlook.com) • A&E attendances and emergency admissions for March 2022 and Quarterly report (Q4) - GOV.UK (www.gov.uk) • Ambulance Quality Indicators Clinical Outcomes for September 2022 (outlook.com) • Integrated Urgent Care Aggregate Data Collection (IUC ADC) – for September 2021 (provisional statistics) (outlook.com) • Integrated Urgent Care Aggregate Data Collection (IUC ADC) – for December 2022 (Provisional statistics) (outlook.com) • 2-hour Urgent Community Response Performance metrics for October 2022 (provisional), and September 2022 (final) (outlook.com) • Integrated Urgent Care Aggregate Data Collection (IUC ADC) for December 2022 (Official statistics) (outlook.com) • Ambulance Quality Indicators Systems Indicators for January 2023 (outlook.com) • A&E attendances and emergency admissions for December 2022 and Quarterly report (Q3) (outlook.com) • More than half of ambulance workers have seen patient die because of delay (kingsfundmail.org.uk) |
| <p>UK GOV - Mental Health / Learning Difficulties</p> | <ul style="list-style-type: none"> • Children and Young People Eating Disorder Collection Q3 2022/23 (outlook.com) • Children and Young People Eating Disorder Collection Q1 2021/22 (outlook.com) • Physical Health Checks for People with Serious Mental Illness Q3 2022/23 (outlook.com) • Mental health services monthly statistics: performance December 2022, provisional January 2023, NHS Digital, 9 March 2023 (kingsfundmail.org.uk) |

| | |
|---|--|
| <p>UK GOV Infectious Disease Monitoring / NOIDS</p> | <ul style="list-style-type: none"> • Enterococcus spp. bacteraemia: voluntary surveillance 2021 (outlook.com) • Notifiable diseases: causative agents reports for 2023 (outlook.com) • MRSA bacteraemia: monthly data by location of onset (outlook.com) E. coli bacteraemia: monthly data by location of onset (outlook.com) • MRSA, MSSA, Gram-negative bacteraemia and CDI: 30-day all-cause fatality (outlook.com) • NHS Workforce Statistics, November 2022 (outlook.com) • P. aeruginosa bacteraemia: monthly data by location of onset (outlook.com) • Klebsiella species bacteraemia: monthly data by location of onset (outlook.com) • C. difficile infection: monthly data by prior trust exposure (outlook.com) MSSA bacteraemia: monthly data by location of onset (outlook.com) • Measles, mumps and rubella: lab-confirmed cases in England 2022 (outlook.com) • Pertussis: laboratory confirmed cases reported in England 2022 (outlook.com) • Diphtheria: cases among asylum seekers in England, 2022 and 2023 (outlook.com) • National norovirus and rotavirus surveillance reports: 2022 to 2023 season (outlook.com) • Bird flu (avian influenza): cases in wild birds (outlook.com) • Notifiable diseases: last 52 weeks (outlook.com) • Notifiable diseases: weekly reports for 2023 (outlook.com) • Group A streptococcal infections: activity during the 2022 to 2023 season (outlook.com) • National norovirus and rotavirus report, week 10 report: data up to week 8 (26 February 2023), UK Health Security Agency, 9 March 2023 (kingsfundmail.org.uk) |
| <p>Addiction/Smoking</p> | <ul style="list-style-type: none"> • Drink Coach • Stop smoking interventions and services • Talk to Frank • Statistics on NHS Stop Smoking Services in England April 2022 to June 2022 (outlook.com) • NHS England » Optimising personalised care for adults prescribed medicines associated with dependence or withdrawal symptoms • devised actions to help systems develop plans that can support people who are taking medicines associated with dependence and withdrawal symptoms (createsend1.com) • Local alcohol profiles for England: March 2023 update, Office for Health Improvement and Disparities, 7 March 2023 (kingsfundmail.org.uk) • Local tobacco control profiles: March 2023 update, Office for Health Improvement and Disparities, 7 March 2023 (kingsfundmail.org.uk) |

Immunisation / Travel Health

- [Joint Committee on Vaccination and Immunisation](#)
- [Immunisation against infectious disease](#)
- [West Midlands Immunisation Service](#)
- [Vaccination of individuals with uncertain or incomplete immunisation status](#)
- [Immunisation Queries: Immunisation information for Health Care Services within the West Midlands area](#)
- [Immunisation](#)
- [WHAT CAN YOU DO TO HELP PROTECT GIRLS AND BOYS THAT MISSED THEIR HPV VACCINATION IN SCHOOL?](#)

| | |
|----------------|--|
| Flu | <ul style="list-style-type: none"> • Flu and flu vaccinations • The national influenza immunisation programme 2021 to 2022 • Flu vaccines for the 2021 to 2022 season poster • Appendix C: Flu vaccinator competency assessment tool • Healthcare assistants and flu vaccinations |
| Covid Vaccine | <ul style="list-style-type: none"> • Greenbook COVID-19 chapter 14a • COVID-19 Vaccine Moderna e-learning now available • GP COVID-19 vaccine dashboard • Updates made to the COVID-19 vaccination learning programme • Covid-19 vaccine surveillance report: 2 March 2023 (week 9), UK Health Security Agency, 2 March 2023 (kingsfundmail.org.uk) |
| Children | <ul style="list-style-type: none"> • Child Health Information Services Local Government Association • Childhood vaccines: parental attitudes survey 2022 findings • Child imms - QOF (outlook.com) – sign in needed • The PIP Talks - Diphtheria and Pertussis • The PIP Talks - Haemophilus influenzae type B and Polio • Rotavirus and hepatitis B • Meningococcal and pneumococcal disease • Communication and vaccine confidence • Measles, mumps and rubella • Public Health & Immunisations (outlook.com)-MAY NEED TO REGISTER |
| Adults | <ul style="list-style-type: none"> • Immunisation patient group direction (PGD) templates • Shingles immunisation programme: introduction of Shingrix® letter |
| Vaccine Update | <ul style="list-style-type: none"> • Vaccine update: issue 332, October 2022, flu special edition - GOV.UK (www.gov.uk) • Vaccine update: issue 333, December 2022 - GOV.UK (www.gov.uk) • Vaccine update: issue 334, January 2023 (outlook.com) • Vaccine update: issue 335, February 2023 (outlook.com) |
| PGD | |

| | |
|---|--|
| Travel Health | <ul style="list-style-type: none"> • Travel Health Pro • Fit for Travel • Travel Health • Jane Chiodini • Corona.Help • Mosquitoes: more than just a bite (nursinginpractice365.uk) MAY NEED SUBSCRIPTION |
| Mental Health / Learning Disability / Disability | |
| Mental Health | <ul style="list-style-type: none"> • Mental Health • Mental Health UK • Mind • Place2b • Rethink Mental Illness • Young Minds • Every Mind Matters • Calm • Headspace • Better Health - Every Mind Matters - Resources • ZSA Training • NHS > Mental Health • FREE - NEW: PTSD: A nurse perspective (outlook.com) MAY NEED TO REGISTER |
| Learning Disability | <ul style="list-style-type: none"> • Learning Disabilities • Learning Disability England • Mencap • Bild • Autism |
| Disability (Inc. hearing and visual) | <ul style="list-style-type: none"> • Disability Rights UK • Disability Matters • RNID - National hearing loss charity • Spokzpeople • Sight Loss Data Tool RNIB • NHS England » What to do if the newborn blood spot failsafe solution (NBSFS) is unavailable |

From Cradle to...

| | |
|--------------------------|--|
| <p>Infant Health</p> | <ul style="list-style-type: none"> • Tommys • First Steps Nutrition Trust • Bliss • ICON Toolkit • Sandwell - BC - ICB Primary Care - 7 minute briefing • LGA: Expand free school meals to save nearly £500 per pupil for under-pressure families (kingsfundmail.org.uk) • Number of UK children in food poverty nearly doubles in a year to 4m (kingsfundmail.org.uk) • Diabetes in Children (nursinginpractice365.uk) -MAY NEED A LOG IN • NHS England » National primary care clinical pathway for constipation in children |
| <p>Child Health</p> | <ul style="list-style-type: none"> • Unicef • Health Professional Academy • Premature Babies • Child and Maternal Health • Women and Child First • Child Health Information Services • Place2b • Childhood eczema • Childhood asthma • Paediatrics for Primary Care (and anyone else) (gppaedstips.blogspot.com) • Barnardos • Childrens Society • Action for Children • Hospital tooth extractions in 0 to 19 year olds: 2022 (outlook.com) • Childhood vaccines: parental attitudes survey 2022 (outlook.com) • Child health profiles: 2023, Office for Health Improvement and Disparities, 7 March 2023 (kingsfundmail.org.uk) • Children's Mental Health Services 2021-22 |
| <p>Adolescent Health</p> | <ul style="list-style-type: none"> • Adolescent Health Programme • Society for Adolescent Health and Medicine • Young Minds |

| | |
|-----------------------|---|
| <p>Mens Health</p> | <ul style="list-style-type: none"> • Mens Health Forum • Mens Health Month • Mens health.org • Mens Health UK • Men and mental health • Men's Mental Health Awareness • Prostate Cancer UK • Orchid Fighting Male Cancer • Prostate Cancer UK Facebook Page • Movember |
| <p>Women's Health</p> | <ul style="list-style-type: none"> • Womens Health Concern • Well Being of Women • Coppa Feel • Menopause Matters • The Menopause Charity • Royal College of Obstetricians and Gynaecologists - Guidelines • Pelvic Partnership • CRUK - Womens Cancer • Breast Cancer Now • Foundation for Women's Cancer • Eve Appeal • Ovarian.Org • Jo's Trust • Well Spring • Know your Lemons • British Menopause Society - www.thebms.org.uk • NHS - www.nhs.uk/conditions/menopause • Henpicked - henpicked.net • The Menopause Exchange - www.menopause-exchange.co.uk • Women's Health Concerns - www.womens-health-concern.org • Menopause Matters - www.menopausematters.co.uk • The Daisy Network - www.daisynetwork.org • Dr Louise Newson's Menopause Doctor - www.menopausedoctor.co.uk • Manage My Menopause - www.managemymenopause.co.uk/menopause-advice • Menopause Support - menopausesupport.co.uk • Bourne2Care • Hundreds of thousands of women experiencing menopause symptoms to get cheaper HRT (kingsfundmail.org.uk) • Save the date: Putting a spotlight on women's health (kingsfundmail.org.uk) • Supporting patients with Endometriosis (nursinginpractice365.uk) MAY NEED TO LOG IN |

| | |
|--|---|
| <p><i>Women's health continued</i></p> | <ul style="list-style-type: none"> • Endometriosis, fibroids (mims.co.uk) • Menopausal disorders (mims.co.uk) • Menorrhagia (mims.co.uk) • Hormone replacement therapy (HRT) (mims.co.uk) • Menopause: diagnosis and management (NICE Guideline) (mims.co.uk) • Cheaper HRT payment option to be introduced from 1 April (mims.co.uk) • HRT supply issues continue (mims.co.uk) • NICE approval for oral fibroid treatment (mims.co.uk) • £25 million for women's health hub expansion - GOV.UK (www.gov.uk) |
| <p>The Older Population</p> | <ul style="list-style-type: none"> • BGS • Ageing Better • Delirium Champions - YouTube • "The crisis in the NHS is largely a crisis in older people's preventive care, and if we're to avoid another catastrophic winter in nine months' time we need to act now to fix it" warns Age UK • Older people are often waiting far too long for the social care they need (kingsfundmail.org.uk) |
| <p>Carers / Social Care / Care Homes</p> | <ul style="list-style-type: none"> • The Care Provider Alliance • Skills for Care • The Care Workers' Charity • Supporting Adult Carers • The Care UK • County Councils Network • BREAKING NEWS from The Carer (ourmailsender4.com) • Social care 360 The King's Fund (kingsfund.org.uk) • Discover the use of the CoolCare digital system at Read House (ourmailsender4.com) • Read Issue 138 of The Carer Digital Now! (ourmailsender4.com) • BREAKING NEWS from The Carer (ourmailsender4.com) • NHS England » Millions of patients to benefit from care at home thanks to NHS community response teams • Adult Social Care Update |
| <p>Young Carers</p> | |

Family Planning & Sexual Health

| | |
|--|--|
| Family Planning | <ul style="list-style-type: none"> • Faculty of Sexual and Reproductive Healthcare Education and Training • New MIMS table comparing emergency hormonal contraceptives • Emergency hormonal contraceptives (mims.co.uk) • Contraceptives, oral and transdermal preparations (mims.co.uk) • Levonorgestrel-releasing intrauterine systems (IUS) (mims.co.uk) • Switching to and between combined hormonal contraception (mims.co.uk) • Initiating combined hormonal contraception (mims.co.uk) • Long-Acting Reversible Contraception (LARC) (NICE Guideline) (mims.co.uk) • New MIMS table comparing emergency hormonal contraceptives • Pharmacists to initiate oral contraceptives in NHS pilot (mims.co.uk) • Combined contraceptives (mims.co.uk) • Contraceptive devices (mims.co.uk) • Depot contraceptives (mims.co.uk) • Emergency contraceptives (mims.co.uk) |
| Reproductive | <ul style="list-style-type: none"> • Tommys |
| Sexual Health / Sexual Abuse | <ul style="list-style-type: none"> • Sexual and Reproductive Health Profiles • FSRH Education & Training |
| Maternity / Neonate health | <ul style="list-style-type: none"> • Treatment options in pregnancy (mims.co.uk) • Treating asthma in the breastfeeding mother - Earn CPD points - Nursing In Practice 365 FREE MAY NEED SIGN I • Pregnant women impacted by clinicians' reluctance to prescribe medication (cogora.com) |
| Care of Patients with Long Term Conditions | |
| LTC | <ul style="list-style-type: none"> • Physical Activity for the Prevention and Management of Long-Term Conditions • Health A to Z |

Continuation of Long Term Conditions

| | |
|------------------------------------|---|
| <p>Diabetes & Pre-Diabetes</p> | <ul style="list-style-type: none"> • Mumoactive • The mySugr App • PCDS Entry level module series - Foot Check • Type 2 diabetes in adults: management • DiabetesontheNet Online diabetes journals, education and resources for healthcare professionals. • Healthy Living • Diabetes and Ramadan Fasting Diabetes UK • Tuesday 23 May - 1pm-3pm: Diabetes → (chronicconditions.co.uk) • Focus on: Ramadan GPnotebook Resources • NICE now recommends taking a risk-based approach to T2D management. • FREE - NEW: Diabetes in Children (outlook.com) - MAY NEED SIGN IN • Ramadan Compendium • Advising patients with existing conditions about fasting during Ramadan • Managing Diabetes during Ramadan • Ramadan - implications for patients with type 2 diabetes • JARDIANCE Initiation & Management Guide • Gaining back control of type 2 diabetes post-pandemic (nursinginpractice365.uk) MAY NEED LOG IN • Diet & Type 2 Diabetes Remission: the latest evidence, outcomes & practical guidance (nursinginpractice365.uk) MAY NEED SUBSCRIPTION • Innovating effectiveness in type 2 diabetes management: Let's talk about tackling the covid-backlog (nursinginpractice365.uk) FREE - MAY NEED SIGN IN |
| <p>Respiratory</p> | <ul style="list-style-type: none"> • Spirometry: step by step • ARTP • British Lung Foundation • The Primary Care Respiratory Society • Respiratory – Respimat® patient resources Boehringer Ingelheim (boehringer-ingelheim.com) • Respiratory News & Advice (nursinginpractice.com) • Dudley pulmonary rehab - Template PI (dgft.nhs.uk) • Friday 12 May - 1pm-3pm: Respiratory → (chronicconditions.co.uk) • REGISTER HERE for Take a BREATH! – COPD: Assessment and Management (outlook.com)PART 1 – Take a BREATH! – COPD: Assessment and Management • Respiratory (outlook.com)- MAY NEED TO REGISTER • Novel guidance for treating pneumonia released (cogora.com) • Nursing in Practice Virtual - Respiratory - Nursing In Practice 365 • New patients pathway for suspected obstructive sleep apnoea/hypopnoea, how to diagnose and manage in primary care (nursinginpractice365.uk) MAY NNEED LOG IN • Spirometry Interpretation - the fundamentals (nursinginpractice365.uk) MAY NEED SUBSCRIPTION • Obstructive sleep apnoea/hypopnoea syndrome • Independent Nurse - New dashboard launched to help reduce CO2 emissions from inhalers • Interactive Health Atlas of Lung conditions in England (INHALE): March 2023 update - GOV.UK (kingsfundmail.org.uk) • The overlap between asthma and COPD: a case study (independentnurse.co.uk) |

Continuation of Long Term Conditions

| | |
|--------------|---|
| COPD | <ul style="list-style-type: none"> • Right Breathe • GOLD COPD 2022 strategy Independent professional body guideline Guidelines • Webinar: Moving forwards after a COPD diagnosis (nursinginpractice365.uk) MAY NEED SUBSCRIPTION • Webinar: Diagnosis and management of COPD (nursinginpractice365.uk) MAY NEED SUBSCRIPTION • Triexo Infographic • Post Covid COPD Patient Review • Triexo Patient Discussion Guide • comorbid-conditions (trixeo.co.uk) • non-pharmacological-and-pharmacological-interventions-in-copd (trixeo.co.uk) • oral-steroids-and-antibiotics (trixeo.co.uk) |
| Asthma | <ul style="list-style-type: none"> • Asthma UK • Asthma: diagnosis, monitoring and chronic asthma management • Global Initiative for Asthma • British guideline on the diagnosis and pharmacological management of asthma in children • British Thoracic Society guidelines for home oxygen use in adults: accredited by NICE • SIGN and BTS management of asthma in children guideline Independent professional body guideline Guidelines • Asthma: sufferers skip doses due to expense (independentnurse.co.uk) • RCN calls for action to curb record asthma deaths (independentnurse.co.uk) • REGISTER HERE for Breathe EASY! – Asthma: Assessment and Management (outlook.com) • FeNO testing in the diagnosis and management of asthma (nursinginpractice365.uk) MAY NEED SUBSCRIPTION • Treating asthma in the breastfeeding mother - Earn CPD points - Nursing In Practice 365 FREE MAY NEED SIGNIN • Webinar: Real-world practice – managing complexities of asthma (nursinginpractice365.uk) MAY NEED SUBSCRIPTION • Conducting a comprehensive asthma review (nursinginpractice365.uk) MAY NEED SUBSCRIPTION |
| Hypertension | <ul style="list-style-type: none"> • British Heart Foundation • Blood Pressure UK • Hypertension in adults: diagnosis and management • Hypertension in adults: diagnosis and treatment • Hypertension: symptoms to look out for and treatment options (rcni.com) • Hypertension – what's new from NICE's updated guidance? (nursinginpractice365.uk) – MAY NEED TO LOG IN |

| | |
|------------------------|---|
| CVD/AF/DVT | <ul style="list-style-type: none"> • QRISK®3-2018 risk calculator • Heart Rhythm Alliance • CVD risk assessment and management • NHS lipid management pathway NHS guideline Guidelines • Act F.A.S.T – Stroke campaign • Tuesday 16 May - 1pm-3pm: Cardiovascular → (chronicconditions.co.uk) • REGISTER HERE for The Modern management of Atrial Fibrillation ON-DEMAND (outlook.com) • Improving detection and management of atrial fibrillation (outlook.com) MAY NEED TO REGISTER • Lipid management pathways - The AHSN Network • Government to consider radical new approach to prevent life-threatening cardiovascular disease - GOV.UK (www.gov.uk) • Improving detection and management of atrial fibrillation (nursinginpractice365.uk) MAY NEED LOG IN • NHS England publish updated DOAC recommendations • In Review: angina and coronary artery disease (nursinginpractice365.uk) MAY NEED LOG IN • Case Study: Improving outcomes for people at risk of/ with cardiovascular disease (IMpulse CVD) - WMAHSN |
| Heart Failure | <ul style="list-style-type: none"> • British Heart Foundation • British Society Guidelines • Home - Pumping Marvellous • Heart Failure UK Guidelines • Educational Module 1 – Signs, symptoms and the differential diagnosis of hypertrophic cardiomyopathy - HCM Academy (thehcmacademy.com)login needed • Educational Module 2 – Hypertrophic cardiomyopathy patients over time: what are they at risk of and why? - HCM Academy (thehcmacademy.com) login needed • Educational Module 3 - Treatment for heart failure symptoms and atrial fibrillation - HCM Academy (thehcmacademy.com) login needed • Educational Module 4 – Sudden death prevention – how do we do it? - HCM Academy (thehcmacademy.com) login needed • Educational Module 5 - Family screening for hypertrophic cardiomyopathy - HCM Academy (thehcmacademy.com) login needed • Educational Module 6 - Lifestyle considerations for your HCM patient - HCM Academy (thehcmacademy.com) login needed • REGISTER HERE for ECHO Interpretation and reports made easy (outlook.com) • REGISTER HERE for The breathless patient DEMYSTIFIED (outlook.com) |
| Chronic Kidney Disease | <ul style="list-style-type: none"> • Kidney.Org • Kidney Quality Improvement Partnership • Friday 19 May - 1pm-3pm: Renal → (chronicconditions.co.uk) • REGISTER HERE for ON-DEMAND - Part 1 Hyperkalaemia in Chronic Kidney Disease (outlook.com) • REGISTER HERE for Part 2 Hyperkalaemia in Heart Failure (outlook.com) • REGISTER HERE for Part 3 Practical case studies in the management of Hyperkalaemia (outlook.com) |

Continuation of Long Term Conditions

| | |
|--------------------------|--|
| <p>Cancer / Oncology</p> | <ul style="list-style-type: none"> • Surviving Thyroid Cancer • Help Us Help You - Lung Cancer Symptoms • Breast Cancer Now • Macmillian • Bowel Cancer UK • Brain Trust • CRUK • Action Cancer • Foundation for Women's Cancer • NHS England » Cancer • Wednesday 10 May - 1pm-3pm: Oncology → (chronicconditions.co.uk) • Less than 3% of NHS England trusts hit key cancer waiting-time target (kingsfundmail.org.uk) • Fast track referral for suspected cancer due to non-site-specific symptoms (procedure) (createsend1.com) |
| <p>Liver Disease</p> | <ul style="list-style-type: none"> • British Liver Trust • Liver Research • BRITISH ASSOCIATION FOR THE STUDY OF THE LIVER • LIVERnORTH • LIVER DISEASE AND CIRRHOSIS • Hepatitis C in the UK 2023 (kingsfundmail.org.uk) • Liver disease profiles: March 2023 update, Office for Health Improvement and Disparities, 7 March 2023 (kingsfundmail.org.uk) |
| <p>Blood Disorders</p> | <ul style="list-style-type: none"> • Blood Cancer UK • UK Thalassaemia Society • The ITP Support Association • UK-ITP Paediatric ITP Registry • The Haemophilia Society • UK MDS Forum • Pernicious Anaemia Society • Haemochromatosis UK • NHS Blood and Transplant • Annual report from the sentinel surveillance of blood borne virus testing in England: data for January to December 2021 (kingsfundmail.org.uk) |

Continuation of Long Term Conditions




| | |
|----------------------------|---|
| G.I | <ul style="list-style-type: none"> • GIST Cancer UK • Pernicious Anaemia Society • Crohns and Colitis • FREE - NEW: Chronic Gastritis (outlook.com) MAY NEED TO REGISTER |
| ENT | |
| G.U | |
| ME / CFS / Fibromyalgia | <ul style="list-style-type: none"> • ME Association • ME Research • Action for M.E • Fibromyalgia Action UK • Fibromyalgia UK • Home - Fibromyalgia Awareness UK (fibroawarenessuk.org) • Fibromyalgia - Symptoms, diagnosis and treatment BMJ Best Practice • Fibromyalgia - The Brain Charity |
| Neurological Conditions | <ul style="list-style-type: none"> • The Brain Tumour Charity • Narcolepsy.Org • ACNR • MS Society UK Information, research and support Multiple Sclerosis Society UK • Home MS Trust • Parkinson's UK story (createsend1.com) • Multiple Sclerosis (nursinginpractice365.uk) MAY NEED SUBSCRIPTION |
| Musculoskeletal Conditions | <ul style="list-style-type: none"> • Rheumatology • National Axial Spondyloarthritis Society • Musculoskeletal health • Musculoskeletal health: 5 year prevention strategic framework • Faculty of Occupational Medicine • Guide to embedding your first contact physiotherapy service |

Continuation of Long Term Conditions

| | |
|--|--|
| Endocrine Disorders / Metabolic Disorders | <ul style="list-style-type: none"> • Society for Endocrinology • Turner Syndrome Support Society • Thyroid Eye Disease • British Thyroid Foundation • Thyroid UK • The Pituitary Foundation • Addisons Disease • Parathyroid UK • The Royal Osteoporosis Society • Metabolic Support UK |
| Frailty | <ul style="list-style-type: none"> • Recognising frailty • Identifying frailty • CLINICAL FRAILITY SCALE |
| Dementia / Alzheimers | <ul style="list-style-type: none"> • Dementia UK • Age UK - Understanding Dementia • Delirium Champions • Alzheimers Society • Poverty is linked to increased dementia risk, regardless of genetics (cogora.com) • Advance care planning and difficult conversations • Managing dementia as a palliative condition (nursinginpractice365.uk) MAY NEED TO LOG IN |
| Allergy / Auto-immune / Genetic Conditions | <ul style="list-style-type: none"> • Allergy UK • British Society for Rheumatology • Addisons Disease |
| Obesity | <ul style="list-style-type: none"> • Obesity UK • Home Page - NHS Digital Weight Management Programme Template Site (wmp.nhs.uk) • Thursday 25 May - 1pm-3pm: Obesity → (chronicconditions.co.uk) • Version 2 referral template for the NHS Digital Weight Management Programme • NICE recommends semaglutide for obesity (mims.co.uk) • Health inequalities position statement (kingsfundmail.org.uk) • Half of global population could be overweight by 2035, warns obesity charity (cogora.com) • World obesity atlas 2023 (kingsfundmail.org.uk) |

Continuation of Long Term Conditions

| | |
|----------------------|---|
| Dermatology | <ul style="list-style-type: none"> • British Association of Dermatologists • Eczema • The British Skin Foundation • Acne vulgaris: management • The Primary Care Dermatology Society • Acne.org • Allergy UK • Urticaria • Hives • Sunburn • Causes of cancer and reducing your risk • What is Rosacea? • Rosecea • The Rosacea Forum • Herpes Viruses Association • Shingles • Fungal Skin Infection - Foot • The Psoriasis Association • National Psoriasis Foundation • Melanoma • Skin Health Information • British Association of Plastic Reconstructive and Aesthetic Surgeons - Procedure Guides • Warts and verrucae • Dermatology • Home - Hyperhidrosis UK • Prevention, recognition and management of skin cancers (nursinginpractice365.uk) FREE MAY NEED SIGN IN |
| Pain Management | <ul style="list-style-type: none"> • Pain Concern • See Professor Tony Avery's visit to NHS Gloucestershire to see this in action through its Living Well with Pain Programme (createsend1.com) |
| Osteoporosis / Falls | <ul style="list-style-type: none"> • Preventing Falls in Older People - Inside Government • Demand for social care grows even as provision of services falls says think tank (cogora.com) |

| <i>Continuation of Long Term Conditions</i> | |
|---|---|
| Genomics / Genetics | <ul style="list-style-type: none"> • England Rare Diseases Action Plan to tackle health inequalities - GOV.UK (www.gov.uk) |
| Loneliness | <ul style="list-style-type: none"> • Loneliness (outlook.com) • NHS England » NHS health teams to refer lonely and isolated patients for check in and chat service |
| Multi-Morbidity / Complex Needs | <ul style="list-style-type: none"> • Multimorbidity • Multimorbidity / multiple long-term conditions (MLTC) |
| Minor Illness / First Contact Assessment / OSCE | <ul style="list-style-type: none"> • Fact Sheets - Self Care Forum • OSCE Checklists  (mlsend.com) • OSCE Flashcards  (mlsend.com) • 600+ OSCE Stations ✨ (mlsend.com) • Anatomy Flashcards  (mlsend.com) • Health A to Z • #EM3: East Midlands Emergency Medicine Educational Media • Nursing In Practice Reference – Apps on Google Play • Nursing In Practice Reference on the App Store (apple.com) • How to assess and manage common eye conditions (nursinginpractice365.uk) MAY NEED SUBSCRIPTION • NHS England » National primary care clinical pathway for constipation in children • Chest pain (cogora.com) • Double Vision (cogora.com) • Facial Rash - Nursing in Practice Reference (cogora.com) • Chest Symptoms - Nursing in Practice Reference • patient materials to support referrals from general practice for a minor illness consultation under the Community Pharmacist Consultation Service (CPCS) (createsend1.com) |
| Other / Case Studies | |
| Winter / Summer Pressures | <ul style="list-style-type: none"> • Tracking the impact of winter pressures in Great Britain: 18 to 29 January 2023 (outlook.com) • NHS Insights Prioritisation Programme: Tackling hospital winter pressures - WMAHSN |

| End of Life Care | |
|---|---|
| End of Life Care / Bereavement / Organ Donation | <ul style="list-style-type: none"> • ReSPECT for healthcare professionals • Hospice UK • Palliative and End of Life Care Profiles - OHID (phe.org.uk) |
| Flu / Covid-19 / Monkeypox | |
| Covid-19 | <ul style="list-style-type: none"> • Covid and the brain: what do we know? - Earn CPD points - Nursing In Practice 365 MAY NEED SUBSCRIPTION • Higher risk of Covid-19 infection drives ethnic health inequalities, global study finds (cogora.com) |
| Flu | |
| Long covid | <ul style="list-style-type: none"> • Your Covid Recovery • Long Term Effects of Covid • Post Covid Syndrome - Long Covid • COVID-19 Yorkshire Rehabilitation Screening Tool • FOM Guidance • Long Covid Toolkit |
| Monkey Pox | <ul style="list-style-type: none"> • UK Strategy for Mpox Control 2022-23 (outlook.com) |
| News & Views | |
| Digital News / Remote Consultations / AI | <ul style="list-style-type: none"> • Digital Health News Webinars • Digital Health News • NHS Digital • DigiHealthWell • Public Sector Events, Conferences and Training - Inside Government • Digital Transformation • Big Rewired Big Debate: Palantir vs Foxglove (mailchi.mp) • Your daily news updates from Digital Health (campaign-archive.com) • The latest news from The Digital Healthcare Show 2023 • Your daily news updates from Digital Health (campaign-archive.com) • Your daily news updates from Digital Health (campaign-archive.com) • Digital Health News - 9 March 2023 (mailchi.mp) • Digital Health Digest - 10 March 2023 (mailchi.mp) |

| | |
|---|--|
| PSNC News / Pharmacy | <ul style="list-style-type: none"> • National Pharmacy Association • Royal Pharmaceutical Society • Medicines Learning Portal • Specialist Pharmacy Service • PSNC Newsletter: 6th March (mailchi.mp) • PSNC Newsletter: 8th March (mailchi.mp) |
| Pulse / GP Online / HSJ / NB Medical / 60 Second GP | <ul style="list-style-type: none"> • GP Online • HSJ • Pulse Today |
| Primary Care Update / PCC / PPP | <ul style="list-style-type: none"> • Public Policy Projects News • NHS England Primary Care Bulletin (outlook.com) |
| Proactive Care | |
| Kings Fund | <ul style="list-style-type: none"> • The Kings Fund • Library services The King's Fund (kingsfund.org.uk) • Health and Wellbeing Bulletin (kingsfundmail.org.uk) • Leadership and workforce summit Two weeks today (kingsfundmail.org.uk) • Health Management and Policy Alert: 7 March 2023 (kingsfundmail.org.uk) • Save the date: Putting a spotlight on women's health (kingsfundmail.org.uk) • Tickets available: Accelerating progress on cardiovascular disease (kingsfundmail.org.uk) • Health Management and Policy Alert: 10 March 2023 (kingsfundmail.org.uk) • How can we support digital inclusion? (kingsfundmail.org.uk) • Invitation to Join Us at the NNG Conference (mahealthcareevents.co.uk) |
| Health Care Leaders Newsletters | |
| World Health Organisation | <ul style="list-style-type: none"> • WHO • OpenWHO |

| | |
|--|--|
| <p>IHCT / CCG / STP / Healthier Futures</p> | <ul style="list-style-type: none"> • Black Country & West Birmingham CCG • Dudley Integrated Health and Care • Home :: Black Country Healthcare NHS Foundation Trust • SharePoint • Message from Mark Axcell & Staff News (02 March 2023) (sharepoint.com) • Message from Sally Roberts & Staff News (23 February 2023) (sharepoint.com) • Message from Mark Axcell & Staff News (16 February 23) (sharepoint.com) • Message from Mark Axcell & Staff News (09 February 2023) (sharepoint.com) • Message from Mark Axcell & Staff News (02 February 2023) (sharepoint.com) • Issue 34 - Black Country Primary Care Brief (sharepoint.com) • Issue 33 - Black Country Primary Care Brief (sharepoint.com) • Issue 31 - Black Country Primary Care Brief (sharepoint.com) • Issue 31 - Black Country Primary Care Brief (sharepoint.com) • Issue 30 - Black Country Primary Care Brief (sharepoint.com) • Issue 29 - Black Country Primary Care Brief (sharepoint.com) • Issue 28 - Black Country Primary Care Brief (sharepoint.com) • Issue 27 - Black Country Primary Care Brief (sharepoint.com) • Issue 26: Black Country Primary Care Brief (sharepoint.com) |
| <p>NHSI / NHSE</p> | <ul style="list-style-type: none"> • NHS England • NHS England » NHS Digital merges with NHS England |
| <p>University / Student Nurses</p> | |
| <p>Medisa / Univadis / Geeky Medics / GP Notebook / Medscape</p> | <ul style="list-style-type: none"> • Medisa • Geeky Medics • Medscape Nurses • GP Notebook • Geeky Medics - YouTube • GPnotebook quick update (contains GSK brand info: Edward's COPD story) (campaign-archive.com) • GPnotebook focus on respiratory medicine (contains promotional information) (mailchi.mp) |
| <p>Nurse Guidelines</p> | |
| <p>The Health Foundation</p> | <ul style="list-style-type: none"> • The Health Foundation |

Continuation of News & Views

| | |
|--|--|
| The Health Care Leaders Update | <ul style="list-style-type: none"> • Health Care Leader News |
| Practice Index | |
| Innovation Agency | <ul style="list-style-type: none"> • Innovation Agency Exchange • Newsletter March 2023 (campaign-archive.com) |
| RCN | <ul style="list-style-type: none"> • RCN • RCN Magazines: Women's history New videos Anti-strike bill |
| Cavell Trust | |
| Nursing in Practice / Nursing Standard / Independent Nurse | <ul style="list-style-type: none"> • Nursing Times • Nursing in Practice Bulletin • Nursing in Practice Clinical Bulletin • Independent Nurse Newsletter • JCN Bulletin • GPN Bulletin |
| QNI | <ul style="list-style-type: none"> • QNI • Talk To Us @ – The Queen's Nursing Institute (qni.org.uk) • Draft QNI Field Specific SPQ Standards |
| NMC | <ul style="list-style-type: none"> • NMC |
| CMO / CNO | <ul style="list-style-type: none"> • Chief medical officer Institute for Government • NHS England » Chief Nursing Officer for England • CNO Bulletin |
| HRA | <ul style="list-style-type: none"> • Health Research Authority |
| Nice | <ul style="list-style-type: none"> • NICE • NICE recommended weight-loss drug to be made available in specialist NHS services News News NICE |
| RCGP / BMA / The Lancet | <ul style="list-style-type: none"> • The Lancet • British Medical Journal • Royal College of General Practitioners • British Journal of General Practice |

| <i>Continuation of News & Views</i> | |
|--|---|
| Nuffield Health | <ul style="list-style-type: none"> • Home The Nuffield Trust |
| Midlands Academic Health Science Network | <ul style="list-style-type: none"> • WMAHSN Network • Lipid management pathways - The AHSN Network • WMAHSN March 2023 update (mailchi.mp) • Events Archive - WMAHSN |
| Healthwatch | <ul style="list-style-type: none"> • Healthwatch • Our Annual Report 2021-22 Healthwatch |
| CPD News | <ul style="list-style-type: none"> • CPD News |
| Inside Government | <ul style="list-style-type: none"> • Inside Government - Public and Voluntary Sector Events and Resources • Online Training Day: Learning from Deaths in Healthcare (insidegovernment.co.uk) • Online Training Course: Supporting Women's Health and Wellbeing in the Workplace 08 Jun, 20239:00 am-4:30 pm Online (insidegovernment.co.uk) • National SEND Conference 2023 21 Jun, 20238:45 am-4:30 am Central London (insidegovernment.co.uk) • The NHS Food Standards Conference 2023 03 May, 20239:00 am-4:15 pm Online Conference (insidegovernment.co.uk) • 8th Annual Tackling Loneliness Conference 17 May, 20238:45 am-4:15 pm Online (insidegovernment.co.uk) • NHS Fraud 2023 16 May, 20239:00 am-5:00 pm etc.venues St Paul's (insidegovernment.co.uk) |
| NHS Resolution | |
| Other | <ul style="list-style-type: none"> • Patients Association • Request Support Services Volunteer Responders (nhsvolunteerresponders.org.uk) |

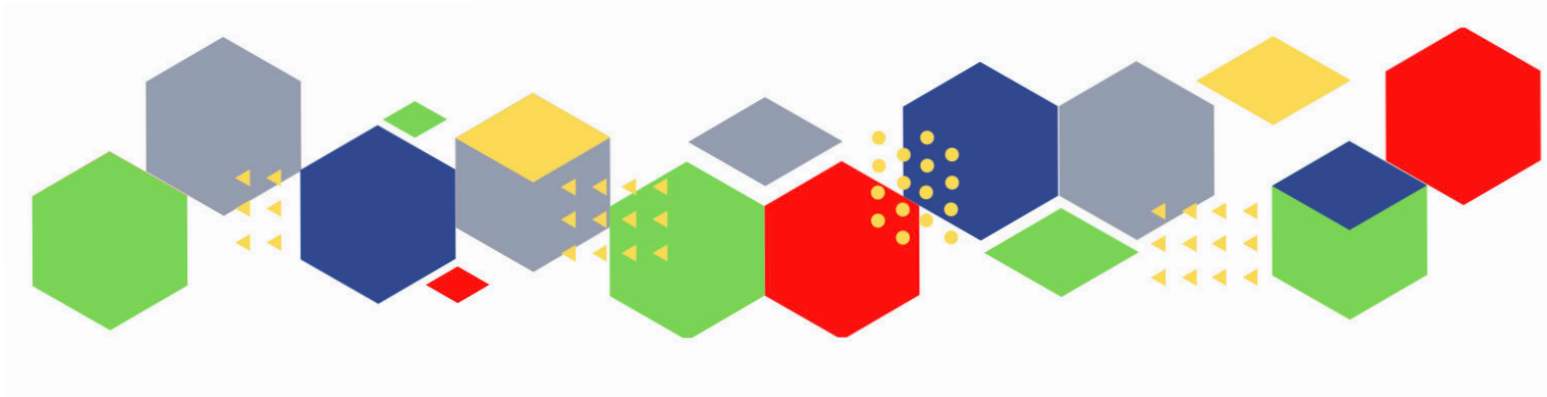
Free Training / Webinars / Meetings / CPD

Development / Information and Knowledge

- [Red Whale Training](#)
- [Issues & Answers](#)
- [Best Practice in delivery and management of immunisation services \(mahealthcareevents.co.uk\)](#)
- [You are invited to the JWC Consensus Document Webinar \(mahealthcareevents.co.uk\)](#)
- [22 March 2023 from 12:30 to 14:00 - Mentoring – the how, the what and the why](#)
- [Watch the webinar and download Frequently Asked Questions \(createsend1.com\)](#)
- [General Practice Appointment Data \(GPAD\)](#)
- [Webinar recording](#)
- [Remote Consultations \(createsend1.com\)](#)
- [Document Workflow \(createsend1.com\)](#)
- [Supporting Carers in General Practice \(createsend1.com\)](#)
- [Redesigning Appointment Systems \(createsend1.com\)](#)
- [Primary Care Improvers Conference - 7 June 2023 – register your place](#)
- [UK Care Week - Wednesday 22nd March 2023 Thursday 23rd March 2023 NEC, Birmingham](#)
- [PCN Study Day 2023 - Respiratory \(mahealthcareevents.co.uk\)](#)
- [Innovative solutions for your practice \(bestpracticeshow.co.uk\)](#)
- [Career Pathway, Core Cancer Capabilities in Practice \(CiP\) and Education Framework for the Nursing and Allied Health Professions Workforce \(outlook.com\)](#)
- [visit the HEE ACCEND webpage \(outlook.com\)/ watching a short, online presentation \(outlook.com\)](#)
- [NAFLD or MAFLD: should you care? \(mahealthcareevents.co.uk\) CPD CERTIFIED CONFERENCE, 15TH MARCH 2023, LONDON](#)
- [Thursday 30 March from 1pm to 2pm: A key to delivering Population Health Management](#)
- [PART 1 – ECHO Interpretation and reports made easy – Tuesday 11th April at 7pm. Registration – CMB TV On Demand \(cardiometabology.com\)](#)
- [PART 2 – The Breathless patient DEMYSTIFIED – Wednesday 19th April at 8pm. Registration – CMB TV On Demand \(cardiometabology.com\)](#)
- [The PIP Talks - Diphtheria and Pertussis](#)
- [Learning from Deaths in Healthcare \(outlook.com\) 22nd March](#)
- [Nursing in Practice Virtual - Respiratory - Nursing In Practice 365](#)
- [22 March, 1.30pm – 3pm. Care Coordinator - share and learn webinar](#)
- [23 March, 10am – 3.30pm, Birmingham. The Care Programme: Demonstrating how neighbourhood teams and integrated care deliver better outcomes for people](#)
- [23 March, 12.30pm – 1.45pm. Sepsis in primary care](#)
- [28 March, 10.30am - 4pm. Celebrating Six Years of Nursing Associates \(NA\) and the difference they make in delivering patient care](#)

| | |
|--|---|
| <p><i>Development / Workshops / Webinars / Information and Knowledge Continued</i></p> | <ul style="list-style-type: none"> • Respiratory (nursinginpractice365.uk) 4 April MAY NEED SUBSCRIPTION • Public Health & Immunisations (nursinginpractice365.uk) 13 June MAY NEED SUBSCRIPTION • Learn about the Clinical Characteristics of Convexity in Our Webinar on March 30th! (mahealthcareevents.co.uk) • 22 March, 1.30pm – 3pm. Care Coordinator - share and learn webinar • 23 March, 10am – 3.30pm, Birmingham. The Care Programme: Demonstrating how neighbourhood teams and integrated care deliver better outcomes for people • 23 March, 12.30pm – 1.45pm. Sepsis in primary care • 27 March, 12pm – 1pm. Flexible working: Leading the change at board level • 28 March, 10.30am - 4pm. Celebrating six years of nursing associates (NA) and the difference they make in delivering patient care • 28 March, 10am – 11am. New statutory guidance on working with people and communities • 29 March, 1pm – 2.30pm. Health and wellbeing coach - share and learn webinar • 30 March, 10am – 4pm. #StartWithPeople Spring event |
| <p>Free to RCN</p> | <ul style="list-style-type: none"> • RCNi events RCNi • Pain and Palliative Care Forum Forum Engagement and Education Session Webinar Royal College of Nursing (rcn.org.uk) |
| <p>MIMMs Learning</p> | |
| <p>Eventbrite</p> | <ul style="list-style-type: none"> • Part 3 - Case studies in hyperkalaemia Registration, Mon 27 Mar 2023 at 20:00 Eventbrite |
| <p>e-Learning for Health</p> | |
| <p>Skills for Health</p> | |
| <p>YouTube</p> | <ul style="list-style-type: none"> • NHS England • Black Country Healthcare - YouTube |
| <p>Future Proof Health Training</p> | <ul style="list-style-type: none"> • Training |
| <p>Evidence based care</p> | |
| <p>BCWB Training Hub</p> | <ul style="list-style-type: none"> • Black Country Communications Toolkit - 17 Feb 2023 (mailchi.mp) |

| | |
|----------------|---|
| Podcasts | <ul style="list-style-type: none"> • The Nursing Handover Podcast • Nursing Standard Podcasts • Nursing Matters • Welcome to the BJN Podcast • Cynet Health Care Podcast • EBN podcast • This Is Nursing • Teach me, I'm a Nurse • Past Caring • RCGP eLearning podcast • The BMJ Podcast • Primary Care Network podcasts • The Professional Support Unit's Pandemic Podcast • The Next GenCast • Stream on Spotify here (outlook.com) |
| Apps | |
| Area Bulletins | |
| Research | <ul style="list-style-type: none"> • Science Daily • Multimorbidity / multiple long-term conditions (MLTC) • National Institute for Health and Care Research • NHS Knowledge and Library Hub - Knowledge and Library Services • Download the quick reference guide (createsend1.com) |
| Blogs/Vlogs | <ul style="list-style-type: none"> • Blog NB Medical |
| Freebies | <ul style="list-style-type: none"> • Blue Light Card |
| Campagne Links | <ul style="list-style-type: none"> • 2023 D&I Calendar (hubspotusercontent-eu1.net) |
| Other | |



Thank you for reading Future Proof Health's weekly news!

If you missed past issues, please click [here](#) to view them

More information can be found on our website, [here](#)

Don't forget to like us on [Facebook](#) & Follow us on [Twitter](#)

