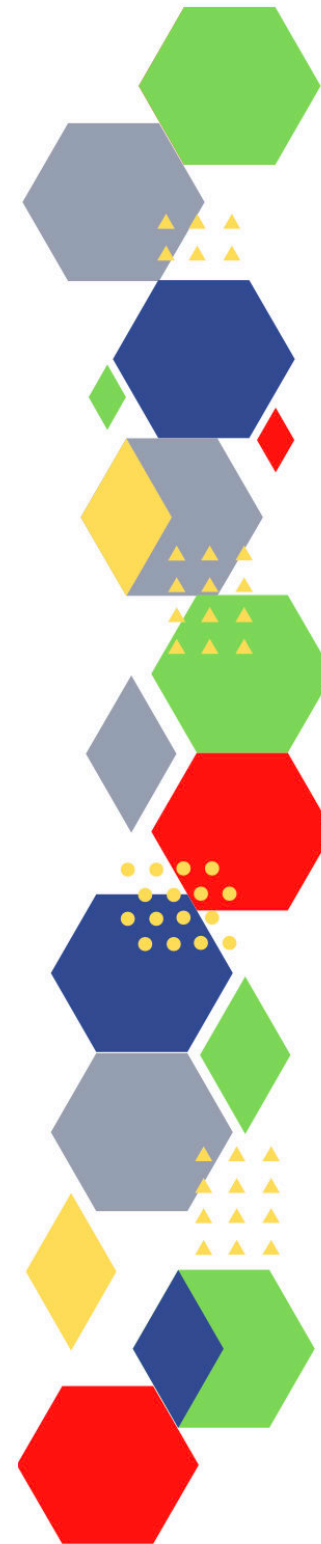


Future Proof Health Presents

Weekly News

30th September 2021



Communication	
Communication with Patients	
Communication within Teams	
People and Personal Development	
Personal / HR & People Development / Leadership	<ul style="list-style-type: none"> • Job Vacancies • Accountability and delegation in practice • Personalised care supporting plans - March 2021
Consent	<ul style="list-style-type: none"> • Gillick competency and Fraser guidelines • CONSENT POLICY
Health, Safety & Security	
<ul style="list-style-type: none"> • NPSA • HSE Weekly Bulletin 	
CQC	<ul style="list-style-type: none"> • GP mythbusters • DHSC Adult Social Care update • The recovery challenges for NHS hospital services
Vaccines / Medications / Prescribing	<ul style="list-style-type: none"> • Protocol for ordering, storing and handling vaccines • A Competency Framework for all Prescribers • Non-medical prescribing • The Human Medicines Regulations 2012 • RCN - Non-medical prescribers • Royal Pharmaceutical Society • Standards for prescribing • Clinical Negligence Scheme for General Practice • Specialist Pharmacy Service - Guidance • Government pledges to reduce overprescribing of medicines

Drug / Device Alerts (MHRA)	<ul style="list-style-type: none"> • Consultation on future medical devices regulations in the UK - Public
Antibiotic steward-ship / Anti-microbial resistance	
Emergency Situations	<ul style="list-style-type: none"> • The updated National Early Warning Score and its use with suspected Sepsis • Resuscitation Council UK
Infection Control / Infection Statics	
Safe Guarding	<ul style="list-style-type: none"> • Female genital mutilation (FGM) • PREVENT • Child protection system in the UK • Safeguarding Adults • Safeguarding children: detailed information
Practice Policies	
Audit	
Information Governance	<ul style="list-style-type: none"> • Guide to Data Protection • Supporting general practice – Medical record keeping
Quality & Service Improvement	
Quality, Service & Improvement	<ul style="list-style-type: none"> • The PRSB • General Practice Assessment Questionnaire (GPAQ) • Healthwatch • NHS Five Year Forward View • General Practice Forward View • NMC • Dr Jon Griffiths • NHS Confederation • UEC Recovery 10 Point Action Plan – Implementation guide • How primary care is delivering for patients

New Roles in General Practice	<ul style="list-style-type: none"> • Standards for nursing associates
Revalidation	
Personal Practice & Development	
NHS Self Care & Resilience	<ul style="list-style-type: none"> • Samaritans • Mental Health at work • Calm • Welfare facilities for healthcare staff
ICS / PCN	
Leadership	

Personalised Care

Personalised Care / Self Care / Social Prescribing / Health Coaching	<ul style="list-style-type: none"> • Self care forum • Personalised Care Institute • Personalised care • Dedicated to the advancement of social prescribing through promotion, collaboration and innovation • Recap Health • Accelerating innovation in social prescribing
Group consultation	
Working Differently	

Equality & Diversity	
Equality & Diversity	<ul style="list-style-type: none"> • Public Health Profiles
Inclusion Health	
Poverty / Homelessness	<ul style="list-style-type: none"> • Crisis • Working together for better lives: case studies
Migrant Health	<ul style="list-style-type: none"> • Afghan relocation and resettlement schemes Advice for primary care
Thrive Into Work	<ul style="list-style-type: none"> • Thrive into Work • Thrive into Work Referral form
Health Inequalities	
Health & Well-Being	
Health & Well-Being	
Assessment	
Obtaining samples	
QOF/PHOF/DES/LES	<ul style="list-style-type: none"> • Enhanced service specification: Weight management 2021/22
Management of Emergency Situations	
Management of Emergency Situations	<ul style="list-style-type: none"> • The updated National Early Warning Score and its use with suspected Sepsis
Red Flags	<ul style="list-style-type: none"> • Supporting general practice – Common pitfalls
Sepsis	<ul style="list-style-type: none"> • Sepsis: recognition, diagnosis and early management • Sepsis guidance implementation advice for adults • Sepsis in Children • Sepsis Trust • RCGP: Sepsis • World Sepsis Day 2021- HEE launches new Sepsis Awareness Resource video
Therapeutic Monitoring	

Role Specific	
Cervical Cytology	<ul style="list-style-type: none"> • Guide to the interim assessment • Cervical screening for trans men and/or non-binary people
Ear Care	
Wound Management	<ul style="list-style-type: none"> • WOUNDEXPO2021 • Microworld • Wound Care Today 2021
Minor Surgery	<ul style="list-style-type: none"> • Supporting general practice – Consent
Health Promotion / Health Screening	
Health Promotion / Population Health	<ul style="list-style-type: none"> • Better Health • EXi App
Health Screening	<ul style="list-style-type: none"> • First results from five multidisciplinary diagnostic centre (MDC) projects for non-specific but concerning symptoms, possibly indicative of cancer
PHE	<ul style="list-style-type: none"> • Knowledge & Library Services • Campaign Resources • Public Health Profiles • Health Publications • Invasive group A streptococcal outbreaks associated with community health services delivered at home, January 2018 to September 2019
NHS Health Check	<ul style="list-style-type: none"> • NHS Health Check
NOIDS / PHE Surveillance / Syndromic Surveillance	<ul style="list-style-type: none"> • Notifications of infectious diseases (NOIDs) • Syndromic surveillance: systems and analyses
Addiction/Smoking	<ul style="list-style-type: none"> • Drink Coach • Smokers encouraged to take part in Stoptober, as they report smoking more during pandemic

Immunisation / Travel Health

- [Vaccinations and infections](#)
- [Joint Committee on Vaccination and Immunisation](#)
- [Immunisation against infectious disease](#)
- [West Midlands Immunisation Service](#)
- [Immunisation information for Health Care Services within the West Midlands area](#)
- [Vaccination of individuals with uncertain or incomplete immunisation status](#)
- [WHO vaccine-preventable diseases: monitoring system. 2020 global summary](#)

Flu	<ul style="list-style-type: none"> • Flu and flu vaccinations • The national influenza immunisation programme 2021 to 2022 • Flu vaccines for the 2021 to 2022 season poster • Appendix C: Flu vaccinator competency assessment tool • Healthcare assistants and flu vaccinations
Children	<ul style="list-style-type: none"> • Annex A: JCVI advice on vaccination of children aged 12 to 15 years with underlying health conditions (31 August 2021) • Rotavirus immunisation programme: changes from September 2021 letter
Adults	<ul style="list-style-type: none"> • Immunisation patient group direction (PGD) templates • Shingles immunisation programme: introduction of Shingrix® letter
Vaccine Update	<ul style="list-style-type: none"> • Vaccine update • PHE gateway number: 2020085 Vaccine Update Index
Travel Health	<ul style="list-style-type: none"> • Travel Health Pro • Fit for Travel • Travel Health • Jane Chiodini • Corona.Help • Healthcare for UK nationals visiting the EU • Red, amber, green lists: check the rules for travel to England from abroad
Covid Vaccine	<ul style="list-style-type: none"> • Over one million invited for COVID booster jabs this week

Mental Health / Learning Disability / Disability

Mental Health	<ul style="list-style-type: none"> • Mental Health • Mental Health UK • Mind • Place2b • Rethink Mental Illness • Young Minds • Every Mind Matters • Calm • Headspace • We Can Talk • NHS mental health crisis helplines receive three million calls • Long-term antipsychotic use linked to breast cancer • Where to get urgent help for mental health
Learning Disability	<ul style="list-style-type: none"> • Learning Disabilities • Learning Disability England • Mencap • Bild • Autism • Meeting the healthcare needs of adults with a learning disability and autistic adults in prison
Disability	<ul style="list-style-type: none"> • Disability Rights UK • Disability Matters

From Cradle to...

<p>Infant Health</p>	<ul style="list-style-type: none"> • Tommys • First Steps Nutrition Trust • Bliss • NHS App - Baby Buddy • NHS App - Peanut
<p>Child Health</p>	<ul style="list-style-type: none"> • Unicef • Health Professional Academy • Premature Babies • Child and Maternal Health • Women and Child First • Child Health Information Services • Place2b • Childhood eczema • Children's public health 0 to 5 years: national reporting • Covid-19: Risks of severe illness in children shown to be very low
<p>Adolescent Health</p>	<ul style="list-style-type: none"> • Adolescent Health Programme • Society for Adolescent Health and Medicine • Young Minds
<p>Trans / Non-binary Health / LGBTQ+</p>	<ul style="list-style-type: none"> • LGBT Foundation • NHS population screening: information for trans and non-binary people • Cervical screening for trans men and/or non-binary people • NEW ONLINE TRAINING TOOLKIT FOR CERVICAL SCREENING TAKERS LAUNCHED
<p>Mens Health</p>	<ul style="list-style-type: none"> • Mens Health Forum • Mens Health Month • Mens health.org • Mens Health UK • Men and mental health • Men's Mental Health Awareness • Prostate Cancer UK • Orchid Fighting Male Cancer

Women's Health	<ul style="list-style-type: none"> • Womens Health Concern • Well Being of Women • Coppa Feel • Menopause Matters • The Menopause Charity • Royal College of Obstetricians and Gynaecologists - Guidelines • Pelvic Partnership • CRUK - Womens Cancer • Breast Cancer Now • Foundation for Women's Cancer • Eve Appeal • Ovarian.Org • Jo's Trust • Well Spring
Veterans Health	<ul style="list-style-type: none"> • The first call for help takes courage
The Older Population	<ul style="list-style-type: none"> • BGS
Carers	<ul style="list-style-type: none"> • The Care Provider Alliance • Skills for Care • The Care Workers' Charity • Adult Social Care Update • Celebrating Homecare
Complex Needs	
Family Planning & Sexual Health	
Family Planning	<ul style="list-style-type: none"> • Faculty of Sexual and Reproductive Healthcare Education and Training
Reproductive	<ul style="list-style-type: none"> • Tommys
Sexual Health	<ul style="list-style-type: none"> • Sexual and Reproductive Health Profiles • FSRH Education & Training • Annual statistics on sexual and reproductive health services published • Sexually Transmitted Infections in England, 2020
Maternity / Neonate health	

Care of Patients with Long Term Conditions

LTC	<ul style="list-style-type: none"> • Chronic Conditions On Demand
Diabetes & Pre-Diabetes	<ul style="list-style-type: none"> • AZ Medical and Educational Goods and Services in Diabetes • Mumoactive • The mySugr App • Foot Check • Deep Dive on DPP-4 Inhibitors • Type 2 diabetes mellitus (T2DM) and heart failure
Respiratory	<ul style="list-style-type: none"> • Spirometry: step by step • ARTP • British Lung Foundation • The Primary Care Respiratory Society • British Thoracic Society condemns Marlboro maker's takeover of UK inhaler company
COPD	<ul style="list-style-type: none"> • Right Breathe • Diagnosis and management: COPD
Asthma	<ul style="list-style-type: none"> • FeNO - Fractional exhaled nitric oxide - for the diagnosis and management of Asthma • Asthma UK • Asthma: diagnosis, monitoring and chronic asthma management • GINA 2021: the missing pieces in the childhood asthma puzzle • GINA: Interim Guidance About COVID-19 & Asthma • National bundle of care for children and young people with asthma
Hypertension	<ul style="list-style-type: none"> • British Heart Foundation • Blood Pressure UK • Hypertension in adults: diagnosis and management • Hypertension in adults: diagnosis and treatment • Self-Monitoring of Blood Pressure in Hypertension: A UK Primary Care Survey
CVD/AF	<ul style="list-style-type: none"> • QRISK®3-2018 risk calculator • Charity warns heart surgery waiting times could rise more than 40% by next spring without new funding • Heart Rhythm Alliance • CVD risk assessment and management • Health matters: preventing cardiovascular disease • NICE impact cardiovascular disease prevention

Continuation of Long Term Conditions

Heart Failure	<ul style="list-style-type: none"> • British Heart Foundation • British Society Guidelines
Cancer / Oncology	<ul style="list-style-type: none"> • Surviving Thyroid Cancer • Help Us Help You - Lung Cancer Symptoms • Becca Breast Cancer Support App • Breast Cancer Now • MoleCare App • First results from five multidisciplinary diagnostic centre (MDC) projects for non-specific but concerning symptoms, possibly indicative of cancer
Chronic Kidney Disease	<ul style="list-style-type: none"> • Kidney.Org • Kidney Quality Improvement Partnership
Liver Disease	<ul style="list-style-type: none"> • British Liver Trust • Liver Research • BRITISH ASSOCIATION FOR THE STUDY OF THE LIVER • LIVERnORTH • LIVER DISEASE AND CIRRHOSIS
Blood Disorders	<ul style="list-style-type: none"> • Blood Cancer • Thalassaemia • ITP • Haemophilia • UK MDS Forum • Save a life. Give plasma. • Diagnosis and management of pernicious anaemia • The K+alibre portal
G.I	<ul style="list-style-type: none"> • GIST Cancer UK • HbA1c, glycaemic variability and diabetic retinopathy risk • Bowel Interest Group
ENT	
G.U	

Continuation of Long Term Conditions

Neurological Conditions	<ul style="list-style-type: none"> • The Brain Tumour Charity • Vasovagal syncope
Musculoskeletal Conditions	<ul style="list-style-type: none"> • Rheumatology • National Axial Spondyloarthritis Society • Musculoskeletal health
Endocrine Disorders / Metabolic Disorders	<ul style="list-style-type: none"> • Endocrinology • Turner Syndrome Support Society • Thyroid Eye Disease • British Thyroid Foundation • Thyroid UK • Pituitary • Addisons Disease • Parathyroid UK • The Royal Osteoporosis Society • Metabolic Support UK
Frailty	<ul style="list-style-type: none"> • Recognising frailty • Identifying frailty • CLINICAL FRAILTY SCALE
Dementia	<ul style="list-style-type: none"> • Dementia UK • Understanding dementia • My House of Memories - NHS App • Dementia profile updates

Continuation of Long Term Conditions

Dermatology	<ul style="list-style-type: none"> • British Association of Dermatologists • Eczema • The British Skin Foundation • Acne vulgaris: management • The Primary Care Dermatology Society • Acne.org • Allergy UK • Urticaria • Hives • Sunburn • Causes of cancer and reducing your risk • What is Rosacea? • Rosecea • Herpes.org • Shingles • Fungal Skin Infection - Foot • The Psoriasis Association • Psoriasis • Melanoma • Skin Health Information • British Association of Plastic Reconstructive and Aesthetic Surgeons • Warts and verrucae • Prescribers warned over topical steroid withdrawal reactions
Allergy / Auto-immune / Genetic Conditions	<ul style="list-style-type: none"> • Allergy UK • Rheumatology • Addisons Disease
Obesity	<ul style="list-style-type: none"> • Obesity UK • Enhanced service specification: Weight management 2021/22
Pain Management	<ul style="list-style-type: none"> • Pain Concern • UK career framework for pain nurses

<i>Continuation of Long Term Conditions</i>	
Genomics	<ul style="list-style-type: none"> • Health Secretary has genome sequenced for project tackling health disparities • AAV GENE THERAPY IN THE CLINICAL SETTING: A PRACTICAL APPROACH
Multi-Morbidity	<ul style="list-style-type: none"> • Multimorbidity • Multimorbidity / multiple long-term conditions (MLTC)
Minor Illness / First Contact Assessment	
Other	<ul style="list-style-type: none"> • Ultra Rare Disease Disorders And Disabilities Foundation • Atlas of Variation • MyCognition Home - NHS App • College of Optometrists encourages the public to consider visiting their optometrist, if needed, during National Eye Health Week
End of Life Care	
End of Life Care	
Covid-19	
Covid-19	<ul style="list-style-type: none"> • Covid Live • Coronavirus Statistics • COVID-19 Response: Autumn and Winter Plan 2021 • First UK manufactured rapid tests deployed across England • Covid-19: Risks of severe illness in children shown to be very low • Directors of public health and the Covid-19 pandemic: 'A year like no other'
Long Covid	<ul style="list-style-type: none"> • Supporting your recovery after COVID-19 • Long Covid Toolkit
Covid Response / Recovery	<ul style="list-style-type: none"> • Build Back Better: Our Plan for Health and Social Care

News & Views

Digital News / Remote Consultations	<ul style="list-style-type: none"> • Digital Health News Webinars • Digital Health News • The Digital Health Autumn Leadership Summit / 7-8 October 2021
PSNC News	<ul style="list-style-type: none"> • 24th September • 28th September • 29th September • September 2021 Price Concessions
60 Second GP / Pulse / GP Online / HSJ	<ul style="list-style-type: none"> • 60 Second GP • GP Online • HSJ • Pulse Today
Primary Care Update / PCC	<ul style="list-style-type: none"> • Primary Care Bulletin
Kings Fund	Weekly News / Health Management and Policy Alert / Health and Well Being Bulletin / Digital Health Digest / Events Update
World Health Organisation	<ul style="list-style-type: none"> • WHO
Midlands Academic Health Science Network	
Healthwatch	<ul style="list-style-type: none"> • Healthwatch
Black Country Bulletins	

Continuation News & Views

IHCT / CCG / STP / Healthier Futures	<ul style="list-style-type: none"> • Healthier Futures • Black Country & West Birmingham CCG • Dudley Integrated Health and Care • Integrated Care Systems September Update from the System Transition Group
University / Student Nurses	
Medisa / Univadis / Geeky Medics / GP Notebook / Medscape	<ul style="list-style-type: none"> • Univadis Newsletter • Univadis Nurses Headlines • Medisa • Geeky Medics • Medscape Nurses • RCGP Chair Warns That GP Shortage Will Limit Face-to-face Consultations • Clinical Guidelines. Real-World Perspectives. • FAST FIVE QUIZZES • Campaigners Lose High Court Challenge Over Down's Syndrome Abortion Law
MIMS	<ul style="list-style-type: none"> • Latest MIMS news
The Health Foundation	<ul style="list-style-type: none"> • The Health Foundation • Lifelong learning and levelling up: building blocks for good health • Webinar: The future role of public health
The Health Care Leaders Update	<ul style="list-style-type: none"> • Health Care Leader News
PHE	
Innovation Agency	<ul style="list-style-type: none"> • Innovation Agency Exchange
RCN	<ul style="list-style-type: none"> • RCN • RCNiPlus Newsletter • RCN Foundation • Annual Stephen Hawking Foundation MND Lecture • SoliMix – Advancing therapy in suboptimally controlled basal insulin-treated type 2 diabetes

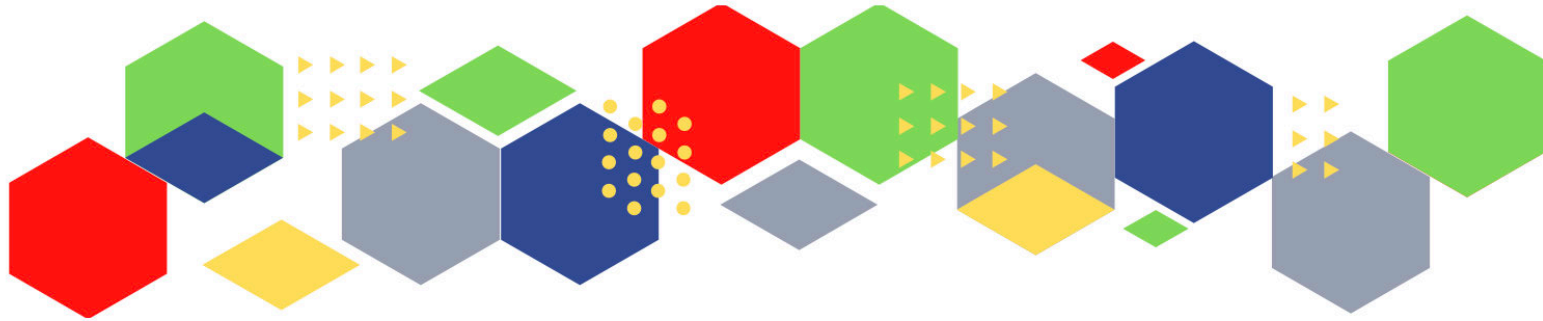
Continuation News & Views

Nursing in Practice / Nursing Standard / Independent Nurse	<ul style="list-style-type: none"> • Nursing in Practice Bulletin • Nursing in Practice Clinical • GPN Bulletin • Independent Nurse Magazine
QNI	<ul style="list-style-type: none"> • QNI
NMC	<ul style="list-style-type: none"> • NMC
CMO / CNO	<ul style="list-style-type: none"> • Social care reform and what it means for our workforce
Nice	<ul style="list-style-type: none"> • NICE
RCGP / BMA / The Lancet	<ul style="list-style-type: none"> • The Lancet • British Medical Journal • Royal College of General Practitioners • QOF QI hub • BMA Update
Midlands Academic Health Science Network	<ul style="list-style-type: none"> • WMAHSN Network

Free Training / Webinars / Meetings / CPD

<p>Development / Information and Knowledge</p>	<ul style="list-style-type: none"> • RCN Events - West Midlands • 16th November - MIMS Learning Live • THE BEST PRACTICE SHOW – 13-14 October 2021 • Inaugural Broadcasts 2021 • 20th October - System Leader: Integrating additional roles in primary care • 24th March 2022 - RCN Clinical Research Nursing Conference 2022 • Menopause Training • 12th October - Clinicians and Practitioners: Emerging video group clinics in cancer care • RCGP Learning • Deep Dive on DPP-4 Inhibitors • ISSUES & ANSWERS CONFERENCE SERIES 2021 • 8th October IRIS Workshop 1: DA and Mental Health • 15th October IRIS Workshop 2: DA and Complex Needs • 22nd October IRIS Workshop 3: DA and Elderly People
<p>Podcasts</p>	<ul style="list-style-type: none"> • The Nursing Handover Podcast • Nursing Standard Podcasts • What Makes a Nurse? • The MedicsPro Podcast • Nursing Matters • Welcome to the BJN Podcast • Why we care • EBN podcast • This Is Nursing • Maroon Mindset • Teach me, I'm a Nurse • Past Caring • RCGP eLearning podcast • The BMJ Podcast • Primary Care Network podcasts • The Professional Support Unit's Pandemic Podcast

<i>Continuation of Free Training / Webinars / Meetings / CPD</i>	
Blogs/Vlogs	<ul style="list-style-type: none">• Personalised care supporting plans - March 2021
Area Bulletins	<ul style="list-style-type: none">• Dudley
BCWB Training Hub	<ul style="list-style-type: none">• Black Country and West Birmingham Training Hub
Research	<ul style="list-style-type: none">• Science Daily• Multimorbidity / multiple long-term conditions (MLTC)• UK Research and Innovation
Freebies	<ul style="list-style-type: none">• Blue Light Card
Other	



Thank you for reading Future Proof Health's weekly news!
If you missed past issues, please click [here](#) to view them

More information can be found on our website, [here](#)

Don't forget to like us on [Facebook](#) & Follow us on [Twitter](#)

