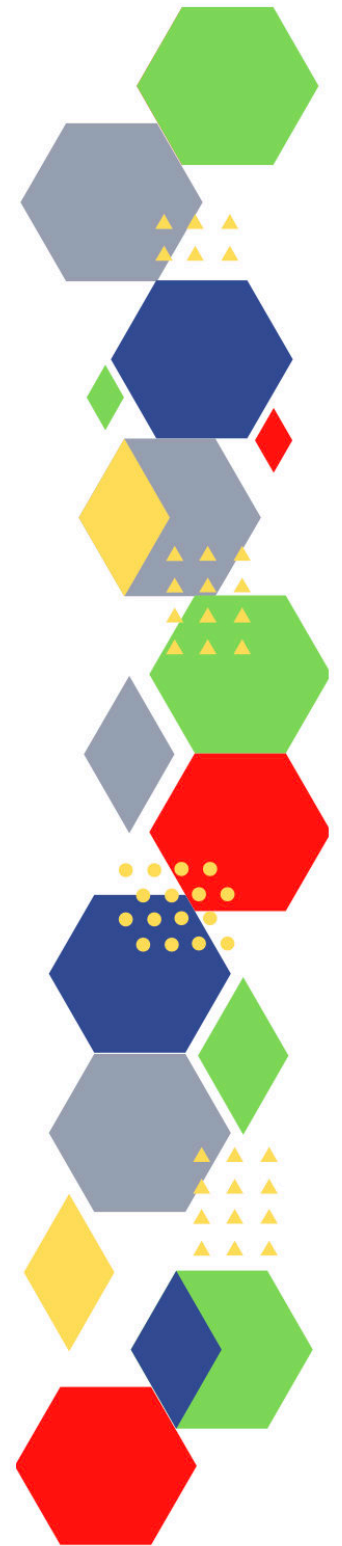




Future Proof Health Presents

Weekly News

1st June 2022



Communication	
Communication with Patients	
Communication within Teams	
Consent	<ul style="list-style-type: none"> • Gillick competency and Fraser guidelines • CONSENT POLICY • ReSPECT for healthcare professionals
People and Personal Development	
Personal / People Development / Leadership	<ul style="list-style-type: none"> • Accountability and delegation in practice • Your leadership newsletter: May 2022 (kingsfundmail.org.uk)
NHS Employers / HR / NHS Pension	<ul style="list-style-type: none"> • NHS Employers • Pensions Online
Health, Safety & Security	
	<ul style="list-style-type: none"> • NPSA • Control of Substances Hazardous to Health (COSHH) • Weekly Digest Newsletter: 25 May 2022 (govdelivery.com)
Gov UK - NHS	
CQC	<ul style="list-style-type: none"> • GP mythbusters • Examples of outstanding practice for GPs • CQC's upgraded website is now live (govdelivery.com)
MIMS	<ul style="list-style-type: none"> • Prescribing Update
Antibiotic steward-ship / Anti-microbial resistance	
Drug / Device Alerts (MHRA)	
Emergency Situations	<ul style="list-style-type: none"> • The updated National Early Warning Score and its use with suspected Sepsis • Resuscitation Council UK

Vaccines / Medications / Prescribing	<ul style="list-style-type: none"> • Protocol for ordering, storing and handling vaccines • A Competency Framework for all Prescribers • Non-medical prescribing • The Human Medicines Regulations 2012 • RCN - Non-medical prescribers • Royal Pharmaceutical Society • Standards for prescribing • Clinical Negligence Scheme for General Practice
Infection Control / Infection Statics	<ul style="list-style-type: none"> • How to reduce glove use RCN Magazines Royal College of Nursing
Safe Guarding	<ul style="list-style-type: none"> • Female genital mutilation (FGM) • PREVENT • Child protection system in the UK • Safeguarding Adults • Safeguarding children: detailed information
Practice Policies	
Audit	
Information Governance / Record Keeping	<ul style="list-style-type: none"> • Guide to Data Protection • Supporting general practice – Medical record keeping • Care About Me (theprsb.org) • Data Security and Protection Toolkit (dsptoolkit.nhs.uk)
Quality & Service Improvement	
Quality, Service & Improvement	<ul style="list-style-type: none"> • The PRSB • General Practice Assessment Questionnaire (GPAQ) • Healthwatch • NHS Five Year Forward View • General Practice Forward View • NMC • Dr Jon Griffiths • NHS Confed • NHS England » Implementing patient initiated follow-up: guidance for local health and care systems

Roles in General Practice	<ul style="list-style-type: none"> • Standards for nursing associates • GP mythbuster 57: Health Care Assistants in General Practice
Revalidation	<ul style="list-style-type: none"> • Enabling Professionalism in Nursing and Midwifery NIPEC (hscni.net)
Personal Practice & Development	<ul style="list-style-type: none"> • General practice nursing capabilities framework - Skills for Health
Practice Management	<ul style="list-style-type: none"> • Institute of General Practice Management • Practice Index • Improving the National Workforce Reporting Service (NWRS) - NHS Digital • Dr Nikki Kanani: Understand what primary care looks like in your system NHS Confederation • Primary Medical Care Policy and Guidance Manual (PGM) (v4)
Employment	
NHS Self Care & Resilience	<ul style="list-style-type: none"> • Samaritans • Mental Health at work • Calm • Supporting our NHS people • The Hub :: Black Country Healthcare NHS Foundation Trust • NHS England » Looking after you too • Time to Look After Yourself - Why Self-Care is Essential and Not Selfish Tickets, Mon 13 Jun 2022 at 13:00 Eventbrite • Time to Look After Yourself - Why Self-Care is Essential and Not Selfish Tickets, Tue 21 Jun 2022 at 18:00 Eventbrite
Practice Transformation / Innovation Agency	<ul style="list-style-type: none"> • Register with a GP surgery service - NHS Digital • NHS England » Supporting information for ICS leads: Enablers for success: virtual wards including hospital at home
Future of NHS / General Practice	
ICS / PCN	<ul style="list-style-type: none"> • NHS England » Integrated Care Systems: Guidance • NHS England » Next steps for integrating primary care: Fuller stocktake report

QOF / PHOF / DES / LES / NHS Contract / CQRS / CQUIN	
Leadership	<ul style="list-style-type: none"> • Leadership Academy
Personalised Care	
Personalised Care / Self Care / Social Prescribing / Health Coaching	<ul style="list-style-type: none"> • Self Care forum • Personalised Care Institute • Personalised care • Social Prescribing Academy
Group consultation	
Working Differently	
Shared Decision Making	
Equality & Diversity	
Equality & Diversity	<ul style="list-style-type: none"> • Public Health Profiles
Inclusion Health	<ul style="list-style-type: none"> • Health Creation Academic Network
Poverty / Homelessness	<ul style="list-style-type: none"> • Crisis • This is Poverty
Population Health / Health Communities	
Thrive Into Work	<ul style="list-style-type: none"> • Thrive into Work • Thrive into Work Referral form

<i>Continuation of Equality & Diversity</i>	
Health Inequalities	
Trans / Non-binary Health / LGBTQ+	<ul style="list-style-type: none"> • LGBT Foundation • NHS population screening: information for trans and non-binary people • Cervical screening for trans men and/or non-binary people
Migrant / Refugee Health	<ul style="list-style-type: none"> • THE REFUGEE & MIGRANT CENTRE
Traveller / Gypsy / Romany Health	
Veterans Health	<ul style="list-style-type: none"> • The first call for help takes courage
<i>Management of Emergency Situations</i>	
Management of Emergency Situations	<ul style="list-style-type: none"> • The updated National Early Warning Score and its use with suspected Sepsis
111	
First Contact	<ul style="list-style-type: none"> • Supporting general practice – Common pitfalls • Paediatrics for Primary Care (and anyone else) (gppaedstips.blogspot.com)
Red Flags	
Sepsis	<ul style="list-style-type: none"> • Sepsis: recognition, diagnosis and early management • Sepsis guidance implementation advice for adults • Sepsis in Children • Sepsis Trust • RCGP: Sepsis • quick SEPSIS RELATED ORGAN FAILURE ASSESSMENT

<i>Continuation of Emergency Situations</i>	
Therapeutic Monitoring	
OSCE	<ul style="list-style-type: none"> • Geeky Medics • Abdominal Examination - Demonstration - YouTube • Cardiovascular Examination - Demonstration - YouTube • Respiratory Examination - Demonstration - YouTube • Physical Diagnosis Skills - University of Washington School of Medicine
Role Specific	
Cervical Cytology	<ul style="list-style-type: none"> • Guide to the interim assessment • British Association for Cytopathology • Lab Tests Online
Ear Care	<ul style="list-style-type: none"> • Ear Care Centre • RNID
Wound Management	<ul style="list-style-type: none"> • Microworld • Tissue Viability Society • The BLS • Wounds on Thursdays • Wound Expo 2022 - Registration now open (mahealthcareevents.co.uk)
Minor Surgery	
Obtaining Samples / Results	<ul style="list-style-type: none"> • Lab Tests Online

Health Promotion / Health Screening	
Health Promotion / Population Health	<ul style="list-style-type: none"> • Better Health • EXi App • NHS England » Case study: 12,000 extra people shielded in Norfolk using population health management
Health Screening	<ul style="list-style-type: none"> • PHE Screening
PHE / OHID / UKHSA	<ul style="list-style-type: none"> • Knowledge & Library Services • Campaign Resources • Public Health Profiles • Health Publications • Health Profile for England 2021 • English indices of deprivation 2019
NHS Health Check	<ul style="list-style-type: none"> • NHS Health Check
NOIDS / PHE Surveillance / Syndromic Surveillance	<ul style="list-style-type: none"> • Notifications of infectious diseases (NOIDs)
Addiction/Smoking	<ul style="list-style-type: none"> • Drink Coach • Stop smoking interventions and services • Drug misuse prevention review - GOV.UK (www.gov.uk)

Immunisation / Travel Health

- [Vaccinations and infections](#)
- [Joint Committee on Vaccination and Immunisation](#)
- [Immunisation against infectious disease](#)
- [West Midlands Immunisation Service](#)
- [Immunisation information for Health Care Services within the West Midlands area](#)
- [Vaccination of individuals with uncertain or incomplete immunisation status](#)
- [WHO vaccine-preventable diseases: monitoring system. 2020 global summary](#)
- [The Foundations of Immunization: What, Who, When and Why?](#)
- [Winter Vaccination - Prime phase: Social Media content calendar and assets - 2021](#)
- [Measles outbreak training](#)
- [Vaccine Safety Basics](#)
- [UKHSA HPV vaccination guidance | PHE/DH/DWP guideline | Guidelines](#)

Flu

- [Flu and flu vaccinations](#)
- [The national influenza immunisation programme 2021 to 2022](#)
- [Flu vaccines for the 2021 to 2022 season poster](#)
- [Appendix C: Flu vaccinator competency assessment tool](#)
- [Healthcare assistants and flu vaccinations](#)
- [Flu Campaign Resources 2021/22](#)
- [National flu and COVID-19 surveillance reports published](#)
- [National flu immunisation programme plan 2022 to 2023 - GOV.UK \(www.gov.uk\)](#)
- [UKHSA flu immunisation 2022–2023 guideline | PHE/DH/DWP guideline | Guidelines](#)

<i>Continuation of Immunisation / Travel Health</i>	
Covid Vaccine	<ul style="list-style-type: none"> • Greenbook COVID-19 chapter 14a • Updates made to the COVID-19 vaccination elearning programme • HEE e-LfH COVID-19 vaccination programme launches hit 2 million • COVID-19 Vaccine Moderna e-learning now available • GP COVID-19 vaccine dashboard • Coronavirus (COVID-19) vaccines adverse reactions
Children	
Adults	<ul style="list-style-type: none"> • Immunisation patient group direction (PGD) templates • Shingles immunisation programme: introduction of Shingrix® letter • UKHSA HPV vaccination guidance PHE/DH/DWP guideline Guidelines
Vaccine Update	<ul style="list-style-type: none"> • Vaccine update: Issue 325, April 2022 (publishing.service.gov.uk) • Vaccine update: issue 328, May 2022, Shingrix® special edition - GOV.UK (www.gov.uk) • Vaccine update: issue 329, May 2022 - GOV.UK (www.gov.uk)
PGD	
Travel Health	<ul style="list-style-type: none"> • Travel Health Pro • Fit for Travel • Travel Health • Jane Chiodini • Corona.Help

Mental Health / Learning Disability / Disability	
Mental Health	<ul style="list-style-type: none"> • Mental Health • Mental Health UK • Mind • Place2b • Rethink Mental Illness • Young Minds • Every Mind Matters • Calm • Headspace • We Can Talk • Get Your Mind Plan • Feeling low? • Better Health - Every Mind Matters - Resources • ZSA Training • Psychiatry - Medscape • NHS England » NHS fast tracks mental health support for millions of pupils • Loneliness - Every Mind Matters - NHS (www.nhs.uk) • New guidance published on eating-disorder-related medical emergencies News Guidelines
Learning Disability	<ul style="list-style-type: none"> • Learning Disabilities • Learning Disability England • Mencap • Bild • Autism • SEND review: right support, right place, right time - GOV.UK (www.gov.uk) • New annual checks for people with learning disabilities (rcni.com) • Learning disabilities - Annual health checks - NHS (www.nhs.uk)
Disability (Inc. hearing and visual)	<ul style="list-style-type: none"> • Disability Rights UK • Disability Matters • RNID - National hearing loss charity

From Cradle to...

Infant Health	<ul style="list-style-type: none">• Tommys• First Steps Nutrition Trust• Bliss• NHS App - Baby Buddy• NHS App - Peanut• ICON Toolkit• Infant formulae MIMS online• Parent-Infant Foundation (parentinfantfoundation.org.uk)• Recognising cow's milk allergy in primary care
Child Health	<ul style="list-style-type: none">• Unicef• Health Professional Academy• Premature Babies• Child and Maternal Health• Women and Child First• Child Health Information Services• Place2b• Childhood eczema• Childhood asthma• Paediatrics for Primary Care (and anyone else) (gppaedstips.blogspot.com)• Health protection in education and childcare settings - GOV.UK (www.gov.uk)
Adolescent Health	<ul style="list-style-type: none">• Adolescent Health Programme• Society for Adolescent Health and Medicine• Young Minds• Save a life - MenACWY and signs/symptoms uni/FE/student accommodation sticker - Health Publications

<p>Mens Health</p>	<ul style="list-style-type: none">• Mens Health Forum• Mens Health Month• Mens health.org• Mens Health UK• Men and mental health• Men's Mental Health Awareness• Prostate Cancer UK• Orchid Fighting Male Cancer• Prostate Cancer UK Facebook Page• Men's Voices Event• Movember• Men's health guidance NHS Employers• UKHSA HPV vaccination guidance PHE/DH/DWP guideline Guidelines
<p>Women's Health</p>	<ul style="list-style-type: none">• Womens Health Concern• Well Being of Women• Coppa Feel• Menopause Matters• The Menopause Charity• Royal College of Obstetricians and Gynaecologists - Guidelines• Pelvic Partnership• CRUK - Womens Cancer• Breast Cancer Now• Foundation for Women's Cancer• Eve Appeal• Ovarian.Org• Jo's Trust• Well Spring• NICE approves osteoporosis drug for postmenopausal women MIMS online

The Older Population	<ul style="list-style-type: none"> • BGS • Ageing Better • Delirium Champions - YouTube
Carers / Social Care / Care Homes	<ul style="list-style-type: none"> • The Care Provider Alliance • Skills for Care • The Care Workers' Charity • Supporting Adult Carers • Multidisciplinary teams' role in enhancing the health of care home residents - YouTube • NHS England » Enhanced health in care homes • THRIVE - Understanding The Distinct Challenges For Nurses In Care Homes Learning From COVID-19 To Support Resilience and Mental Wellbeing - About (uea.ac.uk)
Young Carers	
Complex Needs	
Family Planning & Sexual Health	
Family Planning	<ul style="list-style-type: none"> • Faculty of Sexual and Reproductive Healthcare Education and Training
Reproductive	<ul style="list-style-type: none"> • Tommys
Sexual Health / Sexual Abuse	<ul style="list-style-type: none"> • Sexual and Reproductive Health Profiles • FSRH Education & Training • UKHSA HPV vaccination guidance PHE/DH/DWP guideline Guidelines
Maternity / Neonate health	<ul style="list-style-type: none"> • Parent-Infant Foundation (parentinfantfoundation.org.uk) • Inquiry into racial injustice in maternity care - Birthrights

Care of Patients with Long Term Conditions	
LTC	<ul style="list-style-type: none"> • Physical Activity for the Prevention and Management of Long-Term Conditions • Expert Insights Chiesi Air
Diabetes & Pre-Diabetes	<ul style="list-style-type: none"> • AZ Medical and Educational Goods and Services in Diabetes • Mumoactive • The mySugr App • Foot Check • NHS England » Healthy Living for people with type 2 diabetes: Patient leaflet • Metformin 'safe in pregnancy', says MHRA MIMS online
Respiratory	<ul style="list-style-type: none"> • Spirometry: step by step • ARTP • British Lung Foundation • The Primary Care Respiratory Society • Are current approaches to sustainability right for your patients and practice? (contains promotional material) (mgp.co.uk) • First metered-dose inhaler certified 'carbon-neutral' MIMS online • Climate and health: applying All Our Health - GOV.UK (www.gov.uk)
COPD	<ul style="list-style-type: none"> • Right Breathe • GOLD COPD 2022 strategy Independent professional body guideline Guidelines • GSK: Imagine if even walking to the park made you breathless (Contains brand information) (cogora.com)
Asthma	<ul style="list-style-type: none"> • FeNO - Fractional exhaled nitric oxide - for the diagnosis and management of Asthma • Asthma UK • Asthma: diagnosis, monitoring and chronic asthma management • GINA 2021: the missing pieces in the childhood asthma puzzle • GINA: Interim Guidance About COVID-19 & Asthma • SIGN and BTS management of asthma in children guideline Independent professional body guideline Guidelines • GSK: How well controlled are your asthma patients? Is it time for a change? (contains brand info) (mgp.co.uk) • High Quality and Low Carbon Asthma Care – Greener Practice

Continuation of Long Term Conditions

Hypertension	<ul style="list-style-type: none"> • British Heart Foundation • Blood Pressure UK • Hypertension in adults: diagnosis and management • Hypertension in adults: diagnosis and treatment • NICE hypertension guideline NICE guideline Guidelines • Hypertension optimisation and management in primary care – CMB TV On Demand (cardiometabology.com)
CVD/AF	<ul style="list-style-type: none"> • QRISK®3-2018 risk calculator • Heart Rhythm Alliance • CVD risk assessment and management • AHA Journals • NHS lipid management pathway NHS guideline Guidelines • CVD Training - Lipid Management Tickets, Multiple Dates Eventbrite • Best practice treatment and management of patients with type 2 diabetes, cardiovascular disease, and heart failure Working party guideline/algorithm Guidelines • NHS statin intolerance pathway PHE/DH/DWP guideline Guidelines • Clinical focus: cardiovascular disease Information Guidelines • CVD Training - Lipid Management Tickets, Multiple Dates Eventbrite • On-demand webinar – anticoagulation management for elderly patients with NVAf (contains promotional content from BMS/Pfizer) (mgp.co.uk)
Heart Failure	<ul style="list-style-type: none"> • British Heart Foundation • British Society Guidelines
Cancer / Oncology	<ul style="list-style-type: none"> • Surviving Thyroid Cancer • Help Us Help You - Lung Cancer Symptoms • Becca Breast Cancer Support App • Breast Cancer Now • MoleCare App • Macmillian • Bowel Cancer UK • New injectable immunotherapy treatment for rare form of triple negative breast cancer recommended by NICE News and features News NICE

Continuation of Long Term Conditions

Chronic Kidney Disease	<ul style="list-style-type: none"> • Kidney.Org • Kidney Quality Improvement Partnership • The modern management of Chronic Kidney Disease – CMB TV On Demand (cardiometabology.com)
Liver Disease	<ul style="list-style-type: none"> • British Liver Trust • Liver Research • BRITISH ASSOCIATION FOR THE STUDY OF THE LIVER • LIVERnORTH • LIVER DISEASE AND CIRRHOSIS
Blood Disorders	<ul style="list-style-type: none"> • Blood Cancer • Thalassaemia • ITP • Haemophilia • UK MDS Forum • Save a life. Give plasma. • Diagnosis and management of pernicious anaemia • Haemochromatosis UK • GPnotebook focus on haematology (contains promotional information) (mailchi.mp)
G.I	<ul style="list-style-type: none"> • GIST Cancer UK
ENT	
G.U	
ME / CFS / Fibromyalgia	<ul style="list-style-type: none"> • NICE outlines steps needed to put ME/CFS guideline into practice News and features News NICE
Neurological Conditions	<ul style="list-style-type: none"> • The Brain Tumour Charity • Narcolepsy.Org • ACNR • NICE epilepsies guideline NICE guideline Guidelines
Musculoskeletal Conditions	<ul style="list-style-type: none"> • Rheumatology • National Axial Spondyloarthritis Society • Musculoskeletal health • Musculoskeletal health: 5 year prevention strategic framework • Faculty of Occupational Medicine • Guide to embedding your first contact physiotherapy service • NICE approves osteoporosis drug for postmenopausal women MIMS online

Continuation of Long Term Conditions

<p>Endocrine Disorders / Metabolic Disorders</p>	<ul style="list-style-type: none"> • Endocrinology • Turner Syndrome Support Society • Thyroid Eye Disease • British Thyroid Foundation • Thyroid UK • Pituitary • Addisons Disease • Parathyroid UK • The Royal Osteoporosis Society • Metabolic Support UK
<p>Frailty</p>	<ul style="list-style-type: none"> • Recognising frailty • Identifying frailty • CLINICAL FRAILITY SCALE
<p>Dementia</p>	<ul style="list-style-type: none"> • Dementia UK • Understanding dementia • My House of Memories - NHS App • Dementia profile updates • Caring for Carers Dementia Support Group (Tuesdays) • Delirium Champions • Medscape Dementia
<p>Allergy / Auto-immune / Genetic Conditions</p>	<ul style="list-style-type: none"> • Allergy UK • Rheumatology • Addisons Disease

Continuation of Long Term Conditions

Dermatology	<ul style="list-style-type: none"> • British Association of Dermatologists • Eczema • The British Skin Foundation • Acne vulgaris: management • The Primary Care Dermatology Society • Acne.org • Allergy UK • Urticaria • Hives • Sunburn • Causes of cancer and reducing your risk • What is Rosacea? • Rosecea • Herpes.org • Shingles • Fungal Skin Infection - Foot • The Psoriasis Association • Psoriasis • Melanoma • Skin Health Information • British Association of Plastic Reconstructive and Aesthetic Surgeons • Warts and verrucae • Diagnosing eczema (contains promotional material) (mgp.co.uk)
Obesity	<ul style="list-style-type: none"> • Obesity UK
Pain Management	<ul style="list-style-type: none"> • Pain Concern • UK career framework for pain nurses
Genomics	
Multi-Morbidity	<ul style="list-style-type: none"> • Multimorbidity • Multimorbidity / multiple long-term conditions (MLTC)

Continuation of Long Term Conditions

Minor Illness / First Contact Assessment / OSCE	<ul style="list-style-type: none"> • Fact Sheets - Self Care Forum
Other / Case Studies	<ul style="list-style-type: none"> • Ultra Rare Disease Disorders And Disabilities Foundation • MyCognition Home - NHS App • The Cold Weather Plan for England • New joint College guidance maps clinical training to glaucoma patient pathways - College of Optometrists (college-optometrists.org) • Four more monkeypox cases in UK bring total to seven News Guidelines
End of Life Care	
End of Life Care	<ul style="list-style-type: none"> • ReSPECT for healthcare professionals • Hospice UK • Support at the end of life
Covid-19	
Covid-19	<ul style="list-style-type: none"> • Covid Live
Long Covid	<ul style="list-style-type: none"> • Supporting your recovery after COVID-19 • Long Covid Toolkit • Long term effects of COVID (Long COVID) • Post-COVID Syndrome (Long COVID) • COVID-19 Yorkshire Rehabilitation Screening Tool • FOM Guidance • Lung health care after COVID-19
Monkey Pox	<ul style="list-style-type: none"> • Monkeypox: background information - GOV.UK (www.gov.uk) • Monkeypox cases confirmed in England – latest updates • Information on monkeypox and our investigation into recent cases - UK Health Security Agency (blog.gov.uk) • Monkeypox - a sense of Déjà vu?

News & Views	
Digital News / Remote Consultations	<ul style="list-style-type: none"> • Digital Health News Webinars • Digital Health News • NHS Digital • Your daily news updates from Digital Health (campaign-archive.com) • Register with a GP surgery service - NHS Digital
PSNC News / Pharmacy	<ul style="list-style-type: none"> • National Pharmacy Association • Royal Pharmaceutical Society • Medicines Learning Portal • Specialist Pharmacy Service • PSNC Newsletter - 30th May
Pulse / GP Online / HSJ / NB Medical	<ul style="list-style-type: none"> • GP Online • HSJ • Pulse Today
Primary Care Update / PCC / PPP	<ul style="list-style-type: none"> • Public Policy Projects News • Primary Care Bulletin
Health Care Leaders Newsletters	
Kings Fund	<ul style="list-style-type: none"> • The Kings Fund • Ideas that change health and care • Your leadership newsletter: May 2022 (kingsfundmail.org.uk)
World Health Organisation	<ul style="list-style-type: none"> • WHO • OpenWHO

Continuation News & Views

<p>IHCT / CCG / STP / Healthier Futures</p>	<ul style="list-style-type: none"> • Healthier Futures • Black Country & West Birmingham CCG • Dudley Integrated Health and Care • Dudley CCG • Home :: Black Country Healthcare NHS Foundation Trust
<p>NHSI / NHSE</p>	
<p>University / Student Nurses</p>	
<p>Medisa / Univadis / Geeky Medics / GP Notebook / Medscape</p>	<ul style="list-style-type: none"> • Univadis Newsletter • Univadis Nurses Headlines • Medisa • Geeky Medics • Medscape Nurses • GP Notebook • GPnotebook quick update (contains promotional info from GSK: Are you following NICE COPD Guidelines?) (campaign-archive.com) • GPnotebook quick update (contains GSK brand info: COPD patient, "I am worried about getting a different inhaler") (mailchi.mp)
<p>Nurse Guidelines</p>	<ul style="list-style-type: none"> • Expert Insights Chiesi Air • Upd
<p>The Health Foundation</p>	<ul style="list-style-type: none"> • The Health Foundation • Newsletter: Evidence-informed decisions to improve health and care (healthfdn.org.uk)
<p>The Health Care Leaders Update</p>	<ul style="list-style-type: none"> • Health Care Leader News
<p>Practice Index</p>	
<p>Innovation Agency</p>	<ul style="list-style-type: none"> • Innovation Agency Exchange
<p>NMC</p>	<ul style="list-style-type: none"> • NMC • NMC set to overhaul public health and community nursing standards (rcni.com)

Continuation News & Views

RCN

- [RCN](#)
- [Leading and shaping our profession | Blogs | Royal College of Nursing \(rcn.org.uk\)](#)
- ['Some nurses are effectively working for free' | RCN Magazines | Royal College of Nursing](#)
- [London mental health trust seeks local nurses to join its team \(rcni.com\)](#)
- [What did nurse researchers learn from the COVID-19 pandemic? \(rcni.com\)](#)
- [Nursing in the Royal Navy: what are the career options? \(rcni.com\)](#)
- [Home - Here for life](#)
- [Showcasing the contribution of nursing on International Nurses' Day | Royal College of Nursing \(rcn.org.uk\)](#)
- [RCN England NHS Pensions Update webinar 25 May | Royal College of Nursing](#)
- [London mental health trust seeks local nurses to join its team \(rcni.com\)](#)
- [Practice learning supervision: how to keep relationships positive \(rcni.com\)](#)
- [RCN exhibition documents 100 years of learning disability nursing \(rcni.com\)](#)
- [What did nurse researchers learn from the COVID-19 pandemic? \(rcni.com\)](#)
- [Why I helped to prosecute a patient after I was assaulted at work \(rcni.com\)](#)
- [Nursing Workforce Standards | Professional Development | Royal College of Nursing \(rcn.org.uk\)](#)
- [Raising concerns toolkit | Royal College of Nursing \(rcn.org.uk\)](#)
- ['Radical action needed to boost nursing workforce' | News | Royal College of Nursing \(rcn.org.uk\)](#)
- [Neurodiverse nursing staff new RCN guidance provides practical advice and support | News | Royal College of Nursing](#)
- [The importance of clinical supervision | Blogs | Royal College of Nursing \(rcn.org.uk\)](#)
- [Progressive health care that delivers for LGBTQ people | Royal College of Nursing \(rcn.org.uk\)](#)
- [NHS mileage allowance rates | Royal College of Nursing \(rcn.org.uk\)](#)
- [Make period products free for struggling nurses, say unions \(rcni.com\)](#)
- [Nurses' mandatory learning disability training proves a success \(rcni.com\)](#)
- [NHS unsocial hours payments: a quick guide for nurses \(rcni.com\)](#)
- [Supporting newly qualified nurses to develop their leadership skills \(rcni.com\)](#)
- [Nursing Workforce Standards | Professional Development | Royal College of Nursing \(rcn.org.uk\)](#)

Continuation News & Views

<p>Nursing in Practice / Nursing Standard / Independent Nurse</p>	<ul style="list-style-type: none"> • Nursing Times • Independent Nurse Magazine • Practice Nursing • Practice Nursing Community • Practice Nursing in Practice • GPN Bulletin • NMC set to overhaul public health and community nursing standards (rcni.com) • New annual checks for people with learning disabilities (rcni.com) • Nurse staffing: can retirees solve the patient care crisis? (rcni.com) • Will renewed NHS parking charges push staff out of nursing? (rcni.com) • Reflecting on 'insider' and 'outsider' positionality when undertaking culturally sensitive research with young Pakistani men: insights from a female researcher (rcni.com) • Independent Nurse May 2022 (mydigitalpublication.co.uk)
<p>QNI</p>	<ul style="list-style-type: none"> • QNI • Events – The Queen's Nursing Institute (qni.org.uk) • Individual Actions for a Greener Planet – The Queen's Nursing Institute (qni.org.uk) • Talk To Us © – The Queen's Nursing Institute (qni.org.uk) • Application for QNI Petrol Grant 2022 • QNI Head of Communications raises funds for humanitarian relief in Ukraine – The Queen's Nursing Institute • QNI Responds to NMC's Announcement on Community Nursing Standards – The Queen's Nursing Institute
<p>CMO / CNO</p>	
<p>WHO</p>	<ul style="list-style-type: none"> • WHO • MOOCs - start to enjoy learning now OpenWHO
<p>Nice</p>	<ul style="list-style-type: none"> • NICE • NICE recommends offering app-based treatment for people with insomnia instead of sleeping pills News and features News NICE • NICE News for Health and Social Care May 2022 (mailchi.mp)

Continuation News & Views

RCGP / BMA / The Lancet	<ul style="list-style-type: none"> • The Lancet • British Medical Journal • Royal College of General Practitioners • Take part in the consultation - GMC (gmc-uk.org) • The UK Government 'failed in its duty of care' to doctors and the healthcare workforce in its handling of the pandemic, says BMA - BMA media centre - BMA
Midlands Academic Health Science Network	<ul style="list-style-type: none"> • WMAHSN Network • WMAHSN May Update
Healthwatch	<ul style="list-style-type: none"> • Healthwatch
Other	

Free Training / Webinars / Meetings / CPD

Development / Information and Knowledge	<ul style="list-style-type: none"> • FutureProof Health Training & Events • Red Whale Training • LATEST WEBINARS FROM ISSUES & ANSWERS • Nursing Events • NNGG Conference week - Register today (mahealthcareevents.co.uk) • Agenda - Guidelines Live 2022 • On-demand webinar – anticoagulation management for elderly patients with NVAf (contains promotional content from BMS/Pfizer) (mgp.co.uk) 30 May, 3pm – 4pm. Partnerships with people and communities in primary care: The art of the possible • 9 June, 5pm - 6pm. General practice webinar • London 2022 Registration - MIMS Learning Live • CVD Training - Lipid Management Tickets, Multiple Dates Eventbrite • Managing severe asthma in patients in primary care—promotional webinar invitation (webinar commissioned by Boehringer Ingelheim Limited) (mgp.co.uk) • Agenda Primary Care Learnings (mimsworkshops.co.uk) • The modern management of Chronic Kidney Disease – CMB TV On Demand (cardiometabology.com) • Hypertension optimisation and management in primary care – CMB TV On Demand (cardiometabology.com) • MOOCs - start to enjoy learning now OpenWHO • AstraZeneca: Invitation to Long Term Conditions Leadership Forum (AstraZeneca medicines will be discussed at this meeting) • New eLearning module: Deep dive on DPP-4 inhibitors (contains promotional material from Boehringer Ingelheim) (mgp.co.uk) • London 2022 Registration - MIMS Learning Live
---	--

Continuation of Free Training / Webinars / Meetings / CPD

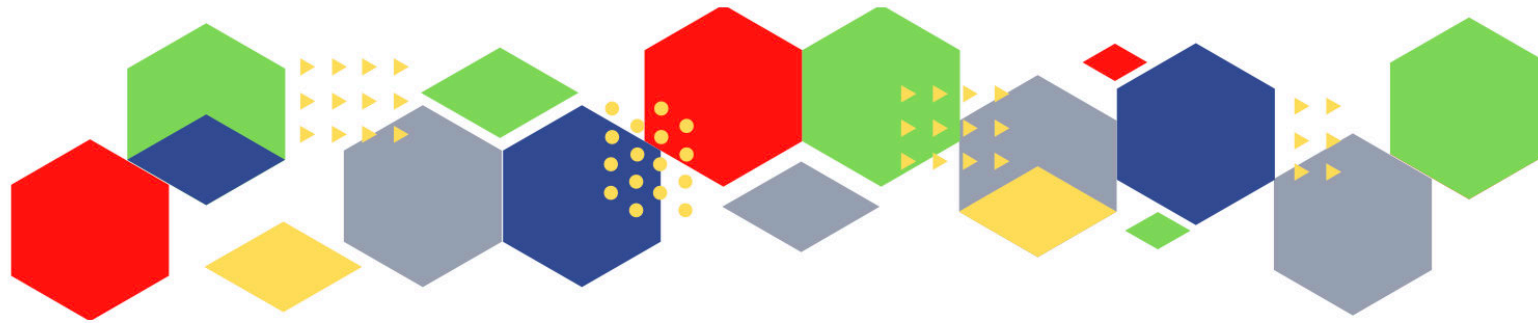
Future Proof Health Training	<ul style="list-style-type: none"> • Vaccination & Immunisation Updates 2022 • Diabetes Review: Getting it right from the start • Type 2 Diabetes and the medication choices in diabetes care and covid • Menopause Day • ENT 1/2 Day
BCWB Training Hub	<ul style="list-style-type: none"> • Latest news from the Black Country and West Birmingham Training Hub (campaign-archive.com)
Evidence based care	
Eventbrite	<ul style="list-style-type: none"> • Future Proof Health Eventbrite Page • CVD Training - Lipid Management Tickets, Multiple Dates Eventbrite • Time to Look After Yourself - Why Self-Care is Essential and Not Selfish Tickets, Mon 13 Jun 2022 at 13:00 Eventbrite • Time to Look After Yourself - Why Self-Care is Essential and Not Selfish Tickets, Tue 21 Jun 2022 at 18:00 Eventbrite
e-Learning for Health	<ul style="list-style-type: none"> • New elearning session highlights dermatological side effects of COVID-19 • New COVID-19 community contact tracing programme now available • Staff Recovery Resources for critical care and the wider health workforce recovering from the COVID-19 pandemic • MindEd infographic highlights programme's success during COVID-19 • Long COVID elearning session available • The Changing Story of Cancer programme • Updates to the Flu Immunisation elearning programme for the 2021/22 flu season • Flu Immunisation programme - elearning • Foundation elearning programme update September 2021 • Virtual wards enabled by technology - elearning for healthcare (e-lfh.org.uk)

Continuation of Free Training / Webinars / Meetings / CPD

YouTube	<ul style="list-style-type: none"> • NHS England • Black Country Healthcare - YouTube
Blogs/Vlogs	<ul style="list-style-type: none"> • An increase in Hepatitis Cases in Children - UK Health Security Agency (blog.gov.uk) • UKHSA'S weekly surveillance report: focusing on 'Pillar 1' data - UK Health Security Agency (blog.gov.uk) • What is Lyme disease, and why do we need to be tick aware? - UK Health Security Agency (blog.gov.uk) • What to do if you have symptoms of a respiratory infection including COVID-19, or a positive COVID-19 test - UK Health Security Agency (blog.gov.uk) • London's communities remain vulnerable to COVID-19 without full vaccine protection - UK Health Security Agency • How science can protect us from the health effects of climate change - UK Health Security Agency • Thunderstorm asthma and public health – looking back to move forward - UK Health Security Agency • Taking the sting out of new and emerging health threats - UK Health Security Agency
Area Bulletins	
Free to RCN	<ul style="list-style-type: none"> • 31 May - RCN Worcestershire branch meeting (in-person event - no online facility) • 13 June - RCN South Staffordshire Learning Event: Factors involved for the smooth introduction of criteria-led discharge from hospital • 22 June - RCN North Staffordshire Learning Event: Respiratory updates – current trends in community respiratory care • 20 July - RCN North Staffordshire Learning Event: Factors involved for the smooth introduction of criteria-led discharge from hospital • 1 Aug - RCN Birmingham East, North and Solihull Learning Event: Transgender awareness - adapting your practice to support transgender patients and service users • 10 Aug - RCN Birmingham East, North and Solihull branch meeting • RCN England NHS Pensions Update webinar 25 May Royal College of Nursing • NVEMAY22 - Immunisation, CVD and Respiratory - NIP 365 (nursinginpractice365.uk)

Continuation of Free Training / Webinars / Meetings / CPD

Podcasts	<ul style="list-style-type: none"> • The Nursing Handover Podcast • Nursing Standard Podcasts • What Makes a Nurse? • The MedicsPro Podcast • Nursing Matters • Welcome to the BJN Podcast • Why we care • EBN podcast • This Is Nursing • Maroon Mindset • Teach me, I'm a Nurse • Past Caring • RCGP eLearning podcast • The BMJ Podcast • Primary Care Network podcasts • The Professional Support Unit's Pandemic Podcast • How can public health nurses help deliver the Healthy Child Programme this winter? • Talking GP • Podcast – Matthew Winn – ICS Incoming.... Primary Care and Community Trusts • NB Hot Topics Podcast • Podcast: Will the rising cost of living be paid for by our health? (healthfdn.org.uk) • Lovegrove on Health - Podcast episode #4 - Skills for Health • Latest podcast episodes from GPnotebook (mailchi.mp)
Research	<ul style="list-style-type: none"> • Science Daily • Multimorbidity / multiple long-term conditions (MLTC) • Funding bodies launch consultation on future research assessment • Results of Research Excellence Framework are published – UKRI • Leading UK research facilities to move closer to net zero – UKRI
Freebies	<ul style="list-style-type: none"> • Blue Light Card
Other	



Thank you for reading Future Proof Health's weekly news!

If you missed past issues, please click [here](#) to view them

More information can be found on our website, [here](#)

Don't forget to like us on [Facebook](#) & Follow us on [Twitter](#)

