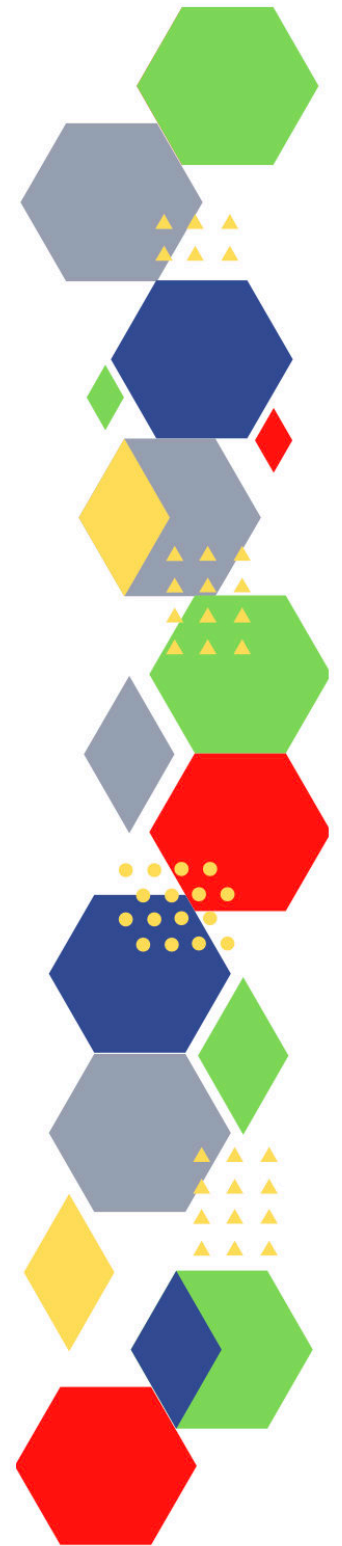




Future Proof Health Presents

Weekly News

4th November 2022



Communication	
Communication with Patients	<ul style="list-style-type: none"> <li>• <a href="#">Resources and guidance are also available to help practices communicate with patients (cmail20.com)</a></li> <li>• <a href="#">Our plan for improving access for patients and supporting general practice (england.nhs.uk)</a></li> </ul>
Communication within Teams	
Consent	<ul style="list-style-type: none"> <li>• <a href="#">Gillick competency and Fraser guidelines</a></li> <li>• <a href="#">ReSPECT for healthcare professionals</a></li> </ul>
People and Personal Development	
Personal / People Development / Leadership	<ul style="list-style-type: none"> <li>• <a href="#">Accountability and delegation in practice</a></li> </ul>
NHS Employers / HR / NHS Pension	<ul style="list-style-type: none"> <li>• <a href="#">NHS Employers</a></li> <li>• <a href="#">Pensions Online</a></li> <li>• <a href="#">NHS - Nurses and Midwives intro (isio.com)</a></li> <li>• <a href="#">Why stick with the scheme? (rcn.org.uk)</a></li> </ul>
Health, Safety & Security	
	<ul style="list-style-type: none"> <li>• <a href="#">NPSA</a></li> <li>• <a href="#">Control of Substances Hazardous to Health (COSHH)</a></li> <li>• <a href="#">Materials and guidance are available to download for use in primary care settings to encourage patients to treat NHS staff with respect (phe.gov.uk)</a></li> <li>• <a href="#">Weekly Digest Newsletter: 27 October 2022 (govdelivery.com)</a></li> </ul>
Gov UK - NHS	
CQC	<ul style="list-style-type: none"> <li>• <a href="#">GP mythbusters</a></li> <li>• <a href="#">Prescribing the resolution of conflict in general practice</a></li> <li>• <a href="#">CQC reports on its review of NHS Blood and Transplant - Care Quality Commission</a></li> <li>• <a href="#">News from the Care Quality Commission: October 2022</a></li> <li>• <a href="#">CQC's new regulatory model</a></li> <li>• <a href="#">State of Care 2021/22 (govdelivery.com)</a></li> </ul>
MIMS	<ul style="list-style-type: none"> <li>• <a href="#">Prescribing Update</a></li> </ul>
Antibiotic steward-ship / Anti-microbial resistance	

Health Protection Review	
Drug / Device Alerts (MHRA)	<ul style="list-style-type: none"> <li>• <a href="https://mhradrugsafety.org.uk">Drug Safety Update (mhradrugsafety.org.uk)</a></li> </ul>
Emergency Situations	<ul style="list-style-type: none"> <li>• <a href="#">Resuscitation Council UK</a></li> </ul>
Infection Control / Infection Statics	<ul style="list-style-type: none"> <li>• <a href="#">NHS England » National infection prevention and control</a></li> <li>• <a href="https://createsend1.com">infection prevention control (IPC) guidelines (createsend1.com)</a></li> <li>• <a href="#">IPC face covering resources for NHS settings (updated September 2021) - Coronavirus Resource centre (phe.gov.uk)</a></li> </ul>
Vaccines / Medications / Prescribing	<ul style="list-style-type: none"> <li>• <a href="#">Protocol for ordering, storing and handling vaccines</a></li> <li>• <a href="#">A Competency Framework for all Prescribers</a></li> <li>• <a href="#">Non-medical prescribing</a></li> <li>• <a href="#">The Human Medicines Regulations 2012</a></li> <li>• <a href="#">RCN - Non-medical prescribers</a></li> <li>• <a href="#">Royal Pharmaceutical Society</a></li> <li>• <a href="#">Standards for prescribing</a></li> <li>• <a href="#">Clinical Negligence Scheme for General Practice</a></li> <li>• <a href="#">Home - electronic medicines compendium (emc)</a></li> <li>• <a href="#">Drug shortages - live tracker   MIMS online</a></li> <li>• <a href="#">Medical exemption certificates   NHSBSA</a></li> <li>• <a href="#">NHS England » Direct oral anticoagulants (DOAC) infographic</a></li> </ul>
Safe Guarding	<ul style="list-style-type: none"> <li>• <a href="#">Female genital mutilation (FGM)</a></li> <li>• <a href="#">PREVENT</a></li> <li>• <a href="#">Child protection system in the UK</a></li> <li>• <a href="#">Safeguarding Adults</a></li> <li>• <a href="#">Safeguarding children: detailed information</a></li> <li>• <a href="https://www.gov.uk">Domestic abuse victim services, England and Wales: 2022 (www.gov.uk)</a></li> <li>• <a href="https://govdelivery.com">Dudley Financial Abuse Alliance - September 2022 (govdelivery.com)</a></li> <li>• <a href="#">Wolverhampton Safeguarding Together</a></li> <li>• <a href="#">Walsall Safe Guarding Training</a></li> <li>• <a href="#">Wolverhampton Safeguarding Together - Training Update October 2022</a></li> </ul>
Practice Policies: Practice Management / Accountability Duty of Candour	<ul style="list-style-type: none"> <li>• <a href="https://insidegovernment.co.uk">The Duty of Candour in Healthcare Forum 2022 (insidegovernment.co.uk)</a></li> <li>• <a href="#">ICB - Important Message</a></li> <li>• <a href="https://moderngov.com">Developing Effective Written Responses to Complaints in Healthcare (moderngov.com)</a></li> </ul>

Audit	
Information Governance / Record Keeping	<ul style="list-style-type: none"> <li>• <a href="#">Guide to Data Protection</a></li> <li>• <a href="#">Supporting general practice – Medical record keeping</a></li> <li>• <a href="#">PRSB standards now easier to use</a></li> <li>• <a href="#">ICB - Important Message</a></li> <li>• <a href="#">NHS England » Offering patients access to their future health information</a></li> </ul>
<b>Quality &amp; Service Improvement</b>	
Quality, Service & Improvement	<ul style="list-style-type: none"> <li>• <a href="#">The PRSB</a></li> <li>• <a href="#">General Practice Assessment Questionnaire (GPAQ)</a></li> <li>• <a href="#">Healthwatch</a></li> <li>• <a href="#">NHS Five Year Forward View</a></li> <li>• <a href="#">General Practice Forward View</a></li> <li>• <a href="#">NMC</a></li> <li>• <a href="#">Dr Jon Griffiths Blog</a></li> <li>• <a href="#">NHS Confed</a></li> <li>• <a href="#">Quality Reporting</a></li> <li>• <a href="#">Black Country ICS Development Workshops (campaign-archive.com)</a></li> <li>• <a href="#">NHS England » Improving experience of care: A shared commitment for those working in health and care systems</a></li> </ul>
Roles in General Practice Including AHP	<ul style="list-style-type: none"> <li>• <a href="#">Standards for nursing associates</a></li> <li>• <a href="#">GP mythbuster 57: Health Care Assistants in General Practice</a></li> <li>• <a href="#">NHS England » Allied Health Professions</a></li> <li>• <a href="#">NHS General Practice Team   Campaign Resource Centre (phe.gov.uk)</a></li> <li>• <a href="#">Health and Well-being Coaching Have Your Say!</a></li> </ul>
Revalidation	
Personal Practice & Development	
Practice Management	<ul style="list-style-type: none"> <li>• <a href="#">Institute of General Practice Management</a></li> <li>• <a href="#">Practice Index</a></li> </ul>
EMIS / System One	<ul style="list-style-type: none"> <li>• <a href="#">Engage Check-in issue after recent EMIS updates</a></li> </ul>

<p>Recruitment Employment / Retirement / Legacy Nursing</p>	<ul style="list-style-type: none"> <li>• <a href="https://www.england.nhs.uk">GP recruitment and retention initiatives (england.nhs.uk)</a></li> <li>• <a href="#">New to Partnership Payment Scheme</a></li> <li>• <a href="#">General Practice Fellowship programme</a></li> <li>• <a href="#">Supporting Mentors Scheme</a></li> <li>• <a href="#">Primary care flexible staff pools</a></li> <li>• <a href="https://future.nhs.uk">GP Career Support Hub (future.nhs.uk)</a></li> <li>• <a href="#">Home · Primary Care Workforce Portal</a></li> </ul>
<p>NHS Self Care &amp; Resilience</p>	<ul style="list-style-type: none"> <li>• <a href="#">Samaritans</a></li> <li>• <a href="#">Mental Health at work</a></li> <li>• <a href="#">Calm</a></li> <li>• <a href="#">Supporting our NHS people</a></li> <li>• <a href="#">The Hub :: Black Country Healthcare NHS Foundation Trust</a></li> <li>• <a href="#">NHS England » Looking after your career</a></li> <li>• <a href="https://www.england.nhs.uk">support lines and wellbeing apps (england.nhs.uk)</a></li> <li>• <a href="#">NHS England » Supporting colleagues affected by Long COVID</a></li> </ul>
<p>Practice Transformation / Innovation Agency</p>	<ul style="list-style-type: none"> <li>• <a href="#">Ask Your Pharmacist Week 2022 - NPA » NPA</a></li> </ul>
<p>Future of NHS / General Practice / NHS Recovery</p>	<ul style="list-style-type: none"> <li>• <a href="#">NHS England</a></li> <li>• <a href="#">NHS England » Primary care</a></li> <li>• <a href="#">NHS mandate 2022 to 2023</a></li> <li>• <a href="https://publishing.service.gov.uk">The General Medical Services Statement of Financial Entitlements (Amendment) (No. 5) Directions 2022 (publishing.service.gov.uk)</a></li> <li>• <a href="#">NHS England » Latest updates</a></li> <li>• <a href="#">Future of General Practice</a></li> </ul>
<p>ICS / ICB / ICP / PCN Commissioning</p>	<ul style="list-style-type: none"> <li>• <a href="https://www.england.nhs.uk">Integrated care (england.nhs.uk)</a></li> <li>• <a href="https://campaign-archive.com">Black Country ICS Development Workshops (campaign-archive.com)</a></li> <li>• <a href="#">Integrated workforce thinking across systems   NHS Employers</a></li> <li>• <a href="https://kingsfund.org.uk">Integrated care in practice   The King's Fund (kingsfund.org.uk)</a></li> </ul>
<p>QOF / PHOF / DES / LES / NHS Contract / CQRS / CQUIN</p>	<ul style="list-style-type: none"> <li>• <a href="#">NHS England » GP Contract</a></li> </ul>

Leadership / Innovation	<ul style="list-style-type: none"> <li>• <a href="#">Leadership Academy</a></li> </ul>
Greener NHS	<ul style="list-style-type: none"> <li>• <a href="#">Greener Allied Health Professional hub (england.nhs.uk)</a></li> <li>• <a href="#">Leading Sustainability in Health and Social Care - YouTube</a></li> <li>• <a href="#">Environment Sustainability in respiratory care</a></li> </ul>
Personalised Care	
Personalised Care / Self Care / Social Prescribing / Health Coaching	<ul style="list-style-type: none"> <li>• <a href="#">Self Care forum</a></li> <li>• <a href="#">Personalised Care Institute</a></li> <li>• <a href="#">Personalised care</a></li> <li>• <a href="#">Social Prescribing Academy</a></li> </ul>
Group consultation	
Working Differently	
Shared Decision Making	<ul style="list-style-type: none"> <li>• <a href="#">Personalised Care Institute</a></li> </ul>
Equality & Diversity	
Equality & Diversity	<ul style="list-style-type: none"> <li>• <a href="#">Public Health Profiles</a></li> </ul>
Inclusion Health	<ul style="list-style-type: none"> <li>• <a href="#">Health Creation Academic Network</a></li> <li>• <a href="#">Inequality on the inside</a></li> </ul>
Poverty / Homelessness	<ul style="list-style-type: none"> <li>• <a href="#">Crisis</a></li> <li>• <a href="#">This is Poverty</a></li> <li>• <a href="#">Homeless and Inclusion Health Nurses – Practitioners Addressing Inequalities in Health – The Queen's Nursing Institute (qni.org.uk)</a></li> <li>• <a href="#">Poverty and the health and care system   The King's Fund (kingsfund.org.uk)</a></li> <li>• <a href="#">Patient experience literature review</a></li> </ul>
Population Health / Health Communities	

Thrive Into Work	<ul style="list-style-type: none"> <li>• <a href="#">Thrive into Work</a></li> <li>• <a href="#">Thrive into Work Referral form</a></li> </ul>
Health Inequalities	<ul style="list-style-type: none"> <li>• <a href="#">NHS News</a></li> <li>• <a href="#">Health disparities and health inequalities: applying All Our Health - GOV.UK (www.gov.uk)</a></li> <li>• <a href="#">NICE and health inequalities   What we do   About   NICE</a></li> </ul>
Trans / Non-binary Health / LGBTQ+	<ul style="list-style-type: none"> <li>• <a href="#">LGBT Foundation</a></li> <li>• <a href="#">Surgery staff grab sheet (squarespace.com)</a></li> <li>• <a href="#">Trans inclusive organisations — TransActual</a></li> <li>• <a href="#">TransActual - Healthcare</a></li> <li>• <a href="#">CliniQ</a></li> </ul>
Migrant / Refugee Health	<ul style="list-style-type: none"> <li>• <a href="#">THE REFUGEE &amp; MIGRANT CENTRE</a></li> </ul>
Traveller / Gypsy / Romany Health	<ul style="list-style-type: none"> <li>• <a href="#">Gypsy Roma and Traveller History and Culture   The Traveller Movement</a></li> <li>• <a href="#">Friends, Families and Travellers (gypsy-traveller.org)</a></li> </ul>
Veterans Health	<ul style="list-style-type: none"> <li>• <a href="#">The first call for help takes courage</a></li> <li>• <a href="#">apply for the RCGP's Veteran Friendly accreditation (createsend1.com)</a></li> </ul>
<b>Management of Emergency Situations</b>	
Management of Emergency Situations	
111 / Emergency Care	
First Contact	<ul style="list-style-type: none"> <li>• <a href="#">Supporting general practice – Common pitfalls</a></li> <li>• <a href="#">Paediatrics for Primary Care (and anyone else) (gppaedstips.blogspot.com)</a></li> </ul>
Red Flags	
Sepsis	<ul style="list-style-type: none"> <li>• <a href="#">Sepsis: recognition, diagnosis and early management</a></li> <li>• <a href="#">Sepsis guidance implementation advice for adults</a></li> <li>• <a href="#">Sepsis in Children</a></li> <li>• <a href="#">Sepsis Trust</a></li> <li>• <a href="#">quick SEPSIS RELATED ORGAN FAILURE ASSESSMENT</a></li> </ul>
Therapeutic Monitoring	

OSCE	<ul style="list-style-type: none"> <li>• <a href="#">Geeky Medics</a></li> <li>• <a href="#">Abdominal Examination - Demonstration - YouTube</a></li> <li>• <a href="#">Cardiovascular Examination - Demonstration - YouTube</a></li> <li>• <a href="#">Respiratory Examination - Demonstration - YouTube</a></li> <li>• <a href="#">Physical Diagnosis Skills - University of Washington School of Medicine</a></li> </ul>
<b>Role Specific</b>	
Cervical Cytology	<ul style="list-style-type: none"> <li>• <a href="#">Guide to the interim assessment</a></li> <li>• <a href="#">British Association for Cytopathology</a></li> <li>• <a href="#">Lab Tests Online</a></li> <li>• <a href="#">Cytology Newsletter</a></li> </ul>
Ear Care	<ul style="list-style-type: none"> <li>• <a href="#">Ear Care Centre</a></li> <li>• <a href="#">RNID</a></li> </ul>
Wound Management / Compression	<ul style="list-style-type: none"> <li>• <a href="#">Microworld</a></li> <li>• <a href="#">Tissue Viability Society</a></li> <li>• <a href="#">The BLS</a></li> <li>• <a href="#">Pressure Ulcers and Management - Wounds on Thursday - Webinar series Tickets, Multiple Dates   Eventbrite</a></li> </ul>
Minor Surgery	
Obtaining Samples / Results	<ul style="list-style-type: none"> <li>• <a href="#">Lab Tests Online</a></li> <li>• <a href="#">PCR on Poo</a></li> </ul>
<b>Health Promotion / Health Screening</b>	
Health Promotion / Population Health	<ul style="list-style-type: none"> <li>• <a href="#">Better Health</a></li> <li>• <a href="#">SHAPE   Strategic Health Asset Planning and Evaluation (shapeatlas.net)</a></li> <li>• <a href="#">Why do diagnostics matter?   The King's Fund (kingsfund.org.uk)</a></li> <li>• <a href="#">Are community diagnostic centres really moving care closer to home?   The King's Fund (kingsfund.org.uk)</a></li> <li>• <a href="#">Public health message to all NHS service providers regarding Ebola virus outbreak in Uganda (Sudan ebolavirus) - GOV.UK (www.gov.uk)</a></li> </ul>
Health Screening	<ul style="list-style-type: none"> <li>• <a href="#">PHE Screening</a></li> <li>• <a href="#">Why do diagnostics matter?   The King's Fund (kingsfund.org.uk)</a></li> </ul>



<i>Continuation of Health Promotion / Health Screening</i>	
PHE / OHID / UKHSA	<ul style="list-style-type: none"> <li>• <a href="#">Knowledge &amp; Library Services</a></li> <li>• <a href="#">Campaign Resources</a></li> <li>• <a href="#">Public Health Profiles</a></li> <li>• <a href="#">Health Publications</a></li> <li>• <a href="#">Health Profile for England 2021</a></li> <li>• <a href="#">English indices of deprivation 2019</a></li> </ul>
NHS Health Check	<ul style="list-style-type: none"> <li>• <a href="#">NHS Health Check</a></li> </ul>
UK GOV Flu / Covid / Bird Flu	<ul style="list-style-type: none"> <li>• <a href="#">Avian influenza in wild birds (outlook.com)</a></li> <li>• <a href="#">Avian influenza (bird flu) in Europe, Russia and the UK (outlook.com)</a></li> <li>• <a href="#">Monkeypox outbreak: epidemiological overview (outlook.com)</a></li> <li>• <a href="#">Investigation of SARS-CoV-2 variants: technical briefings - GOV.UK (outlook.com)</a></li> <li>• <a href="#">National flu and COVID-19 surveillance reports: 2022 to 2023 season - GOV.UK (outlook.com)</a></li> </ul>
UK GOV - General Practice	<ul style="list-style-type: none"> <li>• <a href="#">Seasonal influenza vaccine uptake in GP patients: monthly data, 2022 to 2023 (outlook.com)</a></li> <li>• <a href="#">Seasonal influenza vaccine uptake in children of school age: monthly data, 2022 to 2023 (outlook.com)</a></li> <li>• <a href="#">Seasonal influenza and COVID-19 vaccine uptake in frontline healthcare workers: monthly data 2022 to 2023 - GOV.UK (outlook.com)</a></li> <li>• <a href="#">Herpes zoster (shingles) immunisation programme 2021 to 2022: evaluation reports - GOV.UK (outlook.com)</a></li> <li>• <a href="#">General Practice Quality and Outcomes Framework Achievement and Exceptions Reporting Statistics 2021/22. - GOV.UK (outlook.com)</a></li> <li>• <a href="#">General Practice Workforce, 30 September 2022 - GOV.UK (outlook.com)</a></li> <li>• <a href="#">GP in hours: weekly bulletins for 2022 (outlook.com)</a></li> <li>• <a href="#">GP out-of-hours syndromic surveillance: weekly bulletins for 2022 (outlook.com)</a></li> <li>• <a href="#">Appointments in General Practice, September 2022 (outlook.com)</a></li> <li>• <a href="#">Primary Care Network Workforce, 30 September 2022 - GOV.UK (outlook.com)</a></li> </ul>
UK GOV - Secondary Care	<ul style="list-style-type: none"> <li>• <a href="#">National ambulance syndromic surveillance: weekly bulletins 2022 (outlook.com)</a></li> <li>• <a href="#">Remote health advice: weekly bulletins for 2022 (outlook.com)</a></li> <li>• <a href="#">Emergency department: weekly bulletins for 2022 (outlook.com)</a></li> <li>• <a href="#">NHS Workforce Statistics, July 2022 - GOV.UK (outlook.com)</a></li> <li>• <a href="#">NHS Sickness Absence Rates, April 2022 to June 2022, Provisional Statistics (outlook.com)</a></li> <li>• <a href="#">Maternity Services Monthly Statistics, July 2022, experimental statistics - GOV.UK (outlook.com)</a></li> <li>• <a href="#">Diagnostic imaging dataset for June 2022 and Annual 2021/22 - GOV.UK (outlook.com)</a></li> <li>• <a href="#">Urgent and Emergency Care Waiting Time Statistics (July - September 2022) - GOV.UK (outlook.com)</a></li> </ul>

UK GOV Deaths / Suicide / Palliative Care	<ul style="list-style-type: none"> <li>• <a href="https://www.gov.uk/government/news/deaths-registered-weekly-in-england-and-wales-provisional-week-ending-30-september-2022">Deaths registered weekly in England and Wales, provisional: week ending 30 September 2022 (www.gov.uk)</a></li> <li>• <a href="https://www.gov.uk/government/news/weekly-all-cause-mortality-surveillance-2022-to-2023">Weekly all-cause mortality surveillance: 2022 to 2023 (www.gov.uk)</a></li> </ul>
UK GOV - LTC	
Surveillance / Syndromic Surveillance	<ul style="list-style-type: none"> <li>• <a href="https://www.gov.uk/government/news/syndromic-surveillance-systems-and-analyses">Syndromic surveillance: systems and analyses - GOV.UK (www.gov.uk)</a></li> </ul>
UK GOV Infectious Disease Monitoring / NOIDS	<ul style="list-style-type: none"> <li>• <a href="https://www.outlook.com/health/norovirus-rotavirus-surveillance-reports-2022-to-2023-season/">National norovirus and rotavirus surveillance reports: 2022 to 2023 season (outlook.com)</a></li> <li>• <a href="https://www.outlook.com/health/travel-associated-infections/">Travel-associated infections - GOV.UK (outlook.com)</a></li> <li>• <a href="https://www.outlook.com/health/notifiable-diseases-last-52-weeks/">Notifiable diseases: last 52 weeks (outlook.com)</a></li> <li>• <a href="https://www.outlook.com/health/notifiable-diseases-weekly-reports-for-2022/">Notifiable diseases: weekly reports for 2022 (outlook.com)</a></li> <li>• <a href="https://www.outlook.com/health/weekly-statutory-notification-of-infectious-diseases-noids-report/">Weekly Statutory Notification of Infectious Diseases (NOIDs) Report (outlook.com)</a></li> </ul>
UK GOV - Mental Health	
Addiction/Smoking	<ul style="list-style-type: none"> <li>• <a href="https://www.drinkcoach.co.uk/">Drink Coach</a></li> <li>• <a href="https://www.nhs.uk/healthcare-professionals/stop-smoking-interventions-and-services/">Stop smoking interventions and services</a></li> </ul>
Immunisation / Travel Health	
<ul style="list-style-type: none"> <li>• <a href="https://www.joint-committee-on-vaccination-and-immunisation.org/">Joint Committee on Vaccination and Immunisation</a></li> <li>• <a href="https://www.nhs.uk/immunisation-against-infectious-disease/">Immunisation against infectious disease</a></li> <li>• <a href="https://www.westmidlandsimmunisation.nhs.uk/">West Midlands Immunisation Service</a></li> <li>• <a href="https://www.nhs.uk/immunisation-against-infectious-disease/vaccination-of-individuals-with-uncertain-or-incomplete-immunisation-status/">Vaccination of individuals with uncertain or incomplete immunisation status</a></li> <li>• <a href="https://www.nhs.uk/immunisation-queries/">Immunisation Queries: Immunisation information for Health Care Services within the West Midlands area</a></li> <li>• <a href="https://www.nhs.uk/immunisation/">Immunisation</a></li> </ul>	
Flu	<ul style="list-style-type: none"> <li>• <a href="https://www.nhs.uk/flu-and-flu-vaccinations/">Flu and flu vaccinations</a></li> <li>• <a href="https://www.nhs.uk/flu-vaccinations/the-national-influenza-immunisation-programme-2021-to-2022/">The national influenza immunisation programme 2021 to 2022</a></li> <li>• <a href="https://www.nhs.uk/flu-vaccinations/flu-vaccines-for-the-2021-to-2022-season-poster/">Flu vaccines for the 2021 to 2022 season poster</a></li> <li>• <a href="https://www.nhs.uk/flu-vaccinations/appendix-c-flu-vaccinator-competency-assessment-tool/">Appendix C: Flu vaccinator competency assessment tool</a></li> <li>• <a href="https://www.nhs.uk/flu-vaccinations/healthcare-assistants-and-flu-vaccinations/">Healthcare assistants and flu vaccinations</a></li> </ul>

<i>Continuation of Immunisation / Travel Health</i>	
Covid Vaccine	<ul style="list-style-type: none"> <li>• <a href="#">Greenbook COVID-19 chapter 14a</a></li> <li>• <a href="#">COVID-19 Vaccine Moderna e-learning now available</a></li> <li>• <a href="#">GP COVID-19 vaccine dashboard</a></li> <li>• <a href="#">Updates made to the COVID-19 vaccination learning programme</a></li> </ul>
Children	
Adults	<ul style="list-style-type: none"> <li>• <a href="#">Immunisation patient group direction (PGD) templates</a></li> <li>• <a href="#">Shingles immunisation programme: introduction of Shingrix® letter</a></li> </ul>
Vaccine Update	<ul style="list-style-type: none"> <li>• <a href="#">Vaccine update: issue 331, August 2022 - GOV.UK (www.gov.uk)</a></li> <li>• <a href="#">Vaccine update: issue 329, May 2022 - GOV.UK (www.gov.uk)</a></li> <li>• <a href="#">Vaccine update: issue 328, May 2022, Shingrix® special edition - GOV.UK (www.gov.uk)</a></li> <li>• <a href="#">Vaccine update: issue 327, May 2022, SCID, TB and BCG special edition (www.gov.uk)</a></li> <li>• <a href="#">Vaccine update: issue 326, April 2022, HPV special edition - GOV.UK (www.gov.uk)</a></li> <li>• <a href="#">Vaccine update: issue 325, April 2022, flu special edition - GOV.UK (www.gov.uk)</a></li> </ul>
PGD	<ul style="list-style-type: none"> <li>• <a href="#">Hib/MenC: patient group direction (PGD) template - GOV.UK (www.gov.uk)</a></li> </ul>
Travel Health	<ul style="list-style-type: none"> <li>• <a href="#">Travel Health Pro</a></li> <li>• <a href="#">Fit for Travel</a></li> <li>• <a href="#">Travel Health</a></li> <li>• <a href="#">Jane Chiodini</a></li> <li>• <a href="#">Corona.Help</a></li> </ul>

Mental Health / Learning Disability / Disability	
Mental Health	<ul style="list-style-type: none"> <li>• <a href="#">Mental Health</a></li> <li>• <a href="#">Mental Health UK</a></li> <li>• <a href="#">Mind</a></li> <li>• <a href="#">Place2b</a></li> <li>• <a href="#">Rethink Mental Illness</a></li> <li>• <a href="#">Young Minds</a></li> <li>• <a href="#">Every Mind Matters</a></li> <li>• <a href="#">Calm</a></li> <li>• <a href="#">Headspace</a></li> <li>• <a href="#">Better Health - Every Mind Matters - Resources</a></li> <li>• <a href="#">ZSA Training</a></li> <li>• <a href="#">NHS &gt; Mental Health</a></li> <li>• <a href="#">Decrease in detentions under Mental Health Act from 2020-21 to 2021-22: statistical press release - NHS Digital</a></li> <li>• <a href="#">Centre for Mental Health A Working Partnership</a></li> </ul>
Learning Disability	<ul style="list-style-type: none"> <li>• <a href="#">Learning Disabilities</a></li> <li>• <a href="#">Learning Disability England</a></li> <li>• <a href="#">Mencap</a></li> <li>• <a href="#">Bild</a></li> <li>• <a href="#">Autism</a></li> <li>• <a href="#">Mythbuster: 'Autism rarely affects girls – she's probably just anxious' (cogora.com)</a></li> </ul>
Disability (Inc. hearing and visual)	<ul style="list-style-type: none"> <li>• <a href="#">Disability Rights UK</a></li> <li>• <a href="#">Disability Matters</a></li> <li>• <a href="#">RNID - National hearing loss charity</a></li> <li>• <a href="#">Spokzpeople</a></li> <li>• <a href="#">Sight Loss Data Tool   RNIB</a></li> <li>• <a href="#">Sound Magazine   Boots Hearingcare</a></li> <li>• <a href="#">Can Deaf and disabled people's organisations help shape health and care services in the UK?</a></li> </ul>

From Cradle to...

<p>Infant Health</p>	<ul style="list-style-type: none"> <li>• <a href="#">Tommys</a></li> <li>• <a href="#">First Steps Nutrition Trust</a></li> <li>• <a href="#">Bliss</a></li> <li>• <a href="#">ICON Toolkit</a></li> <li>• <a href="#">Sandwell - 7 Minute Briefing - ICON within Primary Care</a></li> <li>• <a href="#">Walsall - Sleep Awareness</a></li> <li>• <a href="#">Toilet Training</a></li> <li>• <a href="#">Understanding your child's behaviour</a></li> <li>• <a href="#">Understanding your child's emotions</a></li> </ul>
<p>Child Health</p>	<ul style="list-style-type: none"> <li>• <a href="#">Unicef</a></li> <li>• <a href="#">Health Professional Academy</a></li> <li>• <a href="#">Premature Babies</a></li> <li>• <a href="#">Child and Maternal Health</a></li> <li>• <a href="#">Women and Child First</a></li> <li>• <a href="#">Child Health Information Services</a></li> <li>• <a href="#">Place2b</a></li> <li>• <a href="#">Childhood eczema</a></li> <li>• <a href="#">Childhood asthma</a></li> <li>• <a href="#">Paediatrics for Primary Care (and anyone else) (gppaedstips.blogspot.com)</a></li> <li>• <a href="#">NHS England » National bundle of care for children and young people with asthma (cmail20.com)</a></li> <li>• <a href="#">Chickenpox Symptoms and Treatment   Health Visitor and Nurse CPD Course   Pharmacy Academy (healthprofessionalacademy.co.uk)</a></li> </ul>
<p>Adolescent Health</p>	<ul style="list-style-type: none"> <li>• <a href="#">Adolescent Health Programme</a></li> <li>• <a href="#">Society for Adolescent Health and Medicine</a></li> <li>• <a href="#">Young Minds</a></li> </ul>

<p>Mens Health</p>	<ul style="list-style-type: none"> <li>• <a href="#">Mens Health Forum</a></li> <li>• <a href="#">Mens Health Month</a></li> <li>• <a href="#">Mens health.org</a></li> <li>• <a href="#">Mens Health UK</a></li> <li>• <a href="#">Men and mental health</a></li> <li>• <a href="#">Men's Mental Health Awareness</a></li> <li>• <a href="#">Prostate Cancer UK</a></li> <li>• <a href="#">Orchid Fighting Male Cancer</a></li> <li>• <a href="#">Prostate Cancer UK Facebook Page</a></li> <li>• <a href="#">Movember</a></li> </ul>
<p>Women's Health</p>	<ul style="list-style-type: none"> <li>• <a href="#">Womens Health Concern</a></li> <li>• <a href="#">Well Being of Women</a></li> <li>• <a href="#">Coppa Feel</a></li> <li>• <a href="#">Menopause Matters</a></li> <li>• <a href="#">The Menopause Charity</a></li> <li>• <a href="#">Royal College of Obstetricians and Gynaecologists - Guidelines</a></li> <li>• <a href="#">Pelvic Partnership</a></li> <li>• <a href="#">CRUK - Womens Cancer</a></li> <li>• <a href="#">Breast Cancer Now</a></li> <li>• <a href="#">Foundation for Women's Cancer</a></li> <li>• <a href="#">Eve Appeal</a></li> <li>• <a href="#">Ovarian.Org</a></li> <li>• <a href="#">Jo's Trust</a></li> <li>• <a href="#">Well Spring</a></li> <li>• <a href="#">Know your Lemons</a></li> <li>• <a href="#">British Menopause Society - <u>www.thebms.org.uk</u></a></li> <li>• <a href="#">NHS - <u>www.nhs.uk/conditions/menopause</u></a></li> <li>• <a href="#">Henpicked - <u>henpicked.net</u></a></li> <li>• <a href="#">The Menopause Exchange - <u>www.menopause-exchange.co.uk</u></a></li> <li>• <a href="#">Women's Health Concerns - <u>www.womens-health-concern.org</u></a></li> <li>• <a href="#">Menopause Matters - <u>www.menopausematters.co.uk</u></a></li> <li>• <a href="#">The Daisy Network - <u>www.daisynetwork.org</u></a></li> <li>• <a href="#">Dr Louise Newson's Menopause Doctor - <u>www.menopausedoctor.co.uk</u></a></li> <li>• <a href="#">Manage My Menopause - <u>www.managemymenopause.co.uk/menopause-advice</u></a></li> <li>• <a href="#">Menopause Support - <u>menopausesupport.co.uk</u></a></li> <li>• <a href="#">Target Ovarian Cancer Pathfinder 2022</a></li> </ul>

The Older Population	<ul style="list-style-type: none"> <li>• <a href="#">BGS</a></li> <li>• <a href="#">Ageing Better</a></li> <li>• <a href="#">Delirium Champions - YouTube</a></li> </ul>
Carers / Social Care / Care Homes	<ul style="list-style-type: none"> <li>• <a href="#">The Care Provider Alliance</a></li> <li>• <a href="#">Skills for Care</a></li> <li>• <a href="#">The Care Workers' Charity</a></li> <li>• <a href="#">Supporting Adult Carers</a></li> <li>• <a href="#">The Care UK</a></li> <li>• <a href="#">See the resources (phe.gov.uk)</a></li> <li>• <a href="#">Save Your Employees Up to £3000 Each Year with Terryberry Benefits (ourmailsender4.com)</a></li> <li>• <a href="#">Latest key statistics on adult social care include council spending in 2021-22: statistical press release - NHS Digital</a></li> </ul>
Young Carers	
Complex Needs	
Family Planning & Sexual Health	
Family Planning	<ul style="list-style-type: none"> <li>• <a href="#">Faculty of Sexual and Reproductive Healthcare Education and Training</a></li> </ul>
Reproductive	<ul style="list-style-type: none"> <li>• <a href="#">Tommys</a></li> </ul>
Sexual Health / Sexual Abuse	<ul style="list-style-type: none"> <li>• <a href="#">Sexual and Reproductive Health Profiles</a></li> <li>• <a href="#">FSRH Education &amp; Training</a></li> <li>• <a href="#">Towards Zero - An action plan towards ending HIV transmission, AIDS and HIV-related deaths in England - 2022 to 2025 - GOV.UK (www.gov.uk)</a></li> </ul>
Maternity / Neonate health	

### Care of Patients with Long Term Conditions

LTC	<ul style="list-style-type: none"> <li>• <a href="#">Physical Activity for the Prevention and Management of Long-Term Conditions</a></li> <li>• <a href="#">Health A to Z</a></li> </ul>
Diabetes & Pre-Diabetes	<ul style="list-style-type: none"> <li>• <a href="#">Mumoactive</a></li> <li>• <a href="#">The mySugr App</a></li> <li>• <a href="#">PCDS Entry level module series - Foot Check</a></li> <li>• <a href="#">Type 2 diabetes in adults: management</a></li> <li>• <a href="#">The management of patients with CKD and Type 2 Diabetes (vimeo.com)</a></li> </ul>
Respiratory	<ul style="list-style-type: none"> <li>• <a href="#">Spirometry: step by step</a></li> <li>• <a href="#">ARTP</a></li> <li>• <a href="#">British Lung Foundation</a></li> <li>• <a href="#">The Primary Care Respiratory Society</a></li> <li>• <a href="#">Respiratory – Respimat® patient resources   Boehringer Ingelheim (boehringer-ingelheim.com)</a></li> <li>• <a href="#">Respiratory News &amp; Advice   (nursinginpractice.com)</a></li> <li>• <a href="#">Dudley pulmonary rehab - Template PI (dgft.nhs.uk)</a></li> <li>• <a href="#">EXACOS study</a></li> </ul>
COPD	<ul style="list-style-type: none"> <li>• <a href="#">Right Breathe</a></li> <li>• <a href="#">GOLD COPD 2022 strategy   Independent professional body guideline   Guidelines</a></li> <li>• <a href="#">Webinar: Are your COPD patients still living with anxiety around COVID? (astrazeneca.com)</a></li> </ul>
Asthma	<ul style="list-style-type: none"> <li>• <a href="#">Asthma UK</a></li> <li>• <a href="#">Asthma: diagnosis, monitoring and chronic asthma management</a></li> <li>• <a href="#">Global Initiative for Asthma</a></li> <li>• <a href="#">British guideline on the diagnosis and pharmacological management of asthma in children</a></li> <li>• <a href="#">Training courses for healthcare and non-healthcare professionals, including GPs and practice nurses, who care for children and young people with asthma (cmail20.com)</a></li> </ul>
Hypertension	<ul style="list-style-type: none"> <li>• <a href="#">British Heart Foundation</a></li> <li>• <a href="#">Blood Pressure UK</a></li> <li>• <a href="#">Hypertension in adults: diagnosis and management</a></li> <li>• <a href="#">Hypertension in adults: diagnosis and treatment</a></li> <li>• <a href="#">Hypertension: symptoms to look out for and treatment options (rcni.com)</a></li> </ul>



*Continuation of Long Term Conditions*

CVD/AF	<ul style="list-style-type: none"> <li>• <a href="#">QRISK®3-2018 risk calculator</a></li> <li>• <a href="#">Heart Rhythm Alliance</a></li> <li>• <a href="#">CVD risk assessment and management</a></li> <li>• <a href="#">NHS lipid management pathway   NHS guideline   Guidelines</a></li> <li>• <a href="#">NHS England » Direct oral anticoagulants (DOAC) infographic</a></li> <li>• <a href="#">Reflecting updated NICE guidance (cmail20.com)</a></li> <li>• <a href="#">create an opportunity to prevent thousands of potentially fatal stroke events (cmail20.com)</a></li> </ul>
Heart Failure	<ul style="list-style-type: none"> <li>• <a href="#">British Heart Foundation</a></li> <li>• <a href="#">British Society Guidelines</a></li> <li>• <a href="#">Pharmacological management of chronic heart failure (rcni.com)</a></li> </ul>
Cancer / Oncology	<ul style="list-style-type: none"> <li>• <a href="#">Surviving Thyroid Cancer</a></li> <li>• <a href="#">Help Us Help You - Lung Cancer Symptoms</a></li> <li>• <a href="#">Breast Cancer Now</a></li> <li>• <a href="#">Macmillian</a></li> <li>• <a href="#">Bowel Cancer UK</a></li> <li>• <a href="#">Brain Trust</a></li> <li>• <a href="#">CRUK</a></li> <li>• <a href="#">Action Cancer</a></li> <li>• <a href="#">Foundation for Women's Cancer</a></li> <li>• <a href="#">NHS England » Cancer</a></li> <li>• <a href="#">Pancreatic Cancer Awareness Month (PCAM) - Pancreatic Cancer UK</a></li> <li>• <a href="#">Target Ovarian Cancer Pathway 2022</a></li> <li>• <a href="#">Breast Cancer Report</a></li> </ul>
Chronic Kidney Disease	<ul style="list-style-type: none"> <li>• <a href="#">Kidney.Org</a></li> <li>• <a href="#">Kidney Quality Improvement Partnership</a></li> <li>• <a href="#">Infographic: The importance of monitoring both eGFR &amp; UACR in identifying and referring patients with chronic kidney disease</a></li> <li>• <a href="#">The management of patients with CKD and Type 2 Diabetes (vimeo.com)</a></li> </ul>
Liver Disease	<ul style="list-style-type: none"> <li>• <a href="#">British Liver Trust</a></li> <li>• <a href="#">Liver Research</a></li> <li>• <a href="#">BRITISH ASSOCIATION FOR THE STUDY OF THE LIVER</a></li> <li>• <a href="#">LIVERnORTH</a></li> <li>• <a href="#">LIVER DISEASE AND CIRRHOSIS</a></li> </ul>

*Continuation of Long Term Conditions*

Blood Disorders	<ul style="list-style-type: none"> <li>• <a href="#">Blood Cancer UK</a></li> <li>• <a href="#">UK Thalassaemia Society</a></li> <li>• <a href="#">The ITP Support Association</a></li> <li>• <a href="#">UK-ITP Paediatric ITP Registry</a></li> <li>• <a href="#">The Haemophilia Society</a></li> <li>• <a href="#">UK MDS Forum</a></li> <li>• <a href="#">Pernicious Anaemia Society</a></li> <li>• <a href="#">Haemochromatosis UK</a></li> </ul>
G.I	<ul style="list-style-type: none"> <li>• <a href="#">GIST Cancer UK</a></li> <li>• <a href="#">Pernicious Anaemia Society</a></li> <li>• <a href="#">The Cost of Opioid-Induced Constipation – Strategies for Change Webinar - Bowel Interest Group</a></li> </ul>
ENT	
G.U	
ME / CFS / Fibromyalgia	<ul style="list-style-type: none"> <li>• <a href="#">ME Association</a></li> <li>• <a href="#">ME Research</a></li> <li>• <a href="#">Action for M.E</a></li> <li>• <a href="#">Fibromyalgia Action UK</a></li> <li>• <a href="#">Fibromyalgia UK</a></li> <li>• <a href="#">Home - Fibromyalgia Awareness UK (fibroawarenessuk.org)</a></li> <li>• <a href="#">Fibromyalgia - Symptoms, diagnosis and treatment   BMJ Best Practice</a></li> <li>• <a href="#">Fibromyalgia - The Brain Charity</a></li> </ul>
Neurological Conditions	<ul style="list-style-type: none"> <li>• <a href="#">The Brain Tumour Charity</a></li> <li>• <a href="#">Narcolepsy.Org</a></li> <li>• <a href="#">ACNR</a></li> <li>• <a href="#">MS Society UK   Information, research and support   Multiple Sclerosis Society UK</a></li> <li>• <a href="#">Home   MS Trust</a></li> <li>• <a href="#">Epilepsy Society</a></li> <li>• <a href="#">First oral CGRP antagonist for migraine treatment and prevention   MIMS online</a></li> </ul>

*Continuation of Long Term Conditions*

<p>Musculoskeletal Conditions</p>	<ul style="list-style-type: none"> <li>• <a href="#">Rheumatology</a></li> <li>• <a href="#">National Axial Spondyloarthritis Society</a></li> <li>• <a href="#">Musculoskeletal health</a></li> <li>• <a href="#">Musculoskeletal health: 5 year prevention strategic framework</a></li> <li>• <a href="#">Faculty of Occupational Medicine</a></li> <li>• <a href="#">Guide to embedding your first contact physiotherapy service</a></li> </ul>
<p>Endocrine Disorders / Metabolic Disorders</p>	<ul style="list-style-type: none"> <li>• <a href="#">Society for Endocrinology</a></li> <li>• <a href="#">Turner Syndrome Support Society</a></li> <li>• <a href="#">Thyroid Eye Disease</a></li> <li>• <a href="#">British Thyroid Foundation</a></li> <li>• <a href="#">Thyroid UK</a></li> <li>• <a href="#">The Pituitary Foundation</a></li> <li>• <a href="#">Addisons Disease</a></li> <li>• <a href="#">Parathyroid UK</a></li> <li>• <a href="#">The Royal Osteoporosis Society</a></li> <li>• <a href="#">Metabolic Support UK</a></li> </ul>
<p>Frailty</p>	<ul style="list-style-type: none"> <li>• <a href="#">Recognising frailty</a></li> <li>• <a href="#">Identifying frailty</a></li> <li>• <a href="#">CLINICAL FRAILITY SCALE</a></li> </ul>
<p>Dementia / Alzheimers</p>	<ul style="list-style-type: none"> <li>• <a href="#">Dementia UK</a></li> <li>• <a href="#">Age UK - Understanding Dementia</a></li> <li>• <a href="#">Delirium Champions</a></li> <li>• <a href="#">Alzheimers Society</a></li> <li>• <a href="#">NHS England policy template 3 - dementia</a></li> <li>• <a href="#">This letter from Amanda Pritchard announced new measures that will support people with dementia (cmail20.com)</a></li> <li>• <a href="#">people with dementia occupy 25% of acute hospital beds (cmail20.com)</a></li> <li>• <a href="#">NHS England » 24/7 control centres among new plans to step up NHS winter preparations (cmail20.com)</a></li> <li>• <a href="#">appropriate guidance (cmail20.com)</a></li> </ul>

*Continuation of Long Term Conditions*

<p>Dermatology</p>	<ul style="list-style-type: none"> <li>• <a href="#">British Association of Dermatologists</a></li> <li>• <a href="#">Eczema</a></li> <li>• <a href="#">The British Skin Foundation</a></li> <li>• <a href="#">Acne vulgaris: management</a></li> <li>• <a href="#">The Primary Care Dermatology Society</a></li> <li>• <a href="#">Acne.org</a></li> <li>• <a href="#">Allergy UK</a></li> <li>• <a href="#">Urticaria</a></li> <li>• <a href="#">Hives</a></li> <li>• <a href="#">Sunburn</a></li> <li>• <a href="#">Causes of cancer and reducing your risk</a></li> <li>• <a href="#">What is Rosacea?</a></li> <li>• <a href="#">Rosecea</a></li> <li>• <a href="#">The Rosacea Forum</a></li> <li>• <a href="#">Herpes Viruses Association</a></li> <li>• <a href="#">Shingles</a></li> <li>• <a href="#">Fungal Skin Infection - Foot</a></li> <li>• <a href="#">The Psoriasis Association</a></li> <li>• <a href="#">National Psoriasis Foundation</a></li> <li>• <a href="#">Melanoma</a></li> <li>• <a href="#">Skin Health Information</a></li> <li>• <a href="#">British Association of Plastic Reconstructive and Aesthetic Surgeons - Procedure Guides</a></li> <li>• <a href="#">Warts and verrucae</a></li> <li>• <a href="#">MIMS Clinics</a></li> <li>• <a href="#">Pigmented skin changes - Registration (gotowebinar.com)</a></li> </ul>
<p>Allergy / Auto-immune / Genetic Conditions</p>	<ul style="list-style-type: none"> <li>• <a href="#">Allergy UK</a></li> <li>• <a href="#">British Society for Rheumatology</a></li> <li>• <a href="#">Addisons Disease</a></li> <li>• <a href="#">Hayfever treatments (mims.co.uk)</a></li> </ul>

<i>Continuation of Long Term Conditions</i>	
Obesity	<ul style="list-style-type: none"> <li>• <a href="#">Obesity UK</a></li> </ul>
Pain Management	<ul style="list-style-type: none"> <li>• <a href="#">Pain Concern</a></li> </ul>
Osteoporosis / Falls	
Genomics	<ul style="list-style-type: none"> <li>• <a href="#">HEE extends online genomics tool to advanced nurse practitioners in general practice   Nursing in Practice (cogora.com)</a></li> <li>• <a href="#">GeNotes: Genomic notes for clinicians   GEP   Health Education England   NHS (hee.nhs.uk)</a></li> <li>• <a href="#">HEE extends new educational resource to GPs   Health Education England</a></li> </ul>
Multi-Morbidity	<ul style="list-style-type: none"> <li>• <a href="#">Multimorbidity</a></li> <li>• <a href="#">Multimorbidity / multiple long-term conditions (MLTC)</a></li> </ul>
Minor Illness / First Contact Assessment / OSCE	<ul style="list-style-type: none"> <li>• <a href="#">Fact Sheets - Self Care Forum</a></li> <li>• <a href="#">OSCE Checklists 📄 (mlsend.com)</a></li> <li>• <a href="#">OSCE Flashcards 🩺 (mlsend.com)</a></li> <li>• <a href="#">600+ OSCE Stations ✨ (mlsend.com)</a></li> <li>• <a href="#">Anatomy Flashcards 🫁 (mlsend.com)</a></li> <li>• <a href="#">Health A to Z</a></li> <li>• <a href="#">Symptoms - Nursing in Practice Reference</a></li> <li>• <a href="#">Chickenpox Symptoms and Treatment   Health Visitor and Nurse CPD Course   Pharmacy Academy (healthprofessionalacademy.co.uk)</a></li> <li>• <a href="#">Viral haemorrhagic fever: ACDP algorithm and guidance on management of patients - GOV.UK (www.gov.uk)</a></li> </ul>
Other / Case Studies	
End of Life Care	
End of Life Care / Bereavement	<ul style="list-style-type: none"> <li>• <a href="#">ReSPECT for healthcare professionals</a></li> <li>• <a href="#">Hospice UK</a></li> </ul>

Flu / Covid-19 / Monkeypox	
Covid-19	
Flu	
Long Covid	<ul style="list-style-type: none"> <li>• <a href="#">Supporting your recovery after COVID-19</a></li> <li>• <a href="#">Long Covid Toolkit</a></li> <li>• <a href="#">Long term effects of COVID (Long COVID)</a></li> <li>• <a href="#">Post-COVID Syndrome (Long COVID)</a></li> <li>• <a href="#">COVID-19 Yorkshire Rehabilitation Screening Tool</a></li> <li>• <a href="#">FOM Guidance</a></li> </ul>
Monkeypox	
News & Views	
Digital News / Remote Consultations	<ul style="list-style-type: none"> <li>• <a href="#">Digital Health News Webinars</a></li> <li>• <a href="#">Digital Health News</a></li> <li>• <a href="#">NHS Digital</a></li> <li>• <a href="#">DigiHealthWell</a></li> <li>• <a href="#">Public Sector Events, Conferences and Training - Inside Government</a></li> <li>• <a href="#">Digital Transformation</a></li> <li>• <a href="#">Digital Health Networks Newsletter: 31 October 2022 (mailchi.mp)</a></li> <li>• <a href="#">Your daily news updates from Digital Health (campaign-archive.com)</a></li> <li>• <a href="#">Understanding healthcare workers' confidence in AI (hee.nhs.uk)</a></li> </ul>
Pulse / GP Online / HSJ / NB Medical	<ul style="list-style-type: none"> <li>• <a href="#">GP Online</a></li> <li>• <a href="#">HSJ</a></li> <li>• <a href="#">Pulse Today</a></li> </ul>
PSNC News / Pharmacy	<ul style="list-style-type: none"> <li>• <a href="#">National Pharmacy Association</a></li> <li>• <a href="#">Royal Pharmaceutical Society</a></li> <li>• <a href="#">Medicines Learning Portal</a></li> <li>• <a href="#">Specialist Pharmacy Service</a></li> <li>• <a href="#">October 2022 Price Concessions 5th Update (mailchi.mp)</a></li> <li>• <a href="#">PSNC Newsletter: 31st October (mailchi.mp)</a></li> </ul>

*Continuation of News & Views*

Primary Care Update / PCC / PPP	<ul style="list-style-type: none"> <li>• <a href="#">Public Policy Projects News</a></li> <li>• <a href="#">Primary Care Bulletin</a></li> </ul>
Proactive Care	
Health Care Leaders Newsletters	
Kings Fund	<ul style="list-style-type: none"> <li>• <a href="#">The Kings Fund</a></li> </ul>
World Health Organisation	<ul style="list-style-type: none"> <li>• <a href="#">WHO</a></li> <li>• <a href="#">OpenWHO</a></li> <li>• <a href="#">OpenWHO Monthly Newsletter   OpenWHO</a></li> </ul>
IHCT / CCG / STP / Healthier Futures	<ul style="list-style-type: none"> <li>• <a href="#">Black Country &amp; West Birmingham CCG</a></li> <li>• <a href="#">Dudley Integrated Health and Care</a></li> <li>• <a href="#">Home :: Black Country Healthcare NHS Foundation Trust</a></li> <li>• <a href="#">v Issue 16 - Black Country Primary Care Brief (sharepoint.com)</a></li> <li>• <a href="#">Issue 15 - Black Country Primary Care Brief (sharepoint.com)</a></li> <li>• <a href="#">Issue 14 - Black Country Primary Care Brief (sharepoint.com)</a></li> <li>• <a href="#">Issue 13 - Black Country Primary Care Brief (sharepoint.com)</a></li> <li>• <a href="#">Issue 12 - Black Country Primary Care Brief (sharepoint.com)</a></li> <li>• <a href="#">Issue 11 - Black Country Primary Care Brief (sharepoint.com)</a></li> <li>• <a href="#">Issue 10 - Black Country Primary Care Brief (sharepoint.com)</a></li> <li>• <a href="#">Issue 09 - Black Country primary Care Brief (sharepoint.com)</a></li> <li>• <a href="#">Updated: UKHSA - Urgent public health message regarding Ebola virus outbreak in Uganda and IPC guidance (sharepoint.com)</a></li> <li>• <a href="#">Message from Mark Axcell &amp; Staff News (20 October 2022) (sharepoint.com)</a></li> <li>• <a href="#">Staff News</a></li> </ul>
NHSI / NHSE	
University / Student Nurses	
Nurse Guidelines	
The Health Care Leaders Update	<ul style="list-style-type: none"> <li>• <a href="#">Health Care Leader News</a></li> </ul>

*Continuation of News & Views*

Medisa / Univadis / Geeky Medics / GP Notebook / Medscape	<ul style="list-style-type: none"> <li>• <a href="#">Medisa</a></li> <li>• <a href="#">Geeky Medics</a></li> <li>• <a href="#">Medscape Nurses</a></li> <li>• <a href="#">GP Notebook</a></li> <li>• <a href="#">Updates in oncology from GPnotebook (mailchi.mp)</a></li> </ul>
The Health Foundation	<ul style="list-style-type: none"> <li>• <a href="#">The Health Foundation</a></li> <li>• <a href="#">Newsletter: Upheaval at the top – what does it mean for health and care? (healthfdn.org.uk)</a></li> </ul>
Practice Index	
Innovation Agency	<ul style="list-style-type: none"> <li>• <a href="#">Innovation Agency Exchange</a></li> <li>• <a href="#">November 2022 newsletter (mailchi.mp)</a></li> </ul>
RCN	<ul style="list-style-type: none"> <li>• <a href="#">RCN</a></li> <li>• <a href="#">‘Mental health care must be culturally sensitive’   RCN Magazines   Royal College of Nursing</a></li> </ul>
Nursing in Practice / Nursing Standard / Independent Nurse	<ul style="list-style-type: none"> <li>• <a href="#">Nursing Times</a></li> <li>• <a href="#">Practice Nursing - Explore our brand new website</a></li> <li>• <a href="#">Journal of General Practice Nursing</a></li> <li>• <a href="#">Nursing Bulletin</a></li> <li>• <a href="#">Nursing Clinical</a></li> <li>• <a href="#">JCN Bulletin</a></li> <li>• <a href="#">Independent Nurse : October 2022 (mydigitalpublication.co.uk)</a></li> <li>• <a href="#">New CPD modules focused on urology and continence (mah-communications.co.uk)</a></li> <li>• <a href="#">Cholesterol: how to measure and how to treat (mah-communications.co.uk)</a></li> </ul>
QNI	<ul style="list-style-type: none"> <li>• <a href="#">QNI</a></li> <li>• <a href="#">Talk To Us @ – The Queen's Nursing Institute (qni.org.uk)</a></li> <li>• <a href="#">Homeless and Inclusion Health Nurses – Practitioners Addressing Inequalities in Health – The Queen's Nursing Institute (qni.org.uk)</a></li> <li>• <a href="#">Queen's Nurse Update October 2022 (mailchi.mp)</a></li> </ul>
NMC	<ul style="list-style-type: none"> <li>• <a href="#">NMC</a></li> <li>• <a href="#">NMC may consider viability of protecting ANP title, says Andrea Sutcliffe (cogora.com)</a></li> </ul>
CMO / CNO	
Nice	<ul style="list-style-type: none"> <li>• <a href="#">NICE</a></li> <li>• <a href="#">NICE and health inequalities   What we do   About   NICE</a></li> <li>• <a href="#">NICE News for Health and Social Care   October 2022 (mailchi.mp)</a></li> </ul>

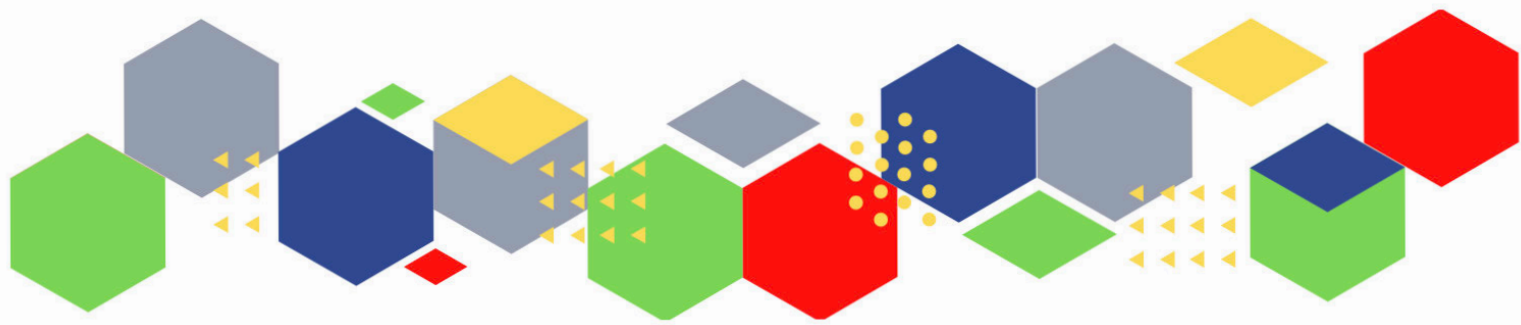


RCGP / BMA / The Lancet	<ul style="list-style-type: none"> <li>• <a href="#">The Lancet</a></li> <li>• <a href="#">British Medical Journal</a></li> <li>• <a href="#">Royal College of General Practitioners</a></li> </ul>
Midlands Academic Health Science Network	<ul style="list-style-type: none"> <li>• <a href="#">WMAHSN Network</a></li> </ul>
Healthwatch	<ul style="list-style-type: none"> <li>• <a href="#">Healthwatch</a></li> </ul>
Other	<ul style="list-style-type: none"> <li>• <a href="#">Patients Association</a></li> <li>• <a href="#">Civial Service World Newsletter</a></li> <li>• <a href="#">Why do diagnostics matter?   The King's Fund (kingsfund.org.uk)</a></li> </ul>
<b>Free Training / Webinars / Meetings / CPD</b>	
Development / Information and Knowledge	<ul style="list-style-type: none"> <li>• <a href="#">Red Whale Training</a></li> <li>• <a href="#">Issues &amp; Answers</a></li> <li>• <a href="#">Issues &amp; Answers - Long Covid Broadcasts</a></li> <li>• <a href="#">Physical Health Care For Severe Mental Illness   Maudsley Learning</a></li> <li>• <a href="#">Health is wealth? REAL Challenge annual lecture - 9 November 2022 (healthfdn.org.uk)</a></li> <li>• <a href="#">Lymphoedema Conference - Registration now open (mahealthcarevents.co.uk)</a></li> <li>• <a href="#">1 and 29 November, 12.30pm – 2pm. Safe, Reliable Processes I and II</a></li> <li>• <a href="#">4 November, 1pm – 2pm. GPN National Update: monthly webinar</a></li> <li>• <a href="#">8 November, 12pm - 1.15pm. Community Nursing: getting started with Population Health Management</a></li> <li>• <a href="#">8 November, 12.30pm - 1.30pm. Moving forward in paediatric critical care</a></li> <li>• <a href="#">9 November, 1pm – 2.30pm. Supporting Link Worker Well-being</a></li> <li>• <a href="#">9 November, 9am – 5pm. Primary care conference 2022</a></li> <li>• <a href="#">10 November, 11am – 12pm. RightCare Respiratory webinar</a></li> <li>• <a href="#">10 November, 12.30pm – 1.30pm. Conversation Session for GPs on the use of the Dementia toolkit</a></li> <li>• <a href="#">16 November, 10.30am – 12pm. Supporting our NHS people to reach out and help create a civil and respectful work culture</a></li> <li>• <a href="#">16 November, 2pm – 3pm. Wellbeing Wednesday: Winter Wellness</a></li> <li>• <a href="#">Watch our series of General Practice webinars</a></li> <li>• <a href="#">Watch our series of Primary Care Network webinars</a></li> <li>• <a href="#">Starting the conversation about hypoglycaemia in type 2 diabetes: Insights from a patient and primary care perspective - DiabetesontheNet</a></li> </ul>
Free to RCN	<ul style="list-style-type: none"> <li>• <a href="#">RCNi events   RCNi</a></li> <li>• <a href="#">RCN Shropshire AGM and learning event   Event   Royal College of Nursing</a></li> <li>• <a href="#">RCN Birmingham East, North and Solihull AGM and learning event   Event   Royal College of Nursing</a></li> </ul>

MIMMs Learning	
Eventbrite	<ul style="list-style-type: none"> <li>• <a href="#">Impact of GIRFT in the Male LUTS treatment Tickets, Thu 24 Nov 2022 at 09:00   Eventbrite</a></li> <li>• <a href="#">Pressure Ulcers and Management - Wounds on Thursday - Webinar series Tickets, Multiple Dates   Eventbrite</a></li> </ul>
e-Learning for Health	
Podcasts	<ul style="list-style-type: none"> <li>• <a href="#">The Nursing Handover Podcast</a></li> <li>• <a href="#">Nursing Standard Podcasts</a></li> <li>• <a href="#">Nursing Matters</a></li> <li>• <a href="#">Welcome to the BJN Podcast</a></li> <li>• <a href="#">Cygnet Health Care Podcast</a></li> <li>• <a href="#">EBN podcast</a></li> <li>• <a href="#">This Is Nursing</a></li> <li>• <a href="#">Teach me, I'm a Nurse</a></li> <li>• <a href="#">Past Caring</a></li> <li>• <a href="#">RCGP eLearning podcast</a></li> <li>• <a href="#">The BMJ Podcast</a></li> <li>• <a href="#">Primary Care Network podcasts</a></li> <li>• <a href="#">The Professional Support Unit's Pandemic Podcast</a></li> <li>• <a href="#">The Next GenCast</a></li> </ul>
YouTube	<ul style="list-style-type: none"> <li>• <a href="#">NHS England</a></li> <li>• <a href="#">Black Country Healthcare - YouTube</a></li> </ul>
Future Proof Health Training	<ul style="list-style-type: none"> <li>• <a href="#">Training</a></li> </ul>

*Continuation of Free Training / Webinars / Meetings / CPD*

Blogs/Vlogs	<ul style="list-style-type: none"> <li>• <a href="https://www.kingsfund.org.uk/poor-nhs-buildings-mean-poor-nhs-care">Poor NHS buildings mean poor NHS care   The King's Fund (kingsfund.org.uk)</a></li> <li>• <a href="https://www.kingsfund.org.uk/the-office-for-health-improvement-and-disparities-one-year-on">The Office for Health Improvement and Disparities: one year on   The King's Fund (kingsfund.org.uk)</a></li> <li>• <a href="https://www.kingsfund.org.uk/a-is-for-ambulances-4-ways-to-support-paramedics-this-winter">‘A’ is for ambulances: 4 ways to support paramedics this winter   The King's Fund (kingsfund.org.uk)</a></li> <li>• <a href="https://www.outlook.com/read-the-blog">Read the blog (outlook.com)</a></li> <li>• <a href="https://www.kingsfundmail.org.uk/read-the-blog">Read the blog (kingsfundmail.org.uk)</a></li> </ul>
BCWB Training Hub	<ul style="list-style-type: none"> <li>• <a href="https://blackcountryics.org.uk/upcoming-events">Upcoming events (blackcountryics.org.uk)</a></li> <li>• <a href="https://campaign-archive.com/latest-news-from-the-black-country-training-hub">Latest news from the Black Country Training Hub (campaign-archive.com)</a></li> </ul>
Evidence based care	
Area Bulletins	
Research	<ul style="list-style-type: none"> <li>• <a href="https://www.sciencedaily.com">Science Daily</a></li> <li>• <a href="#">Multimorbidity / multiple long-term conditions (MLTC)</a></li> <li>• <a href="https://www.nhs.uk/research/national-institute-for-health-and-care-research">National Institute for Health and Care Research</a></li> <li>• <a href="https://govdelivery.com/hra-latest-october-2022-making-it-easier-to-do-research-outside-of-traditional-nhs-settings-another-partnership-pledges-to-improve-public-involvement-join-our-confidentiality-advisory-group-or-a-research-ethics-committee-and-more...">HRA Latest October 2022: making it easier to do research outside of traditional NHS settings; another partnership pledges to improve public involvement; join our Confidentiality Advisory Group or a Research Ethics Committee and more... (govdelivery.com)</a></li> </ul>
Freebies	<ul style="list-style-type: none"> <li>• <a href="#">Blue Light Card</a></li> </ul>
Campagne Links	<ul style="list-style-type: none"> <li>• <a href="https://www.campaignresourcecentre.com/nhs-general-practice-team">NHS General Practice Team   Campaign Resource Centre (cmail20.com)</a></li> <li>• <a href="https://www.phe.gov.uk/nhs-staff-respect">NHS Staff Respect   Campaign Resource Centre (phe.gov.uk)</a></li> </ul>
Other	



Thank you for reading Future Proof Health's weekly news!

If you missed past issues, please click [here](#) to view them

More information can be found on our website, [here](#)

Don't forget to like us on [Facebook](#) & Follow us on [Twitter](#)

