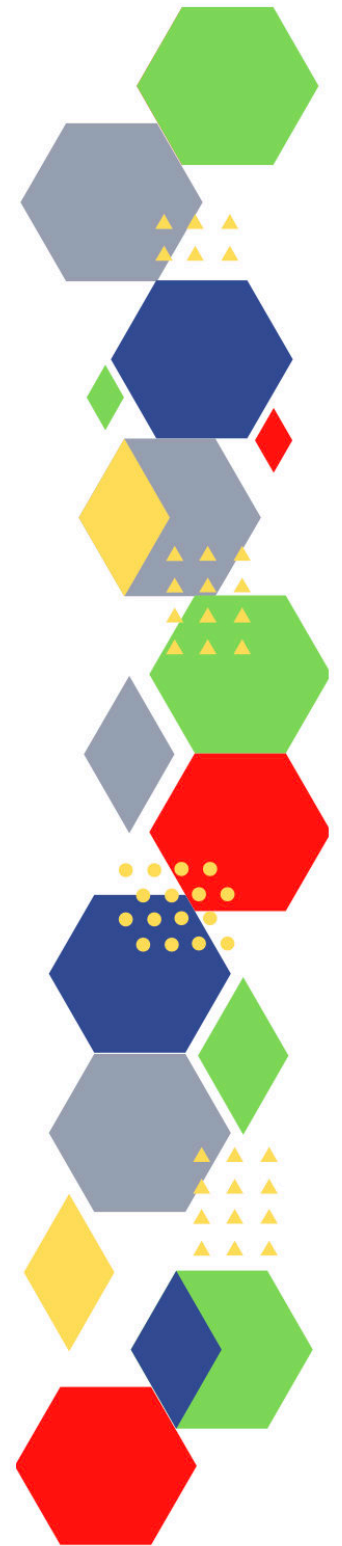




Future Proof Health Presents

Weekly News

16th June 2022



Communication	
Communication with Patients	
Communication within Teams	
Consent	<ul style="list-style-type: none"> • Gillick competency and Fraser guidelines • CONSENT POLICY • ReSPECT for healthcare professionals
People and Personal Development	
Personal / People Development / Leadership	<ul style="list-style-type: none"> • Accountability and delegation in practice • Report template (mcusercontent.com)
NHS Employers / HR / NHS Pension	<ul style="list-style-type: none"> • NHS Employers • Pensions Online • Experiences of Racial Discrimination and Harassment in London Primary Care
Health, Safety & Security	
	<ul style="list-style-type: none"> • NPSA • Control of Substances Hazardous to Health (COSHH) • Weekly Digest Newsletter: 8 June 2022 (govdelivery.com) • NHS England » NHS violence prevention and reduction standard: guidance notes • HSE Stress eBulletin: June 2022
Gov UK - NHS	
CQC	<ul style="list-style-type: none"> • GP mythbusters • Examples of outstanding practice for GPs • News from the Care Quality Commission: May 2022 (govdelivery.com) • CQC update for primary medical and dental services (govdelivery.com)
MIMS	<ul style="list-style-type: none"> • Prescribing Update
Antibiotic steward-ship / Anti-microbial resistance	
Drug / Device Alerts (MHRA)	
Emergency Situations	<ul style="list-style-type: none"> • The updated National Early Warning Score and its use with suspected Sepsis • Resuscitation Council UK

Vaccines / Medications / Prescribing	<ul style="list-style-type: none"> • Protocol for ordering, storing and handling vaccines • A Competency Framework for all Prescribers • Non-medical prescribing • The Human Medicines Regulations 2012 • RCN - Non-medical prescribers • Royal Pharmaceutical Society • Standards for prescribing • Clinical Negligence Scheme for General Practice
Infection Control / Infection Statics	<ul style="list-style-type: none"> • A rapid review of aerosol generating procedures (AGPs)
Safe Guarding	<ul style="list-style-type: none"> • Female genital mutilation (FGM) • PREVENT • Child protection system in the UK • Safeguarding Adults • Safeguarding children: detailed information • Wolverhampton WeCAN Toolkit Relaunch - 21st June 2022 (govdelivery.com) • Webinar for multi-agency safeguarding partners Tickets, Wed 29 Jun 2022 at 14:00 Eventbrite • Female Genital Mutilation, Jan 2022 - March 2022 - GOV.UK (www.gov.uk)
Practice Policies	<ul style="list-style-type: none"> • Home - NHS Resolution
Audit	
Information Governance / Record Keeping	<ul style="list-style-type: none"> • Guide to Data Protection • Supporting general practice – Medical record keeping • National data sharing GP Connect and Summary Care Record Additional Information - NHS Digital
Quality & Service Improvement	
Quality, Service & Improvement	<ul style="list-style-type: none"> • The PRSB • General Practice Assessment Questionnaire (GPAQ) • Healthwatch • NHS Five Year Forward View • General Practice Forward View • NMC • Dr Jon Griffiths • NHS Confed

Roles in General Practice	<ul style="list-style-type: none"> • Standards for nursing associates • GP mythbuster 57: Health Care Assistants in General Practice
Revalidation	
Personal Practice & Development	
Practice Management	<ul style="list-style-type: none"> • Institute of General Practice Management • Practice Index
Employment	
NHS Self Care & Resilience	<ul style="list-style-type: none"> • Samaritans • Mental Health at work • Calm • Supporting our NHS people • The Hub :: Black Country Healthcare NHS Foundation Trust • NHS England » Looking after you too
Practice Transformation / Innovation Agency	
Future of NHS / General Practice / NHS Recovery	<ul style="list-style-type: none"> • How does the NHS in England work and how is it changing? The King's Fund (kingsfund.org.uk) • Health and social care review: leadership for a collaborative and inclusive future - GOV.UK (www.gov.uk)
ICS / PCN	<ul style="list-style-type: none"> • NHS England » The constitutions of Integrated Care Boards • Digital Health Intelligence ICS Snapshot Report • NHS England » National Guidance on Quality Risk Response and Escalation in Integrated Care Systems • Roadmap for integrating specialised services within Integrated Care Systems

QOF / PHOF / DES / LES / NHS Contract / CQRS / CQUIN	
Leadership	<ul style="list-style-type: none"> • Leadership Academy
Personalised Care	
Personalised Care / Self Care / Social Prescribing / Health Coaching	<ul style="list-style-type: none"> • Self Care forum • Personalised Care Institute • Personalised care • Social Prescribing Academy • PCC Events • Link workers for population health The King's Fund (kingsfund.org.uk)
Group consultation	
Working Differently	<ul style="list-style-type: none"> • More healthcare professionals given powers to certify fit notes - GOV.UK (www.gov.uk) • New data strategy to drive innovation and improve efficiency - GOV.UK (www.gov.uk)
Shared Decision Making	
Equality & Diversity	
Equality & Diversity	<ul style="list-style-type: none"> • Public Health Profiles
Inclusion Health	<ul style="list-style-type: none"> • Health Creation Academic Network
Poverty / Homelessness	<ul style="list-style-type: none"> • Crisis • This is Poverty • Time for action on poverty The King's Fund (kingsfund.org.uk)
Population Health / Health Communities	
Thrive Into Work	<ul style="list-style-type: none"> • Thrive into Work • Thrive into Work Referral form

<i>Continuation of Equality & Diversity</i>	
Health Inequalities	
Trans / Non-binary Health / LGBTQ+	<ul style="list-style-type: none"> • LGBT Foundation • NHS population screening: information for trans and non-binary people • Cervical screening for trans men and/or non-binary people
Migrant / Refugee Health	<ul style="list-style-type: none"> • THE REFUGEE & MIGRANT CENTRE
Traveller / Gypsy / Romany Health	
Veterans Health	<ul style="list-style-type: none"> • The first call for help takes courage
Management of Emergency Situations	
Management of Emergency Situations	<ul style="list-style-type: none"> • The updated National Early Warning Score and its use with suspected Sepsis
111	
First Contact	<ul style="list-style-type: none"> • Supporting general practice – Common pitfalls • Paediatrics for Primary Care (and anyone else) (gppaedstips.blogspot.com)
Red Flags	
Sepsis	<ul style="list-style-type: none"> • Sepsis: recognition, diagnosis and early management • Sepsis guidance implementation advice for adults • Sepsis in Children • Sepsis Trust • RCGP: Sepsis • quick SEPSIS RELATED ORGAN FAILURE ASSESSMENT

<i>Continuation of Emergency Situations</i>	
Therapeutic Monitoring	
OSCE	<ul style="list-style-type: none"> • Geeky Medics • Abdominal Examination - Demonstration - YouTube • Cardiovascular Examination - Demonstration - YouTube • Respiratory Examination - Demonstration - YouTube • Physical Diagnosis Skills - University of Washington School of Medicine • 500+ OSCE Stations, new YouTube content & more (mailerlite.com)
Role Specific	
Cervical Cytology	<ul style="list-style-type: none"> • Guide to the interim assessment • British Association for Cytopathology • Lab Tests Online • Female Genital Mutilation, Jan 2022 - March 2022 - GOV.UK (www.gov.uk) • Fewer cervical screenings safe for women who test negative for HPV - Nursing in Practice
Ear Care	<ul style="list-style-type: none"> • Ear Care Centre • RNID
Wound Management	<ul style="list-style-type: none"> • Microworld • Tissue Viability Society • The BLS • Wounds on Thursdays • Wounds Week: Access 10 CPD-certified webinars (mah-communications.co.uk) • Wound Expo 2022 - Registration now open (mahealthcareevents.co.uk)
Minor Surgery	
Obtaining Samples / Results	<ul style="list-style-type: none"> • Lab Tests Online

Health Promotion / Health Screening	
Health Promotion / Population Health	<ul style="list-style-type: none"> • Better Health • EXi App • Apps - Lets Get (lets-get.com) • HPR volume 16 issue 5: news (13 June 2022) - GOV.UK (www.gov.uk) • Zoonoses (England and Wales): January to March 2022 • Laboratory-confirmed MMR (England): January to March 2022 • Laboratory-confirmed invasive meningococcal disease (England): January to March 2022 • Acquired carbapenemase-producing Gram-negative bacteria in England: October 2020 to March 2022 • Tetanus in England: 2021 • Diphtheria in England: 2021 • Weekly national influenza and COVID-19 surveillance report: data to week 22 (9 June) • National norovirus and rotavirus bulletin week 23: data to week 21 (2
Health Screening	<ul style="list-style-type: none"> • PHE Screening
PHE / OHID / UKHSA	<ul style="list-style-type: none"> • Knowledge & Library Services • Campaign Resources • Public Health Profiles • Health Publications • Health Profile for England 2021 • English indices of deprivation 2019
NHS Health Check	<ul style="list-style-type: none"> • NHS Health Check

Continuation of Health Promotion / Health Screening

<p>NOIDS / PHE Surveillance / Syndromic Surveillance</p>	<ul style="list-style-type: none"> • Notifications of infectious diseases (NOIDs) • Notifications of infectious diseases (NOIDs) - GOV.UK (www.gov.uk) • Notifiable diseases: causative agents reports for 2022 - GOV.UK (www.gov.uk) • Notifiable diseases: weekly reports for 2022 - GOV.UK (www.gov.uk) • Notifiable diseases: last 52 weeks - GOV.UK (www.gov.uk) • National norovirus and rotavirus bulletins 2021 to 2022: management information - GOV.UK (www.gov.uk) • Common animal-associated infections: 2022 - GOV.UK (www.gov.uk) • Remote health advice: weekly bulletins for 2022 - GOV.UK (www.gov.uk) • GP in hours: weekly bulletins for 2022 - GOV.UK (www.gov.uk) • Syndromic surveillance: weekly summaries for 2022 - GOV.UK (www.gov.uk) • GP out-of-hours syndromic surveillance: weekly bulletins for 2022 - GOV.UK (www.gov.uk)
<p>Addiction/Smoking</p>	<ul style="list-style-type: none"> • Drink Coach • The Khan review: making smoking obsolete - GOV.UK (www.gov.uk) • Independent review published to help meet 2030 smokefree target - GOV.UK (www.gov.uk)

Immunisation / Travel Health

- [Vaccinations and infections](#)
- [Joint Committee on Vaccination and Immunisation](#)
- [Immunisation against infectious disease](#)
- [West Midlands Immunisation Service](#)
- [Immunisation information for Health Care Services within the West Midlands area](#)
- [Vaccination of individuals with uncertain or incomplete immunisation status](#)
- [WHO vaccine-preventable diseases: monitoring system. 2020 global summary](#)
- [The Foundations of Immunization: What, Who, When and Why?](#)
- [Winter Vaccination - Prime phase: Social Media content calendar and assets - 2021](#)
- [Measles outbreak training](#)
- [Vaccine Safety Basics](#)
- [Dr Nikki Kanani: values, vaccines and a vision for general practice | The King's Fund \(kingsfund.org.uk\)](#)

Flu

- [Flu and flu vaccinations](#)
- [The national influenza immunisation programme 2021 to 2022](#)
- [Flu vaccines for the 2021 to 2022 season poster](#)
- [Appendix C: Flu vaccinator competency assessment tool](#)
- [Healthcare assistants and flu vaccinations](#)
- [Flu Campaign Resources 2021/22](#)
- [National flu and COVID-19 surveillance reports published](#)
- [National flu immunisation programme plan 2022 to 2023 - GOV.UK \(www.gov.uk\)](#)
- [UKHSA flu immunisation 2022–2023 guideline | PHE/DH/DWP guideline | Guidelines](#)

<i>Continuation of Immunisation / Travel Health</i>	
Covid Vaccine	<ul style="list-style-type: none"> • Greenbook COVID-19 chapter 14a • Updates made to the COVID-19 vaccination elearning programme • HEE e-LfH COVID-19 vaccination programme launches hit 2 million • COVID-19 Vaccine Moderna e-learning now available • GP COVID-19 vaccine dashboard • Coronavirus (COVID-19) vaccines adverse reactions • Coronavirus and vaccination rates in people aged 18 years and over by socio-demographic characteristic and region, England: 10 June 2022 - GOV.UK (www.gov.uk)
Children	
Adults	<ul style="list-style-type: none"> • Immunisation patient group direction (PGD) templates • Shingles immunisation programme: introduction of Shingrix® letter
Vaccine Update	<ul style="list-style-type: none"> • Vaccine update: Issue 325, April 2022 (publishing.service.gov.uk) • Vaccine update: issue 328, May 2022, Shingrix® special edition - GOV.UK (www.gov.uk) • Vaccine update: issue 330, June 2022, COVID-19 spring special edition - GOV.UK (www.gov.uk) • Vaccine update: issue 329, May 2022 - GOV.UK (www.gov.uk) • Vaccine update: issue 326, April 2022, HPV special edition - GOV.UK (www.gov.uk) • Vaccine update: issue 327, May 2022, SCID, TB and BCG special edition - GOV.UK (www.gov.uk)
PGD	
Travel Health	<ul style="list-style-type: none"> • Travel Health Pro • Fit for Travel • Travel Health • Jane Chiodini • Corona.Help

Mental Health / Learning Disability / Disability

<p>Mental Health</p>	<ul style="list-style-type: none"> • Mental Health • Mental Health UK • Mind • Place2b • Rethink Mental Illness • Young Minds • Every Mind Matters • Calm • Headspace • We Can Talk • Get Your Mind Plan • Feeling low? • Better Health - Every Mind Matters - Resources • ZSA Training • Psychiatry - Medscape • Healthy foundations: integrating housing as part of the mental health pathway NHS Confederation • NHS England » GP surgeries to provide specialist mental health support • New data strategy to drive innovation and improve efficiency - GOV.UK (www.gov.uk) • Tackling mental health disparities
<p>Learning Disability</p>	<ul style="list-style-type: none"> • Learning Disabilities • Learning Disability England • Mencap • Bild • Autism
<p>Disability (Inc. hearing and visual)</p>	<ul style="list-style-type: none"> • Disability Rights UK • Disability Matters • RNID - National hearing loss charity

From Cradle to...

<p>Infant Health</p>	<ul style="list-style-type: none"> • Tommys • First Steps Nutrition Trust • Bliss • NHS App - Baby Buddy • NHS App - Peanut • ICON Toolkit • Infant formulae MIMS online • Parent-Infant Foundation (parentinfantfoundation.org.uk) • Recognising cow's milk allergy in primary care • When to use EHF in babies with suspected CMA
<p>Child Health</p>	<ul style="list-style-type: none"> • Unicef • Health Professional Academy • Premature Babies • Child and Maternal Health • Women and Child First • Child Health Information Services • Place2b • Childhood eczema • Childhood asthma • Paediatrics for Primary Care (and anyone else) (gppaedstips.blogspot.com) • e-Bug England Home • Long-COVID in children: how to spot the signs and offer support (rcni.com) • Paediatric focus from GPn (contains promotional information from SMA Nutrition: Reducing crying time in infants with colic) (mailchi.mp)
<p>Adolescent Health</p>	<ul style="list-style-type: none"> • Adolescent Health Programme • Society for Adolescent Health and Medicine • Young Minds • Save a life - MenACWY and signs/symptoms uni/FE/student accommodation sticker - Health Publications

<p>Mens Health</p>	<ul style="list-style-type: none">• Mens Health Forum• Mens Health Month• Mens health.org• Mens Health UK• Men and mental health• Men's Mental Health Awareness• Prostate Cancer UK• Orchid Fighting Male Cancer• Prostate Cancer UK Facebook Page• Men's Voices Event• Movember
<p>Women's Health</p>	<ul style="list-style-type: none">• Womens Health Concern• Well Being of Women• Coppa Feel• Menopause Matters• The Menopause Charity• Royal College of Obstetricians and Gynaecologists - Guidelines• Pelvic Partnership• CRUK - Womens Cancer• Breast Cancer Now• Foundation for Women's Cancer• Eve Appeal• Ovarian.Org• Jo's Trust• Well Spring• Female Genital Mutilation, Jan 2022 - March 2022 - GOV.UK (www.gov.uk)

The Older Population	<ul style="list-style-type: none"> • BGS • Ageing Better • Delirium Champions - YouTube
Carers / Social Care / Care Homes	<ul style="list-style-type: none"> • The Care Provider Alliance • Skills for Care • The Care Workers' Charity • Supporting Adult Carers • Adult Social Care Update • Adult social care in England, monthly statistics: June 2022 - GOV.UK (www.gov.uk)
Young Carers	
Complex Needs	
Family Planning & Sexual Health	
Family Planning	<ul style="list-style-type: none"> • Faculty of Sexual and Reproductive Healthcare Education and Training
Reproductive	<ul style="list-style-type: none"> • Tommys
Sexual Health / Sexual Abuse	<ul style="list-style-type: none"> • Sexual and Reproductive Health Profiles • FSRH Education & Training
Maternity / Neonate health	

Care of Patients with Long Term Conditions	
LTC	<ul style="list-style-type: none"> • Physical Activity for the Prevention and Management of Long-Term Conditions • New UCLPartners search tools for EMIS and SystmOne highlighted in national primary care pandemic recovery guidance - UCLPartners • Resources - Chronic Conditions
Diabetes & Pre-Diabetes	<ul style="list-style-type: none"> • AZ Medical and Educational Goods and Services in Diabetes • Mumoactive • The mySugr App • Recommendations Type 2 diabetes in adults: management Guidance NICE • Restoring routine NHS diabetes nursing care: what will it take? (rcni.com) • Hot Topics Diabetes Clinic - Tuesday 5th July 2022 NB Medical • Prevent type 2 diabetes (govdelivery.com)
Respiratory	<ul style="list-style-type: none"> • Spirometry: step by step • ARTP • British Lung Foundation • The Primary Care Respiratory Society
COPD	<ul style="list-style-type: none"> • Right Breathe • GOLD COPD 2022 strategy Independent professional body guideline Guidelines • GSK: Imagine if even walking to the park made you breathless (Contains brand information) (cogora.com) • Poor sleep raises risk of COPD flare-ups, study finds - Nursing in Practice
Asthma	<ul style="list-style-type: none"> • FeNO - Fractional exhaled nitric oxide - for the diagnosis and management of Asthma • Asthma UK • Asthma: diagnosis, monitoring and chronic asthma management • GINA 2021: the missing pieces in the childhood asthma puzzle • GINA: Interim Guidance About COVID-19 & Asthma • SIGN and BTS management of asthma in children guideline Independent professional body guideline Guidelines • GSK: The ACT (Asthma Control Test): a simple tool to help assess control (Contains brand information) (mgp.co.uk)

Continuation of Long Term Conditions

Hypertension	<ul style="list-style-type: none"> • British Heart Foundation • Blood Pressure UK • Hypertension in adults: diagnosis and management • Hypertension in adults: diagnosis and treatment • NICE hypertension guideline NICE guideline Guidelines
CVD/AF	<ul style="list-style-type: none"> • QRISK®3-2018 risk calculator • Heart Rhythm Alliance • CVD risk assessment and management • AHA Journals • NHS lipid management pathway NHS guideline Guidelines • Recommendations Type 2 diabetes in adults: management Guidance NICE • Hundreds of thousands set to benefit as NICE final draft guidance recommends new treatment to prevent heart attacks and strokes in people with raised blood fats News and features News NICE • Fish oil drug provisionally approved by NICE for cardiovascular prevention MIMS online • Lipid management searches - NHS Digital
Heart Failure	<ul style="list-style-type: none"> • British Heart Foundation • British Society Guidelines
Cancer / Oncology	<ul style="list-style-type: none"> • Surviving Thyroid Cancer • Help Us Help You - Lung Cancer Symptoms • Becca Breast Cancer Support App • Breast Cancer Now • MoleCare App • Macmillian • Bowel Cancer UK
Chronic Kidney Disease	<ul style="list-style-type: none"> • Kidney.Org • Kidney Quality Improvement Partnership
Liver Disease	<ul style="list-style-type: none"> • British Liver Trust • Liver Research • BRITISH ASSOCIATION FOR THE STUDY OF THE LIVER • LIVeRnORTH • LIVER DISEASE AND CIRRHOSIS

Continuation of Long Term Conditions

Blood Disorders	<ul style="list-style-type: none"> • Blood Cancer • Thalassaemia • ITP • Haemophilia • UK MDS Forum • Save a life. Give plasma. • Diagnosis and management of pernicious anaemia • Haemochromatosis UK • Managing iron deficiency anaemia Video Guidelines in Practice
G.I	<ul style="list-style-type: none"> • GIST Cancer UK • Faecal Immunochemical Testing (FIT) in patients with signs or symptoms of suspected colorectal cancer (CRC): A joint guideline from the Association of Coloproctology of Great Britain & Ireland (ACPGBI) and the British Society of Gastroenterology (BSG) - The British Society of Gastroenterology
ENT	
G.U	
ME / CFS / Fibromyalgia	
Neurological Conditions	<ul style="list-style-type: none"> • The Brain Tumour Charity • Narcolepsy.Org • ACNR • NICE epilepsies guideline NICE guideline Guidelines
Musculoskeletal Conditions	<ul style="list-style-type: none"> • Rheumatology • National Axial Spondyloarthritis Society • Musculoskeletal health • Musculoskeletal health: 5 year prevention strategic framework • Faculty of Occupational Medicine • Guide to embedding your first contact physiotherapy service • Two thirds of gout patients do not receive preventative treatment MIMS online

Continuation of Long Term Conditions

Endocrine Disorders / Metabolic Disorders	<ul style="list-style-type: none"> • Endocrinology • Turner Syndrome Support Society • Thyroid Eye Disease • British Thyroid Foundation • Thyroid UK • Pituitary • Addisons Disease • Parathyroid UK • The Royal Osteoporosis Society • Metabolic Support UK
Frailty	<ul style="list-style-type: none"> • Recognising frailty • Identifying frailty • CLINICAL FRAILTY SCALE
Dementia	<ul style="list-style-type: none"> • Dementia UK • Understanding dementia • My House of Memories - NHS App • Dementia profile updates • Caring for Carers Dementia Support Group (Tuesdays) • Delirium Champions • Medscape Dementia
Allergy / Auto-immune / Genetic Conditions	<ul style="list-style-type: none"> • Allergy UK • Rheumatology • Addisons Disease
Obesity	<ul style="list-style-type: none"> • Obesity UK • NHS England » The NHS Digital Weight Management Programme • Referral to Weight Management
Pain Management	<ul style="list-style-type: none"> • Pain Concern • UK career framework for pain nurses
Genomics	

Continuation of Long Term Conditions

Dermatology	<ul style="list-style-type: none"> • British Association of Dermatologists • Eczema • The British Skin Foundation • Acne vulgaris: management • The Primary Care Dermatology Society • Acne.org • Allergy UK • Urticaria • Hives • Sunburn • Causes of cancer and reducing your risk • What is Rosacea? • Rosecea • Herpes.org • Shingles • Fungal Skin Infection - Foot • The Psoriasis Association • Psoriasis • Melanoma • Skin Health Information • British Association of Plastic Reconstructive and Aesthetic Surgeons • Warts and verrucae • Acne vulgaris: management • Atopic eczema in under-12s: diagnosis and management
Multi-Morbidity	<ul style="list-style-type: none"> • Multimorbidity • Multimorbidity / multiple long-term conditions (MLTC)
Minor Illness / First Contact Assessment / OSCE	<ul style="list-style-type: none"> • Fact Sheets - Self Care Forum

<i>Continuation of Long Term Conditions</i>	
Other / Case Studies	<ul style="list-style-type: none"> • Ultra Rare Disease Disorders And Disabilities Foundation • MyCognition Home - NHS App • The Cold Weather Plan for England • Two thirds of gout patients do not receive preventative treatment MIMS online
End of Life Care	
End of Life Care	<ul style="list-style-type: none"> • ReSPECT for healthcare professionals • Hospice UK • Palliative and End of Life Care Profiles - Data - OHID (phe.org.uk) • Palliative and End of Life Care Profiles - OHID (phe.org.uk) • NHS Continuing Healthcare NHS Confederation
Covid-19 / Monkeypox	
Covid-19	<ul style="list-style-type: none"> • Covid Live • COVID-19 variants: genomically confirmed case numbers - GOV.UK (www.gov.uk) • The R value and growth rate - GOV.UK (www.gov.uk) • National flu and COVID-19 surveillance reports: 2021 to 2022 season - GOV.UK (www.gov.uk) • COVID-19: information and advice for health and care professionals - GOV.UK (www.gov.uk) • NHS England » National infection prevention and control • COVID-19 latest guidance (rcgp.org.uk) • COVID-19 variants: genomically confirmed case numbers • Coronavirus (COVID-19) Infection Survey, UK: characteristics of people testing positive for COVID-19, 8 June 2022 - GOV.UK (www.gov.uk)
Long Covid	<ul style="list-style-type: none"> • Supporting your recovery after COVID-19 • Long Covid Toolkit • Long term effects of COVID (Long COVID) • Post-COVID Syndrome (Long COVID) • COVID-19 Yorkshire Rehabilitation Screening Tool • FOM Guidance • Lung health care after COVID-19 • Long-COVID in children: how to spot the signs and offer support (rcni.com) • Improving disability data to understand the effects of coronavirus (COVID-19) on people with different impairment types - GOV.UK (www.gov.uk)

Monkeypox	<ul style="list-style-type: none"> • Monkeypox: guidance - GOV.UK (www.gov.uk) • Way forward ◇ Business Stakeholder engagement (govdelivery.com) • Monkeypox cases confirmed in England – latest updates - GOV.UK (www.gov.uk) • Health workers caring for monkeypox patients to be offered smallpox vaccine - Nursing in Practice
News & Views	
Digital News / Remote Consultations	<ul style="list-style-type: none"> • Digital Health News Webinars • Digital Health News • NHS Digital • Your daily news updates from Digital Health (campaign-archive.com) • Your daily news updates from Digital Health (campaign-archive.com) • Upcoming Best Practice Webinars (mailchi.mp) • Digital Health Networks Newsletter: 13 June 2022 (mailchi.mp)
PSNC News / Pharmacy	<ul style="list-style-type: none"> • National Pharmacy Association • Royal Pharmaceutical Society • Medicines Learning Portal • Specialist Pharmacy Service • PSNC Newsletter: 8th June (mailchi.mp) • PSNC Newsletter: 15th June (mailchi.mp) • NHS England » NHS violence prevention and reduction standard: guidance notes • PSNC Newsletter: 13th June (mailchi.mp)
Pulse / GP Online / HSJ / NB Medical	<ul style="list-style-type: none"> • GP Online • HSJ • Pulse Today

Continuation News & Views

Primary Care Update / PCC / PPP	<ul style="list-style-type: none"> • Public Policy Projects News
Health Care Leaders Newsletters	
Kings Fund	<ul style="list-style-type: none"> • The Kings Fund • Make sense of the system (kingsfundmail.org.uk) • Time for action on poverty The King's Fund (kingsfund.org.uk) • Ideas that change health and care The King's Fund (kingsfund.org.uk) • Just launched Provider collaboration virtual conference (kingsfundmail.org.uk)
World Health Organisation	<ul style="list-style-type: none"> • WHO • OpenWHO
IHCT / CCG / STP / Healthier Futures	<ul style="list-style-type: none"> • Healthier Futures • Black Country & West Birmingham CCG • Dudley Integrated Health and Care • Dudley CCG • Home :: Black Country Healthcare NHS Foundation Trust
NHSI / NHSE	
University / Student Nurses	
Medisa / Univadis / Geeky Medics / GP Notebook / Medscape	<ul style="list-style-type: none"> • Univadis Newsletter • Univadis Nurses Headlines • Medisa • Geeky Medics • Medscape Nurses • GP Notebook • GPnotebook quick update (contains GSK brand info: Could you reduce the exacerbation risk for your COPD patients?) (mailchi.mp) • Latest videos on GPnotebook TV (contains advertisement) (mailchi.mp) • 500+ OSCE Stations, new YouTube content & more (mailerlite.com) • Practice-changing updates from GPnotebook: June 2022 (mailchi.mp)
Nurse Guidelines	<ul style="list-style-type: none"> • Expert Insights Chiesi Air • Upd

Continuation News & Views

The Health Foundation	<ul style="list-style-type: none"> • The Health Foundation • Time for action on nurses' pay (healthfdn.org.uk)
The Health Care Leaders Update	<ul style="list-style-type: none"> • Health Care Leader News
Practice Index	
Innovation Agency	<ul style="list-style-type: none"> • Innovation Agency Exchange
NMC	<ul style="list-style-type: none"> • NMC • NMC set to overhaul public health and community nursing standards (rcni.com) • NMC register is at the highest level ever (news-nmc.org.uk)
RCN	<ul style="list-style-type: none"> • RCN • Exploited and lied to – the reality for overseas nurses working in the NHS (rcni.com) • Night shifts: Take naps and avoid more than three nurses told (rcni.com) • Nursing Under Unsustainable Pressure Publications Royal College of Nursing (rcn.org.uk) • Working flat out, invisible practice nurses whose talent is ignored (rcni.com) • Nurses have endured a decade of falling wages, study finds (rcni.com) • Is mental health nursing at risk of becoming a lost profession? (rcni.com) • Restoring routine NHS diabetes nursing care: what will it take? (rcni.com)
Nursing in Practice / Nursing Standard / Independent Nurse	<ul style="list-style-type: none"> • Nursing Times • Independent Nurse Magazine • Practice Nursing • Practice Nursing Bulletin • GPN Bulletin • Nursing in Practice - Clinical • Nursing in Practice - Bulletin
QNI	<ul style="list-style-type: none"> • QNI • Talk To Us © – The Queen's Nursing Institute (qni.org.uk)
CMO / CNO	

WHO	<ul style="list-style-type: none"> • WHO
Nice	<ul style="list-style-type: none"> • NICE
RCGP / BMA / The Lancet	<ul style="list-style-type: none"> • The Lancet • British Medical Journal • Royal College of General Practitioners
Midlands Academic Health Science Network	<ul style="list-style-type: none"> • WMAHSN Network • WMAHSN May Update
Healthwatch	<ul style="list-style-type: none"> • Healthwatch
Other	<ul style="list-style-type: none"> • New UCLPartners Search Tools to support Long Term Condition Recovery (mailchi.mp) • NHS Big Tea 2022 - NHS Charities Together
Free Training / Webinars / Meetings / CPD	
Development / Information and Knowledge	<ul style="list-style-type: none"> • FutureProof Health Training & Events • Red Whale Training • LATEST WEBINARS FROM ISSUES & ANSWERS • Nursing Events • NNG Conference week - Register today (mahealthcareevents.co.uk) • CPD - Interpreting Blood Results in Primary Care Master Class 18/06/22 (mailchi.mp) • Wound Expo 2022 - Registration now open (mahealthcareevents.co.uk) • Hot Topics Diabetes Clinic - Tuesday 5th July 2022 NB Medical • Register now - Are you ready to meet the challenge? (AstraZeneca non-promotional content) • Time for action on poverty The King's Fund (kingsfund.org.uk) • Welcome - Guidelines Live 2022 • NVEJUL22 - Respiratory, Wound Care, and Dermatology - NIP 365 (nursinginpractice365.uk) • Practice Staff Virtual Training from BCWB Training Hub • UK Health Security Agency Annual Conference 2022 - October • Telling Your Organisation's Sustainability Story
Free to RCN	
MIMMs Learning	

Continuation of Free Training / Webinars / Meetings / CPD

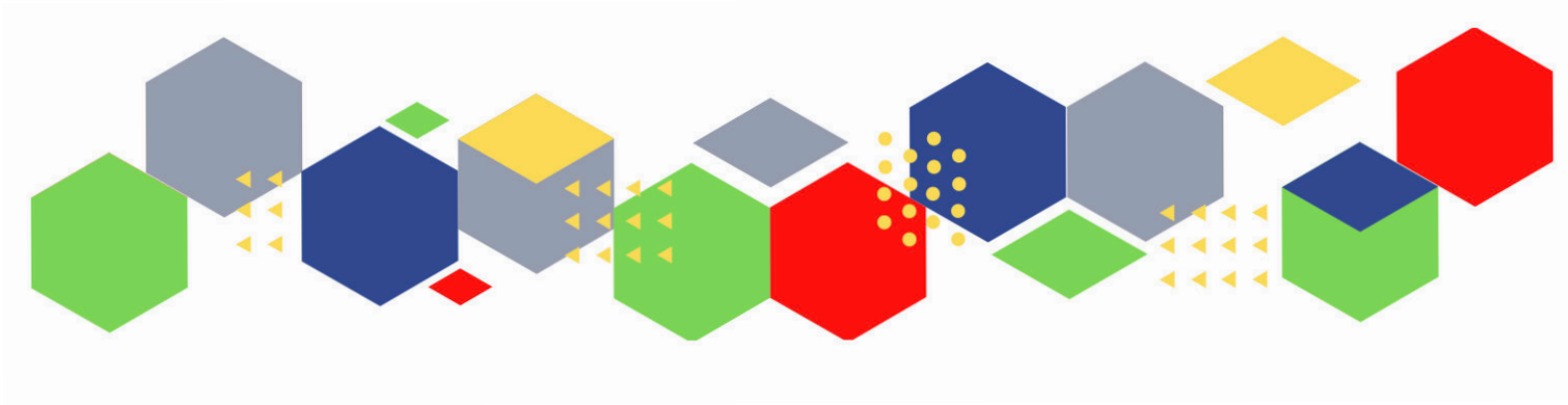
Future Proof Health Training	<ul style="list-style-type: none"> • Type 2 Diabetes and the medication choices in diabetes care and covid • ENT 1/2 Day • F2F - BCWB Diabetes Footcare Education • VIRTUAL - BCWB Diabetes Footcare Education
BCWB Training Hub	
Evidence based care	
Eventbrite	<ul style="list-style-type: none"> • Future Proof Health Eventbrite Page • Emerging models in diabetes – 14th June, 12:30-13:30 - https://www.eventbrite.co.uk/e/250128078817 • Supporting families and children through VGCs – 13th July, 12:30-13:30 - https://www.eventbrite.co.uk/e/250133545167 • Making the most of digital systems to deliver Video Group Clinics, 12:30-13:30 - https://www.eventbrite.co.uk/e/250244376667
e-Learning for Health	<ul style="list-style-type: none"> • New elearning session highlights dermatological side effects of COVID-19 • New COVID-19 community contact tracing programme now available • Staff Recovery Resources for critical care and the wider health workforce recovering from the COVID-19 pandemic • MindEd infographic highlights programme's success during COVID-19 • Long COVID elearning session available • The Changing Story of Cancer programme • Updates to the Flu Immunisation elearning programme for the 2021/22 flu season • Flu Immunisation programme - elearning • Foundation elearning programme update September 2021 • Virtual wards enabled by technology - elearning for healthcare (e-lfh.org.uk)

Continuation of Free Training / Webinars / Meetings / CPD

YouTube	<ul style="list-style-type: none"> • NHS England • Black Country Healthcare - YouTube
Blogs/Vlogs	<ul style="list-style-type: none"> • Information on monkeypox and our investigation into recent cases - UK Health Security Agency (blog.gov.uk) • A voice to lead: International Nurses Day 2022 - UK Health Security Agency (blog.gov.uk) • An increase in Hepatitis Cases in Children - UK Health Security Agency (blog.gov.uk) • UKHSA'S weekly surveillance report: focusing on 'Pillar 1' data - UK Health Security Agency (blog.gov.uk) • What is Lyme disease, and why do we need to be tick aware? - UK Health Security Agency (blog.gov.uk) • What to do if you have symptoms of a respiratory infection including COVID-19, or a positive COVID-19 test - UK Health Security Agency (blog.gov.uk) • London's communities remain vulnerable to COVID-19 without full vaccine protection - UK Health Security Agency • How science can protect us from the health effects of climate change - UK Health Security Agency • Thunderstorm asthma and public health – looking back to move forward - UK Health Security Agency • Taking the sting out of new and emerging health threats - UK Health Security Agency • Blog NB Medical • Information on monkeypox and our investigation into recent cases - UK Health Security Agency (blog.gov.uk) • A voice to lead: International Nurses Day 2022 - UK Health Security Agency (blog.gov.uk) • An increase in Hepatitis Cases in Children - UK Health Security Agency (blog.gov.uk) • UKHSA'S weekly surveillance report: focusing on 'Pillar 1' data - UK Health Security Agency (blog.gov.uk) • What is Lyme disease, and why do we need to be tick aware? - UK Health Security Agency (blog.gov.uk) • What to do if you have symptoms of a respiratory infection including COVID-19, or a positive COVID-19 test - UK Health Security Agency (blog.gov.uk) • London's communities remain vulnerable to COVID-19 without full vaccine protection - UK Health Security Agency • How science can protect us from the health effects of climate change - UK Health Security Agency • Thunderstorm asthma and public health – looking back to move forward - UK Health Security Agency • Taking the sting out of new and emerging health threats - UK Health Security Agency
Area Bulletins	

Continuation of Free Training / Webinars / Meetings / CPD

Podcasts	<ul style="list-style-type: none"> • The Nursing Handover Podcast • Nursing Standard Podcasts • What Makes a Nurse? • The MedicsPro Podcast • Nursing Matters • Welcome to the BJN Podcast • Why we care • EBN podcast • This Is Nursing • Maroon Mindset • Teach me, I'm a Nurse • Past Caring • RCGP eLearning podcast • The BMJ Podcast • Primary Care Network podcasts • The Professional Support Unit's Pandemic Podcast • How can public health nurses help deliver the Healthy Child Programme this winter? • Talking GP • Podcast – Matthew Winn – ICS Incoming.... Primary Care and Community Trusts • NB Hot Topics Podcast • Podcast: Will the rising cost of living be paid for by our health? (healthfdn.org.uk) • Lovegrove on Health - Podcast episode #4 - Skills for Health • Latest podcast episodes from GPnotebook (mailchi.mp) • The Next GenCast on Apple Podcasts • Lyme disease: what should nurses be looking out for? (rcni.com) • Dr Nikki Kanani: values, vaccines and a vision for general practice The King's Fund (kingsfund.org.uk)
Research	<ul style="list-style-type: none"> • Science Daily • Multimorbidity / multiple long-term conditions (MLTC) • Results of Research Excellence Framework are published – UKRI
Freebies	<ul style="list-style-type: none"> • Blue Light Card
Other	



Thank you for reading Future Proof Health's weekly news!

If you missed past issues, please click [here](#) to view them

More information can be found on our website, [here](#)

Don't forget to like us on [Facebook](#) & Follow us on [Twitter](#)

