

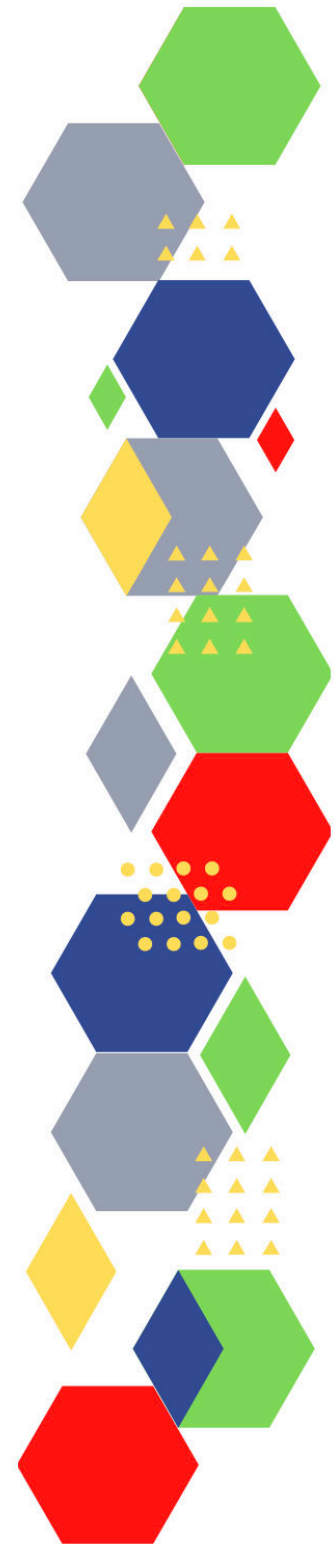
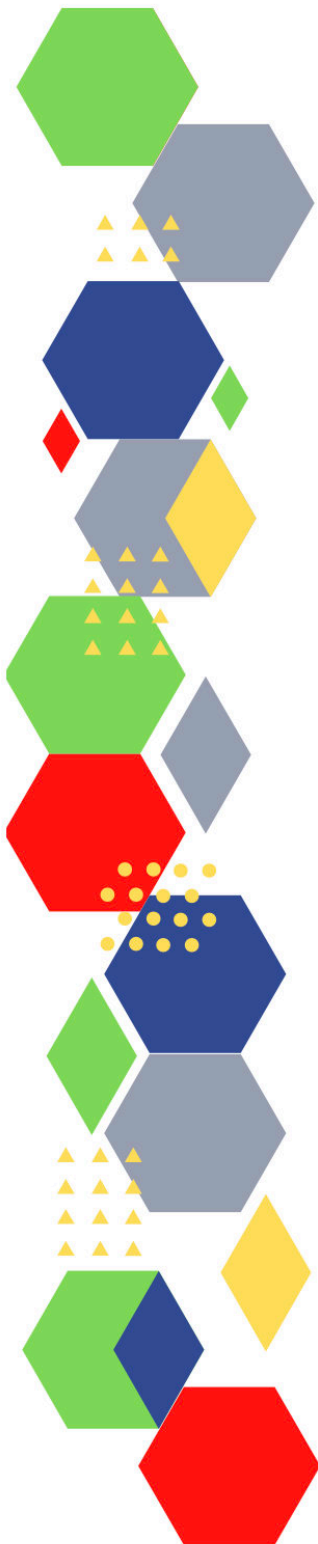


FutureProof**Health**
Delivering tomorrow's healthcare

Future Proof Health Presents

Weekly News

24th November 2021



| Communication | |
|---|--|
| Communication with Patients | |
| Communication within Teams | |
| Consent | <ul style="list-style-type: none"> • Gillick competency and Fraser guidelines • CONSENT POLICY • ReSPECT for healthcare professionals |
| People and Personal Development | |
| Personal / People Development / Leadership | <ul style="list-style-type: none"> • Accountability and delegation in practice |
| NHS Employers / HR / NHS Pension | <ul style="list-style-type: none"> • NHS Employers • Pensions Online |
| Health, Safety & Security | |
| <ul style="list-style-type: none"> • NPSA • Control of Substances Hazardous to Health (COSHH) | |
| Gov UK - Health Security | <ul style="list-style-type: none"> • The local government finance system in England: overview and challenges • Under pressure: NHS priorities this winter |
| CQC | <ul style="list-style-type: none"> • GP mythbusters • Examples of outstanding practice for GPs • CQC update for adult social care providers • Collaboration and challenge in mental health care for children and young people during the pandemic |
| Vaccines / Medications / Prescribing | <ul style="list-style-type: none"> • Protocol for ordering, storing and handling vaccines • A Competency Framework for all Prescribers • Non-medical prescribing • The Human Medicines Regulations 2012 • RCN - Non-medical prescribers • Royal Pharmaceutical Society • Standards for prescribing • Clinical Negligence Scheme for General Practice • National overprescribing review report |

| | |
|---|---|
| MIMS | <ul style="list-style-type: none"> • Prescribing Update |
| Antibiotic steward-ship / Anti-microbial resistance | <ul style="list-style-type: none"> • English surveillance programme for antimicrobial utilisation and resistance (ESPAUR) report • FREE resources to support antibiotic prescribing |
| Drug / Device Alerts (MHRA) | <ul style="list-style-type: none"> • BIA-MHRA Joint Conference 2021 |
| Emergency Situations | <ul style="list-style-type: none"> • The updated National Early Warning Score and its use with suspected Sepsis • Resuscitation Council UK • What is Same Day Emergency Care (SDEC)? |
| Infection Control / Infection Statics | |
| Safe Guarding | <ul style="list-style-type: none"> • Female genital mutilation (FGM) • PREVENT • Child protection system in the UK • Safeguarding Adults • Safeguarding children: detailed information |
| Practice Policies | |
| Audit | |
| Information Governance / Record Keeping | <ul style="list-style-type: none"> • Guide to Data Protection • Supporting general practice – Medical record keeping |
| Quality & Service Improvement | |
| Quality, Service & Improvement | <ul style="list-style-type: none"> • The PRSB • General Practice Assessment Questionnaire (GPAQ) • Healthwatch • NHS Five Year Forward View • General Practice Forward View • NMC • Dr Jon Griffiths • NHS Confed |

| | |
|--|--|
| Roles in General Practice | <ul style="list-style-type: none"> • Standards for nursing associates • GP mythbuster 57: Health Care Assistants in General Practice • Social Prescribing |
| Revalidation | |
| Personal Practice & Development | |
| Practice Management | <ul style="list-style-type: none"> • Institute of General Practice Management • Practice Index |
| NHS Self Care & Resilience | <ul style="list-style-type: none"> • Samaritans • Mental Health at work • Calm • Supporting our NHS people |
| Practice Transformation | |
| Future of NHS / General Practice | <ul style="list-style-type: none"> • The future of General Practice |
| ICS / PCN | <ul style="list-style-type: none"> • The challenges of developing integrated care partnerships (ICPs): a discussion |
| QOF / PHOF / DES / LES | |
| Leadership | <ul style="list-style-type: none"> • Leadership Academy |
| Personalised Care | |
| Personalised Care / Self Care / Social Prescribing / Health Coaching | <ul style="list-style-type: none"> • Self Care forum • Personalised Care Institute • Personalised care • Social Prescribing Academy • Personalised Care Institute Website • Nursing in Practice Bulletin |
| Group consultation | |
| Working Differently | |

Equality & Diversity

| | |
|------------------------------------|---|
| Equality & Diversity | <ul style="list-style-type: none"> • Public Health Profiles |
| Inclusion Health | <ul style="list-style-type: none"> • Health Creation Academic Network |
| Poverty / Homelessness | <ul style="list-style-type: none"> • Crisis • This is Poverty |
| Population Health | |
| Thrive Into Work | <ul style="list-style-type: none"> • Thrive into Work • Thrive into Work Referral form |
| Health Inequalities | |
| Trans / Non-binary Health / LGBTQ+ | <ul style="list-style-type: none"> • LGBT Foundation • NHS population screening: information for trans and non-binary people • Cervical screening for trans men and/or non-binary people |
| Migrant / Refugee Health | <ul style="list-style-type: none"> • THE REFUGEE & MIGRANT CENTRE • COVID-19: migrant health guide |
| Traveller / Gypsy / Romany Health | |
| Veterans Health | <ul style="list-style-type: none"> • The first call for help takes courage |

| Management of Emergency Situations | |
|------------------------------------|--|
| Management of Emergency Situations | <ul style="list-style-type: none"> • The updated National Early Warning Score and its use with suspected Sepsis |
| 111 | |
| Red Flags | <ul style="list-style-type: none"> • Supporting general practice – Common pitfalls |
| Sepsis | <ul style="list-style-type: none"> • Sepsis: recognition, diagnosis and early management • Sepsis guidance implementation advice for adults • Sepsis in Children • Sepsis Trust • RCGP: Sepsis • quick SEPSIS RELATED ORGAN FAILURE ASSESSMENT |
| Therapeutic Monitoring | |
| OSCE | <ul style="list-style-type: none"> • Geeky Medics • Abdominal Examination - Demonstration - YouTube • Cardiovascular Examination - Demonstration - YouTube • Respiratory Examination - Demonstration - YouTube • Physical Diagnosis Skills - University of Washington School of Medicine • UC San Diego's Practical Guide to Clinical Medicine • Medistudents — Get a place in medical school |
| Role Specific | |
| Cervical Cytology | <ul style="list-style-type: none"> • Guide to the interim assessment • British Association for Cytopathology • Lab Tests Online |
| Ear Care | <ul style="list-style-type: none"> • Ear Care Centre • RNID |
| Wound Management | <ul style="list-style-type: none"> • Microworld • Tissue Viability Society • Best Practice, Leadership, Support • Caring for older patients with complex needs |
| Minor Surgery | |
| Obtaining Samples / Results | <ul style="list-style-type: none"> • Lab Tests Online |

| Health Promotion / Health Screening | |
|--|--|
| Health Promotion / Population Health | <ul style="list-style-type: none"> • Better Health • EXi App |
| Health Screening | <ul style="list-style-type: none"> • PHE Screening |
| PHE/OHID | <ul style="list-style-type: none"> • Knowledge & Library Services • Campaign Resources • Public Health Profiles • Health Publications • Health Profile for England 2021 |
| NHS Health Check | <ul style="list-style-type: none"> • NHS Health Check |
| NOIDS / PHE Surveillance / Syndromic Surveillance | <ul style="list-style-type: none"> • Notifications of infectious diseases (NOIDs) |
| Addiction/Smoking | <ul style="list-style-type: none"> • Drink Coach • Stop smoking interventions and services |
| Immunisation / Travel Health | |
| <ul style="list-style-type: none"> • Vaccinations and infections • Joint Committee on Vaccination and Immunisation • Immunisation against infectious disease • West Midlands Immunisation Service • Immunisation information for Health Care Services within the West Midlands area • Vaccination of individuals with uncertain or incomplete immunisation status • WHO vaccine-preventable diseases: monitoring system. 2020 global summary • The Foundations of Immunization: What, Who, When and Why? • Winter Vaccination - Prime phase: Social Media content calendar and assets - 2021 • Helping to tackle vaccine hesitancy | |

| <i>Continuation of Immunisation / Travel Health</i> | |
|---|--|
| Flu | <ul style="list-style-type: none"> • Flu and flu vaccinations • The national influenza immunisation programme 2021 to 2022 • Flu vaccines for the 2021 to 2022 season poster • Appendix C: Flu vaccinator competency assessment tool • Healthcare assistants and flu vaccinations • Flu Campaign Resources 2021/22 • Seasonal flu vaccine uptake in GP patients: monthly data, 2021 to 2022 |
| Covid Vaccine | <ul style="list-style-type: none"> • Greenbook COVID-19 chapter 14a • Updates made to the COVID-19 vaccination elearning programme • HEE e-LfH COVID-19 vaccination programme launches hit 2 million • COVID-19 Vaccine Moderna e-learning now available • COVID-19 booster vaccine programme for winter 2021 to 2022: JCVI statement, November 2021 • COVID-19 vaccination in children and young people aged 16 to 17 years: JCVI statement, November 2021 • Government accepts JCVI advice on COVID-19 vaccination programme • COVID-19 vaccination programme: phase 3 2021/22 |
| Children | |
| Adults | <ul style="list-style-type: none"> • Immunisation patient group direction (PGD) templates • Shingles immunisation programme: introduction of Shingrix® letter |
| Vaccine Update | <ul style="list-style-type: none"> • Vaccine update • Vaccine Update Index |
| PGD | |
| Travel Health | <ul style="list-style-type: none"> • Travel Health Pro • Fit for Travel • Travel Health • Jane Chiodini • Corona.Help • Yellow fever vaccine (Stamaril): new pre-vaccination checklist • Reminder for health professionals on recognising possible human cases of Avian Influenza and accessing testing |

| Mental Health / Learning Disability / Disability | |
|--|---|
| Mental Health | <ul style="list-style-type: none"> • Mental Health • Mental Health UK • Mind • Place2b • Rethink Mental Illness • Young Minds • Every Mind Matters • Calm • Headspace • We Can Talk • Get Your Mind Plan • Feeling low? • Better Health - Every Mind Matters - Resources • ZSA Training |
| Learning Disability | <ul style="list-style-type: none"> • Learning Disabilities • Learning Disability England • Mencap • Bild • Autism • Blood tests for people with learning disabilities: making reasonable adjustments • Flu vaccinations for people with learning disabilities |
| Disability | <ul style="list-style-type: none"> • Disability Rights UK • Disability Matters |

From Cradle to...

| | |
|--------------------------|---|
| <p>Infant Health</p> | <ul style="list-style-type: none"> • Tommys • First Steps Nutrition Trust • Bliss • NHS App - Baby Buddy • NHS App - Peanut • ICON Toolkit |
| <p>Child Health</p> | <ul style="list-style-type: none"> • Unicef • Health Professional Academy • Premature Babies • Child and Maternal Health • Women and Child First • Child Health Information Services • Place2b • Childhood eczema • Childhood asthma • Childrens Commissioner - The Big Answer • Suicide in Children and Young People • Under 16 Cancer Experience Survey • Babies, children and young people's experience of healthcare • Spotlight on the Early Years • Managing cow's milk allergy, do you support the gut microbiome? A series of cases from clinical practice • NHS to open first specialist clinics for severely obese children |
| <p>Adolescent Health</p> | <ul style="list-style-type: none"> • Adolescent Health Programme • Society for Adolescent Health and Medicine • Young Minds |

| | |
|-----------------------------|--|
| <p>Mens Health</p> | <ul style="list-style-type: none"> • Mens Health Forum • Mens Health Month • Mens health.org • Mens Health UK • Men and mental health • Men's Mental Health Awareness • Prostate Cancer UK • Orchid Fighting Male Cancer • Prostate Cancer UK Facebook Page • Men's Voices Event • Movember • Levelling up men's health: The case for a men's health strategy |
| <p>Women's Health</p> | <ul style="list-style-type: none"> • Womens Health Concern • Well Being of Women • Coppa Feel • Menopause Matters • The Menopause Charity • Royal College of Obstetricians and Gynaecologists - Guidelines • Pelvic Partnership • CRUK - Womens Cancer • Breast Cancer Now • Foundation for Women's Cancer • Eve Appeal • Ovarian.Org • Jo's Trust • Well Spring |
| <p>The Older Population</p> | <ul style="list-style-type: none"> • Ageing Better • The MDTea Podcast |

| | |
|--|--|
| Carers | <ul style="list-style-type: none"> • The Care Provider Alliance • Skills for Care • The Care Workers' Charity • Supporting Adult Carers • Adult Social Care Update • Adult social care campaign to build bigger and better workforce • State of Caring 2021 • A radical new vision for social care |
| Young Carers | |
| Complex Needs | |
| Family Planning & Sexual Health | |
| Family Planning | • Faculty of Sexual and Reproductive Healthcare Education and Training |
| Reproductive | • Tommys |
| Sexual Health | <ul style="list-style-type: none"> • Sexual and Reproductive Health Profiles • FSRH Education & Training |
| Maternity / Neonate health | • CMV in pregnancy |
| Care of Patients with Long Term Conditions | |
| LTC | • Chronic Conditions On Demand |
| Diabetes & Pre-Diabetes | <ul style="list-style-type: none"> • AZ Medical and Educational Goods and Services in Diabetes • Mumoactive • The mySugr App • Foot Check • Optimising Holistic Diabetes Review in Primary Care |
| Respiratory | <ul style="list-style-type: none"> • Spirometry: step by step • ARTP • British Lung Foundation • The Primary Care Respiratory Society |
| COPD | • Right Breathe |

| <i>Continuation of Long Term Conditions</i> | |
|---|--|
| Asthma | <ul style="list-style-type: none"> • FeNO - Fractional exhaled nitric oxide - for the diagnosis and management of Asthma • Asthma UK • Asthma: diagnosis, monitoring and chronic asthma management • GINA 2021: the missing pieces in the childhood asthma puzzle • GINA: Interim Guidance About COVID-19 & Asthma • Fractional Exhaled Nitric Oxide (FeNO) |
| Hypertension | <ul style="list-style-type: none"> • British Heart Foundation • Blood Pressure UK • Hypertension in adults: diagnosis and management • Hypertension in adults: diagnosis and treatment |
| CVD/AF | <ul style="list-style-type: none"> • QRISK®3-2018 risk calculator • Heart Rhythm Alliance • CVD risk assessment and management • Health matters: preventing cardiovascular disease • NICE impact cardiovascular disease prevention • Thousands spared strokes thanks to new NHS drug agreements • Advanced service specification: NHS community pharmacy hypertension case-finding advanced service |
| Heart Failure | <ul style="list-style-type: none"> • British Heart Foundation • British Society Guidelines |
| Cancer / Oncology | <ul style="list-style-type: none"> • Surviving Thyroid Cancer • Help Us Help You - Lung Cancer Symptoms • Becca Breast Cancer Support App • Breast Cancer Now • MoleCare App • Macmillian • Catching cancer early: how research could help us improve |
| Chronic Kidney Disease | <ul style="list-style-type: none"> • Kidney.Org • Kidney Quality Improvement Partnership |

| <i>Continuation of Long Term Conditions</i> | |
|---|--|
| Liver Disease | <ul style="list-style-type: none"> • British Liver Trust • Liver Research • BRITISH ASSOCIATION FOR THE STUDY OF THE LIVER • LIVERnORTH • LIVER DISEASE AND CIRRHOSIS |
| Blood Disorders | <ul style="list-style-type: none"> • Blood Cancer • Thalassaemia • ITP • Haemophilia • UK MDS Forum • Save a life. Give plasma. • Diagnosis and management of pernicious anaemia |
| G.I | <ul style="list-style-type: none"> • GIST Cancer UK |
| ENT | |
| G.U | |
| Neurological Conditions | <ul style="list-style-type: none"> • The Brain Tumour Charity • Narcolepsy.Org • ACNR • Tailoring Management Strategies for My Patients With MS • Government to invest £375 million in neurodegenerative disease research |
| Musculoskeletal Conditions | <ul style="list-style-type: none"> • Rheumatology • National Axial Spondyloarthritis Society • Musculoskeletal health • Musculoskeletal health: 5 year prevention strategic framework • Faculty of Occupational Medicine • Guide to embedding your first contact physiotherapy service |

Continuation of Long Term Conditions

| | |
|--|--|
| <p>Endocrine Disorders / Metabolic Disorders</p> | <ul style="list-style-type: none"> • Endocrinology • Turner Syndrome Support Society • Thyroid Eye Disease • British Thyroid Foundation • Thyroid UK • Pituitary • Addisons Disease • Parathyroid UK • The Royal Osteoporosis Society • Metabolic Support UK |
| <p>Frailty</p> | <ul style="list-style-type: none"> • Recognising frailty • Identifying frailty • CLINICAL FRAILTY SCALE |
| <p>Dementia</p> | <ul style="list-style-type: none"> • Dementia UK • Understanding dementia • My House of Memories - NHS App • Dementia profile updates • Caring for Carers Dementia Support Group (Tuesdays) • Delirium Champions |

Continuation of Long Term Conditions

| | |
|--|---|
| Dermatology | <ul style="list-style-type: none"> • British Association of Dermatologists • Eczema • The British Skin Foundation • Acne vulgaris: management • The Primary Care Dermatology Society • Acne.org • Allergy UK • Urticaria • Hives • Sunburn • Causes of cancer and reducing your risk • What is Rosacea? • Rosecea • Herpes.org • Shingles • Fungal Skin Infection - Foot • The Psoriasis Association • Psoriasis • Melanoma • Skin Health Information • British Association of Plastic Reconstructive and Aesthetic Surgeons • Warts and verrucae |
| Allergy / Auto-immune / Genetic Conditions | <ul style="list-style-type: none"> • Allergy UK • Rheumatology • Addisons Disease |
| Obesity | <ul style="list-style-type: none"> • Obesity UK • Healthy weight coach elearning programme: for primary care networks, healthcare practices and pharmacies • Healthy weight coach elearning programme: for primary care networks, healthcare practices and pharmacies |

| <i>Continuation of Long Term Conditions</i> | |
|---|--|
| Pain Management | <ul style="list-style-type: none"> • Pain Concern • UK career framework for pain nurses |
| Genomics | |
| Multi-Morbidity | <ul style="list-style-type: none"> • Multimorbidity • Multimorbidity / multiple long-term conditions (MLTC) |
| Minor Illness / First Contact Assessment | |
| Other / Case Studies | <ul style="list-style-type: none"> • Ultra Rare Disease Disorders And Disabilities Foundation • MyCognition Home - NHS App • The Cold Weather Plan for England |
| End of Life Care | |
| End of Life Care | <ul style="list-style-type: none"> • ReSPECT for healthcare professionals • Hospice UK |
| Covid-19 | |
| Covid-19 | <ul style="list-style-type: none"> • Covid Live • Coronavirus Statistics • Vaccination status of deaths and hospitalisations |
| Long Covid | <ul style="list-style-type: none"> • Supporting your recovery after COVID-19 • Long Covid Toolkit • Long term effects of COVID (Long COVID) • Post-COVID Syndrome (Long COVID) • COVID-19 Yorkshire Rehabilitation Screening Tool • FOM Guidance • COVID-19 rapid guideline: managing the long-term effects of COVID-19 |
| Covid Response / Recovery | |

| News & Views | |
|---|--|
| Digital News / Remote Consultations | <ul style="list-style-type: none"> • Digital Health News Webinars • Digital Health News • Digital Health Rewired - 15th - 16th March • Driving Patient Communication and Engagement Using Accessible Digital Tools • NHS Digital |
| PSNC News / Pharmacy | <ul style="list-style-type: none"> • National Pharmacy Association • Royal Pharmaceutical Society • Concessions Announcement • PSNC 19th November • PSNC 22nd November |
| 60 Second GP / Pulse / GP Online / HSJ / NB Medical | <ul style="list-style-type: none"> • 60 Second GP • GP Online • HSJ • Pulse Today |
| Primary Care Update / PCC / PPP | <ul style="list-style-type: none"> • Primary Care Bulletin • Public Policy Projects News |
| Practice Index | <ul style="list-style-type: none"> • Practice Index Weekly |
| Kings Fund | <ul style="list-style-type: none"> • The Kings Fund • Weekly News / Health Management and Policy Alert / Health and Well Being Bulletin / Digital Health Digest / Events Update • Ideas that change health and care |
| IHCT / CCG / STP / Healthier Futures | <ul style="list-style-type: none"> • Healthier Futures • Black Country & West Birmingham CCG • Dudley Integrated Health and Care |
| NHSI / NHSE | |
| University / Student Nurses | |

| <i>Continuation News & Views</i> | |
|--|---|
| Medisa / Univadis / Geeky Medics / GP Notebook / Medscape | <ul style="list-style-type: none"> • Univadis Newsletter • Univadis Nurses Headlines • Medisa • Geeky Medics • Medscape Nurses • GP Notebook • Latest UK Medical News & NHS Guidelines - Medscape UK |
| The Health Foundation | <ul style="list-style-type: none"> • The Health Foundation • Nurses' pay over the long term: what next? |
| The Health Care Leaders Update | <ul style="list-style-type: none"> • Health Care Leader News |
| Innovation Agency | <ul style="list-style-type: none"> • Innovation Agency Exchange |
| RCN | <ul style="list-style-type: none"> • RCN • Carols at Christmas • Why a fair and just learning culture is key to patient safety • RCN report provides evidence of risks to patient safety |
| Nursing in Practice / Nursing Standard / Independent Nurse | <ul style="list-style-type: none"> • Nursing in Practice Clinical • Nursing in Practice Bulletin • GPN Bulletin • Independent Nurse Magazine • Practice Nursing • Practice Nursing Highlights • The challenges of developing integrated care partnerships (ICPs): a discussion |

| <i>Continuation News & Views</i> | |
|--|--|
| QNI | • QNI |
| NMC | • NMC |
| CMO / CNO | |
| World Health Organisation | • WHO • OpenWHO |
| Nice | • NICE |
| RCGP / BMA / The Lancet | • The Lancet • British Medical Journal • Royal College of General Practitioners • QOF QI hub • BMA Update • RCGP News Updates |
| Midlands Academic Health Science Network | • WMAHSN Network • The AHSN Newsletter |
| Healthwatch | • Healthwatch • Covid survey report highlights health and care struggles during pandemic |
| Other | |

| Free Training / Webinars / Meetings / CPD | |
|---|--|
| e-Learning for Health | <ul style="list-style-type: none"> • New elearning session highlights dermatological side effects of COVID-19 • New COVID-19 community contact tracing programme now available • Staff Recovery Resources for critical care and the wider health workforce recovering from the COVID-19 pandemic • MindEd infographic highlights programme's success during COVID-19 • Long COVID elearning session available • The Changing Story of Cancer programme • Updates to the Flu Immunisation elearning programme for the 2021/22 flu season • Flu Immunisation programme - elearning • Foundation elearning programme update September 2021 |
| YouTube | <ul style="list-style-type: none"> • NHS England |
| Blogs/Vlogs | <ul style="list-style-type: none"> • What does the Health and Care Bill mean for NHS staff? |
| Area Bulletins | |
| BCWB Training Hub | <ul style="list-style-type: none"> • Black Country and West Birmingham Training Hub |

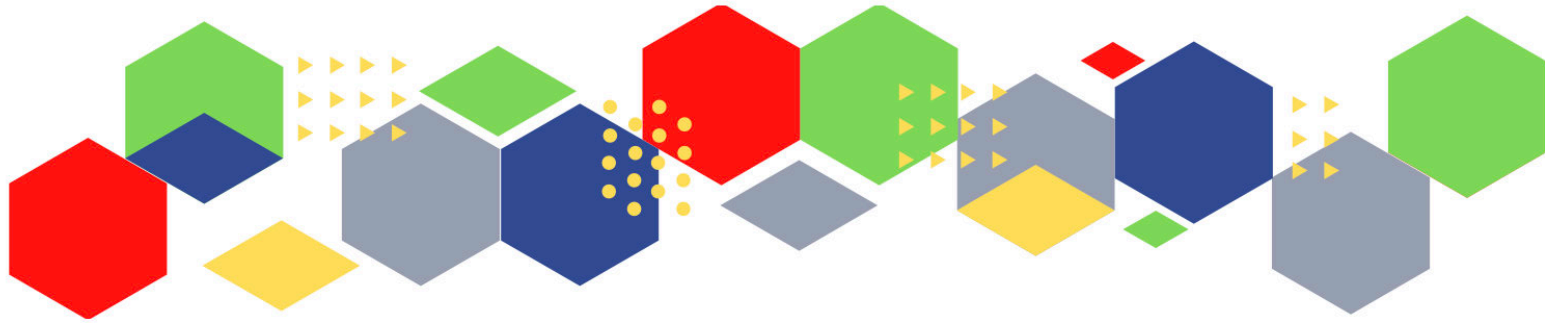
Continuation of Free Training / Webinars / Meetings / CPD

Development / Information and Knowledge

- [FutureProof Health Training & Events](#)
- [RCN Events - West Midlands](#)
- [Inaugural Broadcasts 2021](#)
- [24th March 2022 - RCN Clinical Research Nursing Conference 2022](#)
- [Menopause Training](#)
- [RCGP Learning](#)
- [Deep Dive on DPP-4 Inhibitors](#)
- [ISSUES & ANSWERS CONFERENCE SERIES 2021](#)
- [Bringing people together to share knowledge - Virtual Conferences](#)
- [ADVANCE CARE PLANNING](#)
- [IDENTIFYING & MANAGING A DYING PATIENT](#)
- [6th - 10th December - Wounds Week](#)
- [Monthly RCGP Post-Covid Syndrome \(Long Covid\) Training Session](#)
- [FREE eLearning on influenza](#)
- [Guidelines Live](#)
- [Thrive in Life: Enjoying Post Cancer Happiness - Birmingham Tickets, Multiple Dates | Eventbrite](#)
- [Gender, Feminism and Identity: What makes you, you? Tickets, Thu 25 Nov 2021 at 19:00 | Eventbrite](#)
- [Senior Mental Health Lead Training](#)
- [BAEM Education Resource Master Classes Webinar November- December 2021 Tickets, Multiple Dates | Eventbrite](#)
- [Celebrating World Diabetes Day - Living with Diabetes Q&A Webinar](#)
- [Ask Marc Launch Event](#)
- [GP Notebook Study Groups](#)
- [Healthy weight coach elearning programme launch Tickets, Thu 2 Dec 2021 at 11:30 | Eventbrite](#)
- [Wessex AHSN - FeNO Learning Collaborative 2 Tickets, Tue 14 Dec 2021 at 13:00 | Eventbrite](#)
- [Time for Care Programme/Access Improvement Programme](#)

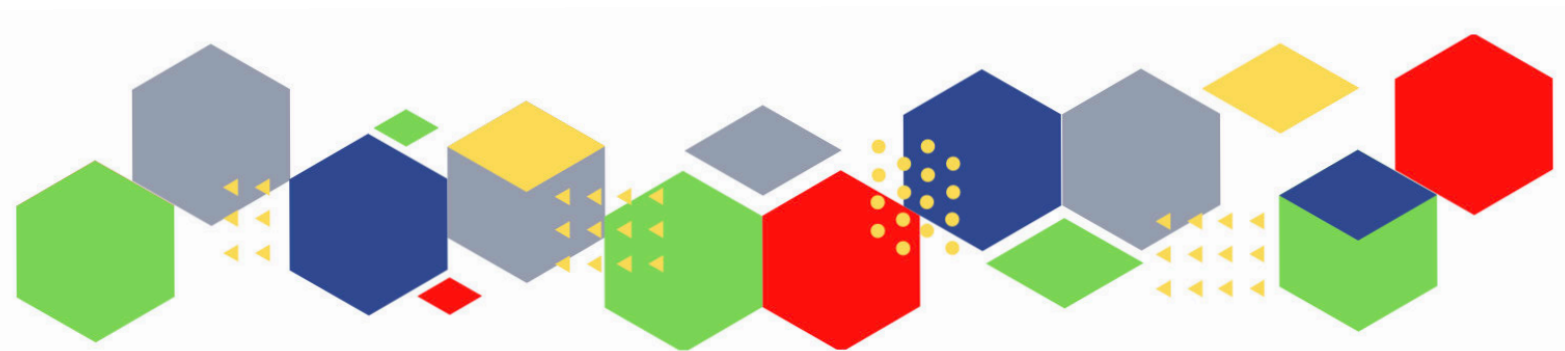
Continuation of Free Training / Webinars / Meetings / CPD

| | |
|----------|---|
| Podcasts | <ul style="list-style-type: none"> • The Nursing Handover Podcast • Nursing Standard Podcasts • What Makes a Nurse? • The MedicsPro Podcast • Nursing Matters • Welcome to the BJN Podcast • Why we care • EBN podcast • This Is Nursing • Maroon Mindset • Teach me, I'm a Nurse • Past Caring • RCGP eLearning podcast • The BMJ Podcast • Primary Care Network podcasts • The Professional Support Unit's Pandemic Podcast • How can public health nurses help deliver the Healthy Child Programme this winter? • Talking GP |
| Research | <ul style="list-style-type: none"> • Science Daily • Multimorbidity / multiple long-term conditions (MLTC) |
| Freebies | <ul style="list-style-type: none"> • Blue Light Card |
| Other | |



Thank you for reading Future Proof Health's weekly news!
If you missed past issues, please click [here](#) to view them

More information can be found on our website, [here](#)



Don't forget to like us on [Facebook](#) & Follow us on [Twitter](#)