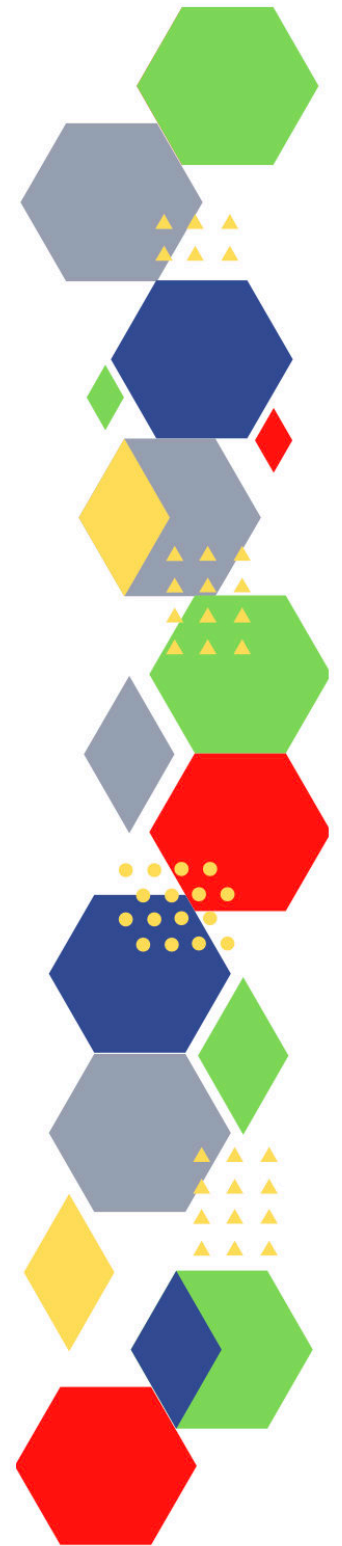




Future Proof Health Presents

Weekly News

23rd November 2022



Communication	
Communication with Patients	
Communication within Teams	<ul style="list-style-type: none"> • About the Guardian Mentor role
Consent	<ul style="list-style-type: none"> • Gillick competency and Fraser guidelines • ReSPECT for healthcare professionals • Overview Advocacy services for adults with health and social care needs Guidance NICE
People and Personal Development	
Personal / People Development / Leadership	<ul style="list-style-type: none"> • Accountability and delegation in practice • NHS Leadership Academy (createsend1.com) • Mary Seacole (createsend1.com) • Rosalind Franklin (createsend1.com)
NHS Employers / HR / NHS Pension	<ul style="list-style-type: none"> • NHS Employers • Pensions Online • Why stick with the scheme? (rcn.org.uk)
Health, Safety & Security	
	<ul style="list-style-type: none"> • NPSA • Control of Substances Hazardous to Health (COSHH) • Book now: limited places remaining at HSE's Health and Work Conference 2022 (govdelivery.com)
Gov UK - NHS	
CQC	<ul style="list-style-type: none"> • GP mythbusters • CQC is changing: Upcoming webinar series (govdelivery.com) • PEOPLE FIRST: a response from health and care leaders to the urgent and emergency care system crisis • Tackling inequality through our strategy • Issue 10: Unsafe management of sepsis

Vaccines / Medications / Prescribing	<ul style="list-style-type: none"> • Protocol for ordering, storing and handling vaccines • A Competency Framework for all Prescribers • Non-medical prescribing • The Human Medicines Regulations 2012 • RCN - Non-medical prescribers • Royal Pharmaceutical Society • Standards for prescribing • Clinical Negligence Scheme for General Practice • Home - electronic medicines compendium (emc) • Drug shortages - live tracker MIMS online • Developing a support pathway for non-medical prescribers in primary care (cogora.com)
MIMS	<ul style="list-style-type: none"> • Prescribing Update
Antibiotic steward-ship / Anti-microbial resistance	<ul style="list-style-type: none"> • Antibiotic awareness toolkit launched MIMS online • Antibiotic Amnesty and World Antimicrobial Awareness Week (who.int)
Health Protection Review	
Drug / Device Alerts (MHRA)	<ul style="list-style-type: none"> • Drug Safety Update (mhradrugsafety.org.uk)
Emergency Situations	<ul style="list-style-type: none"> • Resuscitation Council UK
Infection Control / Infection Statics	<ul style="list-style-type: none"> • NHS England » National infection prevention and control • Infection Prevention & Control Champions Network and Me (qni.org.uk)
Safe Guarding	<ul style="list-style-type: none"> • Female genital mutilation (FGM) • PREVENT • Child protection system in the UK • Safeguarding Adults • Safeguarding children: detailed information • Domestic abuse victim services, England and Wales: 2022 (www.gov.uk) • Dudley Financial Abuse Alliance - September 2022 (govdelivery.com) • Wolverhampton Safeguarding Together - Training Update November 2022
Practice Policies: Practice Management / Accountability Duty of Candour	

Audit	
Information Governance / Record Keeping	<ul style="list-style-type: none"> • Guide to Data Protection • Supporting general practice – Medical record keeping • PRSB standards now easier to use • An update from NHS England on Accelerating Citizen Access to GP Data (1 November 2022) - NHS Digital • GP online services toolkit (createsend1.com) • general practice readiness checklist (createsend1.com) • Enhanced Access (phe.gov.uk)
Quality & Service Improvement	
Quality, Service & Improvement	<ul style="list-style-type: none"> • The PRSB • General Practice Assessment Questionnaire (GPAQ) • Healthwatch • NHS Five Year Forward View • General Practice Forward View • NMC • Dr Jon Griffiths Blog • NHS Confed • Future Health Report ICS
Roles in General Practice Including AHP	<ul style="list-style-type: none"> • Standards for nursing associates • GP mythbuster 57: Health Care Assistants in General Practice • NHS England » Allied Health Professions • NHS England » Paramedics in general practice • Heath Coaching - Have your say!
Revalidation	
Personal Practice & Development	
Practice Management	<ul style="list-style-type: none"> • Institute of General Practice Management • Practice Index • Home - NHS Resolution
EMIS / System One	<ul style="list-style-type: none"> • Black Country ICB Engage comms • receive electronic correspondence in error or have problems viewing it, should notify GOSH (createsend1.com) • NHS England » Coding unpaid carers – SNOMED CT
Recruitment Employment / Retirement / Legacy Nursing	

<p>NHS Self Care & Resilience</p>	<ul style="list-style-type: none"> • Samaritans • Mental Health at work • Calm • Supporting our NHS people • The Hub :: Black Country Healthcare NHS Foundation Trust • RESPECT for Health Professionals • FutureNHS Collaboration Platform - FutureNHS Collaboration Platform (createsend1.com) • Every Mind Matters (createsend1.com) • Mental Health Helpline for Urgent Help - NHS (createsend1.com) • support available for you and your teams (createsend1.com) • confidential coaching (createsend1.com) • NHS England » Staff mental health and wellbeing hubs (createsend1.com) • Practitioner Health service (createsend1.com) • Menopause Self Care Aware Fact Sheet (list-manage.com)
<p>Practice Transformation / Innovation Agency</p>	<ul style="list-style-type: none"> • Health and Care Act 2022: combined impact assessments - GOV.UK (www.gov.uk) • collaborative practice webinar (createsend1.com)
<p>Future of NHS / General Practice / NHS Recovery</p>	<ul style="list-style-type: none"> • NHS England • NHS England » Primary care • NHS mandate 2022 to 2023 • NHS England » NHS cuts 18-month waits as staff contend with busiest October ever • GP online services toolkit: Introduction (rcgp.org.uk) • Standard general medical services contract (england.nhs.uk) • General medical services variation notice (england.nhs.uk) • Personal medical services agreement (england.nhs.uk) • Personal medical services variation notice (england.nhs.uk) • NHS England » Alternative provider medical services contract – November 2022 • NHS England » Alternative provider medical services variation notice – November 2022
<p>ICS / ICB / ICP / PCN Commissioning</p>	<ul style="list-style-type: none"> • Integrated care (england.nhs.uk) • Place-based partnerships explained The King's Fund (kingsfund.org.uk) • NHS England » Delivering a quality public health function in integrated care boards • Read the report (kingsfundmail.org.uk) • Place-based partnerships explained The King's Fund (kingsfund.org.uk) • Primary care networks: three years on NHS Confederation

QOF / PHOF / DES / LES / NHS Contract / CQRS / CQUIN	<ul style="list-style-type: none"> • guidance and an accompanying letter to support the consistent use of SNOMED CT codes (createsend1.com) • NHS Long Term Plan objectives (createsend1.com)
Leadership / Innovation	<ul style="list-style-type: none"> • Leadership Academy
Greener NHS	<ul style="list-style-type: none"> • Greener Allied Health Professional hub (england.nhs.uk) • Achieving a step change in the health protection response to climate change - UK Health Security Agency (blog.gov.uk) (outlook.com) • School for Change Agents (live.com)
Personalised Care	
Personalised Care / Self Care / Social Prescribing / Health Coaching	<ul style="list-style-type: none"> • Self Care forum • Personalised Care Institute • Personalised care • Social Prescribing Academy
Group consultation	
Working Differently	
Shared Decision Making	<ul style="list-style-type: none"> • Personalised Care Institute
Equality & Diversity	
Equality & Diversity	<ul style="list-style-type: none"> • Public Health Profiles • Health equity and the UK Health Security Agency - UK Health Security Agency (blog.gov.uk) (outlook.com)
Inclusion Health	<ul style="list-style-type: none"> • Health Creation Academic Network • Inequality on the inside • Find out more. (qni.org.uk)
Poverty / Homelessness	<ul style="list-style-type: none"> • Crisis • This is Poverty • Poverty and the health and care system The King's Fund (kingsfund.org.uk)
Population Health / Health Communities	<ul style="list-style-type: none"> • Joining the dots for population health The King's Fund (kingsfund.org.uk) • Creating spaces for community and patient wellbeing • Read the blog (kingsfundmail.org.uk) • Two weeks to go: book your place at our population health event (kingsfundmail.org.uk)

Thrive Into Work	<ul style="list-style-type: none"> • Thrive into Work • Thrive into Work Referral form
Health Inequalities	<ul style="list-style-type: none"> • NHS News • NHS England » Health and justice framework for integration 2022-2025: Improving lives – reducing inequality • Read the report (kingsfundmail.org.uk) • Read the report (outlook.com)
Trans / Non-binary Health / LGBTQ+	<ul style="list-style-type: none"> • LGBT Foundation • Surgery staff grab sheet (squarespace.com) • Trans inclusive organisations — TransActual • TransActual - Healthcare • CliniQ
Migrant / Refugee Health	<ul style="list-style-type: none"> • THE REFUGEE & MIGRANT CENTRE
Traveller / Gypsy / Romany Health	<ul style="list-style-type: none"> • Gypsy Roma and Traveller History and Culture The Traveller Movement • Friends, Families and Travellers (gypsy-traveller.org)
Veterans Health	<ul style="list-style-type: none"> • The first call for help takes courage • apply for the RCGP's Veteran Friendly accreditation (createsend1.com) • UK armed forces veterans: Census 2021 in England and Wales (outlook.com)
Voluntary / Charity	<ul style="list-style-type: none"> • The Charity Commission - GOV.UK - United Kingdom (bing.com)
Management of Emergency Situations	
111 / Emergency Care	<ul style="list-style-type: none"> • Why have ambulance waiting times been getting worse? - The Health Foundation • 2-hour Urgent Community Response Performance metrics for September 2022 (provisional), and August 2022 (final) (outlook.com) • Why have ambulance waiting times been getting worse? - The Health Foundation • Ambulance Quality Indicators Systems Indicators for October 2022 (outlook.com) • Integrated Urgent Care Aggregate Data Collection (IUC ADC) for September 2022 (Official statistics) (outlook.com) • Ambulance Quality Indicators Clinical Outcomes for June 2022 (outlook.com) • Provisional Monthly Hospital Episode Statistics for Admitted Patient Care, Outpatient and Accident and Emergency data, April 2022 – September 2022 (outlook.com) • Provisional Accident and Emergency Quality Indicators for England, September 2022, by provider (outlook.com) • Integrated Urgent Care Aggregate Data Collection (IUC ADC) – for October 2022 (Provisional statistics) (outlook.com) • Remote health advice: weekly bulletins for 2022 (outlook.com) • Emergency department: weekly bulletins for 2022 (outlook.com) • National ambulance syndromic surveillance: weekly bulletins 2022 (outlook.com)

Management of Emergency Situations	
First Contact	<ul style="list-style-type: none"> • Supporting general practice – Common pitfalls • Paediatrics for Primary Care (and anyone else) (gppaedstips.blogspot.com)
Red Flags	
Sepsis	<ul style="list-style-type: none"> • Sepsis: recognition, diagnosis and early management • Sepsis guidance implementation advice for adults • Sepsis in Children • Sepsis Trust • quick SEPSIS RELATED ORGAN FAILURE ASSESSMENT • Issue 10: Unsafe management of sepsis
Therapeutic Monitoring	
OSCE	<ul style="list-style-type: none"> • Geeky Medics • Abdominal Examination - Demonstration - YouTube • Cardiovascular Examination - Demonstration - YouTube • Respiratory Examination - Demonstration - YouTube • Physical Diagnosis Skills - University of Washington School of Medicine
Role Specific	
Cervical Cytology	<ul style="list-style-type: none"> • Guide to the interim assessment • British Association for Cytopathology • Lab Tests Online • Cytology Newsletter
Ear Care	<ul style="list-style-type: none"> • Ear Care Centre • RNID
Wound Management / Compression	<ul style="list-style-type: none"> • Microworld • Tissue Viability Society • The BLS • Article (jcn.co.uk) • Wound management in people with dark skin tones (cogora.com) • Wound Care Alliance Webinar Series (mahealthcareevents.co.uk)
Minor Surgery	<ul style="list-style-type: none"> • How to demonstrate outstanding practice in minor surgery - QCS Blog • GP mythbuster 49: Consent for minor surgery in GP ... (bing.com) • CQC Essentials: Consent for minor surgery in GP surgeries

Obtaining Samples / Results	<ul style="list-style-type: none"> • Lab Tests Online
Health Promotion / Health Screening	
Health Promotion / Population Health	<ul style="list-style-type: none"> • Better Health • SHAPE Strategic Health Asset Planning and Evaluation (shapeatlas.net) • Health Index for England: 2015 to 2020 (outlook.com) • Health Protection Report volume 16 (2022) (outlook.com) • How health has changed in your local area: 2015 to 2020, Office for National Statistics, 9 November 2022 (kingsfundmail.org.uk)
Health Screening	<ul style="list-style-type: none"> • PHE Screening
PHE / OHID / UKHSA	<ul style="list-style-type: none"> • Knowledge & Library Services • Campaign Resources • Public Health Profiles • Health Publications • Health Profile for England 2021 • English indices of deprivation 2019 • The UK Public Health Rapid Support Team - A renewed commitment to tackling infectious diseases - UK Health Security Agency (blog.gov.uk) (outlook.com) • YouTube channel (outlook.com) • Health Index for England: 2015 to 2020, Office for National Statistics, 9 November 2022 (kingsfundmail.org.uk)
NHS Health Check	<ul style="list-style-type: none"> • NHS Health Check
UK GOV Flu / Covid / Bird Flu	<ul style="list-style-type: none"> • Coronavirus (Covid-19) infection survey, UK: 4 November 2022 (kingsfundmail.org.uk) • blog on the move to weekly reporting (outlook.com) • Avian influenza in wild birds - GOV.UK (outlook.com) • Coronavirus (COVID-19) testing behaviours and outcomes by socio-demographic characteristics, England: September 2020 to November 2021 (outlook.com) • National flu and COVID-19 surveillance reports: 2022 to 2023 season - GOV.UK (www.gov.uk) • Coronavirus (COVID-19) Infection Survey, UK: 11 November 2022 (outlook.com) • Consensus statements and medium-term projections on COVID-19 (outlook.com)
UK GOV - General Practice	<ul style="list-style-type: none"> • Patients Registered at a GP Practice, November 2022 (outlook.com) • GP out-of-hours syndromic surveillance: weekly bulletins for 2022 (outlook.com) • GP in hours: weekly bulletins for 2022 (outlook.com)

UK GOV - Secondary Care	<ul style="list-style-type: none"> • Waiting times for suspected and diagnosed cancer patients, Q2 2022/23 (Provider based) (outlook.com) • Provisional monthly Hospital Episode Statistics for admitted patient care, outpatient and accident and emergency data, April 2022 - September 2022, NHS Digital, 10 November 2022 (kingsfundmail.org.uk) • A&E attendances and emergency admissions for October 2022 (outlook.com) • Waiting times for suspected and diagnosed cancer patients for September 2022 (outlook.com) • NHS Cancelled Elective Operations, Q2 2022/23 (outlook.com) • Referrals for first consultant-led outpatient appointments for September 2022 (outlook.com) • Waiting times for suspected and diagnosed cancer patients, Q2 2022/23 (Commissioner based) (outlook.com) • Diagnostic waiting times and activity for September 2022 (outlook.com) • Summary Hospital-level Mortality Indicator (SHMI), Deaths associated with hospitalisation, England, July 2021 – June 2022 (outlook.com)
UK GOV Deaths / Suicide / Palliative Care	<ul style="list-style-type: none"> • Excess mortality in England and English regions (kingsfundmail.org.uk) • Excess mortality: bespoke analyses - GOV.UK (kingsfundmail.org.uk) • NHS Continuing Healthcare and NHS-funded Nursing Care for Q2 2022/23 (outlook.com) • Weekly all-cause mortality surveillance: 2022 to 2023 - GOV.UK (outlook.com)
UK GOV - LTC	
Surveillance / Syndromic Surveillance	<ul style="list-style-type: none"> • Syndromic surveillance: systems and analyses - GOV.UK (www.gov.uk)
UK GOV Infectious Disease Monitoring / NOIDS	<ul style="list-style-type: none"> • Public health control and management of diphtheria in England • Laboratory confirmed cases of pertussis in England: January to March 2022 • Travel-associated infections in England, Wales and Northern Ireland: 2020 and 2021 • Notifiable diseases: causative agents reports for 2022 - GOV.UK (outlook.com) • Reports of cases of TB to UK enhanced tuberculosis surveillance systems, 2000 to 2021 (outlook.com) • Notifiable diseases: last 52 weeks (outlook.com) • Notifiable diseases: weekly reports for 2022 (outlook.com) • Notifiable diseases: causative agents reports for 2022 - GOV.UK (kingsfundmail.org.uk) • National norovirus and rotavirus report, week 45 report: data up to week 43 (30 October 2022) (kingsfundmail.org.uk) • Reports of cases of tuberculosis to enhanced tuberculosis surveillance systems: UK, 2000 to 2021, UK Health Security Agency, 10 November 2022 (kingsfundmail.org.uk)
UK GOV - Mental Health	
Addiction/Smoking	<ul style="list-style-type: none"> • Drink Coach • Stop smoking interventions and services

Immunisation / Travel Health

- [Joint Committee on Vaccination and Immunisation](#)
- [Immunisation against infectious disease](#)
- [West Midlands Immunisation Service](#)
- [Vaccination of individuals with uncertain or incomplete immunisation status](#)
- [Immunisation Queries: Immunisation information for Health Care Services within the West Midlands area](#)
- [Immunisation](#)
- [free resources. \(createsend1.com\)](#)
- [Get vaccinated and boost your winter protection - UK Health Security Agency \(blog.gov.uk\) \(outlook.com\)](#)
- [Answering questions on monkeypox vaccination - UK Health Security Agency \(blog.gov.uk\) \(outlook.com\)](#)
- [Shingles vaccine coverage \(England\): annual report of the financial year 2021/22 \(outlook.com\)](#)
- [Herpes zoster \(shingles\) immunisation programme 2021 to 2022: evaluation reports - GOV.UK \(outlook.com\)](#)

Flu	<ul style="list-style-type: none"> • Flu and flu vaccinations • The national influenza immunisation programme 2021 to 2022 • Flu vaccines for the 2021 to 2022 season poster • Appendix C: Flu vaccinator competency assessment tool • Healthcare assistants and flu vaccinations • New vaccine marketing campaign urges millions to boost their immunity this winter
Covid Vaccine	<ul style="list-style-type: none"> • Greenbook COVID-19 chapter 14a • COVID-19 Vaccine Moderna e-learning now available • GP COVID-19 vaccine dashboard • Updates made to the COVID-19 vaccination learning programme
Children	
Adults	<ul style="list-style-type: none"> • Immunisation patient group direction (PGD) templates • Shingles immunisation programme: introduction of Shingrix® letter
Vaccine Update	<ul style="list-style-type: none"> • Vaccine update: issue 331, August 2022 - GOV.UK (www.gov.uk) • Vaccine update: issue 329, May 2022 - GOV.UK (www.gov.uk) • Vaccine update: issue 328, May 2022, Shingrix® special edition - GOV.UK (www.gov.uk) • Vaccine update: issue 327, May 2022, SCID, TB and BCG special edition (www.gov.uk) • Vaccine update: issue 326, April 2022, HPV special edition - GOV.UK (www.gov.uk) • Vaccine update: issue 325, April 2022, flu special edition - GOV.UK (www.gov.uk)
PGD	<ul style="list-style-type: none"> • Hib/MenC: patient group direction (PGD) template - GOV.UK (www.gov.uk)

<i>Continuation of Immunisation / Travel Health</i>	
Travel Health	<ul style="list-style-type: none"> • Travel Health Pro • Fit for Travel • Travel Health • Jane Chiodini • Corona.Help
<i>Mental Health / Learning Disability / Disability</i>	
Mental Health	<ul style="list-style-type: none"> • Mental Health • Mental Health UK • Mind • Place2b • Rethink Mental Illness • Young Minds • Every Mind Matters • Calm • Headspace • Better Health - Every Mind Matters - Resources • ZSA Training • NHS > Mental Health • Read the report (kingsfundmail.org.uk) • Read the framework (kingsfundmail.org.uk) • NHS England » Supporting children and young people with mental health needs in acute paediatric settings • Mental health services monthly statistics, performance August, provisional September 2022, NHS Digital, 10 November 2022 (kingsfundmail.org.uk) • Physical Health Checks for People with Serious Mental Illness Q2 2022/23 (outlook.com) • Psychological Therapies: reports on the use of IAPT services, England, August 2022 Final including a report on the IAPT Employment Advisers pilot (outlook.com)

<p>Learning Disability</p>	<ul style="list-style-type: none"> • Learning Disabilities • Learning Disability England • Mencap • Bild • Autism • The Oliver McGowan Mandatory Training on Learning Disability and Autism e-learning (createsend1.com) • Mythbuster: 'Autism rarely affects girls – she's probably just anxious' (cogora.com) • Best practice in annual health checks for people with a learning disability (October) (createsend1.com) • Experiences of being in hospital for people with a learning disability and autistic people - Care Quality Commission (cqc.org.uk) • Educational experiences of children and young people with special educational needs and disabilities in England: February to May 2022 (outlook.com) • More information (lnks.gd)
<p>Disability (Inc. hearing and visual)</p>	<ul style="list-style-type: none"> • Disability Rights UK • Disability Matters • RNID - National hearing loss charity • Spokzpeople • Sight Loss Data Tool RNIB • Sound Magazine Boots Hearingcare • Disability History Month (outlook.com)
<p>From Cradle to...</p>	
<p>Infant Health</p>	<ul style="list-style-type: none"> • Tommys • First Steps Nutrition Trust • Bliss • ICON Toolkit • Sandwell - 7 Minute Briefing - ICON within Primary Care • Walsall - Sleep Awareness • Toilet Training • Understanding your child's behaviour • Understanding your child's emotions • Sandwell - BC - ICB Primary Care - 7 minute briefing

Child Health	<ul style="list-style-type: none"> • Unicef • Health Professional Academy • Premature Babies • Child and Maternal Health • Women and Child First • Child Health Information Services • Place2b • Childhood eczema • Childhood asthma • Paediatrics for Primary Care (and anyone else) (gppaedstips.blogspot.com) • 5 ways to protect your under-5's this winter - UK Health Security Agency (blog.gov.uk) (outlook.com) • Final report by the Commission on Young Lives • National Child Measurement Programme, England, 2021/22 school year (kingsfundmail.org.uk) • NHS England » Paediatric medicine renal service specification • Read the framework (kingsfundmail.org.uk) • Children and Young People Eating Disorder Collection Q2 2022/23 (outlook.com)
Adolescent Health	<ul style="list-style-type: none"> • Adolescent Health Programme • Society for Adolescent Health and Medicine • Young Minds
Mens Health	<ul style="list-style-type: none"> • Mens Health Forum • Mens Health Month • Mens health.org • Mens Health UK • Men and mental health • Men's Mental Health Awareness • Prostate Cancer UK • Orchid Fighting Male Cancer • Prostate Cancer UK Facebook Page • Movember

<p>Women's Health</p>	<ul style="list-style-type: none"> • Womens Health Concern • Well Being of Women • Coppa Feel • Menopause Matters • The Menopause Charity • Royal College of Obstetricians and Gynaecologists - Guidelines • Pelvic Partnership • CRUK - Womens Cancer • Breast Cancer Now • Foundation for Women's Cancer • Eve Appeal • Ovarian.Org • Jo's Trust • Well Spring • Know your Lemons • British Menopause Society - <u>www.thebms.org.uk</u> • NHS - <u>www.nhs.uk/conditions/menopause</u> • Henpicked - <u>henpicked.net</u> • The Menopause Exchange - <u>www.menopause-exchange.co.uk</u> • Women's Health Concerns - <u>www.womens-health-concern.org</u> • Menopause Matters - <u>www.menopausematters.co.uk</u> • The Daisy Network - <u>www.daisynetwork.org</u> • Dr Louise Newson's Menopause Doctor - <u>www.menopausedoctor.co.uk</u> • Manage My Menopause - <u>www.managemymenopause.co.uk/menopause-advice</u> • Menopause Support - <u>menopausesupport.co.uk</u> • Target Ovarian Cancer Pathfinder 2022 • CPD module: Diagnosis and management of endometriosis (<u>cogora.com</u>)
<p>The Older Population</p>	<ul style="list-style-type: none"> • BGS • Ageing Better • Delirium Champions - YouTube

Carers / Social Care / Care Homes	<ul style="list-style-type: none"> • The Care Provider Alliance • Skills for Care • The Care Workers' Charity • Supporting Adult Carers • The Care UK • See the resources (phe.gov.uk) • Adult social care update • Care Home News - The Latest Social Care Industry Sector News (thecareruk.com) • Read Issue 122 of The Carer Digital Now! (ourmailsender4.com) • Overview Advocacy services for adults with health and social care needs Guidance NICE • Read the blog (outlook.com) • Read the survey (outlook.com)
Young Carers	
Complex Needs	
Family Planning & Sexual Health	
Family Planning	<ul style="list-style-type: none"> • Faculty of Sexual and Reproductive Healthcare Education and Training
Reproductive	<ul style="list-style-type: none"> • Tommys • NHS England » 2022/23 community pharmacy contractual framework (CPCF) national clinical audit: Valproate audit
Sexual Health / Sexual Abuse	<ul style="list-style-type: none"> • Sexual and Reproductive Health Profiles • FSRH Education & Training • STIs: Get tested, get treated - UK Health Security Agency (blog.gov.uk) (outlook.com) • Getting tested for an STI: Your guide to how it works - UK Health Security Agency (blog.gov.uk) (outlook.com) • Read the report (outlook.com)
Maternity / Neonate health	

Care of Patients with Long Term Conditions

LTC	<ul style="list-style-type: none"> • Physical Activity for the Prevention and Management of Long-Term Conditions • Health A to Z
Diabetes & Pre-Diabetes	<ul style="list-style-type: none"> • Mumoactive • The mySugr App • PCDS Entry level module series - Foot Check • Type 2 diabetes in adults: management • NovoRapid FlexPen out of stock (outlook.com) • Diabetes care Independent Nurse • World Diabetes Day (outlook.com) • SilverCloud - Online support for people with diabetes and mental health conditions (blackcountryics.org.uk) • Diabetes management - healthcare awareness courses (mailchi.mp) • CPD: Gaining back control of type 2 diabetes post-pandemic (cogora.com) • NHS England » The six principles of good peer support for people living with Type 1 diabetes
Respiratory	<ul style="list-style-type: none"> • Spirometry: step by step • ARTP • British Lung Foundation • The Primary Care Respiratory Society • Respiratory – Respimat® patient resources Boehringer Ingelheim (boehringer-ingelheim.com) • Respiratory News & Advice (nursinginpractice.com) • Dudley pulmonary rehab - Template PI (dght.nhs.uk) • RSV Toolkit
COPD	<ul style="list-style-type: none"> • Right Breathe • GOLD COPD 2022 strategy Independent professional body guideline Guidelines
Asthma	<ul style="list-style-type: none"> • Asthma UK • Asthma: diagnosis, monitoring and chronic asthma management • Global Initiative for Asthma • British guideline on the diagnosis and pharmacological management of asthma in children • We know it's tough at the moment (engagingnetworks.app) • Your home and your lungs Asthma + Lung UK (blf.org.uk) • Get in touch (engagingnetworks.app)
Hypertension	<ul style="list-style-type: none"> • British Heart Foundation • Blood Pressure UK • Hypertension in adults: diagnosis and management • Hypertension in adults: diagnosis and treatment • Hypertension: symptoms to look out for and treatment options (rcni.com)

Continuation of Long Term Conditions

CVD/AF	<ul style="list-style-type: none"> • QRISK®3-2018 risk calculator • Heart Rhythm Alliance • CVD risk assessment and management • NHS lipid management pathway NHS guideline Guidelines • Cardiovascular disease in England The King's Fund (kingsfund.org.uk) • Read the report (outlook.com)
Heart Failure	<ul style="list-style-type: none"> • British Heart Foundation • British Society Guidelines
Cancer / Oncology	<ul style="list-style-type: none"> • Surviving Thyroid Cancer • Help Us Help You - Lung Cancer Symptoms • Breast Cancer Now • Macmillian • Bowel Cancer UK • Brain Trust • CRUK • Action Cancer • Foundation for Women's Cancer • NHS England » Cancer • Mouth cancer rates hit record high (kingsfundmail.org.uk) • Abdominal and Urological Symptoms of Cancer Campaign (phe.gov.uk) • National Cancer Patient Experience Survey (cmail19.com) • NHS England » NHS catching more cancers earlier than ever before • Mouth Cancer Action Month Home Oral Health Foundation (dentalhealth.org)
Chronic Kidney Disease	<ul style="list-style-type: none"> • Kidney.Org • Kidney Quality Improvement Partnership
Liver Disease	<ul style="list-style-type: none"> • British Liver Trust • Liver Research • BRITISH ASSOCIATION FOR THE STUDY OF THE LIVER • LIVERnORTH • LIVER DISEASE AND CIRRHOSIS

Continuation of Long Term Conditions

Blood Disorders	<ul style="list-style-type: none"> • Blood Cancer UK • UK Thalassaemia Society • The ITP Support Association • UK-ITP Paediatric ITP Registry • The Haemophilia Society • UK MDS Forum • Pernicious Anaemia Society • Haemochromatosis UK
G.I	<ul style="list-style-type: none"> • GIST Cancer UK • Pernicious Anaemia Society • Gastrointestinal Nursing Conference - Programme (mahealthcarevents.co.uk)
ENT	
G.U	
ME / CFS / Fibromyalgia	<ul style="list-style-type: none"> • ME Association • ME Research • Action for M.E • Fibromyalgia Action UK • Fibromyalgia UK • Home - Fibromyalgia Awareness UK (fibroawarenessuk.org) • Fibromyalgia - Symptoms, diagnosis and treatment BMJ Best Practice • Fibromyalgia - The Brain Charity
Neurological Conditions	<ul style="list-style-type: none"> • The Brain Tumour Charity • Narcolepsy.Org • ACNR • MS Society UK Information, research and support Multiple Sclerosis Society UK • Home MS Trust

Continuation of Long Term Conditions

<p>Musculoskeletal Conditions</p>	<ul style="list-style-type: none"> • Rheumatology • National Axial Spondyloarthritis Society • Musculoskeletal health • Musculoskeletal health: 5 year prevention strategic framework • Faculty of Occupational Medicine • Guide to embedding your first contact physiotherapy service • NICE recommends adapted shoes for people with severe osteoarthritis News News NICE
<p>Endocrine Disorders / Metabolic Disorders</p>	<ul style="list-style-type: none"> • Society for Endocrinology • Turner Syndrome Support Society • Thyroid Eye Disease • British Thyroid Foundation • Thyroid UK • The Pituitary Foundation • Addisons Disease • Parathyroid UK • The Royal Osteoporosis Society • Metabolic Support UK
<p>Frailty</p>	<ul style="list-style-type: none"> • Recognising frailty • Identifying frailty • CLINICAL FRAILTY SCALE
<p>Dementia / Alzheimers</p>	<ul style="list-style-type: none"> • Dementia UK • Age UK - Understanding Dementia • Delirium Champions • Alzheimers Society • NHS England policy template 3 - dementia • The role of the nurse in screening people with suspected dementia (independentnurse.co.uk)

Continuation of Long Term Conditions

Dermatology	<ul style="list-style-type: none"> • British Association of Dermatologists • Eczema • The British Skin Foundation • Acne vulgaris: management • The Primary Care Dermatology Society • Acne.org • Allergy UK • Urticaria • Hives • Sunburn • Causes of cancer and reducing your risk • What is Rosacea? • Rosecea • The Rosacea Forum • Herpes Viruses Association • Shingles • Fungal Skin Infection - Foot • The Psoriasis Association • National Psoriasis Foundation • Melanoma • Skin Health Information • British Association of Plastic Reconstructive and Aesthetic Surgeons - Procedure Guides • Warts and verrucae • Pigmented skin changes - Registration (gotowebinar.com) • NHS England » Referral optimisation for people with skin conditions • referral optimisation for patients with skin conditions (createsend1.com) • digital images, (createsend1.com)
Allergy / Auto-immune / Genetic Conditions	<ul style="list-style-type: none"> • Allergy UK • British Society for Rheumatology • Addisons Disease

<i>Continuation of Long Term Conditions</i>	
Obesity	<ul style="list-style-type: none"> • Obesity UK • Bariatric surgical procedures, 2021/22 (final) and Q1 2022/23 (provisional) – National Obesity Audit, NHS Digital, 10 November 2022 (kingsfundmail.org.uk)
Pain Management	<ul style="list-style-type: none"> • Pain Concern
Osteoporosis / Falls	<ul style="list-style-type: none"> • General practice tool could help prevent serious falls, study shows (cogora.com)
Genomics	
Multi-Morbidity	<ul style="list-style-type: none"> • Multimorbidity • Multimorbidity / multiple long-term conditions (MLTC)
Minor Illness / First Contact Assessment / OSCE	<ul style="list-style-type: none"> • Fact Sheets - Self Care Forum • OSCE Checklists 📄 (mlsend.com) • OSCE Flashcards 🩺 (mlsend.com) • 600+ OSCE Stations ✨ (mlsend.com) • Anatomy Flashcards 🫁 (mlsend.com) • Health A to Z • Symptoms - Nursing in Practice Reference • Geeky Medics - YouTube
Other / Case Studies	
Winter / Summer Pressures	<ul style="list-style-type: none"> • Stay well this winter - messaging for faith leaders (blackcountryics.org.uk) • Hand Washing Toolkit
End of Life Care	
End of Life Care / Bereavement	<ul style="list-style-type: none"> • ReSPECT for healthcare professionals • Hospice UK • article (jcn.co.uk)
Flu / Covid-19 / Monkeypox	
Covid-19	<ul style="list-style-type: none"> • Coronavirus (Covid-19) testing behaviours and outcomes, England: September 2020 to November 2021 (kingsfundmail.org.uk)

<i>Continuation of Flu / Covid-19 / Monkeypox</i>	
Flu	<ul style="list-style-type: none"> • NHS England » Services for the provision of antiviral drugs for the treatment and post-exposure prophylaxis of influenza-like illness (ILI) in at-risk patients including care home residents
Long covid	<ul style="list-style-type: none"> • Your Covid Recovery • Long Term Effects of Covid • Post Covid Syndrome - Long Covid • COVID-19 Yorkshire Rehabilitation Screening Tool • FOM Guidance • Long Covid Toolkit • Find out more (qni.org.uk) • Caring for People with Long Covid (qni.org.uk)
MONKEY POX	<ul style="list-style-type: none"> • Monkeypox Stakeholder and Partner Communications Pack (outlook.com) • 'Answering questions on Monkeypox' (outlook.com) • Monkeypox outbreak: epidemiological overview, 1 November 2022 - GOV.UK (www.gov.uk) (outlook.com) • Monkeypox and vaccine - new messaging and assets (phe.gov.uk) • Monkeypox outbreak: epidemiological overview, 8 November 2022 (outlook.com) • Monkeypox outbreak: epidemiological overview (outlook.com) • Monkeypox : what we know so far (independentnurse.co.uk)

News & Views

<p>Digital News / Remote Consultations</p>	<ul style="list-style-type: none"> • Digital Health News Webinars • Digital Health News • NHS Digital • DigiHealthWell • Public Sector Events, Conferences and Training - Inside Government • Digital Transformation • v Your daily news updates from Digital Health (campaign-archive.com) • Digital Health Networks Newsletter: 7 November 2022 (mailchi.mp) • Your daily news updates from Digital Health (campaign-archive.com) • Digital Transformation Diamonds in Community Nursing (qni.org.uk) • PSNC Newsletter: 14th November (mailchi.mp) • Digital Health News - 10 November 2022 (mailchi.mp) • 1.2 billion visits to NHS website in last 12 months - NHS Digital • Topol Digital Fellowship website (createsend1.com) • three webinars taking place to support the application process (createsend1.com) • TAPR Programme Update: November 2022 (mailchi.mp) • PSNC Newsletter: 11th November (mailchi.mp) • Digital Health Networks Newsletter: 14 November 2022 (mailchi.mp)
<p>Pulse / GP Online / HSJ / NB Medical</p>	<ul style="list-style-type: none"> • GP Online • HSJ • Pulse Today
<p>PSNC News / Pharmacy</p>	<ul style="list-style-type: none"> • National Pharmacy Association • Royal Pharmaceutical Society • Medicines Learning Portal • Specialist Pharmacy Service • PSNC Newsletter: 7th November (mailchi.mp) • NHS England » 2022/23 community pharmacy contractual framework (CPCF) national clinical audit: Valproate audit • PSNC Newsletter: 9th November (mailchi.mp)

<i>Continuation of News & Views</i>	
Primary Care Update / PCC / PPP	<ul style="list-style-type: none"> • Public Policy Projects News • Primary Care Bulletin
Proactive Care	
Health Care Leaders Newsletters	
Kings Fund	<ul style="list-style-type: none"> • The Kings Fund • New report Cardiovascular disease in England (kingsfundmail.org.uk) • Health Management and Policy Alert: 11 November 2022 (kingsfundmail.org.uk)
World Health Organisation	<ul style="list-style-type: none"> • WHO • OpenWHO
IHCT / CCG / STP / Healthier Futures	<ul style="list-style-type: none"> • Black Country & West Birmingham CCG • Dudley Integrated Health and Care • Home :: Black Country Healthcare NHS Foundation Trust • Issue 16 - Black Country Primary Care Brief (sharepoint.com) • Issue 15 - Black Country Primary Care Brief (sharepoint.com) • Issue 14 - Black Country Primary Care Brief (sharepoint.com) • Issue 13 - Black Country Primary Care Brief (sharepoint.com) • Issue 12 - Black Country Primary Care Brief (sharepoint.com) • Issue 11 - Black Country Primary Care Brief (sharepoint.com) • Issue 10 - Black Country Primary Care Brief (sharepoint.com) • Issue 09 - Black Country primary Care Brief (sharepoint.com) • Updated: UKHSA - Urgent public health message regarding Ebola virus outbreak in Uganda and IPC guidance (sharepoint.com) • Message from Mark Axcell & Staff News (20 October 2022) (sharepoint.com) • Staff News • Black Country Communications Toolkit - 11 November 2022 (campaign-archive.com) • Campaigns and toolkits :: Black Country ICB • Newsletters :: Black Country ICS • NHS Midlands 'look ahead grid' for future comms planning can be found here. (google.com)
NHSI / NHSE	
University / Student Nurses	

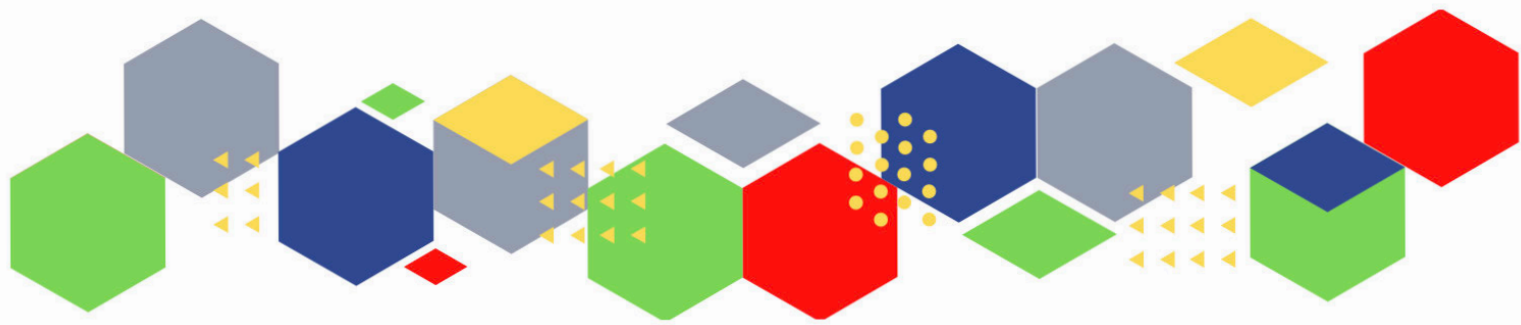
Continuation of News & Views

Medisa / Univadis / Geeky Medics / GP Notebook / Medscape	<ul style="list-style-type: none"> • Medisa • Geeky Medics • Medscape Nurses • GP Notebook
Nurse Guidelines	
The Health Care Leaders Update	<ul style="list-style-type: none"> • Health Care Leader News
The Health Foundation	<ul style="list-style-type: none"> • The Health Foundation
Practice Index	
Innovation Agency	<ul style="list-style-type: none"> • Innovation Agency Exchange
RCN	<ul style="list-style-type: none"> • RCN
Nursing in Practice / Nursing Standard / Independent Nurse	<ul style="list-style-type: none"> • Nursing Times • Practice Nursing - Explore our brand new website • Journal of General Practice Nursing • Nursing Bulletin • Community Bulletin • Independent Nurse News • RCN members vote in favour of strike action (independentnurse.co.uk)
QNI	<ul style="list-style-type: none"> • QNI • Talk To Us © – The Queen's Nursing Institute (qni.org.uk) • QNI news: Join our team free events new publications (mailchi.mp)
NMC	<ul style="list-style-type: none"> • NMC
CMO / CNO	

Nice	<ul style="list-style-type: none"> • NICE • Overview Advocacy services for adults with health and social care needs Guidance NICE
RCGP / BMA / The Lancet	<ul style="list-style-type: none"> • The Lancet • British Medical Journal • Royal College of General Practitioners
Midlands Academic Health Science Network	<ul style="list-style-type: none"> • WMAHSN Network • WMAHSN November 2022 update (mailchi.mp)
Healthwatch	<ul style="list-style-type: none"> • Healthwatch
Other	<ul style="list-style-type: none"> • Patients Association
Free Training / Webinars / Meetings / CPD	
Development / Information and Knowledge	<ul style="list-style-type: none"> • Red Whale Training • Issues & Answers • Issues & Answers - Long Covid Broadcasts • Lymphoedema Conference - Registration now open (mahealthcareevents.co.uk) • 1 and 29 November, 12.30pm – 2pm. Safe, Reliable Processes I and II • 29 November, 12.30pm – 2pm. Safe, Reliable Processes I and II • Watch our series of General Practice webinars • Watch our series of Primary Care Network webinars • Homeless and Inclusion Health meeting – The Queen's Nursing Institute (qni.org.uk) • Care Home Nurses Network Meeting – The Queen's Nursing Institute (qni.org.uk) • Long Covid Nurse Expert Group Meeting – The Queen's Nursing Institute (qni.org.uk) • Infection Prevention and Control Champions Meeting – The Queen's Nursing Institute (qni.org.uk) • Wound Care Alliance Webinar Series (mahealthcareevents.co.uk)

Free to RCN	<ul style="list-style-type: none"> • RCNi events RCNi • RCN Shropshire AGM and learning event Event Royal College of Nursing • RCN Birmingham East, North and Solihull AGM and learning event Event Royal College of Nursing
MIMMs Learning	
Eventbrite	
e-Learning for Health	
Podcasts	<ul style="list-style-type: none"> • The Nursing Handover Podcast • Nursing Standard Podcasts • Nursing Matters • Welcome to the BJN Podcast • Cygnet Health Care Podcast • EBN podcast • This Is Nursing • Teach me, I'm a Nurse • Past Caring • RCGP eLearning podcast • The BMJ Podcast • Primary Care Network podcasts • The Professional Support Unit's Pandemic Podcast • The Next GenCast • New podcast: Stafford Scott on community activism (kingsfundmail.org.uk) • The Role Of Second-generation Basal Insulins And CGM In Optimising Glycaemic Control: The InRange Study (Promotional Content From Sanofi) - GPnotebook Podcast • Pharmacy Technician Coffee Break Conversations: Series Introduction in Pharmacy Technician Coffee Break Conversations (soundcloud.com)
YouTube	<ul style="list-style-type: none"> • NHS England • Black Country Healthcare - YouTube
Future Proof Health Training	<ul style="list-style-type: none"> • Training

<i>Continuation of Free Training / Webinars / Meetings / CPD</i>	
Blogs/Vlogs	<ul style="list-style-type: none"> • Blog NB Medical
BCWB Training Hub	
Evidence based care	
Area Bulletins	
Research	<ul style="list-style-type: none"> • Science Daily • Multimorbidity / multiple long-term conditions (MLTC) • National Institute for Health and Care Research
Freebies	<ul style="list-style-type: none"> • Blue Light Card
Campagne Links	
Other	



Thank you for reading Future Proof Health's weekly news!

If you missed past issues, please click [here](#) to view them

More information can be found on our website, [here](#)

Don't forget to like us on [Facebook](#) & Follow us on [Twitter](#)

