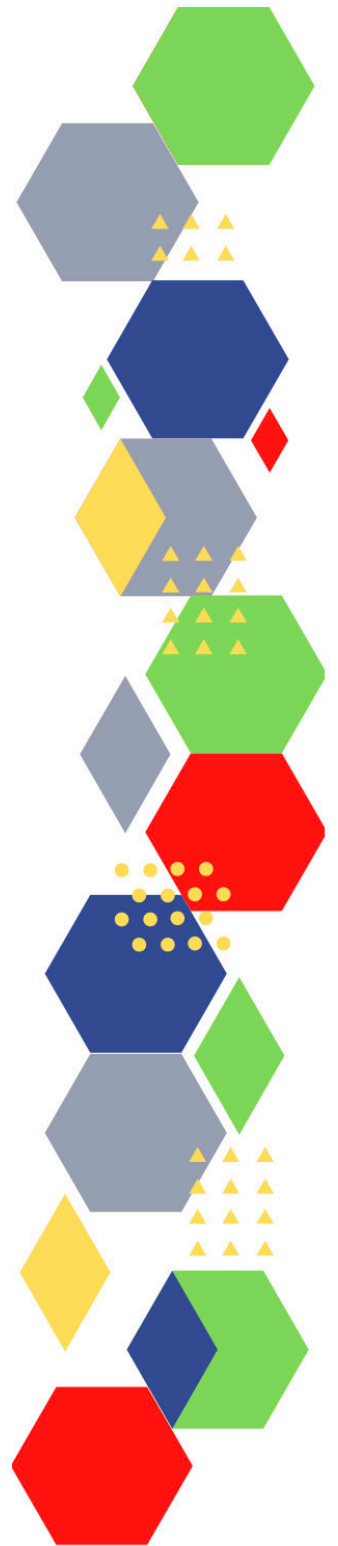




Future Proof Health Presents

Weekly News

24th March 2022



Communication	
Communication with Patients	
Communication within Teams	
Consent	<ul style="list-style-type: none"> • Gillick competency and Fraser guidelines • CONSENT POLICY • ReSPECT for healthcare professionals
People and Personal Development	
Personal / People Development / Leadership	<ul style="list-style-type: none"> • Accountability and delegation in practice
NHS Employers / HR / NHS Pension	<ul style="list-style-type: none"> • NHS Employers • Pensions Online
Health, Safety & Security	
	<ul style="list-style-type: none"> • NPSA • Control of Substances Hazardous to Health (COSHH) • HSE Weekly Digest eBulletin
Gov UK - NHS	
CQC	<ul style="list-style-type: none"> • GP mythbusters • Examples of outstanding practice for GPs • CQC update for adult social care providers
MIMS	<ul style="list-style-type: none"> • Prescribing Update
Antibiotic steward-ship / Anti-microbial resistance	<ul style="list-style-type: none"> • Antibiotics in sore throat
Drug / Device Alerts (MHRA)	

Vaccines / Medications / Prescribing	<ul style="list-style-type: none"> • Protocol for ordering, storing and handling vaccines • A Competency Framework for all Prescribers • Non-medical prescribing • The Human Medicines Regulations 2012 • RCN - Non-medical prescribers • Royal Pharmaceutical Society • Standards for prescribing • Clinical Negligence Scheme for General Practice • Use of a DOAC in cancer • PPI use and hearing problems in type 2 diabetes
Emergency Situations	<ul style="list-style-type: none"> • The updated National Early Warning Score and its use with suspected Sepsis • Resuscitation Council UK
Infection Control / Infection Statics	
Safe Guarding	<ul style="list-style-type: none"> • Female genital mutilation (FGM) • PREVENT • Child protection system in the UK • Safeguarding Adults • Safeguarding children: detailed information
Practice Policies	
Audit	
Information Governance / Record Keeping	<ul style="list-style-type: none"> • Guide to Data Protection • Supporting general practice – Medical record keeping
Quality & Service Improvement	
Quality, Service & Improvement	<ul style="list-style-type: none"> • The PRSB • General Practice Assessment Questionnaire (GPAQ) • Healthwatch • NHS Five Year Forward View • General Practice Forward View • NMC • Dr Jon Griffiths • NHS Confed • Community health services two-hour urgent community response standard

Roles in General Practice	<ul style="list-style-type: none"> • Standards for nursing associates • GP mythbuster 57: Health Care Assistants in General Practice • Regulation 4: Requirements where the service provider is an individual or partnership • GP mythbuster 106: Primary care first contact practitioners (FCPs)
Revalidation	
Personal Practice & Development	<ul style="list-style-type: none"> • Leading the Way: The role and value of nurses in general practice
Practice Management	<ul style="list-style-type: none"> • Institute of General Practice Management • Practice Index • Are you QOF ready?
NHS Self Care & Resilience	<ul style="list-style-type: none"> • Samaritans • Mental Health at work • Calm • Supporting our NHS people • The Hub :: Black Country Healthcare NHS Foundation Trust
Practice Transformation	<ul style="list-style-type: none"> • Roadmaps to Practice
Future of NHS / General Practice	<ul style="list-style-type: none"> • Public perceptions of the NHS and social care: performance, policy and expectations • NHS Discharge Forum 2022 • NHS England » GP Contract • NHS Long Term Plan » Online version of the NHS Long Term Plan • Young people are the future: how can recruiters encourage more of them to join the NHS workforce? • My Planned Care NHS • Coronavirus » Delivery plan for tackling the COVID-19 backlog of elective care • Pandemic is a wake-up call: Lords Committee calls for new approach to resilience and wellbeing • NHS Backlogs and waiting times
ICS / PCN	<ul style="list-style-type: none"> • Recommendations for Integrated Care Systems • Clinical commissioning groups: transferring the legacy into learning
QOF / PHOF / DES / LES	<ul style="list-style-type: none"> • NHS England » Commissioning for Quality and Innovation (CQUIN): 2022/23 • The General Medical Services Statement of Financial Entitlements (Amendment) Directions 2022

Leadership	<ul style="list-style-type: none"> • Leadership Academy
Personalised Care	
Personalised Care / Self Care / Social Prescribing / Health Coaching	<ul style="list-style-type: none"> • Self Care forum • Personalised Care Institute • Personalised care • Social Prescribing Academy • Self Care Forum Newsletter
Group consultation	
Working Differently	
Shared Decision Making	
Equality & Diversity	
Equality & Diversity	<ul style="list-style-type: none"> • Public Health Profiles
Inclusion Health	<ul style="list-style-type: none"> • Health Creation Academic Network
Poverty / Homelessness	<ul style="list-style-type: none"> • Crisis • This is Poverty
Population Health	<ul style="list-style-type: none"> • Pandemic is a wake-up call: Lords Committee calls for new approach to resilience and wellbeing
Thrive Into Work	<ul style="list-style-type: none"> • Thrive into Work • Thrive into Work Referral form
Health Inequalities	<ul style="list-style-type: none"> • Ideas that change health and care • Health Creation: How can Primary Care Networks succeed in reducing health inequalities? • Equity and endurance: how can we tackle health inequalities this time? • Building public understanding of health and health inequalities
Trans / Non-binary Health / LGBTQ+	<ul style="list-style-type: none"> • LGBT Foundation • NHS population screening: information for trans and non-binary people • Cervical screening for trans men and/or non-binary people • Interim report – Cass Review

Migrant / Refugee Health	<ul style="list-style-type: none"> • THE REFUGEE & MIGRANT CENTRE
Traveller / Gypsy / Romany Health	
Veterans Health	<ul style="list-style-type: none"> • The first call for help takes courage
Management of Emergency Situations	
Management of Emergency Situations	<ul style="list-style-type: none"> • The updated National Early Warning Score and its use with suspected Sepsis
111	
Red Flags	<ul style="list-style-type: none"> • Supporting general practice – Common pitfalls
Sepsis	<ul style="list-style-type: none"> • Sepsis: recognition, diagnosis and early management • Sepsis guidance implementation advice for adults • Sepsis in Children • Sepsis Trust • RCGP: Sepsis • quick SEPSIS RELATED ORGAN FAILURE ASSESSMENT
Therapeutic Monitoring	
OSCE	<ul style="list-style-type: none"> • Geeky Medics • Abdominal Examination - Demonstration - YouTube • Cardiovascular Examination - Demonstration - YouTube • Respiratory Examination - Demonstration - YouTube • Physical Diagnosis Skills - University of Washington School of Medicine

Role Specific	
Cervical Cytology	<ul style="list-style-type: none"> • Guide to the interim assessment • British Association for Cytopathology • Lab Tests Online
Ear Care	<ul style="list-style-type: none"> • Ear Care Centre • RNID • The health and social care approach to winter
Wound Management	<ul style="list-style-type: none"> • Microworld • Tissue Viability Society • The BLS • Fast Five Quiz: Tick Bites • Wound Care Today - Event 2022 • Burns (burn) with paraffin-containing and paraffin-free emollients
Minor Surgery	
Obtaining Samples / Results	<ul style="list-style-type: none"> • Lab Tests Online
Health Promotion / Health Screening	
Health Promotion / Population Health	<ul style="list-style-type: none"> • Better Health • EXi App
Health Screening	<ul style="list-style-type: none"> • PHE Screening
PHE/OHID	<ul style="list-style-type: none"> • Knowledge & Library Services • Campaign Resources • Public Health Profiles • Health Publications • Health Profile for England 2021
NHS Health Check	<ul style="list-style-type: none"> • NHS Health Check

NOIDS / PHE Surveillance / Syndromic Surveillance	<ul style="list-style-type: none"> • Notifications of infectious diseases (NOIDs)
Addiction/Smoking	<ul style="list-style-type: none"> • Drink Coach • Stop smoking interventions and services • Top NHS clinicians demand new 'addiction levy' on gambling industry
Immunisation / Travel Health	
<ul style="list-style-type: none"> • Vaccinations and infections • Joint Committee on Vaccination and Immunisation • Immunisation against infectious disease • West Midlands Immunisation Service • Immunisation information for Health Care Services within the West Midlands area • Vaccination of individuals with uncertain or incomplete immunisation status • WHO vaccine-preventable diseases: monitoring system. 2020 global summary • The Foundations of Immunization: What, Who, When and Why? • Winter Vaccination - Prime phase: Social Media content calendar and assets - 2021 	
Flu	<ul style="list-style-type: none"> • Flu and flu vaccinations • The national influenza immunisation programme 2021 to 2022 • Flu vaccines for the 2021 to 2022 season poster • Appendix C: Flu vaccinator competency assessment tool • Healthcare assistants and flu vaccinations • Flu Campaign Resources 2021/22 • National flu and COVID-19 surveillance reports published

Continuation of Immunisation / Travel Health

Covid Vaccine	<ul style="list-style-type: none"> • Greenbook COVID-19 chapter 14a • Updates made to the COVID-19 vaccination elearning programme • HEE e-LfH COVID-19 vaccination programme launches hit 2 million • COVID-19 Vaccine Moderna e-learning now available • GP COVID-19 vaccine dashboard • Coronavirus (COVID-19) vaccines adverse reactions • COVID-19 vaccination: resources for children and young people aged 12 to 17 years • The Covid-19 vaccination programme • JCVI updates advice on vaccinations for 5 to 11 age group • Coronavirus » Next steps for the NHS COVID-19 vaccination programme planning and delivery • Tell the NHS about coronavirus (COVID-19) vaccinations you've had abroad • Coronavirus » Enhanced Service specification: COVID-19 vaccination • NHS England » NHS bookings open for Spring boosters
Children	
Adults	<ul style="list-style-type: none"> • Immunisation patient group direction (PGD) templates • Shingles immunisation programme: introduction of Shingrix® letter
Vaccine Update	<ul style="list-style-type: none"> • Vaccine update • Vaccine Update Index
PGD	
Travel Health	<ul style="list-style-type: none"> • Travel Health Pro • Fit for Travel • Travel Health • Jane Chiodini • Corona.Help • RCN and NaTHNaC 5th Joint Travel Health Conference

Mental Health / Learning Disability / Disability	
Mental Health	<ul style="list-style-type: none"> • Mental Health • Mental Health UK • Mind • Place2b • Rethink Mental Illness • Young Minds • Every Mind Matters • Calm • Headspace • We Can Talk • Get Your Mind Plan • Feeling low? • Better Health - Every Mind Matters - Resources • ZSA Training • Psychiatry - Medscape
Learning Disability	<ul style="list-style-type: none"> • Learning Disabilities • Learning Disability England • Mencap • Bild • Autism
Disability	<ul style="list-style-type: none"> • Disability Rights UK • Disability Matters • Disabled children and young people up to 25 with severe complex needs: integrated service delivery and organisation across health, social care and education

From Cradle to...

<p>Infant Health</p>	<ul style="list-style-type: none"> • Tommys • First Steps Nutrition Trust • Bliss • NHS App - Baby Buddy • NHS App - Peanut • ICON Toolkit • NICE publishes comprehensive quality standard designed to improve the diagnosis and assessment of fetal alcohol spectrum disorder
<p>Child Health</p>	<ul style="list-style-type: none"> • Unicef • Health Professional Academy • Premature Babies • Child and Maternal Health • Women and Child First • Child Health Information Services • Place2b • Childhood eczema • Childhood asthma • Childrens Commissioner - The Big Answer • Suicide in Children and Young People • Gender Identity - Interim report – Cass Review • Child Health Academy Online Courses & Training • Disabled children and young people up to 25 with severe complex needs: integrated service delivery and organisation across health, social care and education • Tackle chickenpox in 60 seconds
<p>Adolescent Health</p>	<ul style="list-style-type: none"> • Adolescent Health Programme • Society for Adolescent Health and Medicine • Young Minds • Engaging young people in health services research and service design: a new look at ethical issues

Mens Health	<ul style="list-style-type: none"> • Mens Health Forum • Mens Health Month • Mens health.org • Mens Health UK • Men and mental health • Men's Mental Health Awareness • Prostate Cancer UK • Orchid Fighting Male Cancer • Prostate Cancer UK Facebook Page • Men's Voices Event • Movember • Navigating the Patient Journey and Understanding Ongoing Challenges in Metastatic Hormone-Sensitive Prostate Cancer
Women's Health	<ul style="list-style-type: none"> • Womens Health Concern • Well Being of Women • Coppa Feel • Menopause Matters • The Menopause Charity • Royal College of Obstetricians and Gynaecologists - Guidelines • Pelvic Partnership • CRUK - Womens Cancer • Breast Cancer Now • Foundation for Women's Cancer • Eve Appeal • Ovarian.Org • Jo's Trust • Well Spring • Download Report Womens Health Agenda • GPnotebook focus on women's health
The Older Population	<ul style="list-style-type: none"> • BGS • Ageing Better
Young Carers	
Complex Needs	

Carers / Social Care / Care Homes	<ul style="list-style-type: none"> • The Care Provider Alliance • Skills for Care • The Care Workers' Charity • Supporting Adult Carers • Social care 360 • Two thirds of carers do not see lower standards of care during the COVID-19 crisis as acceptable • Adult Social Care Update • NHS England » Case study: providing rapid care to people in their own home rather than going to hospital, through a frailty virtual ward in Leeds
Family Planning & Sexual Health	
Family Planning	<ul style="list-style-type: none"> • Faculty of Sexual and Reproductive Healthcare Education and Training
Reproductive	<ul style="list-style-type: none"> • Tommys
Sexual Health / Sexual Abuse	<ul style="list-style-type: none"> • Sexual and Reproductive Health Profiles • FSRH Education & Training
Maternity / Neonate health	
Care of Patients with Long Term Conditions	
LTC	<ul style="list-style-type: none"> • Chronic Conditions On Demand
Diabetes & Pre-Diabetes	<ul style="list-style-type: none"> • AZ Medical and Educational Goods and Services in Diabetes • Mumoactive • The mySugr App • Foot Check • NICE - algorithm for management of glycaemia (glucose) in type 2 diabetes • PCDS Question Time - NG28- Nice Guidance • Diabetes Education Update: 9 Care Processes and 3 Treatment Targets Tickets, Multiple Dates Eventbrite • FREE eLearning on Diabetes
Respiratory	<ul style="list-style-type: none"> • Spirometry: step by step • ARTP • British Lung Foundation • The Primary Care Respiratory Society • Our top tips for great sleep • Particulate air pollution: effects on mortality

Continuation of Long Term Conditions

COPD	<ul style="list-style-type: none"> • Right Breathe
Asthma	<ul style="list-style-type: none"> • FeNO - Fractional exhaled nitric oxide - for the diagnosis and management of Asthma • Asthma UK • Asthma: diagnosis, monitoring and chronic asthma management • GINA 2021: the missing pieces in the childhood asthma puzzle • GINA: Interim Guidance About COVID-19 & Asthma • Diven's fight for breath
Hypertension	<ul style="list-style-type: none"> • British Heart Foundation • Blood Pressure UK • Hypertension in adults: diagnosis and management • Hypertension in adults: diagnosis and treatment
CVD/AF	<ul style="list-style-type: none"> • QRISK®3-2018 risk calculator • Heart Rhythm Alliance • CVD risk assessment and management • Health matters: preventing cardiovascular disease • Benecol Healthcare Professional Newsletter • Cholesterol management – A scientific case study based approach – CMB TV On Demand • Cardiovascular Masterclass Series - Password: CVM2022
Heart Failure	<ul style="list-style-type: none"> • British Heart Foundation • British Society Guidelines • Your Free Invite in association with the BJC
Cancer / Oncology	<ul style="list-style-type: none"> • Surviving Thyroid Cancer • Help Us Help You - Lung Cancer Symptoms • Becca Breast Cancer Support App • Breast Cancer Now • MoleCare App • Macmillian • Next-Generation BTK Inhibitors for B-cell Malignancies: Improving on the Past • NHS England » NHS fast tracks new 'gamechanging' drug for lung cancer • NHS England » Life-extending injection for blood cancer available on the NHS • Navigating the Patient Journey and Understanding Ongoing Challenges in Metastatic Hormone-Sensitive Prostate Cancer

Continuation of Long Term Conditions

Chronic Kidney Disease	<ul style="list-style-type: none"> • Kidney.Org • Kidney Quality Improvement Partnership
Liver Disease	<ul style="list-style-type: none"> • British Liver Trust • Liver Research • BRITISH ASSOCIATION FOR THE STUDY OF THE LIVER • LIVERnORTH • LIVER DISEASE AND CIRRHOSIS
Blood Disorders	<ul style="list-style-type: none"> • Blood Cancer • Thalassaemia • ITP • Haemophilia • UK MDS Forum • Save a life. Give plasma. • Diagnosis and management of pernicious anaemia • Haemochromatosis UK
G.I	<ul style="list-style-type: none"> • GIST Cancer UK • Overview PredictSURE IBD and IBDX to guide treatment of Crohn's disease
ENT	
G.U	
Neurological Conditions	<ul style="list-style-type: none"> • The Brain Tumour Charity • Narcolepsy.Org • ACNR
Musculoskeletal Conditions	<ul style="list-style-type: none"> • Rheumatology • National Axial Spondyloarthritis Society • Musculoskeletal health • Musculoskeletal health: 5 year prevention strategic framework • Faculty of Occupational Medicine • Overview GaitSmart assessment and vGym personalised exercise rehabilitation programme for people with gait and mobility issues • Overview AposHealth for knee osteoarthritis • Overview Upadacitinib for treating active psoriatic arthritis after inadequate response to DMARDs • Rheumatology - Medscape

Continuation of Long Term Conditions

<p>Endocrine Disorders / Metabolic Disorders</p>	<ul style="list-style-type: none"> • Endocrinology • Turner Syndrome Support Society • Thyroid Eye Disease • British Thyroid Foundation • Thyroid UK • Pituitary • Addisons Disease • Parathyroid UK • The Royal Osteoporosis Society • Metabolic Support UK
<p>Frailty</p>	<ul style="list-style-type: none"> • Recognising frailty • Identifying frailty • CLINICAL FRAILTY SCALE • NHS England » Case study: supporting people living with frailty in Hull and East Riding • NHS England » Case study: providing rapid care to people in their own home rather than going to hospital, through a frailty virtual ward in Leeds
<p>Dementia</p>	<ul style="list-style-type: none"> • Dementia UK • Understanding dementia • My House of Memories - NHS App • Dementia profile updates • Caring for Carers Dementia Support Group (Tuesdays) • Delirium Champions
<p>Allergy / Auto-immune / Genetic Conditions</p>	<ul style="list-style-type: none"> • Allergy UK • Rheumatology • Addisons Disease

Continuation of Long Term Conditions

Dermatology	<ul style="list-style-type: none"> • British Association of Dermatologists • Eczema • The British Skin Foundation • Acne vulgaris: management • The Primary Care Dermatology Society • Acne.org • Allergy UK • Urticaria • Hives • Sunburn • Causes of cancer and reducing your risk • What is Rosacea? • Rosecea • Herpes.org • Shingles • Fungal Skin Infection - Foot • The Psoriasis Association • Psoriasis • Melanoma • Skin Health Information • British Association of Plastic Reconstructive and Aesthetic Surgeons • Warts and verrucae • The Immunopathogenesis of Vitiligo
Obesity	<ul style="list-style-type: none"> • Obesity UK
Pain Management	<ul style="list-style-type: none"> • Pain Concern • UK career framework for pain nurses
Genomics	<ul style="list-style-type: none"> • New UK-wide ambitions to accelerate genomic research and drive innovation in healthcare

<i>Continuation of Long Term Conditions</i>	
Multi-Morbidity	<ul style="list-style-type: none"> • Multimorbidity • Multimorbidity / multiple long-term conditions (MLTC)
Minor Illness / First Contact Assessment	
Other / Case Studies	<ul style="list-style-type: none"> • Ultra Rare Disease Disorders And Disabilities Foundation • MyCognition Home - NHS App • The Cold Weather Plan for England • BOOK NOW for Chronic Conditions Month 2022
End of Life Care	
End of Life Care	<ul style="list-style-type: none"> • ReSPECT for healthcare professionals • Hospice UK
Covid-19	
Covid-19	<ul style="list-style-type: none"> • Covid Live • Coronavirus Statistics • Two years on: How has the coronavirus (COVID-19) pandemic changed people's daily lives?
Long Covid	<ul style="list-style-type: none"> • Supporting your recovery after COVID-19 • Long Covid Toolkit • Long term effects of COVID (Long COVID) • Post-COVID Syndrome (Long COVID) • COVID-19 Yorkshire Rehabilitation Screening Tool • FOM Guidance • Supporting colleagues affected by Long COVID
Covid Response / Recovery	

News & Views

Digital News / Remote Consultations	<ul style="list-style-type: none"> • Digital Health News Webinars • Digital Health News • NHS Digital • Digital Health Networks Newsletter: 21 March 2022 • Digital Boards Two Years On
PSNC News / Pharmacy	<ul style="list-style-type: none"> • National Pharmacy Association • Royal Pharmaceutical Society • PSNC Concessions Announcement • 18th March • 21st March • 23rd March
60 Second GP / Pulse / GP Online / HSJ / NB Medical	<ul style="list-style-type: none"> • 60 Second GP • GP Online • HSJ • Pulse Today
Primary Care Update / PCC / PPP	<ul style="list-style-type: none"> • Primary Care Bulletin • Public Policy Projects News
Practice Index	<ul style="list-style-type: none"> • Practice Index Weekly
Kings Fund	<ul style="list-style-type: none"> • The Kings Fund • Weekly News / Health Management and Policy Alert / Health and Well Being Bulletin / Digital Health Digest • Ideas that change health and care
IHCT / CCG / STP / Healthier Futures	<ul style="list-style-type: none"> • Healthier Futures • Black Country & West Birmingham CCG • Dudley Integrated Health and Care • Home :: Black Country Healthcare NHS Foundation Trust

Continuation News & Views

NHSI / NHSE	
University / Student Nurses	
Medisa / Univadis / Geeky Medics / GP Notebook / Medscape	<ul style="list-style-type: none"> • Univadis Newsletter • Univadis Nurses Headlines • Medisa • Geeky Medics • Medscape Nurses • GP Notebook • Practice-changing updates from GPnotebook: March 2022 • Latest podcast episodes from GPnotebook
The Health Foundation	<ul style="list-style-type: none"> • The Health Foundation • Do patients prefer online consultations in general practice? • How can the UK COVID-19 Inquiry bring about meaningful change? • Building public understanding of health and health inequalities
The Health Care Leaders Update	<ul style="list-style-type: none"> • Health Care Leader News
Innovation Agency	<ul style="list-style-type: none"> • Innovation Agency Exchange
RCN	<ul style="list-style-type: none"> • RCN • RCN and NaTHNaC 5th Joint Travel Health Conference • Legal update: unfair dismissal after vaccine refusal? • Legal update: protection for those taking part in trade union activities • NHS mileage rates: Chancellor must act to protect patients • RCN Congress 2022: booking now open with exciting agenda • RCN members talk, health secretary listens • Raising concerns toolkit • Campaigning for nursing on the issues that matter to members • 'I want members to know that we're listening' • Nursing Matters podcast • Apply for a Deliveroo-RCN Foundation NHS education grant • RCN Brief Spiritual Care Survey 2022 (UK) • RCN Education Forum Conference and Exhibition

<i>Continuation News & Views</i>	
Nursing in Practice / Nursing Standard / Independent Nurse	<ul style="list-style-type: none"> • Nursing Times • GPN Bulletin • Independent Nurse Magazine • Practice Nursing • Practice Nursing Highlights
QNI	<ul style="list-style-type: none"> • QNI • Educational Grants – The Queen's Nursing Institute • Queen's Nurse Annual Meeting 2022 – The Queen's Nursing Institute
NMC	<ul style="list-style-type: none"> • NMC
CMO / CNO	
World Health Organisation	<ul style="list-style-type: none"> • WHO • OpenWHO
Nice	<ul style="list-style-type: none"> • NICE
RCGP / BMA / The Lancet	<ul style="list-style-type: none"> • The Lancet • British Medical Journal • Royal College of General Practitioners • QOF QI hub • BMA Update • FREE eLearning on Diabetes
Midlands Academic Health Science Network	<ul style="list-style-type: none"> • WMAHSN Network
Healthwatch	<ul style="list-style-type: none"> • Healthwatch
Other	

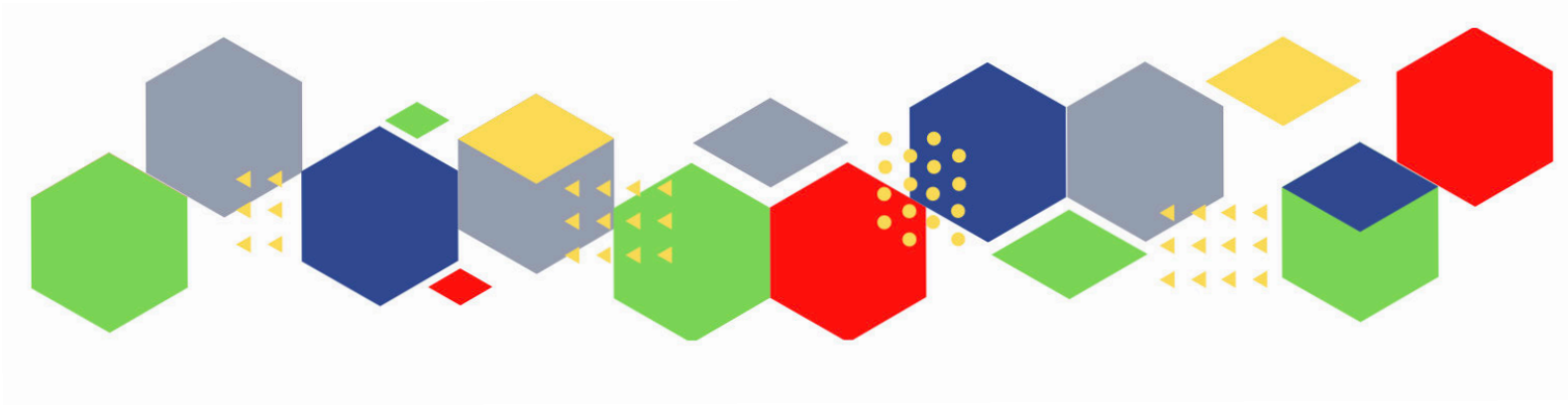
Free Training / Webinars / Meetings / CPD	
e-Learning for Health	<ul style="list-style-type: none"> • New elearning session highlights dermatological side effects of COVID-19 • New COVID-19 community contact tracing programme now available • Staff Recovery Resources for critical care and the wider health workforce recovering from the COVID-19 pandemic • MindEd infographic highlights programme's success during COVID-19 • Long COVID elearning session available • The Changing Story of Cancer programme • Updates to the Flu Immunisation elearning programme for the 2021/22 flu season • Flu Immunisation programme - elearning • Foundation elearning programme update September 2021
Eventbrite	<ul style="list-style-type: none"> • Understanding Mental Health To Better Understand Young People And You • What's Stress Costing You? Take Health Beyond Conventional Medicine-Birming Tickets, Multiple Dates • Wounds on Thursdays
YouTube	<ul style="list-style-type: none"> • NHS England
Blogs/Vlogs	<ul style="list-style-type: none"> • How well do vaccines protect against Omicron? What the data shows • A career in science - past, present and future • Changing the COVID-19 Case Definition • Reporting the vital statistics - how data management has been central to the handling of the pandemic - UK Health Security Agency • Reflecting on a year responding to COVID-19 • Let's talk about ethics review - Health Research Authority • Monitoring the Mental Health Act in 2020/21 by Care Quality Commission
Area Bulletins	
BCWB Training Hub	<ul style="list-style-type: none"> • Black Country and West Birmingham Training Hub
Evidence based care	<ul style="list-style-type: none"> • Home - aomrcebi

Continuation of Free Training / Webinars / Meetings / CPD

<p>Development / Information and Knowledge</p>	<ul style="list-style-type: none"> • FutureProof Health Training & Events • RCN Events - West Midlands • Inaugural Broadcasts 2021 • Menopause Training • RCGP Learning • Deep Dive on DPP-4 Inhibitors • Bringing people together to share knowledge - Virtual Conferences • ADVANCE CARE PLANNING • IDENTIFYING & MANAGING A DYING PATIENT • Monthly RCGP Post-Covid Syndrome (Long Covid) Training Session • FREE eLearning on influenza • Guidelines Live • Thrive in Life: Enjoying Post Cancer Happiness - Birmingham Tickets, Multiple Dates Eventbrite • Senior Mental Health Lead Training • Celebrating World Diabetes Day - Living with Diabetes Q&A Webinar • Ask Marc Launch Event • GP Notebook Study Groups • Time for Care Programme/Access Improvement Programme • A JWC Masterclass on Bovine Dermal Scaffolds • Digital Nursing Summit Secure your place • Primary Care Nursing Live • Cardiovascular Masterclass Series - Password: CVM2022 • PCN and Practice Manager Development Programme • Diabetes Education Update: 9 Care Processes and 3 Treatment Targets Tickets, Multiple Dates
<p>Free to RCN</p>	<ul style="list-style-type: none"> • RCN North Staffordshire Learning Event: Sepsis in the context of the waning COVID-19 pandemic • RCN Herefordshire Learning Event: An introduction to genomics in health care - how relevant is it to nursing? • RCN Birmingham East, North and Solihull branch meeting • RCN North Staffordshire Learning Event: Adapting and adopting – the Staff Support & Counselling Service • RCN Birmingham East, North and Solihull Learning Event: When health, safety and patient care crosses into the Coroner's Court process • RCN North Staffordshire Learning Event: A wound care update and the WAPU app

Continuation of Free Training / Webinars / Meetings / CPD

Podcasts	<ul style="list-style-type: none"> • The Nursing Handover Podcast • Nursing Standard Podcasts • What Makes a Nurse? • The MedicsPro Podcast • Nursing Matters • Welcome to the BJN Podcast • Why we care • EBN podcast • This Is Nursing • Maroon Mindset • Teach me, I'm a Nurse • Past Caring • RCGP eLearning podcast • The BMJ Podcast • Primary Care Network podcasts • The Professional Support Unit's Pandemic Podcast • How can public health nurses help deliver the Healthy Child Programme this winter? • Talking GP
Research	<ul style="list-style-type: none"> • Science Daily • Multimorbidity / multiple long-term conditions (MLTC) • Funding bodies launch consultation on future research assessment
Freebies	<ul style="list-style-type: none"> • Blue Light Card
Other	



Thank you for reading Future Proof Health's weekly news!

If you missed past issues, please click [here](#) to view them

More information can be found on our website, [here](#)

Don't forget to like us on [Facebook](#) & Follow us on [Twitter](#)

