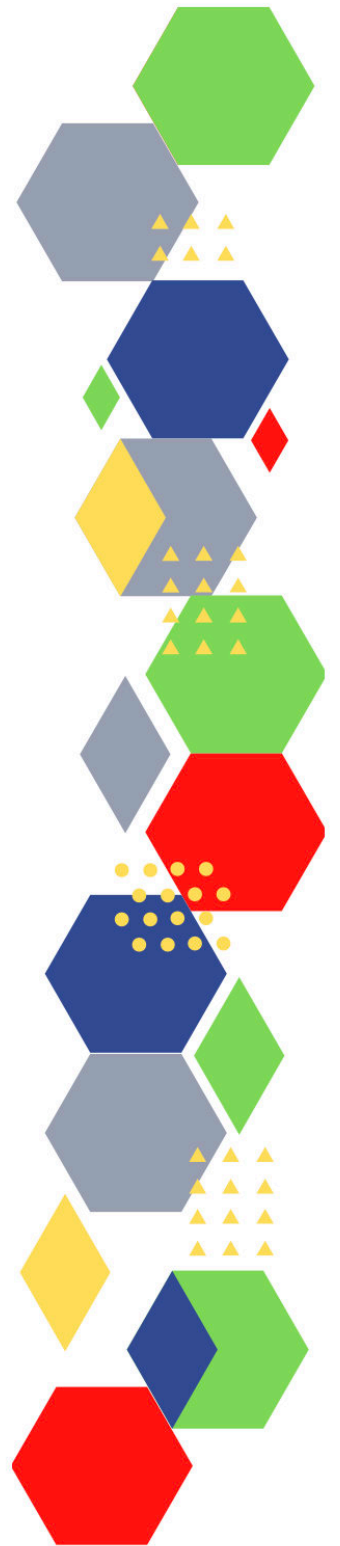
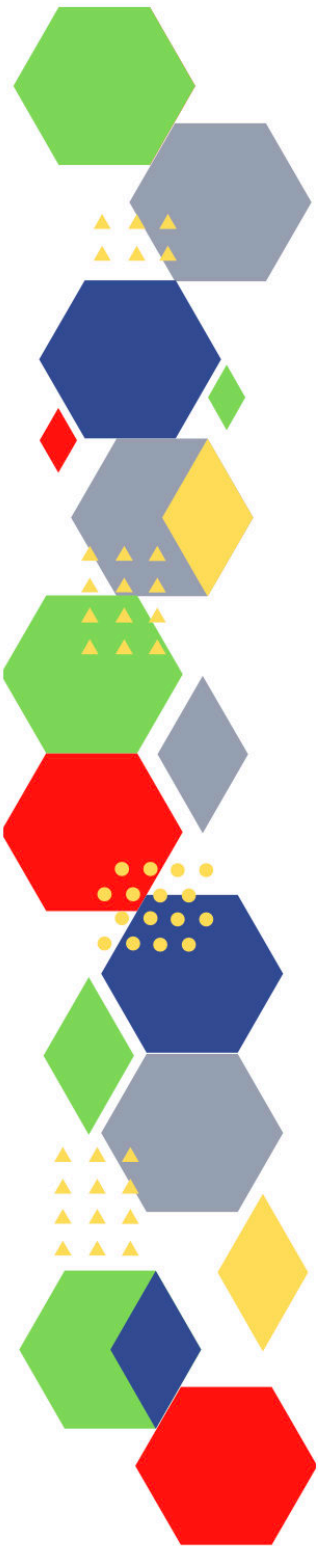




Future Proof Health Presents

Weekly News

9th February 2023



Communication	
Communication with Patients	
Communication within Teams	
Consent / Advocacy / IMCA	
People and Personal Development	
Personal / People Development / Leadership	<ul style="list-style-type: none"> <li>• <a href="#">Accountability and delegation in practice</a></li> <li>• <a href="#">Climbing the leadership ladder: Why female nurses can struggle to reach the top</a></li> <li>• <a href="#">Compassionate leadership: what it means for nurses (cogora.com)</a></li> </ul>
NHS Employers / HR / NHS Pension	<ul style="list-style-type: none"> <li>• <a href="#">NHS Employers</a></li> <li>• <a href="#">Pensions Online</a></li> </ul>
Health, Safety & Security	
<ul style="list-style-type: none"> <li>• <a href="#">NPSA</a></li> <li>• <a href="#">Control of Substances Hazardous to Health (COSHH)</a></li> <li>• <a href="#">HSE Weekly Digest ebulletin</a></li> </ul>	
Gov UK - NHS	
CQC	<ul style="list-style-type: none"> <li>• <a href="#">GP mythbusters</a></li> <li>• <a href="#">YouTube - Care Quality Commission</a></li> <li>• <a href="#">News from the Care Quality Commission: January 2023 (govdelivery.com)</a></li> </ul>
MIMS	<ul style="list-style-type: none"> <li>• <a href="#">Prescribing Update</a></li> </ul>
Drug / Device Alerts (MHRA)	<ul style="list-style-type: none"> <li>• <a href="#">Drug Safety Update (mhradrugsafety.org.uk)</a></li> </ul>
Antibiotic steward-ship / Anti-microbial resistance	

<p>Vaccines / Medications / Prescribing</p>	<ul style="list-style-type: none"> <li>• <a href="#">Protocol for ordering, storing and handling vaccines</a></li> <li>• <a href="#">A Competency Framework for all Prescribers</a></li> <li>• <a href="#">Non-medical prescribing</a></li> <li>• <a href="#">The Human Medicines Regulations 2012</a></li> <li>• <a href="#">RCN - Non-medical prescribers</a></li> <li>• <a href="#">Royal Pharmaceutical Society</a></li> <li>• <a href="#">Standards for prescribing</a></li> <li>• <a href="#">Clinical Negligence Scheme for General Practice</a></li> <li>• <a href="#">Home - electronic medicines compendium (emc)</a></li> <li>• <a href="#">Drug shortages - live tracker   MIMS online</a></li> <li>• <a href="#">Pharmacists able to supply alternative penicillin to treat strep A - GOV.UK (www.gov.uk)</a></li> <li>• <a href="#">Drug Safety Update (mhradrugsafety.org.uk)</a></li> <li>• <a href="#">Review questions use of antidepressants for analgesia (mims.co.uk)</a></li> <li>• <a href="#">Topical testosterone: warn patients about risk of accidental transfer, says MHRA (mims.co.uk)</a></li> <li>• <a href="#">Warning over switching thiazide-like diuretic (mims.co.uk)</a></li> <li>• <a href="#">Pandemic delayed initiation of antihypertensives, study suggests (mims.co.uk)</a></li> <li>• <a href="#">Evaluation of the England Community Pharmacy Quality Scheme (2018–2019 and 2019–2020) in reducing harm from NSAIDs in older patients   BMJ Open Quality</a></li> </ul>
<p>Health Protection Review</p>	
<p>Emergency Situations</p>	<ul style="list-style-type: none"> <li>• <a href="#">Resuscitation Council UK</a></li> </ul>
<p>Infection Control / Infection Statics</p>	<ul style="list-style-type: none"> <li>• <a href="#">NHS England » National infection prevention and control</a></li> </ul>
<p>Safe Guarding</p>	<ul style="list-style-type: none"> <li>• <a href="#">Female genital mutilation (FGM)</a></li> <li>• <a href="#">PREVENT</a></li> <li>• <a href="#">Child protection system in the UK</a></li> <li>• <a href="#">Safeguarding Adults</a></li> <li>• <a href="#">Safeguarding children: detailed information</a></li> <li>• <a href="#">Domestic abuse victim services, England and Wales: 2022 (www.gov.uk)</a></li> <li>• <a href="#">Dudley Financial Abuse Alliance - September 2022 (govdelivery.com)</a></li> </ul>
<p>Practice Policies: Practice Management / Accountability Duty of Candour</p>	
<p>Audit</p>	

Information Governance / Record Keeping	<ul style="list-style-type: none"> <li>• <a href="#">Guide to Data Protection</a></li> <li>• <a href="#">Supporting general practice – Medical record keeping</a></li> </ul>
<b>Quality &amp; Service Improvement</b>	
Quality, Service & Improvement	<ul style="list-style-type: none"> <li>• <a href="#">The PRSB</a></li> <li>• <a href="#">General Practice Assessment Questionnaire (GPAQ)</a></li> <li>• <a href="#">Healthwatch</a></li> <li>• <a href="#">NHS Five Year Forward View</a></li> <li>• <a href="#">General Practice Forward View</a></li> <li>• <a href="#">NMC</a></li> <li>• <a href="#">Dr Jon Griffiths Blog</a></li> <li>• <a href="#">NHS Confed</a></li> <li>• <a href="#">Health Quality Improvement Partnership</a></li> </ul>
Roles in General Practice Including AHP	<ul style="list-style-type: none"> <li>• <a href="#">Standards for nursing associates</a></li> <li>• <a href="#">GP mythbuster 57: Health Care Assistants in General Practice</a></li> <li>• <a href="#">NHS England » Allied Health Professions</a></li> <li>• <a href="#">NHS England » Workforce development framework: social prescribing link workers</a></li> </ul>
Revalidation	
Personal Practice & Development	
Practice Management	<ul style="list-style-type: none"> <li>• <a href="#">Institute of General Practice Management</a></li> <li>• <a href="#">Practice Index</a></li> </ul>
EMIS / System One / IT	
Recruitment Employment / Retirement / Legacy Nursing	<ul style="list-style-type: none"> <li>• <a href="#">I'm a GP – Should I work within the NHS or consider a move to a Private role? (menloparkrecruitment.com)</a></li> </ul>
NHS Staff Self Care & Resilience	<ul style="list-style-type: none"> <li>• <a href="#">Samaritans</a></li> <li>• <a href="#">Mental Health at work</a></li> <li>• <a href="#">Calm</a></li> <li>• <a href="#">Supporting our NHS people</a></li> <li>• <a href="#">The Hub :: Black Country Healthcare NHS Foundation Trust</a></li> <li>• <a href="#">VIDEO: The importance of mental health in the workplace! - (menloparkrecruitment.com)</a></li> <li>• <a href="#">RCN Magazines: beat burnout   long COVID support   how to talk to patients about strike action</a></li> </ul>

Practice Transformation / Innovation Agency	<ul style="list-style-type: none"> <li>• <a href="#">Shaping the future of technology in general practice - NHS Digital</a></li> <li>• <a href="#">Independent health care and the NHS   The King's Fund (kingsfund.org.uk)</a></li> </ul>
Future of NHS / General Practice / NHS Recovery	<ul style="list-style-type: none"> <li>• <a href="#">NHS England</a></li> <li>• <a href="#">NHS England » Primary care</a></li> <li>• <a href="#">NHS mandate 2022 to 2023</a></li> <li>• <a href="#">Changes to NHS budget</a></li> <li>• <a href="#">Register with a GP Surgery</a></li> <li>• <a href="#">Press release CIPFA publishes interesting care report</a></li> <li>• <a href="#">NHS England » Discharge funding for step down care/£200 million fund</a></li> </ul>
NHS Resolution	
ICS / ICB / ICP / PCN Commissioning	<ul style="list-style-type: none"> <li>• <a href="#">NHS England » Direct commissioning delegation</a></li> <li>• <a href="#">NHS commissioning » Delegation of primary medical, pharmaceutical, ophthalmic and dental functions (england.nhs.uk)</a></li> <li>• <a href="#">People, partnerships and place: How can ICSs turn the rhetoric into reality?   The Nuffield Trust</a></li> </ul>
QOF / PHOF / DES / LES / NHS Contract / CQRS / CQUIN	
Leadership / Innovation	
Greener NHS	<ul style="list-style-type: none"> <li>• <a href="#">Greener Allied Health Professional hub (england.nhs.uk)</a></li> </ul>
<b>Personalised Care</b>	
Personalised Care / Self Care / Social Prescribing / Health Coaching	<ul style="list-style-type: none"> <li>• <a href="#">Self Care forum</a></li> <li>• <a href="#">Personalised Care Institute</a></li> <li>• <a href="#">Personalised care</a></li> <li>• <a href="#">Social Prescribing Academy</a></li> <li>• <a href="#">NHS England » Workforce development framework: social prescribing link workers</a></li> <li>• <a href="#">Leadership for Personalised Care Newsletter</a></li> <li>• <a href="#">Social prescribing standard – PRSB (theprsb.org)</a></li> </ul>
Group consultation	
Working Differently	
Shared Decision Making	<ul style="list-style-type: none"> <li>• <a href="#">Personalised Care Institute</a></li> </ul>

Equality & Diversity	
Equality & Diversity	<ul style="list-style-type: none"> <li>• <a href="#">Public Health Profiles</a></li> <li>• <a href="#">Diversity and Inclusion Calendar 2023 - RightTrack Learning</a></li> <li>• <a href="#">2023 D&amp;I Calendar (righttracklearning.com)</a></li> </ul>
Inclusion Health	<ul style="list-style-type: none"> <li>• <a href="#">Health Creation Academic Network</a></li> <li>• <a href="#">Inequality on the inside</a></li> </ul>
Poverty / Homelessness	<ul style="list-style-type: none"> <li>• <a href="#">Crisis</a></li> <li>• <a href="#">This is Poverty</a></li> <li>• <a href="#">Is the energy crisis the UK's next public health emergency? (independentnurse.co.uk)</a></li> <li>• <a href="#">UK Poverty 2023: The essential guide to understanding poverty in the UK   JRF</a></li> </ul>
Population Health / Health Communities	
Thrive Into Work	<ul style="list-style-type: none"> <li>• <a href="#">Thrive into Work</a></li> <li>• <a href="#">Thrive into Work Referral form</a></li> </ul>
Health Inequalities	<ul style="list-style-type: none"> <li>• <a href="#">NHS News</a></li> <li>• <a href="#">Health inequalities – from evidence to action</a></li> <li>• <a href="#">Transforming lives, improving health outcomes   NHS Confederation</a></li> <li>• <a href="#">Healthcare Inequalities: Access to NHS prescribing and exemption schemes in England</a></li> <li>• <a href="#">Health Inequalities - elearning for healthcare (e-lfh.org.uk)</a></li> <li>• <a href="#">Population health measures aimed at the worst health outcomes (kingsfundmail.org.uk)</a></li> </ul>
Trans / Non-binary Health / LGBTQ+	<ul style="list-style-type: none"> <li>• <a href="#">LGBT Foundation</a></li> <li>• <a href="#">Surgery staff grab sheet (squarespace.com)</a></li> <li>• <a href="#">Trans inclusive organisations — TransActual</a></li> <li>• <a href="#">TransActual - Healthcare</a></li> <li>• <a href="#">CliniQ</a></li> </ul>
Migrant / Refugee Health	<ul style="list-style-type: none"> <li>• <a href="#">THE REFUGEE &amp; MIGRANT CENTRE</a></li> </ul>
Traveller / Gypsy / Romany Health	<ul style="list-style-type: none"> <li>• <a href="#">Gypsy Roma and Traveller History and Culture   The Traveller Movement</a></li> <li>• <a href="#">Friends, Families and Travellers (gypsy-traveller.org)</a></li> </ul>
Veterans Health	<ul style="list-style-type: none"> <li>• <a href="#">The first call for help takes courage</a></li> </ul>

Voluntary / Charity	
<b>Management of Emergency Situations</b>	
Management of Emergency Situations	
111 / Emergency Care	
First Contact	<ul style="list-style-type: none"> <li>• <a href="#">Supporting general practice – Common pitfalls</a></li> <li>• <a href="http://gppaedstips.blogspot.com">Paediatrics for Primary Care (and anyone else) (gppaedstips.blogspot.com)</a></li> </ul>
Red Flags	
Sepsis	<ul style="list-style-type: none"> <li>• <a href="#">Sepsis: recognition, diagnosis and early management</a></li> <li>• <a href="#">Sepsis guidance implementation advice for adults</a></li> <li>• <a href="#">Sepsis in Children</a></li> <li>• <a href="#">Sepsis Trust</a></li> <li>• <a href="#">quick SEPSIS RELATED ORGAN FAILURE ASSESSMENT</a></li> </ul>
Therapeutic Monitoring	
OSCE	<ul style="list-style-type: none"> <li>• <a href="#">Geeky Medics</a></li> <li>• <a href="#">Abdominal Examination - Demonstration - YouTube</a></li> <li>• <a href="#">Cardiovascular Examination - Demonstration - YouTube</a></li> <li>• <a href="#">Respiratory Examination - Demonstration - YouTube</a></li> <li>• <a href="#">Physical Diagnosis Skills - University of Washington School of Medicine</a></li> </ul>
<b>Role Specific</b>	
Cervical Cytology	<ul style="list-style-type: none"> <li>• <a href="#">Guide to the interim assessment</a></li> <li>• <a href="#">British Association for Cytopathology</a></li> <li>• <a href="#">Lab Tests Online</a></li> <li>• <a href="#">Pressure on general practice leads to lowest cervical screening rates in ten years (cogora.com)</a></li> <li>• <a href="#">NHS England » NHS urges women to book a cervical screening as a third don't take up vital offer</a></li> </ul>
Ear Care	<ul style="list-style-type: none"> <li>• <a href="#">Ear Care Centre</a></li> <li>• <a href="#">RNID</a></li> </ul>
Wound Management / Compression	<ul style="list-style-type: none"> <li>• <a href="#">Microworld</a></li> <li>• <a href="#">Tissue Viability Society</a></li> <li>• <a href="#">The BLS</a></li> </ul>

Minor Surgery	
Obtaining Samples / Results	<ul style="list-style-type: none"> <li>• <a href="#">Lab Tests Online</a></li> </ul>
<b>Health Promotion / Health Screening</b>	
Health Promotion / Population Health	<ul style="list-style-type: none"> <li>• <a href="#">Better Health</a></li> <li>• <a href="#">SHAPE   Strategic Health Asset Planning and Evaluation (shapeatlas.net)</a></li> <li>• <a href="#">Is the energy crisis the UK's next public health emergency? (independentnurse.co.uk)</a></li> </ul>
Health Screening	<ul style="list-style-type: none"> <li>• <a href="#">PHE Screening</a></li> </ul>
PHE / OHID / UKHSA	<ul style="list-style-type: none"> <li>• <a href="#">Knowledge &amp; Library Services</a></li> <li>• <a href="#">Campaign Resources</a></li> <li>• <a href="#">Public Health Profiles</a></li> <li>• <a href="#">Health Publications</a></li> <li>• <a href="#">Health Profile for England 2021</a></li> <li>• <a href="#">English indices of deprivation 2019</a></li> </ul>
NHS Health Check	<ul style="list-style-type: none"> <li>• <a href="#">NHS Health Check</a></li> </ul>
UK GOV Flu / Covid / Bird Flu	<ul style="list-style-type: none"> <li>• <a href="#">vTechnical report on the COVID-19 pandemic in the UK - GOV.UK (outlook.com)</a></li> <li>• <a href="#">Investigation of SARS-CoV-2 variants: technical briefings (outlook.com)</a></li> <li>• <a href="#">VCSEP evaluation: from COVID-19 response to emergency preparedness (outlook.com)</a></li> <li>• <a href="#">Coronavirus (COVID-19) vaccines adverse reactions (outlook.com)</a></li> <li>• <a href="#">Coronavirus (COVID-19) Infection Survey, UK: 13 January 2023 (outlook.com)</a></li> <li>• <a href="#">National flu and COVID-19 surveillance reports: 2022 to 2023 season (outlook.com)</a></li> <li>• <a href="#">COVID-19 vaccine monthly surveillance reports (week 39 2021 to week 2 2023) (outlook.com)</a></li> <li>• <a href="#">NHS COVID-19 app statistics (outlook.com)</a></li> <li>• <a href="#">Seasonal influenza vaccine uptake in GP patients: winter season 2021 to 2022 - GOV.UK (outlook.com)</a></li> <li>• <a href="#">Coronavirus (Covid-19) infection survey, UK: 13 January 2023, Office for National Statistics, 13 January 2023 (outlook.com)</a></li> </ul>
UK GOV - General Practice / Primary Care	<ul style="list-style-type: none"> <li>• <a href="#">GP out-of-hours syndromic surveillance: weekly bulletins for 2023 (outlook.com)</a></li> <li>• <a href="#">GP in-hours: weekly bulletins for 2023 (outlook.com)</a></li> <li>• <a href="#">Adult social care in England, monthly statistics: January 2023 (outlook.com)</a></li> </ul>



UK GOV - Secondary Care	<ul style="list-style-type: none"> <li>• <a href="#">Diagnostic waiting times and activity statistics: November 2022, NHS England, 12 January 2023 (outlook.com)</a></li> </ul>
UK GOV Deaths / Suicide / Palliative Care / Mortality / End of Life	<ul style="list-style-type: none"> <li>• <a href="#">Deaths registered weekly in England and Wales, provisional: week ending 30 December 2022 (outlook.com)</a></li> <li>• <a href="#">Weekly all-cause mortality surveillance: 2022 to 2023 - GOV.UK (outlook.com)</a></li> <li>• <a href="#">Deaths registered weekly in England and Wales, provisional: week ending 6 January 2023 (outlook.com)</a></li> </ul>
UK GOV - LTC - including cancer	<ul style="list-style-type: none"> <li>• <a href="#">Primary Care Dementia Data, October 2022 (outlook.com)</a></li> <li>• <a href="#">Cardiovascular disease profiles: January 2023 update - GOV.UK (outlook.com)</a></li> <li>• <a href="#">Diabetes foot care profiles: January 2023 update (outlook.com)</a></li> <li>• <a href="#">Palliative and end of life care profiles: January 2023 data update (outlook.com)</a></li> <li>• <a href="#">Statistics » Cancer Waiting Times (outlook.com)</a></li> </ul>
Surveillance / Syndromic Surveillance	<ul style="list-style-type: none"> <li>• <a href="#">National ambulance syndromic surveillance: weekly bulletins 2023 - GOV.UK (outlook.com)</a></li> <li>• <a href="#">Syndromic surveillance: weekly summaries for 2023 - GOV.UK (outlook.com)</a></li> </ul>
Ambulance / Remote Health / 111 / Urgent Care / A&E	<ul style="list-style-type: none"> <li>• <a href="#">Remote health advice: weekly bulletins for 2023 - GOV.UK (outlook.com)</a></li> <li>• <a href="#">Emergency department: weekly bulletins for 2023 - GOV.UK (outlook.com)</a></li> <li>• <a href="#">A&amp;E attendances and emergency admissions data: December 2022, NHS England, 12 January 2023 (outlook.com)</a></li> <li>• <a href="#">Statistics » Ambulance Quality Indicators (outlook.com)</a></li> <li>• <a href="#">Integrated urgent care (including NHS 111) data, November 2022 (official statistics) and December 2022 (weekly aggregate provisional statistics), NHS England, 12 January 2023 (outlook.com)</a></li> </ul>
UK GOV Infectious Disease Monitoring / NOIDS	<ul style="list-style-type: none"> <li>• <a href="#">Notifiable diseases: causative agents reports for 2023 - GOV.UK (outlook.com)</a></li> <li>• <a href="#">Notifiable diseases: last 52 weeks (outlook.com)</a></li> <li>• <a href="#">Notifiable diseases: weekly reports for 2023 - GOV.UK (outlook.com)</a>Enterovirus: strain characterisation - <a href="#">GOV.UK (outlook.com)</a></li> <li>• <a href="#">Group A streptococcal infections: activity during the 2022 to 2023 season (outlook.com)</a></li> <li>• <a href="#">Diphtheria: cases among asylum seekers in England, 2022 and 2023 - GOV.UK (outlook.com)</a></li> <li>• <a href="#">National norovirus and rotavirus surveillance reports: 2022 to 2023 season (outlook.com)</a></li> </ul>
UK GOV - Mental Health / Learning Difficulties	
Addiction/Smoking	<ul style="list-style-type: none"> <li>• <a href="#">Drink Coach</a></li> <li>• <a href="#">Stop smoking interventions and services</a></li> </ul>

## Immunisation / Travel Health

- [Joint Committee on Vaccination and Immunisation](#)
- [Immunisation against infectious disease](#)
- [West Midlands Immunisation Service](#)
- [Vaccination of individuals with uncertain or incomplete immunisation status](#)
- [Immunisation Queries: Immunisation information for Health Care Services within the West Midlands area](#)
- [Immunisation](#)
- [Vaccinations and infections](#)
- [Immunisation \(independentnurse.co.uk\)](#)

Flu	<ul style="list-style-type: none"> <li>• <a href="#">Flu and flu vaccinations</a></li> <li>• <a href="#">The national influenza immunisation programme 2021 to 2022</a></li> <li>• <a href="#">Flu vaccines for the 2021 to 2022 season poster</a></li> <li>• <a href="#">Appendix C: Flu vaccinator competency assessment tool</a></li> <li>• <a href="#">Healthcare assistants and flu vaccinations</a></li> </ul>
Covid Vaccine	<ul style="list-style-type: none"> <li>• <a href="#">Greenbook COVID-19 chapter 14a</a></li> <li>• <a href="#">COVID-19 Vaccine Moderna e-learning now available</a></li> <li>• <a href="#">GP COVID-19 vaccine dashboard</a></li> <li>• <a href="#">Updates made to the COVID-19 vaccination learning programme</a></li> <li>• <a href="#">NHS England » NHS issues final call to come forward for COVID booster</a></li> <li>• <a href="#">coronavirus (COVID-19) vaccination programme (outlook.com)</a></li> </ul>
Children	<ul style="list-style-type: none"> <li>• <a href="#">Child Health Information Services   Local Government Association</a></li> </ul>
Adults	<ul style="list-style-type: none"> <li>• <a href="#">Immunisation patient group direction (PGD) templates</a></li> <li>• <a href="#">Shingles immunisation programme: introduction of Shingrix® letter</a></li> </ul>
Vaccine Update	<ul style="list-style-type: none"> <li>• <a href="#">Vaccine update: issue 332, October 2022, flu special edition - GOV.UK (www.gov.uk)</a></li> <li>• <a href="#">Vaccine update: issue 333, December 2022 - GOV.UK (www.gov.uk)</a></li> <li>• <a href="#">Vaccine update: issue 334, January 2023 (outlook.com)</a></li> </ul>
PGD	
Travel Health	<ul style="list-style-type: none"> <li>• <a href="#">Travel Health Pro</a></li> <li>• <a href="#">Fit for Travel</a></li> <li>• <a href="#">Travel Health</a></li> <li>• <a href="#">Jane Chiodini</a></li> <li>• <a href="#">Corona.Help</a></li> </ul>

Mental Health / Learning Disability / Disability	
Mental Health	<ul style="list-style-type: none"> <li>• <a href="#">Mental Health</a></li> <li>• <a href="#">Mental Health UK</a></li> <li>• <a href="#">Mind</a></li> <li>• <a href="#">Place2b</a></li> <li>• <a href="#">Rethink Mental Illness</a></li> <li>• <a href="#">Young Minds</a></li> <li>• <a href="#">Every Mind Matters</a></li> <li>• <a href="#">Calm</a></li> <li>• <a href="#">Headspace</a></li> <li>• <a href="#">Better Health - Every Mind Matters - Resources</a></li> <li>• <a href="#">ZSA Training</a></li> <li>• <a href="#">NHS &gt; Mental Health</a></li> <li>• <a href="#">Mental Health and the Costof-Living Crisis: Another pandemic in the making?</a></li> <li>• <a href="#">Adults with depression who want to quit antidepressants should be given support on how to do it safely over time, says NICE   News   News   NICE</a></li> <li>• <a href="#">Mental health services boosted by £150 million government funding - GOV.UK (www.gov.uk)</a></li> <li>• <a href="#">Government urged to strengthen draft Mental Health Bill - Committees - UK Parliament</a></li> </ul>
Learning Disability	<ul style="list-style-type: none"> <li>• <a href="#">Learning Disabilities</a></li> <li>• <a href="#">Learning Disability England</a></li> <li>• <a href="#">Mencap</a></li> <li>• <a href="#">Bild</a></li> <li>• <a href="#">Autism</a></li> <li>• <a href="#">NHS England » Care, Education and Treatment Reviews (CETRs)</a></li> </ul>
Disability (Inc. hearing and visual)	<ul style="list-style-type: none"> <li>• <a href="#">Disability Rights UK</a></li> <li>• <a href="#">Disability Matters</a></li> <li>• <a href="#">RNID - National hearing loss charity</a></li> <li>• <a href="#">Spokzpeople</a></li> <li>• <a href="#">Sight Loss Data Tool   RNIB</a></li> </ul>

From Cradle to...

<p>Infant Health</p>	<ul style="list-style-type: none"> <li>• <a href="#">Tommys</a></li> <li>• <a href="#">First Steps Nutrition Trust</a></li> <li>• <a href="#">Bliss</a></li> <li>• <a href="#">ICON Toolkit</a></li> <li>• <a href="#">Sandwell - BC - ICB Primary Care - 7 minute briefing</a></li> </ul>
<p>Child Health</p>	<ul style="list-style-type: none"> <li>• <a href="#">Unicef</a></li> <li>• <a href="#">Health Professional Academy</a></li> <li>• <a href="#">Premature Babies</a></li> <li>• <a href="#">Child and Maternal Health</a></li> <li>• <a href="#">Women and Child First</a></li> <li>• <a href="#">Child Health Information Services</a></li> <li>• <a href="#">Place2b</a></li> <li>• <a href="#">Childhood eczema</a></li> <li>• <a href="#">Childhood asthma</a></li> <li>• <a href="#">Paediatrics for Primary Care (and anyone else) (gppaedstips.blogspot.com)</a></li> <li>• <a href="#">Barnardos</a></li> <li>• <a href="#">Childrens Society</a></li> <li>• <a href="#">Action for Children</a></li> </ul>
<p>Adolescent Health</p>	<ul style="list-style-type: none"> <li>• <a href="#">Adolescent Health Programme</a></li> <li>• <a href="#">Society for Adolescent Health and Medicine</a></li> <li>• <a href="#">Young Minds</a></li> </ul>
<p>Mens Health</p>	<ul style="list-style-type: none"> <li>• <a href="#">Mens Health Forum</a></li> <li>• <a href="#">Mens Health Month</a></li> <li>• <a href="#">Mens health.org</a></li> <li>• <a href="#">Mens Health UK</a></li> <li>• <a href="#">Men and mental health</a></li> <li>• <a href="#">Men's Mental Health Awareness</a></li> <li>• <a href="#">Prostate Cancer UK</a></li> <li>• <a href="#">Orchid Fighting Male Cancer</a></li> <li>• <a href="#">Prostate Cancer UK Facebook Page</a></li> <li>• <a href="#">Movember</a></li> </ul>

Women's Health

- [Womens Health Concern](#)
- [Well Being of Women](#)
- [Coppa Feel](#)
- [Menopause Matters](#)
- [The Menopause Charity](#)
- [Royal College of Obstetricians and Gynaecologists - Guidelines](#)
- [Pelvic Partnership](#)
- [CRUK - Womens Cancer](#)
- [Breast Cancer Now](#)
- [Foundation for Women's Cancer](#)
- [Eve Appeal](#)
- [Ovarian.Org](#)
- [Jo's Trust](#)
- [Well Spring](#)
- [Know your Lemons](#)
- [British Menopause Society - www.thebms.org.uk](#)
- [NHS - www.nhs.uk/conditions/menopause](#)
- [Henpicked - henpicked.net](#)
- [The Menopause Exchange - www.menopause-exchange.co.uk](#)
- [Women's Health Concerns - www.womens-health-concern.org](#)
- [Menopause Matters - www.menopausematters.co.uk](#)
- [The Daisy Network - www.daisynetwork.org](#)
- [Dr Louise Newson's Menopause Doctor - www.menopausedoctor.co.uk](#)
- [Manage My Menopause - www.managemymenopause.co.uk/menopause-advice](#)
- [Menopause Support - menopausesupport.co.uk](#)
- [Bourne2Care](#)
- [Vaginal atrophy: what is it and how can it be treated? \(practicenursing.com\)](#)
- [Overview | Menopause: diagnosis and management \(bing.com\)](#)
- [Understanding the risks of breast cancer \(bing.com\)](#)
- [A guide to Hormone Replacement Therapy \(HRT\) \(independentnurse.co.uk\)](#)
- [How to manage genitourinary symptoms of menopause \(cogora.com\)](#)

The Older Population	<ul style="list-style-type: none"> <li>• <a href="#">BGS</a></li> <li>• <a href="#">Ageing Better</a></li> <li>• <a href="#">Delirium Champions - YouTube</a></li> </ul>
Carers / Social Care / Care Homes	<ul style="list-style-type: none"> <li>• <a href="#">The Care Provider Alliance</a></li> <li>• <a href="#">Skills for Care</a></li> <li>• <a href="#">The Care Workers' Charity</a></li> <li>• <a href="#">Supporting Adult Carers</a></li> <li>• <a href="#">The Care UK</a></li> <li>• <a href="#">The Carer: Read The Latest Issue Online Today! (ourmailsender4.com)</a></li> <li>• <a href="#">Adult Social Care Update</a></li> <li>• <a href="#">Adult social care funding and eligibility   The King's Fund (kingsfund.org.uk)</a></li> <li>• <a href="#">Join Us At The Alzheimer's Dementia &amp; Care Show (ourmailsender4.com)</a></li> </ul>
Young Carers	
Family Planning & Sexual Health	
Family Planning	<ul style="list-style-type: none"> <li>• <a href="#">Faculty of Sexual and Reproductive Healthcare Education and Training</a></li> </ul>
Reproductive	<ul style="list-style-type: none"> <li>• <a href="#">Tommys</a></li> </ul>
Sexual Health / Sexual Abuse	<ul style="list-style-type: none"> <li>• <a href="#">Sexual and Reproductive Health Profiles</a></li> <li>• <a href="#">FSRH Education &amp; Training</a></li> <li>• <a href="#">Syphilis – don't miss it! (cogora.com)</a></li> </ul>
Maternity / Neonate health	<ul style="list-style-type: none"> <li>• <a href="#">Women's experience of maternity care shows 'concerning' decline says CQC (cogora.com)</a></li> <li>• <a href="#">Gestational diabetes better predicted using specific fat measurement rather than BMI for obese women (cogora.com)</a></li> <li>• <a href="#">Covid-19 at any stage of pregnancy poses 'threat' to women and babies (cogora.com)</a></li> </ul>

Care of Patients with Long Term Conditions

LTC	<ul style="list-style-type: none"> <li>• <a href="#">Physical Activity for the Prevention and Management of Long-Term Conditions</a></li> <li>• <a href="#">Health A to Z</a></li> </ul>
Diabetes & Pre-Diabetes	<ul style="list-style-type: none"> <li>• <a href="#">Mumoactive</a></li> <li>• <a href="#">The mySugr App</a></li> <li>• <a href="#">PCDS Entry level module series - Foot Check</a></li> <li>• <a href="#">Type 2 diabetes in adults: management</a></li> <li>• <a href="#">DiabetesontheNet   Online diabetes journals, education and resources for healthcare professionals.</a></li> <li>• <a href="#">Professional Perspectives   GPnotebook Resources</a></li> <li>• <a href="#">Healthy Living</a></li> <li>• <a href="#">Gestational diabetes better predicted using specific fat measurement rather than BMI for obese women (cogora.com)</a></li> </ul>
Respiratory	<ul style="list-style-type: none"> <li>• <a href="#">Spirometry: step by step</a></li> <li>• <a href="#">ARTP</a></li> <li>• <a href="#">British Lung Foundation</a></li> <li>• <a href="#">The Primary Care Respiratory Society</a></li> <li>• <a href="#">Respiratory – Respimat® patient resources   Boehringer Ingelheim (boehringer-ingelheim.com)</a></li> <li>• <a href="#">Respiratory News &amp; Advice   (nursinginpractice.com)</a></li> <li>• <a href="#">Dudley pulmonary rehab - Template PI (dgft.nhs.uk)</a></li> <li>• <a href="#">Colds and flu and your lung condition (engagingnetworks.app)</a></li> </ul>
COPD	<ul style="list-style-type: none"> <li>• <a href="#">Right Breathe</a></li> <li>• <a href="#">GOLD COPD 2022 strategy   Independent professional body guideline   Guidelines</a></li> </ul>
Asthma	<ul style="list-style-type: none"> <li>• <a href="#">Asthma UK</a></li> <li>• <a href="#">Asthma: diagnosis, monitoring and chronic asthma management</a></li> <li>• <a href="#">Global Initiative for Asthma</a></li> <li>• <a href="#">British guideline on the diagnosis and pharmacological management of asthma in children</a></li> <li>• <a href="#">British Thoracic Society guidelines for home oxygen use in adults: accredited by NICE</a></li> <li>• <a href="#">SIGN and BTS management of asthma in children guideline   Independent professional body guideline   Guidelines</a></li> </ul>
Hypertension	<ul style="list-style-type: none"> <li>• <a href="#">British Heart Foundation</a></li> <li>• <a href="#">Blood Pressure UK</a></li> <li>• <a href="#">Hypertension in adults: diagnosis and management</a></li> <li>• <a href="#">Hypertension in adults: diagnosis and treatment</a></li> <li>• <a href="#">Hypertension: symptoms to look out for and treatment options (rcni.com)</a></li> <li>• <a href="#">Ten top tips: Hypertension diagnosis and management</a></li> <li>• <a href="#">Blood pressure medication at night compared with the morning (gpnotebook.com)</a></li> </ul>

*Continuation of Long Term Conditions*

CVD/AF	<ul style="list-style-type: none"> <li>• <a href="#">QRISK®3-2018 risk calculator</a></li> <li>• <a href="#">Heart Rhythm Alliance</a></li> <li>• <a href="#">CVD risk assessment and management</a></li> <li>• <a href="#">NHS lipid management pathway   NHS guideline   Guidelines</a></li> <li>• <a href="#">Cholesterol &amp; Diabetes Patient Information Booklet - Benecol HCP - UK</a></li> <li>• <a href="#">Bayer plc: X-IMPACT</a></li> <li>• <a href="#">Consider prescribing statins for lower CVD risk, NICE says (cogora.com)</a></li> <li>• <a href="#">Project information   Cardiovascular disease: risk assessment and reduction, including lipid modification   Guidance   NICE</a></li> </ul>
Heart Failure	<ul style="list-style-type: none"> <li>• <a href="#">British Heart Foundation</a></li> <li>• <a href="#">British Society Guidelines</a></li> <li>• <a href="#">Home - Pumping Marvellous</a></li> <li>• <a href="#">Heart Failure UK Guidelines</a></li> </ul>
Cancer / Oncology	<ul style="list-style-type: none"> <li>• <a href="#">Surviving Thyroid Cancer</a></li> <li>• <a href="#">Help Us Help You - Lung Cancer Symptoms</a></li> <li>• <a href="#">Breast Cancer Now</a></li> <li>• <a href="#">Macmillian</a></li> <li>• <a href="#">Bowel Cancer UK</a></li> <li>• <a href="#">Brain Trust</a></li> <li>• <a href="#">CRUK</a></li> <li>• <a href="#">Action Cancer</a></li> <li>• <a href="#">Foundation for Women's Cancer</a></li> <li>• <a href="#">NHS England » Cancer</a></li> </ul>
Chronic Kidney Disease	<ul style="list-style-type: none"> <li>• <a href="#">Kidney.Org</a></li> <li>• <a href="#">Kidney Quality Improvement Partnership</a></li> </ul>
Liver Disease	<ul style="list-style-type: none"> <li>• <a href="#">British Liver Trust</a></li> <li>• <a href="#">Liver Research</a></li> <li>• <a href="#">BRITISH ASSOCIATION FOR THE STUDY OF THE LIVER</a></li> <li>• <a href="#">LIVERNORTH</a></li> <li>• <a href="#">LIVER DISEASE AND CIRRHOSIS</a></li> </ul>



*Continuation of Long Term Conditions*

Blood Disorders	<ul style="list-style-type: none"> <li>• <a href="#">Blood Cancer UK</a></li> <li>• <a href="#">UK Thalassaemia Society</a></li> <li>• <a href="#">The ITP Support Association</a></li> <li>• <a href="#">UK-ITP Paediatric ITP Registry</a></li> <li>• <a href="#">The Haemophilia Society</a></li> <li>• <a href="#">UK MDS Forum</a></li> <li>• <a href="#">Pernicious Anaemia Society</a></li> <li>• <a href="#">Haemochromatosis UK</a></li> </ul>
G.I	<ul style="list-style-type: none"> <li>• <a href="#">GIST Cancer UK</a></li> <li>• <a href="#">Pernicious Anaemia Society</a></li> <li>• <a href="#">Crohns and Colitis</a></li> <li>• <a href="#">Making Sense of NICE Guidance for Bowel Care - Bowel Interest Group</a></li> </ul>
ENT	
G.U	
ME / CFS / Fibromyalgia	<ul style="list-style-type: none"> <li>• <a href="#">ME Association</a></li> <li>• <a href="#">ME Research</a></li> <li>• <a href="#">Action for M.E</a></li> <li>• <a href="#">Fibromyalgia Action UK</a></li> <li>• <a href="#">Fibromyalgia UK</a></li> <li>• <a href="#">Home - Fibromyalgia Awareness UK (fibroawarenessuk.org)</a></li> <li>• <a href="#">Fibromyalgia - Symptoms, diagnosis and treatment   BMJ Best Practice</a></li> <li>• <a href="#">Fibromyalgia - The Brain Charity</a></li> </ul>
Neurological Conditions	<ul style="list-style-type: none"> <li>• <a href="#">The Brain Tumour Charity</a></li> <li>• <a href="#">Narcolepsy.Org</a></li> <li>• <a href="#">ACNR</a></li> <li>• <a href="#">MS Society UK   Information, research and support   Multiple Sclerosis Society UK</a></li> <li>• <a href="#">Home   MS Trust</a></li> </ul>

*Continuation of Long Term Conditions*

<p>Musculoskeletal Conditions</p>	<ul style="list-style-type: none"> <li>• <a href="#">Rheumatology</a></li> <li>• <a href="#">National Axial Spondyloarthritis Society</a></li> <li>• <a href="#">Musculoskeletal health</a></li> <li>• <a href="#">Musculoskeletal health: 5 year prevention strategic framework</a></li> <li>• <a href="#">Faculty of Occupational Medicine</a></li> <li>• <a href="#">Guide to embedding your first contact physiotherapy service</a></li> </ul>
<p>Endocrine Disorders / Metabolic Disorders</p>	<ul style="list-style-type: none"> <li>• <a href="#">Society for Endocrinology</a></li> <li>• <a href="#">Turner Syndrome Support Society</a></li> <li>• <a href="#">Thyroid Eye Disease</a></li> <li>• <a href="#">British Thyroid Foundation</a></li> <li>• <a href="#">Thyroid UK</a></li> <li>• <a href="#">The Pituitary Foundation</a></li> <li>• <a href="#">Addisons Disease</a></li> <li>• <a href="#">Parathyroid UK</a></li> <li>• <a href="#">The Royal Osteoporosis Society</a></li> <li>• <a href="#">Metabolic Support UK</a></li> </ul>
<p>Frailty</p>	<ul style="list-style-type: none"> <li>• <a href="#">Recognising frailty</a></li> <li>• <a href="#">Identifying frailty</a></li> <li>• <a href="#">CLINICAL FRAILTY SCALE</a></li> </ul>
<p>Dementia / Alzheimers</p>	<ul style="list-style-type: none"> <li>• <a href="#">Dementia UK</a></li> <li>• <a href="#">Age UK - Understanding Dementia</a></li> <li>• <a href="#">Delirium Champions</a></li> <li>• <a href="#">Alzheimers Society</a></li> <li>• <a href="#">HRT may benefit women with APOE4 gene and increased Alzheimer's risk (cogora.com)</a></li> <li>• <a href="#">Join Us At The Alzheimer's Dementia &amp; Care Show (ourmailsender4.com)</a></li> </ul>

*Continuation of Long Term Conditions*

Dermatology	<ul style="list-style-type: none"> <li>• <a href="#">British Association of Dermatologists</a></li> <li>• <a href="#">Eczema</a></li> <li>• <a href="#">The British Skin Foundation</a></li> <li>• <a href="#">Acne vulgaris: management</a></li> <li>• <a href="#">The Primary Care Dermatology Society</a></li> <li>• <a href="#">Acne.org</a></li> <li>• <a href="#">Allergy UK</a></li> <li>• <a href="#">Urticaria</a></li> <li>• <a href="#">Hives</a></li> <li>• <a href="#">Sunburn</a></li> <li>• <a href="#">Causes of cancer and reducing your risk</a></li> <li>• <a href="#">What is Rosacea?</a></li> <li>• <a href="#">Rosecea</a></li> <li>• <a href="#">The Rosacea Forum</a></li> <li>• <a href="#">Herpes Viruses Association</a></li> <li>• <a href="#">Shingles</a></li> <li>• <a href="#">Fungal Skin Infection - Foot</a></li> <li>• <a href="#">The Psoriasis Association</a></li> <li>• <a href="#">National Psoriasis Foundation</a></li> <li>• <a href="#">Melanoma</a></li> <li>• <a href="#">Skin Health Information</a></li> <li>• <a href="#">British Association of Plastic Reconstructive and Aesthetic Surgeons - Procedure Guides</a></li> <li>• <a href="#">Warts and verrucae</a></li> <li>• <a href="#">Dermatology</a></li> </ul>
Allergy / Auto-immune / Genetic Conditions	<ul style="list-style-type: none"> <li>• <a href="#">Allergy UK</a></li> <li>• <a href="#">British Society for Rheumatology</a></li> <li>• <a href="#">Addisons Disease</a></li> </ul>
Obesity	<ul style="list-style-type: none"> <li>• <a href="#">Obesity UK</a></li> </ul>
Pain Management	<ul style="list-style-type: none"> <li>• <a href="#">Pain Concern</a></li> </ul>
Osteoporosis / Falls	

*Continuation of Long Term Conditions*

Genomics	<ul style="list-style-type: none"> <li>• <a href="#">NHS England » Whole genome sequencing for children – An information guide for parents, carers and families</a></li> <li>• <a href="#">UK landmark genomic partnership with Thailand to unite against health threats - GOV.UK (www.gov.uk)</a></li> </ul>
Loneliness	<ul style="list-style-type: none"> <li>• <a href="#">Better Health Every Mind Matters Loneliness   Better Health Every Mind Matters   Campaign Resource Centre (dhsc.gov.uk)</a></li> </ul>
Multi-Morbidity	<ul style="list-style-type: none"> <li>• <a href="#">Multimorbidity</a></li> <li>• <a href="#">Multimorbidity / multiple long-term conditions (MLTC)</a></li> </ul>
Minor Illness / First Contact Assessment / OSCE	<ul style="list-style-type: none"> <li>• <a href="#">Fact Sheets - Self Care Forum</a></li> <li>• <a href="#">OSCE Checklists 📄 (mlsend.com)</a></li> <li>• <a href="#">OSCE Flashcards 🩺 (mlsend.com)</a></li> <li>• <a href="#">600+ OSCE Stations ✨ (mlsend.com)</a></li> <li>• <a href="#">Anatomy Flashcards 🫀 (mlsend.com)</a></li> <li>• <a href="#">Health A to Z</a></li> <li>• <a href="#">#EM3: East Midlands Emergency Medicine Educational Media</a></li> <li>• <a href="#">ABDOMINAL SWELLING (cogora.com)</a></li> <li>• <a href="#">EPIGASTRIC PAIN (cogora.com)</a></li> <li>• <a href="#">Arm and Shoulder Pain - Nursing in Practice Reference</a></li> <li>• <a href="#">BLOOD IN URINE (cogora.com)</a></li> <li>• <a href="#">CHRONIC SHORTNESS OF BREATH (cogora.com)</a></li> <li>• <a href="#">Referral criteria from primary care - if possible migraine headache</a></li> </ul>
Other / Case Studies	
Winter / Summer Pressures	<ul style="list-style-type: none"> <li>• <a href="#">cold weather plan for England (outlook.com)</a></li> <li>• <a href="#">Tips for staying warm and well this winter</a></li> </ul>

End of Life Care	
End of Life Care / Bereavement	<ul style="list-style-type: none"> <li>• <a href="#">ReSPECT for healthcare professionals</a></li> <li>• <a href="#">Hospice UK</a></li> <li>• <a href="#">Palliative and End of Life Care Profiles - OHID (phe.org.uk)</a></li> </ul>
Flu / Covid-19 / Monkeypox	
Covid-19	<ul style="list-style-type: none"> <li>• <a href="#">Coronavirus » COVID-19 Guidance Note: COVID Oximetry @home (england.nhs.uk)</a></li> <li>• <a href="#">latest blog explains more about the testing (outlook.com)</a></li> </ul>
Flu	
Long covid	<ul style="list-style-type: none"> <li>• <a href="#">Your Covid Recovery</a></li> <li>• <a href="#">Long Term Effects of Covid</a></li> <li>• <a href="#">Post Covid Syndrome - Long Covid</a></li> <li>• <a href="#">COVID-19 Yorkshire Rehabilitation Screening Tool</a></li> <li>• <a href="#">FOM Guidance</a></li> <li>• <a href="#">Long Covid Toolkit</a></li> <li>• <a href="#">Caring for People with Long Covid (qni.org.uk)</a></li> </ul>
MONKEY POX	

News & Views

<p>Digital News / Remote Consultations / AI</p>	<ul style="list-style-type: none"> <li>• <a href="#">Digital Health News Webinars</a></li> <li>• <a href="#">Digital Health News</a></li> <li>• <a href="#">NHS Digital</a></li> <li>• <a href="#">DigiHealthWell</a></li> <li>• <a href="#">Public Sector Events, Conferences and Training - Inside Government</a></li> <li>• <a href="#">Digital Transformation</a></li> <li>• <a href="#">Your daily news updates from Digital Health (campaign-archive.com)</a></li> <li>• <a href="#">Your daily news updates from Digital Health (campaign-archive.com)</a></li> <li>• <a href="#">Shaping the future of technology in general practice - NHS Digital</a></li> <li>• <a href="#">Digital Health Digest - 27 January 2023 (mailchi.mp)</a></li> </ul>
<p>PSNC News / Pharmacy</p>	<ul style="list-style-type: none"> <li>• <a href="#">National Pharmacy Association</a></li> <li>• <a href="#">Royal Pharmaceutical Society</a></li> <li>• <a href="#">Medicines Learning Portal</a></li> <li>• <a href="#">Specialist Pharmacy Service</a></li> <li>• <a href="#">PSNC Newsletter: 13th January (mailchi.mp)</a></li> <li>• <a href="#">New paper helps pharmacy teams to tackle health inequalities (rpharms.com)</a></li> <li>• <a href="#">All-Party Pharmacy Group publishes new “The Future of Pharmacy Manifesto” report - 23 January 2023 — All Party Pharmacy Group (pharmacyappg.co.uk)</a></li> <li>• <a href="#">PSNC Newsletter: 27th January (mailchi.mp)</a></li> </ul>
<p>Pulse / GP Online / HSJ / NB Medical</p>	<ul style="list-style-type: none"> <li>• <a href="#">GP Online</a></li> <li>• <a href="#">HSJ</a></li> <li>• <a href="#">Pulse Today</a></li> </ul>

Primary Care Update / PCC / PPP	<ul style="list-style-type: none"> <li>• <a href="#">Public Policy Projects News</a></li> <li>• <a href="#">Primary Care Bulletin</a></li> </ul>
Proactive Care	
Kings Fund	<ul style="list-style-type: none"> <li>• <a href="#">The Kings Fund</a></li> <li>• <a href="#">Library services   The King's Fund (kingsfund.org.uk)</a></li> <li>• <a href="#">Health and care explained: your quarterly update (kingsfundmail.org.uk)</a></li> <li>• <a href="#">What can data tell us about the health of the nation? (kingsfundmail.org.uk)</a></li> <li>• <a href="#">Health Management and Policy Alert: 20 January 2023 (kingsfundmail.org.uk)</a></li> <li>• <a href="#">Just launched   Digital technologies: innovating for change (kingsfundmail.org.uk)</a></li> <li>• <a href="#">Health and Wellbeing Bulletin (kingsfundmail.org.uk)</a></li> <li>• <a href="#">Health Management and Policy Alert: 27 January 2023 (kingsfundmail.org.uk)</a></li> <li>• <a href="#">Your leadership update   January 2023 (kingsfundmail.org.uk)</a></li> <li>• <a href="#">Independent health care: what are the trends? (kingsfundmail.org.uk)</a></li> </ul>
Health Care Leaders Newsletters	
World Health Organisation	<ul style="list-style-type: none"> <li>• <a href="#">WHO</a></li> <li>• <a href="#">OpenWHO</a></li> </ul>
IHCT / CCG / STP / Healthier Futures	<ul style="list-style-type: none"> <li>• <a href="#">Black Country &amp; West Birmingham CCG</a></li> <li>• <a href="#">Dudley Integrated Health and Care</a></li> <li>• <a href="#">Home :: Black Country Healthcare NHS Foundation Trust</a></li> <li>• <a href="#">SharePoint</a></li> <li>• <a href="#">Message from Mark Axcell &amp; Staff News (02 February 2023) (sharepoint.com)</a></li> <li>• <a href="#">Message from Mark Axcell &amp; Staff News (19 January 2023) (sharepoint.com)</a></li> <li>• <a href="#">Message from Mark Axcell &amp; Staff News (26 January 2023) (sharepoint.com)</a></li> <li>• <a href="#">Message from Mark Axcell &amp; Staff News (12 January 2023) (sharepoint.com)</a></li> <li>• <a href="#">Issue 30 - Black Country Primary Care Brief (sharepoint.com)</a></li> <li>• <a href="#">Issue 29 - Black Country Primary Care Brief (sharepoint.com)</a></li> <li>• <a href="#">Issue 28 - Black Country Primary Care Brief (sharepoint.com)</a></li> <li>• <a href="#">Issue 27 - Black Country Primary Care Brief (sharepoint.com)</a></li> <li>• <a href="#">Issue 26: Black Country Primary Care Brief (sharepoint.com)</a></li> </ul>

*Continuation of News & Views*

NHSI / NHSE	
University / Student Nurses	
Medisa / Univadis / Geeky Medics / GP Notebook / Medscape	<ul style="list-style-type: none"> <li>• <a href="#">Medisa</a></li> <li>• <a href="#">Geeky Medics</a></li> <li>• <a href="#">Medscape Nurses</a></li> <li>• <a href="#">GP Notebook</a></li> <li>• <a href="#">Geeky Medics - YouTube</a></li> <li>• <a href="#">GPnotebook quick update (contains promotional information from Johnson &amp; Johnson: New NRT Webinar- Book Your Place Today.) (mailchi.mp)</a></li> <li>• <a href="#">Latest videos on GPnotebook TV (mailchi.mp)</a></li> </ul>
Nurse Guidelines	
The Health Foundation	<ul style="list-style-type: none"> <li>• <a href="#">The Health Foundation</a></li> <li>• <a href="#">Newsletter: 2023 – plans, funding and opportunities in the year ahead (healthfdn.org.uk)</a></li> </ul>
The Health Care Leaders Update	<ul style="list-style-type: none"> <li>• <a href="#">Health Care Leader News</a></li> </ul>
Practice Index	
Innovation Agency	<ul style="list-style-type: none"> <li>• <a href="#">Innovation Agency Exchange</a></li> </ul>
RCN	<ul style="list-style-type: none"> <li>• <a href="#">RCN</a></li> <li>• <a href="#">RCN Magazines: beat burnout   long COVID support   how to talk to patients about strike action</a></li> </ul>
Cavell Trust	<ul style="list-style-type: none"> <li>• <a href="#">December News</a></li> </ul>
Nursing in Practice / Nursing Standard / Independent Nurse	<ul style="list-style-type: none"> <li>• <a href="#">Nursing Times</a></li> <li>• <a href="#">JCN Newsletter</a></li> <li>• <a href="#">Nursing in Practice Bulletin</a></li> <li>• <a href="#">Independent Nurse</a></li> <li>• <a href="#">Nursing in Practice - Clinical</a></li> <li>• <a href="#">Nursing in Practice - Community Bulletin</a></li> <li>• <a href="#">Wound Care Today</a></li> <li>• <a href="#">The energy crisis: a public health emergency (independentnurse.co.uk)</a></li> </ul>

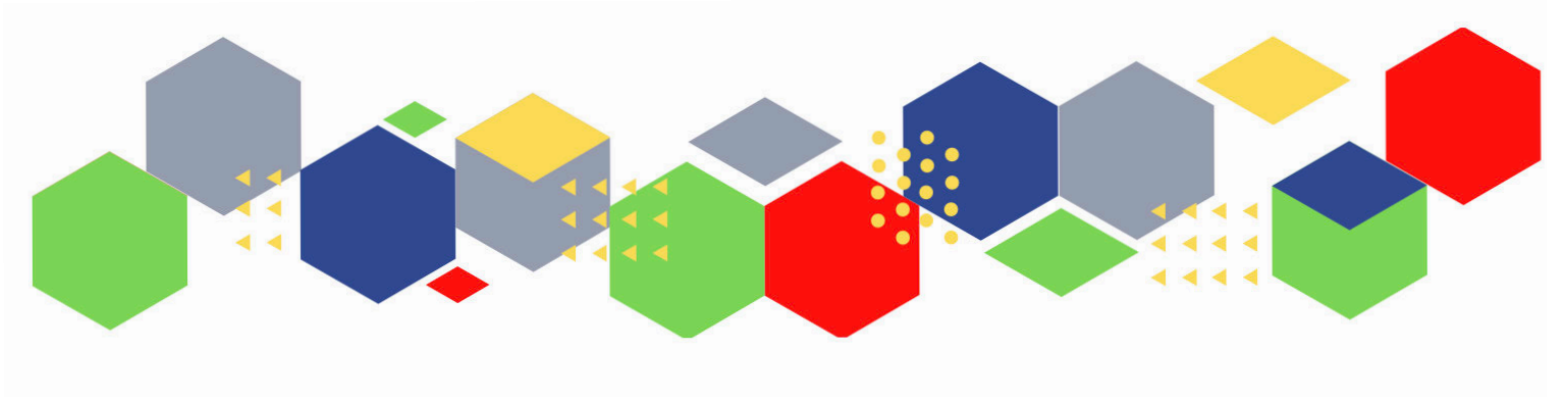


*Continuation of News & Views*

QNI	<ul style="list-style-type: none"> <li>• <a href="#">QNI</a></li> <li>• <a href="#">Talk To Us @ – The Queen's Nursing Institute (qni.org.uk)</a></li> <li>• <a href="#">QNI publishes community practice teaching standards (cogora.com)</a></li> <li>• <a href="#">Community Nursing Practice Teaching Standards – The Queen's Nursing Institute (qni.org.uk)</a></li> </ul>
NMC	<ul style="list-style-type: none"> <li>• <a href="#">NMC</a></li> <li>• <a href="#">Did you know pelvic girdle pain affects more than one in five women during and after pregnancy? (news-nmc.org.uk)</a></li> </ul>
CMO / CNO	
HRA	<ul style="list-style-type: none"> <li>• <a href="#">HRA Latest</a></li> </ul>
Nice	<ul style="list-style-type: none"> <li>• <a href="#">NICE</a></li> <li>• <a href="#">NICE News for Health and Social Care   January 2023 (mailchi.mp)</a></li> </ul>
RCGP / BMA / The Lancet	<ul style="list-style-type: none"> <li>• <a href="#">The Lancet</a></li> <li>• <a href="#">British Medical Journal</a></li> <li>• <a href="#">Royal College of General Practitioners</a></li> </ul>
Nuffield Health	
Midlands Academic Health Science Network	<ul style="list-style-type: none"> <li>• <a href="#">WMAHSN Network</a></li> <li>• <a href="#">WMAHSN January 2023 update (mailchi.mp)</a></li> </ul>
Healthwatch	<ul style="list-style-type: none"> <li>• <a href="#">Healthwatch</a></li> </ul>
CPD News	<ul style="list-style-type: none"> <li>• <a href="#">CPD News</a></li> </ul>
Other	<ul style="list-style-type: none"> <li>• <a href="#">Patients Association</a></li> <li>• <a href="#">Innovation Hub</a></li> </ul>

Free Training / Webinars / Meetings / CPD	
Development / Information and Knowledge	<ul style="list-style-type: none"> <li>• <a href="#">Red Whale Training</a></li> <li>• <a href="#">Issues &amp; Answers</a></li> <li>• <a href="#">Population health measures aimed at the worst health outcomes (kingsfundmail.org.uk)</a></li> <li>• <a href="#">Primary Care Improvement Community Bringing Quality Improvement to Life series March 2023</a></li> <li>• <a href="#">It's here! The Best Practice London conference programme (bestpracticeshow.co.uk)</a></li> <li>• <a href="#">Professional Perspectives   GPnotebook Resources</a></li> <li>• <a href="#">Wound Care Today Conference 2023 - Milton Keynes - Wound Care Today (woundcare-today.com)</a></li> <li>• <a href="#">Early bird tickets: Integrated care summit (kingsfundmail.org.uk)</a></li> <li>• <a href="#">Best Practice London 8-9 March 2023</a></li> <li>• <a href="#">FREE IBD CPD Modules Part 1 &amp; 2</a></li> </ul>
Free to RCN	<ul style="list-style-type: none"> <li>• <a href="#">RCNi events   RCNi</a></li> </ul>
MIMMs Learning	
Eventbrite	
e-Learning for Health	<ul style="list-style-type: none"> <li>• <a href="#">Health Inequalities - elearning for healthcare (e-lfh.org.uk)</a></li> </ul>
YouTube	<ul style="list-style-type: none"> <li>• <a href="#">NHS England</a></li> <li>• <a href="#">Black Country Healthcare - YouTube</a></li> </ul>

Future Proof Health Training	<ul style="list-style-type: none"> <li>• <a href="#">Training</a></li> </ul>
BCWB Training Hub	<ul style="list-style-type: none"> <li>• <a href="#">Latest news from the Black Country Training Hub (campaign-archive.com)</a></li> </ul>
Evidence based care	
Podcasts	<ul style="list-style-type: none"> <li>• <a href="#">The Nursing Handover Podcast</a></li> <li>• <a href="#">Nursing Standard Podcasts</a></li> <li>• <a href="#">Nursing Matters</a></li> <li>• <a href="#">Welcome to the BJN Podcast</a></li> <li>• <a href="#">Cygnet Health Care Podcast</a></li> <li>• <a href="#">EBN podcast</a></li> <li>• <a href="#">This Is Nursing</a></li> <li>• <a href="#">Teach me, I'm a Nurse</a></li> <li>• <a href="#">Past Caring</a></li> <li>• <a href="#">RCGP eLearning podcast</a></li> <li>• <a href="#">The BMJ Podcast</a></li> <li>• <a href="#">Primary Care Network podcasts</a></li> <li>• <a href="#">The Professional Support Unit's Pandemic Podcast</a></li> <li>• <a href="#">The Next GenCast</a></li> </ul>
Apps	
Area Bulletins	
Research	<ul style="list-style-type: none"> <li>• <a href="#">Science Daily</a></li> <li>• <a href="#">Multimorbidity / multiple long-term conditions (MLTC)</a></li> <li>• <a href="#">National Institute for Health and Care Research</a></li> <li>• <a href="#">HRA Latest</a></li> </ul>
Blogs/Vlogs	<ul style="list-style-type: none"> <li>• <a href="#">Blog   NB Medical</a></li> </ul>
Freebies	<ul style="list-style-type: none"> <li>• <a href="#">Blue Light Card</a></li> </ul>
Campagne Links	
Other	



Thank you for reading Future Proof Health's weekly news!

If you missed past issues, please click [here](#) to view them

More information can be found on our website, [here](#)

Don't forget to like us on [Facebook](#) & Follow us on [Twitter](#)

