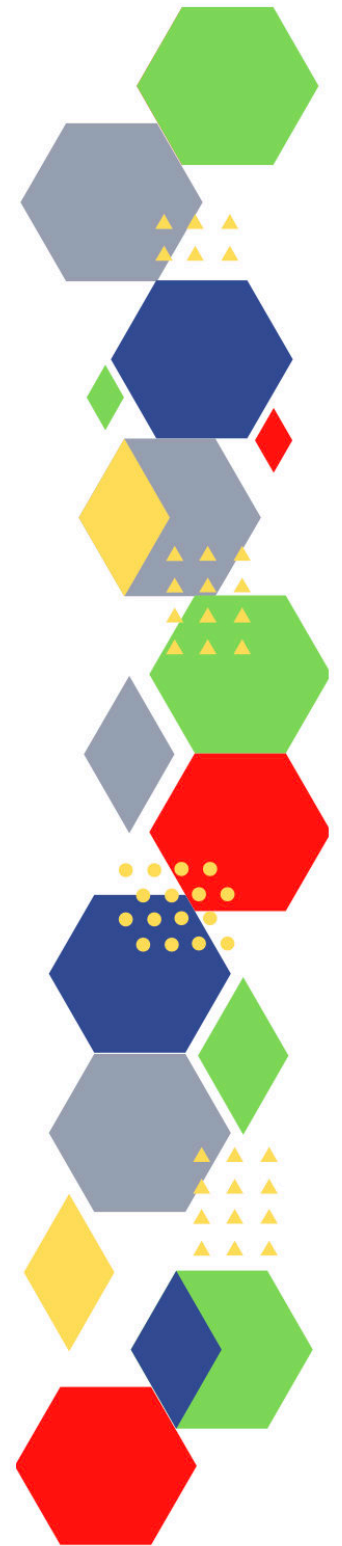




Future Proof Health Presents

Weekly News

2nd March 2023



Communication	
Communication with Patients	<ul style="list-style-type: none"> • Staff respect
Communication within Teams	
Consent / Advocacy / IMCA	
People and Personal Development	
Personal / People Development / Leadership	<ul style="list-style-type: none"> • Accountability and delegation in practice • Climbing the leadership ladder: Why female nurses can struggle to reach the top • Facilitation skills Training • Tech transformation disrupts leadership styles (kingsfundmail.org.uk) • Supporting clinical leadership in virtual wards: a guide for integrated care system clinical leader (kingsfundmail.org.uk) • Leading well for staff health and wellbeing in the NHS The King's Fund (kingsfund.org.uk) • Long Covid and Employment • Exploring mental health at work
NHS Employers / HR / NHS Pension	<ul style="list-style-type: none"> • NHS Employers • Pensions Online
Health, Safety & Security	
	<ul style="list-style-type: none"> • NPSA • Control of Substances Hazardous to Health (COSHH) • Weekly Digest Newsletter: 21 February 2023
Gov UK - NHS	
CQC	<ul style="list-style-type: none"> • GP mythbusters • YouTube - Care Quality Commission • What Can Providers Expect From CQC Inspections? (mailchi.mp)
MIMS	<ul style="list-style-type: none"> • Prescribing Update • 11 new products View new products tracker » • 5 new generic products View new generics tracker » • 20 new drug shortages View shortages tracker » • 27 price changes View price changes tracker » • 4 new product indications View new and deleted indications tracker » • 17 deleted products View deleted products tracker »
Drug / Device Alerts (MHRA)	<ul style="list-style-type: none"> • Drug Safety Update (mhradrugsafety.org.uk)

Antibiotic steward-ship / Anti-microbial resistance	
Vaccines / Medications / Prescribing	<ul style="list-style-type: none"> • Protocol for ordering, storing and handling vaccines • A Competency Framework for all Prescribers • Non-medical prescribing • The Human Medicines Regulations 2012 • RCN - Non-medical prescribers • Royal Pharmaceutical Society • Standards for prescribing • Clinical Negligence Scheme for General Practice • Home - electronic medicines compendium (emc) • Drug shortages - live tracker MIMS online • NHS England » Pharmacy Manual
Health Protection Review	
Emergency Situations	<ul style="list-style-type: none"> • Resuscitation Council UK
Infection Control / Infection Statics	<ul style="list-style-type: none"> • NHS England » National infection prevention and control
Safe Guarding	<ul style="list-style-type: none"> • Female genital mutilation (FGM) • PREVENT • Child protection system in the UK • Safeguarding Adults • Safeguarding children: detailed information • Domestic abuse victim services, England and Wales: 2022 (www.gov.uk) • Dudley Financial Abuse Alliance - September 2022 (govdelivery.com) • Wolverhampton Safeguarding Together • World Social Work Month (basw.co.uk) • Abuse within Primary Care - Menlo Park Recruitment (outlook.com)
Practice Policies: Practice Management / Accountability Duty of Candour	<ul style="list-style-type: none"> • Menopause Awareness training via MS Team (outlook.com) • Menopause and the workplace policy (outlook.com) • Introducing Compliments Manager to the Compliance Package (outlook.com)
Audit	
Information Governance / Record Keeping	<ul style="list-style-type: none"> • Resources to support staff with providing record access to patients - NHS Digital

Quality & Service Improvement

Quality, Service & Improvement	<ul style="list-style-type: none"> • The PRSB • General Practice Assessment Questionnaire (GPAQ) • Healthwatch • NHS Five Year Forward View • General Practice Forward View • NMC • Dr Jon Griffiths Blog • NHS Confed • Health Quality Improvement Partnership
Roles in General Practice Including AHP	<ul style="list-style-type: none"> • Standards for nursing associates • GP mythbuster 57: Health Care Assistants in General Practice • NHS England » Allied Health Professions • Expanding volunteer support in the allied health professions to start an NHS career (kingsfundmail.org.uk) • Read the case study (kingsfundmail.org.uk) • GP practice team (phe.gov.uk) • animations about different roles (outlook.com) • Patterns of employment amongst Nursing Associates: Evidence from the Electronic Staff Record (kcl.ac.uk)
Revalidation	
Personal Practice & Development	
Practice Management	<ul style="list-style-type: none"> • Institute of General Practice Management • Practice Index • The menopause minefield (outlook.com) • Menopause and the workplace policy (outlook.com) • Introducing Compliments Manager to the Compliance Package (outlook.com)
EMIS / System One / IT	
Recruitment Employment / Retirement / Legacy Nursing	
Supporting International Recruitment in the NHS	<ul style="list-style-type: none"> • NHS Pastoral Care Quality Award (outlook.com) • Code of Practice (outlook.com) • 'Becoming a mental health nurse in the UK' (outlook.com)

NHS Staff Self Care & Resilience	<ul style="list-style-type: none"> • Samaritans • Mental Health at work • Calm • Supporting our NHS people • The Hub :: Black Country Healthcare NHS Foundation Trust • Long Covid and Employment • Leading well for staff health and wellbeing in the NHS The King's Fund (kingsfund.org.uk)
Practice Transformation / Innovation Agency	<ul style="list-style-type: none"> • NHS Providers • Virtual Wards (outlook.com) • Enhanced Access (phe.gov.uk)/ video with GP, Dr Mohit Mandiratta (youtube.com) • Primary care central hub (outlook.com) • GP access toolkit for primary care colleagues (outlook.com) • Creating health and wealth by stealth - Locality
Future of NHS / General Practice / NHS Recovery	<ul style="list-style-type: none"> • NHS England • NHS England » Primary care • NHS mandate 2022 to 2023 • Changes to NHS budget • Register with a GP Surgery • Press release CIPFA publishes interesting care report
NHS Resolution	
NHS 75	<ul style="list-style-type: none"> • Parkrun for the NHS (outlook.com) • NHS 75 comms toolkit
ICS / ICB / ICP / PCN Commissioning	<ul style="list-style-type: none"> • NHS England » Integrated care • NHS England » Case studies to support integrated care systems to adopt and spread innovation
QOF / PHOF / DES / LES / NHS Contract / CQRS / CQUIN	
Leadership / Innovation	
Greener NHS	<ul style="list-style-type: none"> • Greener Allied Health Professional hub (england.nhs.uk) • High quality, low-carbon respiratory care • Supporting patients with inhaler choices

Personalised Care	
Personalised Care / Self Care / Social Prescribing / Health Coaching	<ul style="list-style-type: none"> • Self Care forum • Personalised Care Institute • Personalised care • Social Prescribing Academy
Group consultation	
Working Differently	
Shared Decision Making	<ul style="list-style-type: none"> • Personalised Care Institute
Equality & Diversity	
Equality & Diversity	<ul style="list-style-type: none"> • Public Health Profiles • Home page - NHS - Race and Health ObservatoryNHS – Race and Health Observatory (nhsrho.org) • 10 steps hospitals can take to tackle ethnic inequalities in waiting lists - NHS - Race and Health ObservatoryNHS – Race and Health Observatory (nhsrho.org) • Improving health and care- Learn more (nhsrho.org) • Empowering Vulnerable Communities Learn more (nhsrho.org) • Innovating for all- Learn more (nhsrho.org) • Creating equitable environments Learn more (nhsrho.org) • Collaborating globally -Learn more (nhsrho.org)
Inclusion Health	<ul style="list-style-type: none"> • Health Creation Academic Network • Inequality on the inside
Poverty / Homelessness	<ul style="list-style-type: none"> • Crisis • This is Poverty • integrated health and social care for people experiencing homelessness (nice.org.uk) • Overview Integrated health and social care for people experiencing homelessness Guidance NICE
Population Health / Health Communities	<ul style="list-style-type: none"> • Mosques across the country are hosting a series of community health days (createsend1.com)
Thrive Into Work	<ul style="list-style-type: none"> • Thrive into Work • Thrive into Work Referral form
Health Inequalities	<ul style="list-style-type: none"> • NHS News • Health inequalities – from evidence to action

Trans / Non-binary Health / LGBTQ+	<ul style="list-style-type: none"> • LGBT Foundation • Surgery staff grab sheet (squarespace.com) • Trans inclusive organisations — TransActual • TransActual - Healthcare • CliniQ • LGBTQ+ staff and patients deserve better from the NHS (kingsfundmail.org.uk)
Migrant / Refugee Health	<ul style="list-style-type: none"> • THE REFUGEE & MIGRANT CENTRE
Traveller / Gypsy / Romany Health	<ul style="list-style-type: none"> • Gypsy Roma and Traveller History and Culture The Traveller Movement • Friends, Families and Travellers (gypsy-traveller.org)
Veterans Health	<ul style="list-style-type: none"> • The first call for help takes courage
Voluntary / Charity	
Management of Emergency Situations	
Management of Emergency Situations	
111 / Emergency Care	
First Contact	<ul style="list-style-type: none"> • Supporting general practice – Common pitfalls • Paediatrics for Primary Care (and anyone else) (gppaedstips.blogspot.com)
Red Flags	
Sepsis	<ul style="list-style-type: none"> • Sepsis: recognition, diagnosis and early management • Sepsis guidance implementation advice for adults • Sepsis in Children • Sepsis Trust • quick SEPSIS RELATED ORGAN FAILURE ASSESSMENT • ‘Sepsis and systemic or disseminated infections’ (outlook.com)
Therapeutic Monitoring	
OSCE	<ul style="list-style-type: none"> • Geeky Medics • Abdominal Examination - Demonstration - YouTube • Cardiovascular Examination - Demonstration - YouTube • Respiratory Examination - Demonstration - YouTube • Physical Diagnosis Skills - University of Washington School of Medicine

Role Specific	
Cervical Cytology	<ul style="list-style-type: none"> • Guide to the interim assessment • British Association for Cytopathology • Lab Tests Online
Ear Care	<ul style="list-style-type: none"> • Ear Care Centre • RNID
Wound Management / Compression	<ul style="list-style-type: none"> • Microworld • Tissue Viability Society • The BLS • My Microworld Online
Minor Surgery	
Obtaining Samples / Results	<ul style="list-style-type: none"> • Lab Tests Online
Health Promotion / Health Screening	
Health Promotion / Population Health	<ul style="list-style-type: none"> • Better Health • SHAPE Strategic Health Asset Planning and Evaluation (shapeatlas.net)
Health Screening	<ul style="list-style-type: none"> • PHE Screening • Abdominal aortic aneurysm screening: standards report 2021 to 2022 (outlook.com) • NHS screening programmes in England: 2020 to 2021 - GOV.UK (kingsfundmail.org.uk) • NHS England » Women urged to take up NHS breast screening invites (createsend1.com) • Breast Screening Programme, England, 2021-22 - GOV.UK (outlook.com) • NHS England » New NHS campaign urges people to use their bowel cancer home testing kit
PHE / OHID / UKHSA	<ul style="list-style-type: none"> • Knowledge & Library Services • Campaign Resources • Public Health Profiles • Health Publications • Health Profile for England 2021 • English indices of deprivation 2019
NHS Health Check	<ul style="list-style-type: none"> • NHS Health Check

UK GOV Flu / Covid / Bird Flu	<ul style="list-style-type: none"> • National flu and Covid-19 surveillance report: 9 February 2023 (week 6) (kingsfundmail.org.uk) • social media assets to inform public Avian Flu (outlook.com) • Q&A on the possible impacts of avian influenza on humans (outlook.com) • Coronavirus (COVID-19) Infection Survey, UK: 17 February 2023 - GOV.UK (outlook.com) • National flu and COVID-19 surveillance reports: 2022 to 2023 season - GOV.UK (outlook.com) • Bird flu (avian influenza): cases in wild birds (outlook.com) • Avian: GB disease surveillance and emerging threats reports - GOV.UK (outlook.com) • Avian influenza (bird flu) in Europe, Russia and the UK - GOV.UK (outlook.com)
UK GOV - General Practice / Primary Care	<ul style="list-style-type: none"> • GP out-of-hours syndromic surveillance: weekly bulletins for 2023 - GOV.UK (outlook.com) • GP in-hours: weekly bulletins for 2023 - GOV.UK (outlook.com) • Primary Care Workforce Quarterly Update, 31 December 2022 - GOV.UK (outlook.com) • Patients Registered at a GP Practice, February 2023 - GOV.UK (outlook.com)
UK GOV - Secondary Care	
UK GOV Deaths / Suicide / Palliative Care / Mortality / End of Life	<ul style="list-style-type: none"> • Deaths registered weekly in England and Wales, provisional: week ending 3 February 2023 (kingsfundmail.org.uk) • Weekly all-cause mortality surveillance: 2022 to 2023 - GOV.UK (outlook.com) • Deaths registered weekly in England and Wales, provisional: week ending 3 February 2023 - GOV.UK (outlook.com)
UK GOV - LTC - including cancer	<ul style="list-style-type: none"> • Cancer Survival in England, cancers diagnosed 2016 to 2020, followed up to 2021 - GOV.UK (outlook.com) • Primary Care Dementia Data, January 2023 - GOV.UK (outlook.com)
Surveillance / Syndromic Surveillance	<ul style="list-style-type: none"> • Syndromic surveillance: weekly summaries for 2023 - GOV.UK (outlook.com) • Syndromic surveillance: systems and analyses
Ambulance / Remote Health / 111 / Urgent Care / A&E	<ul style="list-style-type: none"> • Accident and emergency (A&E) waiting times (kingsfundmail.org.uk) • National ambulance syndromic surveillance: weekly bulletins 2023 - GOV.UK (outlook.com) • Emergency department: weekly bulletins for 2023 - GOV.UK (outlook.com) • Remote health advice: weekly bulletins for 2023 - GOV.UK (outlook.com)
UK GOV - Mental Health / Learning Difficulties	<ul style="list-style-type: none"> • Learning Disability Services Monthly Statistics, AT: January 2023, MHSDS: November 2022 Final - GOV.UK (outlook.com)
Addiction/Smoking	<ul style="list-style-type: none"> • Drink Coach • Stop smoking interventions and services • Talk to Frank • £421 million to boost drug and alcohol treatment across England - GOV.UK (www.gov.uk) • No Smoking Day (8 March) • Extra funding for drug and alcohol treatment: 2023 to 2025 - GOV.UK (www.gov.uk)

<p>UK GOV Infectious Disease Monitoring / NOIDS</p>	<ul style="list-style-type: none"> • NOIDs guidance (outlook.com) • Foot and mouth disease in North Africa and the Middle East (outlook.com) • Carbapenemase-producing Gram-negative bacteria: laboratory surveillance - GOV.UK (outlook.com) • Notifiable diseases: causative agents reports for 2023 - GOV.UK (outlook.com) • Notifiable diseases: last 52 weeks - GOV.UK (outlook.com) • Group A streptococcal infections: activity during the 2022 to 2023 season - GOV.UK (outlook.com) • Diphtheria: cases among asylum seekers in England, 2022 and 2023 - GOV.UK (outlook.com) • Meningococcal disease: laboratory-confirmed cases in England in 2021 to 2022 - GOV.UK (outlook.com) • National norovirus and rotavirus surveillance reports: 2022 to 2023 season - GOV.UK (outlook.com) • Notifiable diseases causative agents: week 6 (week ending 12 February 2023) (kingsfundmail.org.uk) • existing guidance on managing norovirus outbreaks to help stop the spread of infection (outlook.com) • Strep A • Notifiable diseases: weekly reports for 2023 - GOV.UK (outlook.com)
<p>Immunisation / Travel Health</p>	
<ul style="list-style-type: none"> • Joint Committee on Vaccination and Immunisation • Immunisation against infectious disease • West Midlands Immunisation Service • Vaccination of individuals with uncertain or incomplete immunisation status • Immunisation Queries: Immunisation information for Health Care Services within the West Midlands area • Immunisation • Pop-up clinics available (blackcountryics.org.uk) • NHS Midlands team developed a web page for all materials • Black Country resources for flu • Herpes zoster (shingles) immunisation programme 2022 to 2023: evaluation reports - GOV.UK (outlook.com) • Pertussis immunisation in pregnancy: vaccine coverage (England) - GOV.UK (outlook.com) 	
<p>Flu</p>	<ul style="list-style-type: none"> • Flu and flu vaccinations • The national influenza immunisation programme 2021 to 2022 • Flu vaccines for the 2021 to 2022 season poster • Appendix C: Flu vaccinator competency assessment tool • Healthcare assistants and flu vaccinations
<p>Covid Vaccine</p>	<ul style="list-style-type: none"> • Greenbook COVID-19 chapter 14a • COVID-19 Vaccine Moderna e-learning now available • GP COVID-19 vaccine dashboard • Updates made to the COVID-19 vaccination learning programme • Millions of people get boosted against COVID-19 - GOV.UK (www.gov.uk)

Children	<ul style="list-style-type: none"> • Child Health Information Services Local Government Association • Childhood vaccines: parental attitudes survey 2022 findings
Adults	<ul style="list-style-type: none"> • Immunisation patient group direction (PGD) templates • Shingles immunisation programme: introduction of Shingrix® letter
Vaccine Update	<ul style="list-style-type: none"> • Vaccine update: issue 332, October 2022, flu special edition - GOV.UK (www.gov.uk) • Vaccine update: issue 333, December 2022 - GOV.UK (www.gov.uk) • Vaccine update: issue 334, January 2023 (outlook.com)
PGD	
Travel Health	<ul style="list-style-type: none"> • Travel Health Pro • Fit for Travel • Travel Health • Jane Chiodini • Corona.Help
Mental Health / Learning Disability / Disability	
Mental Health	<ul style="list-style-type: none"> • Mental Health • Mental Health UK • Mind • Place2b • Rethink Mental Illness • Young Minds • Every Mind Matters • Calm • Headspace • Better Health - Every Mind Matters - Resources • ZSA Training • NHS > Mental Health • Reflections on the Joint Committee's report on the Draft Mental Health Bill 2022 • NHS Talking Therapies (outlook.com) • Better Health - Every Mind Matters (phe.gov.uk) • Loneliness (outlook.com) • Community mental health transformation team event (icb.nhs.uk) • NHS England » Mental Health, Learning Disability and Autism Inpatient Quality Transformation Programme

Learning Disability	<ul style="list-style-type: none"> • Learning Disabilities • Learning Disability England • Mencap • Bild • Autism
Disability (Inc. hearing and visual)	<ul style="list-style-type: none"> • Disability Rights UK • Disability Matters • RNID - National hearing loss charity • Spokzpeople • Sight Loss Data Tool RNIB • Making GP practices deaf-friendly Healthwatch
From Cradle to...	
Infant Health	<ul style="list-style-type: none"> • Tommys • First Steps Nutrition Trust • Bliss • ICON Toolkit • Sandwell - BC - ICB Primary Care - 7 minute briefing • codeine and dihydrocodeine during breastfeeding (gpnotebook.com) • Health visitor service delivery metrics experimental statistics: annual data 2021 to 2022 - GOV.UK (outlook.com) • Breastfeeding at 6 to 8 weeks after birth: annual data 2021 to 2022 - GOV.UK (outlook.com) • Child development outcomes at 2 to 2 and a half years: annual data 2021 to 2022 - GOV.UK (outlook.com)
Child Health	<ul style="list-style-type: none"> • Unicef • Health Professional Academy • Premature Babies • Child and Maternal Health • Women and Child First • Child Health Information Services • Place2b • Childhood eczema • Childhood asthma • Paediatrics for Primary Care (and anyone else) (gppaedstips.blogspot.com) • Barnardos • Childrens Society • Action for Children • Community Children's Nurse Network Reaches New Milestone – The Queen's Nursing Institute (qni.org.uk)
Adolescent Health	<ul style="list-style-type: none"> • Adolescent Health Programme • Society for Adolescent Health and Medicine • Young Minds

<p>Mens Health</p>	<ul style="list-style-type: none"> • Mens Health Forum • Mens Health Month • Mens health.org • Mens Health UK • Men and mental health • Men's Mental Health Awareness • Prostate Cancer UK • Orchid Fighting Male Cancer • Prostate Cancer UK Facebook Page • Movember • Prostate Cancer UK Newsletter • Air pollution in London linked to high blood pressure in teenagers (cogora.com)
<p>Women's Health</p>	<ul style="list-style-type: none"> • Womens Health Concern • Well Being of Women • Coppa Feel • Menopause Matters • The Menopause Charity • Royal College of Obstetricians and Gynaecologists - Guidelines • Pelvic Partnership • CRUK - Womens Cancer • Breast Cancer Now • Foundation for Women's Cancer • Eve Appeal • Ovarian.Org • Jo's Trust • Well Spring • Know your Lemons • British Menopause Society - www.thebms.org.uk • NHS - www.nhs.uk/conditions/menopause • Henpicked - henpicked.net • The Menopause Exchange - www.menopause-exchange.co.uk • Women's Health Concerns - www.womens-health-concern.org • Menopause Matters - www.menopausematters.co.uk • The Daisy Network - www.daisynetwork.org • Dr Louise Newson's Menopause Doctor - www.menopausedoctor.co.uk • Manage My Menopause - www.managemymenopause.co.uk/menopause-advice • Menopause Support - menopausesupport.co.uk • Bourne2Care • How to manage genitourinary symptoms of menopause (cogora.com) • Hundreds of thousands of women experiencing menopause symptoms to get cheaper HRT - GOV.UK (www.gov.uk) • Overview Menopause: diagnosis and management Guidance NICE • GPnotebook focus on women's health (contains promotional information) (mailchi.mp) • Women's Health Strategy (www.gov.uk) • self-care factsheet (selfcareforum.org) • HRT supply issues continue (mims.co.uk) • New scheme will provide a year of HRT for price of two prescription charges (independentnurse.co.uk)

<p><i>Women's health continued</i></p>	<ul style="list-style-type: none"> • How to manage genitourinary symptoms of menopause (cogora.com) • Vaginal atrophy: what is it and how can it be treated? (practicenursing.com) • NICE guidance updates criteria for diagnosis of UTI in women (cogora.com) • Tampon Tax Fund evaluation design report (outlook.com) • NEWS FOCUS (practicenursing.com) • Women and migraines: the hormone connection (independentnurse.co.uk) • NHS England » Women urged to take up NHS breast screening invites
<p>The Older Population</p>	<ul style="list-style-type: none"> • BGS • Ageing Better • Delirium Champions - YouTube • "The crisis in the NHS is largely a crisis in older people's preventive care, and if we're to avoid another catastrophic winter in nine months' time we need to act now to fix it" warns Age UK
<p>Carers / Social Care / Care Homes</p>	<ul style="list-style-type: none"> • The Care Provider Alliance • Skills for Care • The Care Workers' Charity • Supporting Adult Carers • The Care UK • County Councils Network • UK Care Week • Join Us At The Alzheimer's Dementia & Care Show (ourmailsender4.com) • The Carer Digital - Issue #136 by The Carer - Issuu (outlook.com) • BREAKING NEWS from The Carer (ourmailsender4.com) • Adult Social Care Update
<p>Young Carers</p>	
<p>Family Planning & Sexual Health</p>	
<p>Family Planning</p>	<ul style="list-style-type: none"> • Faculty of Sexual and Reproductive Healthcare Education and Training
<p>Reproductive</p>	<ul style="list-style-type: none"> • Tommys
<p>Sexual Health / Sexual Abuse</p>	<ul style="list-style-type: none"> • Sexual and Reproductive Health Profiles • FSRH Education & Training • Sexual health
<p>Maternity / Neonate health</p>	<ul style="list-style-type: none"> • chickenpox in pregnancy (gpnotebook.com)

Care of Patients with Long Term Conditions

LTC	<ul style="list-style-type: none"> • Physical Activity for the Prevention and Management of Long-Term Conditions • Health A to Z
Diabetes & Pre-Diabetes	<ul style="list-style-type: none"> • Mumoactive • The mySugr App • PCDS Entry level module series - Foot Check • Type 2 diabetes in adults: management • Diabetes on the Net Online diabetes journals, education and resources for healthcare professionals. • Focus on: Ramadan GPnotebook Resources • Biosimilar insulin in practice Podcast • Diabetes and Ramadan Fasting Diabetes UK • SWBCCG Summary Guidance Diabetes Ramadan • Diabetes and Ramadan: Practical Guidelines 2021 • IDF-DAR Practical Guidelines 2021 • Recommendations for Management of Diabetes During Ramadan • Ramadan and Diabetes - Fasting During Ramadan 4 (bing.com)
Respiratory	<ul style="list-style-type: none"> • Spirometry: step by step • ARTP • British Lung Foundation • The Primary Care Respiratory Society • Respiratory – RespiMat® patient resources Boehringer Ingelheim (boehringer-ingelheim.com) • Respiratory News & Advice (nursinginpractice.com) • Dudley pulmonary rehab - Template PI (dgft.nhs.uk) • The triple burden of flu, RSV and COVID-19 - UK Health Security Agency (blog.gov.uk) (outlook.com) • NHS England » RightCare community-acquired pneumonia scenario
COPD	<ul style="list-style-type: none"> • Right Breathe • GOLD COPD 2022 strategy Independent professional body guideline Guidelines
Asthma	<ul style="list-style-type: none"> • Asthma UK • Asthma: diagnosis, monitoring and chronic asthma management • Global Initiative for Asthma • British guideline on the diagnosis and pharmacological management of asthma in children • British Thoracic Society guidelines for home oxygen use in adults: accredited by NICE • SIGN and BTS management of asthma in children guideline Independent professional body guideline Guidelines • new information on inhaler choices (createsend1.com) • Delivering high quality, low carbon respiratory care (createsend1.com) • Inhaler choices (asthma.org.uk) • NHS England » RightCare asthma scenario

Continuation of Long Term Conditions

Hypertension	<ul style="list-style-type: none"> • British Heart Foundation • Blood Pressure UK • Hypertension in adults: diagnosis and management • Hypertension in adults: diagnosis and treatment • Hypertension: symptoms to look out for and treatment options (rcni.com)
CVD/AF/DVT	<ul style="list-style-type: none"> • QRISK®3-2018 risk calculator • Heart Rhythm Alliance • CVD risk assessment and management • NHS lipid management pathway NHS guideline Guidelines • Act F.A.S.T – Stroke campaign
Heart Failure	<ul style="list-style-type: none"> • British Heat Foundation • British Society Guidelines • Home - Pumping Marvellous • Heart Failure UK Guidelines
Cancer / Oncology	<ul style="list-style-type: none"> • Surviving Thyroid Cancer • Help Us Help You - Lung Cancer Symptoms • Breast Cancer Now • Macmillian • Bowel Cancer UK • Brain Trust • CRUK • Action Cancer • Foundation for Women's Cancer • NHS England » Cancer • For healthcare professionals - Pancreatic Cancer UK (outlook.com) • Information in different languages about cancer signs and symptoms (icb.nhs.uk)
Chronic Kidney Disease	<ul style="list-style-type: none"> • Kidney.Org • Kidney Quality Improvement Partnership
Liver Disease	<ul style="list-style-type: none"> • British Liver Trust • Liver Research • BRITISH ASSOCIATION FOR THE STUDY OF THE LIVER • LIVERnORTH • LIVER DISEASE AND CIRRHOSIS

Continuation of Long Term Conditions

Blood Disorders	<ul style="list-style-type: none"> • Blood Cancer UK • UK Thalassaemia Society • The ITP Support Association • UK-ITP Paediatric ITP Registry • The Haemophilia Society • UK MDS Forum • Pernicious Anaemia Society • Haemochromatosis UK • NHS Blood and Transplant • Blood and Transplant Materials • Digital care plans can transform NHS services for sickle cell patients
G.I	<ul style="list-style-type: none"> • GIST Cancer UK • Pernicious Anaemia Society • Crohns and Colitis • guidance for monitoring in Barrett's oesophagus (gpnotebook.com)
ENT	
G.U	
ME / CFS / Fibromyalgia	<ul style="list-style-type: none"> • ME Association • ME Research • Action for M.E • Fibromyalgia Action UK • Fibromyalgia UK • Home - Fibromyalgia Awareness UK (fibroawarenessuk.org) • Fibromyalgia - Symptoms, diagnosis and treatment BMJ Best Practice • Fibromyalgia - The Brain Charity
Neurological Conditions	<ul style="list-style-type: none"> • The Brain Tumour Charity • Narcolepsy.Org • ACNR • MS Society UK Information, research and support Multiple Sclerosis Society UK • Home MS Trust • Latest News – Primary Care & Community Neurology Society (p-cns.org.uk)




Continuation of Long Term Conditions

<p>Musculoskeletal Conditions</p>	<ul style="list-style-type: none"> • Rheumatology • National Axial Spondyloarthritis Society • Musculoskeletal health • Musculoskeletal health: 5 year prevention strategic framework • Faculty of Occupational Medicine • Guide to embedding your first contact physiotherapy service
<p>Endocrine Disorders / Metabolic Disorders</p>	<ul style="list-style-type: none"> • Society for Endocrinology • Turner Syndrome Support Society • Thyroid Eye Disease • British Thyroid Foundation • Thyroid UK • The Pituitary Foundation • Addisons Disease • Parathyroid UK • The Royal Osteoporosis Society • Metabolic Support UK
<p>Frailty</p>	<ul style="list-style-type: none"> • Recognising frailty • Identifying frailty • CLINICAL FRAILTY SCALE
<p>Dementia / Alzheimers</p>	<ul style="list-style-type: none"> • Dementia UK • Age UK - Understanding Dementia • Delirium Champions • Alzheimers Society
<p>Allergy / Auto-immune / Genetic Conditions</p>	<ul style="list-style-type: none"> • Allergy UK • British Society for Rheumatology • Addisons Disease • Managing latent autoimmune disease in adults (independentnurse.co.uk)

Continuation of Long Term Conditions

Dermatology	<ul style="list-style-type: none"> • British Association of Dermatologists • Eczema • The British Skin Foundation • Acne vulgaris: management • The Primary Care Dermatology Society • Acne.org • Allergy UK • Urticaria • Hives • Sunburn • Causes of cancer and reducing your risk • What is Rosacea? • Rosecea • The Rosacea Forum • Herpes Viruses Association • Shingles • Fungal Skin Infection - Foot • The Psoriasis Association • National Psoriasis Foundation • Melanoma • Skin Health Information • British Association of Plastic Reconstructive and Aesthetic Surgeons - Procedure Guides • Warts and verrucae • Dermatology • Home - Hyperhidrosis UK
Obesity	<ul style="list-style-type: none"> • Obesity UK
Pain Management	<ul style="list-style-type: none"> • Pain Concern
Osteoporosis / Falls	

Continuation of Long Term Conditions

Genomics / Genetics	
Loneliness	<ul style="list-style-type: none"> • Loneliness (outlook.com)
Multi-Morbidity / Complex Needs	<ul style="list-style-type: none"> • Multimorbidity • Multimorbidity / multiple long-term conditions (MLTC)
Minor Illness / First Contact Assessment / OSCE	<ul style="list-style-type: none"> • Fact Sheets - Self Care Forum • OSCE Checklists  (mlsend.com) • OSCE Flashcards  (mlsend.com) • 600+ OSCE Stations ✨ (mlsend.com) • Anatomy Flashcards  (mlsend.com) • Health A to Z • #EM3: East Midlands Emergency Medicine Educational Media • Nursing In Practice Reference – Apps on Google Play • Nursing In Practice Reference on the App Store (apple.com) • Sore throat (cogora.com) • Blocked nose (cogora.com) • Headache (cogora.com) • Strep A infections may be on the decline early indications suggest (cogora.com) • Group A Streptococcus (GAS) interim clinical guidance (createsend1.com) • NICE Sore Throat (Acute) NG84 guidelines (createsend1.com) • Group A Strep (GAS) (icb.nhs.uk)
Other / Case Studies	
Winter / Summer Pressures	<ul style="list-style-type: none"> • Stay well this winter (icb.nhs.uk) • Winter Behaviours Social Media Post Copy Winter Behaviours Campaign Resource Centre (dhsc.gov.uk) • Catch It, Kill It, Bin It (outlook.com) • Stay well this winter leaflet (icb.nhs.uk) • NHS 111 online (icb.nhs.uk) • NHS App online resources :: Black Country ICB • Climate and health security: Looking ahead to 2023 - UK Health Security Agency (blog.gov.uk) (outlook.com)


End of Life Care	
End of Life Care / Bereavement / Organ Donation	<ul style="list-style-type: none"> • ReSPECT for healthcare professionals • Hospice UK • Palliative and End of Life Care Profiles - OHID (phe.org.uk) • Improved system of organ use to save lives - GOV.UK (www.gov.uk) • How can we improve care for those dying at home? (kingsfundmail.org.uk)
Flu / Covid-19 / Monkeypox	
Covid-19	<ul style="list-style-type: none"> • Black Country resources for COVID-19 (icb.nhs.uk) • NICE recommends 3 treatments for COVID-19 in final draft guidance News News NICE • Evusheld for protecting against current variants lacks evidence (nice.org.uk) • blog on the move to weekly reporting (outlook.com) • Variants of concern
Flu	<ul style="list-style-type: none"> • Black Country resources for flu (icb.nhs.uk)
Long covid	<ul style="list-style-type: none"> • Your Covid Recovery • Long Term Effects of Covid • Post Covid Syndrome - Long Covid • COVID-19 Yorkshire Rehabilitation Screening Tool • FOM Guidance • Long Covid Toolkit • Caring for People with Long Covid (qni.org.uk) • Long Covid
Monkey Pox	<ul style="list-style-type: none"> • ‘Answering questions on Monkeypox’ (outlook.com) • UK Strategy for Mpox Control 2022-23 (outlook.com)

News & Views

<p>Digital News / Remote Consultations / AI</p>	<ul style="list-style-type: none"> • Digital Health News Webinars • Digital Health News • NHS Digital • DigiHealthWell • Public Sector Events, Conferences and Training - Inside Government • Digital Transformation • New report suggests greater use of digital technology is a crucial step in reforming adult social care • Read the Special Report: Shared Care Records (campaign-archive.com) • [Webinar] Combat cyberthreats in your NHS organisation (mailchi.mp) • Your daily news updates from Digital Health (campaign-archive.com) • Digital Health News - 23 February 2023 (mailchi.mp) • Digital Health News - 16 February 2023 (mailchi.mp) • [Webinar] Secure your NHS organisation against cyberattacks (mailchi.mp) • Your daily news updates from Digital Health (campaign-archive.com) • BREAKING NEWS from The Carer • Digital Health Digest - 24 February 2023 (mailchi.mp) • AI and Digital Healthcare Technologies Capability framework published Health Education England (hee.nhs.uk)
<p>PSNC News / Pharmacy</p>	<ul style="list-style-type: none"> • National Pharmacy Association • Royal Pharmaceutical Society • Medicines Learning Portal • Specialist Pharmacy Service • PSNC Newsletter: 22nd February (mailchi.mp) • February 2023 Price Concessions 1st Update (mailchi.mp) • PSNC News Alert: Please complete the 2023 Pharmacy Pressures Survey (mailchi.mp) • Your local pharmacy (icb.nhs.uk)social media copy (blackcountryics.org.uk) • PSNC Newsletter: 17th February (mailchi.mp) • February 2023 Price Concessions 2nd Update (mailchi.mp) • PSNC Newsletter: 20th February (mailchi.mp) • PSNC Newsletter: 24th February (mailchi.mp)
<p>Pulse / GP Online / HSJ / NB Medical / 60 Second GP</p>	<ul style="list-style-type: none"> • GP Online • HSJ • Pulse Today • Practice-changing updates from GPnotebook: February 2023 (contains promotional information from GSK) (mailchi.mp)
<p>Primary Care Update / PCC / PPP</p>	<ul style="list-style-type: none"> • Public Policy Projects News • Primary Care Bulletin

Proactive Care	
Kings Fund	<ul style="list-style-type: none"> • The Kings Fund • Library services The King's Fund (kingsfund.org.uk) • v Health Management and Policy Alert: 17 February 2023 (kingsfundmail.org.uk) • Health and Wellbeing Bulletin (kingsfundmail.org.uk) • Health Management and Policy Alert: 21 February 2023 (kingsfundmail.org.uk) • New report Dying well at home (kingsfundmail.org.uk) • Your leadership update February 2023 (kingsfundmail.org.uk) • Health Management and Policy Alert: 24 February 2023 (kingsfundmail.org.uk) • How can we improve care for those dying at home? (kingsfundmail.org.uk)
Health Care Leaders Newsletters	
World Health Organisation	<ul style="list-style-type: none"> • WHO • OpenWHO
IHCT / CCG / STP / Healthier Futures	<ul style="list-style-type: none"> • Black Country & West Birmingham CCG • Dudley Integrated Health and Care • Home :: Black Country Healthcare NHS Foundation Trust • SharePoint • Message from Sally Roberts & Staff News (23 February 2023) (sharepoint.com) • Message from Mark Axcell & Staff News (16 February 23) (sharepoint.com) • Message from Mark Axcell & Staff News (09 February 2023) (sharepoint.com) • Message from Mark Axcell & Staff News (02 February 2023) (sharepoint.com) • Issue 30 - Black Country Primary Care Brief (sharepoint.com) • Issue 29 - Black Country Primary Care Brief (sharepoint.com) • Issue 28 - Black Country Primary Care Brief (sharepoint.com)
NHSI / NHSE	<ul style="list-style-type: none"> • NHS England • NHS England » NHS Digital merges with NHS England
University / Student Nurses	
Medisa / Univadis / Geeky Medics / GP Notebook / Medscape	<ul style="list-style-type: none"> • Medisa • Geeky Medics • Medscape Nurses • GP Notebook • Geeky Medics - YouTube • Updates in oncology from GPnotebook (mailchi.mp) • GPnotebook focus on ear, nose and throat (contains brand info from Glenmark: Combination therapy for allergic rhinitis in a fixed-dose nasal spray) (mailchi.mp)

Continuation of News & Views

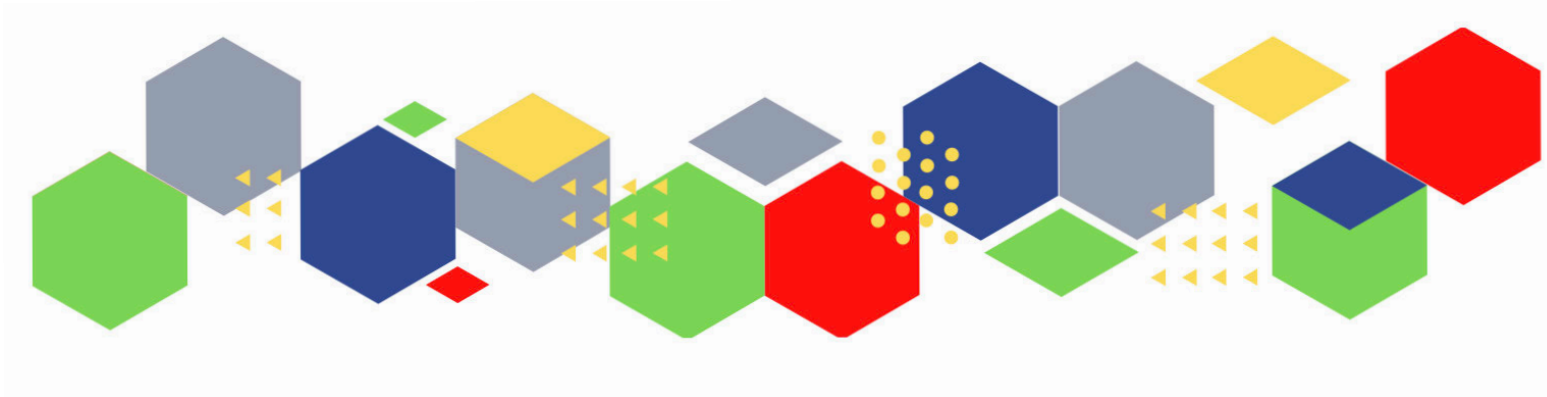
Nurse Guidelines	
The Health Foundation	<ul style="list-style-type: none"> • The Health Foundation • New low in public support for government's handling of NHS (healthfdn.org.uk)
The Health Care Leaders Update	<ul style="list-style-type: none"> • Health Care Leader News
Practice Index	
Innovation Agency	<ul style="list-style-type: none"> • Innovation Agency Exchange • It's the February 2023 newsletter! (mailchi.mp)
RCN	<ul style="list-style-type: none"> • RCN
Cavell Trust	<ul style="list-style-type: none"> • Your February newsletter  (mailchi.mp)
Nursing in Practice / Nursing Standard / Independent Nurse	<ul style="list-style-type: none"> • Nursing Times • JCN Newsletter • Nursing in Practice Bulletin • Independent Nurse
QNI	<ul style="list-style-type: none"> • QNI • Talk To Us @ – The Queen's Nursing Institute (qni.org.uk) • Draft-QNI-Field-Specific-SPQ-Standards.pdf • Community Children's Nurse Network Reaches New Milestone – The Queen's Nursing Institute (qni.org.uk) • Queen's Nurse Update February 2023 (mailchi.mp)
NMC	<ul style="list-style-type: none"> • NMC
CMO / CNO	<ul style="list-style-type: none"> • Chief medical officer Institute for Government • NHS England » Chief Nursing Officer for England
HRA	<ul style="list-style-type: none"> • HRA Latest
Nice	<ul style="list-style-type: none"> • NICE • New NICE quality standard identifies improvements in UTI diagnosis for women News News NICE • NICE News for Health and Social Care February 2023 (mailchi.mp)
RCGP / BMA / The Lancet	<ul style="list-style-type: none"> • The Lancet • British Medical Journal • Royal College of General Practitioners • British Journal of General Practice

Continuation of News & Views

Nuffield Health	<ul style="list-style-type: none"> • Home The Nuffield Trust • The state of community health services in England The Nuffield Trust
Midlands Academic Health Science Network	<ul style="list-style-type: none"> • WMAHSN Network
Healthwatch	<ul style="list-style-type: none"> • Healthwatch
CPD News	<ul style="list-style-type: none"> • CPD News
Inside Government	
NHS Resolution	
Other	<ul style="list-style-type: none"> • Patients Association • HRA Latest February 2023 (govdelivery.com)
Free Training / Webinars / Meetings / CPD	
Development / Information and Knowledge	<ul style="list-style-type: none"> • Red Whale Training • Issues & Answers • v Best Practice in delivery and management of immunisation services (mahealthcareevents.co.uk) • Your personal invitation to Best Practice London 2023 (bestpracticeshow.co.uk) • UK Care Week Wednesday 22nd March 2023 Thursday 23rd March 2023 NEC, Birmingham • PCN Study Day 2023 - Respiratory (mahealthcareevents.co.uk) • Innovative solutions for your practice (bestpracticeshow.co.uk) • Early bird tickets now available (kingsfundmail.org.uk) • UK Care Week 22-23/3/23 NEC • Nursing in Practice Virtual: Respiratory (outlook.com) 4 April 2023 • Nursing in Practice Virtual: Public Health & Immunisations (outlook.com) 13 June 2023 • Career Pathway, Core Cancer Capabilities in Practice (CiP) and Education Framework for the Nursing and Allied Health Professions Workforce (outlook.com) • visit the HEE ACCEND webpage (outlook.com)/ watching a short, online presentation (outlook.com) • NAFLD or MAFLD: should you care? (mahealthcareevents.co.uk) • CPD CERTIFIED CONFERENCE, 15TH MARCH 2023, LONDON • Best Practice in delivery and management of immunisation services (mahealthcareevents.co.uk) • Clinical Characteristics of Convexity Webinar - Register now (mahealthcareevents.co.uk) •

<p><i>Development / Workshops / Webinars / Information and Knowledge Continued</i></p>	<ul style="list-style-type: none"> • NHS ConfedExpo 2023 (outlook.com) • Thursday 9 March, 1pm to 1.45pm: How community nurses can harness social prescribing to improve outcomes • Thursday 30 March from 1pm to 2pm: A key to delivering Population Health Management • Best Practice London 8-9 March 2023 • NHS ConfedExpo 2023 (createsend1.com) • Learning from Deaths in Healthcare (outlook.com)22nd March • Clinical Characteristics of Convexity Webinar - Register now (mahealthcarevents.co.uk)
<p>Free to RCN</p>	<ul style="list-style-type: none"> • RCNi events RCNi • RCN Rheumatology Nursing Forum Webinar Royal College of Nursing
<p>MIMMs Learning</p>	
<p>Eventbrite</p>	<ul style="list-style-type: none"> • Part 2 - Hyperkalaemia in Heart Failure Registration, Mon 6 Mar 2023 at 20:00 Eventbrite • Part 3 - Case studies in hyperkalaemia Registration, Mon 27 Mar 2023 at 20:00 Eventbrite
<p>e-Learning for Health</p>	
<p>Skills for Health</p>	
<p>YouTube</p>	<ul style="list-style-type: none"> • NHS England • Black Country Healthcare - YouTube
<p>Podcasts</p>	<ul style="list-style-type: none"> • The Nursing Handover Podcast • Nursing Standard Podcasts • Nursing Matters • Welcome to the BJN Podcast • Cygnet Health Care Podcast • EBN podcast • This Is Nursing • Teach me, I'm a Nurse • Past Caring • RCGP eLearning podcast • The BMJ Podcast • Primary Care Network podcasts • The Professional Support Unit's Pandemic Podcast • The Next GenCast • Stream on Spotify here (outlook.com)

Future Proof Health Training	<ul style="list-style-type: none"> • Training
BCWB Training Hub	<ul style="list-style-type: none"> • Black Country Communications Toolkit - 17 Feb 2023 (mailchi.mp)
Evidence based care	
Apps	
Area Bulletins	
Research	<ul style="list-style-type: none"> • Science Daily • Multimorbidity / multiple long-term conditions (MLTC) • National Institute for Health and Care Research • NHS Knowledge and Library Hub - Knowledge and Library Services
Blogs/Vlogs	<ul style="list-style-type: none"> • Blog NB Medical • Climate and health security: Looking ahead to 2023 - UK Health Security Agency (blog.gov.uk) • The triple burden of flu, RSV and COVID-19 - UK Health Security Agency (blog.gov.uk) • Making progress on the global mission to develop pandemic-fighting tools within 100 days - UK Health Security Agency (blog.gov.uk) • Back to school - 5 things to do to help manage winter illness - UK Health Security Agency (blog.gov.uk) • Group A Strep - What you need to know - UK Health Security Agency (blog.gov.uk) • Click here to watch the vlog on YouTube (outlook.com)
Freebies	<ul style="list-style-type: none"> • Blue Light Card
Campagne Links	<ul style="list-style-type: none"> • 2023 D&I Calendar (hubspotusercontent-eu1.net)
Other	



Thank you for reading Future Proof Health's weekly news!

If you missed past issues, please click [here](#) to view them

More information can be found on our website, [here](#)

Don't forget to like us on [Facebook](#) & Follow us on [Twitter](#)

