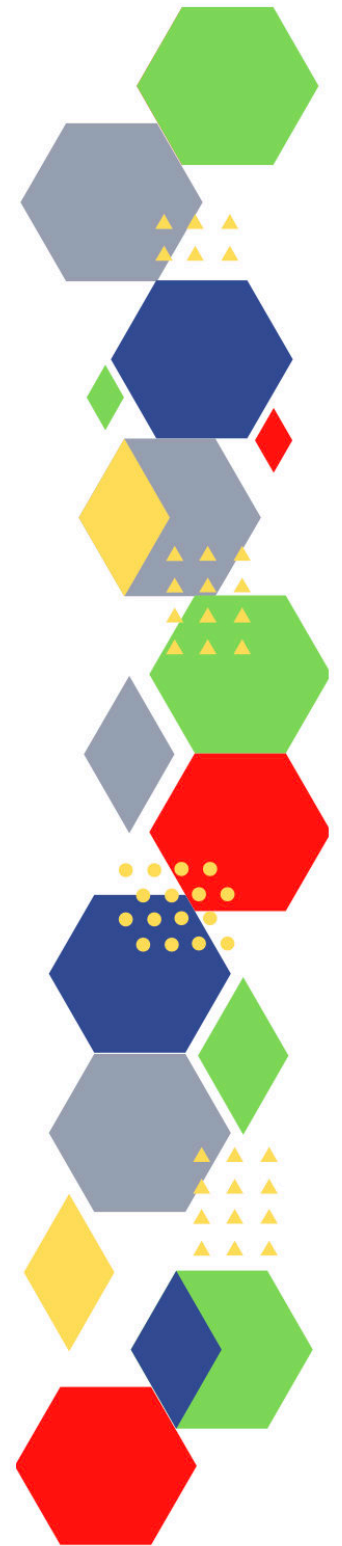




Future Proof Health Presents

Weekly News

8th December 2022



Communication	
Communication with Patients	<ul style="list-style-type: none"> • Resources and guidance are also available to help practices communicate with patients (cmail20.com)
Communication within Teams	
Consent / Advocacy / IMCA	<ul style="list-style-type: none"> • Gillick competency and Fraser guidelines • ReSPECT for healthcare professionals • Overview Advocacy services for adults with health and social care needs Guidance NICE • Fraser guidelines - General Practice notebook (bing.com) • Gillick Competence and the Fraser Guidelines – Mental Capacity Ltd (mental-capacity.co.uk) • Gillick Competence and Fraser Guidelines – Guide and Resources 2022 update - Safeguarding Hub • What You Need To Know About Gillick Competence And Fraser Guidelines - The Medic Portal • Children and young people ethics toolkit (bma.org.uk) • Mental Capacity Act - NHS (www.nhs.uk) • The Mental Capacity Act (2005) – Mental Capacity Ltd (mental-capacity.co.uk) • Mental Capacity Act Code of Practice - GOV.UK (www.gov.uk) • beh-capacity-assessment-tool-guidance.pdf (scie.org.uk) • Overview Decision-making and mental capacity Guidance NICE • Mental Capacity Act 2005 - The 5 principles (scie.org.uk) • Mental Capacity Act 2005 - legal information - Mind • Mental Health Act (easy read) - NHS (www.nhs.uk) • Independent Mental Capacity Advocate (IMCA) SCIE • Independent Mental Capacity Advocates (IMCA) - Mind • IMCA: Template report for the best interests assessment SCIE • Care Act factsheets - GOV.UK (www.gov.uk)
People and Personal Development	
Personal / People Development / Leadership	<ul style="list-style-type: none"> • Accountability and delegation in practice

NHS Employers / HR / NHS Pension	<ul style="list-style-type: none"> • NHS Employers • Pensions Online
Health, Safety & Security	
<ul style="list-style-type: none"> • NPSA • Control of Substances Hazardous to Health (COSHH) 	
Gov UK - NHS	
CQC	<ul style="list-style-type: none"> • GP mythbusters • CQC update for adult social care providers (govdelivery.com) • Update on how CQC is changing • News from the Care Quality Commission: November 2022 (govdelivery.com) • CQC update for adult social care providers (govdelivery.com)
MIMS	<ul style="list-style-type: none"> • Prescribing Update • Flu antivirals now prescribable on the NHS MIMS online (outlook.com) • Prescribing Update (mims.co.uk) • Database of prescription and generic drugs, clinical guidelines MIMS online
Health Protection Review	
Emergency Situations	<ul style="list-style-type: none"> • Resuscitation Council UK
Drug / Device Alerts (MHRA)	<ul style="list-style-type: none"> • Drug Safety Update (mhradrugsafety.org.uk) • Dupilumab (Dupixent▼): risk of ocular adverse reactions and need for prompt management - GOV.UK (www.gov.uk)
Vaccines / Medications / Prescribing	<ul style="list-style-type: none"> • Protocol for ordering, storing and handling vaccines • A Competency Framework for all Prescribers • Non-medical prescribing • The Human Medicines Regulations 2012 • RCN - Non-medical prescribers • Royal Pharmaceutical Society • Standards for prescribing • Clinical Negligence Scheme for General Practice • Home - electronic medicines compendium (emc) • Drug shortages - live tracker MIMS online • Flu antivirals now prescribable on the NHS MIMS online (outlook.com) • Polypharmacy - WMAHSN

Antibiotic steward-ship / Anti-microbial resistance	<ul style="list-style-type: none"> • ESPAUR report 2022 - the latest findings on Antimicrobial Resistance - UK Health Security Agency (blog.gov.uk) • Raising awareness about AMR: toolkits for healthcare professionals - UK Health Security Agency (blog.gov.uk) • Consultation launched to combat antimicrobial resistance
Infection Control / Infection Statics	<ul style="list-style-type: none"> • NHS England » National infection prevention and control • Infection Prevention & Control Champions Network and Me (qni.org.uk)
Safe Guarding	<ul style="list-style-type: none"> • Female genital mutilation (FGM) • PREVENT • Child protection system in the UK • Safeguarding Adults • Safeguarding children: detailed information • Domestic abuse victim services, England and Wales: 2022 (www.gov.uk) • Dudley Financial Abuse Alliance - September 2022 (govdelivery.com) • Wolverhampton Safeguarding Together - Training Update November 2022
Practice Policies: Practice Management / Accountability Duty of Candour	
Audit	
Information Governance / Record Keeping	<ul style="list-style-type: none"> • Guide to Data Protection • Supporting general practice – Medical record keeping • PRSB Newsletter: November 2022 (theprsb.org)

Quality & Service Improvement	
Quality, Service & Improvement	<ul style="list-style-type: none"> • The PRSB • General Practice Assessment Questionnaire (GPAQ) • Healthwatch • NHS Five Year Forward View • General Practice Forward View • NMC • Dr Jon Griffiths Blog • NHS Confed
Roles in General Practice Including AHP	<ul style="list-style-type: none"> • Standards for nursing associates • GP mythbuster 57: Health Care Assistants in General Practice • NHS England » Allied Health Professions
Revalidation	
Personal Practice & Development	
Practice Management	<ul style="list-style-type: none"> • Institute of General Practice Management • Practice Index
EMIS / System One	
Recruitment Employment / Retirement / Legacy Nursing	
NHS Self Care & Resilience	<ul style="list-style-type: none"> • Samaritans • Mental Health at work • Calm • Supporting our NHS people • The Hub :: Black Country Healthcare NHS Foundation Trust
Practice Transformation / Innovation Agency	<ul style="list-style-type: none"> • Health and Care Act 2022: combined impact assessments - GOV.UK (www.gov.uk) • collaborative practice webinar (createsend1.com) • Patients in England at risk as NHS and care 'gridlocked', (kingsfundmail.org.uk) • General practices to have direct access to tests to speed up cancer diagnosis (independentnurse.co.uk)

<p>Future of NHS / General Practice / NHS Recovery</p>	<ul style="list-style-type: none"> • NHS England • NHS England » Primary care • NHS mandate 2022 to 2023 • NHS Property Services Creating spaces for community and patient wellbeing • How does UK health spending compare across Europe over the past decade? - The Health Foundation • GP Appointments Data Dashboard - NHS Digital • Welcome to your Primary Care Access toolkit • Higher public support for overseas recruitment into NHS than into other sectors (cogora.com) • Armed forces could fill in for frontline roles during NHS strikes (cogora.com) • Government to use Vaccine Taskforce model to tackle health challenges - GOV.UK (www.gov.uk) • NHS staffing shortages The King's Fund (kingsfund.org.uk) • Record numbers of NHS doctors and nurses - GOV.UK (www.gov.uk) • GP practice data available for first time - GOV.UK (www.gov.uk)
<p>ICS / ICB / ICP / PCN Commissioning</p>	<ul style="list-style-type: none"> • Risk that 'optimism turns into disengagement' from local authorities in Integrated Care Systems, a new report analysing their early progress finds - County Councils Network • The first days of statutory integrated care systems The King's Fund (kingsfund.org.uk)
<p>QOF / PHOF / DES / LES / NHS Contract / CQRS / CQUIN</p>	<ul style="list-style-type: none"> • NHS England » Coding unpaid carers – SNOMED CT
<p>Leadership / Innovation</p>	<ul style="list-style-type: none"> • Leadership Academy
<p>Greener NHS</p>	<ul style="list-style-type: none"> • Greener Allied Health Professional hub (england.nhs.uk)
<p>Personalised Care</p>	
<p>Personalised Care / Self Care / Social Prescribing / Health Coaching</p>	<ul style="list-style-type: none"> • Self Care forum • Personalised Care Institute • Personalised care • Social Prescribing Academy
<p>Group consultation</p>	
<p>Working Differently</p>	
<p>Shared Decision Making</p>	<ul style="list-style-type: none"> • Personalised Care Institute

Equality & Diversity	
Equality & Diversity	<ul style="list-style-type: none"> • Public Health Profiles • Health equity and the UK Health Security Agency - UK Health Security Agency (blog.gov.uk)
Inclusion Health	<ul style="list-style-type: none"> • Health Creation Academic Network • Inequality on the inside
Poverty / Homelessness	<ul style="list-style-type: none"> • Crisis • This is Poverty • Warm Home Prescription Service
Population Health / Health Communities	
Thrive Into Work	<ul style="list-style-type: none"> • Thrive into Work • Thrive into Work Referral form
Health Inequalities	<ul style="list-style-type: none"> • NHS News
Trans / Non-binary Health / LGBTQ+	<ul style="list-style-type: none"> • LGBT Foundation • Surgery staff grab sheet (squarespace.com) • Trans inclusive organisations — TransActual • TransActual - Healthcare • CliniQ
Migrant / Refugee Health	<ul style="list-style-type: none"> • THE REFUGEE & MIGRANT CENTRE
Traveller / Gypsy / Romany Health	<ul style="list-style-type: none"> • Gypsy Roma and Traveller History and Culture The Traveller Movement • Friends, Families and Travellers (gypsy-traveller.org)
Veterans Health	<ul style="list-style-type: none"> • The first call for help takes courage
Voluntary / Charity	

Management of Emergency Situations	
111 / Emergency Care	<ul style="list-style-type: none"> • Health inequalities: what is happening in emergency medicine • Urgent & Emergency Care: acting on patient and public perspectives
Management of Emergency Situations	
First Contact	<ul style="list-style-type: none"> • Supporting general practice – Common pitfalls • Paediatrics for Primary Care (and anyone else) (gppaedstips.blogspot.com)
Red Flags	
Sepsis	<ul style="list-style-type: none"> • Sepsis: recognition, diagnosis and early management • Sepsis guidance implementation advice for adults • Sepsis in Children • Sepsis Trust • quick SEPSIS RELATED ORGAN FAILURE ASSESSMENT
Therapeutic Monitoring	
OSCE	<ul style="list-style-type: none"> • Geeky Medics • Abdominal Examination - Demonstration - YouTube • Cardiovascular Examination - Demonstration - YouTube • Respiratory Examination - Demonstration - YouTube • Physical Diagnosis Skills - University of Washington School of Medicine
Role Specific	
Cervical Cytology	<ul style="list-style-type: none"> • Guide to the interim assessment • British Association for Cytopathology • Lab Tests Online
Ear Care	<ul style="list-style-type: none"> • Ear Care Centre • RNID

Wound Management / Compression	<ul style="list-style-type: none"> • Microworld • Tissue Viability Society • The BLS • One week till Wounds Week 5! (mahealthcarevents.co.uk) • New material could promote wound healing for diabetes patients
Minor Surgery	
Obtaining Samples / Results	<ul style="list-style-type: none"> • Lab Tests Online
Health Promotion / Health Screening	
Health Promotion / Population Health	<ul style="list-style-type: none"> • Better Health • SHAPE Strategic Health Asset Planning and Evaluation (shapeatlas.net)
Health Screening	<ul style="list-style-type: none"> • PHE Screening
PHE / OHID / UKHSA	<ul style="list-style-type: none"> • Knowledge & Library Services • Campaign Resources • Public Health Profiles • Health Publications • Health Profile for England 2021 • English indices of deprivation 2019 • Government to use 'Vaccine Taskforce' model for public health research (cogora.com) • Achieving a step change in the health protection response to climate change - UK Health Security Agency (blog.gov.uk)
NHS Health Check	<ul style="list-style-type: none"> • NHS Health Check
UK GOV Flu / Covid / Bird Flu	<ul style="list-style-type: none"> • Coronavirus (COVID-19) Infection Survey, UK : 25 November 2022 • National flu and Covid-19 surveillance report: 24 November 2022 (week 47), UK Health Security Agency, 24 November 2022 (kingsfundmail.org.uk) • Changes to the COVID-19 dashboard and COVID-19 vaccination surveillance report - UK Health Security Agency (blog.gov.uk) • An update on avian flu - UK Health Security Agency (blog.gov.uk)
UK GOV - General Practice	
UK GOV - Secondary Care	

UK GOV Deaths / Suicide / Palliative Care / Mortality / End of Life	<ul style="list-style-type: none"> • Deaths registered weekly in England and Wales, provisional: week ending 18 November 2022 - Office for National Statistics (ons.gov.uk)
UK GOV - LTC	
Surveillance / Syndromic Surveillance	<ul style="list-style-type: none"> • Syndromic surveillance: systems and analyses - GOV.UK (www.gov.uk)
UK GOV Infectious Disease Monitoring / NOIDS	<ul style="list-style-type: none"> • Notifiable diseases: weekly reports for 2022 - GOV.UK (outlook.com) • Notifications of infectious diseases (NOIDs) - GOV.UK (www.gov.uk) • The UK Public Health Rapid Support Team - A renewed commitment to tackling infectious diseases - UK Health Security Agency (blog.gov.uk)
UK GOV - Mental Health	
Addiction/Smoking	<ul style="list-style-type: none"> • Drink Coach • Stop smoking interventions and services • Addiction and mental health • Smoking research roundup (independentnurse.co.uk)
Immunisation / Travel Health	
<ul style="list-style-type: none"> • Joint Committee on Vaccination and Immunisation • Immunisation against infectious disease • West Midlands Immunisation Service • Vaccination of individuals with uncertain or incomplete immunisation status • Immunisation Queries: Immunisation information for Health Care Services within the West Midlands area • Immunisation • Eligible people urged to get vaccinated as flu season officially under way - GOV.UK (www.gov.uk) <p>Universal flu vaccine could prevent another pandemic</p>	

Flu	<ul style="list-style-type: none"> • Flu and flu vaccinations • The national influenza immunisation programme 2021 to 2022 • Flu vaccines for the 2021 to 2022 season poster • Appendix C: Flu vaccinator competency assessment tool • Healthcare assistants and flu vaccinations • New vaccine marketing campaign urges millions to boost their immunity this winter • The flu vaccine reimbursement guidance sets out the planned cohorts and vaccines that will be reimbursed for 2022/23 (createsend1.com) • Universal flu vaccine could prevent another pandemic (independentnurse.co.uk)
Covid Vaccine	<ul style="list-style-type: none"> • Greenbook COVID-19 chapter 14a • COVID-19 Vaccine Moderna e-learning now available • GP COVID-19 vaccine dashboard • Updates made to the COVID-19 vaccination learning programme • New vaccine marketing campaign urges millions to boost their immunity this winter
Children	
Adults	<ul style="list-style-type: none"> • Immunisation patient group direction (PGD) templates • Shingles immunisation programme: introduction of Shingrix® letter
Vaccine Update	<ul style="list-style-type: none"> • Vaccine update: issue 331, August 2022 - GOV.UK (www.gov.uk) • Vaccine update: issue 329, May 2022 - GOV.UK (www.gov.uk) • Vaccine update: issue 328, May 2022, Shingrix® special edition - GOV.UK (www.gov.uk) • Vaccine update: issue 327, May 2022, SCID, TB and BCG special edition (www.gov.uk) • Vaccine update: issue 326, April 2022, HPV special edition - GOV.UK (www.gov.uk) • Vaccine update: issue 325, April 2022, flu special edition - GOV.UK (www.gov.uk)
PGD	<ul style="list-style-type: none"> • Hib/MenC: patient group direction (PGD) template - GOV.UK (www.gov.uk)
Travel Health	<ul style="list-style-type: none"> • Travel Health Pro • Fit for Travel • Travel Health • Jane Chiodini • Corona.Help

Mental Health / Learning Disability / Disability

<p>Mental Health</p>	<ul style="list-style-type: none"> • Mental Health • Mental Health UK • Mind • Place2b • Rethink Mental Illness • Young Minds • Every Mind Matters • Calm • Headspace • Better Health - Every Mind Matters - Resources • ZSA Training • NHS > Mental Health • Report: Mental Health Act community treatment orders (CTO) – focused visits (cqg.org.uk) • NICE conditionally recommends digital cognitive behaviour therapies for use in the NHS to help children and young people with symptoms of mild to moderate anxiety • Government 'sidelining' young people as mental health disorders rise to one in four Nursing in Practice • HEE elfh Hub (e-Ifh.org.uk) <p>Understanding Eating Disorders Webinar resource for dietitians, oral health teams and community pharmacy teams</p>
<p>Learning Disability</p>	<ul style="list-style-type: none"> • Learning Disabilities • Learning Disability England • Mencap • Bild • Autism
<p>Disability (Inc. hearing and visual)</p>	<ul style="list-style-type: none"> • Disability Rights UK • Disability Matters • RNID - National hearing loss charity • Spokzpeople • Sight Loss Data Tool RNIB

From Cradle to...

<p>Infant Health</p>	<ul style="list-style-type: none"> • Tommys • First Steps Nutrition Trust • Bliss • ICON Toolkit • Sandwell - BC - ICB Primary Care - 7 minute briefing
<p>Child Health</p>	<ul style="list-style-type: none"> • Unicef • Health Professional Academy • Premature Babies • Child and Maternal Health • Women and Child First • Child Health Information Services • Place2b • Childhood eczema • Childhood asthma • Paediatrics for Primary Care (and anyone else) (gppaedstips.blogspot.com) • Paediatric focus from GPn (contains promotional information from Nestle: Support for managing parental anxiety and infant reflux) (mailchi.mp) • Mental Health of Children and Young People in England 2022 - wave 3 follow up to the 2017 survey - NHS Digital • NICE conditionally recommends digital cognitive behaviour therapies for use in the NHS to help children and young people with symptoms of mild to moderate anxiety • Government 'sidelining' young people as mental health disorders rise to one in four • CPD learning module: nutrition and risk of obesity in school-age children • 5 ways to protect your under 5s this winter - UK Health Security Agency (blog.gov.uk)
<p>Adolescent Health</p>	<ul style="list-style-type: none"> • Adolescent Health Programme • Society for Adolescent Health and Medicine • Young Minds • CPD module: Depression in young men (cogora.com) • Support for vulnerable adolescents (nao.org.uk)

Mens Health	<ul style="list-style-type: none"> • Mens Health Forum • Mens Health Month • Mens health.org • Mens Health UK • Men and mental health • Men's Mental Health Awareness • Prostate Cancer UK • Orchid Fighting Male Cancer • Prostate Cancer UK Facebook Page • Movember • Mens health - Nursing in Practice • NHS England » NHS fast tracks life-extending prostate cancer drug to patients • New prostate cancer education (prostatecanceruk.org)
The Older Population	<ul style="list-style-type: none"> • BGS • Ageing Better • Delirium Champions - YouTube
Young Carers	
Complex Needs	

Women's Health

- [Womens Health Concern](#)
- [Well Being of Women](#)
- [Coppa Feel](#)
- [Menopause Matters](#)
- [The Menopause Charity](#)
- [Royal College of Obstetricians and Gynaecologists - Guidelines](#)
- [Pelvic Partnership](#)
- [CRUK - Womens Cancer](#)
- [Breast Cancer Now](#)
- [Foundation for Women's Cancer](#)
- [Eve Appeal](#)
- [Ovarian.Org](#)
- [Jo's Trust](#)
- [Well Spring](#)
- [Know your Lemons](#)
- [British Menopause Society - www.thebms.org.uk](#)
- NHS - www.nhs.uk/conditions/menopause
- Henpicked - henpicked.net
- The Menopause Exchange - www.menopause-exchange.co.uk
- Women's Health Concerns - www.womens-health-concern.org
- Menopause Matters - www.menopausematters.co.uk
- The Daisy Network - www.daisynetwork.org
- Dr Louise Newson's Menopause Doctor - www.menopausedoctor.co.uk
- Manage My Menopause - www.managemymenopause.co.uk/menopause-advice
- Menopause Support - menopausesupport.co.uk
- [Vaginal atrophy: what is it and how can it be treated? \(practicenursing.com\)](#)
- [Target ovarian cancer](#)
- [CPD module: Diagnosis and management of endometriosis \(cogora.com\)](#)
- [PCN Women's Health Study Day \(mahealthcarevents.co.uk\)](#)
- [CPD module: Diagnosis and management of endometriosis](#)

Carers / Social Care / Care Homes	<ul style="list-style-type: none"> • The Care Provider Alliance • Skills for Care • The Care Workers' Charity • Supporting Adult Carers • The Care UK • v NHS England » Coding unpaid carers – SNOMED CT • BREAKING NEWS from The Carer (ourmailsender4.com) • Risk that 'optimism turns into disengagement' from local authorities in Integrated Care Systems, a new report analysing their early progress finds - County Councils Network • Warm Home Prescription Service • Read Issue 125 of The Carer Digital Now! (ourmailsender4.com) • BREAKING NEWS from The Carer (ourmailsender4.com) • Care Act factsheets - GOV.UK (www.gov.uk)
Family Planning & Sexual Health	
Family Planning	<ul style="list-style-type: none"> • Faculty of Sexual and Reproductive Healthcare Education and Training
Reproductive	<ul style="list-style-type: none"> • Tommys
Sexual Health / Sexual Abuse	<ul style="list-style-type: none"> • Sexual and Reproductive Health Profiles • FSRH Education & Training • Learning from safety incidents: Issue 11 - Promoting sexual safety (cqc.org.uk) • Learning from safety incidents (cqc.org.uk) • NHS England » NHS offers second monkeypox jab to everyone eligible • Getting tested for an STI: Your guide to how it works - UK Health Security Agency (blog.gov.uk) • STIs: Get tested, get treated
Maternity / Neonate health	<ul style="list-style-type: none"> • CPD module: Diabetes in pregnancy – the primary care role

Care of Patients with Long Term Conditions	
LTC	<ul style="list-style-type: none"> • Physical Activity for the Prevention and Management of Long-Term Conditions • Health A to Z
Diabetes & Pre-Diabetes	<ul style="list-style-type: none"> • Mumoactive • The mySugr App • PCDS Entry level module series - Foot Check • Type 2 diabetes in adults: management • New material could promote wound healing for diabetes patients • CPD module: Diabetes in pregnancy – the primary care role
Respiratory	<ul style="list-style-type: none"> • Spirometry: step by step • ARTP • British Lung Foundation • The Primary Care Respiratory Society • Respiratory – Respimat® patient resources Boehringer Ingelheim (boehringer-ingelheim.com) • Respiratory News & Advice (nursinginpractice.com) • Dudley pulmonary rehab - Template PI (dgft.nhs.uk) • Chronic Breathlessness Training
COPD	<ul style="list-style-type: none"> • Right Breathe • GOLD COPD 2022 strategy Independent professional body guideline Guidelines
Asthma	<ul style="list-style-type: none"> • Asthma UK • Asthma: diagnosis, monitoring and chronic asthma management • Global Initiative for Asthma • British guideline on the diagnosis and pharmacological management of asthma in children
Hypertension	<ul style="list-style-type: none"> • British Heart Foundation • Blood Pressure UK • Hypertension in adults: diagnosis and management • Hypertension in adults: diagnosis and treatment • Hypertension: symptoms to look out for and treatment options (rcni.com) • Nurse-led project launched to tackle high blood pressure in black communities (cogora.com)

Continuation of Long Term Conditions

CVD/AF	<ul style="list-style-type: none"> • QRISK®3-2018 risk calculator • Heart Rhythm Alliance • CVD risk assessment and management • NHS lipid management pathway NHS guideline Guidelines
Heart Failure	<ul style="list-style-type: none"> • British Heart Foundation • British Society Guidelines
Chronic Kidney Disease	<ul style="list-style-type: none"> • Kidney.Org • Kidney Quality Improvement Partnership • Practice-changing updates from GPnotebook: November 2022 (mailchi.mp)
Liver Disease	<ul style="list-style-type: none"> • British Liver Trust • Liver Research • BRITISH ASSOCIATION FOR THE STUDY OF THE LIVER • LIVERnORTH • LIVER DISEASE AND CIRRHOSIS • NHS England » NHS set to eliminate Hepatitis C ahead of rest of the world
Cancer / Oncology	<ul style="list-style-type: none"> • Surviving Thyroid Cancer • Help Us Help You - Lung Cancer Symptoms • Breast Cancer Now • Macmillian • Bowel Cancer UK • Brain Trust • CRUK • Action Cancer • Foundation for Women's Cancer • NHS England » Cancer • NHS England » NHS fast tracks life-extending prostate cancer drug to patients • New prostate cancer education (prostatecanceruk.org)

Continuation of Long Term Conditions

Blood Disorders	<ul style="list-style-type: none"> • Blood Cancer UK • UK Thalassaemia Society • The ITP Support Association • UK-ITP Paediatric ITP Registry • The Haemophilia Society • UK MDS Forum • Pernicious Anaemia Society • Haemochromatosis UK
G.I	<ul style="list-style-type: none"> • GIST Cancer UK • Pernicious Anaemia Society • Antibiotics shown to reduce risk of aspirin-induced GI bleeding • IBD GP Matters Janssen Medical Cloud • Events Janssen Medical Cloud • Resources Janssen Medical Cloud
ENT	
G.U	
ME / CFS / Fibromyalgia	<ul style="list-style-type: none"> • ME Association • ME Research • Action for M.E • Fibromyalgia Action UK • Fibromyalgia UK • Home - Fibromyalgia Awareness UK (fibroawarenessuk.org) • Fibromyalgia - Symptoms, diagnosis and treatment BMJ Best Practice • Fibromyalgia - The Brain Charity
Neurological Conditions	<ul style="list-style-type: none"> • The Brain Tumour Charity • Narcolepsy.Org • ACNR • MS Society UK Information, research and support Multiple Sclerosis Society UK • Home MS Trust

Continuation of Long Term Conditions

<p>Musculoskeletal Conditions</p>	<ul style="list-style-type: none"> • Rheumatology • National Axial Spondyloarthritis Society • Musculoskeletal health • Musculoskeletal health: 5 year prevention strategic framework • Faculty of Occupational Medicine • Guide to embedding your first contact physiotherapy service • Musculoskeletal health: trends, risk factors and disparities in England, November 2022 - GOV.UK (www.gov.uk) • Nice recommends apos shoes for people with severe knee osteoarthritis • Sarcopenia part-2 prevention treatment and management • New gout guideline summary • NICE advocates adapted shoes OA patients
<p>Endocrine Disorders / Metabolic Disorders</p>	<ul style="list-style-type: none"> • Society for Endocrinology • Turner Syndrome Support Society • Thyroid Eye Disease • British Thyroid Foundation • Thyroid UK • The Pituitary Foundation • Addisons Disease • Parathyroid UK • The Royal Osteoporosis Society • Metabolic Support UK
<p>Frailty</p>	<ul style="list-style-type: none"> • Recognising frailty • Identifying frailty • CLINICAL FRAILTY SCALE

Continuation of Long Term Conditions

Dementia / Alzheimers	<ul style="list-style-type: none"> • Dementia UK • Age UK - Understanding Dementia • Delirium Champions • Alzheimers Society • Alzheimers research uk welcomesn governments recommitment to Dame Barbara Windsor dementia mission • Dementia drug first to slow destruction of brain • Promising results early alzheimers drug • CPD: Managing dementia as a palliative condition (cogora.com)
Dermatology	<ul style="list-style-type: none"> • British Association of Dermatologists • Eczema • The British Skin Foundation • Acne vulgaris: management • The Primary Care Dermatology Society • Acne.org • Allergy UK • Urticaria • Hives • Sunburn • Causes of cancer and reducing your risk • What is Rosacea? • Rosecea • The Rosacea Forum • Herpes Viruses Association • Shingles • Fungal Skin Infection - Foot • The Psoriasis Association • National Psoriasis Foundation • Melanoma • Skin Health Information • British Association of Plastic Reconstructive and Aesthetic Surgeons - Procedure Guides • Warts and verrucae

<i>Continuation of Long Term Conditions</i>	
Allergy / Auto-immune / Genetic Conditions	<ul style="list-style-type: none"> • Allergy UK • British Society for Rheumatology • Addisons Disease
Obesity	<ul style="list-style-type: none"> • Obesity UK • New obesity treatments and technology to save the NHS billions - GOV.UK (www.gov.uk) • CPD learning module: nutrition and risk of obesity in school-age children
Pain Management	<ul style="list-style-type: none"> • Pain Concern
Osteoporosis / Falls	<ul style="list-style-type: none"> • General practice tool could help prevent serious falls, study shows (cogora.com)
Genomics	
Multi-Morbidity	<ul style="list-style-type: none"> • Multimorbidity • Multimorbidity / multiple long-term conditions (MLTC)
Minor Illness / First Contact Assessment / OSCE	<ul style="list-style-type: none"> • Fact Sheets - Self Care Forum • OSCE Checklists 📄 (mlsend.com) • OSCE Flashcards 🩺 (mlsend.com) • 600+ OSCE Stations ✨ (mlsend.com) • Anatomy Flashcards 🫁 (mlsend.com) • Health A to Z
Other / Case Studies	
Winter / Summer Pressures	<ul style="list-style-type: none"> • NHS England » Hundreds of beds taken up by flu patients every day ahead of winter • Warm home prescription service • Increasing transparency in our winter statistics - UK Health Security Agency (blog.gov.uk) • NHS England » Thousands of beds taken up every day as NHS contends with 'perfect storm' of winter pressures

End of Life Care	
End of Life Care / Bereavement	<ul style="list-style-type: none"> • ReSPECT for healthcare professionals • Hospice UK • v End-of-life care inconsistent amid 'stretched' community services, research finds Nursing in Practice • DNAR forms and CPR decisions - Compassion in Dying • Do Not Resuscitate: Forms and Information – End of Life care, and what to expect (dnar.co.uk) • DNAR Decision-Making British Institute of Human Rights (bihr.org.uk) • Guidance: DNACPR and CPR decisions Resuscitation Council UK • Slide 1 (dnar.co.uk) • DNR: A guide for understanding your rights and challenging decisions – Learning Disability England • DNAR forms and CPR decisions - Compassion in Dying • My Living Will - Welcome to My Living Will • Power of Attorney: Plan ahead - MoneySavingExpert • Making a will: Write your will - GOV.UK (www.gov.uk) • Advance decision (living will) - NHS (www.nhs.uk) • Dying People Left in Pain at Evenings and Weekends Marie Curie Warns
Flu / Covid-19 / Monkeypox	
Covid-19	<ul style="list-style-type: none"> • National flu and COVID-19 surveillance reports: 2022 to 2023 season
Flu	<ul style="list-style-type: none"> • Flu antivirals now prescribable on the NHS MIMS online (outlook.com)
Long covid	<ul style="list-style-type: none"> • Your Covid Recovery • Long Term Effects of Covid • Post Covid Syndrome - Long Covid • COVID-19 Yorkshire Rehabilitation Screening Tool • FOM Guidance • Long Covid Toolkit • Caring for People with Long Covid (qni.org.uk)
MONKEY POX	<ul style="list-style-type: none"> • NHS England » NHS offers second monkeypox jab to everyone eligible • Monkeypox virus - an overview for primary care nurses

News & Views

<p>Digital News / Remote Consultations</p>	<ul style="list-style-type: none"> • Digital Health News Webinars • Digital Health News • NHS Digital • DigiHealthWell • Public Sector Events, Conferences and Training - Inside Government • Digital Transformation • Your daily news updates from Digital Health (campaign-archive.com) • Digital Health Networks Newsletter: 28 November 2022 (mailchi.mp) • Your daily news updates from Digital Health (campaign-archive.com) • Digital Health Digest (kingsfundmail.org.uk) • Your daily news updates from Digital Health (campaign-archive.com)
<p>Pulse / GP Online / HSJ / NB Medical</p>	<ul style="list-style-type: none"> • GP Online • HSJ • Pulse Today • Paediatric focus from GPn (contains promotional information from Nestle: Support for managing parental anxiety and infant reflux) (mailchi.mp)
<p>PSNC News / Pharmacy</p>	<ul style="list-style-type: none"> • National Pharmacy Association • Royal Pharmaceutical Society • Medicines Learning Portal • Specialist Pharmacy Service • PSNC Newsletter: 28th November (mailchi.mp) • November 2022 Price Concessions 4th Update (mailchi.mp) • November 2022 Price Concessions 5th Update (mailchi.mp) • PSNC Newsletter: 30th November (mailchi.mp)

Continuation of News & Views

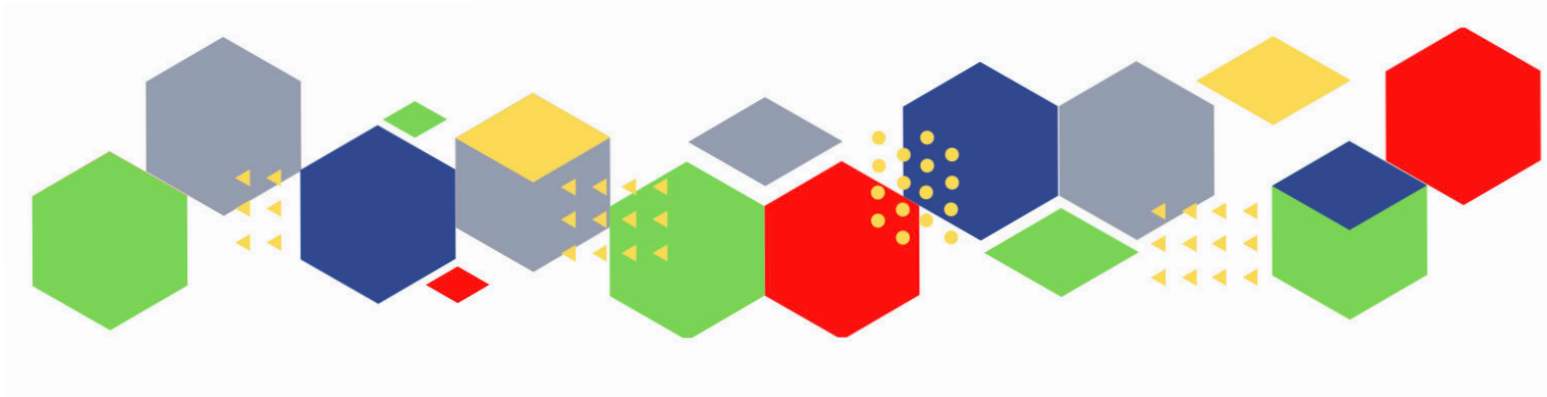
Primary Care Update / PCC / PPP	<ul style="list-style-type: none"> • Public Policy Projects News • Primary Care Bulletin
Proactive Care	
Health Care Leaders Newsletters	
Kings Fund	<ul style="list-style-type: none"> • The Kings Fund • Health and care explained returns (kingsfundmail.org.uk) • Your events update December 2022 (kingsfundmail.org.uk)
World Health Organisation	<ul style="list-style-type: none"> • WHO • OpenWHO
IHCT / CCG / STP / Healthier Futures	<ul style="list-style-type: none"> • Black Country & West Birmingham CCG • Dudley Integrated Health and Care • Home :: Black Country Healthcare NHS Foundation Trust • Issue 22 - Black Country Primary Care Brief (sharepoint.com) • Issue 21 - Black Country Primary Care Brief (sharepoint.com) • Staff News
NHSI / NHSE	
University / Student Nurses	
Medisa / Univadis / Geeky Medics / GP Notebook / Medscape	<ul style="list-style-type: none"> • Medisa • Geeky Medics • Medscape Nurses • GP Notebook
Nurse Guidelines	

Continuation of News & Views

The Health Care Leaders Update	<ul style="list-style-type: none"> • Health Care Leader News
The Health Foundation	<ul style="list-style-type: none"> • The Health Foundation • How does UK health spending compare across Europe over the past decade? - The Health Foundation
Practice Index	
Innovation Agency	<ul style="list-style-type: none"> • Innovation Agency Exchange
RCN	<ul style="list-style-type: none"> • RCN • RCN Magazines Royal College of Nursing
Nursing in Practice / Nursing Standard / Independent Nurse	<ul style="list-style-type: none"> • Nursing Times • Practice Nursing - Explore our brand new website • Nursing Bulletin • Nursing Clinical Bulletin • JCN Newsletter
QNI	<ul style="list-style-type: none"> • QNI • Talk To Us © – The Queen's Nursing Institute (qni.org.uk) • Queen's Nurse Update November 2022 (mailchi.mp)
NMC	<ul style="list-style-type: none"> • NMC
CMO / CNO	

Nice	<ul style="list-style-type: none"> • NICE • NICE News for Health and Social Care November 2022 (mailchi.mp)
RCGP / BMA / The Lancet	<ul style="list-style-type: none"> • The Lancet • British Medical Journal • Royal College of General Practitioners
Midlands Academic Health Science Network	<ul style="list-style-type: none"> • WMAHSN Network • Polypharmacy - WMAHSN
Healthwatch	<ul style="list-style-type: none"> • Healthwatch
Other	<ul style="list-style-type: none"> • Patients Association
Free Training / Webinars / Meetings / CPD	
Development / Information and Knowledge	<ul style="list-style-type: none"> • Red Whale Training • Issues & Answers • Issues & Answers - Long Covid Broadcasts • PCN Women's Health Study Day (mahealthcareevents.co.uk) • Chronic Breathlessness Training
Free to RCN	<ul style="list-style-type: none"> • RCNi events RCNi • RCN Shropshire AGM and learning event Event Royal College of Nursing
MIMMs Learning	
Eventbrite	
e-Learning for Health	
YouTube	<ul style="list-style-type: none"> • NHS England • Black Country Healthcare - YouTube
Future Proof Health Training	<ul style="list-style-type: none"> • Training
BCWB Training Hub	
Evidence based care	

Podcasts	<ul style="list-style-type: none"> • The Nursing Handover Podcast • Nursing Standard Podcasts • Nursing Matters • Welcome to the BJN Podcast • Cygnet Health Care Podcast • EBN podcast • This Is Nursing • Teach me, I'm a Nurse • Past Caring • RCGP eLearning podcast • The BMJ Podcast • Primary Care Network podcasts • The Professional Support Unit's Pandemic Podcast • The Next GenCast
Area Bulletins	
Research	<ul style="list-style-type: none"> • Science Daily • Multimorbidity / multiple long-term conditions (MLTC) • National Institute for Health and Care Research • Research England invests in UK-Ukraine university twinning scheme – UKRI
Blogs/Vlogs	<ul style="list-style-type: none"> • Blog NB Medical • Care Quality Commission Blog
Freebies	<ul style="list-style-type: none"> • Blue Light Card
Campagne Links	
Other	



Thank you for reading Future Proof Health's weekly news!

If you missed past issues, please click [here](#) to view them

More information can be found on our website, [here](#)

Don't forget to like us on [Facebook](#) & Follow us on [Twitter](#)

