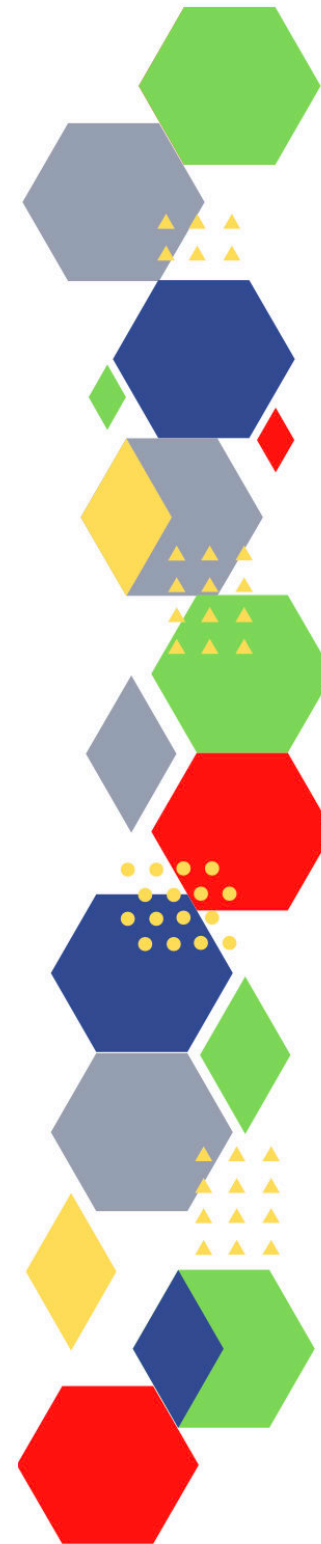


Future Proof Health Presents

Weekly News

7th October 2021



Communication	
Communication with Patients	
Communication within Teams	
Consent	<ul style="list-style-type: none"> • Gillick competency and Fraser guidelines • CONSENT POLICY • ReSPECT for healthcare professionals
People and Personal Development	
Personal / HR & People Development / Leadership	<ul style="list-style-type: none"> • Job Vacancies • Accountability and delegation in practice
Health, Safety & Security	
	<ul style="list-style-type: none"> • NPSA • HSE Weekly Bulletin • DSEAR in detail
CQC	<ul style="list-style-type: none"> • GP mythbusters • Examples of outstanding practice for GPs • CQC Update • News from the Care Quality Commission: September 2021 • Training for Long Covid Enhanced Service for Dudley Practices - Training 7/10 @ 6pm
Vaccines / Medications / Prescribing	<ul style="list-style-type: none"> • Protocol for ordering, storing and handling vaccines • A Competency Framework for all Prescribers • Non-medical prescribing • The Human Medicines Regulations 2012 • RCN - Non-medical prescribers • Royal Pharmaceutical Society • Standards for prescribing • Clinical Negligence Scheme for General Practice • Specialist Pharmacy Service - Guidance • National overprescribing review report • New in: Safe prescribing of medicines

Drug / Device Alerts (MHRA)	<ul style="list-style-type: none"> • Launching BIA-MHRA Joint Conference 2021: Register today - 8th December 2021
Antibiotic steward-ship / Anti-microbial resistance	
Emergency Situations	<ul style="list-style-type: none"> • The updated National Early Warning Score and its use with suspected Sepsis • Resuscitation Council UK
Infection Control / Infection Statics	
Safe Guarding	<ul style="list-style-type: none"> • Female genital mutilation (FGM) • PREVENT • Child protection system in the UK • Safeguarding Adults • Safeguarding children: detailed information
Practice Policies	<ul style="list-style-type: none"> • Annual report on whistleblowing from healthcare regulators published
Audit	
Information Governance	<ul style="list-style-type: none"> • Guide to Data Protection • Supporting general practice – Medical record keeping
Quality & Service Improvement	
Quality, Service & Improvement	<ul style="list-style-type: none"> • The PRSB • General Practice Assessment Questionnaire (GPAQ) • Healthwatch • NHS Five Year Forward View • General Practice Forward View • NMC • Dr Jon Griffiths • NHS Confederation • Capital funding needed to bring the NHS estate into the 21st century • Excess treatment costs Guidance on the national management model for England • Annual hospital outpatient report published for 2020/21 • ACCESS CARDS COMMS TOOLKIT

New Roles in General Practice	<ul style="list-style-type: none"> • Standards for nursing associates • GP mythbuster 57: Health Care Assistants in General Practice • National Minimum Standards and Core Curriculum for Immunisation Training of Healthcare Support Workers • Pharmacy Academy
Revalidation	
Personal Practice & Development	
NHS Self Care & Resilience	<ul style="list-style-type: none"> • Samaritans • Mental Health at work • Calm • Supporting our NHS people • Staff mental health and wellbeing hubs
ICS / PCN	<ul style="list-style-type: none"> • Integrated care systems and place-based partnerships: six months on (virtual conference)
Leadership	<ul style="list-style-type: none"> • Leadership Academy
Personalised Care	
Personalised Care / Self Care / Social Prescribing / Health Coaching	<ul style="list-style-type: none"> • Self care forum • Personalised Care Institute • Personalised care • Social Prescribing Academy
Group consultation	
Working Differently	<ul style="list-style-type: none"> • Working collaboratively in an ICS: freeing up opportunities in community pharmacy • NHS General Practice Multidisciplinary Team Resources
Health & Well-Being	
Health & Well-Being	
Assessment	
Obtaining samples	
QOF/PHOF/DES/LES	<ul style="list-style-type: none"> • Enhanced service specification: Weight management 2021/22

Equality & Diversity	
Equality & Diversity	<ul style="list-style-type: none"> • Public Health Profiles
Inclusion Health	<ul style="list-style-type: none"> • Health Creation Academic Network
Poverty / Homelessness	<ul style="list-style-type: none"> • Crisis • Homes that kill: 2 million homes in England pose a serious threat to health or safety
Migrant Health	<ul style="list-style-type: none"> • Afghan Relocation and Assistance Policy - GP Welcome Letter
Thrive Into Work	<ul style="list-style-type: none"> • Thrive into Work • Thrive into Work Referral form
Health Inequalities	<ul style="list-style-type: none"> • NHS population screening: identifying and reducing inequalities • People living in the poorest areas waiting longer for hospital treatment
Role Specific	
Cervical Cytology	<ul style="list-style-type: none"> • Guide to the interim assessment • Cervical screening for trans men and/or non-binary people
Ear Care	
Wound Management	<ul style="list-style-type: none"> • WOUNDEXPO2021 • Microworld • Wound Care Today 2021
Minor Surgery	<ul style="list-style-type: none"> • Supporting general practice – Consent

Management of Emergency Situations	
Management of Emergency Situations	<ul style="list-style-type: none"> • The updated National Early Warning Score and its use with suspected Sepsis
Red Flags	<ul style="list-style-type: none"> • Supporting general practice – Common pitfalls
Sepsis	<ul style="list-style-type: none"> • Sepsis: recognition, diagnosis and early management • Sepsis guidance implementation advice for adults • Sepsis in Children • Sepsis Trust • RCGP: Sepsis • World Sepsis Day 2021- HEE launches new Sepsis Awareness Resource video
Therapeutic Monitoring	
111	<ul style="list-style-type: none"> • NHS 111 Online - August 2021 - Resources • Video - Do you need urgent care? Call 111 first. You can also use the NHSapp or go to 111.nhs.uk for further advice. • UEC pressures social media wording
Health Promotion / Health Screening	
Health Promotion / Population Health	<ul style="list-style-type: none"> • Better Health • EXi App
Health Screening	<ul style="list-style-type: none"> • NHS population screening: identifying and reducing inequalities
PHE/OHID	<ul style="list-style-type: none"> • Knowledge & Library Services • Campaign Resources • Public Health Profiles • Health Publications • Health Profile for England 2021 • Transforming the public health system: reforming the public health system for the challenges of our times • Office for Health Improvement & Disparities
NHS Health Check	<ul style="list-style-type: none"> • NHS Health Check
NOIDS / PHE Surveillance / Syndromic Surveillance	<ul style="list-style-type: none"> • Notifications of infectious diseases (NOIDs) • Syndromic surveillance: systems and analyses

Continuation of Health Promotion / Health Screening

Addiction/Smoking

- [Drink Coach](#)
- [Stop smoking interventions and services](#)
- [Stoptober campaign evaluation](#)
- [Smokeless tobacco and cancer risk](#)
- [Smoking cessation](#)
- [Smoking](#)
- [Pharmacotherapies for smoking cessation: a meta-analysis of randomized controlled trials](#)
- [Landmark report reveals harms associated with gambling estimated to cost society at least £1.27 billion a year](#)

Immunisation / Travel Health

- [Vaccinations and infections](#)
- [Joint Committee on Vaccination and Immunisation](#)
- [Immunisation against infectious disease](#)
- [West Midlands Immunisation Service](#)
- [Immunisation information for Health Care Services within the West Midlands area](#)
- [Vaccination of individuals with uncertain or incomplete immunisation status](#)
- [WHO vaccine-preventable diseases: monitoring system. 2020 global summary](#)

Flu

- [Flu and flu vaccinations](#)
- [The national influenza immunisation programme 2021 to 2022](#)
- [Flu vaccines for the 2021 to 2022 season poster](#)
- [Appendix C: Flu vaccinator competency assessment tool](#)
- [Healthcare assistants and flu vaccinations](#)
- [Supporting Adult Carers](#)
- [National Minimum Standards and Core Curriculum for Immunisation Training of Healthcare Support Workers](#)
- [2021/22 seasonal flu vaccine reimbursement](#)
- [NHS England Enhanced Services Influenza Specifications](#)
- [DHSC Guidance for general practice in England on accessing DHSC centrally supplied flu vaccines](#)
- [The national influenza programme 2021/22 – vaccination of frontline primary care health care workers and available funding](#)
- [NHS England Enhanced Services Influenza Specifications](#)
- [Flu Campaign Resources 2021/22](#)

Continuation of Immunisation / Travel Health

Covid Vaccine	<ul style="list-style-type: none"> • Greenbook COVID-19 chapter 14a • UKHSA launches study to better understand COVID-19 vaccine response • JCVI issues updated advice on COVID-19 booster vaccination • Book or manage your coronavirus (COVID-19) vaccination • Vaccination eligibility for children with Williams Syndrome • Vaccine Data Resolution Service (VDRS)
Children	
Adults	<ul style="list-style-type: none"> • Immunisation patient group direction (PGD) templates • Shingles immunisation programme: introduction of Shingrix® letter
Vaccine Update	<ul style="list-style-type: none"> • Vaccine update • Vaccine Update Index • Having Flu and COVID Vaccines at Same Time Is Safe: ComFluCOV Study
PGD	<ul style="list-style-type: none"> • Live attenuated influenza vaccine nasal spray suspension (LAIV) Patient Group Direction (PGD)
Travel Health	<ul style="list-style-type: none"> • Travel Health Pro • Fit for Travel • Travel Health • Jane Chiodini • Corona.Help

Mental Health / Learning Disability / Disability

<p>Mental Health</p>	<ul style="list-style-type: none"> • Mental Health • Mental Health UK • Mind • Place2b • Rethink Mental Illness • Young Minds • Every Mind Matters • Calm • Headspace • We Can Talk • Home For Good: Successful community support for people with a learning disability, a mental health need and autistic people • Promoting NHS Urgent Mental Health Crisis Lines Communications pack • What to do if you're a young person and it's all getting too much • Children and young people's mental health services (CYPMHS) - help for children and young people • Advice for parents, guardians and carers on how to support a child or young person if you're concerned about their mental health • Get Your Mind Plan • Feeling low? • Better Health - Every Mind Matters - Resources
<p>Learning Disability</p>	<ul style="list-style-type: none"> • Learning Disabilities • Learning Disability England • Mencap • Bild • Autism • Improving identification of people with a learning disability: guidance for general practice • Learning Disability Practice Webinar 2021 - 3rd November
<p>Disability</p>	<ul style="list-style-type: none"> • Disability Rights UK • Disability Matters

From Cradle to...

<p>Infant Health</p>	<ul style="list-style-type: none"> • Tommys • First Steps Nutrition Trust • Bliss • NHS App - Baby Buddy • NHS App - Peanut • ICON Toolkit
<p>Child Health</p>	<ul style="list-style-type: none"> • Unicef • Health Professional Academy • Premature Babies • Child and Maternal Health • Women and Child First • Child Health Information Services • Place2b • Childhood eczema • Childhood asthma • How can public health nurses help deliver the Healthy Child Programme this winter?
<p>Adolescent Health</p>	<ul style="list-style-type: none"> • Adolescent Health Programme • Society for Adolescent Health and Medicine • Young Minds • Student Comms Toolkit • 11 things to remember for university this year
<p>Trans / Non-binary Health / LGBTQ+</p>	<ul style="list-style-type: none"> • LGBT Foundation • NHS population screening: information for trans and non-binary people • Cervical screening for trans men and/or non-binary people • Promoting the sexual health and wellbeing of gay, bisexual and other men who have sex with men

Mens Health	<ul style="list-style-type: none">• Mens Health Forum• Mens Health Month• Mens health.org• Mens Health UK• Men and mental health• Men's Mental Health Awareness• Prostate Cancer UK• Orchid Fighting Male Cancer• Prostate Cancer UK Facebook Page• Male Urology Learning Month 2021 - November
Women's Health	<ul style="list-style-type: none">• Womens Health Concern• Well Being of Women• Coppa Feel• Menopause Matters• The Menopause Charity• Royal College of Obstetricians and Gynaecologists - Guidelines• Pelvic Partnership• CRUK - Womens Cancer• Breast Cancer Now• Foundation for Women's Cancer• Eve Appeal• Ovarian.Org• Jo's Trust• Well Spring• Vagifem® 10 µg

Veterans Health	<ul style="list-style-type: none"> • The first call for help takes courage
Traveller / Gypsy Health	<ul style="list-style-type: none"> • Call to action to address the health inequalities experienced by Gypsy and Traveller communities
The Older Population	<ul style="list-style-type: none"> • BGS • Ageing Better • Homes that kill: 2 million homes in England pose a serious threat to health or safety
Carers	<ul style="list-style-type: none"> • The Care Provider Alliance • Skills for Care • The Care Workers' Charity • Supporting Adult Carers • Additional funding to help adult social care this winter • Adult Social Care Update
Complex Needs	
Family Planning & Sexual Health	
Family Planning	<ul style="list-style-type: none"> • Faculty of Sexual and Reproductive Healthcare Education and Training
Reproductive	<ul style="list-style-type: none"> • Tommys
Sexual Health	<ul style="list-style-type: none"> • Sexual and Reproductive Health Profiles • FSRH Education & Training • Sexually transmitted infections (STIs): annual data tables • Promoting the sexual health and wellbeing of people from a Black Caribbean background: an evidence-based resource • Promoting the sexual health and wellbeing of gay, bisexual and other men who have sex with men
Maternity / Neonate health	<ul style="list-style-type: none"> • Safety of Maternity services in England • Characteristics of women who stop smoking in pregnancy

Care of Patients with Long Term Conditions

LTC	<ul style="list-style-type: none"> • Chronic Conditions On Demand
Diabetes & Pre-Diabetes	<ul style="list-style-type: none"> • AZ Medical and Educational Goods and Services in Diabetes • Mumoactive • The mySugr App • Foot Check • Novo Nordisk resource centre for vulnerable people with diabetes • Recap: Diabetes standards consultation webinars
Respiratory	<ul style="list-style-type: none"> • Spirometry: step by step • ARTP • British Lung Foundation • The Primary Care Respiratory Society • SGSS Reported RSV cases by region (all ages) • Respiratory Syncytial Virus (RSV) comms toolkit • Guidance to parents on winter illnesses - RSV Advice from Dr Tania Hussain
COPD	<ul style="list-style-type: none"> • Right Breathe
Asthma	<ul style="list-style-type: none"> • FeNO - Fractional exhaled nitric oxide - for the diagnosis and management of Asthma • Asthma UK • Asthma: diagnosis, monitoring and chronic asthma management • GINA 2021: the missing pieces in the childhood asthma puzzle • GINA: Interim Guidance About COVID-19 & Asthma • Childhood asthma • Mepolizumab Reduced Exacerbations in Patients With Asthma and Atopy, Depression Comorbidities
Hypertension	<ul style="list-style-type: none"> • British Heart Foundation • Blood Pressure UK • Hypertension in adults: diagnosis and management • Hypertension in adults: diagnosis and treatment • Self-Monitoring of Blood Pressure in Hypertension: A UK Primary Care Survey

<i>Continuation of Long Term Conditions</i>	
CVD/AF	<ul style="list-style-type: none"> • QRISK@3-2018 risk calculator • Charity warns heart surgery waiting times could rise more than 40% by next spring without new funding • Heart Rhythm Alliance • CVD risk assessment and management • Health matters: preventing cardiovascular disease • NICE impact cardiovascular disease prevention
Heart Failure	<ul style="list-style-type: none"> • British Heart Foundation • British Society Guidelines
Cancer / Oncology	<ul style="list-style-type: none"> • Surviving Thyroid Cancer • Help Us Help You - Lung Cancer Symptoms • Becca Breast Cancer Support App • Breast Cancer Now • MoleCare App • BUILDING BACK CANCER SERVICES IN ENGLAND
Chronic Kidney Disease	<ul style="list-style-type: none"> • Kidney.Org • Kidney Quality Improvement Partnership • Annual hospital outpatient report published for 2020/21
Liver Disease	<ul style="list-style-type: none"> • British Liver Trust • Liver Research • BRITISH ASSOCIATION FOR THE STUDY OF THE LIVER • LIVERnORTH • LIVER DISEASE AND CIRRHOSIS

Continuation of Long Term Conditions

Frailty	<ul style="list-style-type: none"> • Recognising frailty • Identifying frailty • CLINICAL FRAILTY SCALE • Talking about frailty: The role of stigma and precarity in older peoples' constructions of frailty
Dementia	<ul style="list-style-type: none"> • Dementia UK • Understanding dementia • My House of Memories - NHS App • Dementia profile updates • Pathways from early life SES to dementia risk in old age: The role of personality • The Neuroprotective Effects of Moderate and Regular Caffeine Consumption in Alzheimer's Disease • Sitting Time, Physical Activity, and Cognitive Impairment in Midlife and Older Adults • Carers' experiences of assistive technology use in dementia care: a cross sectional survey
Blood Disorders	<ul style="list-style-type: none"> • Blood Cancer • Thalassaemia • ITP • Haemophilia • UK MDS Forum • Save a life. Give plasma. • Diagnosis and management of pernicious anaemia
G.I	<ul style="list-style-type: none"> • GIST Cancer UK
ENT	
G.U	
Neurological Conditions	<ul style="list-style-type: none"> • The Brain Tumour Charity • Narcolepsy.Org • ACNR • The Latest on Multiple Sclerosis and COVID-19 Vaccines
Musculoskeletal Conditions	<ul style="list-style-type: none"> • Rheumatology • National Axial Spondyloarthritis Society • Musculoskeletal health • Musculoskeletal health: 5 year prevention strategic framework • Faculty of Occupational Medicine

Continuation of Long Term Conditions

<p>Endocrine Disorders / Metabolic Disorders</p>	<ul style="list-style-type: none"> • Endocrinology • Turner Syndrome Support Society • Thyroid Eye Disease • British Thyroid Foundation • Thyroid UK • Pituitary • Addisons Disease • Parathyroid UK • The Royal Osteoporosis Society • Metabolic Support UK
<p>Dermatology</p>	<ul style="list-style-type: none"> • British Association of Dermatologists • Eczema • The British Skin Foundation • Acne vulgaris: management • The Primary Care Dermatology Society • Acne.org • Allergy UK • Urticaria • Hives • Sunburn • Causes of cancer and reducing your risk • What is Rosacea? • Rosecea • Herpes.org • Shingles • Fungal Skin Infection - Foot • The Psoriasis Association • Psoriasis • Melanoma • Skin Health Information • British Association of Plastic Reconstructive and Aesthetic Surgeons • Warts and verrucae

Continuation of Long Term Conditions

Allergy / Auto-immune / Genetic Conditions	<ul style="list-style-type: none"> • Allergy UK • Rheumatology • Addisons Disease
Obesity	<ul style="list-style-type: none"> • Obesity UK
Pain Management	<ul style="list-style-type: none"> • Pain Concern • UK career framework for pain nurses • IOTOD 2021 Autumn Webinar
Genomics	
Multi-Morbidity	<ul style="list-style-type: none"> • Multimorbidity • Multimorbidity / multiple long-term conditions (MLTC)
Minor Illness / First Contact Assessment	
Other	<ul style="list-style-type: none"> • Ultra Rare Disease Disorders And Disabilities Foundation • Atlas of Variation • MyCognition Home - NHS App

End of Life Care	
End of Life Care	
Covid-19	
Covid-19	<ul style="list-style-type: none"> • Covid Live • Coronavirus Statistics • Novel coronavirus (COVID-19) standard operating procedure COVID Oximetry @home • Directors of public health and the Covid-19 pandemic: 'A year like no other' • Covid-19 rapid guideline: Managing Covid-19 • MIMS Learning Live Digital - 22nd - 25th November • UKHSA publishes new recommendations for COVID-19 infection prevention and control • People at higher risk from coronavirus (COVID-19) • UK Health Security Agency News
Long Covid	<ul style="list-style-type: none"> • Supporting your recovery after COVID-19 • Long Covid Toolkit • Long term effects of COVID (Long COVID) • Post-COVID Syndrome (Long COVID) • COVID-19 Yorkshire Rehabilitation Screening Tool • FOM Guidance • Assessing long-term rehabilitation needs in COVID-19 survivors using a telephone screening tool (C19-YRS tool)
Covid Response / Recovery	<ul style="list-style-type: none"> • Capital funding needed to bring the NHS estate into the 21st century

News & Views	
Digital News / Remote Consultations	<ul style="list-style-type: none"> • Digital Health News Webinars • Digital Health News • The Digital Health Autumn Leadership Summit / 7-8 October 2021
PSNC News	<ul style="list-style-type: none"> • 1st October • 5th October
60 Second GP / Pulse / GP Online / HSJ	<ul style="list-style-type: none"> • 60 Second GP • GP Online • HSJ • Pulse Today
Primary Care Update / PCC	<ul style="list-style-type: none"> • Primary Care Bulletin
Kings Fund	Weekly News / Health Management and Policy Alert / Health and Well Being Bulletin / Digital Health Digest / Events Update
World Health Organisation	<ul style="list-style-type: none"> • WHO • OpenWHO
Midlands Academic Health Science Network	
Healthwatch	<ul style="list-style-type: none"> • Healthwatch
Black Country Bulletins	

<i>Continuation News & Views</i>	
IHCT / CCG / STP / Healthier Futures	<ul style="list-style-type: none"> • Healthier Futures • Black Country & West Birmingham CCG • Dudley Integrated Health and Care • Integrated Care Systems September Update from the System Transition Group
University / Student Nurses	<ul style="list-style-type: none"> • Trust Newsletter
Medisa / Univadis / Geeky Medics / GP Notebook / Medscape	<ul style="list-style-type: none"> • Univadis Newsletter • Univadis Nurses Headlines • Medisa • Geeky Medics • Medscape Nurses • Clinical Guidelines. Real-World Perspectives. • FAST FIVE QUIZZES
MIMS	<ul style="list-style-type: none"> • Latest MIMS news
The Health Foundation	<ul style="list-style-type: none"> • The Health Foundation • The Health Foundation Newsletter • A radical new vision for social care
The Health Care Leaders Update	<ul style="list-style-type: none"> • Health Care Leader News
PHE	
Innovation Agency	<ul style="list-style-type: none"> • Innovation Agency Exchange
RCN	<ul style="list-style-type: none"> • RCN • RCNiPlus • RCN Foundation • Learning Disability Practice Webinar 2021 - 3rd November

<i>Continuation News & Views</i>	
Nursing in Practice / Nursing Standard / Independent Nurse	<ul style="list-style-type: none"> • Nursing in Practice Bulletin • Nursing in Practice Clinical • GPN Bulletin • Independent Nurse Magazine • Practice Nursing
QNI	<ul style="list-style-type: none"> • QNI • Personalised Care Innovation Projects: Call for Applications • Applications are open for the NGS Elsie Wagg (Innovation) Scholarship Programme • QNI Conference Programme 2021 - 11th - 15th October
NMC	<ul style="list-style-type: none"> • NMC
CMO / CNO	<ul style="list-style-type: none"> • Social care reform and what it means for our workforce
Nice	<ul style="list-style-type: none"> • NICE • NICE News
RCGP / BMA / The Lancet	<ul style="list-style-type: none"> • The Lancet • British Medical Journal • Royal College of General Practitioners • QOF QI hub • BMA Update • BMA - Dealing with abuse of practice staff on social media from patients
Midlands Academic Health Science Network	<ul style="list-style-type: none"> • WMAHSN Network

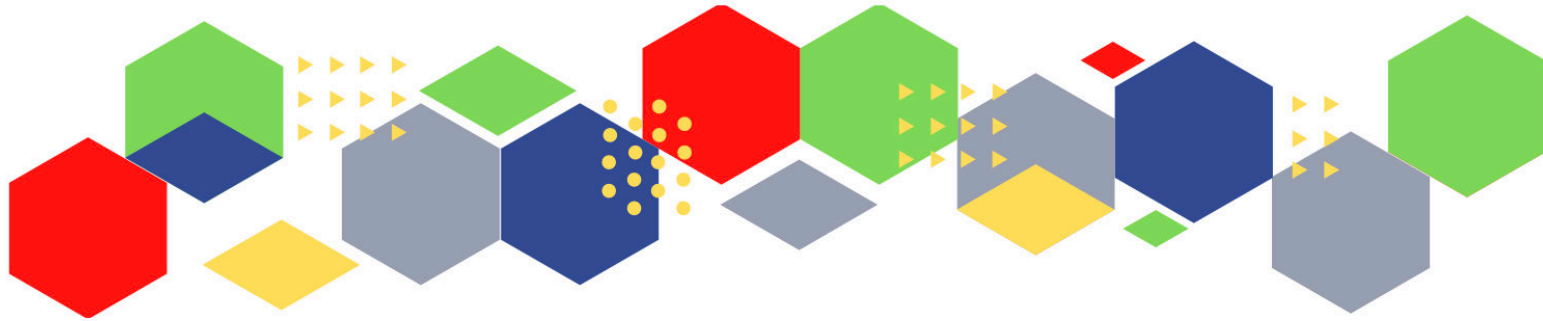
Free Training / Webinars / Meetings / CPD

Development / Information and Knowledge	<ul style="list-style-type: none"> • RCN Events - West Midlands • 16th November - MIMS Learning Live • THE BEST PRACTICE SHOW – 13-14 October 2021 • Inaugural Broadcasts 2021 • 20th October - System Leader: Integrating additional roles in primary care • 24th March 2022 - RCN Clinical Research Nursing Conference 2022 • Menopause Training • 12th October - Clinicians and Practitioners: Emerging video group clinics in cancer care • RCGP Learning • Deep Dive on DPP-4 Inhibitors • ISSUES & ANSWERS CONFERENCE SERIES 2021 • 8th October IRIS Workshop 1: DA and Mental Health • 15th October IRIS Workshop 2: DA and Complex Needs • 22nd October IRIS Workshop 3: DA and Elderly People • Bringing people together to share knowledge - Virtual Conferences • 12th October - Wessex AHSN - FeNO Learning Collaborative • 12th October - Webinar - Introduction to Proactive Care @home • 2nd, 3rd & 4th November - Eye health commissioning (primary care) – an introduction to contract management • 12th October - PHB Back to Basics Webinar • 13th October - The key ingredients for access improvement • 14th October - Health Inequalities - Priority 4: Accelerating Preventative Programmes
Blogs/Vlogs	<ul style="list-style-type: none"> • Personalised care supporting plans - March 2021 • Tackling the elective backlog – exploring the relationship between deprivation and waiting times
Area Bulletins	<ul style="list-style-type: none"> • Dudley
BCWB Training Hub	<ul style="list-style-type: none"> • Black Country and West Birmingham Training Hub
Research	<ul style="list-style-type: none"> • Science Daily • Multimorbidity / multiple long-term conditions (MLTC)
Freebies	<ul style="list-style-type: none"> • Blue Light Card
Other	

Continuation of Free Training / Webinars / Meetings / CPD

Podcasts

- [The Nursing Handover Podcast](#)
- [Nursing Standard Podcasts](#)
- [What Makes a Nurse?](#)
- [The MedicsPro Podcast](#)
- [Nursing Matters](#)
- [Welcome to the BJN Podcast](#)
- [Why we care](#)
- [EBN podcast](#)
- [This Is Nursing](#)
- [Maroon Mindset](#)
- [Teach me, I'm a Nurse](#)
- [Past Caring](#)
- [RCGP eLearning podcast](#)
- [The BMJ Podcast](#)
- [Primary Care Network podcasts](#)
- [The Professional Support Unit's Pandemic Podcast](#)
- [How can public health nurses help deliver the Healthy Child Programme this winter?](#)



Thank you for reading Future Proof Health's weekly news!
If you missed past issues, please click [here](#) to view them

More information can be found on our website, [here](#)

Don't forget to like us on [Facebook](#) & Follow us on [Twitter](#)

