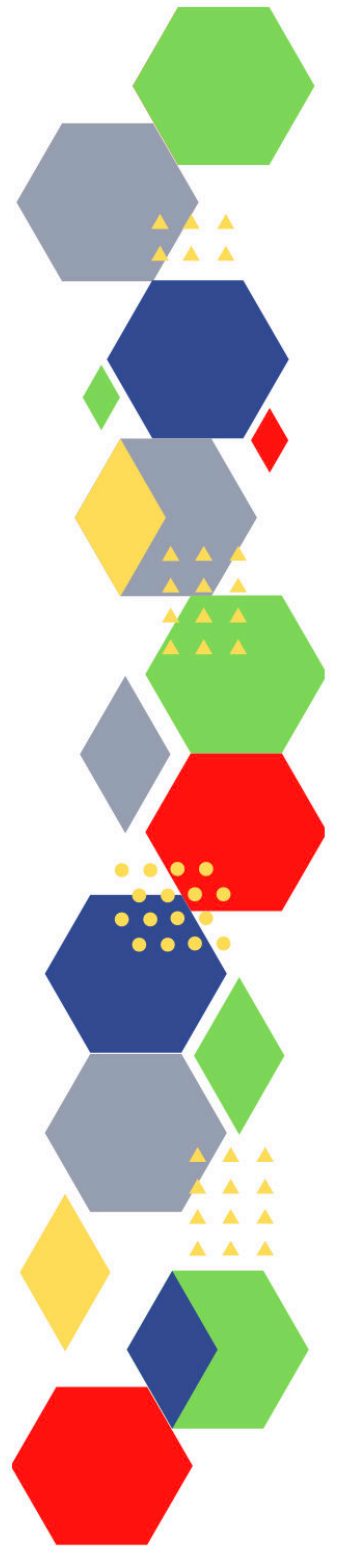
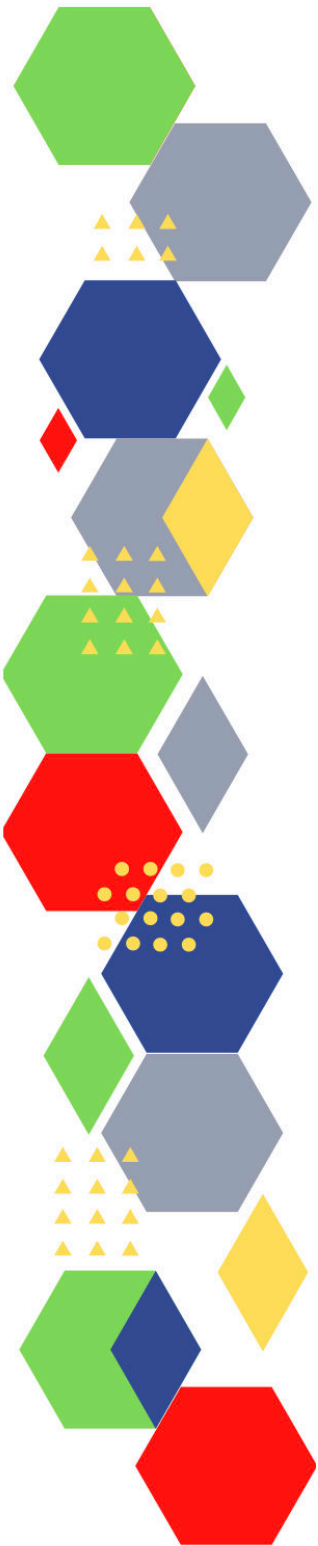




Future Proof Health Presents

Weekly News

20th January 2023



Communication	
Communication with Patients	
Communication within Teams	
Consent / Advocacy / IMCA	
People and Personal Development	
Personal / People Development / Leadership	<ul style="list-style-type: none"> • Accountability and delegation in practice • Climbing the leadership ladder: Why female nurses can struggle to reach the top • Compassionate leadership: what it means for nurses (cogora.com)
NHS Employers / HR / NHS Pension	<ul style="list-style-type: none"> • NHS Employers • Pensions Online
Health, Safety & Security	
<ul style="list-style-type: none"> • NPSA • Control of Substances Hazardous to Health (COSHH) 	
Gov UK - NHS	
CQC	<ul style="list-style-type: none"> • GP mythbusters • YouTube - Care Quality Commission • Maternity survey 2022 - Care Quality Commission (cqc.org.uk)
MIMS	<ul style="list-style-type: none"> • Prescribing Update • Follow drugs coming off patent with new MIMS tracker • First intravenous migraine preventative launched (mims.co.uk)
Drug / Device Alerts (MHRA)	<ul style="list-style-type: none"> • Drug Safety Update (mhradrugsafety.org.uk)

<p>Vaccines / Medications / Prescribing</p>	<ul style="list-style-type: none"> • Protocol for ordering, storing and handling vaccines • A Competency Framework for all Prescribers • Non-medical prescribing • The Human Medicines Regulations 2012 • RCN - Non-medical prescribers • Royal Pharmaceutical Society • Standards for prescribing • Clinical Negligence Scheme for General Practice • Home - electronic medicines compendium (emc) • Drug shortages - live tracker MIMS online • Pharmacists able to supply alternative penicillin to treat strep A - GOV.UK (www.gov.uk) • Drug Safety Update (mhradrugsafety.org.uk)
<p>Antibiotic steward-ship / Anti-microbial resistance</p>	
<p>Health Protection Review</p>	
<p>Emergency Situations</p>	<ul style="list-style-type: none"> • Resuscitation Council UK
<p>Infection Control / Infection Statics</p>	<ul style="list-style-type: none"> • NHS England » National infection prevention and control
<p>Safe Guarding</p>	<ul style="list-style-type: none"> • Female genital mutilation (FGM) • PREVENT • Child protection system in the UK • Safeguarding Adults • Safeguarding children: detailed information • Domestic abuse victim services, England and Wales: 2022 (www.gov.uk) • Dudley Financial Abuse Alliance - September 2022 (govdelivery.com)
<p>Practice Policies: Practice Management / Accountability Duty of Candour</p>	<ul style="list-style-type: none"> • General practice readiness checklist - NHS Digital

Audit	
Information Governance / Record Keeping	<ul style="list-style-type: none"> • Guide to Data Protection • Supporting general practice – Medical record keeping • Benefits of citizen access to records - NHS Digital
Quality & Service Improvement	
Quality, Service & Improvement	<ul style="list-style-type: none"> • The PRSB • General Practice Assessment Questionnaire (GPAQ) • Healthwatch • NHS Five Year Forward View • General Practice Forward View • NMC • Dr Jon Griffiths Blog • NHS Confed • Health Quality Improvement Partnership
Roles in General Practice Including AHP	<ul style="list-style-type: none"> • Standards for nursing associates • GP mythbuster 57: Health Care Assistants in General Practice • NHS England » Allied Health Professions
Revalidation	
Personal Practice & Development	
Practice Management	<ul style="list-style-type: none"> • Institute of General Practice Management • Practice Index • Developing Effective Written Responses to Complaints in Healthcare (moderngov.com)
EMIS / System One / IT	
Recruitment Employment / Retirement / Legacy Nursing	<ul style="list-style-type: none"> • General Practice Workforce Engagement Join the Conversation (scwcsu.nhs.uk)
NHS Staff Self Care & Resilience	<ul style="list-style-type: none"> • Samaritans • Mental Health at work • Calm • Supporting our NHS people • The Hub :: Black Country Healthcare NHS Foundation Trust • NHS England » Growing occupational health and wellbeing together: our roadmap for the future

Practice Transformation / Innovation Agency	<ul style="list-style-type: none"> • Benefits of citizen access to records - NHS Digital
Future of NHS / General Practice / NHS Recovery	<ul style="list-style-type: none"> • NHS England • NHS England » Primary care • NHS mandate 2022 to 2023 • Changes to NHS budget • Register with a GP Surgery • Press release CIPFA publishes interesting care report • BBC Radio 4 - The Briefing Room, NHS: Are there any quick fixes?
NHS Resolution	
ICS / ICB / ICP / PCN Commissioning	<ul style="list-style-type: none"> • Integrated Care Board, Sub Integrated Care Board and commissioning region data: performance October, provisional November 2022 (kingsfundmail.org.uk)
QOF / PHOF / DES / LES / NHS Contract / CQRS / CQUIN	
Leadership / Innovation	<ul style="list-style-type: none"> • Release your potential The King's Fund (kingsfund.org.uk)
Greener NHS	<ul style="list-style-type: none"> • Greener Allied Health Professional hub (england.nhs.uk)
Personalised Care	
Personalised Care / Self Care / Social Prescribing / Health Coaching	<ul style="list-style-type: none"> • Self Care forum • Personalised Care Institute • Personalised care • Social Prescribing Academy
Group consultation	
Working Differently	
Shared Decision Making	<ul style="list-style-type: none"> • Personalised Care Institute

Equality & Diversity	
Equality & Diversity	<ul style="list-style-type: none"> • Public Health Profiles • Open Wounds exhibition The King's Fund (kingsfund.org.uk)
Inclusion Health	<ul style="list-style-type: none"> • Health Creation Academic Network • Inequality on the inside
Poverty / Homelessness	<ul style="list-style-type: none"> • Crisis • This is Poverty
Population Health / Health Communities	
Thrive Into Work	<ul style="list-style-type: none"> • Thrive into Work • Thrive into Work Referral form
Health Inequalities	<ul style="list-style-type: none"> • NHS News • Health inequalities – from evidence to action • NHF Care Housing Booklet 2022 • RPS Tackling Health Inequalities.pdf (rpharms.com) • Health inequalities – from evidence to action The King's Fund (kingsfund.org.uk) • Segment tool: January 2023 data update (health inequalities) (kingsfundmail.org.uk)
Trans / Non-binary Health / LGBTQ+	<ul style="list-style-type: none"> • LGBT Foundation • Surgery staff grab sheet (squarespace.com) • Trans inclusive organisations — TransActual • TransActual - Healthcare • CliniQ • Sexual orientation and gender identity: Census 2021 in England and Wales (outlook.com)
Migrant / Refugee Health	<ul style="list-style-type: none"> • THE REFUGEE & MIGRANT CENTRE • Arrivals from Ukraine: advice for primary care - GOV.UK (www.gov.uk) • Migrant health guide - GOV.UK (www.gov.uk) • Inclusion Health: applying All Our Health (www.gov.uk) • Inclusion Health Self Assessment Tool for Primary Care Networks (inclusion-health.org) • Refugee Council information, facts and guides • Doctors of the World resources including toolkits and translated resources

Traveller / Gypsy / Romany Health	<ul style="list-style-type: none"> • Gypsy Roma and Traveller History and Culture The Traveller Movement • Friends, Families and Travellers (gypsy-traveller.org)
Veterans Health	<ul style="list-style-type: none"> • The first call for help takes courage
Voluntary / Charity	
Management of Emergency Situations	
Management of Emergency Situations	
111 / Emergency Care	
First Contact	<ul style="list-style-type: none"> • Supporting general practice – Common pitfalls • Paediatrics for Primary Care (and anyone else) (gppaedstips.blogspot.com)
Red Flags	
Sepsis	<ul style="list-style-type: none"> • Sepsis: recognition, diagnosis and early management • Sepsis guidance implementation advice for adults • Sepsis in Children • Sepsis Trust • quick SEPSIS RELATED ORGAN FAILURE ASSESSMENT
Therapeutic Monitoring	
OSCE	<ul style="list-style-type: none"> • Geeky Medics • Abdominal Examination - Demonstration - YouTube • Cardiovascular Examination - Demonstration - YouTube • Respiratory Examination - Demonstration - YouTube • Physical Diagnosis Skills - University of Washington School of Medicine
Role Specific	
Cervical Cytology	<ul style="list-style-type: none"> • Guide to the interim assessment • British Association for Cytopathology • Lab Tests Online

Ear Care	<ul style="list-style-type: none"> • Ear Care Centre • RNID
Wound Management / Compression	<ul style="list-style-type: none"> • Microworld • Tissue Viability Society • The BLS
Minor Surgery	
Obtaining Samples / Results	<ul style="list-style-type: none"> • Lab Tests Online
Health Promotion / Health Screening	
Health Promotion / Population Health	<ul style="list-style-type: none"> • Better Health • SHAPE Strategic Health Asset Planning and Evaluation (shapeatlas.net)
Health Screening	<ul style="list-style-type: none"> • PHE Screening
PHE / OHID / UKHSA	<ul style="list-style-type: none"> • Knowledge & Library Services • Campaign Resources • Public Health Profiles • Health Publications • Health Profile for England 2021 • English indices of deprivation 2019
NHS Health Check	<ul style="list-style-type: none"> • NHS Health Check
UK GOV Flu / Covid / Bird Flu	<ul style="list-style-type: none"> • COVID-19 testing for people arriving from China - UK Health Security Agency (blog.gov.uk) (outlook.com) • SARS-CoV-2 variants of concern and variants under investigation in England: technical briefing 49 (kingsfundmail.org.uk)
UK GOV - General Practice	<ul style="list-style-type: none"> • Adult social care monthly statistics, England: January 2023 (kingsfundmail.org.uk) • Patients registered at a GP practice: January 2023 (kingsfundmail.org.uk) • Fit notes issued by GP practices, England: September 2022 (kingsfundmail.org.uk)

UK GOV - Secondary Care	
UK GOV Deaths / Suicide / Palliative Care / Mortality / End of Life	<ul style="list-style-type: none"> • Summary Hospital-level Mortality Indicator, deaths associated with hospitalisation: England, September 2021 - August 2022 (kingsfundmail.org.uk) • Excess mortality in England and English regions - GOV.UK (kingsfundmail.org.uk)
UK GOV - LTC - including cancer	
Surveillance / Syndromic Surveillance	
Ambulance / Remote Health / 111 / Urgent Care / A&E	<ul style="list-style-type: none"> • Provisional accident and emergency quality indicators for England: November 2022, by provider (kingsfundmail.org.uk) • Provisional monthly Hospital Episode Statistics for admitted patient care, outpatient and accident and emergency data: April 2022 - November 2022 (kingsfundmail.org.uk)
UK GOV Infectious Disease Monitoring / NOIDS	<ul style="list-style-type: none"> • Weekly Statutory Notification of Infectious Diseases (NOIDs) Report (outlook.com) • National norovirus and rotavirus surveillance reports: 2022 to 2023 season - GOV.UK (kingsfundmail.org.uk) • Notifiable diseases weekly report: week 1 (2023) (kingsfundmail.org.uk)
UK GOV - Mental Health / Learning Difficulties	<ul style="list-style-type: none"> • Mental health services monthly statistics: performance October, provisional November 2022 (kingsfundmail.org.uk) • National Estimates - Performance October, 2022 - NDRS (digital.nhs.uk) • Out of area placements in mental health services: October 2022 (kingsfundmail.org.uk) • Psychological therapies: reports on the use of IAPT services: England, October 2022 final including a report on the IAPT Employment Advisers pilot (kingsfundmail.org.uk)
Addiction/Smoking	<ul style="list-style-type: none"> • Drink Coach • Stop smoking interventions and services • England will miss Government's smokefree target of 2030 (cogora.com) • First nicotine replacement therapy approved for vaping cessation (outlook.com)

Immunisation / Travel Health

- [Joint Committee on Vaccination and Immunisation](#)
- [Immunisation against infectious disease](#)
- [West Midlands Immunisation Service](#)
- [Vaccination of individuals with uncertain or incomplete immunisation status](#)
- [Immunisation Queries: Immunisation information for Health Care Services within the West Midlands area](#)
- [Immunisation](#)
- [Vaccinations and infections](#)
- [Immunisation \(independentnurse.co.uk\)](#)

Flu	<ul style="list-style-type: none"> • Flu and flu vaccinations • The national influenza immunisation programme 2021 to 2022 • Flu vaccines for the 2021 to 2022 season poster • Appendix C: Flu vaccinator competency assessment tool • Healthcare assistants and flu vaccinations
Covid Vaccine	<ul style="list-style-type: none"> • Greenbook COVID-19 chapter 14a • COVID-19 Vaccine Moderna e-learning now available • GP COVID-19 vaccine dashboard • Updates made to the COVID-19 vaccination learning programme • Seasonal influenza vaccine uptake in GP patients: winter season 2021 to 2022 - GOV.UK (www.gov.uk)
Children	<ul style="list-style-type: none"> • Child Health Information Services Local Government Association
Adults	<ul style="list-style-type: none"> • Immunisation patient group direction (PGD) templates • Shingles immunisation programme: introduction of Shingrix® letter
Vaccine Update	<ul style="list-style-type: none"> • Vaccine update: issue 332, October 2022, flu special edition - GOV.UK (www.gov.uk) • Vaccine update: issue 333, December 2022 - GOV.UK (www.gov.uk)
PGD	
Travel Health	<ul style="list-style-type: none"> • Travel Health Pro • Fit for Travel • Travel Health • Jane Chiodini • Corona.Help

Mental Health / Learning Disability / Disability

<p>Mental Health</p>	<ul style="list-style-type: none"> • Mental Health • Mental Health UK • Mind • Place2b • Rethink Mental Illness • Young Minds • Every Mind Matters • Calm • Headspace • Better Health - Every Mind Matters - Resources • ZSA Training • NHS > Mental Health • UK adults report poorer sleep, seeing friends less often and exercising less as financial strain takes its toll - new survey results Mental Health Foundation
<p>Learning Disability</p>	<ul style="list-style-type: none"> • Learning Disabilities • Learning Disability England • Mencap • Bild • Autism • Use of reasonable adjustments to reduce health inequalities for people with a learning disability • Harshi's learning disability annual health check and health action plan - YouTube
<p>Disability (Inc. hearing and visual)</p>	<ul style="list-style-type: none"> • Disability Rights UK • Disability Matters • RNID - National hearing loss charity • Spokzpeople • Sight Loss Data Tool RNIB

From Cradle to...

<p>Infant Health</p>	<ul style="list-style-type: none"> • Tommys • First Steps Nutrition Trust • Bliss • ICON Toolkit • Sandwell - BC - ICB Primary Care - 7 minute briefing
<p>Child Health</p>	<ul style="list-style-type: none"> • Unicef • Health Professional Academy • Premature Babies • Child and Maternal Health • Women and Child First • Child Health Information Services • Place2b • Childhood eczema • Childhood asthma • Paediatrics for Primary Care (and anyone else) (gppaedtips.blogspot.com) • Barnardos • Childrens Society • Action for Children • Infant allergy (infantallergyconference.com) • Back to school - 5 things to do to help manage winter illness - UK Health Security Agency (blog.gov.uk) • Child flu vaccine - NHS (www.nhs.uk) • Group A Strep - What you need to know - UK Health Security Agency (blog.gov.uk)
<p>Adolescent Health</p>	<ul style="list-style-type: none"> • Adolescent Health Programme • Society for Adolescent Health and Medicine • Young Minds
<p>Mens Health</p>	<ul style="list-style-type: none"> • Mens Health Forum • Mens Health Month • Mens health.org • Mens Health UK • Men and mental health • Men's Mental Health Awareness • Prostate Cancer UK • Orchid Fighting Male Cancer • Prostate Cancer UK Facebook Page • Movember

Women's Health

- [Womens Health Concern](#)
- [Well Being of Women](#)
- [Coppa Feel](#)
- [Menopause Matters](#)
- [The Menopause Charity](#)
- [Royal College of Obstetricians and Gynaecologists - Guidelines](#)
- [Pelvic Partnership](#)
- [CRUK - Womens Cancer](#)
- [Breast Cancer Now](#)
- [Foundation for Women's Cancer](#)
- [Eve Appeal](#)
- [Ovarian.Org](#)
- [Jo's Trust](#)
- [Well Spring](#)
- [Know your Lemons](#)
- [British Menopause Society - www.thebms.org.uk](#)
- [NHS - www.nhs.uk/conditions/menopause](#)
- [Henpicked - henpicked.net](#)
- [The Menopause Exchange - www.menopause-exchange.co.uk](#)
- [Women's Health Concerns - www.womens-health-concern.org](#)
- [Menopause Matters - www.menopausematters.co.uk](#)
- [The Daisy Network - www.daisynetwork.org](#)
- [Dr Louise Newson's Menopause Doctor - www.menopausedoctor.co.uk](#)
- [Manage My Menopause - www.managemymenopause.co.uk/menopause-advice](#)
- [Menopause Support - menopausesupport.co.uk](#)
- [Bourne2Care](#)
- [Vaginal atrophy: what is it and how can it be treated? \(practicenursing.com\)](#)
- [Overview | Menopause: diagnosis and management \(bing.com\)](#)
- [Understanding the risks of breast cancer \(bing.com\)](#)
- [A guide to Hormone Replacement Therapy \(HRT\) \(independentnurse.co.uk\)](#)
- [How to manage genitourinary symptoms of menopause \(cogora.com\)](#)

The Older Population	<ul style="list-style-type: none"> • BGS • Ageing Better • Delirium Champions - YouTube • Older people care
Carers / Social Care / Care Homes	<ul style="list-style-type: none"> • The Care Provider Alliance • Skills for Care • The Care Workers' Charity • Supporting Adult Carers • The Care UK • BREAKING NEWS from The Carer (ourmailsender4.com) • Adult Social Care Update • Our support for adult social care this winter - GOV.UK (www.gov.uk) • Adult social care funding and eligibility The King's Fund (kingsfund.org.uk) • Read Issue 132 of The Carer Digital Now! (ourmailsender4.com)
Young Carers	
Family Planning & Sexual Health	
Family Planning	<ul style="list-style-type: none"> • Faculty of Sexual and Reproductive Healthcare Education and Training • Contraception after the age of 40: A guide for nurses (independentnurse.co.uk)
Reproductive	<ul style="list-style-type: none"> • Tommys
Sexual Health / Sexual Abuse	<ul style="list-style-type: none"> • Sexual and Reproductive Health Profiles • FSRH Education & Training
Maternity / Neonate health	<ul style="list-style-type: none"> • Migraine and pregnancy (gpnotebook.com) • Vaginal candidiasis in pregnant women: A guide for nurses (independentnurse.co.uk)

Care of Patients with Long Term Conditions

LTC	<ul style="list-style-type: none"> • Physical Activity for the Prevention and Management of Long-Term Conditions • Health A to Z
Diabetes & Pre-Diabetes	<ul style="list-style-type: none"> • Mumoactive • The mySugr App • PCDS Entry level module series - Foot Check • Type 2 diabetes in adults: management • DiabetesontheNet Online diabetes journals, education and resources for healthcare professionals. • New “artificial pancreas” technology set to change the lives of people having difficulty managing their type 1 diabetes News News NICE • Diabetes and chronic kidney disease (gpnotebook.com) • CPD: Gaining back control of type 2 diabetes post-pandemic (cogora.com)
Respiratory	<ul style="list-style-type: none"> • Spirometry: step by step • ARTP • British Lung Foundation • The Primary Care Respiratory Society • Respiratory – Respimat® patient resources Boehringer Ingelheim (boehringer-ingelheim.com) • Respiratory News & Advice (nursinginpractice.com) • Dudley pulmonary rehab - Template PI (dgft.nhs.uk) • Christmas is coming (engagingnetworks.app)
COPD	<ul style="list-style-type: none"> • Right Breathe • GOLD COPD 2022 strategy Independent professional body guideline Guidelines • AstraZeneca Webinars: Transforming Respiratory Care- January
Asthma	<ul style="list-style-type: none"> • Asthma UK • Asthma: diagnosis, monitoring and chronic asthma management • Global Initiative for Asthma • British guideline on the diagnosis and pharmacological management of asthma in children • British Thoracic Society guidelines for home oxygen use in adults: accredited by NICE • SIGN and BTS management of asthma in children guideline Independent professional body guideline Guidelines
Hypertension	<ul style="list-style-type: none"> • British Heart Foundation • Blood Pressure UK • Hypertension in adults: diagnosis and management • Hypertension in adults: diagnosis and treatment • Hypertension: symptoms to look out for and treatment options (rcni.com) • Ten top tips: Hypertension diagnosis and management • Blood pressure medication at night compared with the morning (gpnotebook.com)

Continuation of Long Term Conditions

CVD/AF	<ul style="list-style-type: none"> • QRISK®3-2018 risk calculator • Heart Rhythm Alliance • CVD risk assessment and management • NHS lipid management pathway NHS guideline Guidelines • Cholesterol & Diabetes Patient Information Booklet - Benecol HCP - UK • Roll up, roll up! Who wants a statin? • Use of statins in older people (gpnotebook.com)
Heart Failure	<ul style="list-style-type: none"> • British Heart Foundation • British Society Guidelines • Home - Pumping Marvellous • Heart Failure UK Guidelines
Cancer / Oncology	<ul style="list-style-type: none"> • Surviving Thyroid Cancer • Help Us Help You - Lung Cancer Symptoms • Breast Cancer Now • Macmillian • Bowel Cancer UK • Brain Trust • CRUK • Action Cancer • Foundation for Women's Cancer • NHS England » Cancer • Publication on Asymptomatic Men • NHS England » Rapid cancer diagnostic and assessment pathways
Chronic Kidney Disease	<ul style="list-style-type: none"> • Kidney.Org • Kidney Quality Improvement Partnership • Diabetes and chronic kidney disease (gpnotebook.com)
Liver Disease	<ul style="list-style-type: none"> • British Liver Trust • Liver Research • BRITISH ASSOCIATION FOR THE STUDY OF THE LIVER • LIVERnORTH • LIVER DISEASE AND CIRRHOSIS

Continuation of Long Term Conditions

Blood Disorders	<ul style="list-style-type: none"> • Blood Cancer UK • UK Thalassaemia Society • The ITP Support Association • UK-ITP Paediatric ITP Registry • The Haemophilia Society • UK MDS Forum • Pernicious Anaemia Society • Haemochromatosis UK
G.I	<ul style="list-style-type: none"> • GIST Cancer UK • Pernicious Anaemia Society • Antibiotics shown to reduce risk of aspirin-induced GI bleeding
ENT	
G.U	<ul style="list-style-type: none"> • Methenamine hippurate in the prevention of UTIs (gpnotebook.com)
ME / CFS / Fibromyalgia	<ul style="list-style-type: none"> • ME Association • ME Research • Action for M.E • Fibromyalgia Action UK • Fibromyalgia UK • Home - Fibromyalgia Awareness UK (fibroawarenessuk.org) • Fibromyalgia - Symptoms, diagnosis and treatment BMJ Best Practice • Fibromyalgia - The Brain Charity
Neurological Conditions	<ul style="list-style-type: none"> • The Brain Tumour Charity • Narcolepsy.Org • ACNR • MS Society UK Information, research and support Multiple Sclerosis Society UK • Home MS Trust • First intravenous migraine preventative launched (mims.co.uk)




Continuation of Long Term Conditions

<p>Musculoskeletal Conditions</p>	<ul style="list-style-type: none"> • Rheumatology • National Axial Spondyloarthritis Society • Musculoskeletal health • Musculoskeletal health: 5 year prevention strategic framework • Faculty of Occupational Medicine • Guide to embedding your first contact physiotherapy service • NHS England » An improvement framework to reduce community musculoskeletal waits while delivering best outcomes and experience
<p>Endocrine Disorders / Metabolic Disorders</p>	<ul style="list-style-type: none"> • Society for Endocrinology • Turner Syndrome Support Society • Thyroid Eye Disease • British Thyroid Foundation • Thyroid UK • The Pituitary Foundation • Addisons Disease • Parathyroid UK • The Royal Osteoporosis Society • Metabolic Support UK
<p>Frailty</p>	<ul style="list-style-type: none"> • Recognising frailty • Identifying frailty • CLINICAL FRAILTY SCALE
<p>Dementia / Alzheimers</p>	<ul style="list-style-type: none"> • Dementia UK • Age UK - Understanding Dementia • Delirium Champions • Alzheimers Society • CPD: Managing dementia as a palliative condition (cogora.com)

Continuation of Long Term Conditions

Dermatology	<ul style="list-style-type: none"> • British Association of Dermatologists • Eczema • The British Skin Foundation • Acne vulgaris: management • The Primary Care Dermatology Society • Acne.org • Allergy UK • Urticaria • Hives • Sunburn • Causes of cancer and reducing your risk • What is Rosacea? • Rosecea • The Rosacea Forum • Herpes Viruses Association • Shingles • Fungal Skin Infection - Foot • The Psoriasis Association • National Psoriasis Foundation • Melanoma • Skin Health Information • British Association of Plastic Reconstructive and Aesthetic Surgeons - Procedure Guides • Warts and verrucae • Dermatology
Allergy / Auto-immune / Genetic Conditions	<ul style="list-style-type: none"> • Allergy UK • British Society for Rheumatology • Addisons Disease • Managing latent autoimmune disease in adults (independentnurse.co.uk)
Obesity	<ul style="list-style-type: none"> • Obesity UK
Pain Management	<ul style="list-style-type: none"> • Pain Concern
Osteoporosis / Falls	

Continuation of Long Term Conditions

Genomics	
Loneliness	
Multi-Morbidity	<ul style="list-style-type: none"> • Multimorbidity • Multimorbidity / multiple long-term conditions (MLTC)
Minor Illness / First Contact Assessment / OSCE	<ul style="list-style-type: none"> • Fact Sheets - Self Care Forum • OSCE Checklists  (mlsend.com) • OSCE Flashcards  (mlsend.com) • 600+ OSCE Stations ✨ (mlsend.com) • Anatomy Flashcards  (mlsend.com) • Health A to Z • #EM3: East Midlands Emergency Medicine Educational Media • ABDOMINAL SWELLING (cogora.com) • EPIGASTRIC PAIN (cogora.com) • Arm and Shoulder Pain - Nursing in Practice Reference • BLOOD IN URINE (cogora.com) • CHRONIC SHORTNESS OF BREATH (cogora.com) • Referral criteria from primary care - if possible migraine headache
Other / Case Studies	
Winter / Summer Pressures	<ul style="list-style-type: none"> • Breaking the cycle of winter crises (independentnurse.co.uk) • NHS England » Supporting general practice, primary care networks and their teams through winter and beyond

End of Life Care	
End of Life Care / Bereavement	<ul style="list-style-type: none"> • ReSPECT for healthcare professionals • Hospice UK • Palliative and End of Life Care Profiles - OHID (phe.org.uk) • How to support a good death (independentnurse.co.uk)
Flu / Covid-19 / Monkeypox	
Covid-19	<ul style="list-style-type: none"> • NHS England » Fact sheet – Role of general practice teams in supporting patient access to COVID-19 treatments • Coronavirus » Letter to general practices: deployment of COVID-19 treatments for highest risk non-hospitalised patients (england.nhs.uk) • GP Staff Facing Flow Diagram Jan2023 (england.nhs.uk)
Flu	
Long covid	<ul style="list-style-type: none"> • Your Covid Recovery • Long Term Effects of Covid • Post Covid Syndrome - Long Covid • COVID-19 Yorkshire Rehabilitation Screening Tool • FOM Guidance • Long Covid Toolkit • Caring for People with Long Covid (qni.org.uk)
MONKEY POX	

News & Views

<p>Digital News / Remote Consultations / AI</p>	<ul style="list-style-type: none"> • Digital Health News Webinars • Digital Health News • NHS Digital • DigiHealthWell • Public Sector Events, Conferences and Training - Inside Government • Digital Transformation • Watch our highlights from The Digital Healthcare Show 2022! • [Webinar] Implementing the Core Information Standard (mailchi.mp) • Digital Health Digest - 13 January 2023 (mailchi.mp) • Digital Health News - 12 January 2023 (mailchi.mp) • General practice readiness checklist - NHS Digital • Your daily news updates from Digital Health (campaign-archive.com)
<p>PSNC News / Pharmacy</p>	<ul style="list-style-type: none"> • National Pharmacy Association • Royal Pharmaceutical Society • Medicines Learning Portal • Specialist Pharmacy Service • PSNC Newsletter: 18th January (mailchi.mp) • PSNC Newsletter: 13th January (mailchi.mp)
<p>Pulse / GP Online / HSJ / NB Medical</p>	<ul style="list-style-type: none"> • GP Online • HSJ • Pulse Today

Primary Care Update / PCC / PPP	<ul style="list-style-type: none"> • Public Policy Projects News • Primary Care Bulletin
Proactive Care	
Kings Fund	<ul style="list-style-type: none"> • The Kings Fund • Library services The King's Fund (kingsfund.org.uk) • Supporting the core needs of staff (kingsfundmail.org.uk) • What are the connections between health, racism and inequalities? (kingsfundmail.org.uk) • Integrated care systems highlights (kingsfundmail.org.uk) • Digital Health Digest (kingsfundmail.org.uk)
Health Care Leaders Newsletters	
World Health Organisation	<ul style="list-style-type: none"> • WHO • OpenWHO
IHCT / CCG / STP / Healthier Futures	<ul style="list-style-type: none"> • Black Country & West Birmingham CCG • Dudley Integrated Health and Care • Home :: Black Country Healthcare NHS Foundation Trust • SharePoint

Continuation of News & Views

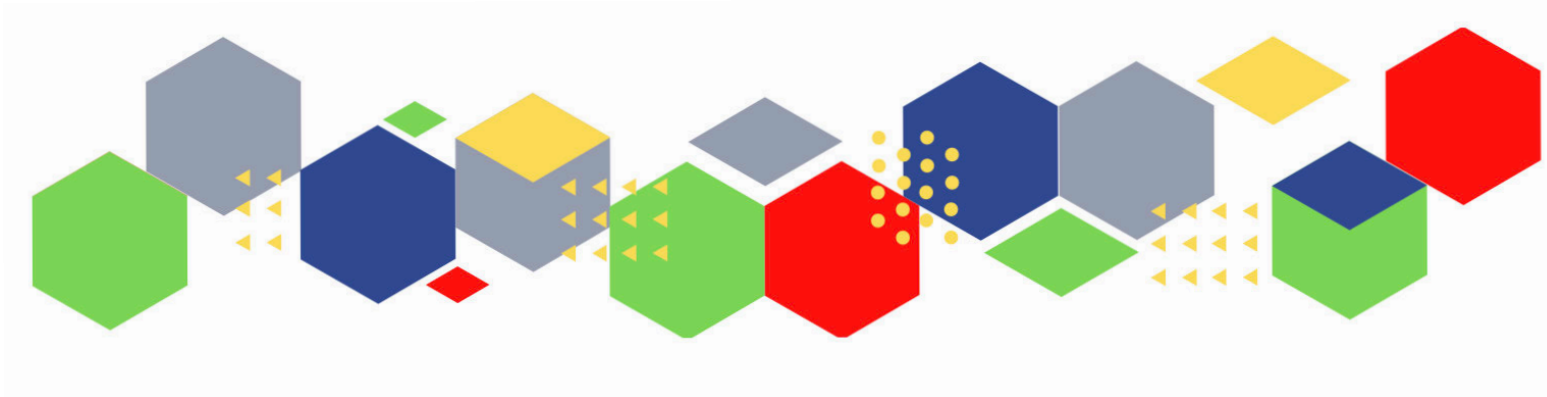
NHSI / NHSE	
University / Student Nurses	
Medisa / Univadis / Geeky Medics / GP Notebook / Medscape	<ul style="list-style-type: none"> • Medisa • Geeky Medics • Medscape Nurses • GP Notebook • Geeky Medics - YouTube • GPnotebook quick update (contains promotional information from Johnson & Johnson: New NRT Webinar- Book Your Place Today.) (mailchi.mp) • Geeky Medics Book Pre-Orders & our Latest Content! (mailerlite.com)
Nurse Guidelines	
The Health Foundation	<ul style="list-style-type: none"> • The Health Foundation
The Health Care Leaders Update	<ul style="list-style-type: none"> • Health Care Leader News
Practice Index	
Innovation Agency	<ul style="list-style-type: none"> • Innovation Agency Exchange
RCN	<ul style="list-style-type: none"> • RCN
Cavell Trust	<ul style="list-style-type: none"> • December News
Nursing in Practice / Nursing Standard / Independent Nurse	<ul style="list-style-type: none"> • Nursing Times • JCN Newsletter • GPN Bulletin • Nursing in Practice Bulletin • Independent Nurse

Continuation of News & Views

QNI	<ul style="list-style-type: none"> • QNI • Talk To Us @ – The Queen's Nursing Institute (qni.org.uk) • QNI publishes community practice teaching standards (cogora.com) • Community Nursing Practice Teaching Standards – The Queen's Nursing Institute (qni.org.uk)
NMC	<ul style="list-style-type: none"> • NMC
CMO / CNO	
Nice	<ul style="list-style-type: none"> • NICE
RCGP / BMA / The Lancet	<ul style="list-style-type: none"> • The Lancet • British Medical Journal • Royal College of General Practitioners • Live upcoming webinar Exploring the links between gambling harm and suicide in contemporary Britain (bma-mail.org.uk)
Nuffield Health	
Midlands Academic Health Science Network	<ul style="list-style-type: none"> • WMAHSN Network
Healthwatch	<ul style="list-style-type: none"> • Healthwatch
CPD News	<ul style="list-style-type: none"> • CPD News
Other	<ul style="list-style-type: none"> • Patients Association • Innovation Hub

Free Training / Webinars / Meetings / CPD	
Development / Information and Knowledge	<ul style="list-style-type: none"> • Red Whale Training • Issues & Answers • You are invited to attend the Leading Educational Event for Primary Care Nurses (mahealthcarevents.co.uk) • We've done the hard work, so you don't have to (bestpracticeshow.co.uk) • ICYMI: Claire Fuller confirmed for Best Practice London (bestpracticeshow.co.uk) • Fundamentals of change and improvement programme application 2022/23 (office.com) • Wound Care Alliance Webinar Series launches this month (mahealthcarevents.co.uk) • 23 January, 12.30pm – 1.30pm. Introduction to the NHS People Profession Map • 24 January, 2pm – 4pm. Improving the Safe and Effective Use of DOACs • 24 January, 3pm – 4.30pm. Best Practice in Annual Health Checks for People with a Learning Disability • 25 January, 1pm – 2pm. New statutory guidance on working with people and communities • Primary Care Nursing Live 2023 - Register now! (mahealthcarevents.co.uk) • Watch our series of General Practice webinars • Watch our series of Primary Care Network webinars • Part 1 - Hyperkalaemia in Chronic Kidney Disease Registration, Wed 15 Feb 2023 at 20:00 Eventbrite • Part 2 - Hyperkalaemia in Heart Failure Registration, Mon 6 Mar 2023 at 20:00 Eventbrite
Free to RCN	<ul style="list-style-type: none"> • RCNi events RCNi • RCN Improving Physical and Mental Health Outcomes Professional Services Royal College of Nursing • Leading Sustainability in Health and Social care Professional services Royal College of Nursing (rcn.org.uk) • RCN IPC Programme Professional Services Royal College of Nursing
MIMMs Learning	
Eventbrite	
e-Learning for Health	
YouTube	<ul style="list-style-type: none"> • NHS England • Black Country Healthcare - YouTube

Future Proof Health Training	<ul style="list-style-type: none"> • Training
BCWB Training Hub	<ul style="list-style-type: none"> • Latest news from the Black Country Training Hub (campaign-archive.com) • Cuppa and Catch-up for Practice Nurses, ANPs, Nursing Associates and HCAs - all welcome!-20221201_123443-Meeting Recording • Wolverhampton Place – Clinical Education Event Tickets, Wed 8 Feb 2023 at 12:00 Eventbrite
Evidence based care	
Podcasts	<ul style="list-style-type: none"> • The Nursing Handover Podcast • Nursing Standard Podcasts • Nursing Matters • Welcome to the BJN Podcast • Cygnet Health Care Podcast • EBN podcast • This Is Nursing • Teach me, I'm a Nurse • Past Caring • RCGP eLearning podcast • The BMJ Podcast • Primary Care Network podcasts • The Professional Support Unit's Pandemic Podcast • The Next GenCast
Apps	
Area Bulletins	
Research	<ul style="list-style-type: none"> • Science Daily • Multimorbidity / multiple long-term conditions (MLTC) • National Institute for Health and Care Research
Blogs/Vlogs	<ul style="list-style-type: none"> • Blog NB Medical
Freebies	<ul style="list-style-type: none"> • Blue Light Card
Campagne Links	
Other	



Thank you for reading Future Proof Health's weekly news!

If you missed past issues, please click [here](#) to view them

More information can be found on our website, [here](#)

Don't forget to like us on [Facebook](#) & Follow us on [Twitter](#)

