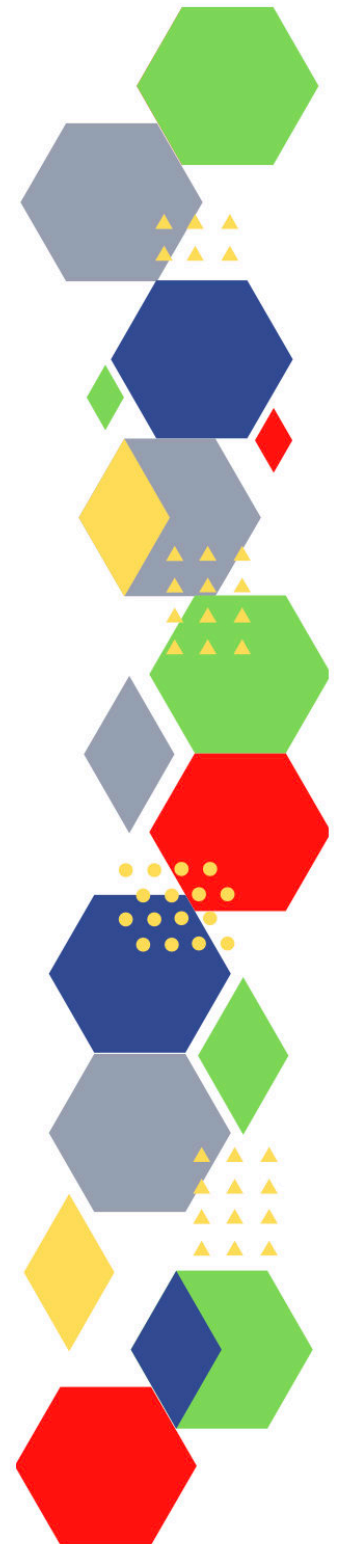
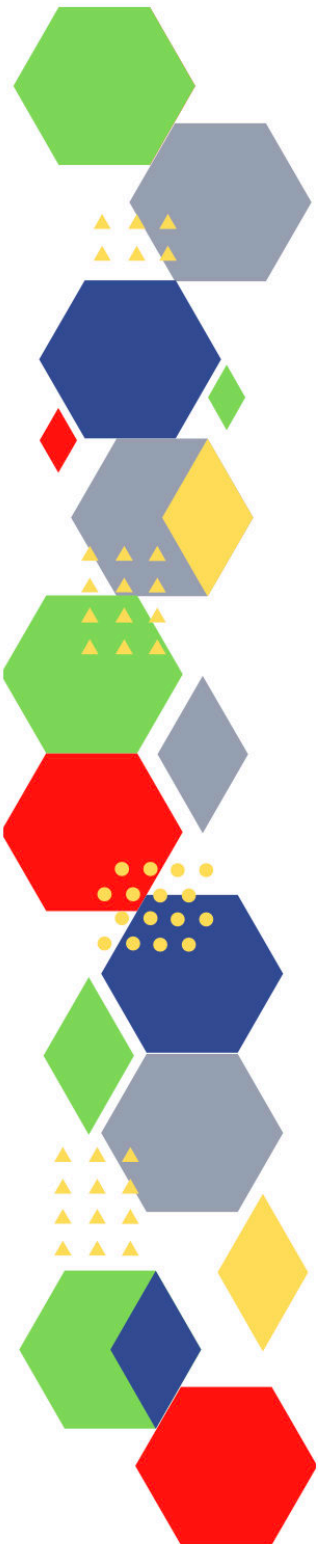




Future Proof Health Presents

Weekly News

4th August 2022



Communication	
Communication with Patients	
Communication within Teams	
Consent	<ul style="list-style-type: none"> • Gillick competency and Fraser guidelines • CONSENT POLICY • ReSPECT for healthcare professionals
People and Personal Development	
Personal / People Development / Leadership	<ul style="list-style-type: none"> • Accountability and delegation in practice • Report template (mcusercontent.com) • General Practice Improvement Leads Programme application 2022/23 (createsend1.com)
NHS Employers / HR / NHS Pension	<ul style="list-style-type: none"> • NHS Employers • Pensions Online • Experiences of Racial Discrimination and Harassment in London Primary Care • Technical guidance NHSBSA (createsend1.com)
Health, Safety & Security	
	<ul style="list-style-type: none"> • NPSA • Control of Substances Hazardous to Health (COSHH)
Gov UK - NHS	
CQC	<ul style="list-style-type: none"> • GP mythbusters • Examples of outstanding practice for GPs • CQC update for primary medical and dental services (govdelivery.com)
MIMS	<ul style="list-style-type: none"> • Prescribing Update • NICE: avoid antidepressants as first treatment for less-severe depression MIMS online (mkt6316.com)
Antibiotic steward-ship / Anti-microbial resistance	<ul style="list-style-type: none"> • Antimicrobial resistance surveillance pilot site selection and database extension - GOV.UK (www.gov.uk) • New treatments to tackle pandemic of drug-resistant infections - GOV.UK (www.gov.uk)
Drug / Device Alerts (MHRA)	
Emergency Situations	<ul style="list-style-type: none"> • The updated National Early Warning Score and its use with suspected Sepsis • Resuscitation Council UK

Vaccines / Medications / Prescribing	<ul style="list-style-type: none"> • Protocol for ordering, storing and handling vaccines • A Competency Framework for all Prescribers • Non-medical prescribing • The Human Medicines Regulations 2012 • RCN - Non-medical prescribers • Royal Pharmaceutical Society • Standards for prescribing • Clinical Negligence Scheme for General Practice • Home - electronic medicines compendium (emc)
Infection Control / Infection Statics	<ul style="list-style-type: none"> • COVID-19: would nurses feel safer if patients had to wear masks? (rcni.com) • NHS England » National infection prevention and control
Safe Guarding	<ul style="list-style-type: none"> • Female genital mutilation (FGM) • PREVENT • Child protection system in the UK • Safeguarding Adults • Safeguarding children: detailed information
Practice Policies	<ul style="list-style-type: none"> • Nursing Management RCNi • General Practice Improvement Leads Programme application 2022/23 (createsend1.com)
Audit	
Information Governance / Record Keeping	<ul style="list-style-type: none"> • Guide to Data Protection • Supporting general practice – Medical record keeping • The benefits About Me offers people accessing care (theprsb.org)
Quality & Service Improvement	
Quality, Service & Improvement	<ul style="list-style-type: none"> • The PRSB • General Practice Assessment Questionnaire (GPAQ) • Healthwatch • NHS Five Year Forward View • General Practice Forward View • NMC • Dr Jon Griffiths • NHS Confed • apply for the Primary Care – Quality Improvement Facilitation Development Programme (createsend1.com) • NHS England » Freedom to speak up

Roles in General Practice	<ul style="list-style-type: none"> • Standards for nursing associates • GP mythbuster 57: Health Care Assistants in General Practice • How NHS Knowledge and Library Services can support AHPs - YouTube (createsend1.com)
Revalidation	
Personal Practice & Development	
Practice Management	<ul style="list-style-type: none"> • Institute of General Practice Management • Practice Index
Employment	
NHS Self Care & Resilience	<ul style="list-style-type: none"> • Samaritans • Mental Health at work • Calm • Supporting our NHS people • The Hub :: Black Country Healthcare NHS Foundation Trust • Fronting up to the problems: what can be done to improve the wellbeing of NHS staff? The Nuffield Trust • NHS England » Support for our diverse colleagues (createsend1.com)
Practice Transformation / Innovation Agency	<ul style="list-style-type: none"> • Who can issue fit notes: guidance for healthcare professionals and their employers - GOV.UK (createsend1.com) • Over 16 million repeat prescriptions ordered via NHS App in a year - NHS Digital • The Fit Note - elearning for healthcare (createsend1.com)
Future of NHS / General Practice / NHS Recovery	<ul style="list-style-type: none"> • First ever Patient Safety Commissioner appointed - GOV.UK (www.gov.uk) • Government recruitment having no 'meaningful impact' on nurse shortages, report finds - Nursing in Practice (cogora.com) • Improve flexible working to aid nurse retention, says Jeremy Hunt - Nursing in Practice (cogora.com) • NHS England » NHS Long Term Plan • Laying foundations (nuffieldtrust.org.uk)
ICS / ICB / ICP / PCN Commissioning	
QOF / PHOF / DES / LES / NHS Contract / CQRS / CQUIN	

Leadership / Innovation	<ul style="list-style-type: none"> • Leadership Academy • Developing a new framework for delegated healthcare interventions - Social care (blog.gov.uk) • Leadership for Personalised Care Leadership Framework Programmes for leaders in healthcare, social care and beyond (createsend1.com) • General Practice Improvement Leads Programme application 2022/23 (createsend1.com)
Greener NHS	<ul style="list-style-type: none"> • Roundtable discussion: 'The climate emergency is a health emergency' Local Government Chronicle (LGC) (lgcplus.com)
Personalised Care	
Personalised Care / Self Care / Social Prescribing / Health Coaching	<ul style="list-style-type: none"> • Self Care forum • Personalised Care Institute • Personalised care • Social Prescribing Academy • NHS England » Support for our diverse colleagues (createsend1.com) • Leadership for Personalised Care Leadership Framework Programmes for leaders in healthcare, social care and beyond (createsend1.com)
Group consultation	
Working Differently	<ul style="list-style-type: none"> • PROVIDERS IN PLACE-BASED PARTNERSHIPS Case studies of local collaboration • Offering patients access to their future health information - NHS Digital
Shared Decision Making	<ul style="list-style-type: none"> • NHS England » Choice • NHS England » The Healthcare Inequalities Improvement Dashboard • NHS England » Decision support tools (createsend1.com) • NHS England » Shared decision making (createsend1.com) • NICE standards framework for shared decision making support tools, including patient decision aids (createsend1.com) • NHS England » Decision support tools: making a decision about a health condition
Equality & Diversity	
Equality & Diversity	<ul style="list-style-type: none"> • Public Health Profiles • NHS England » Support for our diverse colleagues (createsend1.com)
Inclusion Health	<ul style="list-style-type: none"> • Health Creation Academic Network

Poverty / Homelessness	<ul style="list-style-type: none"> • Crisis • This is Poverty
Population Health / Health Communities	
Thrive Into Work	<ul style="list-style-type: none"> • Thrive into Work • Thrive into Work Referral form
Health Inequalities	<ul style="list-style-type: none"> • NHS News • NHS England » Tackling inequalities in healthcare access, experience, and outcomes • NHS England » The Healthcare Inequalities Improvement Dashboard • NHS England » National Healthcare Inequalities Improvement Programme • NHS England » What are healthcare inequalities? • English indices of deprivation 2019 - GOV.UK (www.gov.uk) • What are health inequalities • Our approach to reducing healthcare inequalities • Data and insight • Guidance and support • Core 20PLUS5
Trans / Non-binary Health / LGBTQ+	<ul style="list-style-type: none"> • LGBT Foundation • NHS population screening: information for trans and non-binary people • Cervical screening for trans men and/or non-binary people • Home - Pride House Birmingham (pridehousebham.org.uk)
Migrant / Refugee Health	<ul style="list-style-type: none"> • THE REFUGEE & MIGRANT CENTRE • Ideas that change health and care The King's Fund (kingsfund.org.uk)
Traveller / Gypsy / Romany Health	
Veterans Health	<ul style="list-style-type: none"> • The first call for help takes courage
Management of Emergency Situations	
Management of Emergency Situations	<ul style="list-style-type: none"> • The updated National Early Warning Score and its use with suspected Sepsis • Practice Nursing - Acute onset low back pain leading to a diagnosis of cauda equina syndrome: a case study • Practice Nursing - Anaphylaxis: how to recognise and manage in primary care

<i>Continuation of Management of Emergency Situations</i>	
111	<ul style="list-style-type: none"> • NHS England » Why think Same Day Emergency Care? One-page guides for ambulance and NHS 111 clinicians
First Contact	<ul style="list-style-type: none"> • Supporting general practice – Common pitfalls • Paediatrics for Primary Care (and anyone else) (gppaedstips.blogspot.com) • Posters for Chronic Live Failure & Varella zoster virus and facial palsy
Red Flags	
Sepsis	<ul style="list-style-type: none"> • Sepsis: recognition, diagnosis and early management • Sepsis guidance implementation advice for adults • Sepsis in Children • Sepsis Trust • RCGP: Sepsis • quick SEPSIS RELATED ORGAN FAILURE ASSESSMENT • NMC OSCE NEWS CHARTS / NEWS 2 / National Early Warning Scoring System Explained / How to Chart OSCE - YouTube
Therapeutic Monitoring	
OSCE	<ul style="list-style-type: none"> • Geeky Medics • Abdominal Examination - Demonstration - YouTube • Cardiovascular Examination - Demonstration - YouTube • Respiratory Examination - Demonstration - YouTube • Physical Diagnosis Skills - University of Washington School of Medicine • Practice Nursing - Assessment and examination of the respiratory system
Role Specific	
Cervical Cytology	<ul style="list-style-type: none"> • Guide to the interim assessment • British Association for Cytopathology • Lab Tests Online • Female Genital Mutilation, Jan 2022 - March 2022 - GOV.UK (www.gov.uk) • Practice Nursing - Understanding HPV and cervical screening

<i>Continuation of Role Specific</i>	
Ear Care	<ul style="list-style-type: none"> • Ear Care Centre • RNID
Wound Management	<ul style="list-style-type: none"> • Microworld • Tissue Viability Society • The BLS • Wounds on Thursdays • Wound Expo 2022 - Registration now open (mahealthcarevents.co.uk)
Minor Surgery	
Obtaining Samples / Results	<ul style="list-style-type: none"> • Lab Tests Online
Health Promotion / Health Screening	
Health Promotion / Population Health	<ul style="list-style-type: none"> • Better Health • EXi App • Apps - Lets Get (lets-get.com) • NHS England » The Population Health Management approach in ICSs pays homage to work of Florence Nightingale (createsend1.com) • Improving Population Health on the front line – a Healthy Hearts group intervention - YouTube (createsend1.com)
Health Screening	<ul style="list-style-type: none"> • PHE Screening
PHE / OHID / UKHSA	<ul style="list-style-type: none"> • Knowledge & Library Services • Campaign Resources • Public Health Profiles • Health Publications • Health Profile for England 2021 • English indices of deprivation 2019 • Personalising public health (independentnurse.co.uk)

Continuation of Health Promotion / Health Screening

NHS Health Check	<ul style="list-style-type: none"> • NHS Health Check
NOIDS / PHE Surveillance / Syndromic Surveillance	<ul style="list-style-type: none"> • Statistics on TB in Non-Bovine Species - GOV.UK (www.gov.uk) • Notifiable diseases: causative agents reports for 2022 - GOV.UK (www.gov.uk) • Avian influenza in wild birds (www.gov.uk) • Deaths registered weekly in England and Wales, provisional: week ending 8 July 2022 - GOV.UK (www.gov.uk) • Avian influenza in UK seal populations: HAIRS risk assessment - GOV.UK (www.gov.uk) • Notifiable diseases: weekly reports for 2022 (www.gov.uk) • Notifiable diseases: last 52 weeks - GOV.UK (www.gov.uk) • GP out-of-hours syndromic surveillance: weekly bulletins for 2022 - GOV.UK (www.gov.uk) • Weekly all-cause mortality surveillance: 2022 to 2023 - GOV.UK (www.gov.uk) • National flu and COVID-19 surveillance reports: 2022 to 2023 season - GOV.UK (www.gov.uk) • National ambulance syndromic surveillance: weekly bulletins 2022 - GOV.UK (www.gov.uk) • GP in hours: weekly bulletins for 2022 - GOV.UK (www.gov.uk) • Emergency department: weekly bulletins for 2022 - GOV.UK (www.gov.uk) • Syndromic surveillance: weekly summaries for 2022 - GOV.UK (www.gov.uk) • Remote health advice: weekly bulletins for 2022 (www.gov.uk) • Avian influenza (bird flu) in Europe, Russia and the UK - GOV.UK (www.gov.uk)
Addiction/Smoking	<ul style="list-style-type: none"> • Drink Coach • Stop smoking interventions and services

Immunisation / Travel Health

- [Vaccinations and infections](#)
- [Joint Committee on Vaccination and Immunisation](#)
- [Immunisation against infectious disease](#)
- [West Midlands Immunisation Service](#)
- [Immunisation information for Health Care Services within the West Midlands area](#)
- [Vaccination of individuals with uncertain or incomplete immunisation status](#)
- [WHO vaccine-preventable diseases: monitoring system. 2020 global summary](#)
- [The Foundations of Immunization: What, Who, When and Why?](#)
- [Winter Vaccination - Prime phase: Social Media content calendar and assets - 2021](#)
- [Measles outbreak training](#)
- [Vaccine Safety Basics](#)
- [15-valent pneumococcal conjugate vaccine launched | MIMS online \(mkt6316.com\)](#)

Flu

- [Flu and flu vaccinations](#)
- [The national influenza immunisation programme 2021 to 2022](#)
- [Flu vaccines for the 2021 to 2022 season poster](#)
- [Appendix C: Flu vaccinator competency assessment tool](#)
- [Healthcare assistants and flu vaccinations](#)
- [Flu Campaign Resources 2021/22](#)
- [National flu and COVID-19 surveillance reports published](#)
- [UKHSA flu immunisation 2022–2023 guideline | PHE/DH/DWP guideline | Guidelines](#)
- [National flu immunisation programme plan 2022 to 2023 - GOV.UK \(www.gov.uk\)](#)
- [NHS England » Reimbursable vaccines and eligible cohorts for the 2022/23 NHS Seasonal Influenza \(flu\) Vaccination Programme \(createsend1.com\)](#)

<i>Continuation of Immunisation / Travel Health</i>	
Covid Vaccine	<ul style="list-style-type: none"> • Greenbook COVID-19 chapter 14a • Updates made to the COVID-19 vaccination elearning programme • HEE e-LfH COVID-19 vaccination programme launches hit 2 million • COVID-19 Vaccine Moderna e-learning now available • GP COVID-19 vaccine dashboard • Coronavirus (COVID-19) vaccines adverse reactions • Coronavirus and vaccination rates in people aged 18 years and over by socio-demographic characteristic and region, England: 10 June 2022 - GOV.UK (www.gov.uk) • JCVI updated statement on the COVID-19 vaccination programme for autumn 2022 - GOV.UK (www.gov.uk) • NHS England » COVID-19 autumn booster and flu vaccine programme expansion
Children	<ul style="list-style-type: none"> • Child immunisation suffers largest drop in generation - Nursing in Practice (cogora.com)
Adults	<ul style="list-style-type: none"> • Immunisation patient group direction (PGD) templates • Shingles immunisation programme: introduction of Shingrix® letter
Vaccine Update	<ul style="list-style-type: none"> • Vaccine update: Issue 325, April 2022 (publishing.service.gov.uk)
PGD	
Travel Health	<ul style="list-style-type: none"> • Travel Health Pro • Fit for Travel • Travel Health • Jane Chiodini • Corona.Help • GP mythbuster 107: Pre-travel health services - Care Quality Commission (cqc.org.uk) • Competencies: travel health nursing: career and competence development • Good Practice Guidance for Providing a Travel Health Service (rcn.org.uk)

Mental Health / Learning Disability / Disability

<p>Mental Health</p>	<ul style="list-style-type: none"> • Mental Health • Mental Health UK • Mind • Place2b • Rethink Mental Illness • Young Minds • Every Mind Matters • Calm • Headspace • We Can Talk • Get Your Mind Plan • Feeling low? • Better Health - Every Mind Matters - Resources • ZSA Training • Psychiatry - Medscape • Mental Health Practice RCNi • More support needed for people with mental health difficulties at work (rcpsych.ac.uk) • Physical Health Care For Severe Mental Illness Maudsley Learning (createsend1.com) • NICE: avoid antidepressants as first treatment for less-severe depression MIMS online (mkt6316.com) • Antidepressants, a guide to switching and withdrawing MIMS online (mkt6316.com)
<p>Learning Disability</p>	<ul style="list-style-type: none"> • Learning Disabilities • Learning Disability England • Mencap • Bild • Autism • Learning from Lives and Deaths People with a Learning Disability and autistic people (LeDeR) (kcl.ac.uk) • Learning Disability Practice RCNi • Learning Disability Services Monthly Statistics, AT: June 2022, MHSDS: April 2022 Final - GOV.UK (www.gov.uk) • Government seeks views to improve lives of people with Down's syndrome - GOV.UK (www.gov.uk)
<p>Disability (Inc. hearing and visual)</p>	<ul style="list-style-type: none"> • Disability Rights UK • Disability Matters • RNID - National hearing loss charity • Disabled people's experiences with activities, goods and services in the UK - GOV.UK (www.gov.uk)

From Cradle to...

Infant Health	<ul style="list-style-type: none"> • Tommys • First Steps Nutrition Trust • Bliss • NHS App - Baby Buddy • NHS App - Peanut • ICON Toolkit
Child Health	<ul style="list-style-type: none"> • Unicef • Health Professional Academy • Premature Babies • Child and Maternal Health • Women and Child First • Child Health Information Services • Place2b • Childhood eczema • Childhood asthma • Paediatrics for Primary Care (and anyone else) (gppaedstips.blogspot.com) • Me first: Helping health and care professionals communicate more effectively with children and young people • Nursing Children and Young People RCNi • National Child Measurement Programme, England, Provisional 2021/22 School Year Outputs - GOV.UK (www.gov.uk) • Decrease in obesity among primary-aged children in 2021/22, latest statistics show - NHS Digital • Why I became a children's nurse – and why I still love it (rcni.com) • Parents urged to help their kids get active over the summer holidays with the 10 Minute Shake Up - GOV.UK (www.gov.uk) • Common Nasal Conditions and Symptoms Free Online CPD Course Child Health Academy (healthprofessionalacademy.co.uk) • Overview Social, emotional and mental wellbeing in primary and secondary education Guidance NICE
Adolescent Health	<ul style="list-style-type: none"> • Adolescent Health Programme • Society for Adolescent Health and Medicine • Young Minds

<p>Mens Health</p>	<ul style="list-style-type: none"> • Mens Health Forum • Mens Health Month • Mens health.org • Mens Health UK • Men and mental health • Men's Mental Health Awareness • Prostate Cancer UK • Orchid Fighting Male Cancer • Prostate Cancer UK Facebook Page • Men's Voices Event • Movember
<p>Women's Health</p>	<ul style="list-style-type: none"> • Womens Health Concern • Well Being of Women • Coppa Feel • Menopause Matters • The Menopause Charity • Royal College of Obstetricians and Gynaecologists - Guidelines • Pelvic Partnership • CRUK - Womens Cancer • Breast Cancer Now • Foundation for Women's Cancer • Eve Appeal • Ovarian.Org • Jo's Trust • Well Spring • NHS breast screening programme has low risk of overdiagnosis - Nursing in Practice (cogora.com) • CPD module: Intrauterine contraception – what practice nurses need to know (cogora.com) • First Women's Health Strategy for England to tackle gender health gap - GOV.UK (www.gov.uk) • Screening and identifying sarcopenia in primary care (independentnurse.co.uk) • Health Strategy: Call for Evidence - GOV.UK (www.gov.uk) • Our Vision for the Women's Health Strategy for England - GOV.UK (www.gov.uk) • Vaginal HRT to be available over the counter MIMS online (mkt6316.com) • NICE approves breast cancer drug as first women's health strategy launched MIMS online (mkt6316.com) • Endometriosis: what the practice nurse needs to know (independentnurse.co.uk)

The Older Population	<ul style="list-style-type: none"> • BGS • Ageing Better • Delirium Champions - YouTube • Screening and identifying sarcopenia in primary care (independentnurse.co.uk) • Nursing Older People RCNi
Carers / Social Care / Care Homes	<ul style="list-style-type: none"> • The Care Provider Alliance • Skills for Care • The Care Workers' Charity • Supporting Adult Carers • Adult Social Care Update • Evidence on costs associated with NHS-funded nursing care: 2021 to 2022 - GOV.UK (www.gov.uk) • Leeds Health and Social Care Hub launches to improve outcomes across the region - GOV.UK (www.gov.uk) • How is evidence and NICE guidance relevant to social work? NICE social work series Part 1/4 - YouTube
Young Carers	
Complex Needs	
Family Planning & Sexual Health	
Family Planning	<ul style="list-style-type: none"> • Faculty of Sexual and Reproductive Healthcare Education and Training • CPD module: Intrauterine contraception – what practice nurses need to know (cogora.com) • Contraceptives, oral and transdermal preparations MIMS online (mkt6316.com)
Reproductive	<ul style="list-style-type: none"> • Tommys
Sexual Health / Sexual Abuse	<ul style="list-style-type: none"> • Sexual and Reproductive Health Profiles • FSRH Education & Training
Maternity / Neonate health	<ul style="list-style-type: none"> • Maternity Disparities Taskforce: terms of reference - GOV.UK (www.gov.uk) • Perinatal-FINAL.pdf (ncmd.info)

Care of Patients with Long Term Conditions	
LTC	<ul style="list-style-type: none"> • Physical Activity for the Prevention and Management of Long-Term Conditions • New UCLPartners search tools for EMIS and SystmOne highlighted in national primary care pandemic recovery guidance - UCLPartners • Search and risk stratification tools - UCLPartners
Diabetes & Pre-Diabetes	<ul style="list-style-type: none"> • AZ Medical and Educational Goods and Services in Diabetes • Mumoactive • The mySugr App • CPD: Gaining back control of type 2 diabetes post-pandemic - Nursing in Practice (cogora.com) • Diabetes Medicines
Respiratory	<ul style="list-style-type: none"> • Spirometry: step by step • ARTP • British Lung Foundation • The Primary Care Respiratory Society • Monthly myth busting! (engagingnetworks.app) • Christmas Carol Service Asthma + Lung UK (engagingnetworks.app) • Sign up now! (engagingnetworks.app) • Support Groups + Singing for Lung Health Groups Asthma + Lung UK (engagingnetworks.app) • Monthly myth busting - Getting out of breath is good for your lungs! — Asthma + Lung UK Blog (asthmaandlung.org.uk) • GPnotebook focus on respiratory medicine (contains promotional information) (mailchi.mp)
COPD	<ul style="list-style-type: none"> • Right Breathe • GOLD COPD 2022 strategy Independent professional body guideline Guidelines
Asthma	<ul style="list-style-type: none"> • FeNO - Fractional exhaled nitric oxide - for the diagnosis and management of Asthma • Asthma UK • Asthma: diagnosis, monitoring and chronic asthma management • GINA 2021: the missing pieces in the childhood asthma puzzle • GINA: Interim Guidance About COVID-19 & Asthma

Continuation of Long Term Conditions

Hypertension	<ul style="list-style-type: none"> • British Heart Foundation • Blood Pressure UK • Hypertension in adults: diagnosis and management • Hypertension in adults: diagnosis and treatment • NICE hypertension guideline NICE guideline Guidelines • Hypertension: symptoms to look out for and treatment options (rcni.com)
CVD/AF	<ul style="list-style-type: none"> • QRISK®3-2018 risk calculator • Heart Rhythm Alliance • CVD risk assessment and management • AHA Journals • NHS lipid management pathway NHS guideline Guidelines • eLearning module: Identify, optimise treatment, refer—treating familial hypercholesterolaemia (FH) in primary care (contains promotional material) (mgp.co.uk)
Heart Failure	<ul style="list-style-type: none"> • British Heart Foundation • British Society Guidelines • Improving Population Health on the front line – a Healthy Hearts group intervention - YouTube (createsend1.com)
Cancer / Oncology	<ul style="list-style-type: none"> • Surviving Thyroid Cancer • Help Us Help You - Lung Cancer Symptoms • Becca Breast Cancer Support App • Breast Cancer Now • MoleCare App • Macmillian • Bowel Cancer UK • Cancer Nursing Practice RCNi • NICE approves breast cancer drug as first women's health strategy launched MIMS online (mkt6316.com)
Chronic Kidney Disease	<ul style="list-style-type: none"> • Kidney.Org • Kidney Quality Improvement Partnership
Liver Disease	<ul style="list-style-type: none"> • British Liver Trust • Liver Research • BRITISH ASSOCIATION FOR THE STUDY OF THE LIVER • LIVERnORTH • LIVER DISEASE AND CIRRHOSIS

Continuation of Long Term Conditions

Blood Disorders	<ul style="list-style-type: none"> • Blood Cancer • Thalassaemia • ITP • Haemophilia • UK MDS Forum • Save a life. Give plasma. • Diagnosis and management of pernicious anaemia • Haemochromatosis UK • Sickle cell disease - NHS (www.nhs.uk) • No Ones Listening (sicklecellsociety.org) • How many people have sickle cell disease in the UK?
G.I	<ul style="list-style-type: none"> • GIST Cancer UK • Practice Nursing - Understanding constipation in adults • Understanding constipation in adults (mah-communications.co.uk) • NICE recommends potentially life-changing treatment for people with short bowel syndrome News and features News NICE
ENT	
G.U	
ME / CFS / Fibromyalgia	<ul style="list-style-type: none"> • ME Association • ME Research • Action for ME • FMA UK • Fibromyalgia UK • Home - Fibromyalgia Awareness UK (fibroawarenessuk.org)
Neurological Conditions	<ul style="list-style-type: none"> • The Brain Tumour Charity • Narcolepsy.Org • ACNR

Continuation of Long Term Conditions

<p>Musculoskeletal Conditions</p>	<ul style="list-style-type: none"> • Rheumatology • National Axial Spondyloarthritis Society • Musculoskeletal health • Musculoskeletal health: 5 year prevention strategic framework • Faculty of Occupational Medicine • Guide to embedding your first contact physiotherapy service
<p>Endocrine Disorders / Metabolic Disorders</p>	<ul style="list-style-type: none"> • Endocrinology • Turner Syndrome Support Society • Thyroid Eye Disease • British Thyroid Foundation • Thyroid UK • Pituitary • Addisons Disease • Parathyroid UK • The Royal Osteoporosis Society • Metabolic Support UK
<p>Frailty</p>	<ul style="list-style-type: none"> • Recognising frailty • Identifying frailty • CLINICAL FRAILTY SCALE • Preventing Falls in Older People - Inside Government
<p>Dementia / Alzheimers</p>	<ul style="list-style-type: none"> • Dementia UK • Understanding dementia • My House of Memories - NHS App • Dementia profile updates • Caring for Carers Dementia Support Group (Tuesdays) • Delirium Champions • Practice Nursing - Assessment of frailty in Alzheimer's: a literature review • Alzheimers • How can person-centred strategies improve dementia care? (rcni.com)
<p>Allergy / Auto-immune / Genetic Conditions</p>	<ul style="list-style-type: none"> • Allergy UK • Rheumatology • Addisons Disease • eLearning module: Identify, optimise treatment, refer—treating familial hypercholesterolaemia (FH) in primary care (contains promotional material) (mgp.co.uk)

Continuation of Long Term Conditions

Obesity	<ul style="list-style-type: none"> • Obesity UK
Pain Management	<ul style="list-style-type: none"> • Pain Concern • UK career framework for pain nurses • Post-herpetic neuralgia: The painful aftermath of shingles (independentnurse.co.uk)
Genomics	
Dermatology	<ul style="list-style-type: none"> • British Association of Dermatologists • Eczema • The British Skin Foundation • Acne vulgaris: management • The Primary Care Dermatology Society • Acne.org • Allergy UK • Urticaria • Hives • Sunburn • Causes of cancer and reducing your risk • What is Rosacea? • Rosecea • Herpes.org • Shingles • Fungal Skin Infection - Foot • The Psoriasis Association • Psoriasis • Melanoma • Skin Health Information • British Association of Plastic Reconstructive and Aesthetic Surgeons • Warts and verrucae • Updates in dermatology from GPnotebook (contains promotional information) (mailchi.mp) • Post-herpetic neuralgia: The painful aftermath of shingles (independentnurse.co.uk)

<i>Continuation of Long Term Conditions</i>	
Multi-Morbidity	<ul style="list-style-type: none"> • Multimorbidity • Multimorbidity / multiple long-term conditions (MLTC)
Minor Illness / First Contact Assessment / OSCE	<ul style="list-style-type: none"> • Fact Sheets - Self Care Forum • Understanding constipation in adults (mah-communications.co.uk) • Nasal Conditions and Symptoms Free Online CPD Course Child Health Academy (healthprofessionalacademy.co.uk) • New on demand webinar: Best practice: Management of mental health in patients with acne (contains promotional content) (mgt.co.uk) • Dry eye treatments MIMS online (mkt6316.com) • Hayfever treatments (mkt6316.com) • Topical steroids, potential skin sensitisers as ingredients (mkt6316.com) • Topical steroids, comparison of potencies and formulations (mkt6316.com) • Post-herpetic neuralgia: The painful aftermath of shingles (independentnurse.co.uk) • Shingles & clinical examination of the cardiovascular system flyers
Other / Case Studies	<ul style="list-style-type: none"> • Ultra Rare Disease Disorders And Disabilities Foundation • MyCognition Home - NHS App • Heatwave: how to cope in hot weather - NHS (www.nhs.uk)
End of Life Care	
End of Life Care	<ul style="list-style-type: none"> • ReSPECT for healthcare professionals • Hospice UK • NHS England » Palliative and end of life care: Statutory guidance for integrated care boards (ICBs)
Covid-19 / Monkeypox	
Covid-19	<ul style="list-style-type: none"> • Covid Live • Self-reported long COVID after infection with the Omicron variant in the UK: 18 July 2022 - GOV.UK (www.gov.uk) • Coronavirus (COVID-19) Infection Survey, UK: characteristics of people testing positive for COVID-19, 20 July 2022 - GOV.UK (www.gov.uk) • International travel: public attitudes during COVID-19 - GOV.UK (www.gov.uk) • COVID-19 Health Inequalities Monitoring in England tool (CHIME) - GOV.UK (www.gov.uk) • Number of COVID-19 tests in defence and positive cases in the UK Armed Forces 2022 - GOV.UK (www.gov.uk) • National flu and COVID-19 surveillance reports: 2022 to 2023 season (www.gov.uk) • Consensus statements and medium-term projections on COVID-19 - GOV.UK (www.gov.uk)

<i>Continuation of Covid-19 / Monkeypox</i>	
Long Covid	<ul style="list-style-type: none"> • Supporting your recovery after COVID-19 • Long Covid Toolkit • Long term effects of COVID (Long COVID) • Post-COVID Syndrome (Long COVID) • COVID-19 Yorkshire Rehabilitation Screening Tool • FOM Guidance • Lung health care after COVID-19 • COVID-19 Rehabilitation Programme Nuffield Health • long covid - General Practice Notebook (gpnotebook.com)
Monkeypox	<ul style="list-style-type: none"> • Monkeypox outbreak: technical briefings - GOV.UK (www.gov.uk) • Monkeypox outbreak: epidemiological overview - GOV.UK (www.gov.uk) • Accelerated monkeypox vaccination rollout in London announced (independentnurse.co.uk)
News & Views	
PSNC News / Pharmacy	<ul style="list-style-type: none"> • National Pharmacy Association • Royal Pharmaceutical Society • Medicines Learning Portal • Specialist Pharmacy Service • Home - electronic medicines compendium (emc) • PSNC Newsletter: 22nd July (mailchi.mp) • PSNC Newsletter: 25th July (mailchi.mp) • July 2022 Price Concessions 3rd Update (mailchi.mp) • July 2022 Price Concessions 2nd Update (mailchi.mp) • MIMS Learning • Over 16 million repeat prescriptions ordered via NHS App in a year - NHS Digital
Pulse / GP Online / HSJ / NB Medical	<ul style="list-style-type: none"> • GP Online • HSJ • Pulse Today
Primary Care Update / PCC / PPP	<ul style="list-style-type: none"> • Public Policy Projects News • Primary Care Bulletin

Continuation of News & Views

Digital News / Remote Consultations

- [Digital Health News Webinars](#)
- [Digital Health News](#)
- [NHS Digital](#)
- [Public Sector Events, Conferences and Training - Inside Government](#)
- [Digital Health Digest - 22 July 2022 \(mailchi.mp\)](#)
- [\[Webinar\] Effective digital access for improved patient/staff experience \(mailchi.mp\)](#)
- [Participate in our final Special Reports of 2022 \(campaign-archive.com\)](#)
- [Speak at Rewired 2023 \(mailchi.mp\)](#)
- [Government appoints new chief digital officer \(UK Authority, 12 July 2022\)](#)
- [UK: Experts welcome England's \\$2.3B plan for digital health and social care \(Healthcare IT News, 13 July 2022\)](#)
- [Phillips Ives Review will help the nursing profession to 'think collectively' \(Digital Health, 15 July 2022\)](#)
- [Firearms alert system paused days after launch over accuracy concerns \(Pulse, 19 July 2022\)](#)
- [NHS app reaches new milestone \(PharmaTimes, 20 July 2022\)](#)
- [NHS Digital to trial wireless technologies for better health care \(Digital Health, 20 July 2022\)](#)
- [UK and US launch innovation prize challenges in privacy-enhancing technologies to tackle financial crime and public health emergencies \(Department of Health and Social Care, 20 July 2022\)](#)
- [Over 16 million repeat prescriptions ordered via NHS App in a year \(NHS Digital, 20 July 2022\)](#)
- [Ransomware attacks threaten the NHS \(Open Access Government, 22 July 2022\)](#)
- [Lack of IT guidance on data opt-out despite end-of-month deadline \(Management in Practice, 25 July 2022\)](#)
- [Women's health apps accused of sharing sensitive personal data \(The Times \(£\), 25 July 2022\)](#)
- [Over 16 million repeat prescriptions ordered via NHS App in a year - NHS Digital](#)

<i>Continuation of News & Views</i>	
Health Care Leaders Newsletters	
Kings Fund	<ul style="list-style-type: none"> • The Kings Fund • Ideas that change health and care The King's Fund (kingsfund.org.uk)
World Health Organisation	<ul style="list-style-type: none"> • WHO • OpenWHO
IHCT / CCG / STP / Healthier Futures	<ul style="list-style-type: none"> • Healthier Futures • Black Country & West Birmingham CCG • Dudley Integrated Health and Care • Dudley CCG • Home :: Black Country Healthcare NHS Foundation Trust
NHSI / NHSE	
University / Student Nurses	
Medisa / Univadis / Geeky Medics / GP Notebook / Medscape	<ul style="list-style-type: none"> • Univadis Newsletter • Univadis Nurses Headlines • Medisa • Geeky Medics • Medscape Nurses • GP Notebook
Nurse Guidelines	<ul style="list-style-type: none"> • Guidelines for Nurses - summaries and resources to support best practice
The Health Foundation	<ul style="list-style-type: none"> • The Health Foundation
Practice Index	
The Health Care Leaders Update	<ul style="list-style-type: none"> • Health Care Leader News
Innovation Agency	<ul style="list-style-type: none"> • Innovation Agency Exchange • June 2022 newsletter (campaign-archive.com)

<i>Continuation News & Views</i>	
RCN	<ul style="list-style-type: none"> • RCN • Primary Health Care RCNi • Nurses in Northern Ireland now able to sign off patient fit notes (rcni.com) • Patients at risk of suicide: how to talk openly and offer support (rcni.com) • COVID-19: autumn booster confirmed for front-line health staff (rcni.com) • Pharmacological management of chronic heart failure (rcni.com) • Supporting your health and well-being: tips for nursing students (rcni.com) • Becoming a chief nurse: what I've learned in the first year (rcni.com) • Read about climate change and sustainability in healthcare (rcni.com) • climate change and sustainability in healthcare RCNi • COVID-19 (coronavirus) Nursing standard (rcni.com) • RCN to ballot members in Wales on industrial action - Nursing in Practice • Turnout 'essential' for industrial action ballot, says RCN - Nursing in Practice (cogora.com) • 12-month suspension for nurse who defrauded NHS over shifts (rcni.com) • Salary sacrifice purchases: things to consider before signing up (rcni.com) • Nurse shortages contributing to greatest ever workforce crisis (rcni.com)
Nursing in Practice / Nursing Standard / Independent Nurse	<ul style="list-style-type: none"> • Nursing Times • Independent Nurse Magazine • Practice Nursing • Practice Nursing Bulletin • GPN Bulletin • Nursing in Practice - Bulletin • Understanding constipation in adults (mah-communications.co.uk)
QNI	<ul style="list-style-type: none"> • QNI • Talk To Us © – The Queen's Nursing Institute (qni.org.uk) • QNI Educational Grants now open (mailchi.mp) • Queen's Nurse update July 2022 (mailchi.mp)

NMC	<ul style="list-style-type: none"> • NMC • New post-registration standards published; consultation on education standards (news-nmc.org.uk)
CMO / CNO	
WHO	<ul style="list-style-type: none"> • WHO
Nice	<ul style="list-style-type: none"> • NICE • NICE News for Health and Social Care July 2022 (mailchi.mp) • Depression in adults Submit your comments by Tuesday 2 August 2022. • Alcohol-use disorders Submit your comments by Tuesday 2 August 2022. • Thyroid cancer: assessment and management Submit your comments by Thursday 4 August 2022. • Diabetes in pregnancy Submit your comments by Tuesday 9 August 2022. • Tobacco: treating dependence Submit your comments by Friday 12 August 2022. • Velmanase alfa for treating alpha-mannosidosis Submit your comments by Tuesday 16 August 2022. • Chronic heart failure in adults Submit your comments by Friday 19 August 2022.
RCGP / BMA / The Lancet	<ul style="list-style-type: none"> • The Lancet • British Medical Journal • Royal College of General Practitioners
Midlands Academic Health Science Network	<ul style="list-style-type: none"> • WMAHSN Network
Healthwatch	<ul style="list-style-type: none"> • Healthwatch
Other	<ul style="list-style-type: none"> • Patients Association

Free Training / Webinars / Meetings / CPD

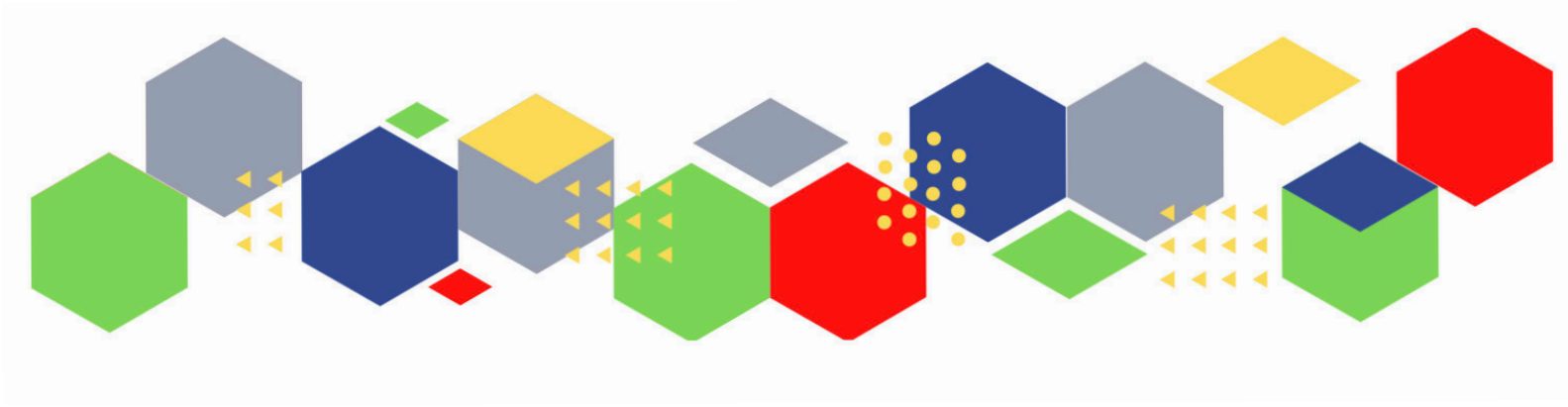
<p>Development / Information and Knowledge</p>	<ul style="list-style-type: none"> • FutureProof Health Training & Events • Red Whale Training • LATEST WEBINARS FROM ISSUES & ANSWERS • Nursing Events • Welcome to the Guidelines Live Conference newsletter—July issue (mgp.co.uk) • 🖱️ Exclusive discount for Study Group attendees! (mailchi.mp) • MIMS Learning • CPD module: Intrauterine contraception – what practice nurses need to know (cogora.com) • 3 August, 1.30pm - 3pm. QOF Quality Improvement (QI) Webinar Series • 4 August, 5pm - 6pm. General Practice Webinar • 10 August, 2pm - 3pm. How to effectively engage online with marginalised communities • 11 August, 12pm - 1pm. Safeguarding awareness session: Getting ready for patients to have access to their future data • 17 August, 11am - 12pm. An introduction to working with people and communities • Best Practice Show 2022 announces leading conference programme • New on demand webinar: Best practice: Management of mental health in patients with acne (contains promotional content) (mgp.co.uk) • LIVE EXPERT WEBINAR • Wound Expo 2022 - Registration now open (mahealthcareevents.co.uk) • PCN Study Day 2022 - Immunisation Nursing (mahealthcareevents.co.uk)
<p>Free to RCN</p>	<ul style="list-style-type: none"> • RCNi events RCNi • Online learning for nurses and student nurses RCNi Learning
<p>MIMMs Learning</p>	

Continuation of Free Training / Webinars / Meetings / CPD

Future Proof Health Training	
BCWB Training Hub	
Evidence based care	
Eventbrite	
e-Learning for Health	<ul style="list-style-type: none"> • New elearning session highlights dermatological side effects of COVID-19 • New COVID-19 community contact tracing programme now available • Staff Recovery Resources for critical care and the wider health workforce recovering from the COVID-19 pandemic • MindEd infographic highlights programme's success during COVID-19 • Long COVID elearning session available • The Changing Story of Cancer programme • Updates to the Flu Immunisation elearning programme for the 2021/22 flu season • Flu Immunisation programme - elearning • Foundation elearning programme update September 2021 • Virtual wards enabled by technology - elearning for healthcare (e-lfh.org.uk) • The Fit Note - elearning for healthcare (createsend1.com) • Eating disorders training for health and care staff - elearning for healthcare (createsend1.com)
YouTube	<ul style="list-style-type: none"> • NHS England • Black Country Healthcare - YouTube
Blogs/Vlogs	
Area Bulletins	

Continuation of Free Training / Webinars / Meetings / CPD

Podcasts	<ul style="list-style-type: none"> • The Nursing Handover Podcast • Nursing Standard Podcasts • What Makes a Nurse? • The MedicsPro Podcast • Nursing Matters • Welcome to the BJN Podcast • Why we care • EBN podcast • This Is Nursing • Maroon Mindset • Teach me, I'm a Nurse • Past Caring • RCGP eLearning podcast • The BMJ Podcast • Primary Care Network podcasts • The Professional Support Unit's Pandemic Podcast • How can public health nurses help deliver the Healthy Child Programme this winter? • Talking GP • Podcast – Matthew Winn – ICS Incoming.... Primary Care and Community Trusts • NB Hot Topics Podcast • Podcast: Will the rising cost of living be paid for by our health? (healthfdn.org.uk) • Lovegrove on Health - Podcast episode #4 - Skills for Health • Latest podcast episodes from GPnotebook (mailchi.mp) • The Next GenCast on Apple Podcasts • Supporting refugee and migrant health care in England The King's Fund (kingsfund.org.uk)
Research	<ul style="list-style-type: none"> • Science Daily • Multimorbidity / multiple long-term conditions (MLTC) • Results of Research Excellence Framework are published – UKRI • Research England £8 billion investment in England's universities – UKRI • Nurse Researcher RCNi
Freebies	<ul style="list-style-type: none"> • Blue Light Card
Other	



Thank you for reading Future Proof Health's weekly news!

If you missed past issues, please click [here](#) to view them

More information can be found on our website, [here](#)

Don't forget to like us on [Facebook](#) & Follow us on [Twitter](#)

