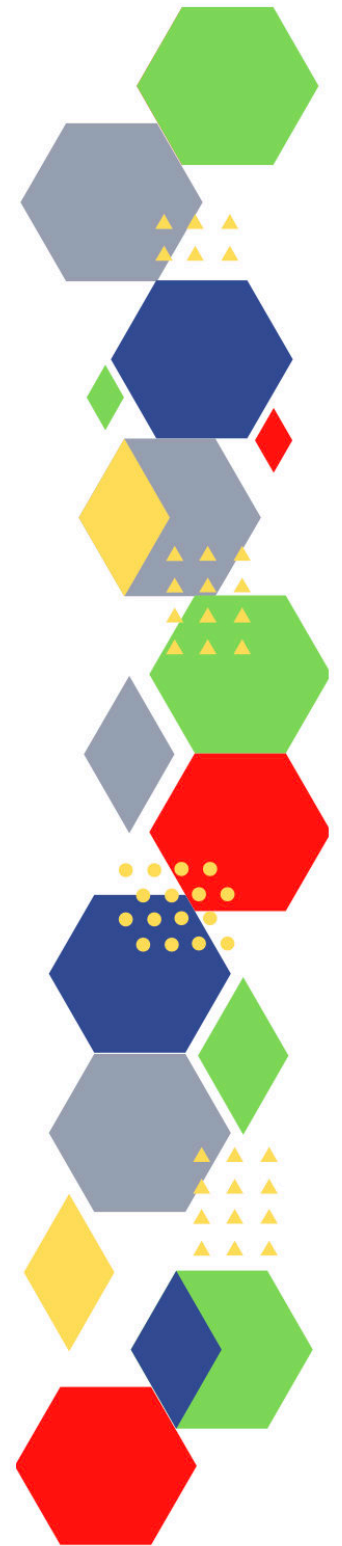




Future Proof Health Presents

Weekly News

5th May 2022



Communication	
Communication with Patients	
Communication within Teams	
Consent	<ul style="list-style-type: none"> <li>• <a href="#">Gillick competency and Fraser guidelines</a></li> <li>• <a href="#">CONSENT POLICY</a></li> <li>• <a href="#">ReSPECT for healthcare professionals</a></li> </ul>
People and Personal Development	
Personal / People Development / Leadership	<ul style="list-style-type: none"> <li>• <a href="#">Accountability and delegation in practice</a></li> </ul>
NHS Employers / HR / NHS Pension	<ul style="list-style-type: none"> <li>• <a href="#">NHS Employers</a></li> <li>• <a href="#">Pensions Online</a></li> <li>• <a href="#">Warning issued after nurse loses £45,000 in pension fraud (rcni.com)</a></li> </ul>
Health, Safety & Security	
<ul style="list-style-type: none"> <li>• <a href="#">NPSA</a></li> <li>• <a href="#">Control of Substances Hazardous to Health (COSHH)</a></li> <li>• <a href="#">HSE Weekly Digest eBulletin</a></li> </ul>	
Gov UK - NHS	<ul style="list-style-type: none"> <li>• <a href="#">New Deputy Chief Medical Officer for England announced - GOV.UK (www.gov.uk)</a></li> </ul>
CQC	<ul style="list-style-type: none"> <li>• <a href="#">GP mythbusters</a></li> <li>• <a href="#">Examples of outstanding practice for GPs</a></li> <li>• <a href="#">News from the Care Quality Commission: April 2022 (govdelivery.com)</a></li> </ul>
MIMS	<ul style="list-style-type: none"> <li>• <a href="#">Prescribing Update</a></li> </ul>
Antibiotic steward-ship / Anti-microbial resistance	<ul style="list-style-type: none"> <li>• <a href="#">NICE reaches important milestone in the UK's efforts to tackle antimicrobial resistance.   News and features   News   NICE</a></li> </ul>
Drug / Device Alerts (MHRA)	
Emergency Situations	<ul style="list-style-type: none"> <li>• <a href="#">The updated National Early Warning Score and its use with suspected Sepsis</a></li> <li>• <a href="#">Resuscitation Council UK</a></li> </ul>

<p>Vaccines / Medications / Prescribing</p>	<ul style="list-style-type: none"> <li>• <a href="#">Protocol for ordering, storing and handling vaccines</a></li> <li>• <a href="#">A Competency Framework for all Prescribers</a></li> <li>• <a href="#">Non-medical prescribing</a></li> <li>• <a href="#">The Human Medicines Regulations 2012</a></li> <li>• <a href="#">RCN - Non-medical prescribers</a></li> <li>• <a href="#">Royal Pharmaceutical Society</a></li> <li>• <a href="#">Standards for prescribing</a></li> <li>• <a href="#">Clinical Negligence Scheme for General Practice</a></li> <li>• <a href="#">Nitrofurantoin-induced pulmonary fibrosis: a case report</a></li> <li>• <a href="#">Nitrofurantoin now contraindicated in most patients with an estimated glomerular filtration rate (eGFR) of less than 45 ml/min/1.73m<sup>2</sup></a></li> </ul>
<p>Infection Control / Infection Statics</p>	<p>A reminder that the Minister for Care Gillian Keegan has <a href="#">written</a> to care providers about new guidance now in effect, as of 4 April 2022:</p> <ul style="list-style-type: none"> <li>• <a href="#">Infection Prevention and Control in ASC settings</a></li> <li>• <a href="#">Infection Prevention and Control in ASC settings - COVID-19 Supplement</a></li> <li>• <a href="#">COVID-19 testing in adult social care</a></li> <li>• <a href="#">Infection Prevention Control Guidance – Communications Toolkit</a></li> </ul>
<p>Safe Guarding</p>	<ul style="list-style-type: none"> <li>• <a href="#">Female genital mutilation (FGM)</a></li> <li>• <a href="#">PREVENT</a></li> <li>• <a href="#">Child protection system in the UK</a></li> <li>• <a href="#">Safeguarding Adults</a></li> <li>• <a href="#">Safeguarding children: detailed information</a></li> <li>• <a href="#">WST Training Update - April 2022 (govdelivery.com) – WOLVERHAMPTON ONLY</a></li> </ul>
<p>Practice Policies</p>	
<p>Audit</p>	
<p>Information Governance / Record Keeping</p>	<ul style="list-style-type: none"> <li>• <a href="#">Guide to Data Protection</a></li> <li>• <a href="#">Supporting general practice – Medical record keeping</a></li> </ul>

Quality & Service Improvement

Quality, Service & Improvement	<ul style="list-style-type: none"> <li>• <a href="#">The PRSB</a></li> <li>• <a href="#">General Practice Assessment Questionnaire (GPAQ)</a></li> <li>• <a href="#">Healthwatch</a></li> <li>• <a href="#">NHS Five Year Forward View</a></li> <li>• <a href="#">General Practice Forward View</a></li> <li>• <a href="#">NMC</a></li> <li>• <a href="#">Dr Jon Griffiths</a></li> <li>• <a href="#">NHS Confed</a></li> </ul>
Roles in General Practice	<ul style="list-style-type: none"> <li>• <a href="#">Standards for nursing associates</a></li> <li>• <a href="#">GP mythbuster 57: Health Care Assistants in General Practice</a></li> </ul>
Revalidation	
Personal Practice & Development	
Practice Management	<ul style="list-style-type: none"> <li>• <a href="#">Institute of General Practice Management</a></li> <li>• <a href="#">Practice Index</a></li> </ul>
NHS Self Care & Resilience	<ul style="list-style-type: none"> <li>• <a href="#">Samaritans</a></li> <li>• <a href="#">Mental Health at work</a></li> <li>• <a href="#">Calm</a></li> <li>• <a href="#">Supporting our NHS people</a></li> <li>• <a href="#">The Hub :: Black Country Healthcare NHS Foundation Trust</a></li> <li>• <a href="#">NHS England » Looking after you: confidential coaching and support for the primary care workforce</a></li> </ul>
Practice Transformation	<ul style="list-style-type: none"> <li>• <a href="#">Tell your patients about the NHS App</a></li> <li>• <a href="#">NHS App guidance - NHS Digital</a></li> </ul>
Future of NHS / General Practice	<ul style="list-style-type: none"> <li>• <a href="#">Ambulance pressures taking a significant toll on staff, says UNISON</a></li> <li>• <a href="#">Provider collaboratives: explaining their role in system working   The King's Fund (kingsfund.org.uk)</a></li> </ul>

ICS / PCN	<ul style="list-style-type: none"> <li>• <a href="#">Supporting information for ICS leads Enablers for success: virtual wards including hospital at home</a></li> <li>• <a href="#">Working with provider collaboratives (kingsfundmail.org.uk)</a></li> <li>• <a href="#">NHS England » Supporting information for ICS leads: Enablers for success: virtual wards including hospital at home</a></li> </ul>
QOF / PHOF / DES / LES / NHS Contract / CQRS / CQUIN	
Leadership	<ul style="list-style-type: none"> <li>• <a href="#">Leadership Academy</a></li> </ul>
Personalised Care	
Personalised Care / Self Care / Social Prescribing / Health Coaching	<ul style="list-style-type: none"> <li>• <a href="#">Self Care forum</a></li> <li>• <a href="#">Personalised Care Institute</a></li> <li>• <a href="#">Personalised care</a></li> <li>• <a href="#">Social Prescribing Academy</a></li> <li>• <a href="#">Leadership for Personalised Care</a></li> </ul>
Group consultation	
Working Differently	<ul style="list-style-type: none"> <li>• <a href="#">Integration and innovation in action: provider collaboration   NHS Confederation</a></li> </ul>
Shared Decision Making	
Equality & Diversity	
Equality & Diversity	<ul style="list-style-type: none"> <li>• <a href="#">Public Health Profiles</a></li> </ul>
Inclusion Health	<ul style="list-style-type: none"> <li>• <a href="#">Health Creation Academic Network</a></li> </ul>
Poverty / Homelessness	<ul style="list-style-type: none"> <li>• <a href="#">Crisis</a></li> <li>• <a href="#">This is Poverty</a></li> </ul>

Population Health / Health Communities	
Thrive Into Work	<ul style="list-style-type: none"> <li>• <a href="#">Thrive into Work</a></li> <li>• <a href="#">Thrive into Work Referral form</a></li> </ul>
Health Inequalities	<ul style="list-style-type: none"> <li>• <a href="#">Growing gap in life expectancy between rich and poor areas - Nursing in Practice</a></li> </ul>
Trans / Non-binary Health / LGBTQ+	<ul style="list-style-type: none"> <li>• <a href="#">LGBT Foundation</a></li> <li>• <a href="#">NHS population screening: information for trans and non-binary people</a></li> <li>• <a href="#">Cervical screening for trans men and/or non-binary people</a></li> </ul>
Migrant / Refugee Health	<ul style="list-style-type: none"> <li>• <a href="#">THE REFUGEE &amp; MIGRANT CENTRE</a></li> </ul>
Traveller / Gypsy / Romany Health	
Veterans Health	<ul style="list-style-type: none"> <li>• <a href="#">The first call for help takes courage</a></li> </ul>
Management of Emergency Situations	
Management of Emergency Situations	<ul style="list-style-type: none"> <li>• <a href="#">The updated National Early Warning Score and its use with suspected Sepsis</a></li> </ul>
111	
First Contact	<ul style="list-style-type: none"> <li>• <a href="#">Supporting general practice – Common pitfalls</a></li> <li>• <a href="#">Paediatrics for Primary Care (and anyone else) (gppaedstips.blogspot.com)</a></li> <li>• <a href="#">Centor Score (Modified/McIsaac) for Strep Pharyngitis - MDCalc</a></li> <li>• <a href="#">CRB65 score in the assessment of community acquired pneumonia (CAP) - General Practice Notebook (gpnotebook.com)</a></li> </ul>
Red Flags	

Sepsis	<ul style="list-style-type: none"> <li>• <a href="#">Sepsis: recognition, diagnosis and early management</a></li> <li>• <a href="#">Sepsis guidance implementation advice for adults</a></li> <li>• <a href="#">Sepsis in Children</a></li> <li>• <a href="#">Sepsis Trust</a></li> <li>• <a href="#">RCGP: Sepsis</a></li> <li>• <a href="#">quick SEPSIS RELATED ORGAN FAILURE ASSESSMENT</a></li> </ul>
Therapeutic Monitoring	
OSCE	<ul style="list-style-type: none"> <li>• <a href="#">Geeky Medics</a></li> <li>• <a href="#">Abdominal Examination - Demonstration - YouTube</a></li> <li>• <a href="#">Cardiovascular Examination - Demonstration - YouTube</a></li> <li>• <a href="#">Respiratory Examination - Demonstration - YouTube</a></li> <li>• <a href="#">Physical Diagnosis Skills - University of Washington School of Medicine</a></li> </ul>
<b>Role Specific</b>	
Cervical Cytology	<ul style="list-style-type: none"> <li>• <a href="#">Guide to the interim assessment</a></li> <li>• <a href="#">British Association for Cytopathology</a></li> <li>• <a href="#">Lab Tests Online</a></li> </ul>
Ear Care	<ul style="list-style-type: none"> <li>• <a href="#">Ear Care Centre</a></li> <li>• <a href="#">RNID</a></li> </ul>
Wound Management	<ul style="list-style-type: none"> <li>• <a href="#">Microworld</a></li> <li>• <a href="#">Tissue Viability Society</a></li> <li>• <a href="#">The BLS</a></li> <li>• <a href="#">Wounds on Thursdays</a></li> <li>• <a href="#">Emollients, potential skin sensitisers as ingredients   MIMS online</a></li> <li>• <a href="#">Ten top tips for nurses on Lyme disease - Nursing in Practice</a></li> </ul>
Minor Surgery	
Obtaining Samples / Results	<ul style="list-style-type: none"> <li>• <a href="#">Lab Tests Online</a></li> </ul>

Health Promotion / Health Screening	
Health Promotion / Population Health	<ul style="list-style-type: none"> <li>• <a href="#">Better Health</a></li> <li>• <a href="#">EXi App</a></li> <li>• <a href="#">Diphtheria: public health control and management in England - GOV.UK (www.gov.uk)</a></li> </ul>
Health Screening	<ul style="list-style-type: none"> <li>• <a href="#">PHE Screening</a></li> </ul>
PHE/OHID	<ul style="list-style-type: none"> <li>• <a href="#">Knowledge &amp; Library Services</a></li> <li>• <a href="#">Campaign Resources</a></li> <li>• <a href="#">Public Health Profiles</a></li> <li>• <a href="#">Health Publications</a></li> <li>• <a href="#">Health Profile for England 2021</a></li> <li>• <a href="#">UKHSA'S weekly surveillance report: focusing on 'Pillar 1' data - UK Health Security Agency (blog.gov.uk)</a></li> <li>• <a href="#">What is Lyme disease, and why do we need to be tick aware? - UK Health Security Agency (blog.gov.uk)</a></li> <li>• <a href="#">What to do if you have symptoms of a respiratory infection including COVID-19, or a positive COVID-19 test - UK Health Security Agency (blog.gov.uk)</a></li> <li>• <a href="#">London's communities remain vulnerable to COVID-19 without full vaccine protection - UK Health Security Agency</a></li> <li>• <a href="#">How science can protect us from the health effects of climate change - UK Health Security Agency</a></li> <li>• <a href="#">Thunderstorm asthma and public health – looking back to move forward - UK Health Security Agency</a></li> <li>• <a href="#">Taking the sting out of new and emerging health threats - UK Health Security Agency</a></li> <li>• <a href="#">Health security labs: Keeping us on the front foot in the fight against health hazards - UK Health Security Agency</a></li> </ul>
NHS Health Check	<ul style="list-style-type: none"> <li>• <a href="#">NHS Health Check</a></li> </ul>



<p>NOIDS / PHE Surveillance / Syndromic Surveillance</p>	<ul style="list-style-type: none"> <li>• <a href="#">Notifications of infectious diseases (NOIDs)</a></li> <li>• <a href="#">European collaboration on control of food-borne salmonella infections</a></li> <li>• <a href="#">National flu and Covid-19 surveillance report: 21 April 2022 (week 16)</a></li> <li>• <a href="#">National quarterly report of tuberculosis in England: Q1, 2022 provisional data</a></li> <li>• <a href="#">Notifiable diseases causative agents: week 16 (week ending 24 April 2022)</a></li> <li>• <a href="#">Notifications of infectious diseases (NOIDs) - GOV.UK (www.gov.uk)</a></li> <li>• <a href="#">European collaboration on control of food-borne salmonella infections</a></li> <li>• <a href="#">National influenza immunisation programme 2022 to 2023</a></li> <li>• <a href="#">Increase in hepatitis (liver inflammation) cases in children under investigation</a></li> <li>• <a href="#">Weekly national influenza and COVID-19 surveillance report (England): data to week 15 (21 April)</a></li> <li>• <a href="#">Group A streptococcal infections: report on seasonal activity in England, 2021 to 2022</a></li> <li>• <a href="#">Acquired carbapenemase-producing Gram-negative bacteria in England: October 2020 to December 2021</a></li> <li>• <a href="#">Avian influenza in wild birds - GOV.UK (www.gov.uk)</a></li> <li>• <a href="#">Coronavirus (COVID-19) Infection Survey, UK: antibody and vaccination data, 20 April 2022 - GOV.UK (www.gov.uk)</a></li> <li>• <a href="#">Coronavirus and self-isolation after testing positive in England: 17 to 26 March 2022 - GOV.UK (www.gov.uk)</a></li> <li>• <a href="#">Syndromic surveillance: systems and analyses</a></li> </ul>
<p>Addiction/Smoking</p>	<ul style="list-style-type: none"> <li>• <a href="#">Drink Coach</a></li> <li>• <a href="#">Stop smoking interventions and services</a></li> <li>• <a href="#">Medscape Exclusive News</a></li> </ul>

## Immunisation / Travel Health

- [Vaccinations and infections](#)
- [Joint Committee on Vaccination and Immunisation](#)
- [Immunisation against infectious disease](#)
- [West Midlands Immunisation Service](#)
- [Immunisation information for Health Care Services within the West Midlands area](#)
- [Vaccination of individuals with uncertain or incomplete immunisation status](#)
- [WHO vaccine-preventable diseases: monitoring system. 2020 global summary](#)
- [The Foundations of Immunization: What, Who, When and Why?](#)
- [Winter Vaccination - Prime phase: Social Media content calendar and assets - 2021](#)
- [Measles outbreak training](#)
- [Vaccine Safety Basics](#)
- [HPV vaccination: guidance for healthcare practitioners](#)
- [HPV vaccination programme for men who have sex with men \(MSM\)](#)
- [Changing to a 2 dose NHS HPV vaccination schedule letter](#)
- [Herpes zoster \(shingles\) immunisation programme 2021 to 2022: evaluation reports](#)
- [COVID-19 vaccine surveillance report: data to week 16 \(21 April\)](#)
- [Pertussis vaccination programme for pregnant women update: vaccine coverage in England, October to December 2021](#)
- [Quarterly vaccination coverage statistics for children aged up to 5 years in the UK \(COVER programme\): October to December 2021](#)

Flu

- [Flu and flu vaccinations](#)
- [The national influenza immunisation programme 2021 to 2022](#)
- [Flu vaccines for the 2021 to 2022 season poster](#)
- [Appendix C: Flu vaccinator competency assessment tool](#)
- [Healthcare assistants and flu vaccinations](#)
- [Flu Campaign Resources 2021/22](#)
- [National flu and COVID-19 surveillance reports published](#)
- [National flu immunisation programme plan 2022 to 2023 - GOV.UK \(www.gov.uk\)](#)

*Continuation of Immunisation / Travel Health*

Covid Vaccine	<ul style="list-style-type: none"> <li>• <a href="#">Greenbook COVID-19 chapter 14a</a></li> <li>• <a href="#">Updates made to the COVID-19 vaccination elearning programme</a></li> <li>• <a href="#">HEE e-LfH COVID-19 vaccination programme launches hit 2 million</a></li> <li>• <a href="#">COVID-19 Vaccine Moderna e-learning now available</a></li> <li>• <a href="#">GP COVID-19 vaccine dashboard</a></li> <li>• <a href="#">Coronavirus (COVID-19) vaccines adverse reactions</a></li> <li>• <a href="#">Sixth COVID-19 vaccine approved in UK   MIMS online</a></li> <li>• <a href="#">Resources - Coronavirus Resource centre (phe.gov.uk)</a></li> <li>• <a href="#">Coronavirus » Supporting COVID-19 vaccine uptake during Ramadan (england.nhs.uk)</a></li> <li>• <a href="#">Encouraging Covid-19 vaccine uptake - Nursing in Practice</a></li> <li>• <a href="#">Covid-19 Guide for Parents of 5-11 year olds - Coronavirus Resource centre (phe.gov.uk)</a></li> <li>• <a href="#">Children aged 5-11 in the Black Country &amp; West Birmingham are now eligible for the COVID-19 vaccine - YouTube</a></li> <li>• <a href="#">Unfolding the Future: How Will mRNA Technology Change the Landscape of Vaccination? (medscape.org)</a></li> <li>• <a href="#">Building Confidence in COVID-19 Vaccines: Why Are Millennials Hesitant? (medscape.org)</a></li> </ul>
Children	<ul style="list-style-type: none"> <li>• <a href="#">NHS England » One million families with five and six-year-olds invited for COVID jabs this week</a></li> <li>• <a href="#">Childhood Immunisations CPD   Child Health   Health Professional Academy</a></li> </ul>
Adults	<ul style="list-style-type: none"> <li>• <a href="#">Immunisation patient group direction (PGD) templates</a></li> <li>• <a href="#">Shingles immunisation programme: introduction of Shingrix® letter</a></li> </ul>
Vaccine Update	<ul style="list-style-type: none"> <li>• <a href="#">Vaccine update: Issue 325, April 2022 (publishing.service.gov.uk)</a></li> <li>• <a href="#">Vaccine Update Index</a></li> </ul>
PGD	
Travel Health	<ul style="list-style-type: none"> <li>• <a href="#">Travel Health Pro</a></li> <li>• <a href="#">Fit for Travel</a></li> <li>• <a href="#">Travel Health</a></li> <li>• <a href="#">Jane Chiodini</a></li> <li>• <a href="#">Corona.Help</a></li> </ul>

Mental Health / Learning Disability / Disability	
Mental Health	<ul style="list-style-type: none"> <li>• <a href="#">Mental Health</a></li> <li>• <a href="#">Mental Health UK</a></li> <li>• <a href="#">Mind</a></li> <li>• <a href="#">Place2b</a></li> <li>• <a href="#">Rethink Mental Illness</a></li> <li>• <a href="#">Young Minds</a></li> <li>• <a href="#">Every Mind Matters</a></li> <li>• <a href="#">Calm</a></li> <li>• <a href="#">Headspace</a></li> <li>• <a href="#">We Can Talk</a></li> <li>• <a href="#">Get Your Mind Plan</a></li> <li>• <a href="#">Feeling low?</a></li> <li>• <a href="#">Better Health - Every Mind Matters - Resources</a></li> <li>• <a href="#">ZSA Training</a></li> <li>• <a href="#">Psychiatry - Medscape</a></li> <li>• <a href="#">Call for evidence for new 10-year plan to improve mental health - GOV.UK (www.gov.uk)</a></li> <li>• <a href="#">HUHY Mental Health Services online resources :: Black Country and West Birmingham CCG (blackcountryandwestbirmccg.nhs.uk)</a></li> <li>• <a href="#">Coronavirus (COVID-19) and mental wellbeing - Every Mind Matters - NHS (www.nhs.uk)</a></li> <li>• <a href="#">Get Your Mind Plan - Every Mind Matters - NHS (www.nhs.uk)</a></li> <li>• <a href="#">Urgent changes needed to save mental health nursing, says HEE - Nursing in Practice</a></li> </ul>
Learning Disability	<ul style="list-style-type: none"> <li>• <a href="#">Learning Disabilities</a></li> <li>• <a href="#">Learning Disability England</a></li> <li>• <a href="#">Mencap</a></li> <li>• <a href="#">Bild</a></li> <li>• <a href="#">Autism</a></li> <li>• <a href="#">Autism Cafés :: Black Country and West Birmingham CCG (blackcountryandwestbirmccg.nhs.uk)</a></li> </ul>
Disability (Inc. hearing and visual)	<ul style="list-style-type: none"> <li>• <a href="#">Disability Rights UK</a></li> <li>• <a href="#">Disability Matters</a></li> <li>• <a href="#">Long Term Strategy BSL Video - Coronavirus Resource centre (phe.gov.uk)</a></li> </ul>

From Cradle to...

Infant Health	<ul style="list-style-type: none"> <li>• <a href="#">Tommys</a></li> <li>• <a href="#">First Steps Nutrition Trust</a></li> <li>• <a href="#">Bliss</a></li> <li>• <a href="#">NHS App - Baby Buddy</a></li> <li>• <a href="#">NHS App - Peanut</a></li> <li>• <a href="#">ICON Toolkit</a></li> </ul>
Child Health	<ul style="list-style-type: none"> <li>• <a href="#">Unicef</a></li> <li>• <a href="#">Health Professional Academy</a></li> <li>• <a href="#">Premature Babies</a></li> <li>• <a href="#">Child and Maternal Health</a></li> <li>• <a href="#">Women and Child First</a></li> <li>• <a href="#">Child Health Information Services</a></li> <li>• <a href="#">Place2b</a></li> <li>• <a href="#">Childhood eczema</a></li> <li>• <a href="#">Childhood asthma</a></li> <li>• <a href="#">Paediatrics for Primary Care (and anyone else) (gppaedstips.blogspot.com)</a></li> <li>• <a href="#">DUDLEY - Early help for children and families (dudley.gov.uk)</a></li> <li>• <a href="#">Increase in hepatitis (liver inflammation) cases in children under investigation - GOV.UK (www.gov.uk)</a></li> </ul>
Adolescent Health	<ul style="list-style-type: none"> <li>• <a href="#">Adolescent Health Programme</a></li> <li>• <a href="#">Society for Adolescent Health and Medicine</a></li> <li>• <a href="#">Young Minds</a></li> <li>• <a href="#">Emotional Support for Young People - The Health Foundation</a></li> </ul>
Mens Health	<ul style="list-style-type: none"> <li>• <a href="#">Mens Health Forum</a></li> <li>• <a href="#">Mens Health Month</a></li> <li>• <a href="#">Mens health.org</a></li> <li>• <a href="#">Mens Health UK</a></li> <li>• <a href="#">Men and mental health</a></li> <li>• <a href="#">Men's Mental Health Awareness</a></li> <li>• <a href="#">Prostate Cancer UK</a></li> <li>• <a href="#">Orchid Fighting Male Cancer</a></li> <li>• <a href="#">Prostate Cancer UK Facebook Page</a></li> <li>• <a href="#">Men's Voices Event</a></li> <li>• <a href="#">Movember</a></li> <li>• <a href="#">Interprofessional Clinic: A Team-Based Approach to Oral Therapies in Prostate Cancer (medscape.org)</a></li> </ul>

<p>Women's Health</p>	<ul style="list-style-type: none"> <li>• <a href="#">Womens Health Concern</a></li> <li>• <a href="#">Well Being of Women</a></li> <li>• <a href="#">Coppa Feel</a></li> <li>• <a href="#">Menopause Matters</a></li> <li>• <a href="#">The Menopause Charity</a></li> <li>• <a href="#">Royal College of Obstetricians and Gynaecologists - Guidelines</a></li> <li>• <a href="#">Pelvic Partnership</a></li> <li>• <a href="#">CRUK - Womens Cancer</a></li> <li>• <a href="#">Breast Cancer Now</a></li> <li>• <a href="#">Foundation for Women's Cancer</a></li> <li>• <a href="#">Eve Appeal</a></li> <li>• <a href="#">Ovarian.Org</a></li> <li>• <a href="#">Jo's Trust</a></li> <li>• <a href="#">Well Spring</a></li> <li>• <a href="#">Inquiry into women's health and well-being in prisons</a></li> </ul>
<p>The Older Population</p>	<ul style="list-style-type: none"> <li>• <a href="#">BGS</a></li> <li>• <a href="#">Ageing Better</a></li> <li>• <a href="#">The State of Ageing 2022</a></li> <li>• <a href="#">Ageing, inequality and ethnicity: Evidence cards   Centre for Ageing Better (ageing-better.org.uk)</a></li> </ul>
<p>Young Carers</p>	
<p>Complex Needs</p>	
<p>Carers / Social Care / Care Homes</p>	<ul style="list-style-type: none"> <li>• <a href="#">The Care Provider Alliance</a></li> <li>• <a href="#">Skills for Care</a></li> <li>• <a href="#">The Care Workers' Charity</a></li> <li>• <a href="#">Supporting Adult Carers</a></li> <li>• <a href="#">Overview   Supporting adult carers   Guidance   NICE</a></li> <li>• <a href="#">Overview   Supporting adult carers   Quality standards   NICE</a></li> <li>• <a href="#">Social Care Institute for Excellence</a></li> </ul>

Family Planning & Sexual Health	
Family Planning	<ul style="list-style-type: none"> <li>• <a href="#">Faculty of Sexual and Reproductive Healthcare Education and Training</a></li> </ul>
Reproductive	<ul style="list-style-type: none"> <li>• <a href="#">Tommys</a></li> </ul>
Sexual Health / Sexual Abuse	<ul style="list-style-type: none"> <li>• <a href="#">Sexual and Reproductive Health Profiles</a></li> <li>• <a href="#">FSRH Education &amp; Training</a></li> </ul>
Maternity / Neonate health	
Care of Patients with Long Term Conditions	
LTC	<ul style="list-style-type: none"> <li>• <a href="#">Chronic Conditions On Demand</a></li> <li>• <a href="#">Chronic Conditions Month 2022</a></li> </ul>
Diabetes & Pre-Diabetes	<ul style="list-style-type: none"> <li>• <a href="#">AZ Medical and Educational Goods and Services in Diabetes</a></li> <li>• <a href="#">Mumoactive</a></li> <li>• <a href="#">The mySugr App</a></li> <li>• <a href="#">Foot Check</a></li> <li>• <a href="#">Thousands of people with diabetes set to benefit from real time information after updated NICE recommendations   News and features   News   NICE</a></li> <li>• <a href="#">NEW: SMART Update – NG28 – NICE Guidance (mailchi.mp)</a></li> <li>• <a href="#">Napp: Now available ON DEMAND: Learn about recent NICE guideline updates on the management of adults with type 2 diabetes (Promotional email) (mailchi.mp)</a></li> <li>• <a href="#">Best Practice Cardiology Care for the Patient With Diabetes and High CV Risk (medscape.org)</a></li> <li>• <a href="#">NHS England » NHS Diabetes Prevention Programme: re-procurement consultation</a></li> <li>• <a href="#">Recommendations   Type 2 diabetes in adults: management   Guidance   NICE</a></li> <li>• <a href="#">Time in Range – An alternative or useful addition to HbA1c in T1D? Promotional Invitation email from Sanofi (mailchi.mp)</a></li> </ul>
Respiratory	<ul style="list-style-type: none"> <li>• <a href="#">Spirometry: step by step</a></li> <li>• <a href="#">ARTP</a></li> <li>• <a href="#">British Lung Foundation</a></li> <li>• <a href="#">The Primary Care Respiratory Society</a></li> <li>• <a href="#">Respiratory Disease - elearning for healthcare (e-lfh.org.uk)</a></li> <li>• <a href="#">Our top tips for protecting your lungs (engagingnetworks.app)</a></li> <li>• <a href="#">GPnotebook focus on respiratory medicine (contains promotional information) (mailchi.mp)</a></li> <li>• <a href="#">Coronavirus advice + lung conditions (engagingnetworks.app)</a></li> <li>• <a href="#">CRB65 score in the assessment of community acquired pneumonia (CAP) - General Practice Notebook (gpnotebook.com)</a></li> <li>• <a href="#">Emerging From the Shadows: Expert Perspectives on the True Burden of RSV in Older Adults (medscape.org)</a></li> <li>• <a href="#">Support groups for you (e-activist.com)</a></li> </ul>

*Continuation of Long Term Conditions*

COPD	<ul style="list-style-type: none"> <li>• <a href="#">Right Breathe</a></li> </ul>
Asthma	<ul style="list-style-type: none"> <li>• <a href="#">FeNO - Fractional exhaled nitric oxide - for the diagnosis and management of Asthma</a></li> <li>• <a href="#">Asthma UK</a></li> <li>• <a href="#">Asthma: diagnosis, monitoring and chronic asthma management</a></li> <li>• <a href="#">GINA 2021: the missing pieces in the childhood asthma puzzle</a></li> <li>• <a href="#">GINA: Interim Guidance About COVID-19 &amp; Asthma</a></li> </ul>
Hypertension	<ul style="list-style-type: none"> <li>• <a href="#">British Heart Foundation</a></li> <li>• <a href="#">Blood Pressure UK</a></li> <li>• <a href="#">Hypertension in adults: diagnosis and management</a></li> <li>• <a href="#">Hypertension in adults: diagnosis and treatment</a></li> <li>• <a href="#">Using tech to monitor your health at home - what can the NHS learn?   Healthwatch</a></li> </ul>
CVD/AF	<ul style="list-style-type: none"> <li>• <a href="#">QRISK®3-2018 risk calculator</a></li> <li>• <a href="#">Heart Rhythm Alliance</a></li> <li>• <a href="#">CVD risk assessment and management</a></li> <li>• <a href="#">AHA Journals</a></li> <li>• <a href="#">Briefing (healthwatch.co.uk)</a></li> <li>• <a href="#">Best Practice Cardiology Care for the Patient With Diabetes and High CV Risk (medscape.org)</a></li> <li>• <a href="#">Vital Facts About Multi-Faceted GLP-1 RAs for the Cardiology Team: Short Questions -- Prompt Replies (medscape.org)</a></li> <li>• <a href="#">Number of people with atrial fibrillation at all-time high - Nursing in Practice</a></li> </ul>
Heart Failure	<ul style="list-style-type: none"> <li>• <a href="#">British Heart Foundation</a></li> <li>• <a href="#">British Society Guidelines</a></li> <li>• <a href="#">Consider safety of calcium supplements in older people with aortic stenosis, say researchers   MIMS online</a></li> </ul>
Cancer / Oncology	<ul style="list-style-type: none"> <li>• <a href="#">Surviving Thyroid Cancer</a></li> <li>• <a href="#">Help Us Help You - Lung Cancer Symptoms</a></li> <li>• <a href="#">Becca Breast Cancer Support App</a></li> <li>• <a href="#">Breast Cancer Now</a></li> <li>• <a href="#">MoleCare App</a></li> <li>• <a href="#">Macmillian</a></li> <li>• <a href="#">Bowel Cancer UK</a></li> <li>• <a href="#">Cancer care: how to speak to patients with a poor prognosis (rcni.com)</a></li> <li>• <a href="#">Cancer online resources :: Black Country and West Birmingham CCG (blackcountryandwestbirmccg.nhs.uk)</a></li> <li>• <a href="#">Interprofessional Clinic: A Team-Based Approach to Oral Therapies in Prostate Cancer (medscape.org)</a></li> </ul>



*Continuation of Long Term Conditions*

Chronic Kidney Disease	<ul style="list-style-type: none"> <li>• <a href="#">Kidney.Org</a></li> <li>• <a href="#">Kidney Quality Improvement Partnership</a></li> <li>• <a href="#">Home Dialysis: Questions and Answers for Medscape Members</a></li> </ul>
Liver Disease	<ul style="list-style-type: none"> <li>• <a href="#">British Liver Trust</a></li> <li>• <a href="#">Liver Research</a></li> <li>• <a href="#">BRITISH ASSOCIATION FOR THE STUDY OF THE LIVER</a></li> <li>• <a href="#">LIVERNORTH</a></li> <li>• <a href="#">LIVER DISEASE AND CIRRHOSIS</a></li> </ul>
Blood Disorders	<ul style="list-style-type: none"> <li>• <a href="#">Blood Cancer</a></li> <li>• <a href="#">Thalassaemia</a></li> <li>• <a href="#">ITP</a></li> <li>• <a href="#">Haemophilia</a></li> <li>• <a href="#">UK MDS Forum</a></li> <li>• <a href="#">Save a life. Give plasma.</a></li> <li>• <a href="#">Diagnosis and management of pernicious anaemia</a></li> <li>• <a href="#">Haemochromatosis UK</a></li> </ul>
G.I	<ul style="list-style-type: none"> <li>• <a href="#">GIST Cancer UK</a></li> <li>• <a href="#">Overview   PredictSURE IBD and IBDX to guide treatment of Crohn's disease</a></li> </ul>
ENT	
G.U	
Neurological Conditions	<ul style="list-style-type: none"> <li>• <a href="#">The Brain Tumour Charity</a></li> <li>• <a href="#">Narcolepsy.Org</a></li> <li>• <a href="#">ACNR</a></li> <li>• <a href="#">Neurology - Medscape</a></li> </ul>

*Continuation of Long Term Conditions*

<p>Musculoskeletal Conditions</p>	<ul style="list-style-type: none"> <li>• <a href="#">Rheumatology</a></li> <li>• <a href="#">National Axial Spondyloarthritis Society</a></li> <li>• <a href="#">Musculoskeletal health</a></li> <li>• <a href="#">Musculoskeletal health: 5 year prevention strategic framework</a></li> <li>• <a href="#">Faculty of Occupational Medicine</a></li> <li>• <a href="#">Guide to embedding your first contact physiotherapy service</a></li> <li>• <a href="#">Overview   Joint replacement (primary): hip, knee and shoulder   Quality standards   NICE</a></li> <li>• <a href="#">Thousands of people set to benefit from first new treatment for osteoporosis for over a decade   News and features   News   NICE</a></li> </ul>
<p>Endocrine Disorders / Metabolic Disorders</p>	<ul style="list-style-type: none"> <li>• <a href="#">Endocrinology</a></li> <li>• <a href="#">Turner Syndrome Support Society</a></li> <li>• <a href="#">Thyroid Eye Disease</a></li> <li>• <a href="#">British Thyroid Foundation</a></li> <li>• <a href="#">Thyroid UK</a></li> <li>• <a href="#">Pituitary</a></li> <li>• <a href="#">Addisons Disease</a></li> <li>• <a href="#">Parathyroid UK</a></li> <li>• <a href="#">The Royal Osteoporosis Society</a></li> <li>• <a href="#">Metabolic Support UK</a></li> </ul>
<p>Frailty</p>	<ul style="list-style-type: none"> <li>• <a href="#">Recognising frailty</a></li> <li>• <a href="#">Identifying frailty</a></li> <li>• <a href="#">CLINICAL FRAILTY SCALE</a></li> </ul>
<p>Dementia</p>	<ul style="list-style-type: none"> <li>• <a href="#">Dementia UK</a></li> <li>• <a href="#">Understanding dementia</a></li> <li>• <a href="#">My House of Memories - NHS App</a></li> <li>• <a href="#">Dementia profile updates</a></li> <li>• <a href="#">Caring for Carers Dementia Support Group (Tuesdays)</a></li> <li>• <a href="#">Delirium Champions</a></li> <li>• <a href="#">Medscape Dementia</a></li> </ul>

*Continuation of Long Term Conditions*

Dermatology	<ul style="list-style-type: none"> <li>• <a href="#">British Association of Dermatologists</a></li> <li>• <a href="#">Eczema</a></li> <li>• <a href="#">The British Skin Foundation</a></li> <li>• <a href="#">Acne vulgaris: management</a></li> <li>• <a href="#">The Primary Care Dermatology Society</a></li> <li>• <a href="#">Acne.org</a></li> <li>• <a href="#">Allergy UK</a></li> <li>• <a href="#">Urticaria</a></li> <li>• <a href="#">Hives</a></li> <li>• <a href="#">Sunburn</a></li> <li>• <a href="#">Causes of cancer and reducing your risk</a></li> <li>• <a href="#">What is Rosacea?</a></li> <li>• <a href="#">Rosecea</a></li> <li>• <a href="#">Herpes.org</a></li> <li>• <a href="#">Shingles</a></li> <li>• <a href="#">Fungal Skin Infection - Foot</a></li> <li>• <a href="#">The Psoriasis Association</a></li> <li>• <a href="#">Psoriasis</a></li> <li>• <a href="#">Melanoma</a></li> <li>• <a href="#">Skin Health Information</a></li> <li>• <a href="#">British Association of Plastic Reconstructive and Aesthetic Surgeons</a></li> <li>• <a href="#">Warts and verrucae</a></li> <li>• <a href="#">Dermatology News &amp; Reports   (nursinginpractice.com)</a></li> </ul>
Allergy / Auto-immune / Genetic Conditions	<ul style="list-style-type: none"> <li>• <a href="#">Allergy UK</a></li> <li>• <a href="#">Rheumatology</a></li> <li>• <a href="#">Addisons Disease</a></li> </ul>
Obesity	<ul style="list-style-type: none"> <li>• <a href="#">Obesity UK</a></li> <li>• <a href="#">Keep the size of your waist to less than half of your height, updated NICE draft guideline recommends   News and features   News   NICE</a></li> </ul>
Pain Management	<ul style="list-style-type: none"> <li>• <a href="#">Pain Concern</a></li> <li>• <a href="#">UK career framework for pain nurses</a></li> </ul>
Genomics	
Multi-Morbidity	<ul style="list-style-type: none"> <li>• <a href="#">Multimorbidity</a></li> <li>• <a href="#">Multimorbidity / multiple long-term conditions (MLTC)</a></li> </ul>

<i>Continuation of Long Term Conditions</i>	
Minor Illness / First Contact Assessment / OSCE	<ul style="list-style-type: none"> <li>• <a href="#">Fact Sheets - Self Care Forum</a></li> </ul>
Other / Case Studies	<ul style="list-style-type: none"> <li>• <a href="#">Ultra Rare Disease Disorders And Disabilities Foundation</a></li> <li>• <a href="#">MyCognition Home - NHS App</a></li> <li>• <a href="#">The Cold Weather Plan for England</a></li> </ul>
End of Life Care	
End of Life Care	<ul style="list-style-type: none"> <li>• <a href="#">ReSPECT for healthcare professionals</a></li> <li>• <a href="#">Hospice UK</a></li> </ul>
Covid-19	
Covid-19	<ul style="list-style-type: none"> <li>• <a href="#">Covid Live</a></li> <li>• <a href="#">Coronavirus Statistics</a></li> <li>• <a href="#">Coronavirus (Covid-19) infection survey technical article: cumulative incidence of the number of people who have tested positive for Covid-19</a></li> <li>• <a href="#">Coronavirus (Covid-19) infection survey, UK: 22 April 2022</a></li> <li>• <a href="#">Covid-19 Health Inequalities Monitoring in England tool (CHIME)</a></li> <li>• <a href="#">Covid-19 vaccine surveillance report: 21 April 2022 (week 16)</a></li> <li>• <a href="#">Covid-19 variants: distribution of case data, 22 April 2022</a></li> <li>• <a href="#">Coronavirus » Suspected coronavirus (COVID-19): important information to keep you safe while at home (england.nhs.uk)</a></li> </ul>
Long Covid	<ul style="list-style-type: none"> <li>• <a href="#">Supporting your recovery after COVID-19</a></li> <li>• <a href="#">Long Covid Toolkit</a></li> <li>• <a href="#">Long term effects of COVID (Long COVID)</a></li> <li>• <a href="#">Post-COVID Syndrome (Long COVID)</a></li> <li>• <a href="#">COVID-19 Yorkshire Rehabilitation Screening Tool</a></li> <li>• <a href="#">FOM Guidance</a></li> <li>• <a href="#">Lung health care after COVID-19</a></li> </ul>
Covid Response / Recovery	

News & Views	
Digital News / Remote Consultations	<ul style="list-style-type: none"> <li>• <a href="#">Digital Health News Webinars</a></li> <li>• <a href="#">Digital Health News</a></li> <li>• <a href="#">NHS Digital</a></li> <li>• <a href="#">Your daily news updates from Digital Health (campaign-archive.com)</a></li> <li>• <a href="#">Read the new Special Report on Integrated Care (mailchi.mp)</a></li> <li>• <a href="#">Digital Health Networks Newsletter: 25 April 2022 (mailchi.mp)</a></li> <li>• <a href="#">[Webinar] Developing the NHS AI &amp; Analytics workforce (mailchi.mp)</a></li> <li>• <a href="#">Your opportunity to attend the UK's largest digital healthcare event (digitalhealthcareshow.com)</a></li> </ul>
PSNC News / Pharmacy	<ul style="list-style-type: none"> <li>• <a href="#">National Pharmacy Association</a></li> <li>• <a href="#">Royal Pharmaceutical Society</a></li> <li>• <a href="#">Medicines Learning Portal</a></li> <li>• <a href="#">Specialist Pharmacy Service</a></li> <li>• <a href="#">Pharmacy Review Steering Group Update: Proposals to be published this week and upcoming briefing events (mailchi.mp)</a></li> <li>• <a href="#">PSNC Newsletter: 27th April (mailchi.mp)</a></li> <li>• <a href="#">PSNC Briefing 013/22: Summary of the results of PSNC's 2022 Pharmacy Pressures Survey</a></li> </ul>
Pulse / GP Online / HSJ / NB Medical	<ul style="list-style-type: none"> <li>• <a href="#">GP Online</a></li> <li>• <a href="#">HSJ</a></li> <li>• <a href="#">Pulse Today</a></li> </ul>
Primary Care Update / PCC / PPP	<ul style="list-style-type: none"> <li>• <a href="#">Public Policy Projects News</a></li> </ul>
Health Care Leaders Newsletters	
Kings Fund	<ul style="list-style-type: none"> <li>• <a href="#">The Kings Fund</a></li> <li>• <a href="#">Ideas that change health and care</a></li> <li>• <a href="#">Working with provider collaboratives (kingsfundmail.org.uk)</a></li> <li>• <a href="#">Provider collaboratives: explaining their role in system working   The King's Fund (kingsfund.org.uk)</a></li> <li>• <a href="#">Your leadership newsletter: April 2022 (kingsfundmail.org.uk)</a></li> </ul>

*Continuation News & Views*

World Health Organisation	<ul style="list-style-type: none"> <li>• <a href="#">WHO</a></li> <li>• <a href="#">OpenWHO</a></li> </ul>
IHCT / CCG / STP / Healthier Futures	<ul style="list-style-type: none"> <li>• <a href="#">Healthier Futures</a></li> <li>• <a href="#">Black Country &amp; West Birmingham CCG</a></li> <li>• <a href="#">Dudley Integrated Health and Care</a></li> <li>• <a href="#">Home :: Black Country Healthcare NHS Foundation Trust</a></li> <li>• <a href="#">Your Friday Round Up - Friday 8th April 2022 (mailchi.mp)</a></li> <li>• <a href="#">Campaigns and toolkits :: Black Country and West Birmingham CCG (blackcountryandwestbirmccg.nhs.uk)</a></li> <li>• <a href="#">BCWB Communications Toolkit (campaign-archive.com)</a></li> <li>• <a href="#">Toolkit to support stakeholders and system partners to promote the NHS App to their contacts</a></li> <li>• <a href="#">Follow us Healthier Future posts</a></li> </ul>
NHSI / NHSE	
University / Student Nurses	
Medisa / Univadis / Geeky Medics / GP Notebook / Medscape	<ul style="list-style-type: none"> <li>• <a href="#">Univadis Newsletter</a></li> <li>• <a href="#">Univadis Nurses Headlines</a></li> <li>• <a href="#">Medisa</a></li> <li>• <a href="#">Geeky Medics</a></li> <li>• <a href="#">Medscape Nurses</a></li> <li>• <a href="#">GP Notebook</a></li> <li>• <a href="#">Today's daily essentials (medscape.com)</a></li> <li>• <a href="#">Medscape Exclusive News</a></li> <li>• <a href="#">GPnotebook quick update (contains promotional information) (mailchi.mp)</a></li> <li>• <a href="#">Latest podcast episodes from GPnotebook (mailchi.mp)</a></li> </ul>
The Health Foundation	<ul style="list-style-type: none"> <li>• <a href="#">The Health Foundation</a></li> </ul>
The Health Care Leaders Update	<ul style="list-style-type: none"> <li>• <a href="#">Health Care Leader News</a></li> </ul>
Practice Index	
Innovation Agency	<ul style="list-style-type: none"> <li>• <a href="#">Innovation Agency Exchange</a></li> </ul>

*Continuation News & Views*

RCN	<ul style="list-style-type: none"> <li>• <a href="#">RCN</a></li> <li>• <a href="#">Agency nurse struck off for using derogatory language and slurs (rcni.com)</a></li> <li>• <a href="#">NHS Mileage top-up aimed at softening blow of petrol price hike (rcni.com)</a></li> <li>• <a href="#">Short-staffed and attacked by patients: who safeguards nurses? (rcni.com)</a></li> <li>• <a href="#">Warning issued after nurse loses £45,000 in pension fraud (rcni.com)</a></li> <li>• <a href="#">Give a 'cwtch' after a fall – a checklist to help older patients (rcni.com)</a></li> <li>• <a href="#">Fuel costs forcing nurses to look for jobs elsewhere (rcni.com)</a></li> <li>• <a href="#">Overcome self-limiting beliefs to build confidence – and your career (rcni.com)</a></li> <li>• <a href="#">Experiences of a community of research practice: a service evaluation (rcni.com)</a></li> <li>• <a href="#">Preventing healthcare-associated infections by decontaminating the clinical environment (rcni.com)</a></li> <li>• <a href="#">Time to stop NHS blame culture and learn from failures, say MPs (rcni.com)</a></li> <li>• <a href="#">Stop using 'outdated' language that disempowers patients (rcni.com)</a></li> </ul>
Nursing in Practice / Nursing Standard / Independent Nurse	<ul style="list-style-type: none"> <li>• <a href="#">Nursing Times</a></li> <li>• <a href="#">Independent Nurse Magazine</a></li> <li>• <a href="#">Practice Nursing</a></li> <li>• <a href="#">Practice Nursing Bulletin</a></li> <li>• <a href="#">Practice Nursing Clinical Bulletin</a></li> <li>• <a href="#">Flexible working: have new rules transformed nurses' lives? (rcni.com)</a></li> <li>• <a href="#">Fabricant refuses to withdraw claim of nurses drinking in staff rooms (rcni.com)</a></li> <li>• <a href="#">When can relatives make decisions about a patient's care? (rcni.com)</a></li> <li>• <a href="#">Providing music therapy for people with dementia in an acute mental health setting (rcni.com)</a></li> <li>• <a href="#">Why I chose to become a nurse – and why I choose to stay (rcni.com)</a></li> </ul>
QNI	<ul style="list-style-type: none"> <li>• <a href="#">QNI</a></li> <li>• <a href="#">QNI events in May(mailchi.mp)</a></li> </ul>
NMC	<ul style="list-style-type: none"> <li>• <a href="#">NMC</a></li> </ul>
CMO / CNO	
WHO	<ul style="list-style-type: none"> <li>• <a href="#">WHO</a></li> </ul>
Nice	<ul style="list-style-type: none"> <li>• <a href="#">NICE</a></li> <li>• <a href="#">NICE News for Health and Social Care   April 2022 (mailchi.mp)</a></li> </ul>
RCGP / BMA / The Lancet	<ul style="list-style-type: none"> <li>• <a href="#">The Lancet</a></li> <li>• <a href="#">British Medical Journal</a></li> <li>• <a href="#">Royal College of General Practitioners</a></li> </ul>

Midlands Academic Health Science Network	<ul style="list-style-type: none"> <li>• <a href="#">WMAHSN Network</a></li> </ul>
Healthwatch	<ul style="list-style-type: none"> <li>• <a href="#">Healthwatch</a></li> </ul>
Other	
Free Training / Webinars / Meetings / CPD	
Development / Information and Knowledge	<ul style="list-style-type: none"> <li>• <a href="#">FutureProof Health Training &amp; Events</a></li> <li>• <a href="#">Red Whale Training</a></li> <li>• <a href="#">LATEST WEBINARS FROM ISSUES &amp; ANSWERS</a></li> <li>• <a href="#">Nursing Events</a></li> <li>• <a href="#">GP Update - Latest Updates (gp-update.co.uk)</a></li> <li>• <a href="#">Webinar next week: Closing the gap – launching an independent review on health inequalities in Scotland (healthfdn.org.uk)</a></li> <li>• <a href="#">Your April Best Practice Show Bulletin is here</a></li> <li>• <a href="#">Webinar Registration - Zoom -Whose Patient is it Anyway? Diabetes /</a></li> <li>• <a href="#">NEW: SMART Update – NG28 – NICE Guidance (mailchi.mp)</a></li> <li>• <a href="#">Chronic Conditions - Chronic Conditions LTC Webinars</a></li> <li>• <a href="#">Join us at NHS ConfedExpo 2022 - Skills for Health</a></li> <li>• <a href="#">WOLVERHAMPTON - WST Training Update - April 2022 (govdelivery.com)</a></li> <li>• <a href="#">Hot Topics Urgent Care - Live Webinar - Saturday 7th May 2022</a></li> </ul>
YouTube	<ul style="list-style-type: none"> <li>• <a href="#">NHS England</a></li> </ul>
Blogs/Vlogs	
Area Bulletins	
BCWB Training Hub	
Evidence based care	

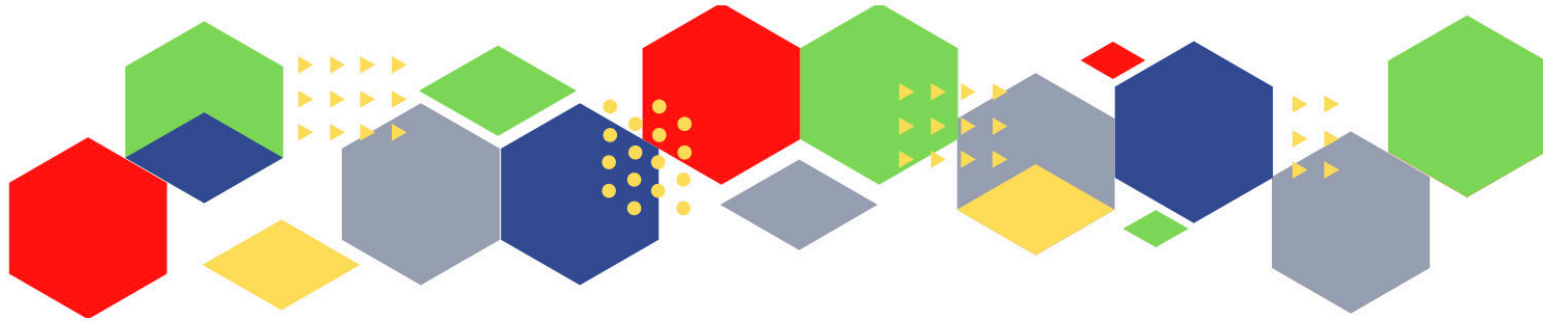


*Continuation of Free Training / Webinars / Meetings / CPD*

<p>Eventbrite</p>	<ul style="list-style-type: none"> <li>• <a href="#">Future Proof Health Eventbrite Page</a></li> <li>• <a href="#">Acute Behavioural Crisis in CAMHS Registration, Multiple Dates   Eventbrite</a></li> <li>• <a href="#">Palliative &amp; end of life care for people experiencing homelessness (2-day) Tickets, Thu 5 May 2022 at 09:00   Eventbrite</a></li> <li>• <a href="#">Diabetes Education Update: 9 Care Processes and 3 Treatment Targets</a></li> <li>• <a href="#">Spreading VGCs at scale: Learnings from 2021 – 25<sup>th</sup> May, 12:30-13:45 - <a href="https://www.eventbrite.co.uk/e/250120606467">https://www.eventbrite.co.uk/e/250120606467</a></a></li> <li>• <a href="#">Emerging models in diabetes – 14<sup>th</sup> June, 12:30-13:30 - <a href="https://www.eventbrite.co.uk/e/250128078817">https://www.eventbrite.co.uk/e/250128078817</a></a></li> <li>• <a href="#">Supporting families and children through VGCs – 13<sup>th</sup> July, 12:30-13:30 - <a href="https://www.eventbrite.co.uk/e/250133545167">https://www.eventbrite.co.uk/e/250133545167</a></a></li> <li>• <a href="#">Wound care - ConvaTec Events   Eventbrite</a></li> <li>• <a href="#">Algorithm to diagnosis and management of adult knee problems</a></li> </ul>
<p>e-Learning for Health</p>	<ul style="list-style-type: none"> <li>• <a href="#">New elearning session highlights dermatological side effects of COVID-19</a></li> <li>• <a href="#">New COVID-19 community contact tracing programme now available</a></li> <li>• <a href="#">Staff Recovery Resources for critical care and the wider health workforce recovering from the COVID-19 pandemic</a></li> <li>• <a href="#">MindEd infographic highlights programme's success during COVID-19</a></li> <li>• <a href="#">Long COVID elearning session available</a></li> <li>• <a href="#">The Changing Story of Cancer programme</a></li> <li>• <a href="#">Updates to the Flu Immunisation elearning programme for the 2021/22 flu season</a></li> <li>• <a href="#">Flu Immunisation programme - elearning</a></li> <li>• <a href="#">Foundation elearning programme update September 2021</a></li> <li>• <a href="#">Virtual wards enabled by technology - elearning for healthcare (e-lfh.org.uk)</a></li> </ul>

*Continuation of Free Training / Webinars / Meetings / CPD*

Free to RCN	
Podcasts	<ul style="list-style-type: none"> <li>• <a href="#">The Nursing Handover Podcast</a></li> <li>• <a href="#">Nursing Standard Podcasts</a></li> <li>• <a href="#">What Makes a Nurse?</a></li> <li>• <a href="#">The MedicsPro Podcast</a></li> <li>• <a href="#">Nursing Matters</a></li> <li>• <a href="#">Welcome to the BJN Podcast</a></li> <li>• <a href="#">Why we care</a></li> <li>• <a href="#">EBN podcast</a></li> <li>• <a href="#">This Is Nursing</a></li> <li>• <a href="#">Maroon Mindset</a></li> <li>• <a href="#">Teach me, I'm a Nurse</a></li> <li>• <a href="#">Past Caring</a></li> <li>• <a href="#">RCGP eLearning podcast</a></li> <li>• <a href="#">The BMJ Podcast</a></li> <li>• <a href="#">Primary Care Network podcasts</a></li> <li>• <a href="#">The Professional Support Unit's Pandemic Podcast</a></li> <li>• <a href="#">How can public health nurses help deliver the Healthy Child Programme this winter?</a></li> <li>• <a href="#">Talking GP</a></li> <li>• <a href="#">Podcast – Matthew Winn – ICS Incoming.... Primary Care and Community Trusts</a></li> <li>• <a href="#">NB Hot Topics Podcast</a></li> <li>• <a href="#">Podcast: Will the rising cost of living be paid for by our health? (healthfdn.org.uk)</a></li> <li>• <a href="#">Lovegrove on Health - Podcast episode #4 - Skills for Health</a></li> <li>• <a href="#">Latest podcast episodes from GPnotebook (mailchi.mp)</a></li> </ul>
Research	<ul style="list-style-type: none"> <li>• <a href="#">Science Daily</a></li> <li>• <a href="#">Multimorbidity / multiple long-term conditions (MLTC)</a></li> <li>• <a href="#">Funding bodies launch consultation on future research assessment</a></li> <li>• <a href="#">HRA Latest 28 April 2022: Urgent action to recover health and social care research; My foray into public involvement; Innovating to help patients with life-threatening conditions and more... (govdelivery.com)</a></li> </ul>
Freebies	<ul style="list-style-type: none"> <li>• <a href="#">Blue Light Card</a></li> </ul>
Other	



Thank you for reading Future Proof Health's weekly news!

If you missed past issues, please click [here](#) to view them

More information can be found on our website, [here](#)

Don't forget to like us on [Facebook](#) & Follow us on [Twitter](#)

