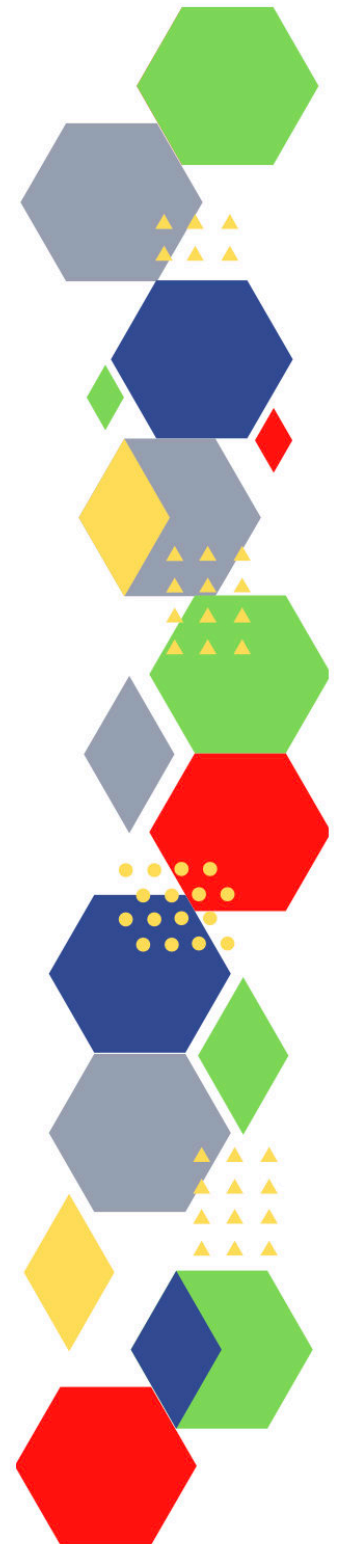
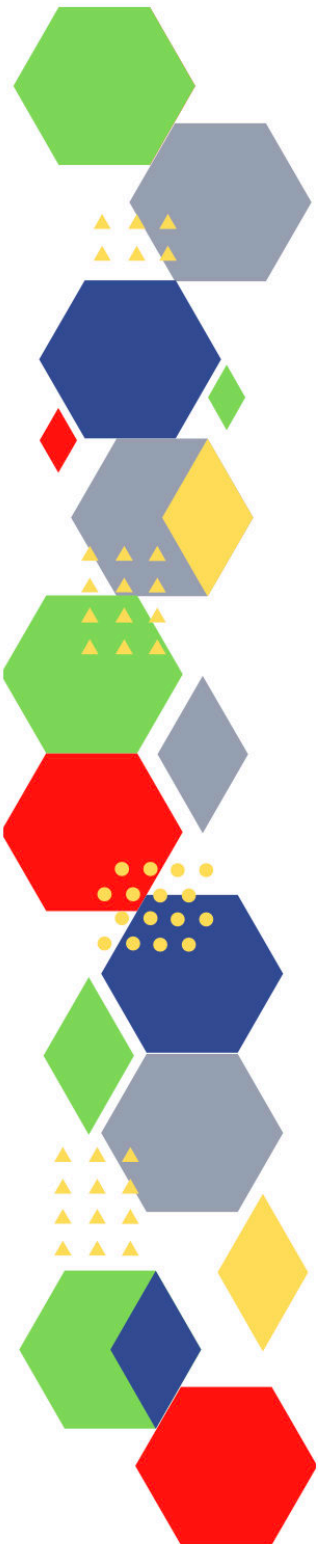




Future Proof Health Presents

Weekly News

26th July 2022



Communication	
Communication with Patients	
Communication within Teams	
Consent	<ul style="list-style-type: none"> • Gillick competency and Fraser guidelines • CONSENT POLICY • ReSPECT for healthcare professionals
People and Personal Development	
Personal / People Development / Leadership	<ul style="list-style-type: none"> • Accountability and delegation in practice • Report template (mcusercontent.com)
NHS Employers / HR / NHS Pension	<ul style="list-style-type: none"> • NHS Employers • Pensions Online • Experiences of Racial Discrimination and Harassment in London Primary Care
Health, Safety & Security	
	<ul style="list-style-type: none"> • NPSA • Control of Substances Hazardous to Health (COSHH) • Weekly Digest Newsletter: working safely in hot conditions (govdelivery.com)
Gov UK - NHS	
CQC	<ul style="list-style-type: none"> • GP mythbusters • Examples of outstanding practice for GPs • Weekly Digest Newsletter: working safely in hot conditions (govdelivery.com)
MIMS	<ul style="list-style-type: none"> • Prescribing Update
Antibiotic steward-ship / Anti-microbial resistance	
Drug / Device Alerts (MHRA)	
Emergency Situations	<ul style="list-style-type: none"> • The updated National Early Warning Score and its use with suspected Sepsis • Resuscitation Council UK

Vaccines / Medications / Prescribing	<ul style="list-style-type: none"> • Protocol for ordering, storing and handling vaccines • A Competency Framework for all Prescribers • Non-medical prescribing • The Human Medicines Regulations 2012 • RCN - Non-medical prescribers • Royal Pharmaceutical Society • Standards for prescribing • Clinical Negligence Scheme for General Practice • Home - electronic medicines compendium (emc)
Infection Control / Infection Statics	
Safe Guarding	<ul style="list-style-type: none"> • Female genital mutilation (FGM) • PREVENT • Child protection system in the UK • Safeguarding Adults • Safeguarding children: detailed information • Wolverhampton WeCAN Toolkit Relaunch - 21st June 2022 (govdelivery.com) • Safeguarding children: detailed information
Practice Policies	
Audit	
Information Governance / Record Keeping	<ul style="list-style-type: none"> • Guide to Data Protection • Supporting general practice – Medical record keeping
Quality & Service Improvement	
Quality, Service & Improvement	<ul style="list-style-type: none"> • The PRSB • General Practice Assessment Questionnaire (GPAQ) • Healthwatch • NHS Five Year Forward View • General Practice Forward View • NMC • Dr Jon Griffiths • NHS Confed

Roles in General Practice	<ul style="list-style-type: none"> • Standards for nursing associates • GP mythbuster 57: Health Care Assistants in General Practice
Revalidation	
Personal Practice & Development	<ul style="list-style-type: none"> • General practice nursing capabilities framework - Skills for Health (createsend1.com)
Practice Management	<ul style="list-style-type: none"> • Institute of General Practice Management • Practice Index
Employment	
NHS Self Care & Resilience	<ul style="list-style-type: none"> • Samaritans • Mental Health at work • Calm • Supporting our NHS people • The Hub :: Black Country Healthcare NHS Foundation Trust • NHS England » Retaining our nursing and midwifery colleagues
Practice Transformation / Innovation Agency	<ul style="list-style-type: none"> • NHS England » Statutory medical examiner system (createsend1.com) • Who can issue fit notes: guidance for healthcare professionals and their employers - GOV.UK (createsend1.com) • The Fit Note - elearning for healthcare (createsend1.com) • NHS England » Latest updates (createsend1.com)
Future of NHS / General Practice / NHS Recovery	<ul style="list-style-type: none"> • NHS England » High street pharmacies spot cancers in new NHS early diagnosis drive • Health and Social Care Secretary sets out vision for year ahead - GOV.UK (www.gov.uk) • NHS England » Retaining our nursing and midwifery colleagues • Addressing backlogs and managing waiting lists during and beyond the COVID-19 pandemic (who.int) • Patients Registered at a GP Practice, July 2022 - GOV.UK (www.gov.uk) • NHS England » Record tests and checks delivered by NHS alongside high demand for A&Es and ambulances • Statistics » GP Patient Survey 2022 (england.nhs.uk) • NHS England » One million checks delivered by NHS 'one stop shops'
ICS / ICB / ICP / PCN Commissioning	<ul style="list-style-type: none"> • NHS England » Who Pays? Determining which NHS commissioner is responsible for commissioning healthcare services and making payments to providers • Are ICSs getting off to the right start? The King's Fund (kingsfund.org.uk)

QOF / PHOF / DES / LES / NHS Contract / CQRS / CQUIN	
Leadership / Innovation	<ul style="list-style-type: none"> • Leadership Academy • Free learning and development offers (campaign-archive.com)
Greener NHS	
Personalised Care	
Personalised Care / Self Care / Social Prescribing / Health Coaching	<ul style="list-style-type: none"> • Self Care forum • Personalised Care Institute • Personalised care • Social Prescribing Academy • PCC Events
Group consultation	
Working Differently	
Shared Decision Making	
Equality & Diversity	
Equality & Diversity	<ul style="list-style-type: none"> • Public Health Profiles
Inclusion Health	<ul style="list-style-type: none"> • Health Creation Academic Network
Poverty / Homelessness	<ul style="list-style-type: none"> • Crisis • This is Poverty
Population Health / Health Communities	
Thrive Into Work	<ul style="list-style-type: none"> • Thrive into Work • Thrive into Work Referral form

<i>Continuation of Equality & Diversity</i>	
Health Inequalities	<ul style="list-style-type: none"> • Engaging and supporting marginalised communities, supporting earlier diagnosis of cancer, and improving cardiovascular disease diagnosis and prevention
Trans / Non-binary Health / LGBTQ+	<ul style="list-style-type: none"> • LGBT Foundation • NHS population screening: information for trans and non-binary people • Cervical screening for trans men and/or non-binary people
Migrant / Refugee Health	<ul style="list-style-type: none"> • THE REFUGEE & MIGRANT CENTRE • Supporting refugee and migrant health care in England The King's Fund (kingsfund.org.uk)
Traveller / Gypsy / Romany Health	
Veterans Health	<ul style="list-style-type: none"> • The first call for help takes courage
<i>Management of Emergency Situations</i>	
Management of Emergency Situations	<ul style="list-style-type: none"> • The updated National Early Warning Score and its use with suspected Sepsis • Practice Nursing - Acute onset low back pain leading to a diagnosis of cauda equina syndrome: a case study • Practice Nursing - Anaphylaxis: how to recognise and manage in primary care
111	<ul style="list-style-type: none"> • NHS England » Why think Same Day Emergency Care? One-page guides for ambulance and NHS 111 clinicians
First Contact	<ul style="list-style-type: none"> • Supporting general practice – Common pitfalls • Paediatrics for Primary Care (and anyone else) (gppaedstips.blogspot.com)
Red Flags	
Sepsis	<ul style="list-style-type: none"> • Sepsis: recognition, diagnosis and early management • Sepsis guidance implementation advice for adults • Sepsis in Children • Sepsis Trust • RCGP: Sepsis • quick SEPSIS RELATED ORGAN FAILURE ASSESSMENT

Continuation of Emergency Situations

Therapeutic Monitoring	
OSCE	<ul style="list-style-type: none"> • Geeky Medics • Abdominal Examination - Demonstration - YouTube • Cardiovascular Examination - Demonstration - YouTube • Respiratory Examination - Demonstration - YouTube • Physical Diagnosis Skills - University of Washington School of Medicine • Practice Nursing - Assessment and examination of the respiratory system
Role Specific	
Cervical Cytology	<ul style="list-style-type: none"> • Guide to the interim assessment • British Association for Cytopathology • Lab Tests Online • Female Genital Mutilation, Jan 2022 - March 2022 - GOV.UK (www.gov.uk) • Practice Nursing - Understanding HPV and cervical screening
Ear Care	<ul style="list-style-type: none"> • Ear Care Centre • RNID
Wound Management	<ul style="list-style-type: none"> • Microworld • Tissue Viability Society • The BLS • Wounds on Thursdays • Practice Nursing - Preventing skin tears among older adults in general practice
Minor Surgery	
Obtaining Samples / Results	<ul style="list-style-type: none"> • Lab Tests Online

Health Promotion / Health Screening	
Health Promotion / Population Health	<ul style="list-style-type: none"> • Better Health • EXi App • Apps - Lets Get (lets-get.com) • Free training to run exercise sessions (govdelivery.com) – Dudley
Health Screening	<ul style="list-style-type: none"> • PHE Screening
PHE / OHID / UKHSA	<ul style="list-style-type: none"> • Knowledge & Library Services • Campaign Resources • Public Health Profiles • Health Publications • Health Profile for England 2021 • English indices of deprivation 2019 • Health Protection Report volume 16 (2022) - GOV.UK (www.gov.uk)
NHS Health Check	<ul style="list-style-type: none"> • NHS Health Check
Addiction/Smoking	<ul style="list-style-type: none"> • Drink Coach • Stop smoking interventions and services • Statistics on NHS Stop Smoking Services in England April 2021 to June 2021 - GOV.UK (www.gov.uk) • Accord-UK launches a portfolio of innovative solutions to help battle addiction (contains promotional material) (mgp.co.uk) • Heavy drinkers four times more likely to smoke, study suggests - Nursing in Practice

Continuation of Health Promotion / Health Screening

NOIDS / PHE Surveillance /
Syndromic Surveillance

- [Syndromic surveillance: systems and analyses - GOV.UK \(www.gov.uk\)](https://www.gov.uk)
- [Notifiable diseases: causative agents reports for 2022 - GOV.UK \(www.gov.uk\)](https://www.gov.uk)
- [Avian influenza in wild birds - GOV.UK \(www.gov.uk\)](https://www.gov.uk)
- [Notifiable diseases: last 52 weeks - GOV.UK \(www.gov.uk\)](https://www.gov.uk)
- [Notifiable diseases: weekly reports for 2022 - GOV.UK \(www.gov.uk\)](https://www.gov.uk)
- [Ambulance Quality Indicators Clinical Outcomes for February 2022 - GOV.UK \(www.gov.uk\)](https://www.gov.uk)
- [Provisional Monthly Hospital Episode Statistics for Admitted Patient Care, Outpatient and Accident and Emergency data, April 2022 - May 2022 - GOV.UK \(www.gov.uk\)](https://www.gov.uk)
- [Referrals for first consultant-led outpatient appointments for May 2022 - GOV.UK \(www.gov.uk\)](https://www.gov.uk)
- [Referral to treatment waiting times statistics for consultant -led elective care for May 2022 - GOV.UK \(www.gov.uk\)](https://www.gov.uk)
- [A&E attendances and emergency admissions for June 2022 and Quarterly report \(Q1\) - GOV.UK \(www.gov.uk\)](https://www.gov.uk)
- [A&E attendances and emergency admissions for June 2022 and Quarterly report \(Q1\) - GOV.UK \(www.gov.uk\)](https://www.gov.uk)
- [Diagnostic waiting times and activity for May 2022 - GOV.UK \(www.gov.uk\)](https://www.gov.uk)
- [Provisional Accident and Emergency Quality Indicators for England, May 2022, by provider - GOV.UK \(www.gov.uk\)](https://www.gov.uk)
- [Waiting times for suspected and diagnosed cancer patients for May 2022 - GOV.UK \(www.gov.uk\)](https://www.gov.uk)
- [Integrated Urgent Care Aggregate Data Collection \(IUC ADC\) for May 2022 \(Official statistics\) - GOV.UK \(www.gov.uk\)](https://www.gov.uk)
- [Mixed Sex Accommodation breaches for May 2022 - GOV.UK \(www.gov.uk\)](https://www.gov.uk)
- [Integrated Urgent Care Aggregate Data Collection \(IUC ADC\) – for June 2022 \(Provisional statistics\) - GOV.UK \(www.gov.uk\)](https://www.gov.uk)
- [National norovirus and rotavirus bulletins 2021 to 2022: management information - GOV.UK \(www.gov.uk\)](https://www.gov.uk)
- [Syndromic surveillance: weekly summaries for 2022 - GOV.UK \(www.gov.uk\)](https://www.gov.uk)
- [Remote health advice: weekly bulletins for 2022 - GOV.UK \(www.gov.uk\)](https://www.gov.uk)
- [GP out-of-hours syndromic surveillance: weekly bulletins for 2022 - GOV.UK \(www.gov.uk\)](https://www.gov.uk)
- [Emergency department: weekly bulletins for 2022 - GOV.UK \(www.gov.uk\)](https://www.gov.uk)
- [GP in hours: weekly bulletins for 2022 - GOV.UK \(www.gov.uk\)](https://www.gov.uk)
- [National ambulance syndromic surveillance: weekly bulletins 2022 - GOV.UK \(www.gov.uk\)](https://www.gov.uk)

Immunisation / Travel Health

- [Vaccinations and infections](#)
- [Joint Committee on Vaccination and Immunisation](#)
- [Immunisation against infectious disease](#)
- [West Midlands Immunisation Service](#)
- [Immunisation information for Health Care Services within the West Midlands area](#)
- [Vaccination of individuals with uncertain or incomplete immunisation status](#)
- [WHO vaccine-preventable diseases: monitoring system. 2020 global summary](#)
- [The Foundations of Immunization: What, Who, When and Why?](#)
- [Winter Vaccination - Prime phase: Social Media content calendar and assets - 2021](#)
- [Measles outbreak training](#)
- [Vaccine Safety Basics](#)
- [Dr Nikki Kanani: values, vaccines and a vision for general practice | The King's Fund \(kingsfund.org.uk\)](#)
- [Practice Nursing - You know where you can stick that ... or do you? Where to inject the deltoid and why](#)
- [Practice Nursing - Pneumococcal disease and vaccination: recent changes to the schedule](#)

Flu

- [Flu and flu vaccinations](#)
- [The national influenza immunisation programme 2021 to 2022](#)
- [Flu vaccines for the 2021 to 2022 season poster](#)
- [Appendix C: Flu vaccinator competency assessment tool](#)
- [Healthcare assistants and flu vaccinations](#)
- [Flu Campaign Resources 2021/22](#)
- [National flu and COVID-19 surveillance reports published](#)
- [National flu immunisation programme plan 2022 to 2023 - GOV.UK \(www.gov.uk\)](#)
- [UKHSA flu immunisation 2022–2023 guideline | PHE/DH/DWP guideline | Guidelines](#)

<i>Continuation of Immunisation / Travel Health</i>	
Covid Vaccine	<ul style="list-style-type: none"> • Greenbook COVID-19 chapter 14a • Updates made to the COVID-19 vaccination elearning programme • HEE e-LfH COVID-19 vaccination programme launches hit 2 million • COVID-19 Vaccine Moderna e-learning now available • GP COVID-19 vaccine dashboard • Coronavirus (COVID-19) vaccines adverse reactions • Coronavirus and vaccination rates in people aged 18 years and over by socio-demographic characteristic and region, England: 10 June 2022 - GOV.UK (www.gov.uk) • JCVI updated statement on the COVID-19 vaccination programme for autumn 2022 - GOV.UK (www.gov.uk) • NHS England » COVID-19 autumn booster and flu vaccine programme expansion
Children	
Adults	<ul style="list-style-type: none"> • Immunisation patient group direction (PGD) templates • Shingles immunisation programme: introduction of Shingrix® letter
Vaccine Update	<ul style="list-style-type: none"> • Vaccine update: Issue 325, April 2022 (publishing.service.gov.uk)
PGD	
Travel Health	<ul style="list-style-type: none"> • Travel Health Pro • Fit for Travel • Travel Health • Jane Chiodini • Corona.Help • Practice Nursing - Guidelines for malaria prevention in travellers: what is new? • Practice Nursing - Rabies: an update for nurses in general practice

Mental Health / Learning Disability / Disability

<p>Mental Health</p>	<ul style="list-style-type: none"> • Mental Health • Mental Health UK • Mind • Place2b • Rethink Mental Illness • Young Minds • Every Mind Matters • Calm • Headspace • We Can Talk • Get Your Mind Plan • Feeling low? • Better Health - Every Mind Matters - Resources • ZSA Training • Psychiatry - Medscape • Practice Nursing - Improving physical health in people with severe mental illness • Practice Nursing - The role of primary care in preventing male suicide • Out of Area Placements in Mental Health Services, April 2022 - GOV.UK (www.gov.uk) • Mental Health Services Monthly Statistics, Performance April, Provisional May 2022 - GOV.UK (www.gov.uk) • Psychological Therapies: reports on the use of IAPT services, England, April 2022 Final including a report on the IAPT Employment Advisers pilot - GOV.UK (www.gov.uk) • Eliminating Inappropriate Out of Area Placements in Mental Health • HEE elfh Hub (createsend1.com)
<p>Learning Disability</p>	<ul style="list-style-type: none"> • Learning Disabilities • Learning Disability England • Mencap • Bild • Autism • Building the right support for people with a learning disability and autistic people - GOV.UK (www.gov.uk)
<p>Disability (Inc. hearing and visual)</p>	<ul style="list-style-type: none"> • Disability Rights UK • Disability Matters • RNID - National hearing loss charity

From Cradle to...

<p>Infant Health</p>	<ul style="list-style-type: none"> • Tommys • First Steps Nutrition Trust • Bliss • NHS App - Baby Buddy • NHS App - Peanut • ICON Toolkit
<p>Child Health</p>	<ul style="list-style-type: none"> • Unicef • Health Professional Academy • Premature Babies • Child and Maternal Health • Women and Child First • Child Health Information Services • Place2b • Childhood eczema • Childhood asthma • Paediatrics for Primary Care (and anyone else) (gppaedstips.blogspot.com) • Me first: Helping health and care professionals communicate more effectively with children and young people • Practice Nursing - Managing allergic rhinitis in children and young people • Practice Nursing - Measles: An overview for practice nurses • Practice Nursing - Preventing back-to-school asthma attacks
<p>Adolescent Health</p>	<ul style="list-style-type: none"> • Adolescent Health Programme • Society for Adolescent Health and Medicine • Young Minds

<p>Mens Health</p>	<ul style="list-style-type: none"> • Mens Health Forum • Mens Health Month • Mens health.org • Mens Health UK • Men and mental health • Men's Mental Health Awareness • Prostate Cancer UK • Orchid Fighting Male Cancer • Prostate Cancer UK Facebook Page • Men's Voices Event • Movember • Practice Nursing - Management pathways for erectile dysfunction in primary care • Practice Nursing - The role of primary care in preventing male suicide
<p>Women's Health</p>	<ul style="list-style-type: none"> • Womens Health Concern • Well Being of Women • Coppa Feel • Menopause Matters • The Menopause Charity • Royal College of Obstetricians and Gynaecologists - Guidelines • Pelvic Partnership • CRUK - Womens Cancer • Breast Cancer Now • Foundation for Women's Cancer • Eve Appeal • Ovarian.Org • Jo's Trust • Well Spring • New best practice recommendations for menopause care published MIMS online • Newson Health - Home • Practice Nursing - Managing the side effects of contraception • Practice Nursing - Hormone replacement therapy: update and practical prescribingPractice Nursing - Urinary incontinence and pelvic organ prolapse in primary care • Pelvic floor dysfunction: key tenets from the new NICE guideline (mgp.co.uk)

The Older Population	<ul style="list-style-type: none"> • BGS • Ageing Better • Delirium Champions - YouTube • Practice Nursing - Understanding skin infections in older adults
Carers / Social Care / Care Homes	<ul style="list-style-type: none"> • The Care Provider Alliance • Skills for Care • The Care Workers' Charity • Supporting Adult Carers • Adult Social Care Update • Adult social care in England, monthly statistics: July 2022 - GOV.UK (www.gov.uk) • Evidence on costs associated with NHS-funded nursing care: 2021 to 2022 - GOV.UK (www.gov.uk) • Recruitment and retention in adult social care, a qualitative study - GOV.UK (www.gov.uk)
Young Carers	
Complex Needs	
Family Planning & Sexual Health	
Family Planning	<ul style="list-style-type: none"> • Faculty of Sexual and Reproductive Healthcare Education and Training • Practice Nursing - Common questions on emergency and postcoital contraception • Practice Nursing - Managing the side effects of contraception
Reproductive	<ul style="list-style-type: none"> • Tommys
Sexual Health / Sexual Abuse	<ul style="list-style-type: none"> • Sexual and Reproductive Health Profiles • FSRH Education & Training
Maternity / Neonate health	<ul style="list-style-type: none"> • Practice Nursing - Exercise and pregnancy: information for practice nurses • Depression during pregnancy can impact foetal brain development, study finds - Nursing in Practice

Care of Patients with Long Term Conditions	
LTC	<ul style="list-style-type: none"> • Physical Activity for the Prevention and Management of Long-Term Conditions
Diabetes & Pre-Diabetes	<ul style="list-style-type: none"> • AZ Medical and Educational Goods and Services in Diabetes • Mumoactive • The mySugr App • Practice Nursing - Improving outcomes for older people with diabetes • Practice Nursing - Management pathways for erectile dysfunction in primary care • Practice Nursing - Pre-diabetes and cardiovascular risk: detonating the time bomb
Respiratory	<ul style="list-style-type: none"> • Spirometry: step by step • ARTP • British Lung Foundation • The Primary Care Respiratory Society • Respiratory News & Advice (nursinginpractice.com) • Template PI (dgft.nhs.uk) – Dudley pulmonary rehab • Improving outcomes for people living with breathlessness (mah-communications.co.uk) • Our hot weather top tips! (e-activist.com) • Practice Nursing - Improving outcomes for people living with breathlessness • Practice Nursing - Identification and management of dysfunctional breathing in primary care • Practice Nursing - Medicines adherence in respiratory disease • Practice Nursing - Non-tuberculous mycobacterial lung disease in general practice
Asthma	<ul style="list-style-type: none"> • FeNO - Fractional exhaled nitric oxide - for the diagnosis and management of Asthma • Asthma UK • Asthma: diagnosis, monitoring and chronic asthma management • GINA 2021: the missing pieces in the childhood asthma puzzle • GINA: Interim Guidance About COVID-19 & Asthma • SIGN and BTS management of asthma in children guideline Independent professional body guideline Guidelines • Digital tools may cut asthma attacks risk by half, study suggests - Nursing in Practice • Practice Nursing - Seasonal asthma: should it be managed differently? • Practice Nursing - Asthma guidelines: which is the best of three? • Practice Nursing - Inhaled therapy for asthma • Practice Nursing - Preventing back-to-school asthma attacks • Practice Nursing - Caring for people with asthma in primary care

Continuation of Long Term Conditions

COPD	<ul style="list-style-type: none"> • Right Breathe • GOLD COPD 2022 strategy Independent professional body guideline Guidelines • Practice Nursing - COPD, exacerbation and self-management: a literature review • Practice Nursing - Diagnosing COPD in general practice • Practice Nursing - Increasing physical activity in people with COPD • Practice Nursing - Monitoring respiratory rate in adults
Hypertension	<ul style="list-style-type: none"> • British Heart Foundation • Blood Pressure UK • Hypertension in adults: diagnosis and management • Hypertension in adults: diagnosis and treatment • NICE hypertension guideline NICE guideline Guidelines
CVD/AF	<ul style="list-style-type: none"> • QRISK®3-2018 risk calculator • Heart Rhythm Alliance • CVD risk assessment and management • AHA Journals • NHS lipid management pathway NHS guideline Guidelines • Practice Nursing - Understanding primary prevention of cardiovascular disease
Heart Failure	<ul style="list-style-type: none"> • British Heat Foundation • British Society Guidelines • Practice Nursing - Understanding the pharmacology of heart failure
Cancer / Oncology	<ul style="list-style-type: none"> • Surviving Thyroid Cancer • Help Us Help You - Lung Cancer Symptoms • Becca Breast Cancer Support App • Breast Cancer Now • MoleCare App • Macmillian • Bowel Cancer UK • NHS England » Thousands of patients to benefit as NHS marks 100th fast-tracked cancer drug • Address health inequalities to improve cancer outcomes Hot topic Guidelines in Practice (mgp.co.uk) • FIT Symptomatic Cancer Research UK (createsend1.com)
Chronic Kidney Disease	<ul style="list-style-type: none"> • Kidney.Org • Kidney Quality Improvement Partnership

Continuation of Long Term Conditions

Liver Disease	<ul style="list-style-type: none"> • British Liver Trust • Liver Research • BRITISH ASSOCIATION FOR THE STUDY OF THE LIVER • LIVERnORTH • LIVER DISEASE AND CIRRHOSIS
Blood Disorders	<ul style="list-style-type: none"> • Blood Cancer • Thalassaemia • ITP • Haemophilia • UK MDS Forum • Save a life. Give plasma. • Diagnosis and management of pernicious anaemia • Haemochromatosis UK • Managing iron deficiency anaemia Video Guidelines in Practice • Practice Nursing - Understanding vitamin B12 and folate deficiency • Practice Nursing - Anaemia in primary care: iron deficiency and anaemia of chronic disease
G.I	<ul style="list-style-type: none"> • GIST Cancer UK • Practice Nursing - Understanding constipation in adults
ENT	<ul style="list-style-type: none"> • Practice Nursing - Managing otalgia in general practice • Dysphagia in the older person: an update • Managing allergic rhinitis in children and young people
G.U	<ul style="list-style-type: none"> • Practice Nursing - Urinary incontinence and pelvic organ prolapse in primary care
ME / CFS / Fibromyalgia	<ul style="list-style-type: none"> • ME Association • ME Research • Action for ME • FMA UK • Fibromyalgia UK • Home - Fibromyalgia Awareness UK (fibroawarenessuk.org) • Fibromyalgia - Symptoms, diagnosis and treatment BMJ Best Practice • Fibromyalgia - The Brain Charity
Neurological Conditions	<ul style="list-style-type: none"> • The Brain Tumour Charity • Narcolepsy.Org • ACNR • NICE epilepsies guideline NICE guideline Guidelines

Continuation of Long Term Conditions

<p>Musculoskeletal Conditions</p>	<ul style="list-style-type: none"> • Rheumatology • National Axial Spondyloarthritis Society • Musculoskeletal health • Musculoskeletal health: 5 year prevention strategic framework • Faculty of Occupational Medicine • Guide to embedding your first contact physiotherapy service
<p>Endocrine Disorders / Metabolic Disorders</p>	<ul style="list-style-type: none"> • Endocrinology • Turner Syndrome Support Society • Thyroid Eye Disease • British Thyroid Foundation • Thyroid UK • Pituitary • Addisons Disease • Parathyroid UK • The Royal Osteoporosis Society • Metabolic Support UK
<p>Frailty</p>	<ul style="list-style-type: none"> • Recognising frailty • Identifying frailty • CLINICAL FRAILTY SCALE • Assessment of frailty in Alzheimer's: a literature review • Practice Nursing - Dysphagia in the older person: an update • Practice Nursing - Preventing skin tears among older adults in general practice
<p>Dementia / Alzheimers</p>	<ul style="list-style-type: none"> • Dementia UK • Understanding dementia • My House of Memories - NHS App • Dementia profile updates • Caring for Carers Dementia Support Group (Tuesdays) • Delirium Champions • Practice Nursing - Assessment of frailty in Alzheimer's: a literature review • Alzheimers
<p>Allergy / Auto-immune / Genetic Conditions</p>	<ul style="list-style-type: none"> • Allergy UK • Rheumatology • Addisons Disease

Continuation of Long Term Conditions

Obesity	<ul style="list-style-type: none"> • Obesity UK • Practice Nursing - Understanding bariatric surgery to support patients in primary care • Adult tier 2 weight management services provisional data for quarters 1 to 4, 2021 to 2022 (experimental statistics) - GOV.UK (www.gov.uk)
Pain Management	<ul style="list-style-type: none"> • Pain Concern • UK career framework for pain nurses
Genomics	<ul style="list-style-type: none"> • Regulatory Horizons Council report on genetic technologies - GOV.UK (www.gov.uk)
Dermatology	<ul style="list-style-type: none"> • British Association of Dermatologists • Eczema • The British Skin Foundation • Acne vulgaris: management • The Primary Care Dermatology Society • Acne.org • Allergy UK • Urticaria • Hives • Sunburn • Causes of cancer and reducing your risk • What is Rosacea? • Rosecea • Herpes.org • Shingles • Fungal Skin Infection - Foot • The Psoriasis Association • Psoriasis • Melanoma • Skin Health Information • British Association of Plastic Reconstructive and Aesthetic Surgeons • Warts and verrucae • Acne vulgaris: management • Practice Nursing - Dermatology prescribing update: eczema • Practice Nursing - Understanding skin infections in older adults • Practice Nursing - Fungal skin infections

<i>Continuation of Long Term Conditions</i>	
Multi-Morbidity	<ul style="list-style-type: none"> • Multimorbidity • Multimorbidity / multiple long-term conditions (MLTC)
Minor Illness / First Contact Assessment / OSCE	<ul style="list-style-type: none"> • Fact Sheets - Self Care Forum • Practice Nursing - Measles: An overview for practice nurses • Practice Nursing - Tick-borne diseases: an update for general practice • Practise judicious use of antibiotics for acute otitis media Implementing guidelines Guidelines in Practice (mgp.co.uk)
Other / Case Studies	<ul style="list-style-type: none"> • Ultra Rare Disease Disorders And Disabilities Foundation • MyCognition Home - NHS App • Heatwave: how to cope in hot weather - NHS (www.nhs.uk) • Practice Nursing - Evidence-based management of disease-related malnutrition: updated guidance
End of Life Care	
End of Life Care	<ul style="list-style-type: none"> • ReSPECT for healthcare professionals • Hospice UK
Covid-19 / Monkeypox	
Covid-19	<ul style="list-style-type: none"> • Covid Live • Practice Nursing - Understanding the use of pulse oximetry in COVID-19 disease • Coronavirus (COVID-19) hospital admissions in pregnant women, England: 8 December 2020 to 31 August 2021 - GOV.UK (www.gov.uk) • Coronavirus (COVID-19) Infection Survey, UK: antibody and vaccination data, 13 July 2022 - GOV.UK (www.gov.uk) • National flu and COVID-19 surveillance reports: 2021 to 2022 season - GOV.UK (www.gov.uk) • National flu and COVID-19 surveillance reports: 2022 to 2023 season - GOV.UK (www.gov.uk) • COVID-19 therapeutic agents: technical briefings - GOV.UK (www.gov.uk) • Coronavirus (COVID-19) Infection Survey, UK: 15 July 2022 - GOV.UK (www.gov.uk)

<i>Continuation of Covid-19 / Monkeypox</i>	
Long Covid	<ul style="list-style-type: none"> • Supporting your recovery after COVID-19 • Long Covid Toolkit • Long term effects of COVID (Long COVID) • Post-COVID Syndrome (Long COVID) • COVID-19 Yorkshire Rehabilitation Screening Tool • FOM Guidance • Lung health care after COVID-19 • Practice Nursing - Living with long COVID • Draw on expert opinion to optimise care for long COVID Hot topic Guidelines in Practice (mgp.co.uk)
Monkeypox	<ul style="list-style-type: none"> • Monkeypox outbreak: epidemiological overview - GOV.UK (www.gov.uk)
News & Views	
Digital News / Remote Consultations	<ul style="list-style-type: none"> • Digital Health News Webinars • Digital Health News • NHS Digital • Public Sector Events, Conferences and Training - Inside Government • Adoption Fund 2022-2023 - Key tools and information - NHS Transformation Directorate (nhsx.nhs.uk)
PSNC News / Pharmacy	<ul style="list-style-type: none"> • National Pharmacy Association • Royal Pharmaceutical Society • Medicines Learning Portal • Specialist Pharmacy Service • Dudley Respiratory Group • Home - electronic medicines compendium (emc)
Pulse / GP Online / HSJ / NB Medical	<ul style="list-style-type: none"> • GP Online • HSJ • Pulse Today
Primary Care Update / PCC / PPP	<ul style="list-style-type: none"> • Public Policy Projects News • Primary Care Bulletin

<i>Continuation of News & Views</i>	
Health Care Leaders Newsletters	
Kings Fund	<ul style="list-style-type: none"> • The Kings Fund • Ideas that change health and care The King's Fund (kingsfund.org.uk) • Provider collaboration virtual conference (kingsfundmail.org.uk)
World Health Organisation	<ul style="list-style-type: none"> • WHO • OpenWHO
IHCT / CCG / STP / Healthier Futures	<ul style="list-style-type: none"> • Healthier Futures • Black Country & West Birmingham CCG • Dudley Integrated Health and Care • Dudley CCG • Home :: Black Country Healthcare NHS Foundation Trust
NHSI / NHSE	
University / Student Nurses	
Medisa / Univadis / Geeky Medics / GP Notebook / Medscape	<ul style="list-style-type: none"> • Univadis Newsletter • Univadis Nurses Headlines • Medisa • Geeky Medics • Medscape Nurses • GP Notebook
Nurse Guidelines	
The Health Foundation	<ul style="list-style-type: none"> • The Health Foundation
Practice Index	
The Health Care Leaders Update	<ul style="list-style-type: none"> • Health Care Leader News
Innovation Agency	<ul style="list-style-type: none"> • Innovation Agency Exchange

Continuation News & Views

RCN	<ul style="list-style-type: none"> • RCN • Nurse warns of patient risk as neighbour dies after wait for care (rcni.com) • Nurses' views needed on proposed changes to education standards (rcni.com) • Oncology nurse consultant: what I learned about breaking bad news (rcni.com) • It's not always kind to keep older people in bed (rcni.com) • Why it is about time that records of any 'use of force' are kept (rcni.com) • Demanding more for nursing Royal College of Nursing (rcn.org.uk) • Current RCN elections and appointments Royal College of Nursing • RCN research shows huge numbers of patients being treated in corridors and on trollies News Royal College of Nursing • Drop in nursing programme applications a 'real cause for concern' News Royal College of Nursing (rcn.org.uk) • MPs vote to approve regulations to use agency staff to cover striking workers News Royal College of Nursing (rcn.org.uk) • Industrial action explained RCN Magazines Royal College of Nursing • How to deliver a powerful point to a politician RCN Magazines Royal College of Nursing • 'We're all part of the solution in social care' RCN Magazines Royal College of Nursing
Nursing in Practice / Nursing Standard / Independent Nurse	<ul style="list-style-type: none"> • Nursing Times • Independent Nurse Magazine • Practice Nursing • Practice Nursing Bulletin • GPN Bulletin • Nursing in Practice - Clinical • Nursing in Practice - Bulletin
QNI	<ul style="list-style-type: none"> • QNI • Talk To Us © – The Queen's Nursing Institute (qni.org.uk)
NMC	<ul style="list-style-type: none"> • NMC • New post-registration standards published; consultation on education standards (news-nmc.org.uk)
CMO / CNO	

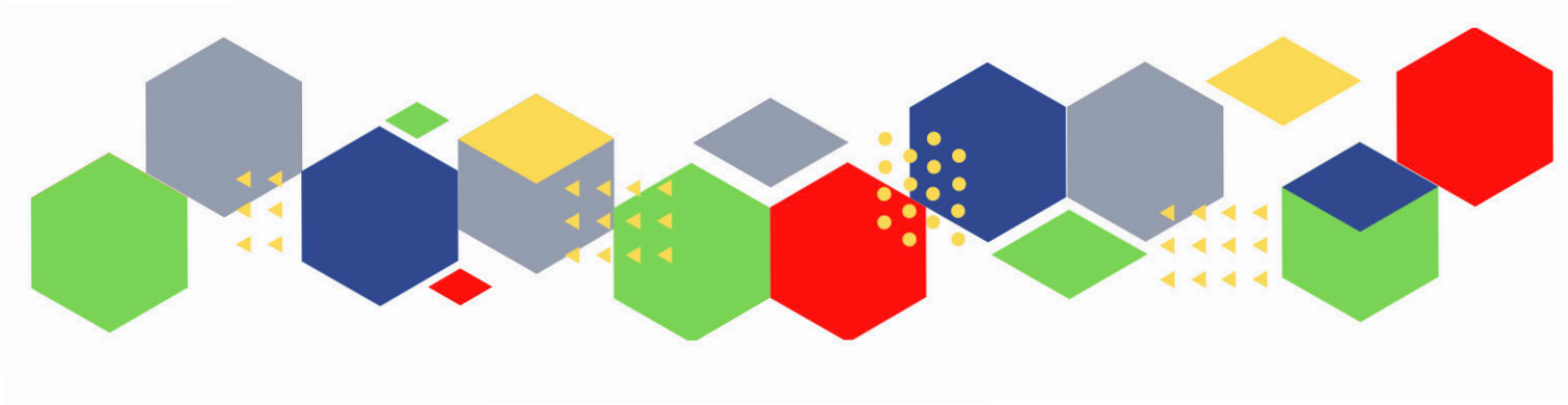
WHO	<ul style="list-style-type: none"> • WHO
Nice	<ul style="list-style-type: none"> • NICE
RCGP / BMA / The Lancet	<ul style="list-style-type: none"> • The Lancet • British Medical Journal • Royal College of General Practitioners
Midlands Academic Health Science Network	<ul style="list-style-type: none"> • WMAHSN Network • WMAHSN May Update
Healthwatch	<ul style="list-style-type: none"> • Healthwatch
Other	<ul style="list-style-type: none"> • Patients Association
Free Training / Webinars / Meetings / CPD	
Development / Information and Knowledge	<ul style="list-style-type: none"> • FutureProof Health Training & Events • Red Whale Training • LATEST WEBINARS FROM ISSUES & ANSWERS • Nursing Events • 🖱️ Check out the brand new Study Group sessions on Mental Health, Cardiology and More! (mailchi.mp) • Get the latest advice on continuous glucose monitoring at Guidelines Live Guidelines Live Guidelines in Practice (mgp.co.uk) • Learn how to apply updated type 2 diabetes guidance at Guidelines Live (mgp.co.uk) • 27 July, 10.30am - 12pm. Recruiting patient and public voice (PPV) partners • 28 July, 11am - 12pm. Fleetwood: connecting professional stakeholders to support the growth of the community • 🖱️🖱️ Watch Chronic Conditions Month On Demand (mailchi.mp)

Continuation of Free Training / Webinars / Meetings / CPD

Free to RCN	
MIMMs Learning	
Future Proof Health Training	
BCWB Training Hub	
Evidence based care	
Eventbrite	
e-Learning for Health	<ul style="list-style-type: none"> • New elearning session highlights dermatological side effects of COVID-19 • New COVID-19 community contact tracing programme now available • Staff Recovery Resources for critical care and the wider health workforce recovering from the COVID-19 pandemic • MindEd infographic highlights programme's success during COVID-19 • Long COVID elearning session available • The Changing Story of Cancer programme • Updates to the Flu Immunisation elearning programme for the 2021/22 flu season • Flu Immunisation programme - elearning • Foundation elearning programme update September 2021 • Virtual wards enabled by technology - elearning for healthcare (e-lfh.org.uk) • The Fit Note - elearning for healthcare (createsend1.com) • Eating disorders training for health and care staff - elearning for healthcare (createsend1.com)
YouTube	<ul style="list-style-type: none"> • NHS England • Black Country Healthcare - YouTube
Blogs/Vlogs	
Area Bulletins	

Continuation of Free Training / Webinars / Meetings / CPD

Podcasts	<ul style="list-style-type: none"> • The Nursing Handover Podcast • Nursing Standard Podcasts • What Makes a Nurse? • The MedicsPro Podcast • Nursing Matters • Welcome to the BJN Podcast • Why we care • EBN podcast • This Is Nursing • Maroon Mindset • Teach me, I'm a Nurse • Past Caring • RCGP eLearning podcast • The BMJ Podcast • Primary Care Network podcasts • The Professional Support Unit's Pandemic Podcast • How can public health nurses help deliver the Healthy Child Programme this winter? • Talking GP • Podcast – Matthew Winn – ICS Incoming.... Primary Care and Community Trusts • NB Hot Topics Podcast • Podcast: Will the rising cost of living be paid for by our health? (healthfdn.org.uk) • Lovegrove on Health - Podcast episode #4 - Skills for Health • Latest podcast episodes from GPnotebook (mailchi.mp) • The Next GenCast on Apple Podcasts • Supporting refugee and migrant health care in England The King's Fund (kingsfund.org.uk)
Research	<ul style="list-style-type: none"> • Science Daily • Multimorbidity / multiple long-term conditions (MLTC) • Results of Research Excellence Framework are published – UKRI • Research England £8 billion investment in England's universities – UKRI
Freebies	<ul style="list-style-type: none"> • Blue Light Card
Other	



Thank you for reading Future Proof Health's weekly news!

If you missed past issues, please click [here](#) to view them

More information can be found on our website, [here](#)

Don't forget to like us on [Facebook](#) & Follow us on [Twitter](#)

