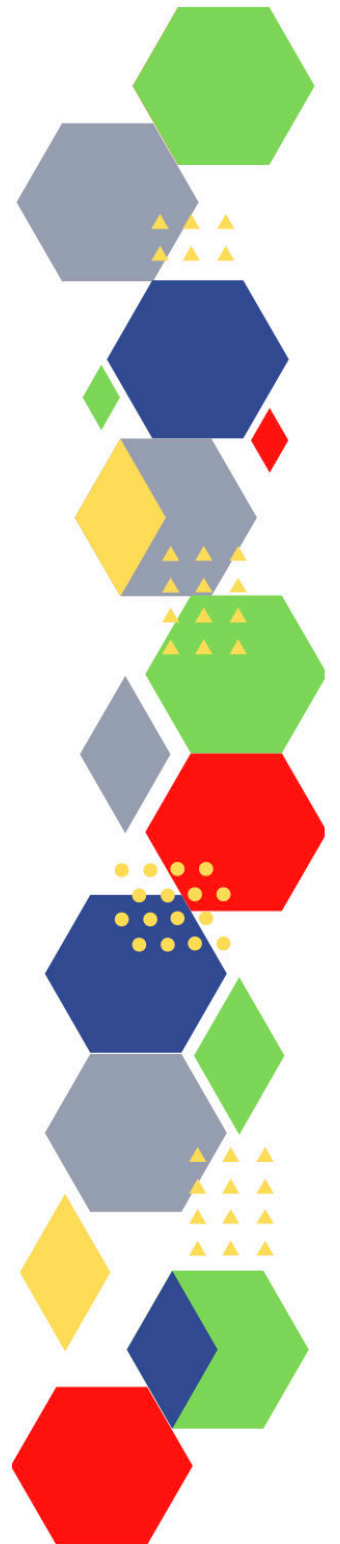
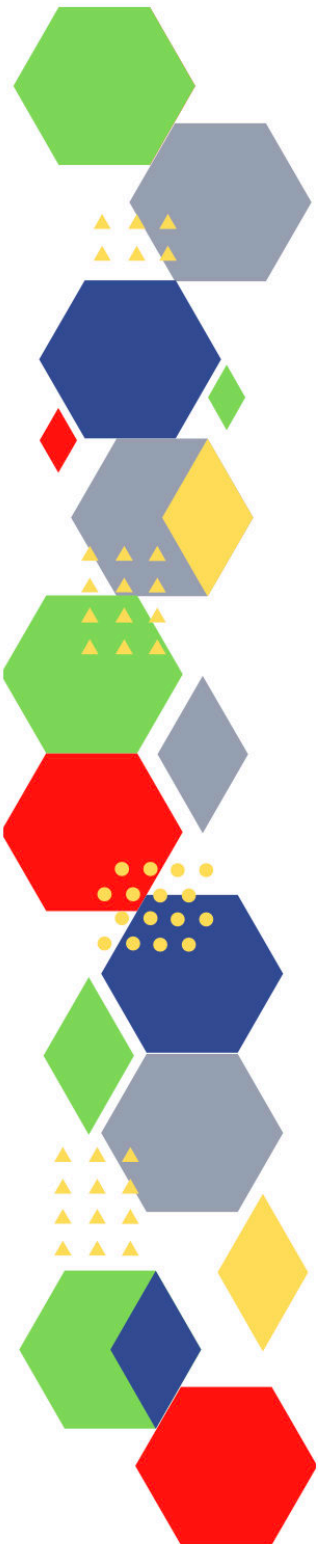




Future Proof Health Presents

Weekly News

23rd March 2023



Communication	
Communication with Patients	<ul style="list-style-type: none"> • Staff respect
Communication within Teams	
Consent / Advocacy / IMCA	
People and Personal Development	
Personal / People Development / Leadership	<ul style="list-style-type: none"> • Accountability and delegation in practice • Leadership for population health (kingsfundmail.org.uk) • The Leading Integration Peer Support Programme: using peer review to strengthen clinical and care professional leadership arrangements within Gloucestershire (kingsfundmail.org.uk) • Enhancing your emotional intelligence • The leader as a coach - building stronger teams • Dealing with difficult situations - courageous conversations
NHS Employers / HR / NHS Pension	<ul style="list-style-type: none"> • NHS Employers • Pensions Online
Health, Safety & Security	
	<ul style="list-style-type: none"> • NPSA • Control of Substances Hazardous to Health (COSHH)
Gov UK - NHS	<ul style="list-style-type: none"> • The Alternative Provider Medical Services (Amendment) Directions 2023 (publishing.service.gov.uk)
CQC	<ul style="list-style-type: none"> • GP mythbusters • YouTube - Care Quality Commission • How the NHS Staffing Crisis Could Affect Your Practice's CQC Rating – Ridouts Solicitors (ridout-law.com) • New publication: Smiling matters 2023 (govdelivery.com)

<p>Vaccines / Medications / Prescribing</p>	<ul style="list-style-type: none"> • Protocol for ordering, storing and handling vaccines • A Competency Framework for all Prescribers • Non-medical prescribing • The Human Medicines Regulations 2012 • RCN - Non-medical prescribers • Royal Pharmaceutical Society • Standards for prescribing • Clinical Negligence Scheme for General Practice • Home - electronic medicines compendium (emc) • Drug shortages - live tracker MIMS online • Polypharmacy learning workshops, planned throughout the year, from April 2023 NHS England » Pharmacy Manual • NHS prescription charges from 1 April 2023 - GOV.UK (www.gov.uk) • Pholcodine-containing cough and cold medicines: withdrawal from UK market as a precautionary measure - GOV.UK (www.gov.uk) • How can integrated care systems make the best use of medicines optimisation and pharmacy services? (kingsfundmail.org.uk) • NHS England » Assurance of aseptic preparation of medicines
<p>MIMS</p>	<ul style="list-style-type: none"> • Prescribing Update • All new products 2023 » (mims.co.uk) • Drug shortages - live tracker (mims.co.uk) • Women's health (mims.co.uk) • Dramatic increase in ADHD prescribing (mims.co.uk) • Some cough and cold medicines withdrawn 'as precautionary measure' (mims.co.uk) • Dry eye treatments (outlook.com) • Ophthalmic preparations, preservatives and potential sensitisers as ingredients (outlook.com) • Insulin preparations (outlook.com) • Hayfever treatments (outlook.com) • Migraine treatments and prophylactics (outlook.com)
<p>Antibiotic steward-ship / Anti-microbial resistance</p>	
<p>Health Protection Review</p>	

Drug / Device Alerts (MHRA)	<ul style="list-style-type: none"> • Drug Safety Update (mhradrugsafety.org.uk) • Pholcodine-containing cough and cold medicines: withdrawal from UK market as a precautionary measure - GOV.UK (www.gov.uk) • Drug Safety Update (mhradrugsafety.org.uk)
Emergency Situations	<ul style="list-style-type: none"> • Resuscitation Council UK
Infection Control / Infection Statics	<ul style="list-style-type: none"> • NHS England » National infection prevention and control • NHS England » NHS clinical waste strategy
Safe Guarding	<ul style="list-style-type: none"> • Female genital mutilation (FGM) • PREVENT • Child protection system in the UK • Safeguarding Adults • Safeguarding children: detailed information • Domestic abuse victim services, England and Wales: 2022 (www.gov.uk) • Dudley Financial Abuse Alliance - September 2022 (govdelivery.com) • Wolverhampton Safeguarding Together • Formal support needs of adult victim-survivors of sexual violence (outlook.com)
Practice Policies: Practice Management / Accountability Duty of Candour	
Audit	
Information Governance / Record Keeping	
Quality & Service Improvement	
Quality, Service & Improvement	<ul style="list-style-type: none"> • The PRSB • General Practice Assessment Questionnaire (GPAQ) • Healthwatch • NHS Five Year Forward View • General Practice Forward View • NMC • Dr Jon Griffiths Blog • NHS Confed • Health Quality Improvement Partnership • Training the future GP: enhancing delivery of GP specialty training (kingsfundmail.org.uk) • Patient experience winter survey: March 2023 (kingsfundmail.org.uk) • Public health annual report 2023: supporting communities in difficult times (kingsfundmail.org.uk)

<p>Roles in General Practice Including AHP / ARRS</p>	<ul style="list-style-type: none"> • Standards for nursing associates • GP mythbuster 57: Health Care Assistants in General Practice • NHS England » Allied Health Professions • Physician Associate Podcast! - Stream on Spotify here (outlook.com) Stream on Apple Podcasts here (outlook.com) • How to prepare for your Interview (PA) • Top Tips for Physician Associates in Primary Care - YouTube • 28 March, 10.30am - 4pm. Celebrating Six Years of Nursing Associates (NA) and the difference they make in delivering patient care • 29 March, 1pm – 2.30pm. Health and Wellbeing Coach - share and learn webinar • Advanced nurse practitioner role becomes part of ARRS scheme (cogora.com) • Making the most of the ARRS roles in your practice and PCN • Personalised Care on Twitter: "Happy #SocialPrescribingDay to all! @JamesCSanderson, Director of Community Health Services @NHSEngland explains what social prescribing represents and what this day is all about! https://t.co/8OzZ2be9Al" / Twitter • SocialPrescriberPlus Programme • This video explains what social prescribing represents and what this day is all about (createsend1.com) • NHS England » Addressing health inequalities in Slough through social prescribing
<p>Revalidation</p>	
<p>Personal Practice & Development</p>	
<p>Practice Management</p>	<ul style="list-style-type: none"> • Institute of General Practice Management • Practice Index
<p>EMIS / System One / IT</p>	
<p>Recruitment Employment / Retirement / Legacy Nursing</p>	<ul style="list-style-type: none"> • The NHS workforce in England - House of Commons Library (parliament.uk) • NHS has teamed up with Inspiring the Future to inspire children to consider a career in the healthcare service (createsend1.com) • register and commit to a minimum of an hour a year to go into schools and colleges – in person or virtually, to inspire the NHS workforce of the future (createsend1.com)
<p>NHS Staff Self Care & Resilience</p>	<ul style="list-style-type: none"> • Samaritans • Mental Health at work • Calm • Supporting our NHS people • The Hub :: Black Country Healthcare NHS Foundation Trust • Leading well for staff health and wellbeing in the NHS (kingsfundmail.org.uk) • NHS employee suicide: a postvention toolkit to help manage the impact and provide support (kingsfundmail.org.uk) • Exploring mental health at work • NHS employee suicide NHS Confederation

Supporting International Recruitment in the NHS	
Practice Transformation / Innovation Agency	<ul style="list-style-type: none"> • NHS Providers • NHS England » World-leading NHS virtual wards treat 100,000 patients in a year
Future of NHS / General Practice / NHS Recovery	<ul style="list-style-type: none"> • NHS England • NHS England » Primary care • NHS mandate 2022 to 2023 • Changes to NHS budget • Register with a GP Surgery • Press release CIPFA publishes interesting care report • No more sticking plasters: repairing and transforming the NHS estate (nhsproviders.org) • NHS Staff Survey (outlook.com) • Fit for the future: GP pressures 2023 (kingsfundmail.org.uk) • Pandemic preparedness for the real world: why we must invest in equitable, ethical and effective approaches to help prepare for the next pandemic (kingsfundmail.org.uk) • Going swimmingly or treading water: is the elective recovery plan bringing down NHS waiting lists? (kingsfundmail.org.uk) • Productivity of the English National Health Service: 2020/21 update (kingsfundmail.org.uk) • CQC boss outlines way out of health and social care 'gridlock' (kingsfundmail.org.uk) • Trusts forced to take radical steps to support GP services (kingsfundmail.org.uk) • 30% cut to ICB staffing budgets (kingsfundmail.org.uk) • Quality in a system under stress The King's Fund (kingsfund.org.uk) • NHS England » General practice pay transparency: guidance • Future of general practice (rcgp.org.uk)
NHS Resolution	
NHS 75	<ul style="list-style-type: none"> • Parkrun for the NHS (outlook.com) • NHS 75 comms toolkit • NHS England » Schools talks to mark NHS's 75th anniversary
ICS / ICB / ICP / PCN Commissioning	<ul style="list-style-type: none"> • NHS England » Integrated care • Maximising the benefits of research: guidance for integrated care systems (kingsfundmail.org.uk) • The evolution of provider collaboration (kingsfundmail.org.uk) • Case studies to support integrated care systems to adopt and spread innovation (kingsfundmail.org.uk) • Supporting clinical leadership in virtual wards: a guide for integrated care system clinical leaders (kingsfundmail.org.uk) • Making health for all policies: harnessing the co-benefits of health (kingsfundmail.org.uk) • Thirty-five ICSs publish first 'integrated care strategies' (kingsfundmail.org.uk) • National network for ICB Chief Nurses announced (kingsfundmail.org.uk) • How ICBs can help people die at home (kingsfundmail.org.uk) • Revealed: £6bn deficit in first cut ICS plans (kingsfundmail.org.uk) • How can ICSs support young people's health? (kingsfundmail.org.uk)

<p>QOF / PHOF / DES / LES / NHS Contract / CQRS / CQUIN</p>	<ul style="list-style-type: none"> • Snomed Codes • NHS Standard Contract 2023/24 full length (england.nhs.uk) • NHS Standard Contract 2023/24 shorter-form (england.nhs.uk) • NHS Standard Contract 2023/24 technical guidance (england.nhs.uk) • NHS Standard Contract 2023/24 sub-contracts (england.nhs.uk) • NHS Standard Contract 2023/24 variation guidance and templates (england.nhs.uk) • Response to consultation feedback (england.nhs.uk)
<p>Leadership / Innovation</p>	
<p>NHS Confederation</p>	<ul style="list-style-type: none"> • NHS Confederation
<p>Greener NHS</p>	<ul style="list-style-type: none"> • Greener Allied Health Professional hub (england.nhs.uk) • High quality, low-carbon respiratory care • Supporting patients with inhaler choices
<p>Personalised Care</p>	
<p>Personalised Care / Self Care / Social Prescribing / Health Coaching</p>	<ul style="list-style-type: none"> • Self Care forum • Personalised Care Institute • Personalised care • Social Prescribing Academy • Event launch Community-led approaches to health and wellbeing (kingsfundmail.org.uk) • Self Care Forum Newsletter (mailchi.mp)
<p>Group consultation</p>	
<p>Working Differently</p>	
<p>Shared Decision Making</p>	<ul style="list-style-type: none"> • Personalised Care Institute

Equality & Diversity	
Equality & Diversity	<ul style="list-style-type: none"> • Public Health Profiles • Home page - NHS - Race and Health ObservatoryNHS – Race and Health Observatory (nhsrhc.org) • Improving health and care- Learn more (nhsrhc.org) • Empowering Vulnerable Communities Learn more (nhsrhc.org) • Innovating for all- Learn more (nhsrhc.org) • Creating equitable environments Learn more (nhsrhc.org) • Collaborating globally -Learn more (nhsrhc.org) • Racism is the root cause of ethnic inequalities in health (kingsfundmail.org.uk) • Tackling inequality and disadvantage: key actions policy makers, commissioners and provider organisations can take when developing an approach with a digital component (kingsfundmail.org.uk) • Patients in England not collecting NHS prescriptions because of cost, (kingsfundmail.org.uk) • British Muslims had difficulties accessing appropriate palliative care during pandemic (cogora.com) • Racism is the root cause of ethnic inequalities in health - Race Equality Foundation
Inclusion Health	<ul style="list-style-type: none"> • Health Creation Academic Network • Inequality on the inside
Poverty / Homelessness	<ul style="list-style-type: none"> • Crisis • This is Poverty • Tackling poverty and the cost of food (kingsfundmail.org.uk) • The cost of poor housing by tenure in England (kingsfundmail.org.uk)
Population Health / Health Communities	<ul style="list-style-type: none"> • short course on working with people and communities (createsend1.com) • 28 March, 10am – 11am. New statutory guidance on working with people and communities • Event launch Community-led approaches to health and wellbeing (kingsfundmail.org.uk) • Leadership for population health (kingsfundmail.org.uk)
Thrive Into Work	<ul style="list-style-type: none"> • Thrive into Work • Thrive into Work Referral form
Health Inequalities	<ul style="list-style-type: none"> • NHS News • Health inequalities – from evidence to action • NHS England » Addressing health inequalities in Slough through social prescribing • £1.6m to support combined authorities to level up health across regions in England

Trans / Non-binary Health / LGBTQ+	<ul style="list-style-type: none"> • LGBT Foundation • Surgery staff grab sheet (squarespace.com) • Trans inclusive organisations – TransActual • TransActual - Healthcare • CliniQ
Migrant / Refugee Health	<ul style="list-style-type: none"> • THE REFUGEE & MIGRANT CENTRE • Homelessness management information – Ukrainian nationals: England (outlook.com)
Traveller / Gypsy / Romany Health	<ul style="list-style-type: none"> • Gypsy Roma and Traveller History and Culture The Traveller Movement • Friends, Families and Travellers (gypsy-traveller.org)
Veterans Health	<ul style="list-style-type: none"> • The first call for help takes courage
Voluntary / Charity	
Management of Emergency Situations	
Management of Emergency Situations	
111 / Emergency Care	
First Contact	<ul style="list-style-type: none"> • Supporting general practice – Common pitfalls • Paediatrics for Primary Care (and anyone else) (gppaedstips.blogspot.com)
Red Flags	
Sepsis	<ul style="list-style-type: none"> • Sepsis: recognition, diagnosis and early management • Sepsis guidance implementation advice for adults • Sepsis in Children • Sepsis Trust • quick SEPSIS RELATED ORGAN FAILURE ASSESSMENT • 23 March, 12.30pm – 1.45pm. Sepsis in primary care
Therapeutic Monitoring	
OSCE	<ul style="list-style-type: none"> • Geeky Medics • Abdominal Examination - Demonstration - YouTube • Cardiovascular Examination - Demonstration - YouTube • Respiratory Examination - Demonstration - YouTube • Physical Diagnosis Skills - University of Washington School of Medicine

Role Specific	
Cervical Cytology	<ul style="list-style-type: none"> • Guide to the interim assessment • British Association for Cytopathology • Lab Tests Online
Ear Care	<ul style="list-style-type: none"> • Ear Care Centre • RNID • Ear wax removal: inequities in access (practicenursing.com) - may need log in
Wound Management / Compression	<ul style="list-style-type: none"> • Microworld • Tissue Viability Society • The BLS • My Microworld Online • JWC Masterclass on Cellular, acellular and matrix-like products
Minor Surgery	
Obtaining Samples / Results	<ul style="list-style-type: none"> • Lab Tests Online
Health Promotion / Health Screening	
Health Promotion / Population Health	<ul style="list-style-type: none"> • Better Health • SHAPE Strategic Health Asset Planning and Evaluation (shapeatlas.net)
Health Screening	<ul style="list-style-type: none"> • PHE Screening • Cervical screening: quarterly coverage data reports 2022 - GOV.UK (www.gov.uk)
PHE / OHID / UKHSA	<ul style="list-style-type: none"> • Knowledge & Library Services • Campaign Resources • Public Health Profiles • Health Publications • Health Profile for England 2021 • English indices of deprivation 2019 • Statistics at OHID (outlook.com) • Public health ring-fenced grant 2023 to 2024: local authority circular - GOV.UK (www.gov.uk) • Public service productivity, healthcare, England: financial year ending 2021 (outlook.com) • Public Health Outcomes Framework: March 2023 data update (outlook.com) • Experts call for new, people-centred strategy to prepare for next pandemic - Institute of Development Studies (ids.ac.uk)
NHS Health Check	<ul style="list-style-type: none"> • NHS Health Check • NHS Health Check quarterly statistics: October to December 2022 offers and uptake - GOV.UK (outlook.com)

<p>UK GOV Flu / Covid / Bird Flu / Monkey Pox</p>	<ul style="list-style-type: none"> • v Bird flu (avian influenza): cases in wild birds - GOV.UK (outlook.com) • Coronavirus (COVID-19) vaccines adverse reactions - GOV.UK (outlook.com) • National flu and COVID-19 surveillance reports: 2022 to 2023 season (outlook.com) • NHS COVID-19 app statistics - GOV.UK (outlook.com) • Coronavirus (COVID-19) Infection Survey, UK: 10 March 2023 - GOV.UK (outlook.com) • Investigation of SARS-CoV-2 variants: technical briefings (outlook.com) • Symptoms reported in those testing negative for COVID-19 in England: Coronavirus (COVID-19) Infection Survey, UK: 8 March 2023 (outlook.com) • Bird flu (avian influenza): findings in non-avian wildlife (outlook.com) • HAIRS risk assessment: SARS-CoV-2 in UK cervid populations (outlook.com) • Coronavirus (Covid-19) infection survey, UK: 10 March 2023, Office for National Statistics, 10 March 2023 (kingsfundmail.org.uk) • Covid-19 antibody and swab positivity by population characteristics in the UK: 8 August to 4 September 2022 (kingsfundmail.org.uk) • National flu and Covid-19 surveillance report: 16 March 2023 (week 11), UK Health Security Agency, 16 March 2023 (kingsfundmail.org.uk) • National flu and Covid-19 surveillance report: 9 March 2023 (week 10), UK Health Security Agency, 10 March 2023 (kingsfundmail.org.uk) • Coronavirus (Covid-19) infection survey, UK: 16 March 2023, Office for National Statistics, 16 March 2023 (kingsfundmail.org.uk)
<p>UK GOV - General Practice / Primary Care</p>	<ul style="list-style-type: none"> • 2-hour Urgent Community Response Performance metrics for January 2022 (provisional), and December 2022 (final) - GOV.UK (outlook.com) • GP out-of-hours syndromic surveillance: weekly bulletins for 2023 (outlook.com) • GP in-hours: weekly bulletins for 2023 - GOV.UK (www.gov.uk) • NHS Continuing Healthcare and NHS-funded Nursing Care for Q3 2022/23 - GOV.UK (kingsfundmail.org.uk)
<p>UK GOV Deaths / Suicide / Palliative Care / Mortality / End of Life</p>	<ul style="list-style-type: none"> • Sociodemographic inequalities in suicides in England and Wales: 2011 to 2021 (outlook.com) • Deaths registered weekly in England and Wales, provisional: week ending 24 February 2023 (outlook.com) • Summary Hospital-level Mortality Indicator (SHMI), Deaths associated with hospitalisation, England, November 2021 – October 2022 (outlook.com) • Mortality Profile: March 2023 (outlook.com) • Excess deaths in England and Wales: March 2020 to December 2022 (outlook.com) • Mortality Profile: March 2023 (outlook.com) • Excess deaths in England and Wales: March 2020 to December 2022 (outlook.com) • Mortality Profile: March 2023 (outlook.com) • An in-depth review of fire-related fatalities and severe casualties in England, 2010 to 2018/19 - GOV.UK (outlook.com) • Excess deaths in England and Wales: March 2020 to December 2022 (outlook.com)

UK GOV - Secondary Care	<ul style="list-style-type: none"> • Integrated Urgent Care Aggregate Data Collection (IUC ADC) for January 2023 (Official statistics) (outlook.com) • Provisional Accident and Emergency Quality Indicators for England, January 2023, by provider (outlook.com) • Referrals for first consultant-led outpatient appointments for January 2023 - GOV.UK (outlook.com) • Provisional Monthly Hospital Episode Statistics for Admitted Patient Care, Outpatient and Accident and Emergency data, April 2022 - January 2023 - GOV.UK (outlook.com)
UK GOV - LTC - including cancer	<ul style="list-style-type: none"> • Waiting times for suspected and diagnosed cancer patients for January 2023 (outlook.com) • Hepatitis C in England and the UK (outlook.com) • Musculoskeletal health local profiles: March 2023 update (outlook.com) • Interactive Health Atlas of Lung conditions in England (INHALE): March 2023 update (outlook.com)
Surveillance / Syndromic Surveillance	<ul style="list-style-type: none"> • GP out-of-hours syndromic surveillance: weekly bulletins for 2023 (outlook.com) • Syndromic surveillance: weekly summaries for 2023 (outlook.com) • Weekly all-cause mortality surveillance: 2022 to 2023 (outlook.com) • Syndromic surveillance: systems and analyses
Ambulance / Remote Health / 111 / Urgent Care / A&E	<ul style="list-style-type: none"> • Ambulance Quality Indicators Clinical Outcomes for October 2022 (outlook.com) • A&E attendances and emergency admissions for February 2023 (outlook.com) • Ambulance Quality Indicators Systems Indicators for February 2023 (outlook.com) • National ambulance syndromic surveillance: weekly bulletins 2023 (outlook.com) • Remote health advice: weekly bulletins for 2023 (outlook.com)
UK GOV - Mental Health / Learning Difficulties	<ul style="list-style-type: none"> • Psychological Therapies: reports on the use of IAPT services, England, December 2022 Final including a report on the IAPT Employment Advisers pilot (outlook.com) • Out of Area Placements in Mental Health Services, December 2022 - GOV.UK (outlook.com) • Autism Statistics, January to December 2022 - GOV.UK (outlook.com) • Mental health, current and upcoming work: March 2023 (outlook.com) • Mental Health Services Monthly Statistics, Performance December 2022, Provisional January 2023 (outlook.com) • The geographic divide in health, disability, and unpaid care: Census 2021 - GOV.UK (outlook.com) • NHS England » Supporting people with a learning disability and autistic people to live happier, healthier, longer lives: bitesize guide for local systems

<p>UK GOV Infectious Disease Monitoring / NOIDS</p>	<ul style="list-style-type: none"> • Notifiable diseases: weekly reports for 2023 - GOV.UK (outlook.com) • Notifiable diseases: weekly reports for 2023 (outlook.com) • Notifiable diseases: last 52 weeks - GOV.UK (outlook.com) • Notifiable diseases causative agents: week 11 (week ending 19 March 2023) (kingsfundmail.org.uk) • Sentinel surveillance of blood borne virus testing in England: 2021 (outlook.com) • Notifiable diseases: causative agents reports for 2023 (outlook.com) • National norovirus and rotavirus surveillance reports: 2022 to 2023 season (outlook.com) • Group A streptococcal infections: 11th update on seasonal activity in England (kingsfundmail.org.uk) • Notifiable diseases causative agents: week 10 (week ending 12 March 2023) (kingsfundmail.org.uk)
<p>Addiction/Smoking</p>	<ul style="list-style-type: none"> • Drink Coach • Stop smoking interventions and services • Talk to Frank • Statistics on NHS Stop Smoking Services in England April 2022 to June 2022 (outlook.com) • Local Alcohol Profiles for England (LAPE): March 2023 update (outlook.com) • Nitrous oxide: updated harms assessment (outlook.com) • NHS England » Optimising personalised care for adults prescribed medicines associated with dependence or withdrawal symptoms
<p>Immunisation / Travel Health</p>	
<ul style="list-style-type: none"> • Joint Committee on Vaccination and Immunisation • Immunisation against infectious disease • West Midlands Immunisation Service • Vaccination of individuals with uncertain or incomplete immunisation status • Immunisation Queries: Immunisation information for Health Care Services within the West Midlands area • Immunisation • Herpes zoster (shingles) immunisation programme 2022 to 2023: evaluation reports - GOV.UK (outlook.com) • Spring 2023 COVID-19 vaccination programme: JCVI advice, 22 February 2023 (outlook.com) 	

Flu	<ul style="list-style-type: none"> • Flu and flu vaccinations • The national influenza immunisation programme 2021 to 2022 • Flu vaccines for the 2021 to 2022 season poster • Appendix C: Flu vaccinator competency assessment tool • Healthcare assistants and flu vaccinations
Covid Vaccine	<ul style="list-style-type: none"> • Greenbook COVID-19 chapter 14a • COVID-19 Vaccine Moderna e-learning now available • GP COVID-19 vaccine dashboard • Updates made to the COVID-19 vaccination learning programme • Covid-19 vaccine surveillance report: 2 March 2023 (week 9), UK Health Security Agency, 2 March 2023 (kingsfundmail.org.uk) • Coronavirus and vaccination rates in people aged 18 years and over by socio-demographic characteristic, region and local authority, England: March 2023 (outlook.com) • First and second Covid-19 vaccine offer to end in June (cogora.com)
Children	<ul style="list-style-type: none"> • Child Health Information Services Local Government Association • Childhood vaccines: parental attitudes survey 2022 findings • Child imms - QOF (outlook.com) – sign in needed • The PIP Talks - Diphtheria and Pertussis • The PIP Talks - Haemophilus influenzae type B and Polio • Rotavirus and hepatitis B • Meningococcal and pneumococcal disease • Communication and vaccine confidence • Measles, mumps and rubella • Public Health & Immunisations (outlook.com)-MAY NEED TO REGISTER
Adults	<ul style="list-style-type: none"> • Immunisation patient group direction (PGD) templates • Shingles immunisation programme: introduction of Shingrix® letter
Vaccine Update	<ul style="list-style-type: none"> • Vaccine update: issue 332, October 2022, flu special edition - GOV.UK (www.gov.uk) • Vaccine update: issue 333, December 2022 - GOV.UK (www.gov.uk) • Vaccine update: issue 334, January 2023 (outlook.com) • Vaccine update: issue 335, February 2023 (outlook.com)
PGD	

Travel Health	<ul style="list-style-type: none"> • Travel Health Pro • Fit for Travel • Travel Health • Jane Chiodini • Corona.Help • Traveller advice resources • Country-specific schistosomiasis risk and recommendations 2023
Mental Health / Learning Disability / Disability	
Mental Health	<ul style="list-style-type: none"> • Mental Health • Mental Health UK • Mind • Place2b • Rethink Mental Illness • Young Minds • Every Mind Matters • Calm • Headspace • Better Health - Every Mind Matters - Resources • ZSA Training • NHS > Mental Health
Learning Disability	<ul style="list-style-type: none"> • Learning Disabilities • Learning Disability England • Mencap • Bild • Autism • NHS England » Supporting people with a learning disability and autistic people to live happier, healthier, longer lives: bitesize guide for local systems • Supporting people with a learning disability and autistic people to live happier, healthier, longer lives: bitesize guide for local systems (kingsfundmail.org.uk)
Disability (Inc. hearing and visual)	<ul style="list-style-type: none"> • Disability Rights UK • Disability Matters • RNID - National hearing loss charity • Spokzpeople • Sight Loss Data Tool RNIB

From Cradle to...

<p>Infant Health</p>	<ul style="list-style-type: none"> • Tommys • First Steps Nutrition Trust • Bliss • ICON Toolkit • Sandwell - BC - ICB Primary Care - 7 minute briefing • NHS England » What to do if the newborn blood spot failsafe solution (NBSFS) is unavailable
<p>Child Health</p>	<ul style="list-style-type: none"> • Unicef • Health Professional Academy • Premature Babies • Child and Maternal Health • Women and Child First • Child Health Information Services • Place2b • Childhood eczema • Childhood asthma • Paediatrics for Primary Care (and anyone else) (gppaedstips.blogspot.com) • Barnardos • Childrens Society • Action for Children • Health visitor service delivery metrics experimental statistics: quarterly data for 2022 to 2023 - GOV.UK (outlook.com) • Ten years of Supporting Families: Supporting Families programme annual report 2022-23 - GOV.UK (outlook.com) • Childrens-Mental-Health-Services-2021-2022-1.pdf (childrenscommissioner.gov.uk) • Health visitors and school nurses call for 'urgent uplift' to public health funding Nursing in Practice (cogora.com) • How can ICSs support young people's health? (kingsfundmail.org.uk) • 2023 Child health profiles (outlook.com)
<p>Adolescent Health</p>	<ul style="list-style-type: none"> • Adolescent Health Programme • Society for Adolescent Health and Medicine • Young Minds

<p>Mens Health</p>	<ul style="list-style-type: none"> • Mens Health Forum • Mens Health Month • Mens health.org • Mens Health UK • Men and mental health • Men's Mental Health Awareness • Prostate Cancer UK • Orchid Fighting Male Cancer • Prostate Cancer UK Facebook Page • Movember
<p>Women's Health</p>	<ul style="list-style-type: none"> • Womens Health Concern • Well Being of Women • Coppa Feel • Menopause Matters • The Menopause Charity • Royal College of Obstetricians and Gynaecologists - Guidelines • Pelvic Partnership • CRUK - Womens Cancer • Breast Cancer Now • Foundation for Women's Cancer • Eve Appeal • Ovarian.Org • Jo's Trust • Well Spring • Know your Lemons • British Menopause Society - www.thebms.org.uk • NHS - www.nhs.uk/conditions/menopause • Henpicked - henpicked.net • The Menopause Exchange - www.menopause-exchange.co.uk • Women's Health Concerns - www.womens-health-concern.org • Menopause Matters - www.menopausematters.co.uk • The Daisy Network - www.daisynetwork.org • Dr Louise Newson's Menopause Doctor - www.menopausedoctor.co.uk • Manage My Menopause - www.managemymenopause.co.uk/menopause-advice • Menopause Support - menopausesupport.co.uk • Bourne2Care • Home Primary Care Women's Health Forum (pcwhf.co.uk) • Supporting patients with Endometriosis (nursinginpractice365.uk) MAY NEED TO LOG IN • Menopause Awareness – elearning for healthcare (e-lfh.org.uk) • Testosterone replacement in menopause

<p><i>Women's health continued</i></p>	<ul style="list-style-type: none"> • Janice Rymer – Head of the clinical reference group for the National Menopause Programme • Anne Connolly – GPSI gynae, Primary Care Women's Health Forum Chair • Dr Zoe Schaedel – GP and menopause specialist • v Katie Michala – Senior Programme Officer for the health and wellbeing programme, NHS Employers. • Rachel Suff – Senior Policy Adviser, Employment Relations at CIPD • Shereen Pavaday – Senior Evidence and Policy Lead, representing EDI • Hilary Winch – Chair of NHS Health at Work Network. Head of Workplace Health, Safety & Wellbeing, Norfolk & Norwich University Hospitals NHS Foundation Trust • Jane Galloway – Head of Flexible Working at NHSE, founder of Quiet the Hive • Dr Pete Smith – Co-Chair of the Self Care Forum, Hon Senior Research Officer at Imperial College, Self-Care Academic Research Unit • Shriti Pattani – President, Society of Occupational Medicine • Melanie Kershaw – Senior Manager, personalised care, NHSE • Claire Gore – Director of the Future of HR and OD Programme, NHSE • Prof June Keeling – Professor of Women's Health, Keele University • Louise Murray – Programme Lead, Health and Wellbeing programme at NHS Employers • Laura Flatman – Retention Lead, NHSE • Laura Hanton – Senior Strategic Communications, NHSE • Siobhan Woodland – Health & Wellbeing Manager, NHSE • Deborah Garlick – CEO of Henpicked: Menopause in the Workplace. • Sarah Case – The Thought Path • Behaviour Insights Team • Genetic study reveals clues for better treatment of endometriosis (cogora.com)
<p>The Older Population</p>	<ul style="list-style-type: none"> • BGS • Ageing Better • Delirium Champions - YouTube • Joining the dots: A blueprint for preventing and managing frailty in older people British Geriatrics Society (bgs.org.uk)
<p>Carers / Social Care / Care Homes</p>	<ul style="list-style-type: none"> • The Care Provider Alliance • Skills for Care • The Care Workers' Charity • Supporting Adult Carers • The Care UK • County Councils Network • BREAKING NEWS from The Carer (ourmailsender4.com) • BREAKING NEWS from The Carer (ourmailsender4.com) • The Carer: Read The Latest Issue Online Today! (ourmailsender4.com) • BREAKING NEWS from The Carer (ourmailsender4.com)
<p>Young Carers</p>	

Family Planning & Sexual Health

Family Planning	<ul style="list-style-type: none"> • Faculty of Sexual and Reproductive Healthcare Education and Training • New MIMS table comparing emergency hormonal contraceptives • Emergency hormonal contraceptives (mims.co.uk) • Contraceptives, oral and transdermal preparations (mims.co.uk) • Levonorgestrel-releasing intrauterine systems (IUS) (mims.co.uk) • Switching to and between combined hormonal contraception (mims.co.uk) • Initiating combined hormonal contraception (mims.co.uk) • Long-Acting Reversible Contraception (LARC) (NICE Guideline) (mims.co.uk) • New MIMS table comparing emergency hormonal contraceptives • Pharmacists to initiate oral contraceptives in NHS pilot (mims.co.uk) • Combined contraceptives (mims.co.uk) • Contraceptive devices (mims.co.uk) • Depot contraceptives (mims.co.uk) • Emergency contraceptives (mims.co.uk) • How to complete a safe and effective contraceptive consultation (practicenursing.com) - may need a log in
Reproductive	<ul style="list-style-type: none"> • Tommys
Sexual Health / Sexual Abuse	<ul style="list-style-type: none"> • Sexual and Reproductive Health Profiles • FSRH Education & Training
Maternity / Neonate health	<ul style="list-style-type: none"> • New care hubs to help manage health problems during pregnancy (cogora.com) • Families with vulnerable infants need better sleep support advice (cogora.com)
Care of Patients with Long Term Conditions	
LTC	<ul style="list-style-type: none"> • Physical Activity for the Prevention and Management of Long-Term Conditions • Health A to Z

Continuation of Long Term Conditions

<p>Diabetes & Pre-Diabetes</p>	<ul style="list-style-type: none"> • Mumoactive • The mySugr App • PCDS Entry level module series - Foot Check • Type 2 diabetes in adults: management • DiabetesontheNet Online diabetes journals, education and resources for healthcare professionals. • Healthy Living • Diabetes and Ramadan Fasting Diabetes UK • Tuesday 23 May - 1pm-3pm: Diabetes → (chronicconditions.co.uk) • Focus on: Ramadan GPnotebook Resources • NICE now recommends taking a risk-based approach to T2D management. • FREE - NEW: Diabetes in Children (outlook.com) - MAY NEED SIGN IN • Ramadan Compendium • Advising patients with existing conditions about fasting during Ramadan • Managing Diabetes during Ramadan • Ramadan - implications for patients with type 2 diabetes • Managing chronic kidney disease, diabetes and coronary artery disease (practicenursing.com) - may need login
<p>Respiratory</p>	<ul style="list-style-type: none"> • Spirometry: step by step • ARTP • British Lung Foundation • The Primary Care Respiratory Society • Respiratory – Respimat® patient resources Boehringer Ingelheim (boehringer-ingelheim.com) • Respiratory News & Advice (nursinginpractice.com) • Dudley pulmonary rehab - Template PI (dgft.nhs.uk) • Friday 12 May - 1pm-3pm: Respiratory → (chronicconditions.co.uk) • REGISTER HERE for Take a BREATH! – COPD: Assessment and Management (outlook.com) PART 1 – Take a BREATH! – COPD: Assessment and Management • Nursing in Practice - Respiratory - MAY NEED TO REGISTER • Independent Nurse - New dashboard launched to help reduce CO2 emissions from inhalers • Interactive Health Atlas of Lung conditions in England (INHALE): March 2023 update (outlook.com) • Smart Rescue Intro
<p>COPD</p>	<ul style="list-style-type: none"> • Right Breathe • GOLD COPD 2022 strategy Independent professional body guideline Guidelines
<p>Asthma</p>	<ul style="list-style-type: none"> • Asthma UK • Asthma: diagnosis, monitoring and chronic asthma management • Global Initiative for Asthma • British guideline on the diagnosis and pharmacological management of asthma in children • British Thoracic Society guidelines for home oxygen use in adults: accredited by NICE • SIGN and BTS management of asthma in children guideline Independent professional body guideline Guidelines

Continuation of Long Term Conditions

Hypertension	<ul style="list-style-type: none"> • British Heart Foundation • Blood Pressure UK • Hypertension in adults: diagnosis and management • Hypertension in adults: diagnosis and treatment • Hypertension: symptoms to look out for and treatment options (rcni.com) • Hypertension – what’s new from NICE’s updated guidance? (nursinginpractice365.uk) – MAY NEED TO LOG IN
CVD/AF/DVT	<ul style="list-style-type: none"> • QRISK®3-2018 risk calculator • Heart Rhythm Alliance • CVD risk assessment and management • NHS lipid management pathway NHS guideline Guidelines • Act F.A.S.T – Stroke campaign • Tuesday 16 May - 1pm-3pm: Cardiovascular → (chronicconditions.co.uk) • Taskforce to explore tech role in disease prevention (cogora.com) • In the UK, CVD affects 1 in 3 people with T2D and is a leading cause of death • CVDPREVENT Third Annual Audit Report
Heart Failure	<ul style="list-style-type: none"> • British Heat Foundation • British Society Guidelines • Home - Pumping Marvellous • Heart Failure UK Guidelines • The Courses - HCM Academy (thehcmacademy.com) • REGISTER HERE for ECHO Interpretation and reports made easy (outlook.com) • REGISTER HERE for The breathless patient DEMYSTIFIED (outlook.com)
Chronic Kidney Disease	<ul style="list-style-type: none"> • Kidney.Org • Kidney Quality Improvement Partnership • Friday 19 May - 1pm-3pm: Renal → (chronicconditions.co.uk) • REGISTER HERE for Part 3 Practical case studies in the management of Hyperkalaemia (outlook.com) • GPnotebook focus on renal medicine (contains promotional information) (mailchi.mp)

Continuation of Long Term Conditions

Cancer / Oncology	<ul style="list-style-type: none"> • Surviving Thyroid Cancer • Help Us Help You - Lung Cancer Symptoms • Breast Cancer Now • Macmillian • Bowel Cancer UK • Brain Trust • CRUK • Action Cancer • Foundation for Women's Cancer • NHS England » Cancer • Wednesday 10 May - 1pm-3pm: Oncology → (chronicconditions.co.uk)
Liver Disease	<ul style="list-style-type: none"> • British Liver Trust • Liver Research • BRITISH ASSOCIATION FOR THE STUDY OF THE LIVER • LIVERnORTH • LIVER DISEASE AND CIRRHOSIS • NHS England » NHS on-the-spot liver scans find one in 10 people have liver damage that could lead to deadly cancer
Blood Disorders	<ul style="list-style-type: none"> • Blood Cancer UK • UK Thalassaemia Society • The ITP Support Association • UK-ITP Paediatric ITP Registry • The Haemophilia Society • UK MDS Forum • Pernicious Anaemia Society • Haemochromatosis UK • NHS Blood and Transplant

Continuation of Long Term Conditions

G.I	<ul style="list-style-type: none"> • GIST Cancer UK • Pernicious Anaemia Society • Crohns and Colitis
ENT	
G.U	<ul style="list-style-type: none"> • Overview Urinary tract infections in adults Quality standards NICE
ME / CFS / Fibromyalgia	<ul style="list-style-type: none"> • ME Association • ME Research • Action for M.E • Fibromyalgia Action UK • Fibromyalgia UK • Home - Fibromyalgia Awareness UK (fibroawarenessuk.org) • Fibromyalgia - Symptoms, diagnosis and treatment BMJ Best Practice • Fibromyalgia - The Brain Charity
Neurological Conditions	<ul style="list-style-type: none"> • The Brain Tumour Charity • Narcolepsy.Org • ACNR • MS Society UK Information, research and support Multiple Sclerosis Society UK • Home MS Trust
Musculoskeletal Conditions	<ul style="list-style-type: none"> • Rheumatology • National Axial Spondyloarthritis Society • Musculoskeletal health • Musculoskeletal health: 5 year prevention strategic framework • Faculty of Occupational Medicine • Guide to embedding your first contact physiotherapy service

Continuation of Long Term Conditions

Endocrine Disorders / Metabolic Disorders	<ul style="list-style-type: none"> • Society for Endocrinology • Turner Syndrome Support Society • Thyroid Eye Disease • British Thyroid Foundation • Thyroid UK • The Pituitary Foundation • Addisons Disease • Parathyroid UK • The Royal Osteoporosis Society • Metabolic Support UK
Frailty	<ul style="list-style-type: none"> • Recognising frailty • Identifying frailty • CLINICAL FRAILITY SCALE
Dementia / Alzheimers	<ul style="list-style-type: none"> • Dementia UK • Age UK - Understanding Dementia • Delirium Champions • Alzheimers Society • Poverty is linked to increased dementia risk, regardless of genetics (cogora.com) • Alzheimer's disease, amyloid and ethics (practicenursing.com) - may need a log in • Sector leaders to drive progress on national Dame Barbara Windsor Mission to beat dementia - GOV.UK (www.gov.uk)
Allergy / Auto-immune / Genetic Conditions	<ul style="list-style-type: none"> • Allergy UK • British Society for Rheumatology • Addisons Disease
Obesity	<ul style="list-style-type: none"> • Obesity UK • Home Page - NHS Digital Weight Management Programme Template Site (wmp.nhs.uk) • Thursday 25 May - 1pm-3pm: Obesity → (chronicconditions.co.uk) • World obesity atlas 2023 (kingsfundmail.org.uk)


Continuation of Long Term Conditions

Dermatology	<ul style="list-style-type: none"> • British Association of Dermatologists • Eczema • The British Skin Foundation • Acne vulgaris: management • The Primary Care Dermatology Society • Acne.org • Allergy UK • Urticaria • Hives • Sunburn • Causes of cancer and reducing your risk • What is Rosacea? • Rosecea • The Rosacea Forum • Herpes Viruses Association • Shingles • Fungal Skin Infection - Foot • The Psoriasis Association • National Psoriasis Foundation • Melanoma • Skin Health Information • British Association of Plastic Reconstructive and Aesthetic Surgeons - Procedure Guides • Warts and verrucae • Dermatology • Home - Hyperhidrosis UK • Scabies: an update for nurses (practicenursing.com) - may need a log in
Pain Management	<ul style="list-style-type: none"> • Pain Concern
Osteoporosis / Falls	

<i>Continuation of Long Term Conditions</i>	
Genomics / Genetics	<ul style="list-style-type: none"> • England Rare Diseases Action Plan to tackle health inequalities - GOV.UK (www.gov.uk)
Loneliness	<ul style="list-style-type: none"> • Loneliness (outlook.com) • NHS England » NHS health teams to refer lonely and isolated patients for check in and chat service
Multi-Morbidity / Complex Needs	<ul style="list-style-type: none"> • Multimorbidity • Multimorbidity / multiple long-term conditions (MLTC)
Minor Illness / First Contact Assessment / OSCE	<ul style="list-style-type: none"> • Fact Sheets - Self Care Forum • OSCE Checklists 📄 (mlsend.com) • OSCE Flashcards 🩺 (mlsend.com) • 600+ OSCE Stations ✨ (mlsend.com) • Anatomy Flashcards 🫁 (mlsend.com) • Health A to Z • #EM3: East Midlands Emergency Medicine Educational Media • Nursing In Practice Reference – Apps on Google Play • Nursing In Practice Reference on the App Store (apple.com) • Scabies: an update for nurses (practicenursing.com) – may need a log in
Other / Case Studies	
Winter / Summer Pressures	
End of Life Care	
End of Life Care / Bereavement / Organ Donation	<ul style="list-style-type: none"> • ReSPECT for healthcare professionals • Hospice UK • Palliative and End of Life Care Profiles - OHID (phe.org.uk)

Flu / Covid-19 / Monkeypox	
Covid-19	
Flu	
Long covid	<ul style="list-style-type: none"> • Your Covid Recovery • Long Term Effects of Covid • Post Covid Syndrome - Long Covid • COVID-19 Yorkshire Rehabilitation Screening TOOL • FOM Guidance • Long Covid Toolkit
Monkey Pox	
News & Views	
Digital News / Remote Consultations / AI	<ul style="list-style-type: none"> • Digital Health News Webinars • Digital Health News • NHS Digital • DigiHealthWell • Public Sector Events, Conferences and Training - Inside Government • Digital Transformation • Moving from exclusion to inclusion in digital health and care The King's Fund (kingsfund.org.uk) • Your daily news updates from Digital Health (campaign-archive.com) • Your daily news updates from Digital Health (campaign-archive.com) • Supporting digital inclusion in health care (kingsfundmail.org.uk) • Digital Health Digest (kingsfundmail.org.uk) • NHSE endorses new procurement route to source virtual ward systems (kingsfundmail.org.uk) • Research sets out improved process for using AI technology in social care (kingsfundmail.org.uk) • How patient-collated data is supporting evidence-based care (kingsfundmail.org.uk) • DrDoctor secures £10m in funding to support ICSs and NHS patients (kingsfundmail.org.uk) • High Street giant Boots is taking digital healthcare to the people (kingsfundmail.org.uk) • The Digital Healthcare Show 2023 in partnership with TSA • Your daily news updates from Digital Health (campaign-archive.com) • Your daily news updates from Digital Health (campaign-archive.com) • Your daily news updates from Digital Health (campaign-archive.com) • Your daily news updates from Digital Health (campaign-archive.com)

PSNC News / Pharmacy	<ul style="list-style-type: none"> • National Pharmacy Association • Royal Pharmaceutical Society • Medicines Learning Portal • Specialist Pharmacy Service • PSNC Newsletter: 10th March (mailchi.mp) • Supporting general practice referrals to the NHS Community Pharmacist Consultation Service Help Us Help You - Primary Care Services Campaign Resource Centre (dhsc.gov.uk) • PSNC Newsletter: 13th March (mailchi.mp) • NHS prescription charges from 1 April 2023 - GOV.UK (www.gov.uk) • March 2023 Price Concessions 1st Update (mailchi.mp) • March 2023 Price Concessions 2nd Update (mailchi.mp) • PSNC Newsletter: 20th March • PSNC Newsletter: 15th March (mailchi.mp)
Pulse / GP Online / HSJ / NB Medical / 60 Second GP	<ul style="list-style-type: none"> • GP Online • HSJ • Pulse Today • Practice-changing updates from GPnotebook (mailchi.mp)
Primary Care Update / PCC / PPP	<ul style="list-style-type: none"> • Public Policy Projects News
Proactive Care	
Kings Fund	<ul style="list-style-type: none"> • The Kings Fund • Library services The King's Fund (kingsfund.org.uk) • Event launch Community-led approaches to health and wellbeing (kingsfundmail.org.uk) • Leadership for population health (kingsfundmail.org.uk) • Are you interested? Primary care event tickets still available (kingsfundmail.org.uk) • Health Management and Policy Alert: 14 March 2023 (kingsfundmail.org.uk) • Digital Health Digest (kingsfundmail.org.uk) • Integrated care systems highlights (kingsfundmail.org.uk) • Health Management and Policy Alert: 21 March 2023 (kingsfundmail.org.uk) • The facts behind excess death numbers (kingsfundmail.org.uk)
Health Care Leaders Newsletters	
World Health Organisation	<ul style="list-style-type: none"> • WHO • OpenWHO

IHCT / CCG / STP / Healthier Futures	<ul style="list-style-type: none"> • Black Country & West Birmingham CCG • Dudley Integrated Health and Care • Home :: Black Country Healthcare NHS Foundation Trust • SharePoint • Message from Mark Axcell & Staff News (16 March 2023) (sharepoint.com) • Message from Mark Axcell & Staff News (02 March 2023) (sharepoint.com) • Message from Sally Roberts & Staff News (23 February 2023) (sharepoint.com) • Message from Mark Axcell & Staff News (16 February 23) (sharepoint.com) • Message from Mark Axcell & Staff News (09 February 2023) (sharepoint.com) • Message from Mark Axcell & Staff News (02 February 2023) (sharepoint.com) • Issue 34 - Black Country Primary Care Brief (sharepoint.com) • Issue 33 - Black Country Primary Care Brief (sharepoint.com) • Issue 31 - Black Country Primary Care Brief (sharepoint.com) • Issue 31 - Black Country Primary Care Brief (sharepoint.com) • Issue 30 - Black Country Primary Care Brief (sharepoint.com) • Issue 29 - Black Country Primary Care Brief (sharepoint.com) • Issue 28 - Black Country Primary Care Brief (sharepoint.com) • Issue 27 - Black Country Primary Care Brief (sharepoint.com) • Issue 26: Black Country Primary Care Brief (sharepoint.com)
NHSI / NHSE	<ul style="list-style-type: none"> • NHS England • NHS England » NHS Digital merges with NHS England
University / Student Nurses	
Medisa / Univadis / Geeky Medics / GP Notebook / Medscape	<ul style="list-style-type: none"> • Medisa • Geeky Medics • Medscape Nurses • GP Notebook • Geeky Medics - YouTube • Geeky Medics Book, New Vertical Videos & New Articles  (mailerlite.com) • GPnotebook focus on renal medicine (contains promotional information) (mailchi.mp)
Nurse Guidelines	
The Health Foundation	<ul style="list-style-type: none"> • The Health Foundation • Why are delayed discharges from hospital increasing? Seeing the bigger picture - The Health Foundation

Continuation of News & Views

The Health Care Leaders Update	<ul style="list-style-type: none"> • Health Care Leader News
Practice Index	
Innovation Agency	<ul style="list-style-type: none"> • Innovation Agency Exchange • Newsletter March 2023 (campaign-archive.com)
RCN	<ul style="list-style-type: none"> • RCN • Letter from the Health and Social Care Secretary to the General Secretary of the Royal College of Nursing - GOV.UK (kingsfundmail.org.uk) • RCN CPD courses with academic credits Secure your place this spring
Cavell Trust	
Nursing in Practice / Nursing Standard / Independent Nurse	<ul style="list-style-type: none"> • Nursing Times • Practice Nursing • Nursing in Practice Bulletin • Nursing in Practice Clinical Bulletin
QNI	<ul style="list-style-type: none"> • QNI • Talk To Us © – The Queen's Nursing Institute (qni.org.uk) • Draft QNI Field Specific SPQ Standards
NMC	<ul style="list-style-type: none"> • NMC
CMO / CNO	<ul style="list-style-type: none"> • Chief medical officer Institute for Government • NHS England » Chief Nursing Officer for England • CNO Bulletin
HRA	<ul style="list-style-type: none"> • Health Research Authority
Nice	<ul style="list-style-type: none"> • NICE
RCGP / BMA / The Lancet	<ul style="list-style-type: none"> • The Lancet • British Medical Journal • Royal College of General Practitioners • British Journal of General Practice

Continuation of News & Views

Nuffield Health	<ul style="list-style-type: none">• Home The Nuffield Trust
Midlands Academic Health Science Network	<ul style="list-style-type: none">• WMAHSN Network
Healthwatch	<ul style="list-style-type: none">• Healthwatch• Our Annual Report 2021-22 Healthwatch
CPD News	<ul style="list-style-type: none">• CPD News
Inside Government	<ul style="list-style-type: none">• Inside Government - Public and Voluntary Sector Events and Resources• Progress with delivering the Emergency Services Network (nao.org.uk)
NHS Resolution	
Other	<ul style="list-style-type: none">• Patients Association• Request Support Services Volunteer Responders (nhsvolunteerresponders.org.uk)

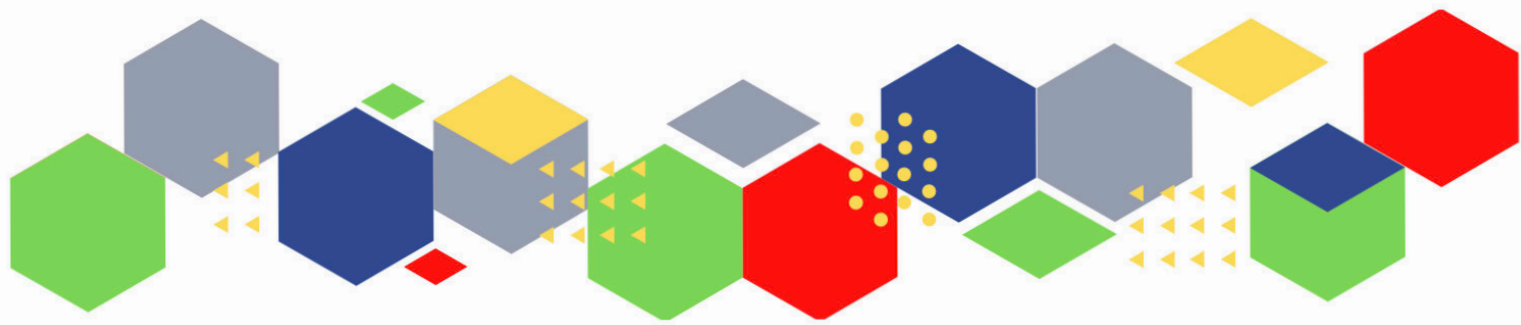
Free Training / Webinars / Meetings / CPD

Development / Information and Knowledge

- [Red Whale Training](#)
- [Issues & Answers](#)
- [Best Practice in delivery and management of immunisation services \(mahealthcareevents.co.uk\)](#)
- [You are invited to the JWC Consensus Document Webinar \(mahealthcareevents.co.uk\)](#)
- [22 March 2023 from 12:30 to 14:00 - Mentoring – the how, the what and the why](#)
- [General Practice Appointment Data \(GPAD\)](#)
- [Remote Consultations \(createsend1.com\)](#)
- [Document Workflow \(createsend1.com\)](#)
- [Supporting Carers in General Practice \(createsend1.com\)](#)
- [Redesigning Appointment Systems \(createsend1.com\)](#)
- [Primary Care Improvers Conference - 7 June 2023 – register your place](#)
- [UK Care Week - Wednesday 22nd March 2023 Thursday 23rd March 2023 NEC, Birmingham](#)
- [PCN Study Day 2023 - Respiratory \(mahealthcareevents.co.uk\)](#)
- [Innovative solutions for your practice \(bestpracticeshow.co.uk\)](#)
- [Career Pathway, Core Cancer Capabilities in Practice \(CiP\) and Education Framework for the Nursing and Allied Health Professions Workforce \(outlook.com\)](#)
- [visit the HEE ACCEND webpage \(outlook.com\)/ watching a short, online presentation \(outlook.com\)](#)
- [Thursday 30 March from 1pm to 2pm: A key to delivering Population Health Management](#)
- [PART 1 – ECHO Interpretation and reports made easy – Tuesday 11th April at 7pm.Registration – CMB TV On Demand \(cardiometabology.com\)](#)
- [PART 2 – The Breathless patient DEMYSTIFIED – Wednesday 19th April at 8pm.Registration – CMB TV On Demand \(cardiometabology.com\)](#)
- [The PIP Talks - Diphtheria and Pertussis](#)
- [Learning from Deaths in Healthcare \(outlook.com\)22nd March](#)
- [Nursing in Practice Virtual - Respiratory - Nursing In Practice 365](#)
- [28 March, 10.30am - 4pm. Celebrating Six Years of Nursing Associates \(NA\) and the difference they make in delivering patient care](#)

<p><i>Development / Workshops / Webinars / Information and Knowledge Continued</i></p>	<ul style="list-style-type: none"> • Respiratory (nursinginpractice365.uk) 4 April MAY NEED SUBSCRIPTION • Public Health & Immunisations (nursinginpractice365.uk) 13 June MAY NEED SUBSCRIPTION • Learn about the Clinical Characteristics of Convexity in Our Webinar on March 30th! (mahealthcareevents.co.uk) • 27 March, 12pm – 1pm. Flexible working: Leading the change at board level • 28 March, 10.30am - 4pm. Celebrating six years of nursing associates (NA) and the difference they make in delivering patient care • 28 March, 10am – 11am. New statutory guidance on working with people and communities • 29 March, 1pm – 2.30pm. Health and wellbeing coach - share and learn webinar • 30 March, 10am – 4pm. #StartWithPeople Spring event
<p>Free to RCN</p>	<ul style="list-style-type: none"> • RCNi events RCNi
<p>Nursing in Practice 360</p>	<p>Nursing in Practice</p>
<p>MIMMs Learning</p>	
<p>Eventbrite</p>	
<p>e-Learning for Health</p>	<ul style="list-style-type: none"> • Menopause Awareness – elearning for healthcare (e-lfh.org.uk)
<p>Skills for Health</p>	<ul style="list-style-type: none"> • Specialist eLearning for health and care professionals (mailchi.mp)
<p>YouTube</p>	<ul style="list-style-type: none"> • NHS England • Black Country Healthcare - YouTube
<p>Future Proof Health Training</p>	<ul style="list-style-type: none"> • Training
<p>Evidence based care</p>	
<p>BCWB Training Hub</p>	<ul style="list-style-type: none"> • Black Country Communications Toolkit - 17 Feb 2023 (mailchi.mp)

Podcasts	<ul style="list-style-type: none"> • The Nursing Handover Podcast • Nursing Standard Podcasts • Nursing Matters • Welcome to the BJN Podcast • Cynet Health Care Podcast • EBN podcast • This Is Nursing • Teach me, I'm a Nurse • Past Caring • RCGP eLearning podcast • The BMJ Podcast • Primary Care Network podcasts • The Professional Support Unit's Pandemic Podcast • The Next GenCast • Stream on Spotify here (outlook.com)
Apps	<ul style="list-style-type: none"> • The Nursing in Practice app • Nursing In Practice Reference – Apps on Google Play • Nursing In Practice Reference on the App Store (apple.com)
Area Bulletins	
Research	<ul style="list-style-type: none"> • Science Daily • Multimorbidity / multiple long-term conditions (MLTC) • National Institute for Health and Care Research • NHS Knowledge and Library Hub - Knowledge and Library Services • Download the quick reference guide (createsend1.com) • NHS England » Maximising the benefits of research • HRA Latest - Making it easier to do clinical trials that everyone can trust (govdelivery.com)
Blogs/Vlogs	<ul style="list-style-type: none"> • Blog NB Medical
Freebies	<ul style="list-style-type: none"> • Blue Light Card
Campagne Links	<ul style="list-style-type: none"> • 2023 D&I Calendar (hubspotusercontent-eu1.net)
Other	



Thank you for reading Future Proof Health's weekly news!

If you missed past issues, please click [here](#) to view them

More information can be found on our website, [here](#)

Don't forget to like us on [Facebook](#) & Follow us on [Twitter](#)

