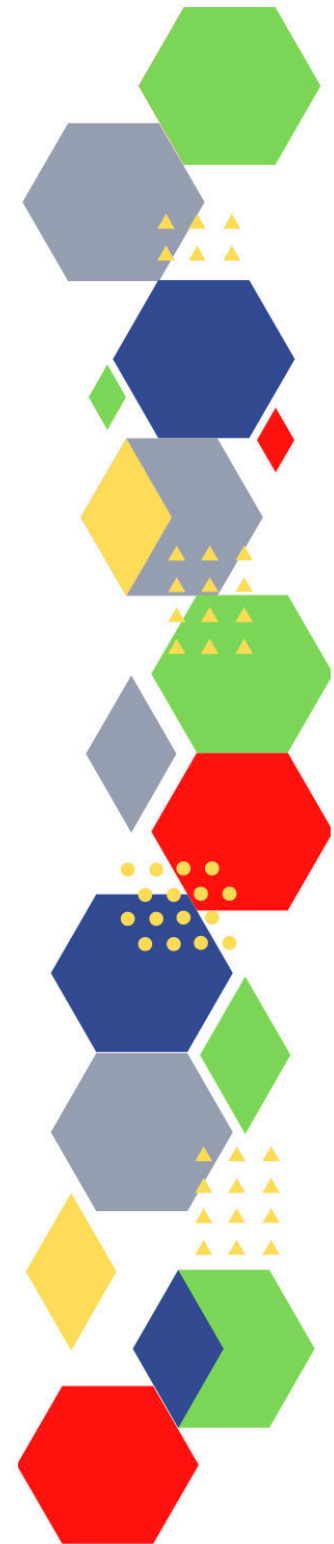


Future Proof Health Presents

Weekly News

20th August 2021



Communication	
Communication with Patients	
Communication within Teams	
People and Personal Development	
Personal / HR & People Development / Leadership	<u>Job Vacancies</u> <u>Accountability and delegation in practice</u>

Health, Safety & Security	
HSE Weekly Digest eBulletin	
NPSA	
CQC	
Vaccines & Medications	Protocol for ordering, storing and handling vaccines
Drug / Device Alerts (MHRA)	
Emergency Situations	The updated National Early Warning Score and its use with suspected Sepsis Resuscitation Council UK
Infection Control	
Safe Guarding	Female genital mutilation (FGM) PREVENT Child protection system in the UK Safeguarding Adults Safeguarding children: detailed information
Practice Policies	
Audit	
Information Governance	Guide to Data Protection

Quality & Service Improvement	
Quality & Service	The PRSB General Practice Assessment Questionnaire (GPAQ) Healthwatch NHS Five Year Forward View General Practice Forward View NMC Workforce planning template
Improvement	
New Roles in General Practice	Standards for nursing associates
Personal Practice & Development	
NHS Self Care & Resilience	
ICS / PCN	ADDRESSING THE CARE BACKLOG Integrated Care Systems: Guidance
Leadership	

Personalised Care	
Personalised Care / Self Care	Self care forum Personalised Care Institute
Social Prescribing / Health Coaching	Merton Social Prescribing Programme Evaluation

Equality & Diversity	
Equality & Diversity	Public Health Profiles
Inclusion Health	
Poverty / Homelessness	
Health Inequalities	
Migrant Health	

Health & Well-Being	
Management of Emergency Situations	The updated National Early Warning Score and its use with suspected Sepsis
Red Flags	
Sepsis	Sepsis: recognition, diagnosis and early management Sepsis guidance implementation advice for adults Sepsis in Children Sepsis Trust RCGP: Sepsis
Therapeutic Monitoring	

Role Specific	
Cervical Cytology	
Ear Care	
Wound Management	JWC Masterclass on Electrical Stimulation Pre-clinical Evaluation of a New Antimicrobial Enzyme Wound Expo 2021
Minor Surgery	

Health Promotion / Health Screening	
Health Promotion / Population Health	
Health Screening	
PHE	Knowledge & Library Services
NHS Health Check	NHS Health Check
NOIDS	Notifications of infectious diseases (NOIDs)
Addiction/Smoking	Stopping smoking and weight gain

Immunisation / Travel Health	
Vaccinations and infections	
Flu	
Children	
Adults	
Vaccine Update	Vaccine update
Travel Health	Travel Health Pro Fit for Travel Travel Health Jane Chiodini
Covid Vaccine	COVID-19 vaccination: women of childbearing age, currently pregnant or breastfeeding One million children and young people can get NHS COVID jab Enhanced Service Specification: COVID-19 vaccination programme 2020/21 GUIDANCE FOR MATERNITY STAFF UK COVID-19 Update: Booster Vaccines and Myocarditis Link to Jabs COVID-19 vaccination programme 3 in 4 UK adults receive both doses of a COVID-19 vaccine

Mental Health / Learning Disability / Disability	
Mental Health	Mental Health Mental Health UK Mind Place2b Rethink Mental Illness Young Minds
Learning Disability	Learning Disabilities Learning Disability England Mencap Bild Autism
Disability	Disability Rights UK Disability Matters
Family Planning & Sexual Health	
Family Planning	
Reproductive	Paracetamol use in pregnancy
Sexual Health	

From Cradle to...

<p>Infant Health</p>	<p>Women and Child First</p> <p>Improving outcomes in infant food allergy</p> <p>Tommys</p> <p>First Steps Nutrition Trust</p> <p>Bliss</p>
<p>Child Health</p>	<p>Nappy dermatitis</p> <p>Unicef</p> <p>Health Professional Academy</p> <p>Premature Babies</p> <p>Child and Maternal Health</p>
<p>Adolescent Health</p>	<p>Adolescent Health Programme</p> <p>Society for Adolescent Health and Medicine</p> <p>Early adolescence: applying All Our Health</p> <p>RCGP: Child and Adolescent Health</p>
<p>Mens Health</p>	<p>Prostate Cancer Newsletter</p>

Women's Health	HRT & the menopause in the 21st Century Well Spring
Trans / Non-binary Health / LGBTQ+	
The Older Population	BGS Impact of Covid-19 on older people's mental and physical health: one year on
Carers	Hospital discharge and community support: Finance support and funding flows
Complex Needs	Sheffield based GPs join forces to reach vulnerable patients during pandemic Children and young people with severe complex needs require coordinated health, social and education services, says NICE in draft guideline

Care of Patients with Long Term Conditions	
LTC	
Diabetes & Pre-Diabetes	Vulnerable people with diabetes Diabetes duration tied to dementia risk, irrespective of glycaemic control AZ Medical and Educational Goods and Services in Diabetes
Respiratory	Spirometry: step by step ARTP British Lung Foundation Respiratory academy Clinical Webinar
COPD	Right Breathe
Asthma	FeNO - Fractional exhaled nitric oxide - for the diagnosis and management of Asthma Asthma UK Asthma: diagnosis, monitoring and chronic asthma management GINA 2021: the missing pieces in the childhood asthma puzzle GINA: Interim Guidance About COVID-19 & Asthma

Continuation of Long Term Conditions

Hypertension	British Heart Foundation Blood Pressure UK Hypertension in adults: diagnosis and management Hypertension in adults: diagnosis and treatment
CVD/AF	QRISK®3-2018 risk calculator Charity warns heart surgery waiting times could rise more than 40% by next spring without new funding Heart Rhythm Alliance CVD risk assessment and management Health matters: preventing cardiovascular disease
Heart Failure	
Cancer / Oncology	Surviving Thyroid Cancer Prostate Cancer Newsletter Patients less likely to rate cancer care as 'very good' during pandemic Help Us Help You - Lung Cancer Symptoms
Chronic Kidney Disease	SGLT2 inhibitor licensed to treat chronic kidney disease

Continuation of Long Term Conditions

Liver Disease	British Liver Trust
Blood Disorders	Blood Cancer Thalassaemia ITP Haemophilia UK MDS Forum
G.I	
ENT	
G.U	

<i>Continuation of Long Term Conditions</i>	
Neurological Conditions	The Brain Tumour Charity
Musculoskeletal Conditions	Rheumatology National Axial Spondyloarthritis Society
Endocrine Disorders / Metabolic Disorders	Endocrinology Turner Syndrome Support Society Thyroid Eye Disease British Thyroid Foundation Thyroid UK Pituitary Addisons Disease Parathyroid UK The Royal Osteoporosis Society Metabolic Support UK

<i>Continuation of Long Term Conditions</i>	
Frailty	Recognising frailty Identifying frailty CLINICAL FRAILTY SCALE
Dementia	Dementia UK Understanding dementia Artificial intelligence brain scan trial will help clinicians diagnose dementia in a day
Dermatology	GRAPPA Refines Recommendations on Psoriatic Disease Treatment
Allergy / Auto-immune Conditions	Allergy UK
Obesity	Obesity UK
Pain Management	Pain Concern
Multi-Morbidity	Multimorbidity
Minor Illness / First Contact	
Assessment	
Other	Ultra Rare Disease Disorders And Disabilities Foundation

End of Life Care	
End of Life Care	
Covid-19	
Covid-19	<ul style="list-style-type: none">Covid LiveUK COVID-19 Update: Infection Rates Stay High, Latest R NumbersUK COVID-19 Update: NHS Treatment Figures, Blood Clots After AZ Vaccine AnalysisCOVID-19 Weekly UpdateCOVID-19 study finds lower prevalence in schoolsSelf-isolation removed for double-jabbed close contacts from 16 August
Long Covid	<ul style="list-style-type: none">Supporting your recovery after COVID-19Long Covid: the symptoms and tips for recoveryPost-COVID Syndrome (Long COVID)What is long COVID?Enhanced service specification: Long COVID 2021/22

News & Views

Digital News / Remote Consultations	Digital Health News Webinars Digital Health News The Digital Health Autumn Leadership Summit COVID-19 and the digital divide
PSNC News	12th August / 13th August / 17th August
60 Second GP / Pulse / GP Online / HSJ	60 Second GP
Primary Care Update / PCC	Primary Care Bulletin
Kings Fund	Weekly News / Health Management and Policy Alert / Health and Well Being Bulletin / Digital Health Digest / Events Update
World Health Organisation	WHO
Midlands Academic Health Science Network	
Healthwatch	Healthwatch
Black Country Bulletins	

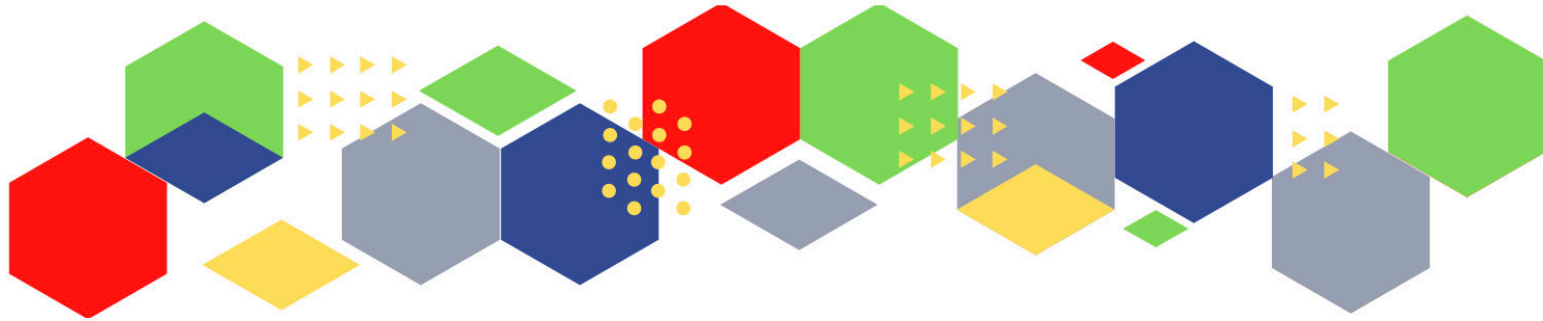
Continuation News & Views

IHCT / CCG / STP / Healthier Futures	Healthier Futures Black Country & West Birmingham CCG
University / Student Nurses	
Medisa / Univadis / Geeky Medics / GP Notebook / Medscape	Univadis Newsletter Medisa Geeky Medics
MIMS	Latest MIMS news
The Health Foundation	
The Health Care Leaders Update	Health Care Leader News
PHE	
Innovation Agency	
RCN	RCN+I RCN Events

Continuation News & Views

Nursing in Practice / Nursing Standard / Independent Nurse	Nursing in Practice Clinical Nursing in Practice Bulletin Nursing in Practice Learning Practice Nursing Newsletter Independent News GPN Bulletin
QNI	QNI
NMC	NMC
CNO	
Nice	NICE
RCGP / BMA / The Lancet	The Lancet British Medical Journal Royal College of General Practitioners
Midlands Academic Health Science Network	WMAHSN Network

Free Training / Webinars / Meetings / CPD	
Development / Information and Knowledge	RCN Events - West Midlands MIMS Learning Live THE BEST PRACTICE SHOW – 13-14 October 2021 FREE Cancer Screening Webinar Wound Expo
BCWB Training Hub	Black Country and West Birmingham Training Hub
Research	Science Daily
Freebies	Blue Light Card



Thank you for reading Future Proof Health's weekly news!

If you missed past issues, please click [here](#) to view them

More information can be found on our website, [here](#)

Don't forget to like us on [Facebook](#) & Follow us on [Twitter](#)

