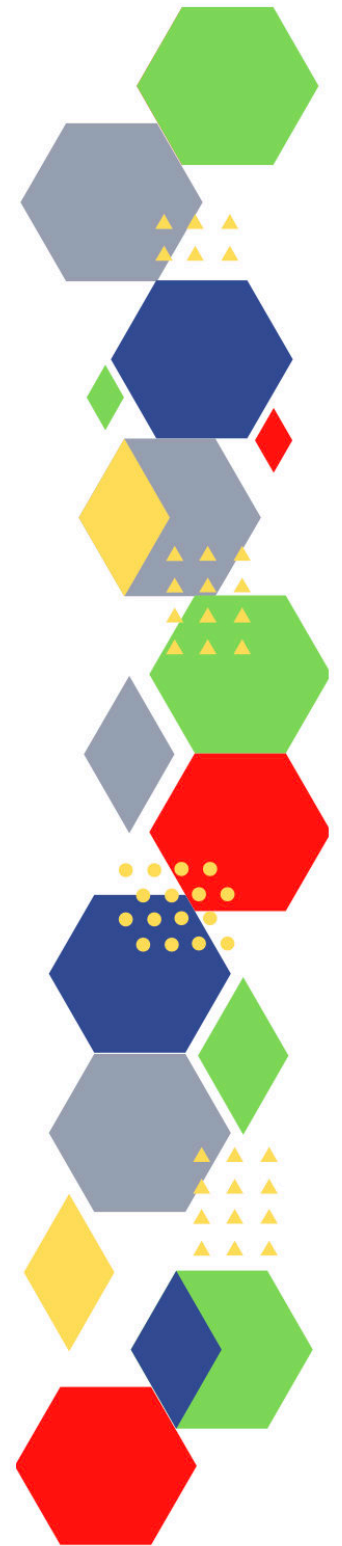




Future Proof Health Presents

Weekly News

20th May 2022



Communication	
Communication with Patients	<ul style="list-style-type: none"> <li>• <a href="#">Safe Surgeries Toolkit</a></li> <li>• <a href="#">Getting ready for patients to have access to their future data   NHS England and NHS Improvement Events</a></li> </ul>
Communication within Teams	
Consent	<ul style="list-style-type: none"> <li>• <a href="#">Gillick competency and Fraser guidelines</a></li> <li>• <a href="#">CONSENT POLICY</a></li> <li>• <a href="#">ReSPECT for healthcare professionals</a></li> </ul>
People and Personal Development	
Personal / People Development / Leadership	<ul style="list-style-type: none"> <li>• <a href="#">Accountability and delegation in practice</a></li> <li>• <a href="#">Clinical Fellow Schemes   Faculty of Medical Leadership and Management (createsend1.com)</a></li> </ul>
NHS Employers / HR / NHS Pension	<ul style="list-style-type: none"> <li>• <a href="#">NHS Employers</a></li> <li>• <a href="#">Pensions Online</a></li> <li>• <a href="#">Warning issued after nurse loses £45,000 in pension fraud (rcni.com)</a></li> <li>• <a href="#">Exclusions - NHS Resolution</a></li> <li>• <a href="#">Acas   Making working life better for everyone in Britain</a></li> <li>• <a href="#">NHS Employers</a></li> </ul>
Health, Safety & Security	
	<ul style="list-style-type: none"> <li>• <a href="#">NPSA</a></li> <li>• <a href="#">Control of Substances Hazardous to Health (COSHH)</a></li> <li>• <a href="#">HSE Weekly Digest eBulletin</a></li> </ul>
Gov UK - NHS	<ul style="list-style-type: none"> <li>• <a href="#">New Deputy Chief Medical Officer for England announced - GOV.UK (www.gov.uk)</a></li> </ul>
CQC	<ul style="list-style-type: none"> <li>• <a href="#">GP mythbusters</a></li> <li>• <a href="#">Examples of outstanding practice for GPs</a></li> <li>• <a href="#">News from the Care Quality Commission</a></li> </ul>
MIMS	<ul style="list-style-type: none"> <li>• <a href="#">Prescribing Update</a></li> </ul>
Antibiotic steward-ship / Anti-microbial resistance	<ul style="list-style-type: none"> <li>• <a href="#">Long-term Antibiotic Use in Childhood Tied to Cognitive Impairment Later in Life (medscape.com)</a></li> </ul>
Drug / Device Alerts (MHRA)	

Emergency Situations	<ul style="list-style-type: none"> <li>• <a href="#">The updated National Early Warning Score and its use with suspected Sepsis</a></li> <li>• <a href="#">Resuscitation Council UK</a></li> </ul>
Vaccines / Medications / Prescribing	<ul style="list-style-type: none"> <li>• <a href="#">Protocol for ordering, storing and handling vaccines</a></li> <li>• <a href="#">A Competency Framework for all Prescribers</a></li> <li>• <a href="#">Non-medical prescribing</a></li> <li>• <a href="#">The Human Medicines Regulations 2012</a></li> <li>• <a href="#">RCN - Non-medical prescribers</a></li> <li>• <a href="#">Royal Pharmaceutical Society</a></li> <li>• <a href="#">Standards for prescribing</a></li> <li>• <a href="#">Clinical Negligence Scheme for General Practice</a></li> <li>• <a href="#">Nitrofurantoin-induced pulmonary fibrosis: a case report</a></li> <li>• <a href="#">Nitrofurantoin now contraindicated in most patients with an estimated glomerular filtration rate (eGFR) of less than 45 ml/min/1.73m<sup>2</sup></a></li> </ul>
Infection Control / Infection Statics	<ul style="list-style-type: none"> <li>• <a href="#">How to reduce glove use   RCN Magazines   Royal College of Nursing</a></li> </ul>
Safe Guarding	<ul style="list-style-type: none"> <li>• <a href="#">Female genital mutilation (FGM)</a></li> <li>• <a href="#">PREVENT</a></li> <li>• <a href="#">Child protection system in the UK</a></li> <li>• <a href="#">Safeguarding Adults</a></li> <li>• <a href="#">Safeguarding children: detailed information</a></li> <li>• <a href="#">WST Training Update - April 2022 (govdelivery.com) – WOLVERHAMPTON ONLY</a></li> </ul>
Practice Policies	
Audit	
Information Governance / Record Keeping	<ul style="list-style-type: none"> <li>• <a href="#">Guide to Data Protection</a></li> <li>• <a href="#">Supporting general practice – Medical record keeping</a></li> </ul>

Quality & Service Improvement

Quality, Service & Improvement	<ul style="list-style-type: none"> <li>• <a href="#">The PRSB</a></li> <li>• <a href="#">General Practice Assessment Questionnaire (GPAQ)</a></li> <li>• <a href="#">Healthwatch</a></li> <li>• <a href="#">NHS Five Year Forward View</a></li> <li>• <a href="#">General Practice Forward View</a></li> <li>• <a href="#">NMC</a></li> <li>• <a href="#">Dr Jon Griffiths</a></li> <li>• <a href="#">NHS Confed</a></li> </ul>
Roles in General Practice	<ul style="list-style-type: none"> <li>• <a href="#">Standards for nursing associates</a></li> <li>• <a href="#">GP mythbuster 57: Health Care Assistants in General Practice</a></li> </ul>
Revalidation	
Personal Practice & Development	
Practice Management	<ul style="list-style-type: none"> <li>• <a href="#">Institute of General Practice Management</a></li> <li>• <a href="#">Practice Index</a></li> </ul>
Employment	<ul style="list-style-type: none"> <li>• <a href="#">Employment guidance for NHS staff (rcn.org.uk)</a></li> <li>• <a href="#">Individual risk assessments (rcn.org.uk)</a></li> </ul>
NHS Self Care & Resilience	<ul style="list-style-type: none"> <li>• <a href="#">Samaritans</a></li> <li>• <a href="#">Mental Health at work</a></li> <li>• <a href="#">Calm</a></li> <li>• <a href="#">Supporting our NHS people</a></li> <li>• <a href="#">The Hub :: Black Country Healthcare NHS Foundation Trust</a></li> <li>• <a href="#">Leading with compassion   The King's Fund (kingsfund.org.uk)</a></li> </ul>
Practice Transformation	<ul style="list-style-type: none"> <li>• <a href="#">Doctors' new guidance can improve health service culture - GMC (gmc-uk.org)</a></li> <li>• <a href="#">May 2022 newsletter (campaign-archive.com)</a></li> </ul>
Future of NHS / General Practice	<ul style="list-style-type: none"> <li>• <a href="#">Additional information on GP appointments added to monthly statistics publications - NHS Digital</a></li> <li>• <a href="#">Health and Care Bill granted Royal Assent in milestone for healthcare recovery and reform - GOV.UK (www.gov.uk)</a></li> <li>• <a href="#">Integration and innovation in action: provider collaboration   NHS Confederation</a></li> </ul>

ICS / PCN	<ul style="list-style-type: none"> <li>• <a href="https://kingsfundmail.org.uk">Integrated care in practice   Secure your place (kingsfundmail.org.uk)</a></li> <li>• <a href="#">NHS England » Integrated Care Boards in England</a></li> </ul>
QOF / PHOF / DES / LES / NHS Contract / CQRS / CQUIN	
Leadership	<ul style="list-style-type: none"> <li>• <a href="#">Leadership Academy</a></li> </ul>
Personalised Care	
Personalised Care / Self Care / Social Prescribing / Health Coaching	<ul style="list-style-type: none"> <li>• <a href="#">Self Care forum</a></li> <li>• <a href="#">Personalised Care Institute</a></li> <li>• <a href="#">Personalised care</a></li> <li>• <a href="#">Social Prescribing Academy</a></li> <li>• <a href="#">Leadership for Personalised Care</a></li> <li>• <a href="#">Self Care Forum Newsletter (mailchi.mp)</a></li> </ul>
Group consultation	
Working Differently	<ul style="list-style-type: none"> <li>• <a href="#">Integration and innovation in action: provider collaboration   NHS Confederation</a></li> <li>• <a href="#">How community organisations contribute to healthy ageing</a></li> </ul>
Shared Decision Making	<ul style="list-style-type: none"> <li>• <a href="#">Implementing shared decision making: Putting NICE guidance into practice virtual event - YouTube</a></li> <li>• <a href="#">Helping health professionals put shared decision making into practice virtual event - YouTube</a></li> </ul>
Equality & Diversity	
Equality & Diversity	<ul style="list-style-type: none"> <li>• <a href="#">Public Health Profiles</a></li> </ul>
Inclusion Health	<ul style="list-style-type: none"> <li>• <a href="#">Health Creation Academic Network</a></li> </ul>
Poverty / Homelessness	<ul style="list-style-type: none"> <li>• <a href="#">Crisis</a></li> <li>• <a href="#">This is Poverty</a></li> <li>• <a href="#">HEALTH AND PROSPERITY INTRODUCING THE IPPR COMMISSION ON HEALTH AND PROSPERITY</a></li> </ul>

Population Health / Health Communities	<ul style="list-style-type: none"> <li>• <a href="http://www.gov.uk">Social deprivation and the likelihood of flooding (www.gov.uk)</a></li> <li>• <a href="#">Civitas: Institute for the Study of Civil Society International Health Care Outcomes Index 2022</a></li> </ul>
Thrive Into Work	<ul style="list-style-type: none"> <li>• <a href="#">Thrive into Work</a></li> <li>• <a href="#">Thrive into Work Referral form</a></li> </ul>
Health Inequalities	
Trans / Non-binary Health / LGBTQ+	<ul style="list-style-type: none"> <li>• <a href="#">LGBT Foundation</a></li> <li>• <a href="#">NHS population screening: information for trans and non-binary people</a></li> <li>• <a href="#">Cervical screening for trans men and/or non-binary people</a></li> </ul>
Migrant / Refugee Health	<ul style="list-style-type: none"> <li>• <a href="#">THE REFUGEE &amp; MIGRANT CENTRE</a></li> <li>• <a href="#">UKHSA arrivals from Ukraine guidance for primary care   PHE/DH/DWP guideline   Guidelines</a></li> </ul>
Traveller / Gypsy / Romany Health	
Veterans Health	<ul style="list-style-type: none"> <li>• <a href="#">The first call for help takes courage</a></li> <li>• <a href="#">An evaluation of the veteran friendly practice accreditation programme   BJGP Open</a></li> <li>• <a href="#">Veterans' healthcare toolkit: Veteran friendly GP practice accreditation (rcgp.org.uk)</a></li> </ul>
<b>Management of Emergency Situations</b>	
Management of Emergency Situations	<ul style="list-style-type: none"> <li>• <a href="#">The updated National Early Warning Score and its use with suspected Sepsis</a></li> </ul>
111	
First Contact	<ul style="list-style-type: none"> <li>• <a href="#">Supporting general practice – Common pitfalls</a></li> <li>• <a href="#">Paediatrics for Primary Care (and anyone else) (gppaedstips.blogspot.com)</a></li> <li>• <a href="#">Centor Score (Modified/McIsaac) for Strep Pharyngitis - MDCalc</a></li> <li>• <a href="#">CRB65 score in the assessment of community acquired pneumonia (CAP) - General Practice Notebook (gpnotebook.com)</a></li> </ul>
Red Flags	

Sepsis	<ul style="list-style-type: none"> <li>• <a href="#">Sepsis: recognition, diagnosis and early management</a></li> <li>• <a href="#">Sepsis guidance implementation advice for adults</a></li> <li>• <a href="#">Sepsis in Children</a></li> <li>• <a href="#">Sepsis Trust</a></li> <li>• <a href="#">RCGP: Sepsis</a></li> <li>• <a href="#">quick SEPSIS RELATED ORGAN FAILURE ASSESSMENT</a></li> </ul>
Therapeutic Monitoring	
OSCE	<ul style="list-style-type: none"> <li>• <a href="#">Geeky Medics</a></li> <li>• <a href="#">Abdominal Examination - Demonstration - YouTube</a></li> <li>• <a href="#">Cardiovascular Examination - Demonstration - YouTube</a></li> <li>• <a href="#">Respiratory Examination - Demonstration - YouTube</a></li> <li>• <a href="#">Physical Diagnosis Skills - University of Washington School of Medicine</a></li> </ul>
<b>Role Specific</b>	
Cervical Cytology	<ul style="list-style-type: none"> <li>• <a href="#">Guide to the interim assessment</a></li> <li>• <a href="#">British Association for Cytopathology</a></li> <li>• <a href="#">Lab Tests Online</a></li> <li>• <a href="#">Cervical Screening Campaign Survey 2022 (google.com)</a></li> </ul>
Ear Care	<ul style="list-style-type: none"> <li>• <a href="#">Ear Care Centre</a></li> <li>• <a href="#">RNID</a></li> <li>• <a href="#">Guidelines in Practice – supporting implementation of best practice</a></li> <li>• <a href="#">Clinical Guidance Notice (Interim) to Accommodate COVID-19 Working Practice</a></li> <li>• <a href="#">Protocols</a></li> </ul>
Wound Management	<ul style="list-style-type: none"> <li>• <a href="#">Microworld</a></li> <li>• <a href="#">Tissue Viability Society</a></li> <li>• <a href="#">The BLS</a></li> <li>• <a href="#">Wounds on Thursdays</a></li> <li>• <a href="#">Wounds Week: Access 10 CPD-certified webinars (mah-communications.co.uk)</a></li> </ul>
Minor Surgery	
Obtaining Samples / Results	<ul style="list-style-type: none"> <li>• <a href="#">Lab Tests Online</a></li> </ul>

Health Promotion / Health Screening	
Health Promotion / Population Health	<ul style="list-style-type: none"> <li>• <a href="#">Better Health</a></li> <li>• <a href="#">EXi App</a></li> <li>• <a href="#">NHS England » Case study: 12,000 extra people shielded in Norfolk using population health management</a></li> </ul>
Health Screening	<ul style="list-style-type: none"> <li>• <a href="#">PHE Screening</a></li> </ul>
PHE / OHID / UKHSA	<ul style="list-style-type: none"> <li>• <a href="#">Knowledge &amp; Library Services</a></li> <li>• <a href="#">Campaign Resources</a></li> <li>• <a href="#">Public Health Profiles</a></li> <li>• <a href="#">Health Publications</a></li> <li>• <a href="#">Health Profile for England 2021</a></li> <li>• <a href="#">UKHSA'S weekly surveillance report: focusing on 'Pillar 1' data - UK Health Security Agency (blog.gov.uk)</a></li> <li>• <a href="#">Public Health Outcomes Framework: May 2022 data update - GOV.UK (www.gov.uk)</a></li> <li>• <a href="#">Public health control and management of diphtheria (publishing.service.gov.uk)</a></li> <li>• <a href="#">Wider Determinants of Health: May 2022 update - GOV.UK (www.gov.uk)</a></li> </ul>
NHS Health Check	<ul style="list-style-type: none"> <li>• <a href="#">NHS Health Check</a></li> </ul>
NOIDS / PHE Surveillance / Syndromic Surveillance	<ul style="list-style-type: none"> <li>• <a href="#">Notifications of infectious diseases (NOIDs)</a></li> </ul>
Addiction/Smoking	<ul style="list-style-type: none"> <li>• <a href="#">Drink Coach</a></li> <li>• <a href="#">Stop smoking interventions and services</a></li> <li>• <a href="#">Medscape Exclusive News</a></li> <li>• <a href="#">Local Tobacco Control Profiles: May 2022 update - GOV.UK (www.gov.uk)</a></li> </ul>



## Immunisation / Travel Health

- [Vaccinations and infections](#)
- [Joint Committee on Vaccination and Immunisation](#)
- [Immunisation against infectious disease](#)
- [West Midlands Immunisation Service](#)
- [Immunisation information for Health Care Services within the West Midlands area](#)
- [Vaccination of individuals with uncertain or incomplete immunisation status](#)
- [WHO vaccine-preventable diseases: monitoring system. 2020 global summary](#)
- [The Foundations of Immunization: What, Who, When and Why?](#)
- [Winter Vaccination - Prime phase: Social Media content calendar and assets - 2021](#)
- [Measles outbreak training](#)
- [Vaccine Safety Basics](#)
- [HPV vaccination: guidance for healthcare practitioners](#)
- [HPV vaccination programme for men who have sex with men \(MSM\)](#)
- [Changing to a 2 dose NHS HPV vaccination schedule letter](#)
- [Herpes zoster \(shingles\) immunisation programme 2021 to 2022: evaluation reports](#)
- [COVID-19 vaccine surveillance report: data to week 16 \(21 April\)](#)
- [Pertussis vaccination programme for pregnant women update: vaccine coverage in England, October to December 2021](#)
- [Quarterly vaccination coverage statistics for children aged up to 5 years in the UK \(COVER programme\): October to December 2021](#)

Flu

- [Flu and flu vaccinations](#)
- [The national influenza immunisation programme 2021 to 2022](#)
- [Flu vaccines for the 2021 to 2022 season poster](#)
- [Appendix C: Flu vaccinator competency assessment tool](#)
- [Healthcare assistants and flu vaccinations](#)
- [Flu Campaign Resources 2021/22](#)
- [National flu and COVID-19 surveillance reports published](#)
- [National flu immunisation programme plan 2022 to 2023 - GOV.UK \(www.gov.uk\)](#)
- [UKHSA flu immunisation 2022–2023 guideline | PHE/DH/DWP guideline | Guidelines](#)

*Continuation of Immunisation / Travel Health*

Covid Vaccine	<ul style="list-style-type: none"> <li>• <a href="#">Greenbook COVID-19 chapter 14a</a></li> <li>• <a href="#">Updates made to the COVID-19 vaccination elearning programme</a></li> <li>• <a href="#">HEE e-LfH COVID-19 vaccination programme launches hit 2 million</a></li> <li>• <a href="#">COVID-19 Vaccine Moderna e-learning now available</a></li> <li>• <a href="#">GP COVID-19 vaccine dashboard</a></li> <li>• <a href="#">Coronavirus (COVID-19) vaccines adverse reactions</a></li> <li>• <a href="#">NHS England » NHS delivers more than half of spring boosters as latest invites land</a></li> <li>• <a href="#">COVID-19 Vaccine Effectiveness in Variants of Concern: What Do We Currently Know? (medscape.org)</a></li> <li>• <a href="#">Coronavirus (COVID-19) Infection Survey, UK: antibody and vaccination data, 4 May 2022 - GOV.UK (www.gov.uk)</a></li> <li>• <a href="#">Coronavirus » Guidance on 'pausing' LVS, HH/HH+ and VC sites (england.nhs.uk)</a></li> </ul>
Children	
Adults	<ul style="list-style-type: none"> <li>• <a href="#">Immunisation patient group direction (PGD) templates</a></li> <li>• <a href="#">Shingles immunisation programme: introduction of Shingrix® letter</a></li> </ul>
Vaccine Update	<ul style="list-style-type: none"> <li>• <a href="#">Vaccine update: Issue 325, April 2022 (publishing.service.gov.uk)</a></li> <li>• <a href="#">Vaccine Update Index</a></li> <li>• <a href="#">Vaccine update: issue 326, April 2022, HPV special edition</a></li> <li>• <a href="#">Vaccine update: issue 327, May 2022, SCID, TB and BCG special edition</a></li> </ul>
PGD	
Travel Health	<ul style="list-style-type: none"> <li>• <a href="#">Travel Health Pro</a></li> <li>• <a href="#">Fit for Travel</a></li> <li>• <a href="#">Travel Health</a></li> <li>• <a href="#">Jane Chiodini</a></li> <li>• <a href="#">Corona.Help</a></li> </ul>

Mental Health / Learning Disability / Disability

<p>Mental Health</p>	<ul style="list-style-type: none"> <li>• <a href="#">Mental Health</a></li> <li>• <a href="#">Mental Health UK</a></li> <li>• <a href="#">Mind</a></li> <li>• <a href="#">Place2b</a></li> <li>• <a href="#">Rethink Mental Illness</a></li> <li>• <a href="#">Young Minds</a></li> <li>• <a href="#">Every Mind Matters</a></li> <li>• <a href="#">Calm</a></li> <li>• <a href="#">Headspace</a></li> <li>• <a href="#">We Can Talk</a></li> <li>• <a href="#">Get Your Mind Plan</a></li> <li>• <a href="#">Feeling low?</a></li> <li>• <a href="#">Better Health - Every Mind Matters - Resources</a></li> <li>• <a href="#">ZSA Training</a></li> <li>• <a href="#">Psychiatry - Medscape</a></li> <li>• <a href="#">Severe mental illness (SMI) profile: May 2022 update - GOV.UK (www.gov.uk)</a></li> <li>• <a href="#">Loneliness - Every Mind Matters - NHS (www.nhs.uk)</a></li> <li>• <a href="#">Major HEE review recommends ways to develop the mental health nursing workforce   Health Education England</a></li> <li>• <a href="#">Recipients of £5.4 million suicide prevent fund revealed in Mental Health Awareness Week - GOV.UK (www.gov.uk)</a></li> </ul>
<p>Learning Disability</p>	<ul style="list-style-type: none"> <li>• <a href="#">Learning Disabilities</a></li> <li>• <a href="#">Learning Disability England</a></li> <li>• <a href="#">Mencap</a></li> <li>• <a href="#">Bild</a></li> <li>• <a href="#">Autism</a></li> </ul>
<p>Disability (Inc. hearing and visual)</p>	<ul style="list-style-type: none"> <li>• <a href="#">Disability Rights UK</a></li> <li>• <a href="#">Disability Matters</a></li> <li>• <a href="#">RNID - National hearing loss charity</a></li> </ul>

From Cradle to...

Infant Health	<ul style="list-style-type: none"> <li>• <a href="#">Tommys</a></li> <li>• <a href="#">First Steps Nutrition Trust</a></li> <li>• <a href="#">Bliss</a></li> <li>• <a href="#">NHS App - Baby Buddy</a></li> <li>• <a href="#">NHS App - Peanut</a></li> <li>• <a href="#">ICON Toolkit</a></li> <li>• <a href="#">Health visitor service delivery metrics experimental statistics: quarterly data for 2021 to 2022 (www.gov.uk)</a></li> <li>• <a href="#">Breastfeeding at 6 to 8 weeks after birth: quarterly data for 2021 to 2022 (www.gov.uk)</a></li> </ul>
Child Health	<ul style="list-style-type: none"> <li>• <a href="#">Unicef</a></li> <li>• <a href="#">Health Professional Academy</a></li> <li>• <a href="#">Premature Babies</a></li> <li>• <a href="#">Child and Maternal Health</a></li> <li>• <a href="#">Women and Child First</a></li> <li>• <a href="#">Child Health Information Services</a></li> <li>• <a href="#">Place2b</a></li> <li>• <a href="#">Childhood eczema</a></li> <li>• <a href="#">Childhood asthma</a></li> <li>• <a href="#">Paediatrics for Primary Care (and anyone else) (gppaedstips.blogspot.com)</a></li> <li>• <a href="#">Acute hepatitis: technical briefing - GOV.UK (www.gov.uk)</a></li> <li>• <a href="#">Paediatric focus from GPn (contains content from Nestle Health Science: Important product announcement – cows' milk allergy) (mailchi.mp)</a></li> <li>• <a href="#">Admissions for children with long-term conditions, emergency admissions and A&amp;E attendance: 2022 update - GOV.UK (www.gov.uk)</a></li> <li>• <a href="#">Child development outcomes at 2 to 2 and a half years: quarterly data for 2021 to 2022 (www.gov.uk)</a></li> <li>• <a href="#">Increase in acute hepatitis cases of unknown aetiology in children - GOV.UK (www.gov.uk)</a></li> <li>• <a href="#">Proposal to standardise services to support children with reduced vision during in-school screening</a></li> </ul>

<p>Adolescent Health</p>	<ul style="list-style-type: none"> <li>• <a href="#">Adolescent Health Programme</a></li> <li>• <a href="#">Society for Adolescent Health and Medicine</a></li> <li>• <a href="#">Young Minds</a></li> <li>• <a href="#">Emotional Support for Young People - The Health Foundation</a></li> </ul>
<p>Mens Health</p>	<ul style="list-style-type: none"> <li>• <a href="#">Mens Health Forum</a></li> <li>• <a href="#">Mens Health Month</a></li> <li>• <a href="#">Mens health.org</a></li> <li>• <a href="#">Mens Health UK</a></li> <li>• <a href="#">Men and mental health</a></li> <li>• <a href="#">Men's Mental Health Awareness</a></li> <li>• <a href="#">Prostate Cancer UK</a></li> <li>• <a href="#">Orchid Fighting Male Cancer</a></li> <li>• <a href="#">Prostate Cancer UK Facebook Page</a></li> <li>• <a href="#">Men's Voices Event</a></li> <li>• <a href="#">Movember</a></li> <li>• <a href="#">Men's health guidance   NHS Employers</a></li> <li>• <a href="#">UKHSA HPV vaccination guidance   PHE/DH/DWP guideline   Guidelines</a></li> </ul>
<p>Women's Health</p>	<ul style="list-style-type: none"> <li>• <a href="#">Womens Health Concern</a></li> <li>• <a href="#">Well Being of Women</a></li> <li>• <a href="#">Coppa Feel</a></li> <li>• <a href="#">Menopause Matters</a></li> <li>• <a href="#">The Menopause Charity</a></li> <li>• <a href="#">Royal College of Obstetricians and Gynaecologists - Guidelines</a></li> <li>• <a href="#">Pelvic Partnership</a></li> <li>• <a href="#">CRUK - Womens Cancer</a></li> <li>• <a href="#">Breast Cancer Now</a></li> <li>• <a href="#">Foundation for Women's Cancer</a></li> <li>• <a href="#">Eve Appeal</a></li> <li>• <a href="#">Ovarian.Org</a></li> <li>• <a href="#">Jo's Trust</a></li> <li>• <a href="#">Well Spring</a></li> <li>• <a href="#">HRT products limited to three-month supply   MIMS online</a></li> <li>• <a href="#">The Howard League   APPG inquiry uncovers damaging impact of imprisonment on women's health and well-being</a></li> </ul>

The Older Population	<ul style="list-style-type: none"> <li>• <a href="#">BGS</a></li> <li>• <a href="#">Ageing Better</a></li> <li>• <a href="#">Delirium Champions - YouTube</a></li> </ul>
Carers / Social Care / Care Homes	<ul style="list-style-type: none"> <li>• <a href="#">The Care Provider Alliance</a></li> <li>• <a href="#">Skills for Care</a></li> <li>• <a href="#">The Care Workers' Charity</a></li> <li>• <a href="#">Supporting Adult Carers</a></li> <li>• <a href="#">Adult Social Care Update</a></li> </ul>
Young Carers	
Complex Needs	
Family Planning & Sexual Health	
Family Planning	<ul style="list-style-type: none"> <li>• <a href="#">Faculty of Sexual and Reproductive Healthcare Education and Training</a></li> </ul>
Reproductive	<ul style="list-style-type: none"> <li>• <a href="#">Tommys</a></li> </ul>
Sexual Health / Sexual Abuse	<ul style="list-style-type: none"> <li>• <a href="#">Sexual and Reproductive Health Profiles</a></li> <li>• <a href="#">FSRH Education &amp; Training</a></li> <li>• <a href="#">UKHSA HPV vaccination guidance   PHE/DH/DWP guideline   Guidelines</a></li> </ul>
Maternity / Neonate health	<ul style="list-style-type: none"> <li>• <a href="#">JAMA Self-monitoring of BP in Pregnancy (createsend1.com)</a></li> <li>• <a href="#">NHS England » Babies to get new test for eye cancer in the womb to save their sight</a></li> </ul>

Care of Patients with Long Term Conditions	
LTC	<ul style="list-style-type: none"> <li>• <a href="#">Physical Activity for the Prevention and Management of Long-Term Conditions</a></li> </ul>
Diabetes & Pre-Diabetes	<ul style="list-style-type: none"> <li>• <a href="#">AZ Medical and Educational Goods and Services in Diabetes</a></li> <li>• <a href="#">Mumoactive</a></li> <li>• <a href="#">The mySugr App</a></li> <li>• <a href="#">Foot Check</a></li> <li>• <a href="#">Content (medall.org)</a></li> <li>• <a href="#">Association of Protein Intake With Physical Function Outcomes in T2D Patients (medscape.com)</a></li> <li>• <a href="#">Factors Influencing COVID-19-Related Mortality Risk in T2DM Patients (medscape.com)</a></li> </ul>
Respiratory	<ul style="list-style-type: none"> <li>• <a href="#">Spirometry: step by step</a></li> <li>• <a href="#">ARTP</a></li> <li>• <a href="#">British Lung Foundation</a></li> <li>• <a href="#">The Primary Care Respiratory Society</a></li> <li>• <a href="#">Respiratory Disease - elearning for healthcare (e-lfh.org.uk)</a></li> <li>• <a href="#">Infection prevention and control for seasonal respiratory infections in health and care settings (including SARS-CoV-2) for winter 2021–2022</a></li> <li>• <a href="#">BPD</a></li> <li>• <a href="#">amiodarone lung</a></li> <li>• <a href="#">transient tachypnoea of the newborn</a></li> </ul>
COPD	<ul style="list-style-type: none"> <li>• <a href="#">Right Breathe</a></li> <li>• <a href="#">Effects of ICS Discontinuation in COPD Patients on Triple Therapy (medscape.com)</a></li> <li>• <a href="#">Does COPD-OSA Overlap Syndrome Increase the Risk of CVD? (medscape.com)</a></li> </ul>
Asthma	<ul style="list-style-type: none"> <li>• <a href="#">FeNO - Fractional exhaled nitric oxide - for the diagnosis and management of Asthma</a></li> <li>• <a href="#">Asthma UK</a></li> <li>• <a href="#">Asthma: diagnosis, monitoring and chronic asthma management</a></li> <li>• <a href="#">GINA 2021: the missing pieces in the childhood asthma puzzle</a></li> <li>• <a href="#">GINA: Interim Guidance About COVID-19 &amp; Asthma</a></li> <li>• <a href="#">Greener Practice Asthma Toolkit</a></li> <li>• <a href="#">BMJ Open Cost of Switching Asthma Inhalers</a></li> <li>• <a href="#">Improving Asthma Care and Thinking Green</a></li> </ul>

*Continuation of Long Term Conditions*

Hypertension	<ul style="list-style-type: none"> <li>• <a href="#">British Heart Foundation</a></li> <li>• <a href="#">Blood Pressure UK</a></li> <li>• <a href="#">Hypertension in adults: diagnosis and management</a></li> <li>• <a href="#">Hypertension in adults: diagnosis and treatment</a></li> <li>• <a href="#">May Measure Month</a></li> <li>• <a href="#">Reducing the disease burden for hypertension in North East London (uclpartners.com)</a></li> </ul>
CVD/AF	<ul style="list-style-type: none"> <li>• <a href="#">QRISK@3-2018 risk calculator</a></li> <li>• <a href="#">Heart Rhythm Alliance</a></li> <li>• <a href="#">CVD risk assessment and management</a></li> <li>• <a href="#">AHA Journals</a></li> <li>• <a href="#">Cardiovascular disease profiles: May 2022 update - GOV.UK (www.gov.uk)</a></li> <li>• <a href="#">BMJ Ezetimibe and PCSK9 inhibitors for Reducing CVD Risk: network meta-analysis (createsend1.com)</a></li> <li>• <a href="#">BMJ Lipid-lowering medication Rapid Recommendations (createsend1.com)</a></li> <li>• <a href="#">Hybrid Coronary Revascularisation vs CABG for Multi-Vessel CAD (medscape.com)</a></li> <li>• <a href="#">Low Birth Weight Linked to Increased Risk of Cardiovascular Events (medscape.com)</a></li> <li>• <a href="#">Clinical focus: cardiovascular disease   Information   Guidelines</a></li> <li>• <a href="#">NHS statin intolerance pathway   PHE/DH/DWP guideline   Guidelines</a></li> <li>• <a href="#">Cardiovascular Disease (CVD) Toolkit available for the health and social care workforce</a></li> </ul>
Heart Failure	<ul style="list-style-type: none"> <li>• <a href="#">British Heart Foundation</a></li> <li>• <a href="#">British Society Guidelines</a></li> <li>• <a href="#">Consider safety of calcium supplements in older people with aortic stenosis. say researchers   MIMS online</a></li> </ul>
Cancer / Oncology	<ul style="list-style-type: none"> <li>• <a href="#">Surviving Thyroid Cancer</a></li> <li>• <a href="#">Help Us Help You - Lung Cancer Symptoms</a></li> <li>• <a href="#">Becca Breast Cancer Support App</a></li> <li>• <a href="#">Breast Cancer Now</a></li> <li>• <a href="#">MoleCare App</a></li> <li>• <a href="#">Macmillian</a></li> <li>• <a href="#">Bowel Cancer UK</a></li> <li>• <a href="#">NHS England » A record year for people receiving lifesaving NHS cancer checks</a></li> <li>• <a href="#">Managing adult malnutrition in the community</a></li> </ul>
Chronic Kidney Disease	<ul style="list-style-type: none"> <li>• <a href="#">Kidney.Org</a></li> <li>• <a href="#">Kidney Quality Improvement Partnership</a></li> </ul>



*Continuation of Long Term Conditions*

Liver Disease	<ul style="list-style-type: none"> <li>• <a href="#">British Liver Trust</a></li> <li>• <a href="#">Liver Research</a></li> <li>• <a href="#">BRITISH ASSOCIATION FOR THE STUDY OF THE LIVER</a></li> <li>• <a href="#">LIVErNORTH</a></li> <li>• <a href="#">LIVER DISEASE AND CIRRHOSIS</a></li> </ul>
Blood Disorders	<ul style="list-style-type: none"> <li>• <a href="#">Blood Cancer</a></li> <li>• <a href="#">Thalassaemia</a></li> <li>• <a href="#">ITP</a></li> <li>• <a href="#">Haemophilia</a></li> <li>• <a href="#">UK MDS Forum</a></li> <li>• <a href="#">Save a life. Give plasma.</a></li> <li>• <a href="#">Diagnosis and management of pernicious anaemia</a></li> <li>• <a href="#">Haemochromatosis UK</a></li> </ul>
G.I	<ul style="list-style-type: none"> <li>• <a href="#">GIST Cancer UK</a></li> <li>• <a href="#">Overview   PredictSURE IBD and IBDX to guide treatment of Crohn's disease</a></li> </ul>
ENT	
G.U	
Neurological Conditions	<ul style="list-style-type: none"> <li>• <a href="#">The Brain Tumour Charity</a></li> <li>• <a href="#">Narcolepsy.Org</a></li> <li>• <a href="#">ACNR</a></li> <li>• <a href="#">Neurology - Medscape</a></li> </ul>
Musculoskeletal Conditions	<ul style="list-style-type: none"> <li>• <a href="#">Rheumatology</a></li> <li>• <a href="#">National Axial Spondyloarthritis Society</a></li> <li>• <a href="#">Musculoskeletal health</a></li> <li>• <a href="#">Musculoskeletal health: 5 year prevention strategic framework</a></li> <li>• <a href="#">Faculty of Occupational Medicine</a></li> <li>• <a href="#">Guide to embedding your first contact physiotherapy service</a></li> <li>• <a href="#">Musculoskeletal conditions profile: May 2022 update - GOV.UK (www.gov.uk)</a></li> <li>• <a href="#">Healthier lifestyle can help to ease osteoarthritis symptoms says NICE   News and features   News   NICE</a></li> <li>• <a href="#">NSAIDs analgesic of choice for osteoarthritis in draft NICE guidance   MIMS online</a></li> </ul>

*Continuation of Long Term Conditions*

<p>Endocrine Disorders / Metabolic Disorders</p>	<ul style="list-style-type: none"> <li>• <a href="#">Endocrinology</a></li> <li>• <a href="#">Turner Syndrome Support Society</a></li> <li>• <a href="#">Thyroid Eye Disease</a></li> <li>• <a href="#">British Thyroid Foundation</a></li> <li>• <a href="#">Thyroid UK</a></li> <li>• <a href="#">Pituitary</a></li> <li>• <a href="#">Addisons Disease</a></li> <li>• <a href="#">Parathyroid UK</a></li> <li>• <a href="#">The Royal Osteoporosis Society</a></li> <li>• <a href="#">Metabolic Support UK</a></li> </ul>
<p>Frailty</p>	<ul style="list-style-type: none"> <li>• <a href="#">Recognising frailty</a></li> <li>• <a href="#">Identifying frailty</a></li> <li>• <a href="#">CLINICAL FRAILTY SCALE</a></li> <li>• <a href="#">Browse by Tags: vision - edShare@GCU</a></li> <li>• <a href="#">Studio (instructuremedia.com)</a></li> <li>• <a href="#">Bedside vision check for falls prevention: assessment tool   RCP London</a></li> <li>• <a href="#">The importance of vision in preventing falls</a></li> </ul>
<p>Dementia</p>	<ul style="list-style-type: none"> <li>• <a href="#">Dementia UK</a></li> <li>• <a href="#">Understanding dementia</a></li> <li>• <a href="#">My House of Memories - NHS App</a></li> <li>• <a href="#">Dementia profile updates</a></li> <li>• <a href="#">Caring for Carers Dementia Support Group (Tuesdays)</a></li> <li>• <a href="#">Delirium Champions</a></li> <li>• <a href="#">Medscape Dementia</a></li> <li>• <a href="#">No Net Effect of Low-dose Aspirin on Dementia Risk in Patients with Diabetes (medscape.com)</a></li> </ul>
<p>Allergy / Auto-immune / Genetic Conditions</p>	<ul style="list-style-type: none"> <li>• <a href="#">Allergy UK</a></li> <li>• <a href="#">Rheumatology</a></li> <li>• <a href="#">Addisons Disease</a></li> <li>• <a href="#">Patients with Down Syndrome More Susceptible to COVID-19 Infection (medscape.com)</a></li> </ul>

*Continuation of Long Term Conditions*

Dermatology	<ul style="list-style-type: none"> <li>• <a href="#">British Association of Dermatologists</a></li> <li>• <a href="#">Eczema</a></li> <li>• <a href="#">The British Skin Foundation</a></li> <li>• <a href="#">Acne vulgaris: management</a></li> <li>• <a href="#">The Primary Care Dermatology Society</a></li> <li>• <a href="#">Acne.org</a></li> <li>• <a href="#">Allergy UK</a></li> <li>• <a href="#">Urticaria</a></li> <li>• <a href="#">Hives</a></li> <li>• <a href="#">Sunburn</a></li> <li>• <a href="#">Causes of cancer and reducing your risk</a></li> <li>• <a href="#">What is Rosacea?</a></li> <li>• <a href="#">Rosecea</a></li> <li>• <a href="#">Herpes.org</a></li> <li>• <a href="#">Shingles</a></li> <li>• <a href="#">Fungal Skin Infection - Foot</a></li> <li>• <a href="#">The Psoriasis Association</a></li> <li>• <a href="#">Psoriasis</a></li> <li>• <a href="#">Melanoma</a></li> <li>• <a href="#">Skin Health Information</a></li> <li>• <a href="#">British Association of Plastic Reconstructive and Aesthetic Surgeons</a></li> <li>• <a href="#">Warts and verrucae</a></li> <li>• <a href="#">Updates in dermatology from GPnotebook (contains promotional information) (mailchi.mp)</a></li> <li>• <a href="#">NEJM Baricitinib for Alopecia (createsend1.com)</a></li> </ul>
Obesity	<ul style="list-style-type: none"> <li>• <a href="#">Obesity UK</a></li> </ul>
Pain Management	<ul style="list-style-type: none"> <li>• <a href="#">Pain Concern</a></li> <li>• <a href="#">UK career framework for pain nurses</a></li> </ul>

<i>Continuation of Long Term Conditions</i>	
Genomics	
Multi-Morbidity	<ul style="list-style-type: none"> <li>• <a href="#">Multimorbidity</a></li> <li>• <a href="#">Multimorbidity / multiple long-term conditions (MLTC)</a></li> </ul>
Minor Illness / First Contact Assessment / OSCE	<ul style="list-style-type: none"> <li>• <a href="#">Fact Sheets - Self Care Forum</a></li> </ul>
Other / Case Studies	<ul style="list-style-type: none"> <li>• <a href="#">Ultra Rare Disease Disorders And Disabilities Foundation</a></li> <li>• <a href="#">MyCognition Home - NHS App</a></li> <li>• <a href="#">The Cold Weather Plan for England</a></li> </ul>
End of Life Care	
End of Life Care	<ul style="list-style-type: none"> <li>• <a href="#">ReSPECT for healthcare professionals</a></li> <li>• <a href="#">Hospice UK</a></li> <li>• <a href="#">Palliative and end of life care profiles: May 2022 data update - GOV.UK (www.gov.uk)</a></li> </ul>

Covid-19	
Covid-19	<ul style="list-style-type: none"> <li>• <a href="#">Covid Live</a></li> <li>• <a href="#">Coronavirus » Letter to general practices: deployment of COVID-19 treatments for highest risk non-hospitalised patients (england.nhs.uk)</a></li> <li>• <a href="#">Symptomatic and asymptomatic staff testing</a></li> <li>• <a href="#">COVID-19 FAQs (rcn.org.uk)</a></li> <li>• <a href="#">COVID-19 and vaccination (rcn.org.uk)</a></li> <li>• <a href="#">COVID-19 and mandatory vaccination (rcn.org.uk)</a></li> <li>• <a href="#">COVID-19 and staffing levels (rcn.org.uk)</a></li> <li>• <a href="#">COVID-19 and time off (rcn.org.uk)</a></li> <li>• <a href="#">Investigation of SARS-CoV-2 variants of concern: variant risk assessments (www.gov.uk)</a></li> <li>• <a href="#">Investigation of SARS-CoV-2 variants: technical briefings - GOV.UK (www.gov.uk)</a></li> <li>• <a href="#">COVID-19 variants: genomically confirmed case numbers (www.gov.uk)</a></li> <li>• <a href="#">Coronavirus (COVID-19) Infection Survey, UK: 6 May 2022 - GOV.UK (www.gov.uk)</a></li> <li>• <a href="#">Coronavirus (COVID-19) Infection Survey, Northern Ireland weekly report 6 May 2022 (www.gov.uk)</a></li> <li>• <a href="#">COVID-19: reported SARS-CoV-2 deaths in England (www.gov.uk)</a></li> <li>• <a href="#">NHS England » NHS rolls out life-saving arthritis drug to treat COVID</a></li> <li>• <a href="#">The Health Service and Social Care Workers (Scrutiny of Coronavirus-related Deaths) (Revocation) Directions 2022 - GOV.UK (www.gov.uk)</a></li> <li>• <a href="#">Effects of the coronavirus (COVID-19) pandemic on "high-contact" industries (www.gov.uk)</a></li> <li>• <a href="#">Attitudes towards COVID-19 among passengers travelling into the UK: March 2021 to March 2022 (www.gov.uk)</a></li> </ul>
Long Covid	<ul style="list-style-type: none"> <li>• <a href="#">Supporting your recovery after COVID-19</a></li> <li>• <a href="#">Long Covid Toolkit</a></li> <li>• <a href="#">Long term effects of COVID (Long COVID)</a></li> <li>• <a href="#">Post-COVID Syndrome (Long COVID)</a></li> <li>• <a href="#">COVID-19 Yorkshire Rehabilitation Screening Tool</a></li> <li>• <a href="#">FOM Guidance</a></li> <li>• <a href="#">Lung health care after COVID-19</a></li> <li>• <a href="#">Long COVID (rcn.org.uk)</a></li> <li>• <a href="#">Self-reported long COVID after infection with the Omicron variant (www.gov.uk)</a></li> <li>• <a href="#">Long COVID   Advice Guides   Royal College of Nursing (rcn.org.uk)</a></li> <li>• <a href="#">NHS rolls out second arthritis drug to treat COVID-19   MIMS online</a></li> </ul>
Covid Response / Recovery	<ul style="list-style-type: none"> <li>• <a href="#">NHS England » Enabling the workforce for elective recovery</a></li> </ul>

News & Views

Digital News / Remote Consultations	<ul style="list-style-type: none"> <li>• <a href="#">Digital Health News Webinars</a></li> <li>• <a href="#">Digital Health News</a></li> <li>• <a href="#">NHS Digital</a></li> <li>• <a href="#">Public Sector Events, Conferences and Training - Inside Government</a></li> <li>• <a href="#">There are only 27 days to go! (digitalhealthcareshow.com)</a></li> <li>• <a href="#">Digital Health Digest - 6 May 2022 (mailchi.mp)</a></li> <li>• <a href="#">Digital Health Networks Newsletter: 9 May 2022 (mailchi.mp)</a></li> </ul>
PSNC News / Pharmacy	<ul style="list-style-type: none"> <li>• <a href="#">National Pharmacy Association</a></li> <li>• <a href="#">Royal Pharmaceutical Society</a></li> <li>• <a href="#">Medicines Learning Portal</a></li> <li>• <a href="#">Specialist Pharmacy Service</a></li> <li>• <a href="#">Pharmacy Review Steering Group Update: Three weeks until voting begins (mailchi.mp)</a></li> <li>• <a href="#">PSNC Newsletter: 6th May (mailchi.mp)</a></li> <li>• <a href="#">PSNC Newsletter: 4th May (mailchi.mp)</a></li> </ul>
Pulse / GP Online / HSJ / NB Medical	<ul style="list-style-type: none"> <li>• <a href="#">GP Online</a></li> <li>• <a href="#">HSJ</a></li> <li>• <a href="#">Pulse Today</a></li> </ul>
Primary Care Update / PCC / PPP	<ul style="list-style-type: none"> <li>• <a href="#">Public Policy Projects News</a></li> <li>• <a href="#">Primary Care Improvement Community Newsletter</a></li> </ul>
Health Care Leaders Newsletters	
Kings Fund	<ul style="list-style-type: none"> <li>• <a href="#">The Kings Fund</a></li> <li>• <a href="#">Ideas that change health and care</a></li> <li>• <a href="#">Events update   May 2022 (kingsfundmail.org.uk)</a></li> <li>• <a href="#">Don't forget to book your place (kingsfundmail.org.uk)</a></li> <li>• <a href="#">Today's daily essentials (medscape.com)</a></li> <li>• <a href="#">Getting ready for patients to have access to their future data   NHS England and NHS Improvement Events</a></li> </ul>
World Health Organisation	<ul style="list-style-type: none"> <li>• <a href="#">WHO</a></li> <li>• <a href="#">OpenWHO</a></li> </ul>

*Continuation News & Views*

<p>IHCT / CCG / STP / Healthier Futures</p>	<ul style="list-style-type: none"> <li>• <a href="#">Healthier Futures</a></li> <li>• <a href="#">Black Country &amp; West Birmingham CCG</a></li> <li>• <a href="#">Dudley Integrated Health and Care</a></li> <li>• <a href="#">Home :: Black Country Healthcare NHS Foundation Trust</a></li> </ul>
<p>NHSI / NHSE</p>	
<p>University / Student Nurses</p>	
<p>Medisa / Univadis / Geeky Medics / GP Notebook / Medscape</p>	<ul style="list-style-type: none"> <li>• <a href="#">Univadis Newsletter</a></li> <li>• <a href="#">Univadis Nurses Headlines</a></li> <li>• <a href="#">Medisa</a></li> <li>• <a href="#">Geeky Medics</a></li> <li>• <a href="#">Medscape Nurses</a></li> <li>• <a href="#">GP Notebook</a></li> <li>• <a href="#">Today's daily essentials (medscape.com)</a></li> <li>• <a href="#">Medscape Exclusive News</a></li> <li>• <a href="#">GPnotebook quick update (contains promotional information on Nutramigen LGG®: 57% fewer infants developed allergic manifestations vs whey-based EHF) (campaign-archive.com)</a></li> </ul>
<p>The Health Foundation</p>	<ul style="list-style-type: none"> <li>• <a href="#">The Health Foundation</a></li> <li>• <a href="#">Health and Care for older adults during the pandemic across 11 countries (healthfdn.org.uk)</a></li> <li>• <a href="#">Newsletter: What the public think about health and care, and why it's important (healthfdn.org.uk)</a></li> </ul>
<p>The Health Care Leaders Update</p>	<ul style="list-style-type: none"> <li>• <a href="#">Health Care Leader News</a></li> </ul>
<p>Practice Index</p>	
<p>Innovation Agency</p>	<ul style="list-style-type: none"> <li>• <a href="#">Innovation Agency Exchange</a></li> </ul>

*Continuation News & Views*

RCN	<ul style="list-style-type: none"> <li>• <a href="#">RCN</a></li> <li>• <a href="#">How to reduce glove use   RCN Magazines   Royal College of Nursing</a></li> <li>• <a href="#">Overseas nurses' skills being squandered by tough English language tests (rcni.com)</a></li> <li>• <a href="#">Safe staffing solutions in action   RCN Magazines   Royal College of Nursing</a></li> <li>• <a href="#">Join us for Nurses' Day 2022   News   Royal College of Nursing (rcn.org.uk)</a></li> <li>• <a href="#">Pat Cullen elected to European Federation of Nurses Executive Committee   Royal College of Nursing (rcn.org.uk)</a></li> <li>• <a href="#">'COVID-19 has shown how important language is for effective infection prevention and control'   News   Royal College of Nursing (rcn.org.uk)</a></li> <li>• <a href="#">Flexible working: a guide for RCN reps   Royal College of Nursing</a></li> <li>• <a href="#">Winning the long game   RCN Magazines   Royal College of Nursing</a></li> <li>• <a href="#">Meet Mel Kerr Vice Chair of RCN Council   RCN Magazines   Royal College of Nursing</a></li> <li>• <a href="#">'Every rep had their views listened to'   RCN Magazines   Royal College of Nursing</a></li> <li>• <a href="#">A seat at the table: how RCN forums can influence health policy   RCN Magazines   Royal College of Nursing</a></li> <li>• <a href="#">Emergency department pressures: System-wide solutions needed</a></li> <li>• <a href="#">'COVID has shown how important language is in effective infection control'</a></li> <li>• <a href="#">Join us for Nurses' Day 2022</a></li> <li>• <a href="#">NI hike and rising inflation leaves experienced nurses over £900 worse off</a></li> <li>• <a href="#">RCN re-joins International Council of Nurses</a></li> <li>• <a href="#">Golden handshakes of up to £5,000 offered to nurses for joining care homes (rcni.com)</a></li> </ul>
Nursing in Practice / Nursing Standard / Independent Nurse	<ul style="list-style-type: none"> <li>• <a href="#">Nursing Times</a></li> <li>• <a href="#">Independent Nurse Magazine</a></li> <li>• <a href="#">Practice Nursing</a></li> <li>• <a href="#">Practice Nursing Bulletin</a></li> <li>• <a href="#">Practice Nursing Clinical Bulletin</a></li> <li>• <a href="#">GPN Bulletin</a></li> <li>• <a href="#">Building resilience in contemporary nursing practice (mah-communications.co.uk)</a></li> </ul>
QNI	<ul style="list-style-type: none"> <li>• <a href="#">QNI</a></li> <li>• <a href="#">Don't miss out on these opportunities! (mailchi.mp)</a></li> <li>• <a href="#">Long Covid Nurse Expert Group – The Queen's Nursing Institute (qni.org.uk)</a></li> <li>• <a href="#">Homeless and Inclusion Health meeting – The Queen's Nursing Institute (qni.org.uk)</a></li> <li>• <a href="#">CNEN © – The Queen's Nursing Institute (qni.org.uk)</a></li> <li>• <a href="#">Infection Prevention and Control Champions Meeting – The Queen's Nursing Institute (qni.org.uk)</a></li> </ul>
NMC	<ul style="list-style-type: none"> <li>• <a href="#">NMC</a></li> </ul>



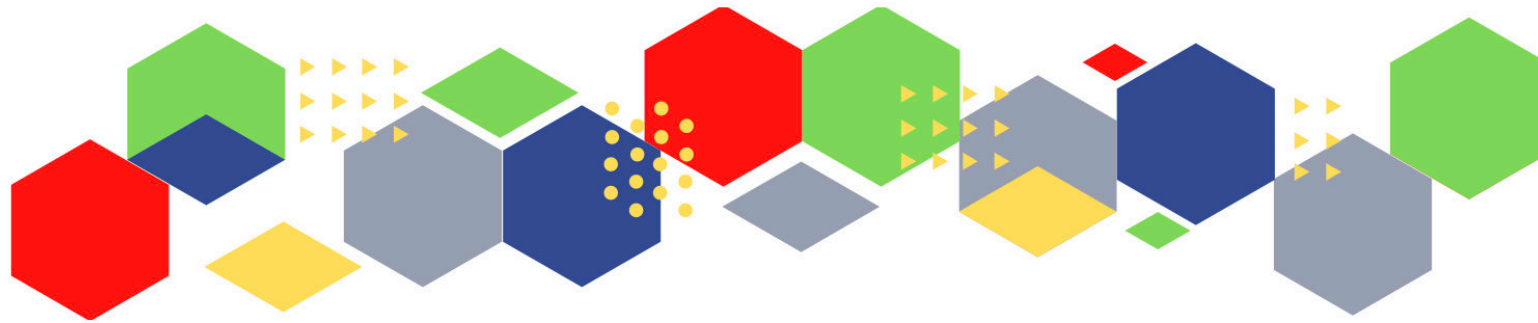
CMO / CNO	
WHO	<ul style="list-style-type: none"> <li>• <a href="#">WHO</a></li> </ul>
Nice	<ul style="list-style-type: none"> <li>• <a href="#">NICE</a></li> </ul>
RCGP / BMA / The Lancet	<ul style="list-style-type: none"> <li>• <a href="#">The Lancet</a></li> <li>• <a href="#">British Medical Journal</a></li> <li>• <a href="#">Royal College of General Practitioners</a></li> </ul>
Midlands Academic Health Science Network	<ul style="list-style-type: none"> <li>• <a href="#">WMAHSN Network</a></li> <li>• <a href="#">WMAHSN May Update</a></li> </ul>
Healthwatch	<ul style="list-style-type: none"> <li>• <a href="#">Healthwatch</a></li> </ul>
Other	
<b>Free Training / Webinars / Meetings / CPD</b>	
Development / Information and Knowledge	<ul style="list-style-type: none"> <li>• <a href="#">FutureProof Health Training &amp; Events</a></li> <li>• <a href="#">Red Whale Training</a></li> <li>• <a href="#">LATEST WEBINARS FROM ISSUES &amp; ANSWERS</a></li> <li>• <a href="#">Nursing Events</a></li> <li>• <a href="#">There are only 27 days to go! (digitalhealthcareshow.com)</a></li> <li>• <a href="#">Webinar - Sharing our early findings: Evaluation of UCLPartners Proactive Care Frameworks, Tues 10 May 12-1pm (mailchi.mp)</a></li> <li>• <a href="#">Improving Asthma Care and Thinking Green (createsend1.com)</a></li> <li>• <a href="#">Novo Nordisk: Primary care management of type 2 diabetes: The place of GLP-1 RAs in therapy hybrid evening symposium 11 May 2022 (Promotional content) (mailchi.mp)</a></li> <li>• <a href="#">Integrated care in practice   Secure your place (kingsfundmail.org.uk)</a></li> <li>• <a href="#">Safe, reliable processes (Reliable Design) I &amp; II (office.com)</a></li> <li>• <a href="#">7th June - Long Term Condition- Patient Recall (office.com)</a></li> <li>• <a href="#">29th June - A Safer Home Visiting Blood Test Process (Reliable Design) (office.com)</a></li> <li>• <a href="#">Fundamentals of change and improvement application 2022/23 (office.com)</a></li> <li>• <a href="#">Welcome (nhsconfedexpo.org)</a></li> <li>• <b>April – May.</b> <a href="#">Core20PLUS5 - reducing healthcare inequalities series</a> covering the five clinical priority areas outlined within the Core20PLUS5 approach.</li> <li>• <b>April – June.</b> <a href="#">Community Pharmacist Consultation Service training for practices</a></li> <li>• <b>April – June.</b> <a href="#">Demand and Capacity series</a> designed to help gain a deeper and practical understanding of what demand and capacity are and the consequent issues that occur.</li> <li>• <b>April – July.</b> <a href="#">Public Participation online learning sessions</a> about working with people and communities.</li> <li>• <b>28 April, 7pm – 8pm.</b> <a href="#">Pharmacy team experience with CPCS</a></li> <li>• <b>5 May, 5pm - 6pm.</b> <a href="#">General practice webinar</a></li> <li>• <b>6 May, 1pm.</b> <a href="#">UKCPA Respiratory webinar: Reducing gaps in asthma care – asthma, the environment &amp; the impact and investment fund (IIF) – what it means in practice</a></li> <li>• <b>6 May, 3pm – 4.30pm.</b> <a href="#">Severe mental illness webinar: Core20PLUS5 - reducing healthcare inequalities</a></li> <li>• <b>10 May, 12pm - 1pm.</b> <a href="#">Evaluating the pilot implementation of Proactive Care Framework</a></li> </ul>

*Continuation of Free Training / Webinars / Meetings / CPD*

YouTube	<ul style="list-style-type: none"> <li>• <a href="#">NHS England</a></li> </ul>
Blogs/Vlogs	
Area Bulletins	
BCWB Training Hub	<ul style="list-style-type: none"> <li>• <a href="#">Latest news from the Black Country and West Birmingham Training Hub (campaign-archive.com)</a></li> </ul>
Evidence based care	
Eventbrite	<ul style="list-style-type: none"> <li>• <a href="#">Future Proof Health Eventbrite Page</a></li> <li>• <a href="#">Acute Behavioural Crisis in CAMHS Registration, Multiple Dates   Eventbrite</a></li> <li>• <a href="#">Palliative &amp; end of life care for people experiencing homelessness (2-day) Tickets, Thu 5 May 2022 at 09:00   Eventbrite</a></li> <li>• <a href="#">Diabetes Education Update: 9 Care Processes and 3 Treatment Targets</a></li> <li>• <a href="#">Spreading VGCs at scale: Learnings from 2021 – 25<sup>th</sup> May, 12:30-13:45 - <a href="https://www.eventbrite.co.uk/e/250120606467">https://www.eventbrite.co.uk/e/250120606467</a></a></li> <li>• <a href="#">Emerging models in diabetes – 14<sup>th</sup> June, 12:30-13:30 - <a href="https://www.eventbrite.co.uk/e/250128078817">https://www.eventbrite.co.uk/e/250128078817</a></a></li> <li>• <a href="#">Supporting families and children through VGCs – 13<sup>th</sup> July, 12:30-13:30 - <a href="https://www.eventbrite.co.uk/e/250133545167">https://www.eventbrite.co.uk/e/250133545167</a></a></li> <li>• <a href="#">Wound care - ConvaTec Events   Eventbrite</a></li> <li>• <a href="#">Algorithm to diagnosis and management of adult knee problems</a></li> </ul>
e-Learning for Health	<ul style="list-style-type: none"> <li>• <a href="#">New elearning session highlights dermatological side effects of COVID-19</a></li> <li>• <a href="#">New COVID-19 community contact tracing programme now available</a></li> <li>• <a href="#">Staff Recovery Resources for critical care and the wider health workforce recovering from the COVID-19 pandemic</a></li> <li>• <a href="#">MindEd infographic highlights programme's success during COVID-19</a></li> <li>• <a href="#">Long COVID elearning session available</a></li> <li>• <a href="#">The Changing Story of Cancer programme</a></li> <li>• <a href="#">Updates to the Flu Immunisation elearning programme for the 2021/22 flu season</a></li> <li>• <a href="#">Flu Immunisation programme - elearning</a></li> <li>• <a href="#">Foundation elearning programme update September 2021</a></li> <li>• <a href="#">Virtual wards enabled by technology - elearning for healthcare (e-lfh.org.uk)</a></li> </ul>

*Continuation of Free Training / Webinars / Meetings / CPD*

Free to RCN	
Podcasts	<ul style="list-style-type: none"> <li>• <a href="#">The Nursing Handover Podcast</a></li> <li>• <a href="#">Nursing Standard Podcasts</a></li> <li>• <a href="#">What Makes a Nurse?</a></li> <li>• <a href="#">The MedicsPro Podcast</a></li> <li>• <a href="#">Nursing Matters</a></li> <li>• <a href="#">Welcome to the BJN Podcast</a></li> <li>• <a href="#">Why we care</a></li> <li>• <a href="#">EBN podcast</a></li> <li>• <a href="#">This Is Nursing</a></li> <li>• <a href="#">Maroon Mindset</a></li> <li>• <a href="#">Teach me, I'm a Nurse</a></li> <li>• <a href="#">Past Caring</a></li> <li>• <a href="#">RCGP eLearning podcast</a></li> <li>• <a href="#">The BMJ Podcast</a></li> <li>• <a href="#">Primary Care Network podcasts</a></li> <li>• <a href="#">The Professional Support Unit's Pandemic Podcast</a></li> <li>• <a href="#">How can public health nurses help deliver the Healthy Child Programme this winter?</a></li> <li>• <a href="#">Talking GP</a></li> <li>• <a href="#">Podcast – Matthew Winn – ICS Incoming.... Primary Care and Community Trusts</a></li> <li>• <a href="#">NB Hot Topics Podcast</a></li> <li>• <a href="#">Podcast: Will the rising cost of living be paid for by our health? (healthfdn.org.uk)</a></li> <li>• <a href="#">Lovegrove on Health - Podcast episode #4 - Skills for Health</a></li> <li>• <a href="#">Latest podcast episodes from GPnotebook (mailchi.mp)</a></li> </ul>
Research	<ul style="list-style-type: none"> <li>• <a href="#">Science Daily</a></li> <li>• <a href="#">Multimorbidity / multiple long-term conditions (MLTC)</a></li> <li>• <a href="#">Funding bodies launch consultation on future research assessment</a></li> </ul>
Freebies	<ul style="list-style-type: none"> <li>• <a href="#">Blue Light Card</a></li> </ul>
Other	



Thank you for reading Future Proof Health's weekly news!

If you missed past issues, please click [here](#) to view them

More information can be found on our website, [here](#)

Don't forget to like us on [Facebook](#) & Follow us on [Twitter](#)

